

T7S, R96W, 6th P.M.

WPX Energy Rocky Mountain, LLC

Well location, FEDERAL SG 333-28, located as shown in the NE 1/4 SE 1/4 of Section 28, T7S, R96W, 6th P.M., Garfield County, Colorado.

### BASIS OF ELEVATION

SPOT ELEVATION AT THE NORTHWEST CORNER OF SECTION 30, T5S, R95W, 6th P.M. TAKEN FROM THE FORKED GULCH QUADRANGLE, COLORADO, GARFIELD COUNTY, 7.5 MINUTE SERIES (TOPOGRAPHICAL MAP) PUBLISHED BY THE UNITED STATES DEPARTMENT OF THE INTERIOR, GEOLOGICAL SURVEY. SAID ELEVATION IS MARKED AS BEING 5966 FEET.

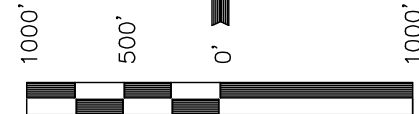
### BASIS OF BEARINGS

BASIS OF BEARINGS IS A G.P.S. OBSERVATION.

LINE TABLE		
LINE	DIRECTION	LENGTH
L1	N01°06'05"E	46.30'
L2	N89°52'40"W	509.15'
L3	N88°40'54"W	572.72'
L4	N00°12'56"W	223.00'



PLAT #1



SCALE

### CERTIFICATE

THIS IS TO CERTIFY THAT THE ABOVE PLAT WAS PREPARED AND LOCATION AS SHOWN WAS STAKED ON THE GROUND FROM FIELD NOTES OF ACTUAL SURVEYS MADE BY ME OR UNDER MY SUPERVISION AND THAT THE SAME ARE TRUE AND CORRECT TO THE BEST OF MY KNOWLEDGE AND BELIEF.

REGISTERED LAND SURVEYOR  
REGISTRATION NO. 17492  
STATE OF COLORADO  
08-05-14

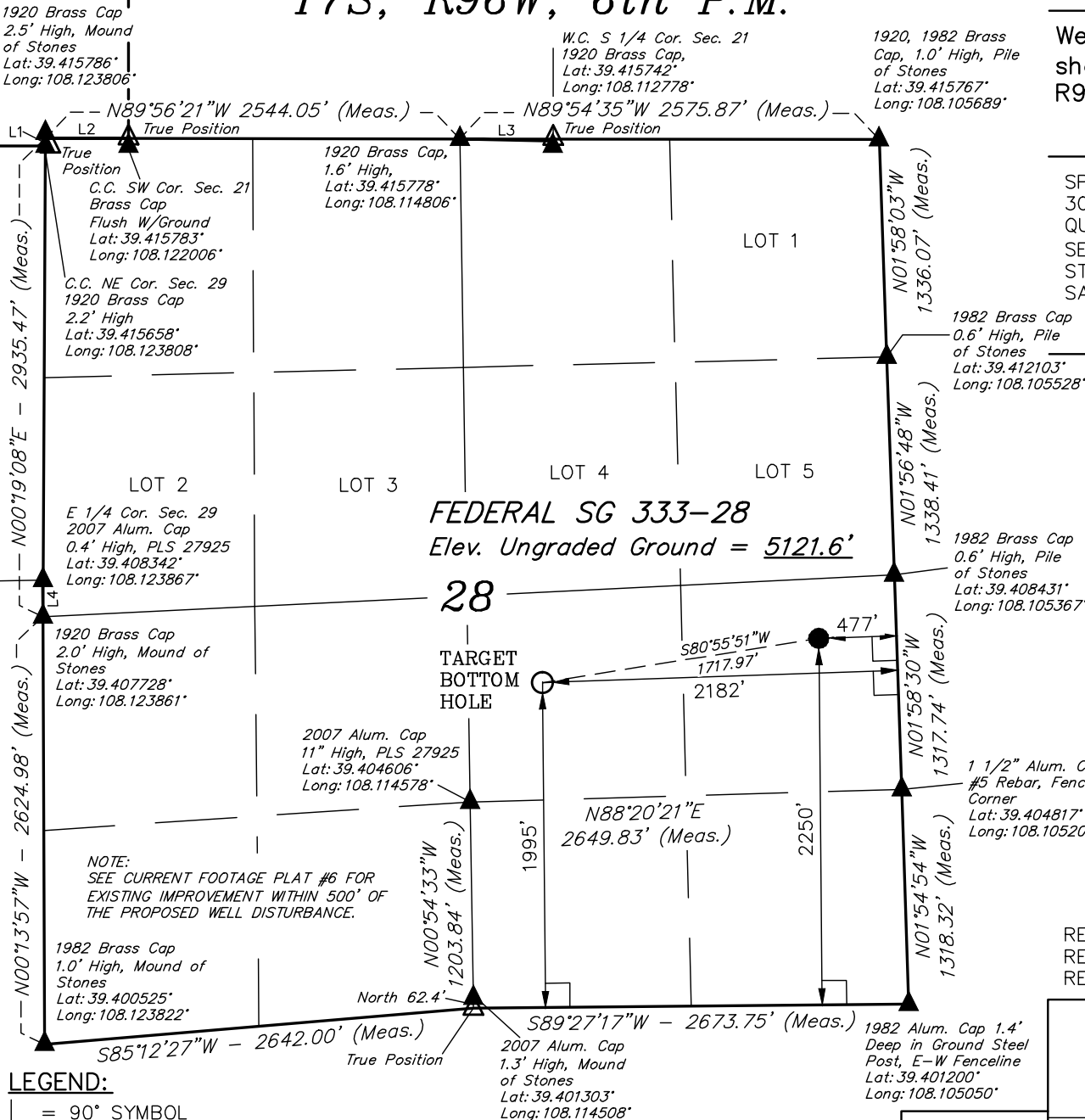
REVISED: 05-05-14 M.D.  
REVISED: 03-19-13 M.D.  
REVISED: 12-24-12 M.D.

UINTAH ENGINEERING & LAND SURVEYING

85 SOUTH 200 EAST - VERNAL, UTAH 84078

(435) 789-1017

SCALE 1" = 1000'	DATE SURVEYED: 02-28-11	DATE DRAWN: 11-26-12
PARTY B.J. R.P. M.D.	REFERENCES G.L.O. PLAT	
WEATHER COLD	FILE WPX Energy Rocky Mountain, LLC	



### LEGEND:

- = 90° SYMBOL
- = PROPOSED WELL HEAD.
- ▲ = SECTION CORNERS LOCATED.
- △ = SECTION CORNERS RE-ESTABLISHED. (Not Set on Ground.)

PDOP = 1.9

NAD 83 (TARGET BOTTOM HOLE)	NAD 83 (SURFACE LOCATION)
LATITUDE = 39°24'23.83" (39.406619)	LATITUDE = 39°24'26.50" (39.407361)
LONGITUDE = 108°06'46.84" (108.113011)	LONGITUDE = 108°06'25.23" (108.107008)
STATE PLANE--(COLO. CENTRAL--NAD83)	STATE PLANE--(COLO. CENTRAL--NAD83)
N = 1583608.44	N = 1583830.35
E = 2261772.80	E = 2263475.81