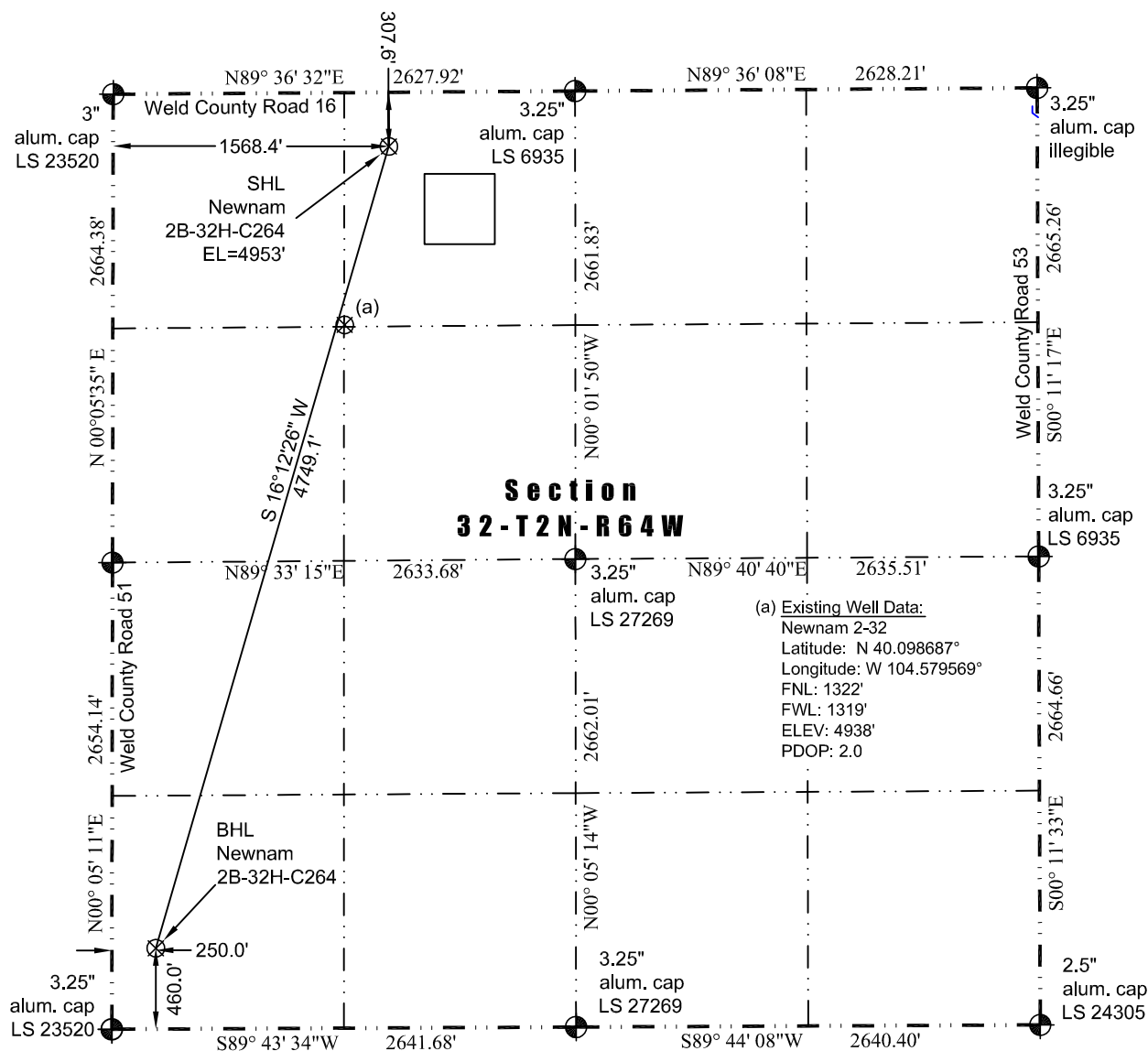


8114 Northstar Drive  
Windsor, Colorado 80528  
P. 970-576-4641

THIS MAP DOES NOT REPRESENT A BOUNDARY SURVEY



In accordance with a request from Jay Knutson of EnCana Oil & Gas (USA) Inc., JR Land Surveying, LLC has determined the location of the **Newnam 2B-32H-C264** well site to be SHL: 307.6' FNL and 1568.4 FWL, (BHL: 460.0' FSL and 250.0' FWL), as measured at ninety (90) degrees from the section lines of Section 32, Township 2 North, Range 64 West of the 6th Principal Meridian, Weld County Colorado.

Latitude: N 40.101468° (BHL: 40.088987°)  
Longitude: W 104.578633° (BHL: 104.583540°)  
PDOP: 1.7

Building: 849' northeast  
Building Unit: 1056' northeast  
Public Road: 299' north  
Property Line: 308' north  
Existing Well: Newnam 2-32: 1046' southwest

Above Ground Utility: 335' north  
Railroad: 2,279' northwest  
Well Window: SHL is 256' outside  
High Occupancy Building Unit: +5.280'

- 1) Bearings and distances based on NAD 83 Colorado North State Plane Coordinate, using RTK GPS observations taken 3/14/14 by operator Chris Bettencourt
- 2) Conversion factor to ground (1.0002793972).
- 3) Elevations based on NAVD 88 GPS heights and Geoid 2003 corrections.
- 4) See Location Drawing for visible improvements within 500 feet of Pad Site.
- 5) The surface use is a cultivated field.

**NOTICE:** According to Colorado law you must commence any legal action based upon any defect in this W.L.C. within three years after you first discover such defect. In no event may any action based upon any defect in this W.L.C. be commenced more than ten years from this said date of the certification shown hereon.

I hereby certify that this Well Location Certificate was prepared by me or under my direct supervision on 03/20/2014 for and on behalf of EnCana Oil & Gas (USA) Inc. That it is not a Land Survey Plat or an Improvement Survey Plat and that it is not to be relied upon for establishment of fences, buildings, or other future improvement lines.

John Robert McGehee LS#38219  
Well: Newnam 2B-32H-C264 WLC