

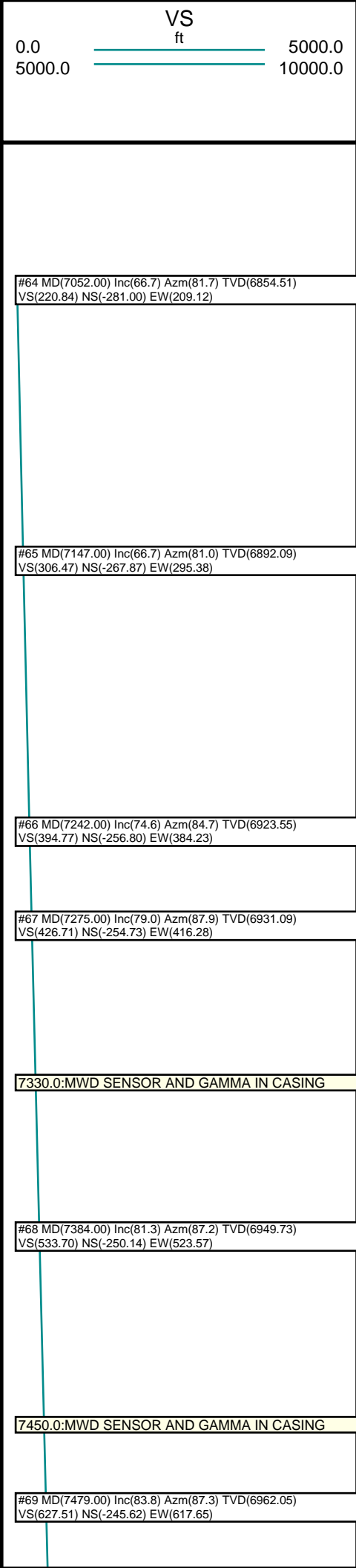
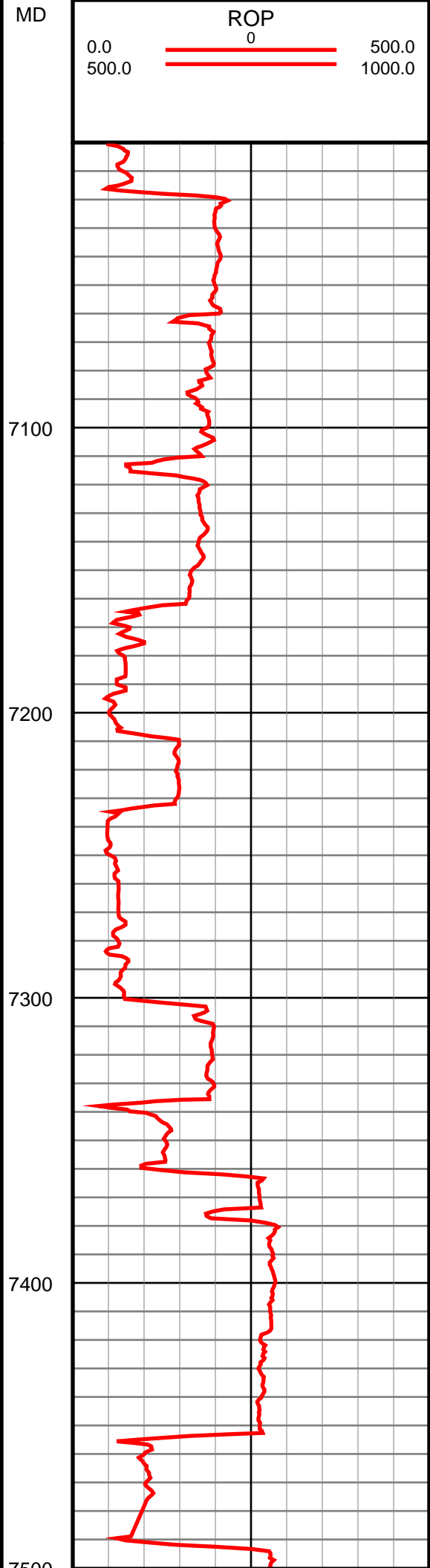
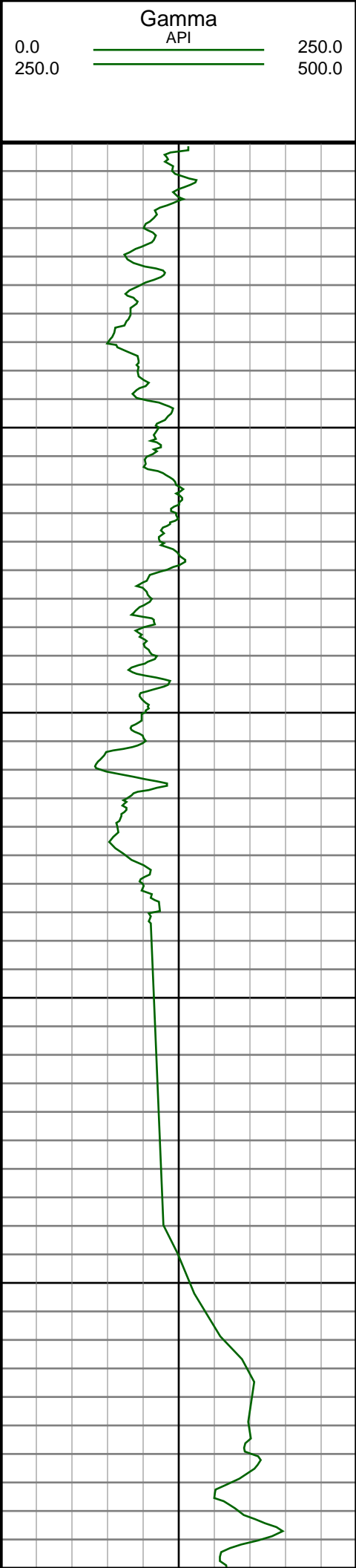
NO WORRIES PC G14-63-1HN MD 2":100'

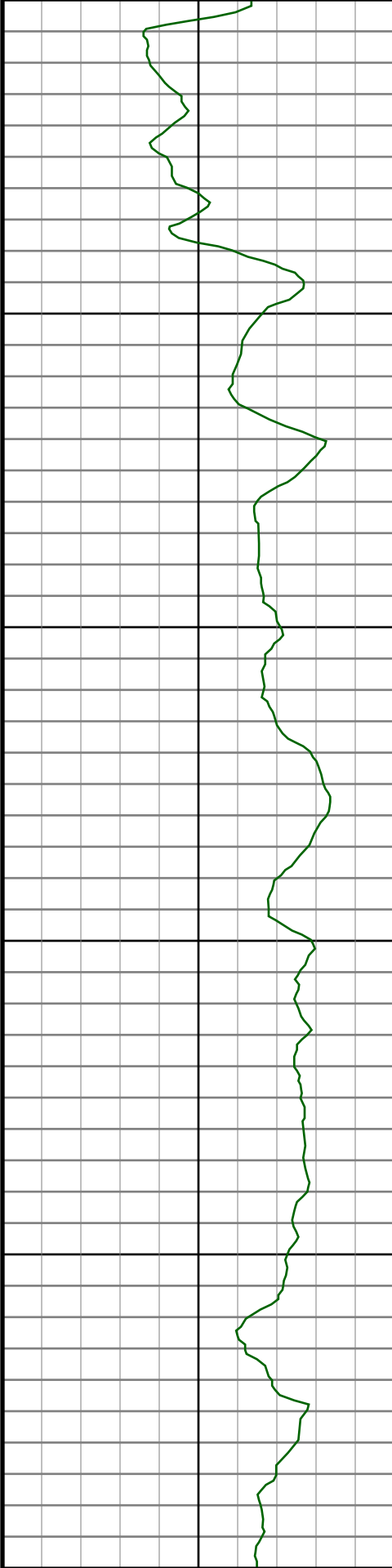
Company: Noble Energy Inc
Well Name: NO WORRIES PC G14-63-1HN
UWI or LSD: 05-123-36328
Rig Id: H&P 273
State: Colorado
County/Parish: Weld
Country: USA
Survey Company: Ensign Directional
Job number: 139436
Dir. Driller Days Kody Wood
Dir. Driller Nights Bret Johnson
MWD/LWD Days Tyler Teague
MWD/LWD Nights Jamey House

Log measurements:	Depth	Date
Depth measured from:	Start: 635 ft	01/13/2014
Maximum temperature: 240.8	End: 11310 ft	01/19/2014

Casing	Depth	Size	Mud Type:	Elevations
Surface: 626		9.625	Density:	KB: 4719
Intermediate: 7330	7		Viscosity:	GL: 4695
			Rm:	DF: 4719
			Rmf:	
			Rmc:	

Run	Bit Size	Offsets	Gamma	Survey	Start	Depths	End	Start	Dates	End
1	8.75	-1.00	-1.00		0	635		01/13/2014		01/13/2014
2	8.75	61.68	56.68		635	6200		01/14/2014		01/15/2014
3	8.75	61.84	56.84		6200	7336		01/15/2014		01/16/2014
4	6.125	71.75	66.75		7336	11183		01/17/2014		01/18/2014
5	6.125	71.12	66.12		11183	11310		01/18/2014		01/19/2014
6										
7										
8										
9										
10										





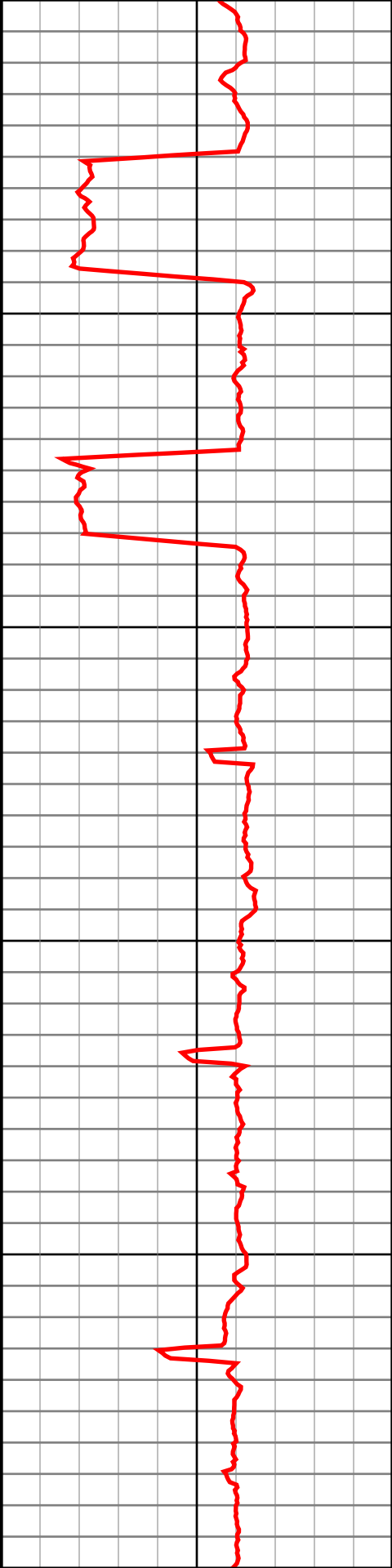
7600

7700

7800

7900

8000



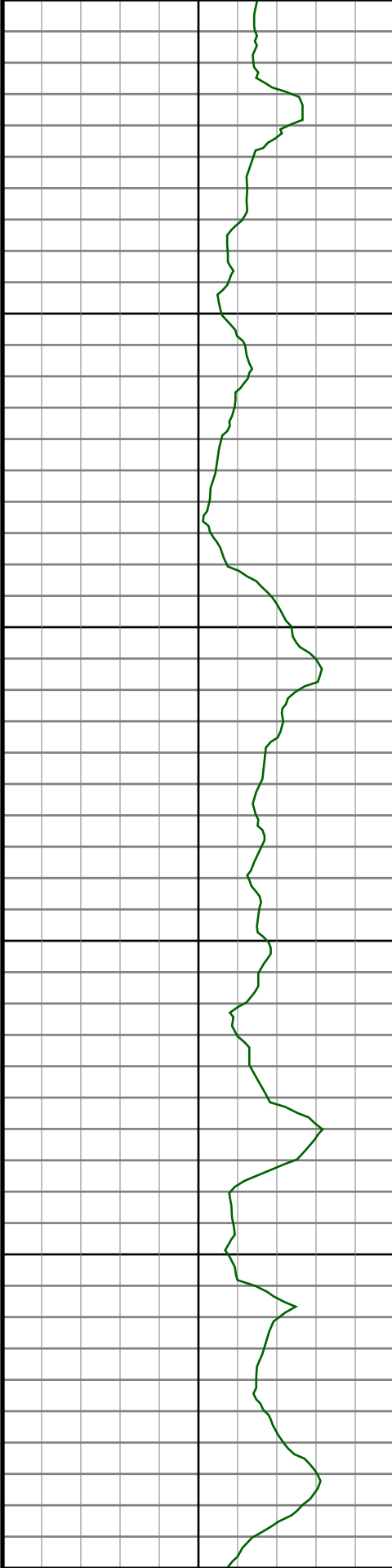
#70 MD(7574.00) Inc(87.5) Azm(87.5) TVD(6969.25)
VS(721.85) NS(-241.33) EW(712.26)

#71 MD(7669.00) Inc(91.1) Azm(88.0) TVD(6970.41)
VS(816.51) NS(-237.60) EW(807.17)

#72 MD(7763.00) Inc(91.0) Azm(88.4) TVD(6968.69)
VS(910.24) NS(-234.64) EW(901.10)

#73 MD(7858.00) Inc(90.9) Azm(88.7) TVD(6967.12)
VS(1005.01) NS(-232.24) EW(996.06)

#74 MD(7953.00) Inc(90.9) Azm(88.7) TVD(6965.62)
VS(1099.80) NS(-230.09) EW(1091.02)



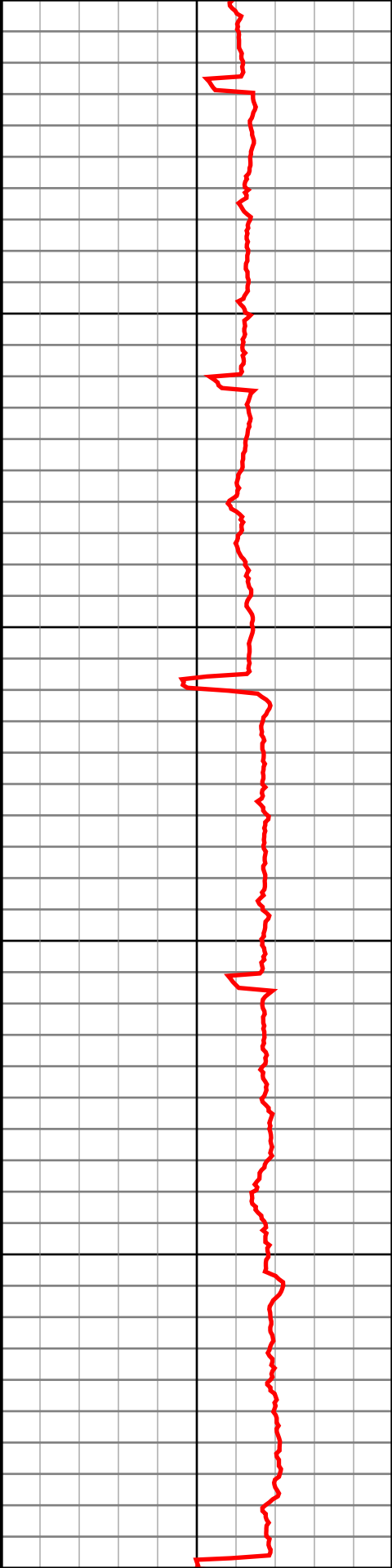
8100

8200

8300

8400

8500



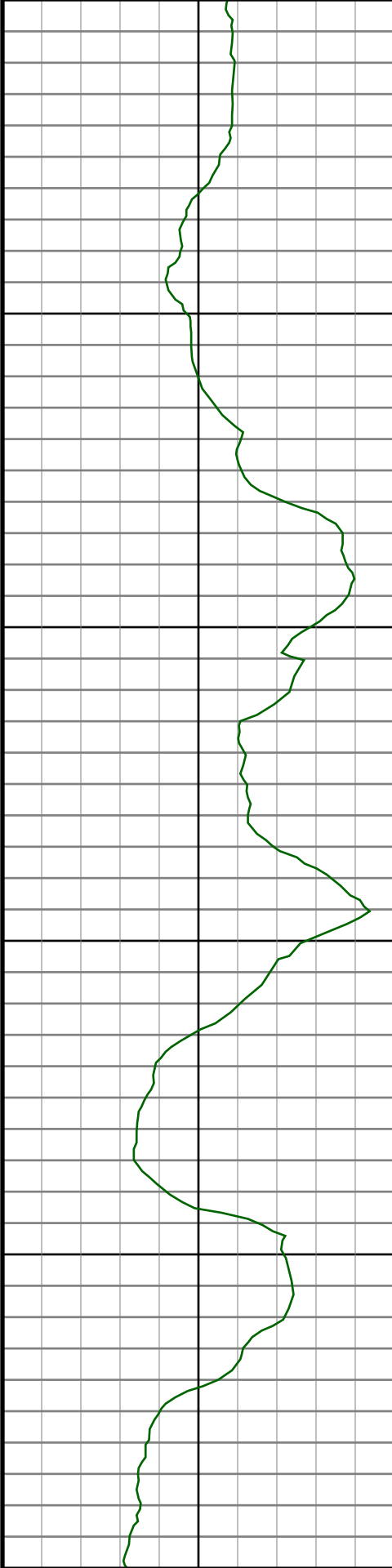
#75 MD(8048.00) Inc(90.8) Azm(88.7) TVD(6964.21)
VS(1194.59) NS(-227.93) EW(1185.99)

#76 MD(8143.00) Inc(90.7) Azm(88.6) TVD(6962.97)
VS(1289.37) NS(-225.69) EW(1280.96)

#77 MD(8237.00) Inc(90.7) Azm(88.9) TVD(6961.82)
VS(1383.17) NS(-223.64) EW(1374.93)

#78 MD(8332.00) Inc(90.7) Azm(89.1) TVD(6960.66)
VS(1477.99) NS(-221.98) EW(1469.90)

#79 MD(8427.00) Inc(90.6) Azm(89.3) TVD(6959.58)
VS(1572.84) NS(-220.66) EW(1564.89)



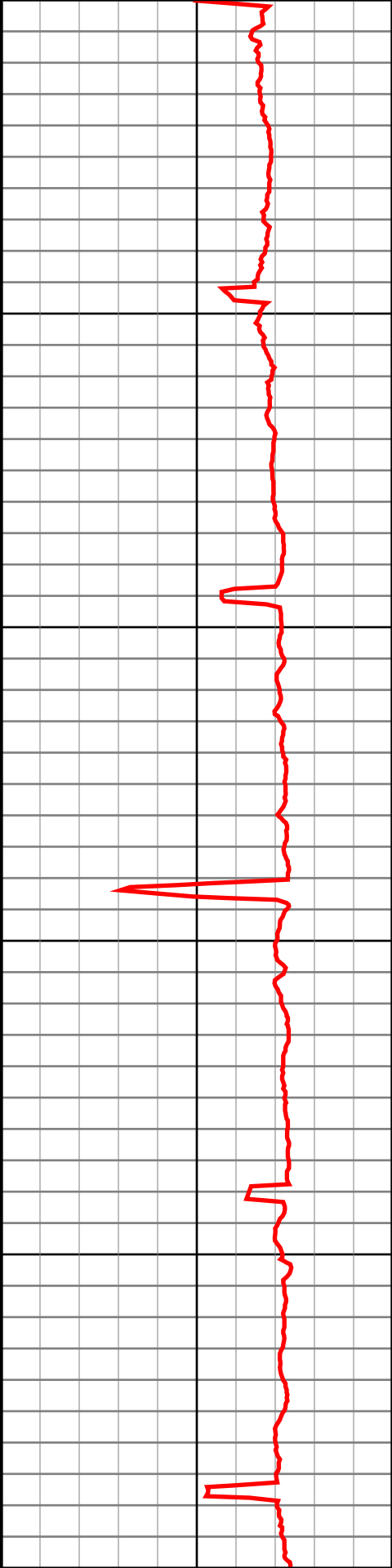
8600

8700

8800

8900

9000



#80 MD(8522.00) Inc(90.6) Azm(89.3) TVD(6958.59)
VS(1667.69) NS(-219.50) EW(1659.88)

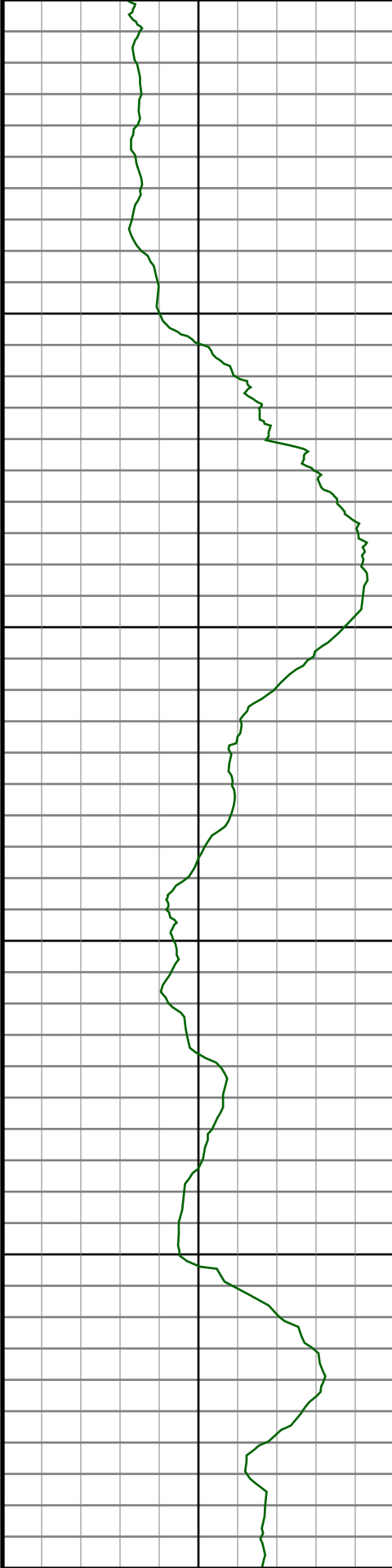
#81 MD(8617.00) Inc(90.5) Azm(88.9) TVD(6957.68)
VS(1762.53) NS(-218.01) EW(1754.86)

#82 MD(8712.00) Inc(90.4) Azm(89.3) TVD(6956.93)
VS(1857.36) NS(-216.51) EW(1849.85)

#83 MD(8806.00) Inc(90.5) Azm(89.5) TVD(6956.19)
VS(1951.23) NS(-215.53) EW(1943.84)

#84 MD(8901.00) Inc(90.4) Azm(89.5) TVD(6955.45)
VS(2046.10) NS(-214.70) EW(2038.83)

#85 MD(8996.00) Inc(90.1) Azm(89.3) TVD(6955.03)
VS(2140.97) NS(-213.71) EW(2133.82)



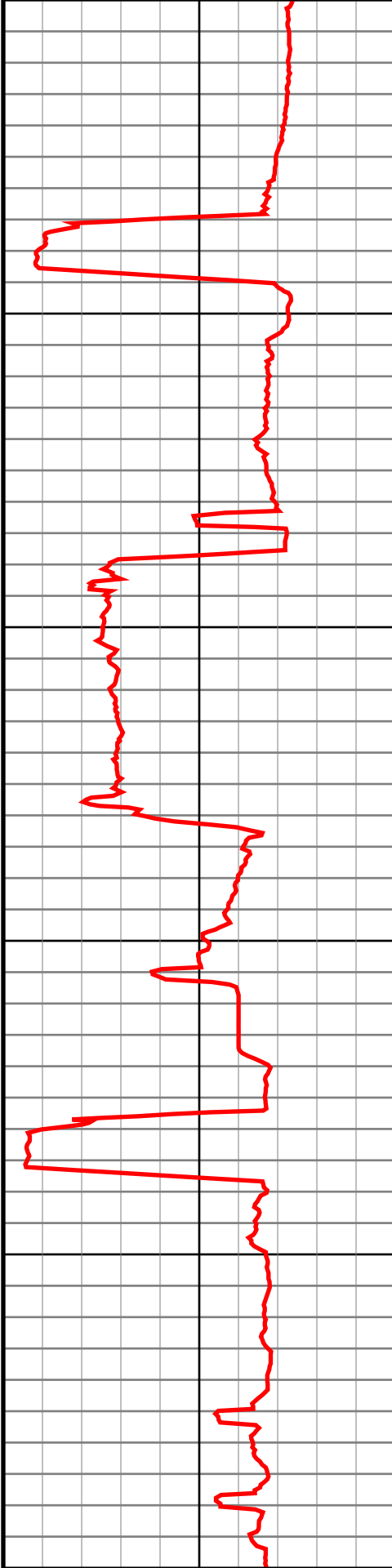
9100

9200

9300

9400

9500



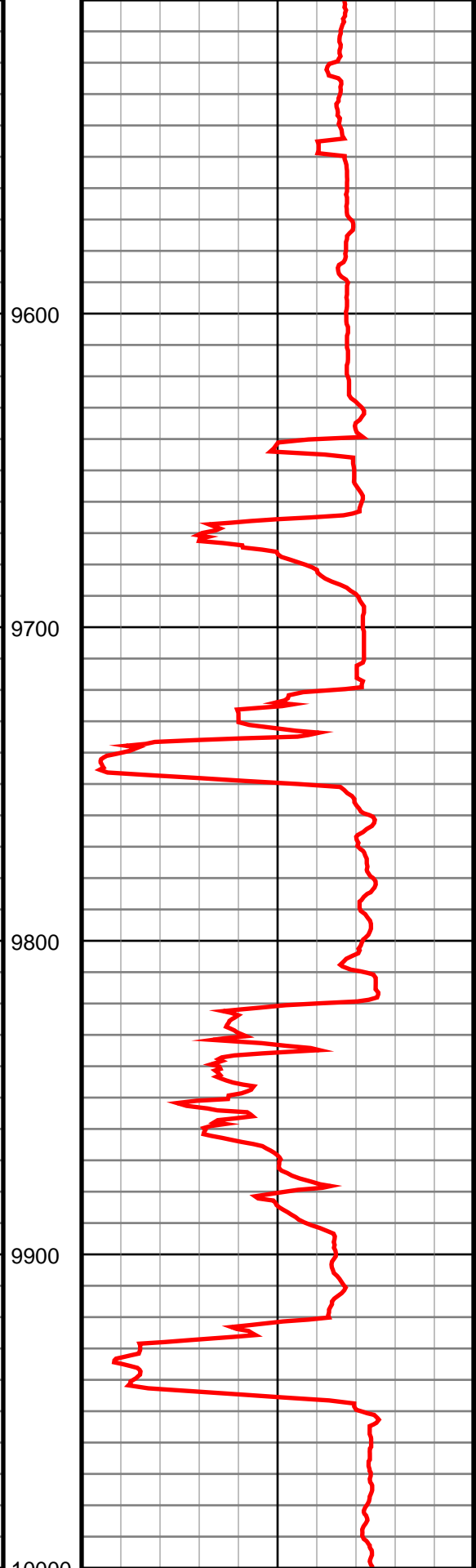
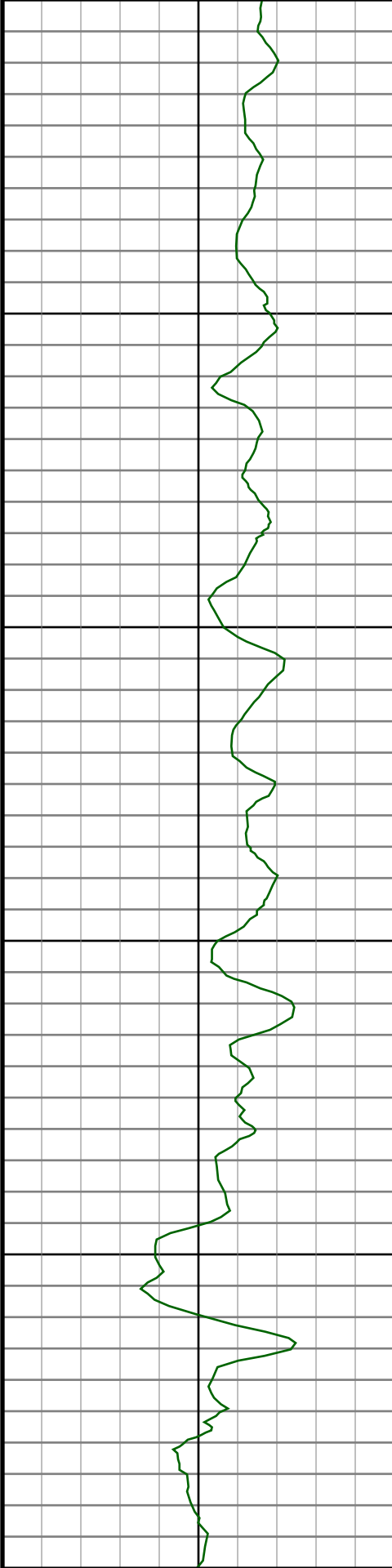
#86 MD(9091.00) Inc(91.6) Azm(88.2) TVD(6953.62)
VS(2235.76) NS(-211.63) EW(2228.79)

#87 MD(9186.00) Inc(91.7) Azm(88.4) TVD(6950.89)
VS(2330.47) NS(-208.82) EW(2323.71)

#88 MD(9281.00) Inc(92.2) Azm(88.0) TVD(6947.66)
VS(2425.16) NS(-205.83) EW(2418.60)

#89 MD(9375.00) Inc(90.6) Azm(89.5) TVD(6945.36)
VS(2518.93) NS(-203.78) EW(2512.55)

#90 MD(9470.00) Inc(90.4) Azm(89.1) TVD(6944.53)
VS(2613.78) NS(-202.62) EW(2607.54)



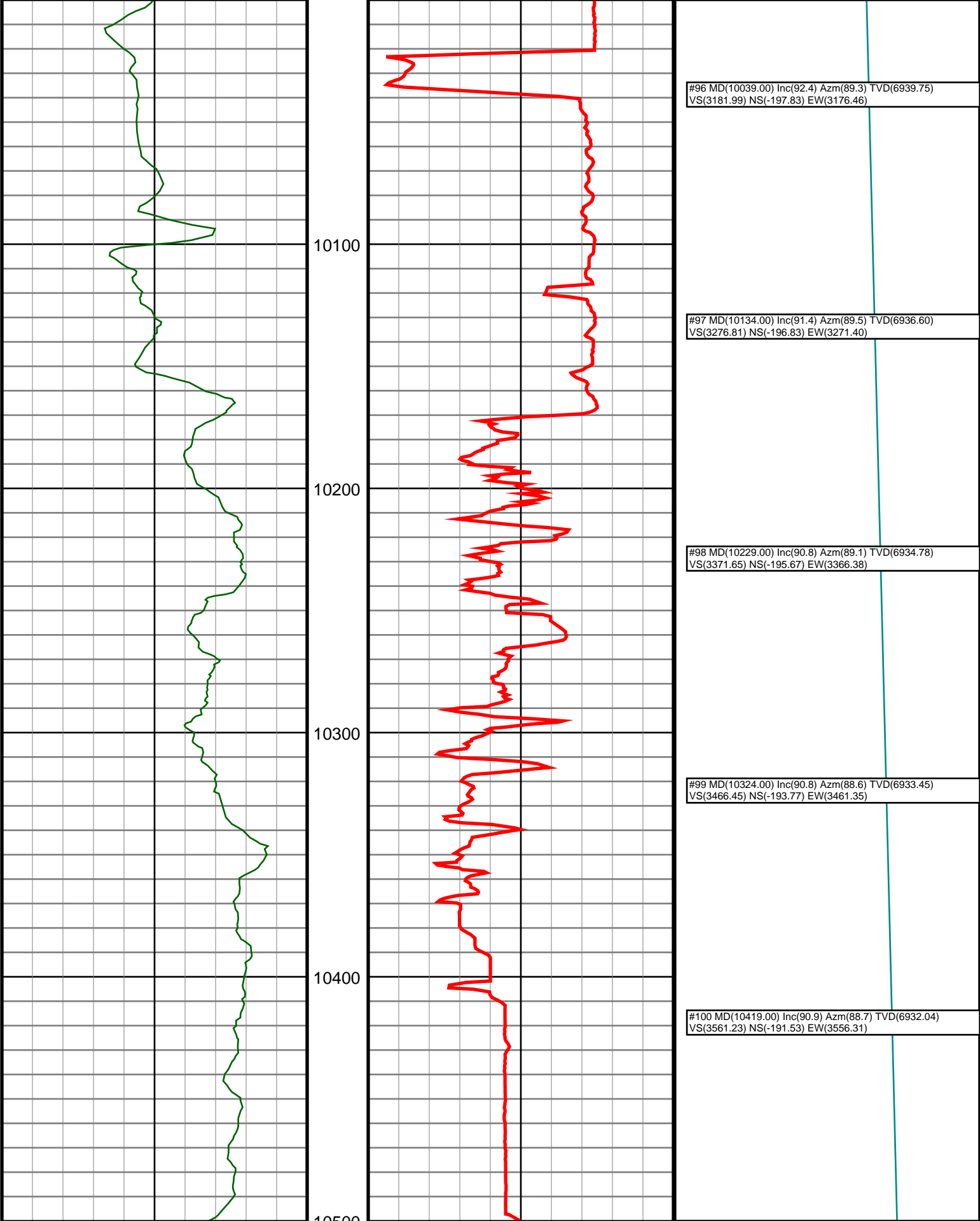
#91 MD(9565.00) Inc(90.0) Azm(89.6) TVD(6944.20)
VS(2708.64) NS(-201.55) EW(2702.53)

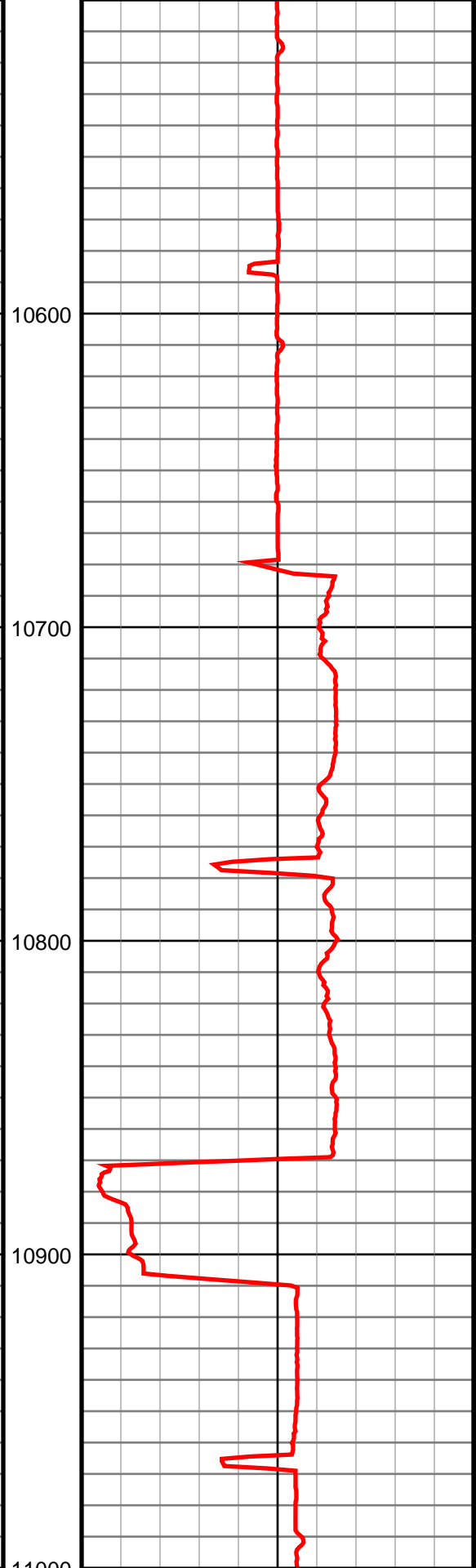
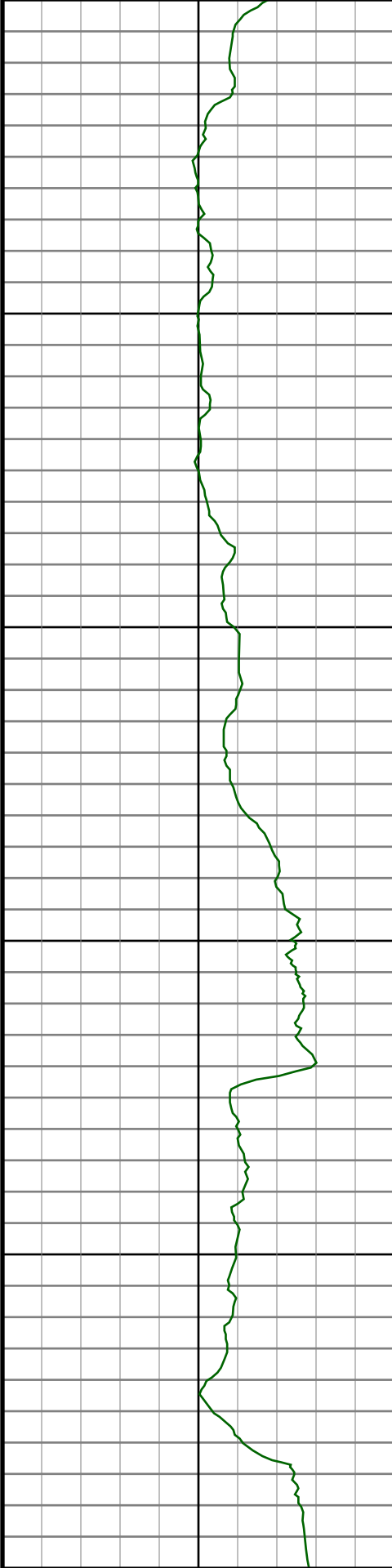
#92 MD(9660.00) Inc(89.9) Azm(90.2) TVD(6944.28)
VS(2803.55) NS(-201.38) EW(2797.53)

#93 MD(9755.00) Inc(90.7) Azm(89.5) TVD(6943.78)
VS(2898.45) NS(-201.13) EW(2892.53)

#94 MD(9850.00) Inc(90.1) Azm(89.3) TVD(6943.12)
VS(2993.32) NS(-200.14) EW(2987.52)

#95 MD(9945.00) Inc(90.8) Azm(89.3) TVD(6942.37)
VS(3088.17) NS(-198.98) EW(3082.51)





#101 MD(10514.00) Inc(90.9) Azm(88.4) TVD(6930.55)
VS(3656.00) NS(-189.13) EW(3651.27)

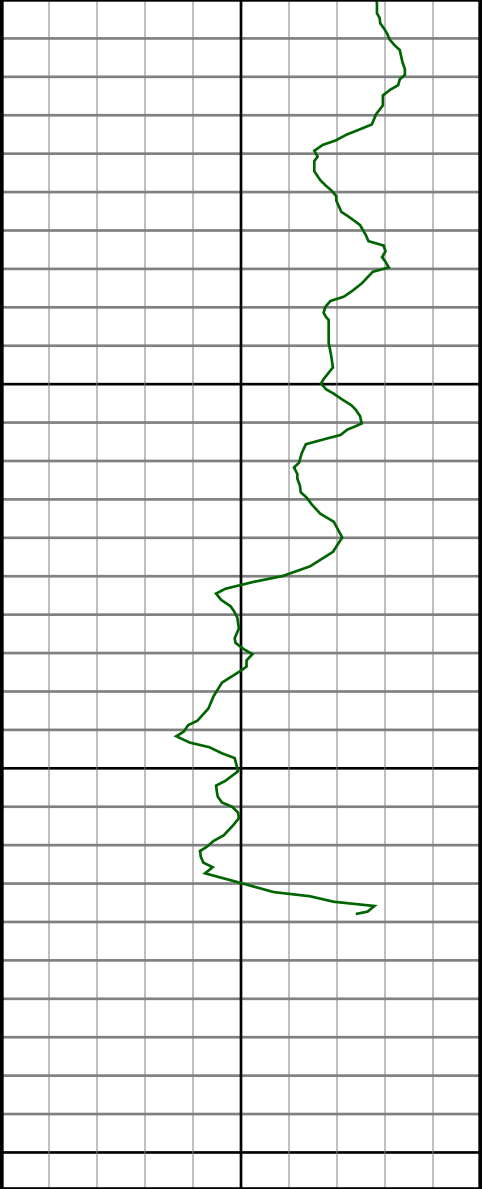
#102 MD(10608.00) Inc(91.3) Azm(88.7) TVD(6928.74)
VS(3749.77) NS(-186.75) EW(3745.22)

#103 MD(10703.00) Inc(91.4) Azm(87.9) TVD(6926.51)
VS(3844.50) NS(-183.93) EW(3840.15)

#104 MD(10798.00) Inc(91.0) Azm(86.6) TVD(6924.52)
VS(3939.09) NS(-179.37) EW(3935.02)

#105 MD(10893.00) Inc(91.8) Azm(89.5) TVD(6922.19)
VS(4033.77) NS(-176.14) EW(4029.93)

#106 MD(10988.00) Inc(91.6) Azm(89.8) TVD(6919.38)
VS(4128.62) NS(-175.56) EW(4124.88)

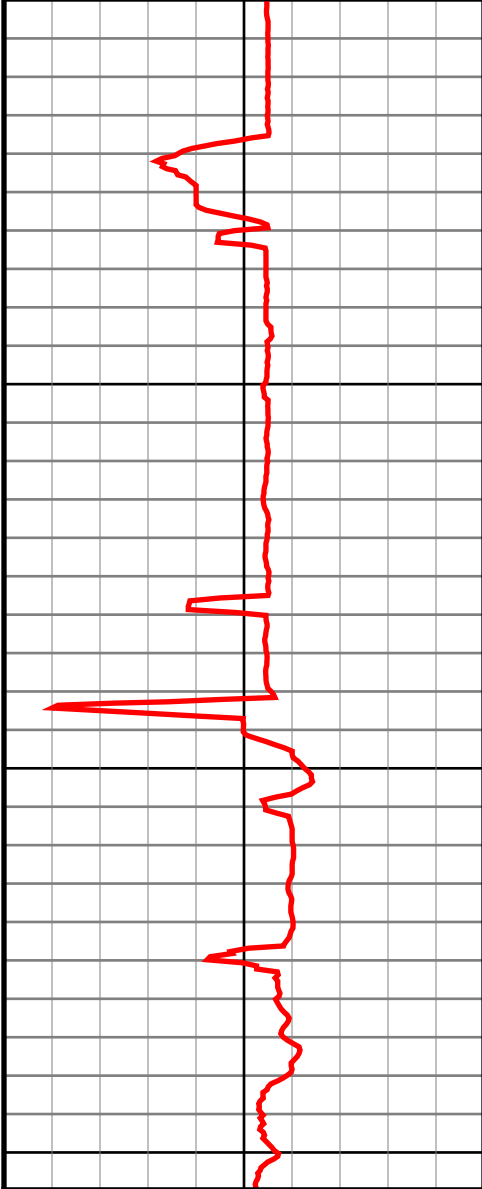


11100

11200

11300

0.0 Gamma 250.0
250.0 API 500.0



0.0 ROP 500.0
500.0 0 1000.0

#107 MD(11082.00) Inc(91.4) Azm(89.5) TVD(6916.92)
VS(4222.47) NS(-174.99) EW(4218.85)

#108 MD(11177.00) Inc(91.6) Azm(89.5) TVD(6914.43)
VS(4317.32) NS(-174.16) EW(4313.81)

#109 MD(11240.00) Inc(92.2) Azm(89.3) TVD(6912.34)
VS(4380.19) NS(-173.50) EW(4376.77)

11300.0:Bit Projection @11310 INC: 92.2 AZM: 89.3
TVD:6909.65 VS: 4450.04

0.0 VS 5000.0
5000.0 ft 10000.0