

# COLUMBINE LOGGING

Scale: 5" / 100'  
Measured Depth Log

**Well Name** No Worries PC G14-63-1HN

**Location** SWSW SEC 14 T4N R65W

**State** COLORADO

**County** WELD

**Country** UNITED STATES

**Rig Number** H&P 273

**API Number** 05-123-36328

**Region** DJ BASIN

**Field** WATTENBERG

**Spud Date** 1/13/2014

**Drilling Completed** 1/15/2014

**Surface Coordinates** 1247' FSL; 276' FWL

**Bottom Hole Coordinates** 1000' FSL; 535' FEL

**Ground Elevation** 4695'

**K.B. Elevation** 4844'

**Logged Interval** 635' To 6200'

**Total Depth** 6200'

**Formation** NIOBRARA

**Type of Drilling Fluid** LSND

## Operator

**Company** NOBLE ENERGY INC.

**Address** 1625 Broadway Suite 2200  
Denver, CO 80202

## Geologist

**Name** SARAH COMPTON

**Company** NOBLE ENERGY INC.

**Address** 1625 Broadway Suite 2200  
Denver, CO 80202

## Other

## Rock Types

UNKNOWN	CEMENT	IGNEOUS	SHALE GRAY
CHALK	CHERT	LIMESTONE	SHALY SILTSTONE
MARLSTONE	CLAY CHOKE SAND	SIDERITE or LIMONITE	SILTSTONE
SANDSTONE	CLAYSTONE	METAMORPHIC	TILL
SHALY SANDSTONE	COAL	NO SAMPLE	TUFF
SILTY SHALE	CONGLOMERATE	SALT	WELDED TUFF
ANHYDRITE	DOLOMITE	SALT- PEPPER SAND	
BENTONITE	GRANITE	SHALE	
BRECCIA	GYPSUM	SHALE COLORED	

## Accessories

### Fossils

ALGAE
AMPHIPORA
BELEMNITE
BIOCLASTIC
BRACHIOIPOD
BRYOZOA
CEPHALOPOD
CORAL
CRINOID
ECHINOID
FISH
FORAMINIFERA

### Fossils

FOSSIL
GASTROPOD
INOCERAMUS
OOLITE
OSTRACOD
PELECYPOD
PELLET
PISOLITE
PLANT REMAINS
PLANT SPORES
SCAPHOPOD
STROMATOPOROID

### Minerals

### Minerals

ANHYDRITIC
ARGILLACEOUS
ARGILLITE GRAIN
BENTONITE
BITUMENOUS SUBSTANCE
BRECCIA FRAGMENTS
CALCAREOUS
CARBONACEOUS FLAKES
CHTDK
CHTLT
COAL - THIN BEDS
DOLOMITIC
FELDSPAR
FERRUGINOUS PELLET

### Minerals

FERRUGINOUS
GLAUCONITE
GYPSIFEROUS
HEAVY MINERAL
KAOLIN
MARLSTONE
MINERAL CRYSTALS
NODULES
PHOSPHATE PELLETS
PYRITE
SALT CAST
SANDY
SILICEOUS
SILTY

### Minerals

TUFFACEOUS
ANHYDRITE STRINGER
BENTONITE STRINGER
COAL STRINGER
DOLOMITE STRINGER
GYPSUM STRINGER
LIMESTONE STRINGER
MARLSTONE (CALC) STRG
MARLSTONE (DOL) STRG
SANDSTONE STRINGER
SHALE STRINGER
SILTSTONE STRINGER

### Stringer

## Other Symbols

### Oil Show

DEAD
EVEN
QUESTIONABLE
SPOTTED STAINING

### Porosity

EARTHY
FENESTRAL
FRACTURE
INTERCRYSTALLINE
INTEROOLITIC

### Oil Show

MOLDIC
ORGANIC
PINPOINT
VUGGY

### Engineering

BIT
CONNECTION (LEFT)
CONNECTION (RIGHT)
CONNECTION GAS
CORE - LOST
CORE - RECOVERED
DST INTERVAL

### Other Symbols

FAULT
FORMATION TOP
GAS SHOW
MN DEPTH
NORMAL FAULT
OIL SHOW
OVERTURNED STRATA
REVERSE FAULT
SIDEWALL CORE (LEFT)
SIDEWALL CORE (RIGHT)
SLIDE
SURVEY
TRIP GAS

### Other Symbols

WIRELINE TESTED - LEFT
WIRELINE TESTED - RT

### Rounding

ANGULAR
ROUNDED
SUBANG
SUBRND

### Textures

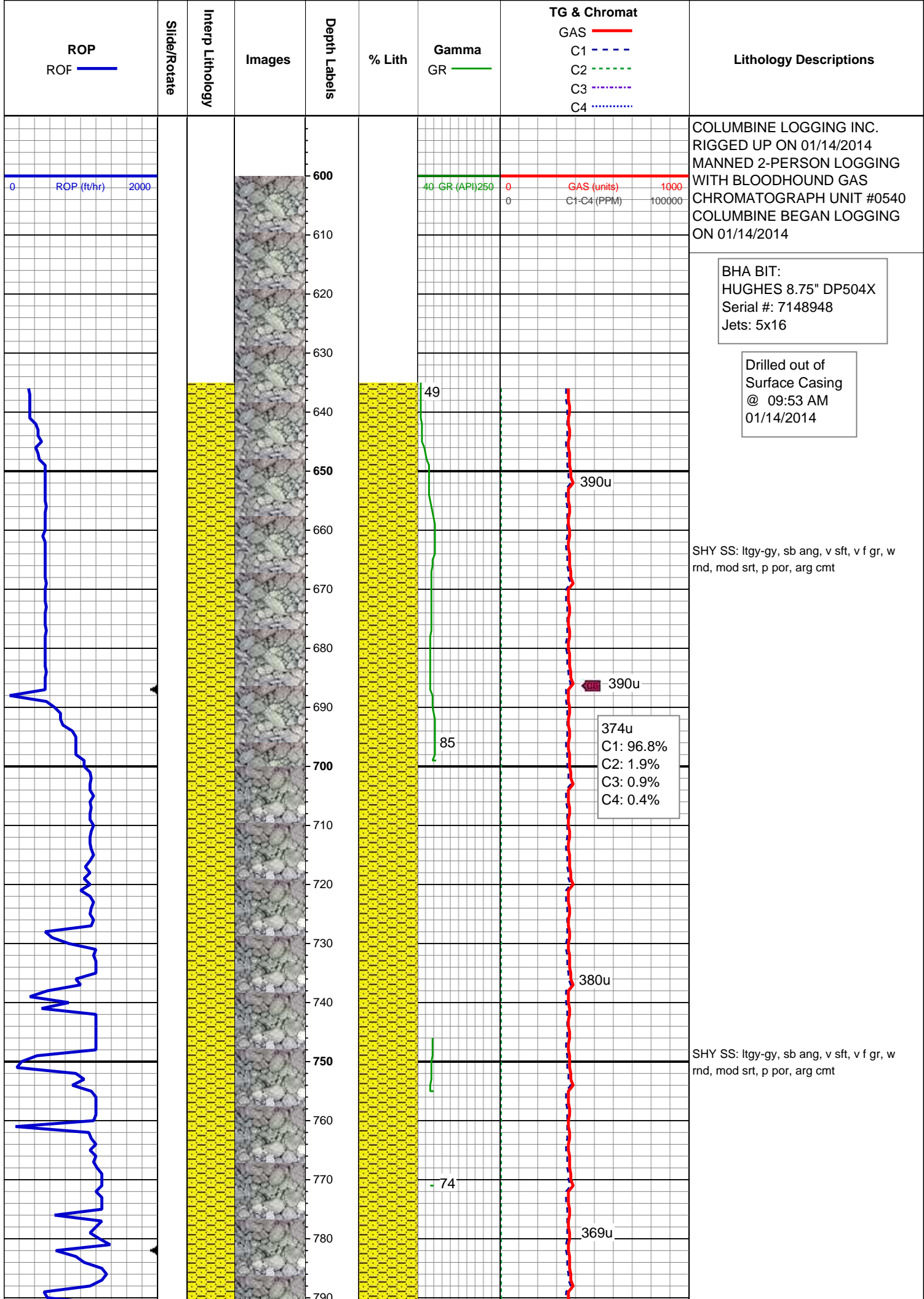
BOUNDSTONE
CHALKY
CRYPTOXLN

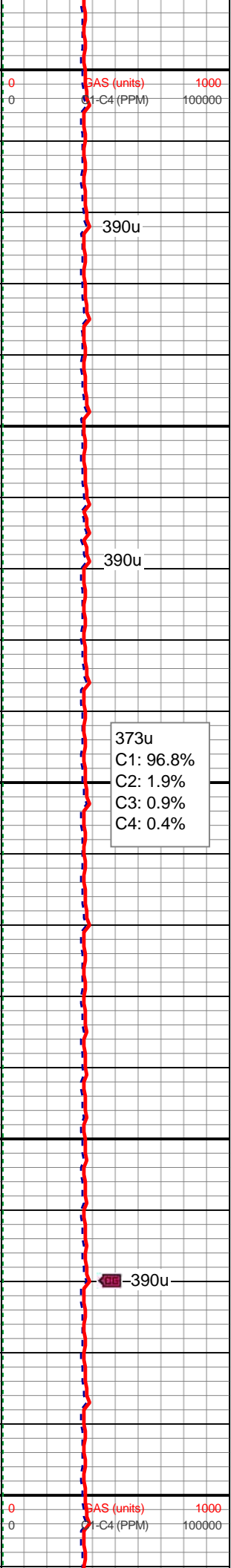
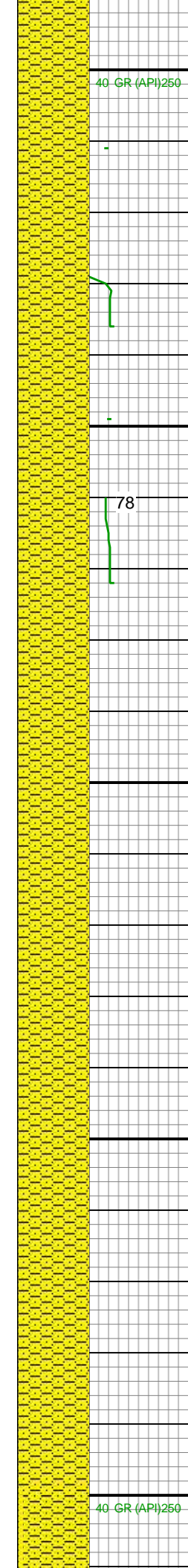
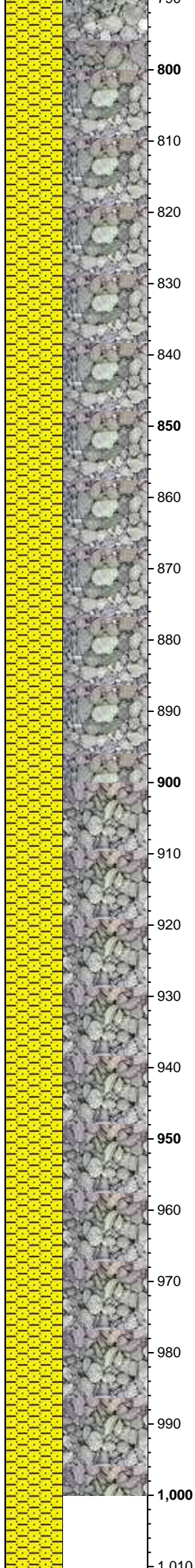
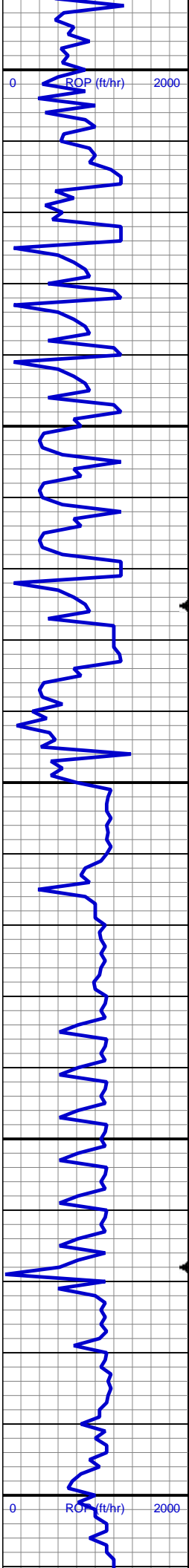
### Other Symbols

EARTHY
FINELYXLN
GRAINSTONE
LITHOGRAPHIC
MICROXLN
MUDSTONE
PACKSTONE
WACKESTONE

### Sorting

MODERATE
POOR
WELL





MD: 815'  
TVD: 814.99'  
Inclination: 0.4 °  
Azimuth: 200.7 °  
VS: 0.65'

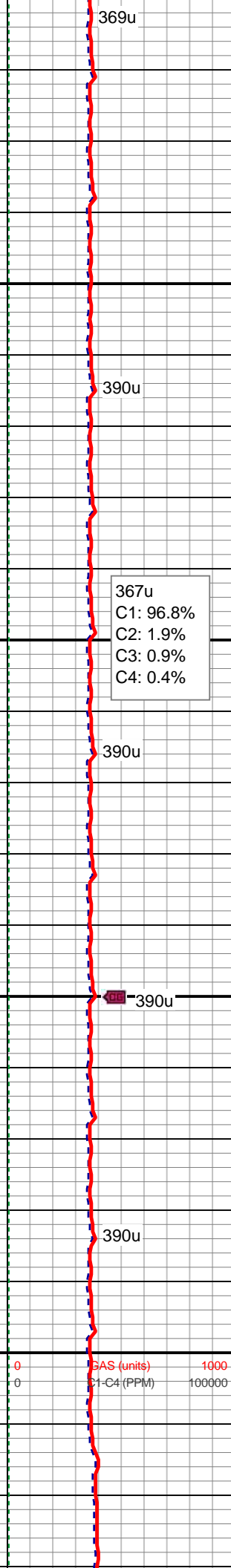
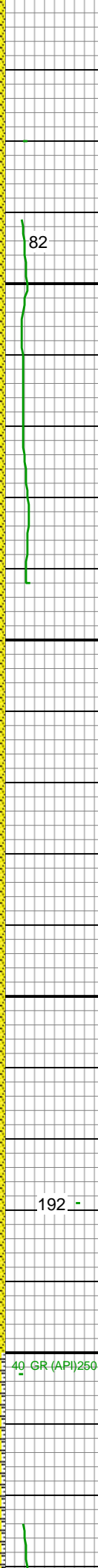
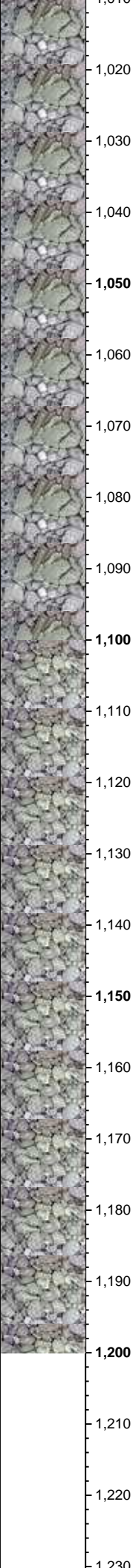
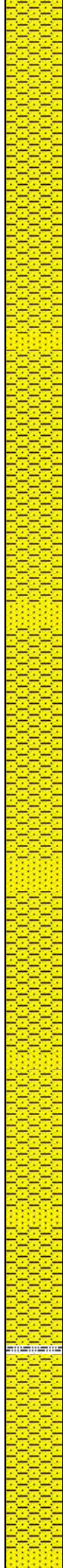
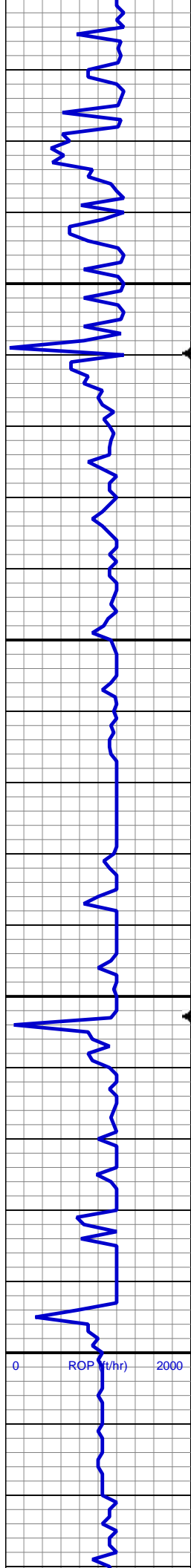
SHY SS: ltgy-gy, sb ang, v sft, v f gr, w  
rnd, mod srt, p por, arg cmt

373u  
C1: 96.8%  
C2: 1.9%  
C3: 0.9%  
C4: 0.4%

SHY SS: ltgy-gy, sb ang, v sft, v f gr, w  
rnd, mod srt, p por, arg cmt

MD: 1,000'  
TVD: 999.99'  
Inclination: 0.4 °  
Azimuth: 213.4 °  
VS: 0.12'





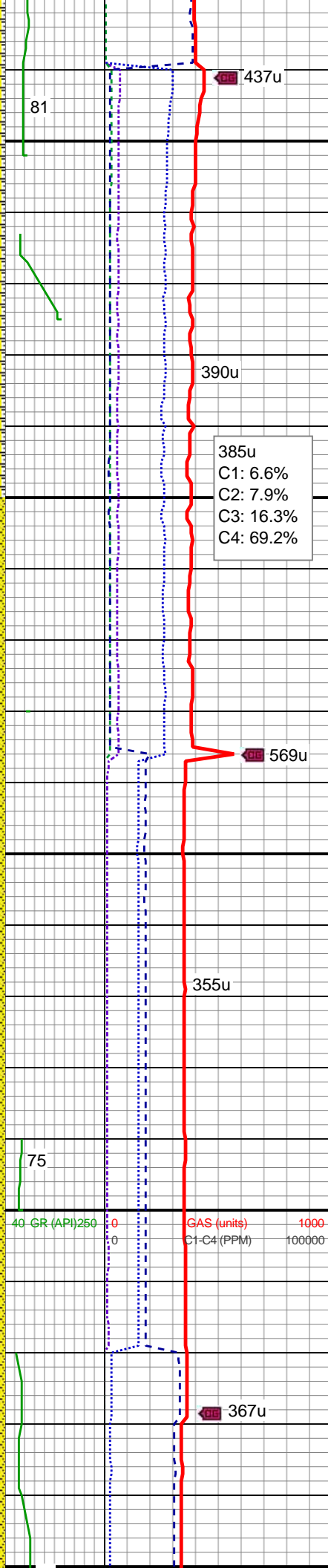
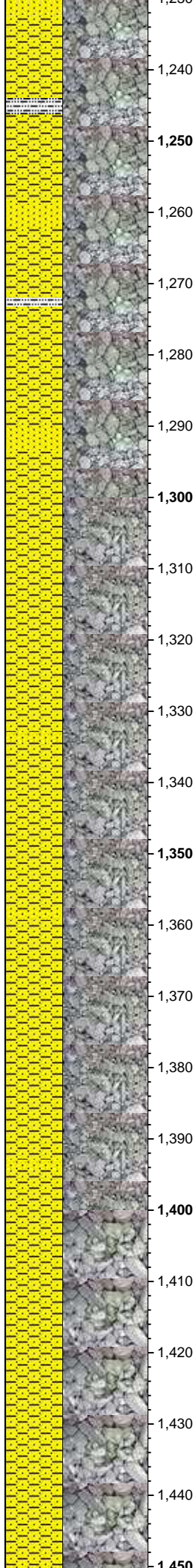
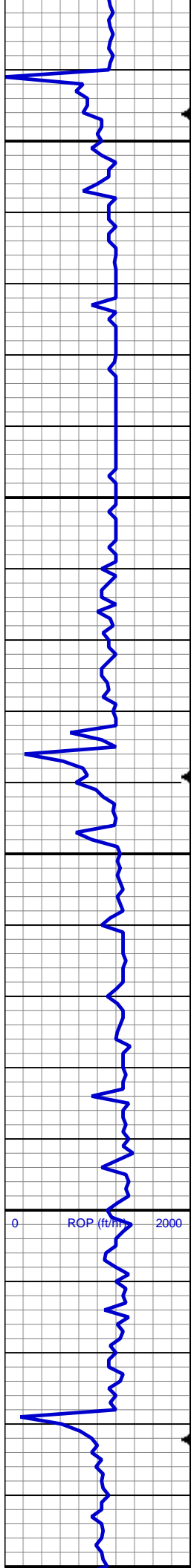
SHY SS: ltgy-gy, sb ang, v sft, v f gr, w  
rnd, mod srt, p por, arg cmt

SS: ltgy-wh-op, sb ang, v fri, f gr - v f gr,  
mod rnd, p srt, p por, arg cmt, occ glau,  
tr lith frag

SHY SS: ltgy-gy, sb ang, v sft, v f gr, w  
rnd, mod srt, p por, arg cmt

SS: ltgy-wh-op, sb ang, v fri, f gr - v f gr,  
mod rnd, p srt, p por, arg cmt, occ glau,  
tr lith frag

MD: 1,186'  
TVD: 1,185.98'  
Inclination: 0.6 °  
Azimuth: 210.4 °  
VS: -0.67'



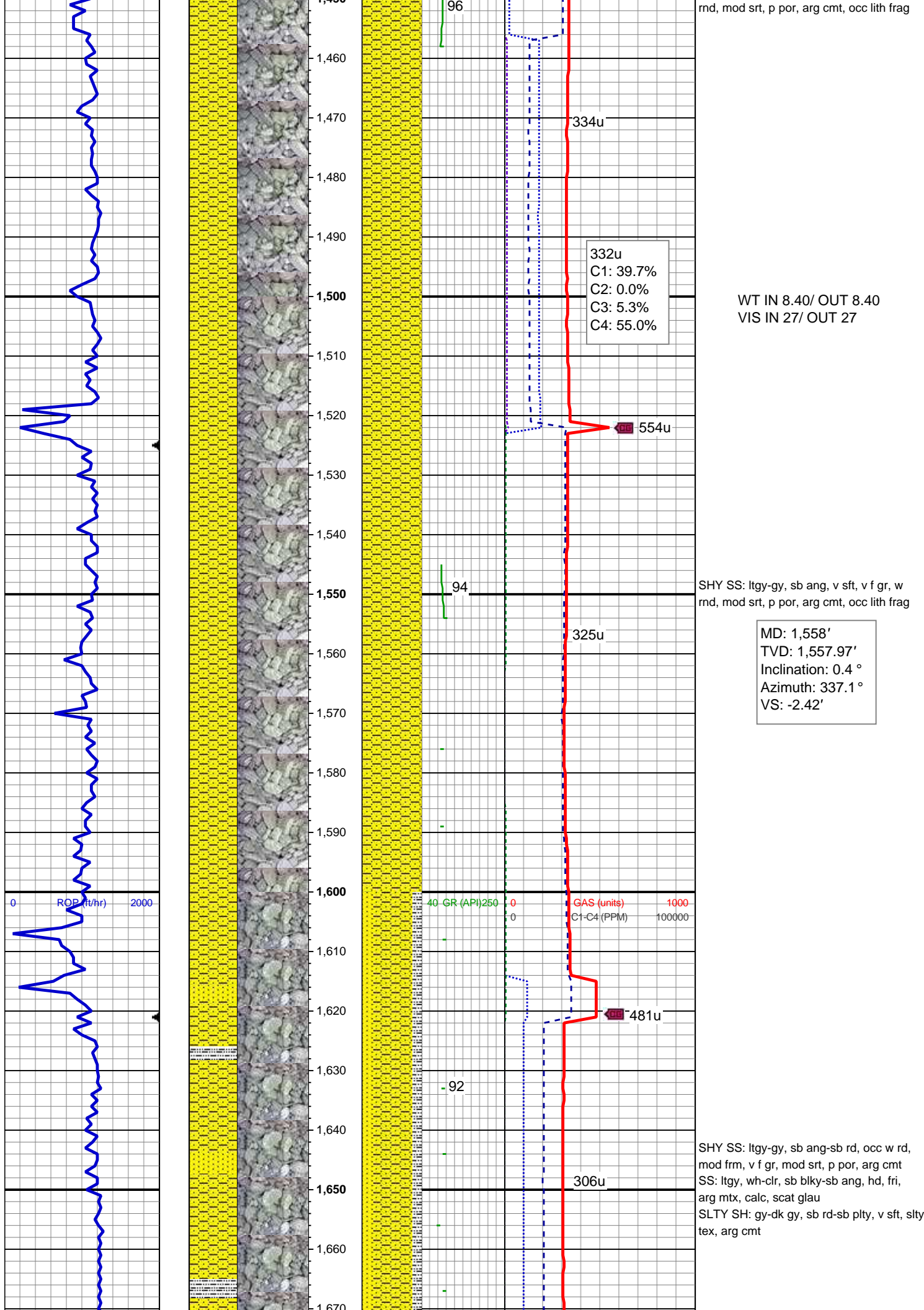
SHY SS: ltgy-gy, sb ang-sb rd, occ w rd, mod frm, v f gr, mod srt, p por, arg cmt  
SS: ltgy, wh-clr, sb blkgy-sb ang, hd, fri, arg mtx, calc, scat glau  
SLTY SH: gy-dk gy, sb rd-sb plty, v sft, slty tex, arg cmt

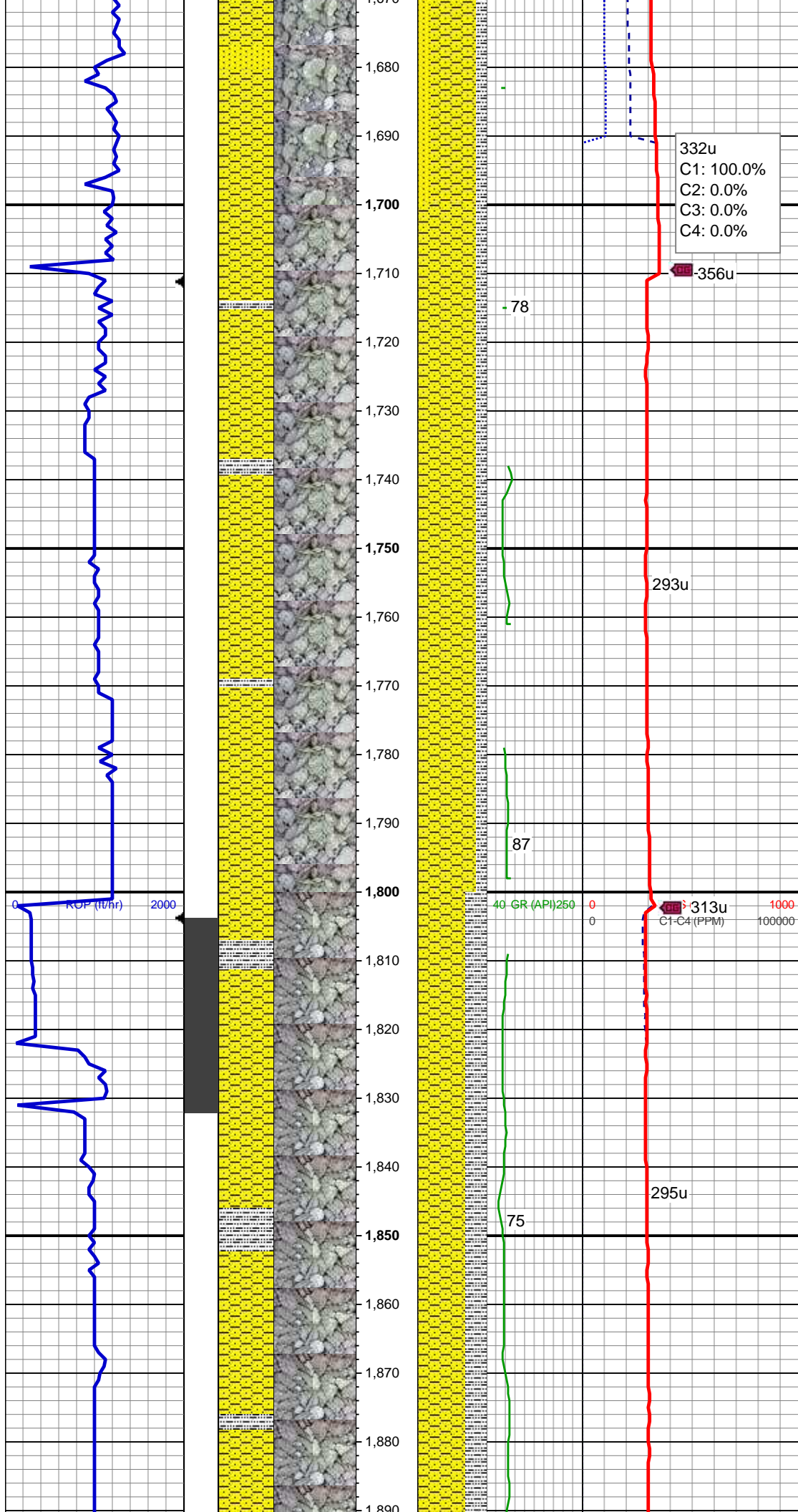
SHY SS: ltgy-gy, sb ang, v sft, v f gr, w rnd, mod srt, p por, arg cmt  
SS: ltgy-wh-op, sb ang, v fri, f gr - v f gr, mod rnd, p srt, p por, arg cmt, occ glau, tr lith frag

MD: 1,372'  
TVD: 1,371.97'  
Inclination: 0.4 °  
Azimuth: 233.8 °  
VS: -1.64'

SHY SS: ltgy-gy, sb ang, v sft, v f gr, w







332u  
C1: 100.0%  
C2: 0.0%  
C3: 0.0%  
C4: 0.0%

356u

78

MD: 1,744'  
TVD: 1,743.96'  
Inclination: 0.5 °  
Azimuth: 43.9 °  
VS: -2.16'

SHY SS: ltgy-gy, sb ang-sb rd, occ w rd,  
mod frm, v f gr, mod srt, p por, arg cmt,  
occ lith frag  
SLTY SH: gy-dk gy, sb rd-sb plty, v sft, slty  
tex, arg cmt

293u

87

40 GR (API) 250

0

0

313u

C1-C4 (PPM)

1000

100000

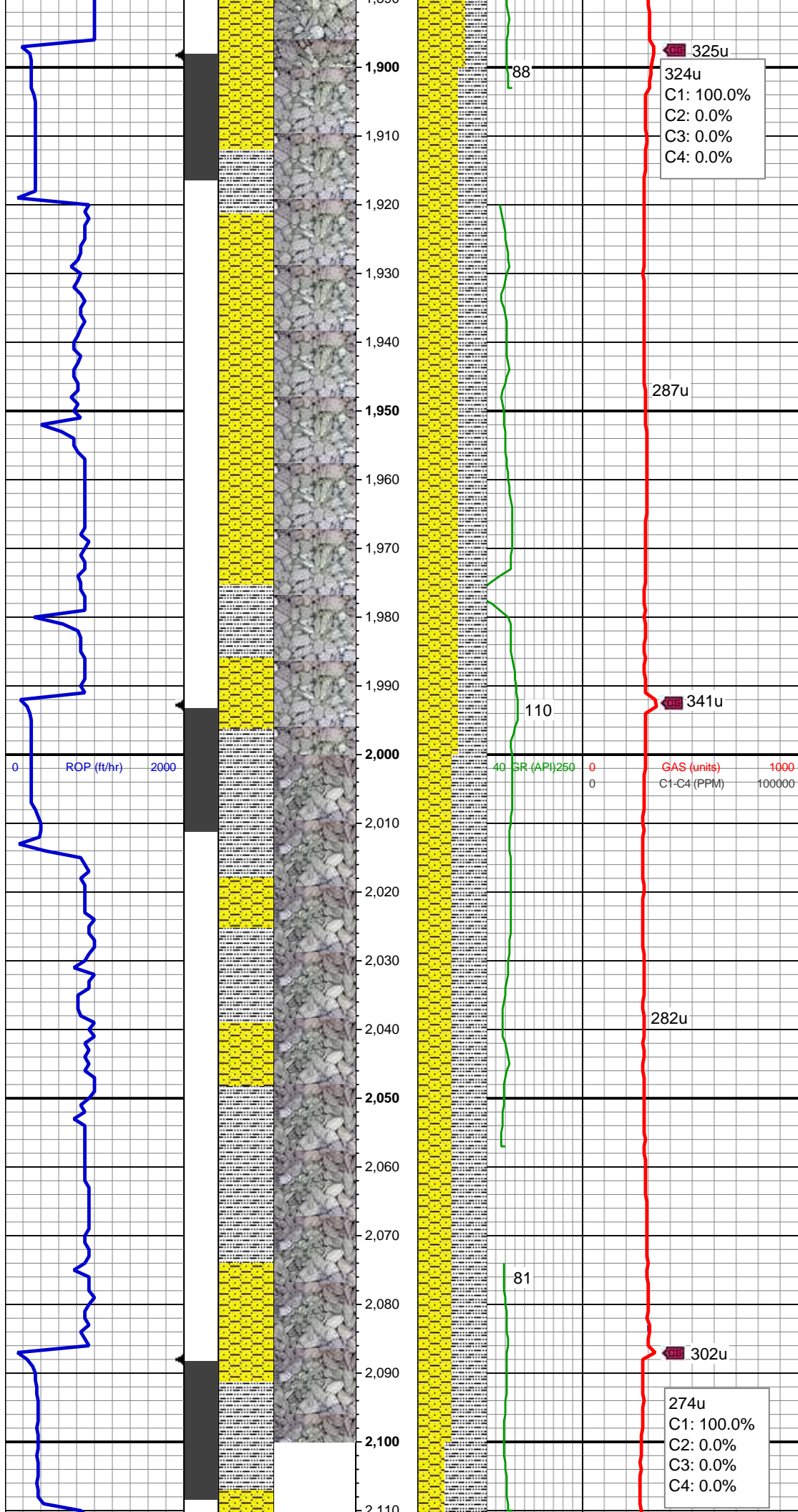
MD: 1,838'  
TVD: 1,837.96'  
Inclination: 1.1 °  
Azimuth: 222.2 °  
VS: -2.47'

SHY SS: ltgy-gy, sb ang-sb rd, occ w rd,  
mod frm, v f gr, mod srt, p por, arg cmt,  
occ lith frag  
SLTY SH: gy-dk gy, sb rd-sb plty, v sft, slty  
tex, arg cmt

295u

75





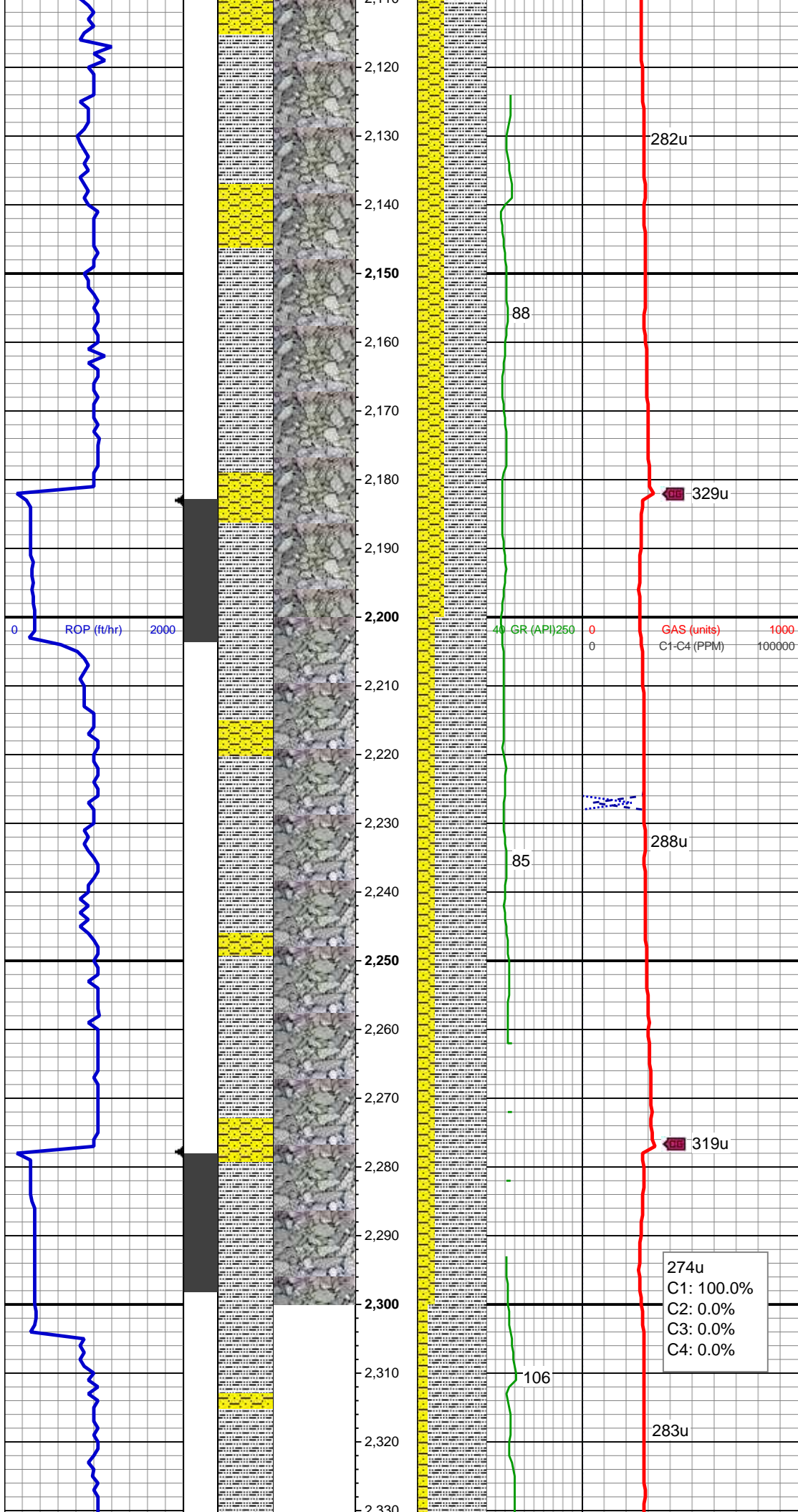
MD: 1,933'  
TVD: 1,932.9'  
Inclination: 2.8 °  
Azimuth: 222.2 °  
VS: -4.54'

SHY SS: ltgy-gy, sb ang-sb rd, occ w rd,  
mod frm, v f gr, mod srt, p por, arg cmt,  
occ lith frag  
SLTY SH: gy-dk gy, sb rd-sb plty, v sft, slty  
tex, arg cmt

WT IN 8.50/ OUT 8.50  
VIS IN 26/ OUT 26

MD: 2,028'  
TVD: 2,027.72'  
Inclination: 4.2 °  
Azimuth: 217.2 °  
VS: -8.01'

SHY SS: ltgy-gy, sb ang-sb rd, occ w rd,  
mod frm, v f gr, mod srt, p por, arg cmt,  
occ lith frag  
SLTY SH: gy-dk gy, sb rd-sb plty, v sft, slty  
tex, arg cmt



MD: 2,123'  
TVD: 2,122.38'  
Inclination: 5.5 °  
Azimuth: 217.1 °  
VS: -12.58'

SLTY SH: gy-dk gy, sb rd-sb plty, v sft, slty  
tex, arg cmt  
SHY SS: ltgy-gy, sb ang-sb rd, occ w rd,  
mod frm, v f gr, mod srt, p por, arg cmt,  
occ lith frag

MD: 2,218'  
TVD: 2,216.88'  
Inclination: 6.3 °  
Azimuth: 218.1 °  
VS: -18.21'

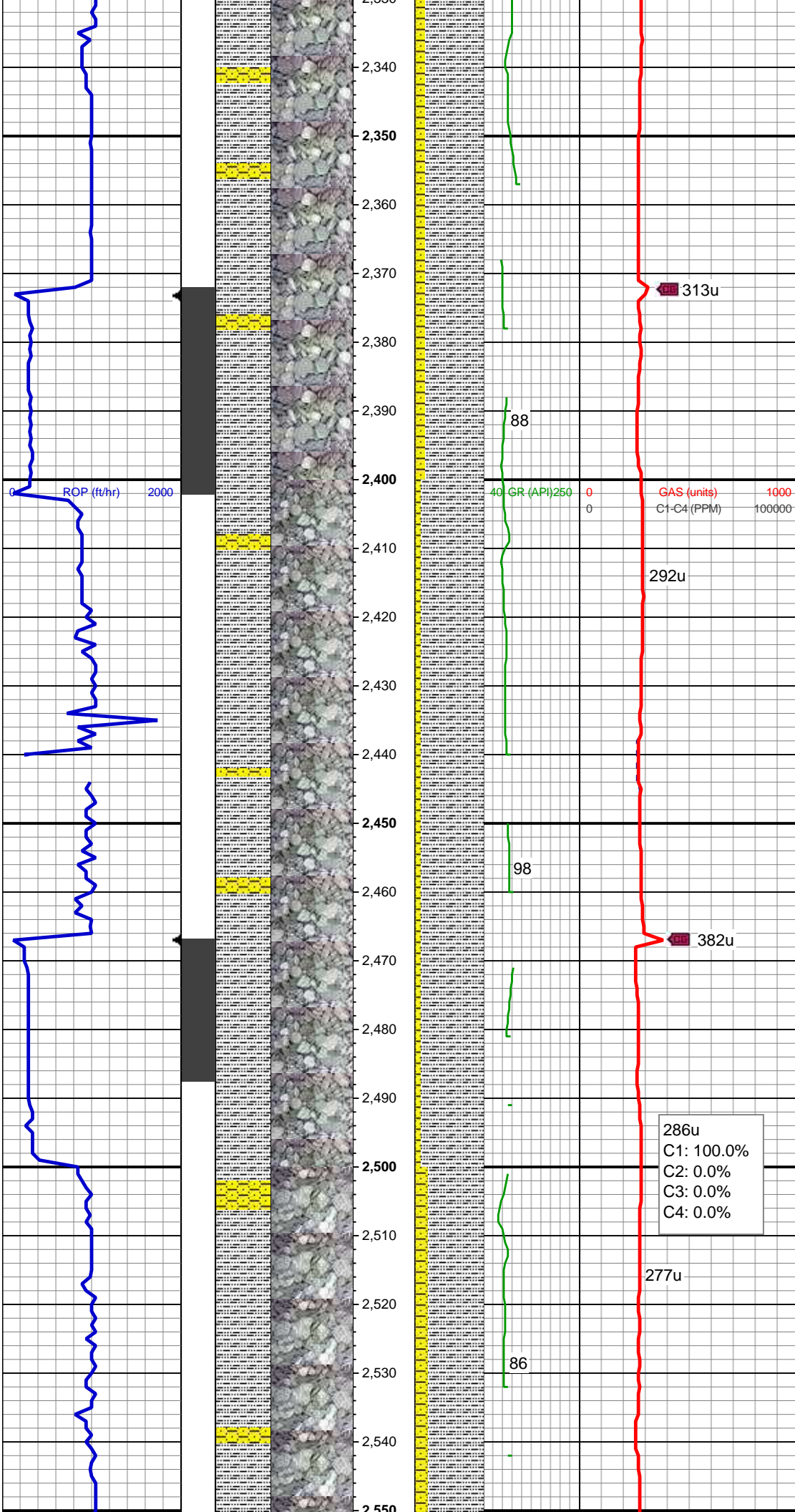
SLTY SH: gy-dk gy, sb rd-sb plty, v sft, slty  
tex, arg cmt  
SHY SS: ltgy-gy, sb ang-sb rd, occ w rd,  
mod frm, v f gr, mod srt, p por, arg cmt,  
occ lith frag

WT IN 8.50/ OUT 8.50  
VIS IN 27/ OUT 27

MD: 2,313'  
TVD: 2,311.25'  
Inclination: 6.9 °  
Azimuth: 222.3 °  
VS: -24.91'

274u  
C1: 100.0%  
C2: 0.0%  
C3: 0.0%  
C4: 0.0%





SLTY SH: gy-dk gy, sb rd-sb plty, v sft, slty  
tex, arg cmt  
SHY SS: ltgy-gy, sb ang-sb rd, occ w rd,  
mod frm, v f gr, mod srt, p por, arg cmt,  
occ lith frag

MD: 2,407'  
TVD: 2,404.44'  
Inclination: 8.1 °  
Azimuth: 224.6 °  
VS: -32.97'

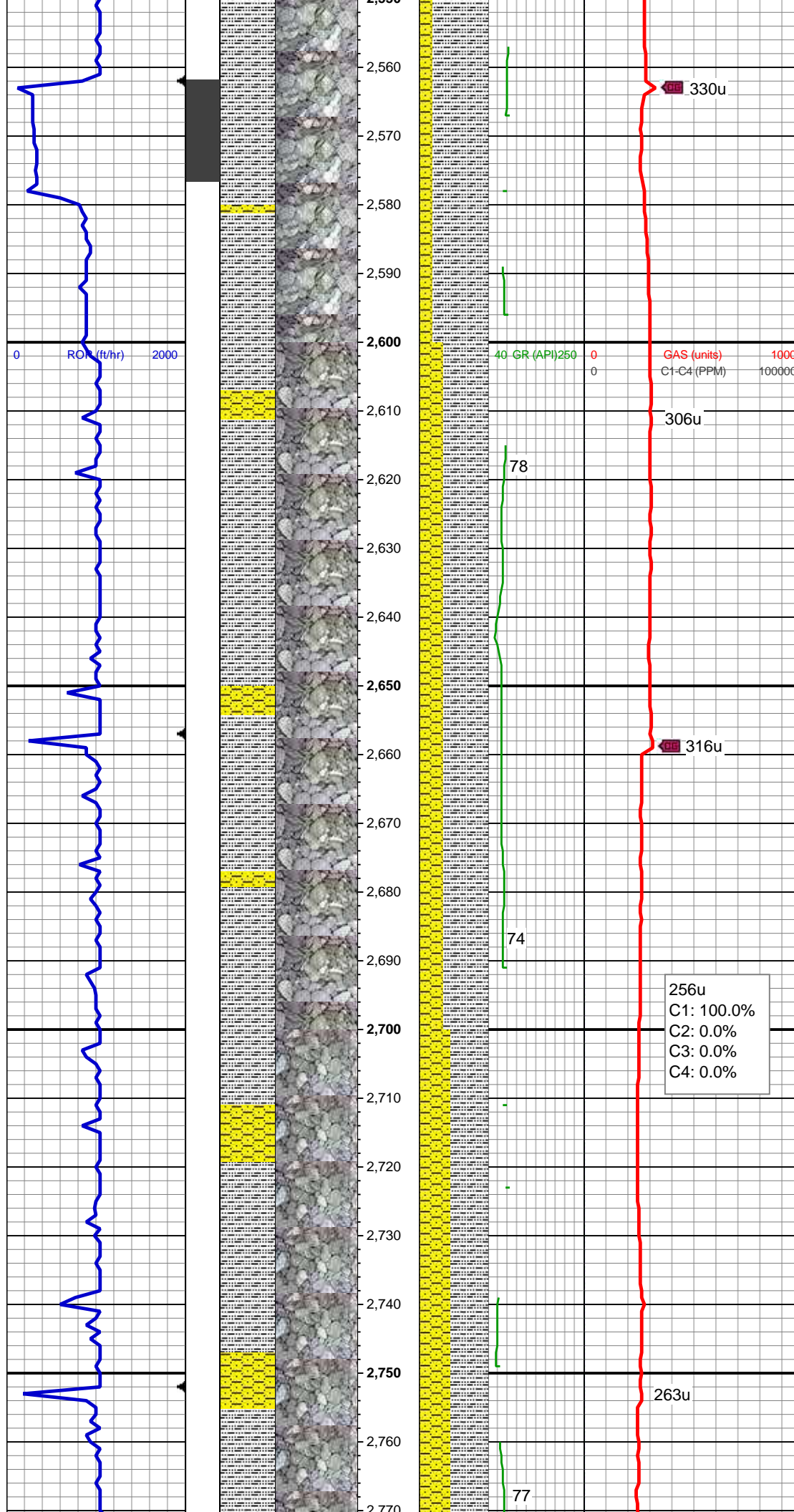
SLTY SH: gy-dk gy, sb rd-sb plty, v sft, slty  
tex, arg cmt  
SHY SS: ltgy-gy, sb ang-sb rd, occ w rd,  
mod frm, v f gr, mod srt, p por, arg cmt,  
occ lith frag

286u  
C1: 100.0%  
C2: 0.0%  
C3: 0.0%  
C4: 0.0%

MD: 2,502'  
TVD: 2,498.35'  
Inclination: 9.3 °  
Azimuth: 223.7 °  
VS: -42.53'

SLTY SH: gy-dk gy, sb rd-sb plty, v sft, slty  
tex, arg cmt, occ lith frag  
SHY SS: ltgy-gy, sb ang-sb rd, occ w rd,





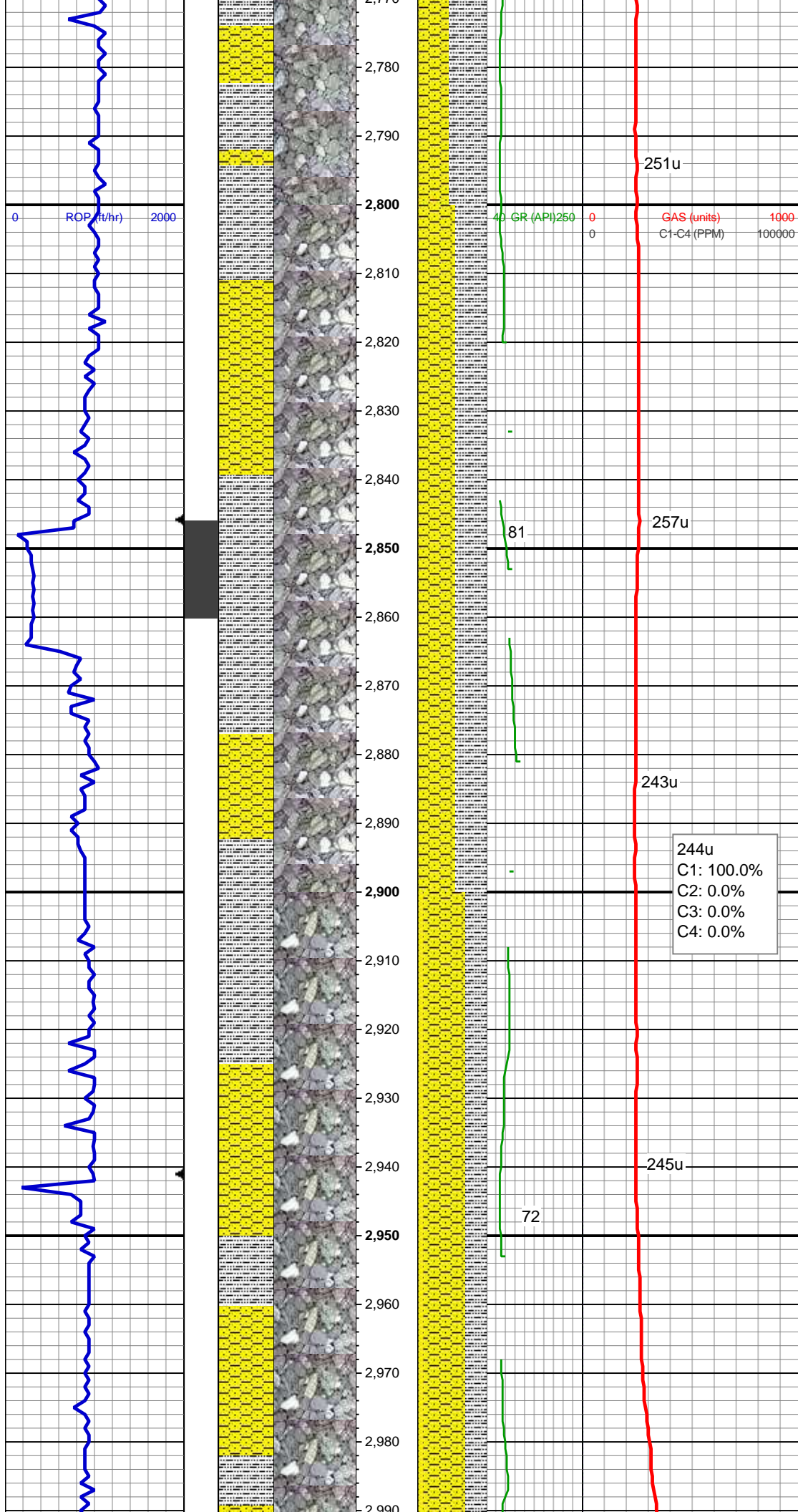
mod frm, v f gr, mod srt, p por, arg cmt,  
occ lith frag, tr dissim pyr

MD: 2,597'  
TVD: 2,592.03'  
Inclination: 9.8 °  
Azimuth: 218.1 °  
VS: -52.31'

SLTY SH: gy-dk gy, sb rd-sb plty, v sft, slty  
tex, arg cmt, occ lith frag  
SHY SS: ltgy-gy, sb ang-sb rd, occ w rd,  
mod frm, v f gr, mod srt, p por, arg  
cmt,occ lith frag, tr dissim pyr

MD: 2,692'  
TVD: 2,685.65'  
Inclination: 9.8 °  
Azimuth: 216.5 °  
VS: -61.55'

SLTY SH: gy-dk gy, sb rd-sb plty, v sft, slty  
tex, arg cmt, occ lith frag  
SHY SS: ltgy-gy, sb ang-sb rd, occ w rd,  
mod frm, v f gr, mod srt, p por, arg cmt,  
occ lith frag, tr dissim pyr



MD: 2,786'  
TVD: 2,778.29'  
Inclination: 9.7 °  
Azimuth: 215.8 °  
VS: -70.39'

WT IN 8.40/ OUT 8.40  
VIS IN 26/ OUT 26

SHY SS: ltgy-gy, sb ang-sb rd, occ w rd,  
mod frm, v f gr, mod srt, p por, arg cmt,  
occ lith frag, tr diss pyr  
SLTY SH: gy-dk gy, sb rd-sb plty, v sft, slty  
tex, arg cmt, occ lith frag

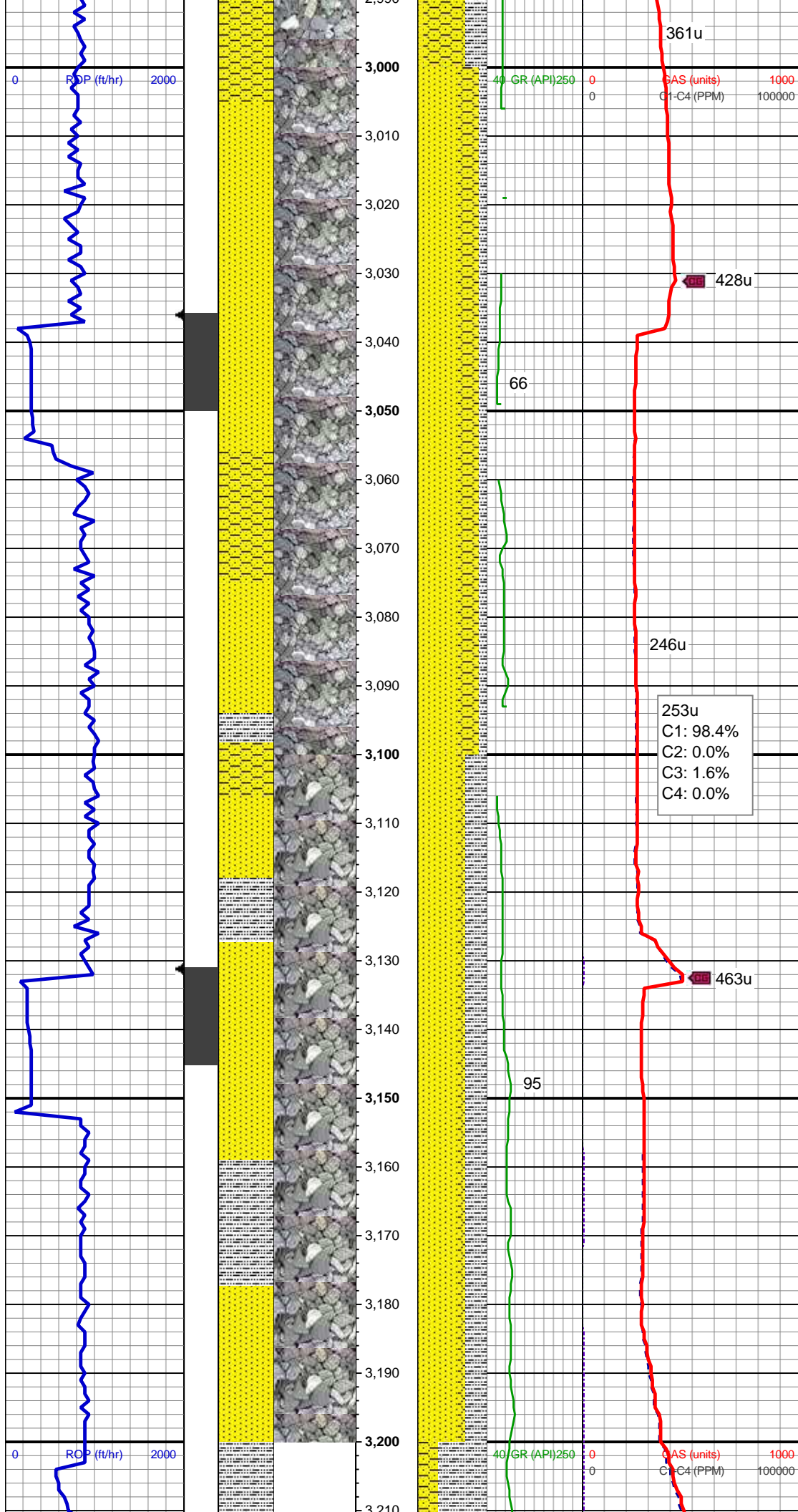
MD: 2,881'  
TVD: 2,871.96'  
Inclination: 9.5 °  
Azimuth: 221.6 °  
VS: -79.74'

244u  
C1: 100.0%  
C2: 0.0%  
C3: 0.0%  
C4: 0.0%

SHY SS: ltgy-gy, sb ang-sb rd, occ w rd,  
mod frm, v f gr, mod srt, p por, arg cmt  
SLTY SH: gy-dk gy, sb rd-sb plty, v sft, slty  
tex, arg cmt  
SS: ltgy, wh-clr, sb blkgy-sb ang, hd, fri,  
arg mtx, calc, scat glau

MD: 2,976'  
TVD: 2,965.74'  
Inclination: 8.9 °  
Azimuth: 219.7 °  
VS: -89.14'





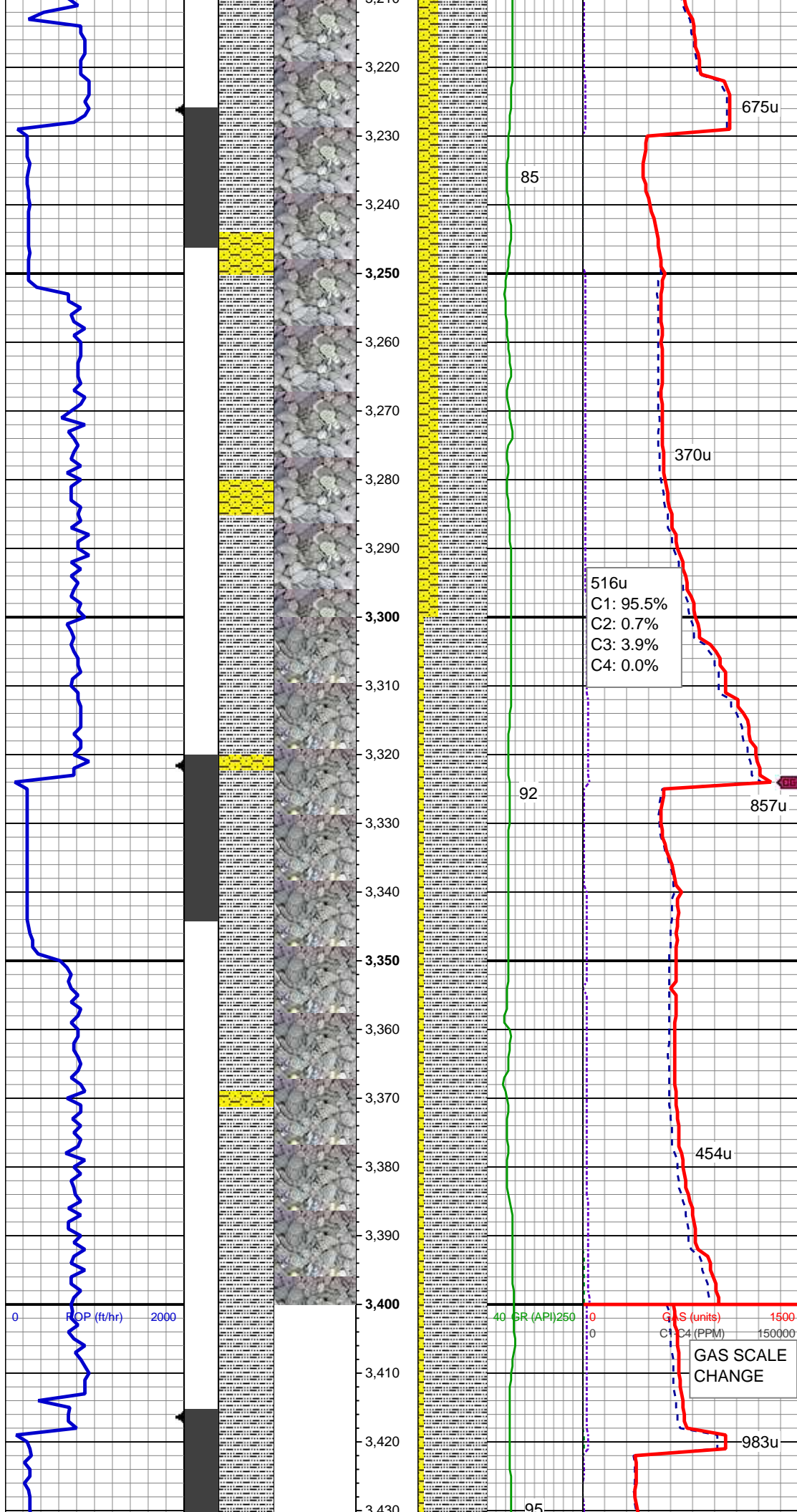
SS: ltgy, wh-clr, sb blkgy-sb ang, hd, fri,  
arg mtx, calc, scat glau  
SHY SS: ltgy-gy, sb ang-sb rd, occ w rd,  
mod frm, v f gr, mod srt, p por, arg cmt  
SLTY SH: medgy-dk gy, sb rd-sb plty, v  
sft, slty tex, arg cmt, calc

MD: 3,071'  
TVD: 3,059.61'  
Inclination: 8.8 °  
Azimuth: 221.6 °  
VS: -98.18'

SS: ltgy, wh-clr, sb blkgy-sb ang, hd, fri,  
arg mtx, calc, scat glau  
SLTY SH: medgy-dk gy, sb rd-sb plty, v  
sft, slty tex, arg cmt  
SHY SS: ltgy-gy, sb ang-sb rd, occ w rd,  
mod frm, v f gr, mod srt, p por, arg cmt,  
calc

MD: 3,166'  
TVD: 3,153.6'  
Inclination: 7.9 °  
Azimuth: 217.6 °  
VS: -106.54'





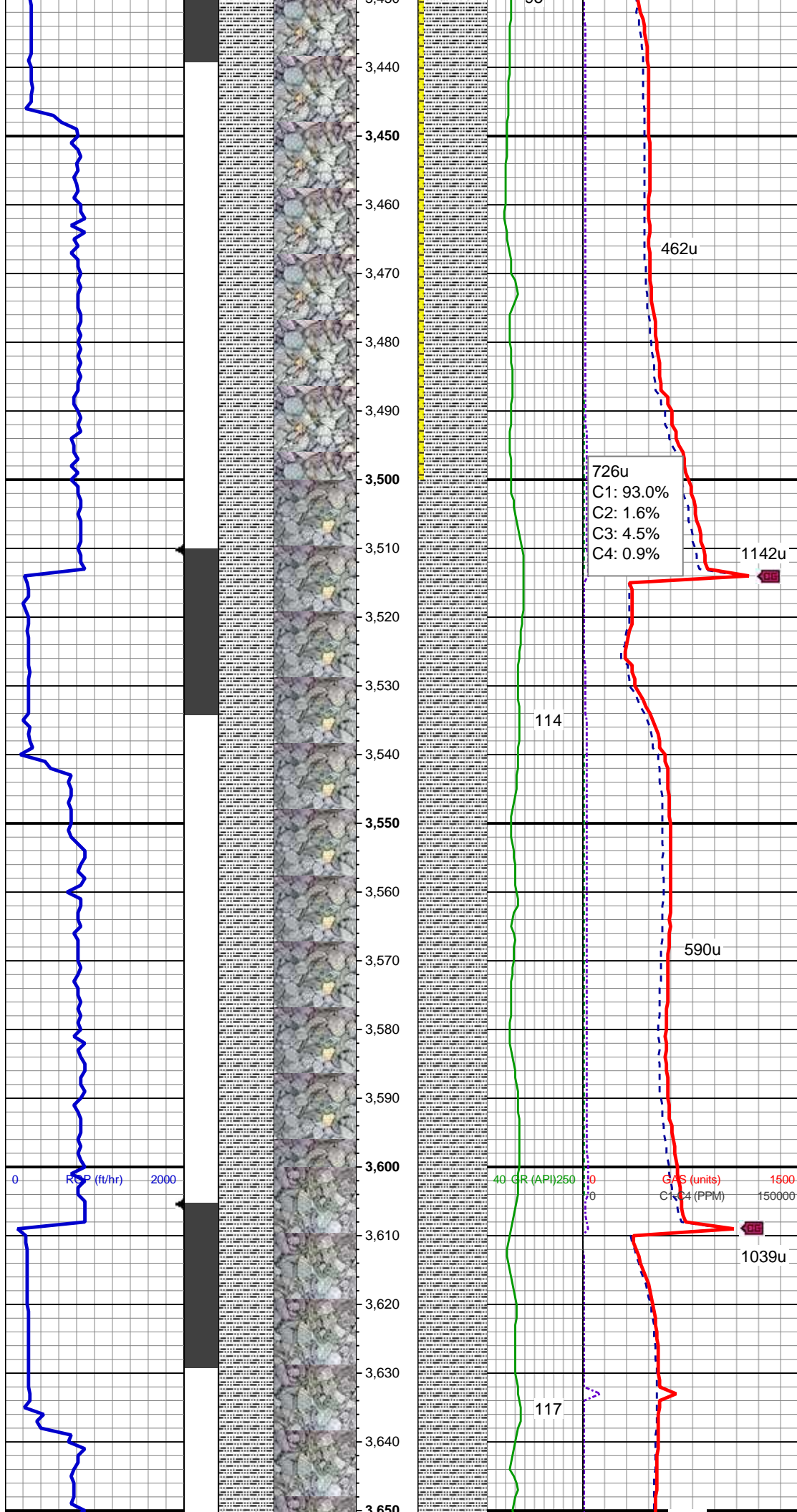
SLTY SH: medgy-dk gy, sb rd-sb plty, v sft, slty tex, arg cmt  
SHY SS: ltgy-gy, sb ang-sb rd, occ w rd, mod frm, v f gr, mod srt, p por, arg cmt, sl calc

MD: 3,260'  
TVD: 3,246.73'  
Inclination: 7.7 °  
Azimuth: 216.7 °  
VS: -113.8'

WT IN 8.60/ OUT 8.60  
VIS IN 28/ OUT 28

SLTY SH: medgy-dk gy, sb rd-sb plty, v sft, slty tex, arg cmt  
SHY SS: ltgy-gy, sb ang-sb rd, occ w rd, mod frm, v f gr, mod srt, p por, arg cmt, sl calc

MD: 3,355'  
TVD: 3,340.85'  
Inclination: 7.9 °  
Azimuth: 221.1 °  
VS: -121.47'



MD: 3,450'  
TVD: 3,434.97'  
Inclination: 7.7 °  
Azimuth: 215.1 °  
VS: -128.98'

SLTY SH: medgy-dk gy, sb rd-sb plty, v sft, slty tex, arg cmt  
SHY SS: ltgy-gy, sb ang-sb rd, occ w rd, mod frm, v f gr, mod srt, p por, arg cmt, sl calc

726u  
C1: 93.0%  
C2: 1.6%  
C3: 4.5%  
C4: 0.9%

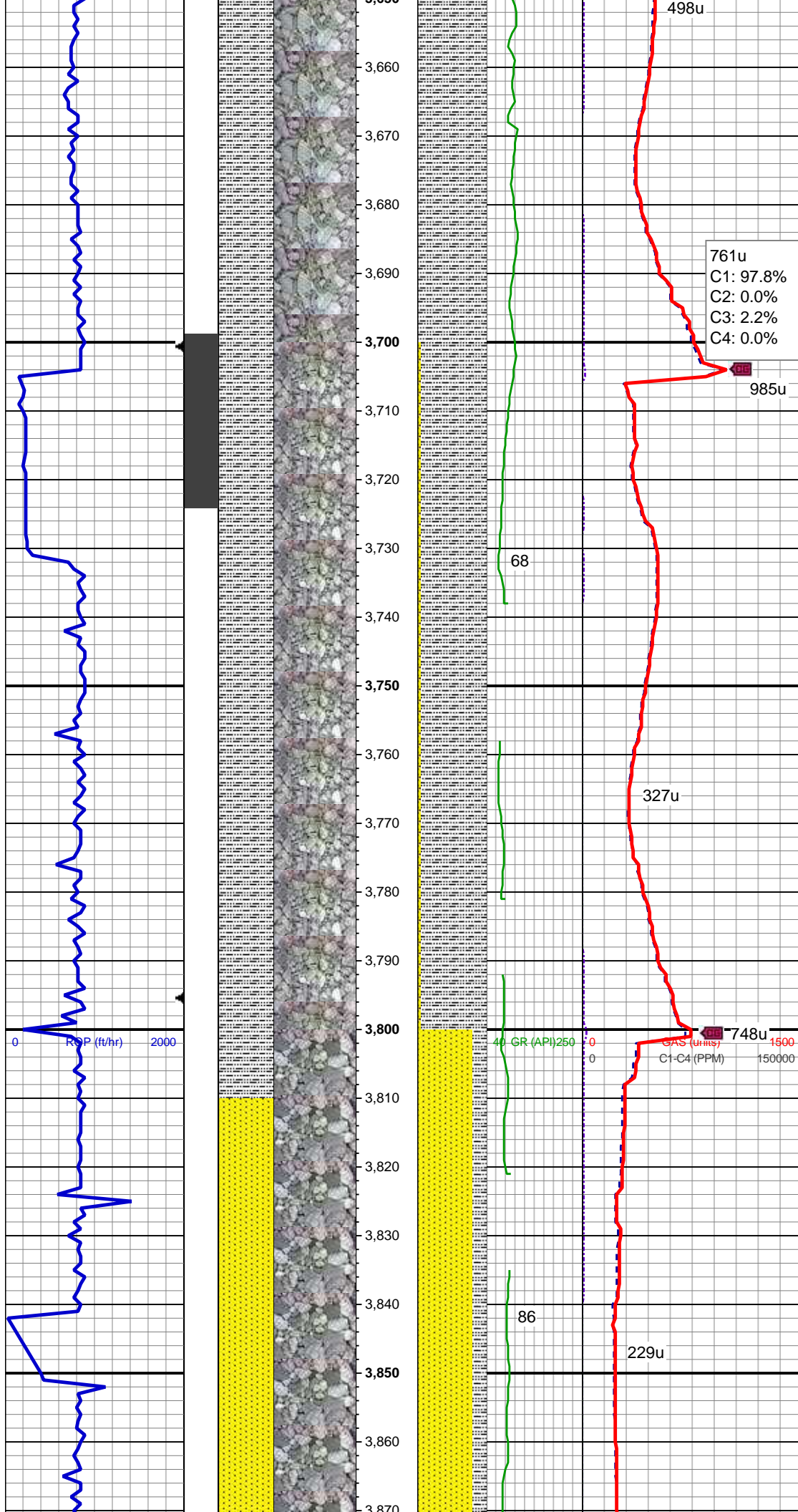
MD: 3,529'  
TVD: 3,529.18'  
Inclination: 7.1 °  
Azimuth: 218.3 °  
VS: -135.86'

SLTY SH: medgy-dk gy, sb rd-sb plty, v sft, slty tex, arg cmt, sl calc

MD: 3,639'  
TVD: 3,622.45'  
Inclination: 7.2 °  
Azimuth: 218.1 °  
VS: -142.69'

SLTY SH: medgy-dk gy, sb rd-sb plty, v





sft, slty tex, arg cmt, sl calc

WT IN 8.90/ OUT 8.90  
VIS IN 33/ OUT 33

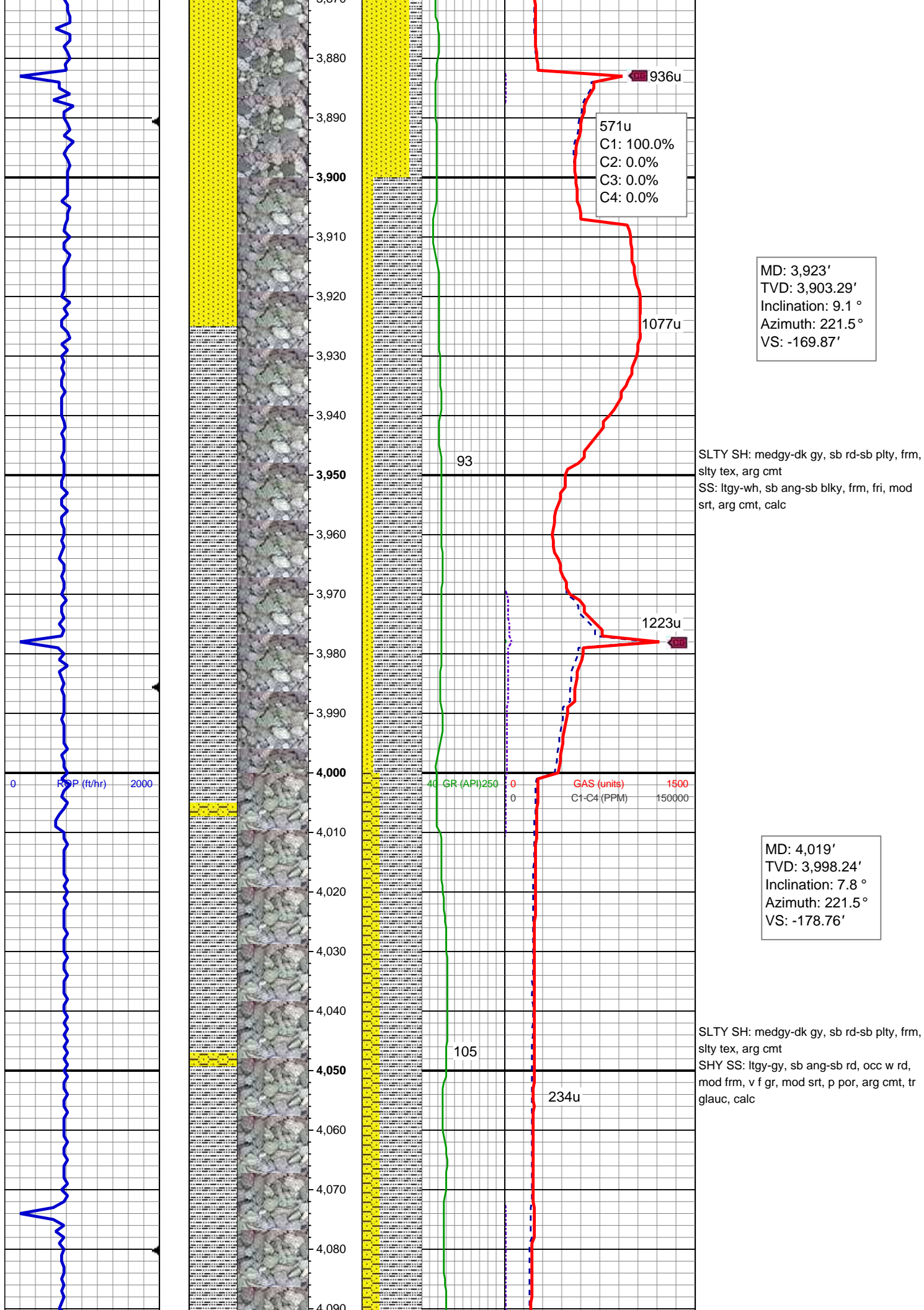
MD: 3,734'  
TVD: 3,716.56'  
Inclination: 8.5 °  
Azimuth: 225 °  
VS: -150.92'

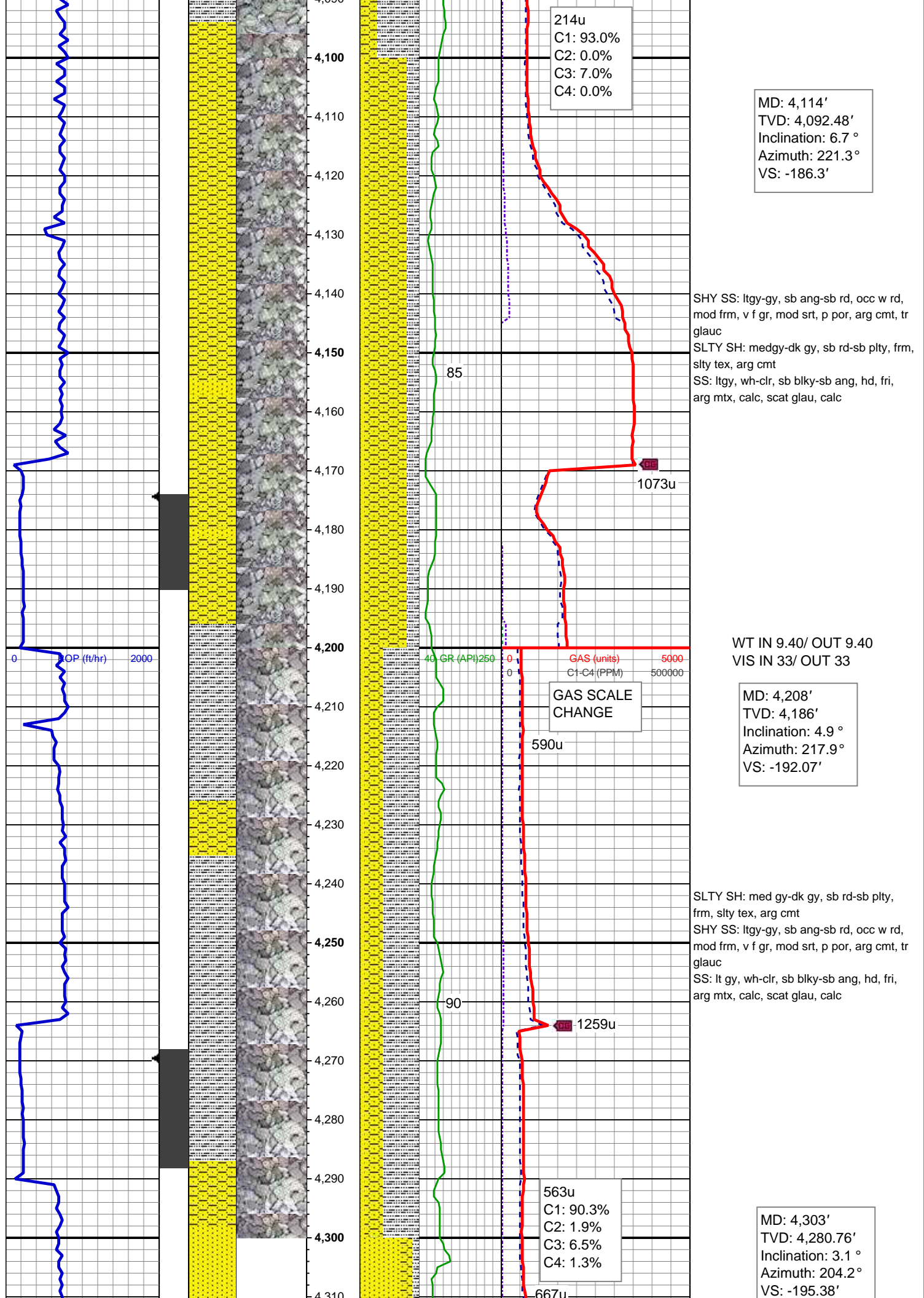
SLTY SH: medgy-dk gy, sb rd-sb plty, v  
sft, c gr, slty tex, arg cmt  
SHY SS: ltgy-gy, sb ang-sb rd, occ w rd,  
mod frm, v f gr, mod srt, p por, arg cmt, sl  
calc

MD: 3,829'  
TVD: 3,810.46'  
Inclination: 9 °  
Azimuth: 222.5 °  
VS: -160.45'

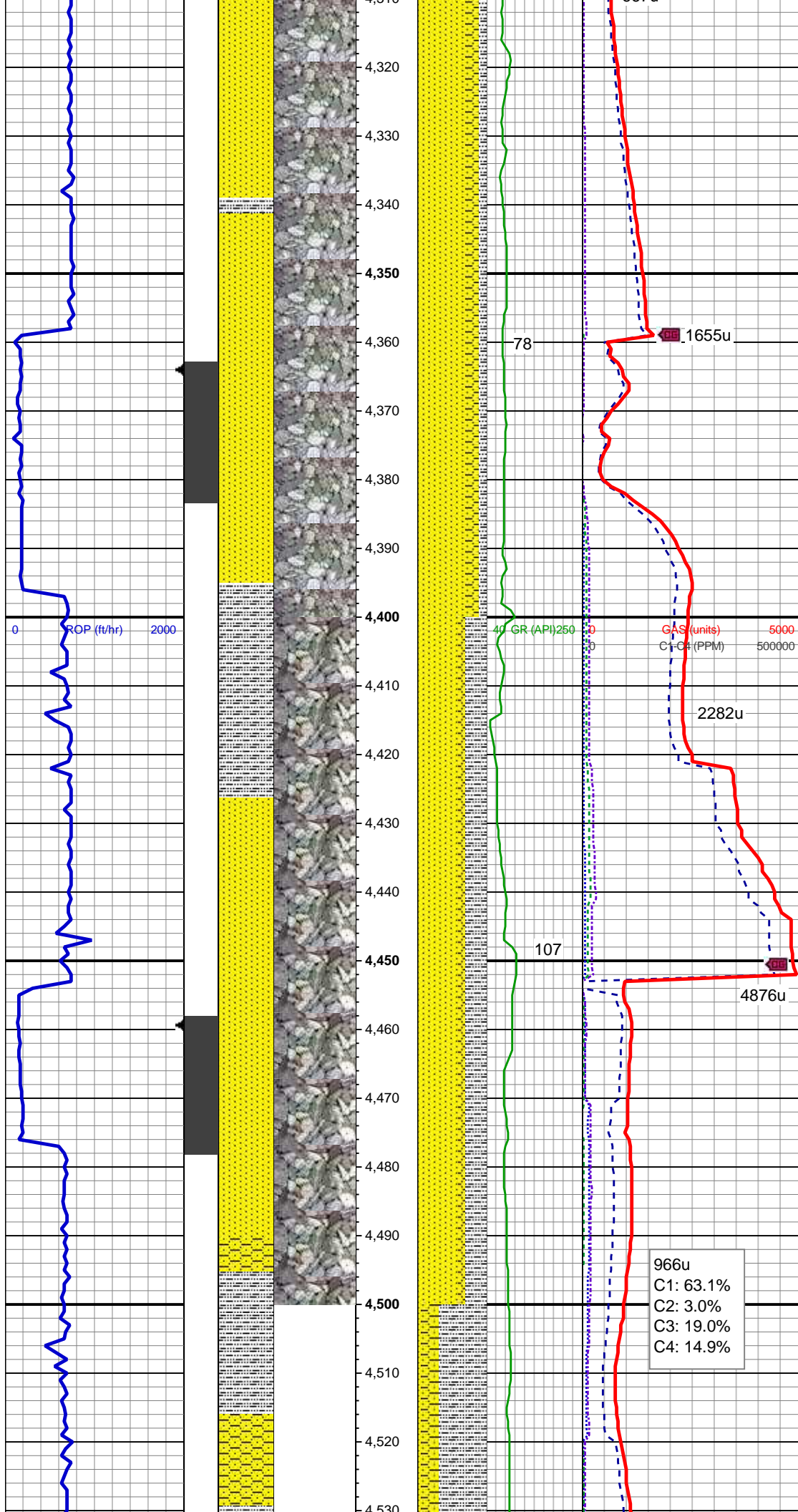
SS: ltgy-wh, sb ang-sb blk, frm, fri, mod  
srt, arg cmt  
SLTY SH: medgy-dk gy, sb rd-sb plty, v  
sft, slty tex, arg cmt, calc











SS: ltgy, wh-clr, sb blkly-sb ang, hd, fri,  
arg mtx, calc, scat glau,  
SHY SS: ltgy-gy, sb ang-sb rd, occ w rd,  
mod frm, v f gr, mod srt, p por, arg cmt, tr  
glau  
SLTY SH: med gy-dk gy, sb rd-sb plty,  
frm, slty tex, arg cmt, calc

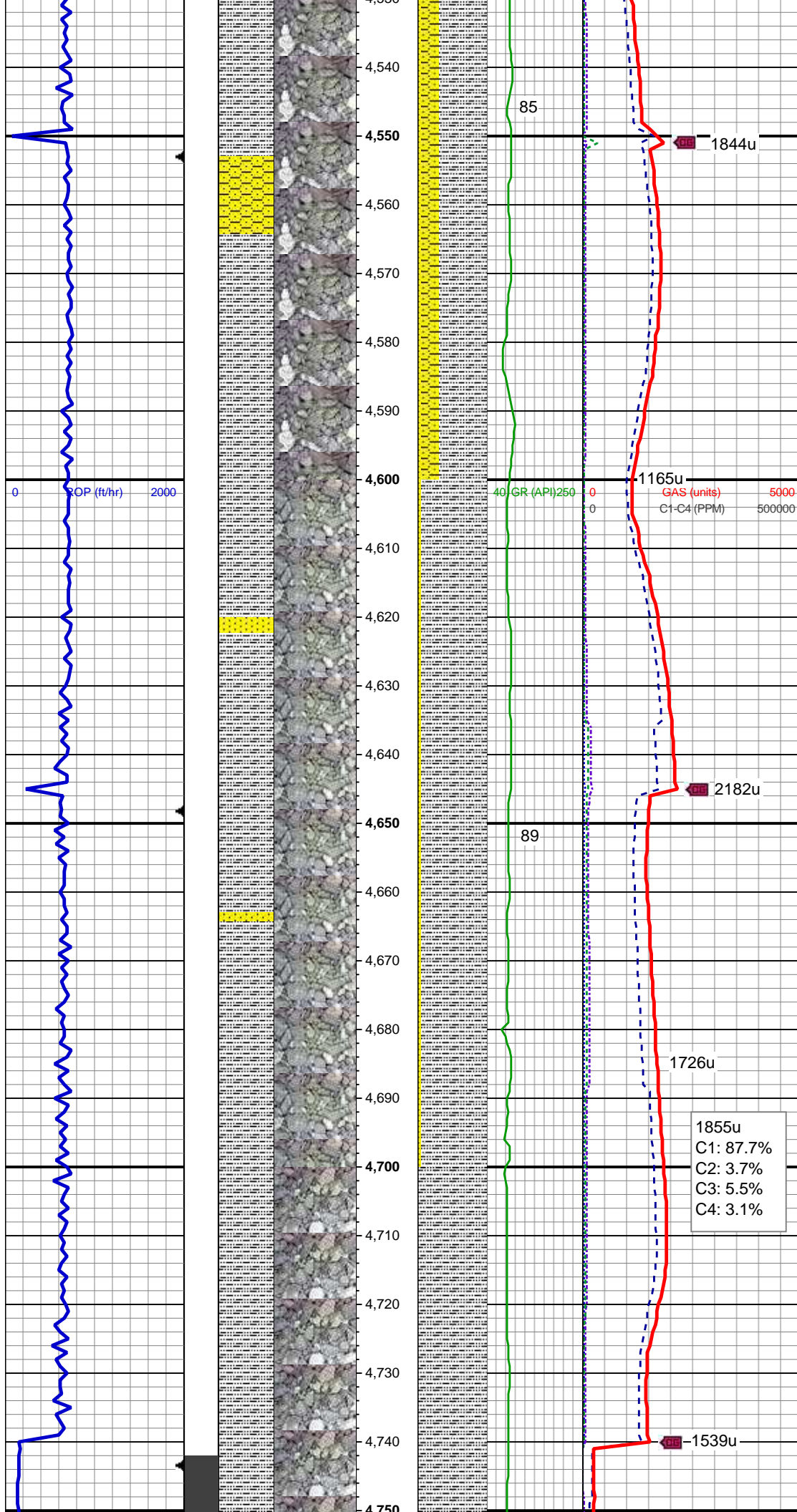
MD: 4,398'  
TVD: 4,375.69'  
Inclination: 1.1 °  
Azimuth: 201.6 °  
VS: -196.63'

SS: ltgy, wh-clr, sb blkly-sb ang, hd, fri,  
arg mtx, calc, scat glau  
SHY SS: ltgy-gy, sb ang-sb rd, occ w rd,  
mod frm, v f gr, mod srt, p por, arg cmt, tr  
glau  
SLTY SH: med gy-dk gy, sb rd-sb plty,  
frm, slty tex, arg cmt, calc

MD: 4,493'  
TVD: 4,470.69'  
Inclination: 0.6 °  
Azimuth: 68.9 °  
VS: -196.47'

WT IN 9.50/ OUT 9.50  
VIS IN 35/ OUT 35





SLTY SH: med gy-dk gy, sb rd-sb plty,  
mod frm, slty tex, arg cmt  
SHY SS: ltgy-gy, sb ang-sb rd, occ w rd,  
mod frm, v f gr, mod srt, p por, arg cmt, tr  
glau  
SS: ltgy, wh-clr, sb blkgy-sb ang, hd, fri,  
arg mtx, calc, scat glau

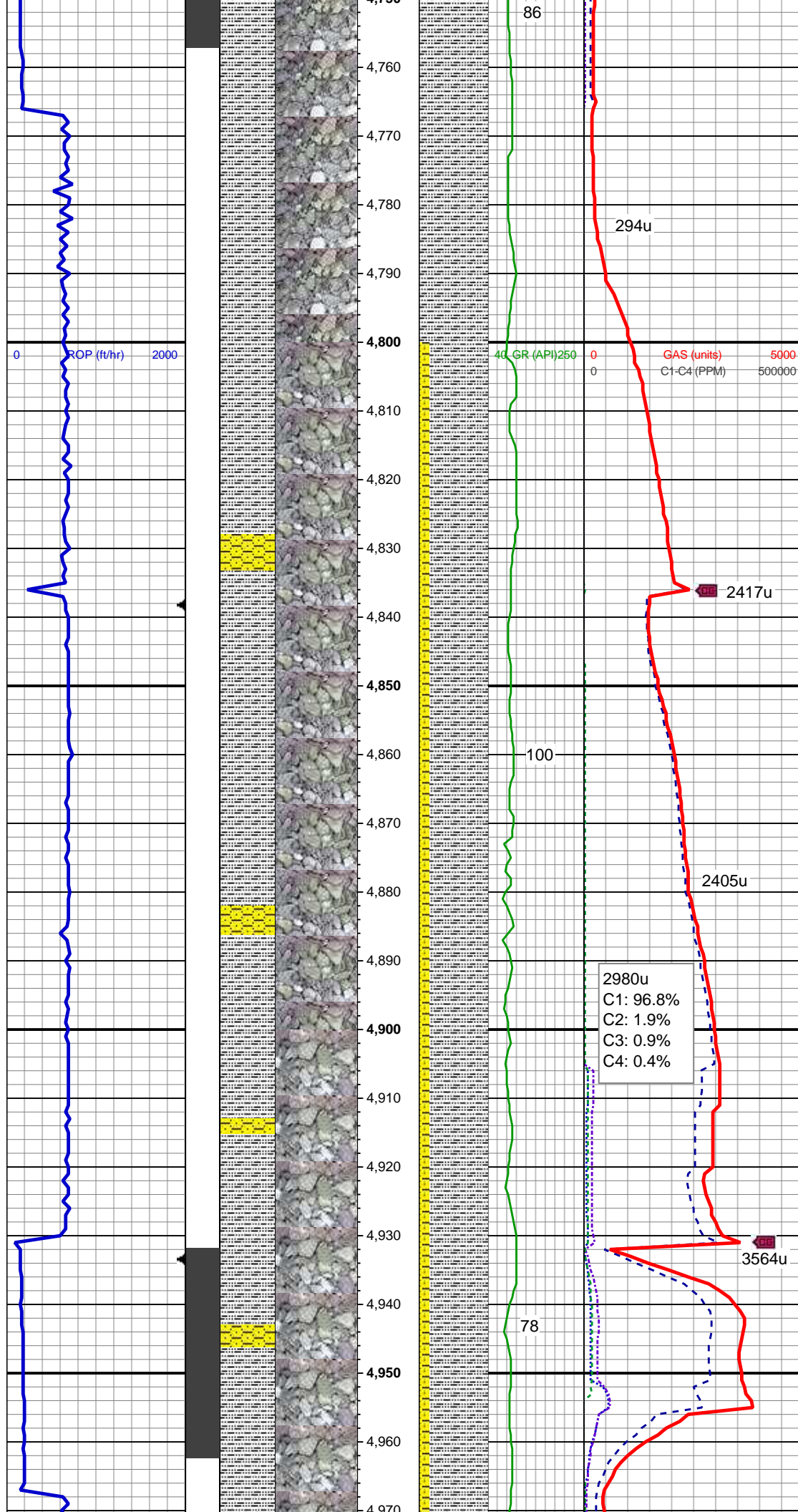
MD: 4,588'  
TVD: 4,565.68'  
Inclination: 1.2 °  
Azimuth: 59.6°  
VS: -195.18'

SLTY SH: med gy-dk gy, sb rd-sb plty,  
mod frm, slty tex, arg cmt  
SS: ltgy, wh-clr, sb blkgy-sb ang, hd, fri,  
arg mtx, calc, tr glau, sl calc

MD: 4,682'  
TVD: 4,659.64'  
Inclination: 1.8 °  
Azimuth: 53.8°  
VS: -193.2'

1855u  
C1: 87.7%  
C2: 3.7%  
C3: 5.5%  
C4: 3.1%

SLTY SH: med gy-dk gy, sb rd-sb plty,



mod frm, c gr, slty tex, arg cmt, sl calc

MD: 4,777'  
TVD: 4,754.61'  
Inclination: 1.1 °  
Azimuth: 87.7 °  
VS: -191.13'

SLTY SH: med gy-dk gy, sb rd-sb plty,  
mod frm, c gr, slty tex, arg cmt  
SHY SS: ltgy-gy, sb ang-sb rd, occ w rd,  
mod frm, f gr, mod srt, p por, arg cmt  
SS: ltgy, wh-clr, sb blkly-sb ang, hd, fri,  
arg mtx, calc, tr glau

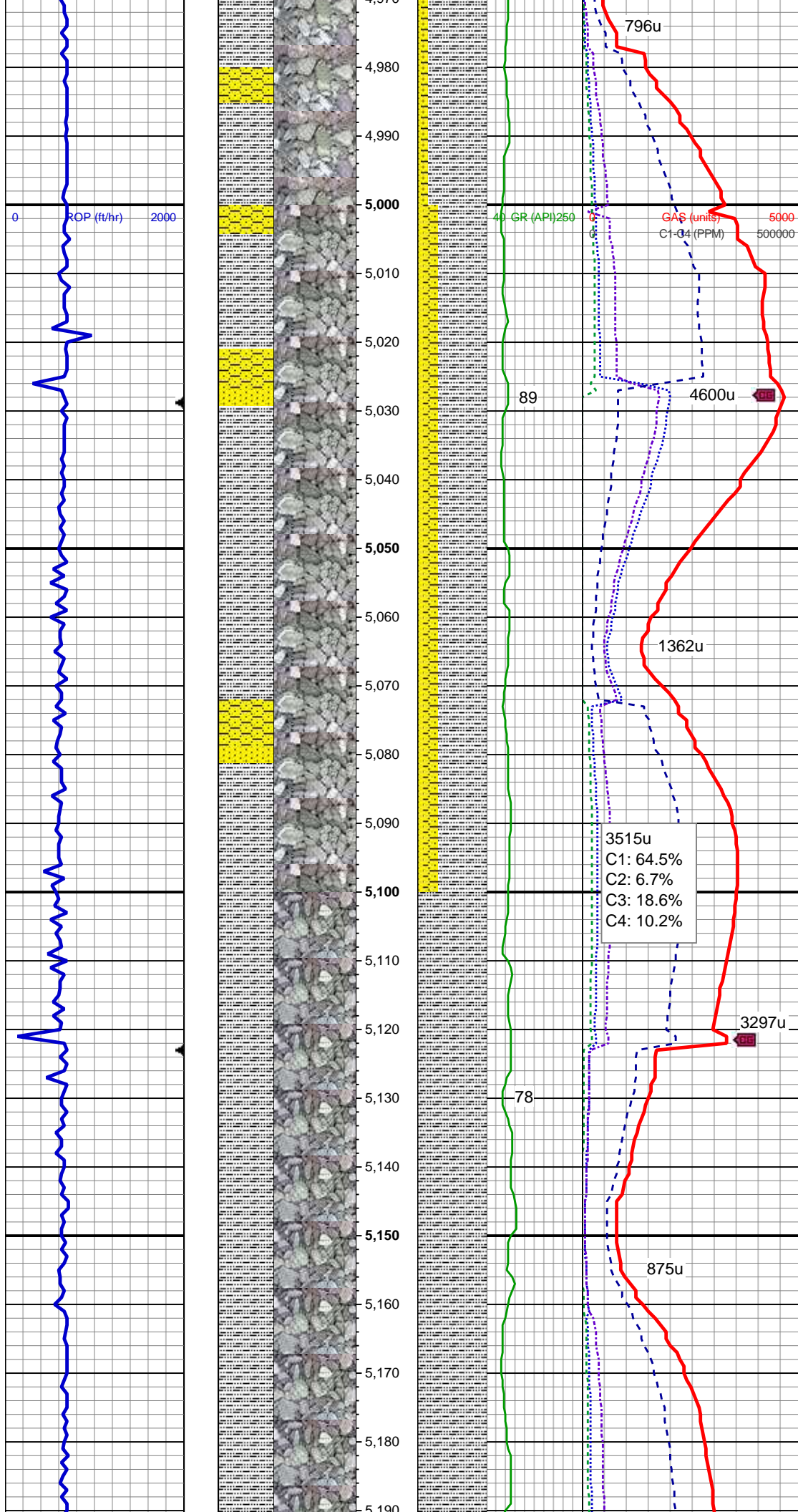
MD: 4,872'  
TVD: 4,849.55'  
Inclination: 2.9 °  
Azimuth: 85.4 °  
VS: -187.83'

WT IN 9.55/ OUT 9.55  
VIS IN 35/ OUT 35

SLTY SH: med gy-dk gy, sb rd-sb plty,  
mod frm, slty tex, arg cmt  
SHY SS: ltgy-gy, sb ang-sb rd, occ w rd,  
mod frm, f gr, mod srt, p por, arg cmt  
SS: ltgy, wh-clr, sb blkly-sb ang, hd, fri,  
arg mtx, calc, tr glau

MD: 4,967'  
TVD: 4,944.51'  
Inclination: 0.4 °  
Azimuth: 124.1 °





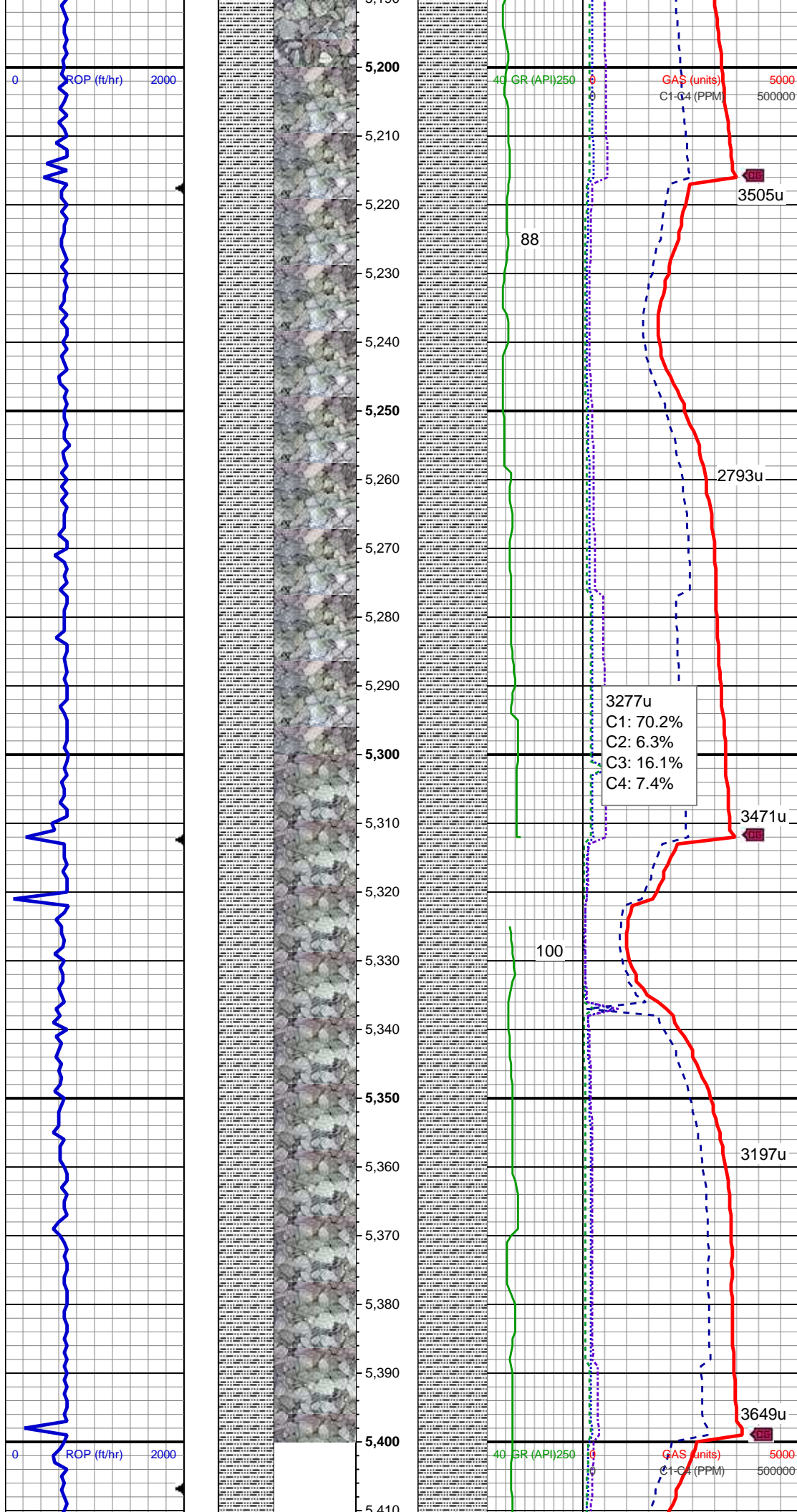
Azimuth: 124.1°  
VS: -185.17'

SLTY SH: med gy-dk gy, sb rd-sb plty,  
mod frm, c gr, slty tex, arg cmt  
SHY SS: ltgy-gy, sb ang-sb rd, occ w rd,  
mod frm, f gr, mod srt, p por, arg cmt  
SS: ltgy, wh-clr, sb blkgy-sb ang, hd, fri,  
arg mtx, calc, tr glau, sl calc

MD: 5,062'  
TVD: 5,039.51'  
Inclination: 0.2 °  
Azimuth: 137.4 °  
VS: -184.77'

SLTY SH: med gy-dk gy, sb plty-plty,  
mod sft, f gr, slty tex, arg cmt

MD: 5,157'  
TVD: 5,134.51'  
Inclination: 0.2 °  
Azimuth: 231.8 °  
VS: -184.77'



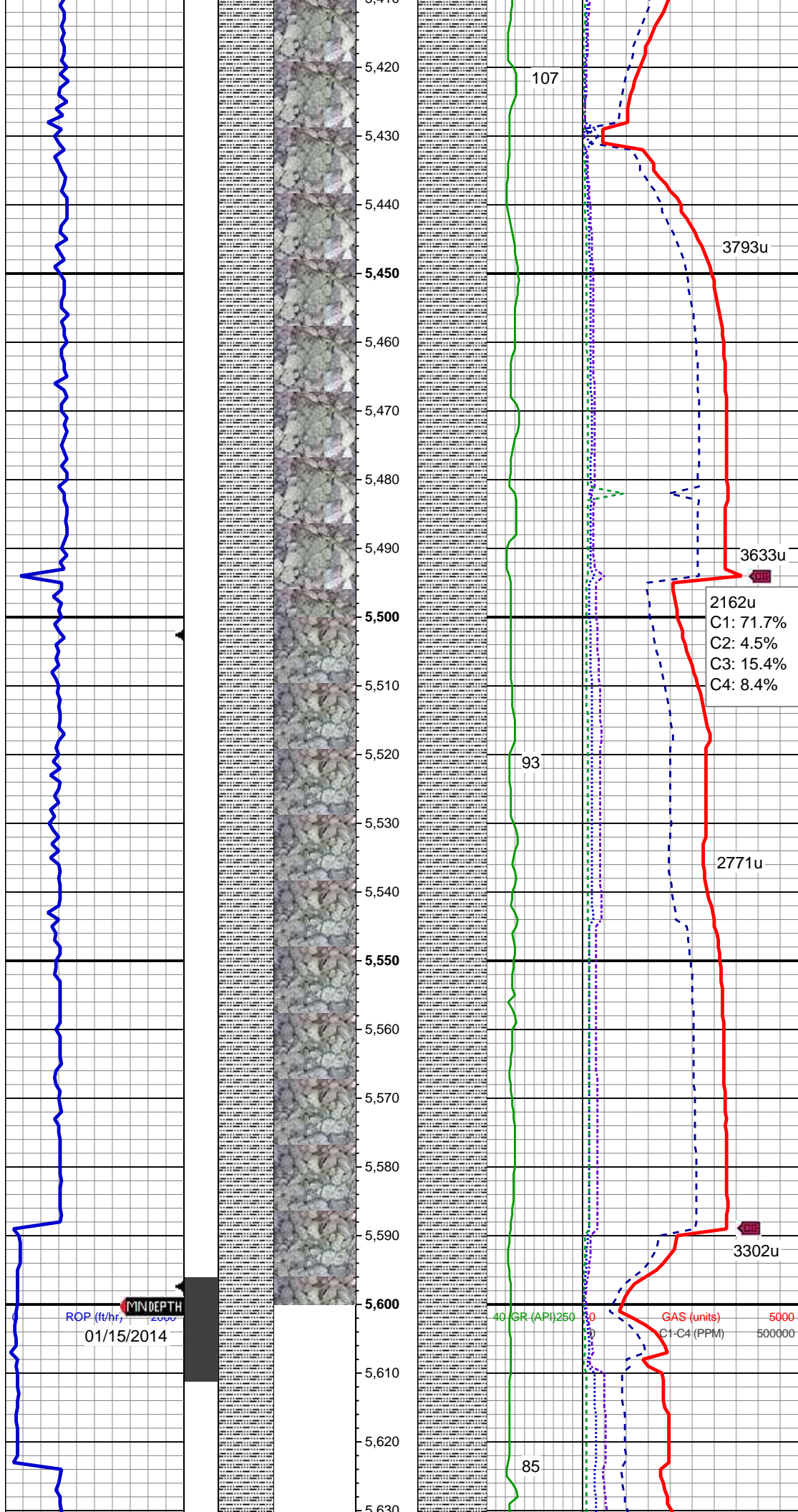
SLTY SH: med gy-dk gy, sb plty-plty,  
mod sft, f gr, slty tex, arg cmt, scat shy ss,  
sl calc

MD: 5,252'  
TVD: 5,229.5'  
Inclination: 0.2 °  
Azimuth: 228.7 °  
VS: -185.02'

MD: 5,347'  
TVD: 5,324.5'  
Inclination: 0.3 °  
Azimuth: 45.9 °  
VS: -184.97'

SLTY SH: med gy-dk gy, sb plty-plty,  
mod sft, f gr, slty tex, sl calc





MD: 5,442'  
TVD: 5,419.5'  
Inclination: 0.5 °  
Azimuth: 349.6 °  
VS: -184.89'

SLTY SH: med gy-dk gy, sb plty-plty,  
mod sft, f gr, slty tex, sl calc

WT IN 9.50/ OUT 9.50  
VIS IN 35/ OUT 35

2162u  
C1: 71.7%  
C2: 4.5%  
C3: 15.4%  
C4: 8.4%

MD: 5,536'  
TVD: 5,513.5'  
Inclination: 0.8 °  
Azimuth: 7.9 °  
VS: -184.92'

SLTY SH: med gy-dk gy, sb plty-plty,  
mod sft, f gr, slty tex, sl calc

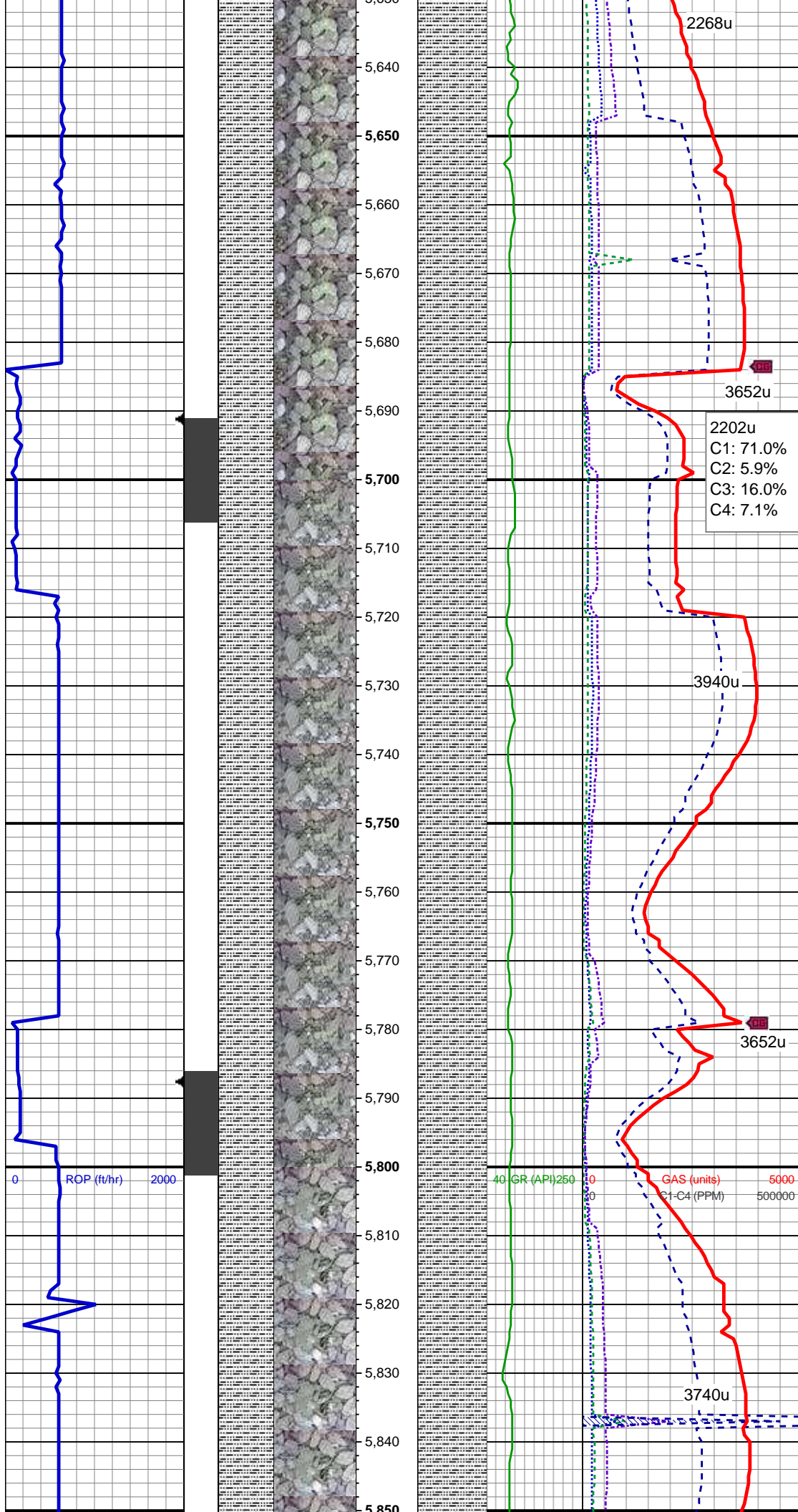
ROP (ft/hr)  
MINDEPTH  
01/15/2014

40 GR (API) 250

GAS (units)  
C1-C4 (PPM)

5000  
500000

MD: 5,631'  
TVD: 5,608.48'



Inclination: 1.2 °  
Azimuth: 323.8 °  
VS: -185.48'

SLTY SH: med gy-dk gy, sb plty-plty,  
mod sft, f gr, slty tex, sl calc

2202u  
C1: 71.0%  
C2: 5.9%  
C3: 16.0%  
C4: 7.1%

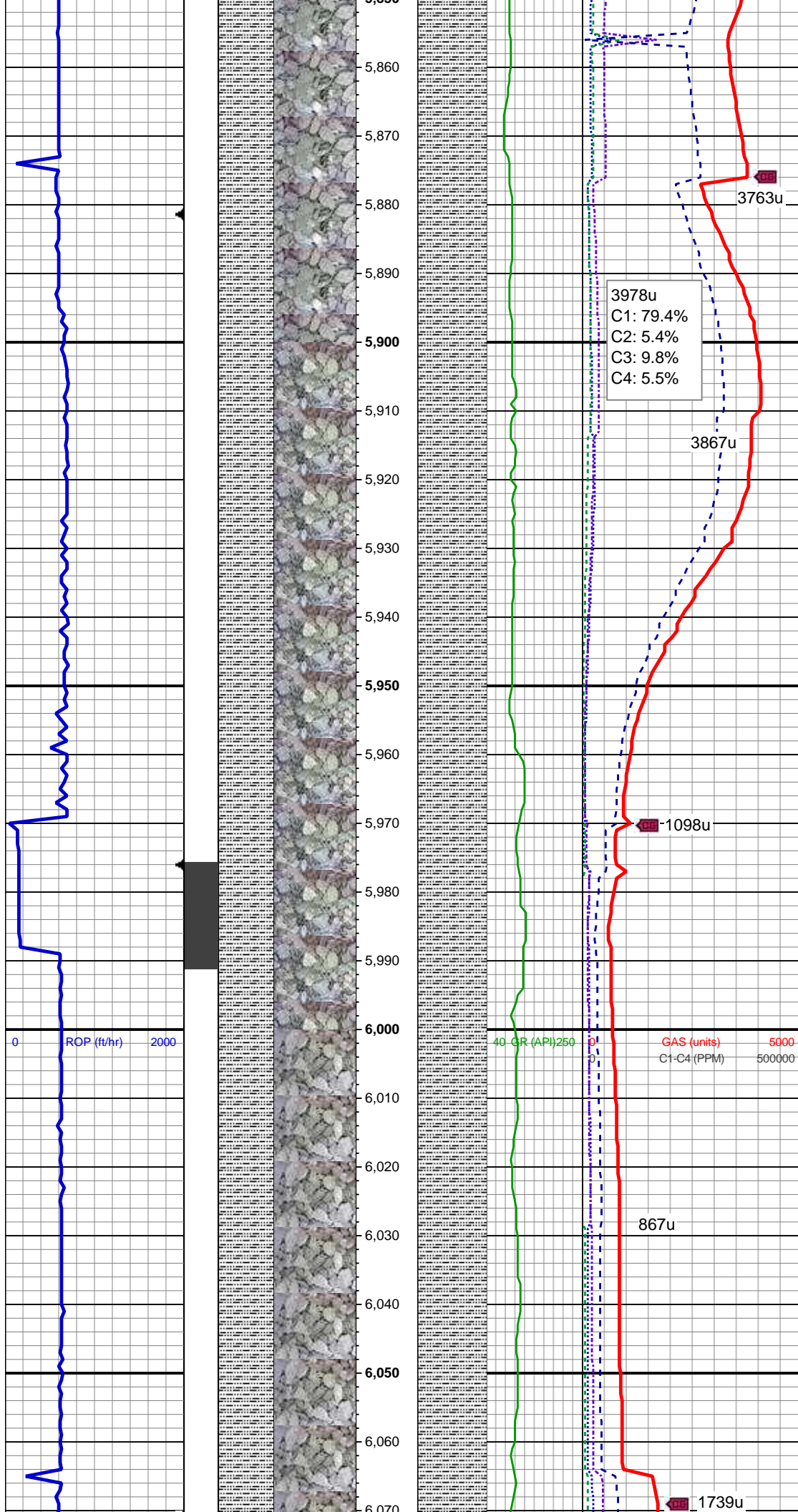
MD: 5,726'  
TVD: 5,703.46'  
Inclination: 1.3 °  
Azimuth: 304.3 °  
VS: -187.01'

SLTY SH: med gy-dk gy, sb plty-plty,  
mod sft, f gr, slty tex, sl calc

MD: 5,821'  
TVD: 5,798.45'  
Inclination: 0.4 °  
Azimuth: 247 °  
VS: -188.23'

SLTY SH: med gy-dk gy, sb plty-plty,





sft-mod frm, f gr, slty tex, v sl calc

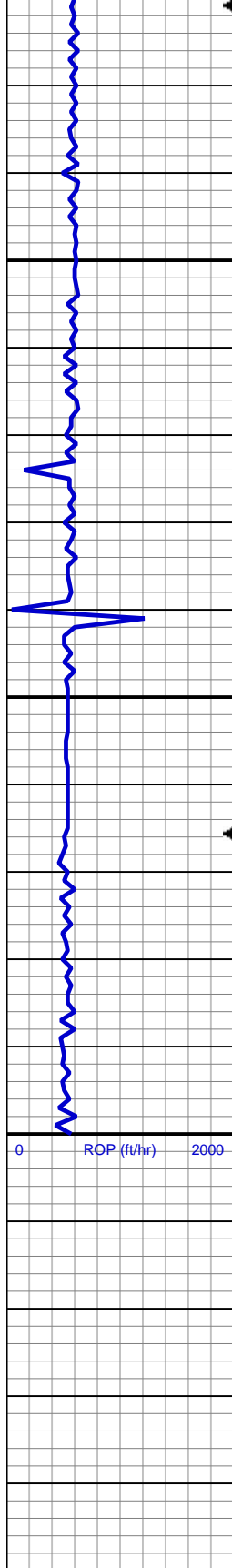
WT IN 9.50/ OUT 9.50  
VIS IN 34/ OUT 34

MD: 5,916'  
TVD: 5,893.44'  
Inclination: 1 °  
Azimuth: 314.8 °  
VS: -189.14'

SLTY SH: med gy-dk gy, sb plty-plty,  
sft-mod frm, f gr, slty tex, v sl calc

MD: 6,011'  
TVD: 5,988.43'  
Inclination: 0.8 °  
Azimuth: 318 °  
VS: -190.22'

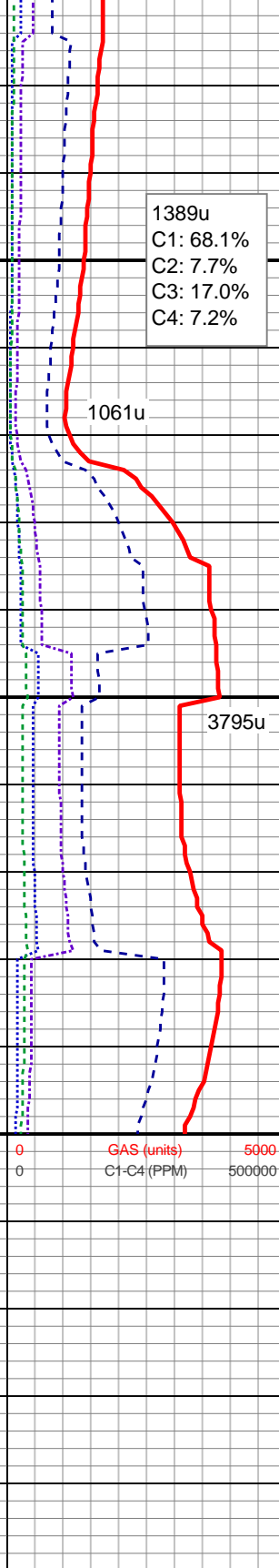
SLTY SH: med gy-dk gy, sb plty-plty,  
sft-mod frm, f gr, slty tex



6,070  
6,080  
6,090  
6,100  
6,110  
6,120  
6,130  
6,140  
6,150  
6,160  
6,170  
6,180  
6,190  
6,200  
6,210  
6,220  
6,230  
6,240  
6,250

40 GR (API) 250  
0  
0

GAS (units)  
C1-C4 (PPM)  
5000  
500000



1389u  
C1: 68.1%  
C2: 7.7%  
C3: 17.0%  
C4: 7.2%

MD: 6,105'  
TVD: 6,082.42'  
Inclination: 1.1 °  
Azimuth: 297.2 °  
VS: -191.49'

SLTY SH: med gy-dk gy, sb plty-plty,  
sft-mod frm, f gr, slty tex, v sl calc

TD @ 6200' MD  
01/15/2014 @ 02:22 AM

LOG CONTINUES ON MPlot  
"NO WORRIES PC G14-63-1HN  
HORZ"