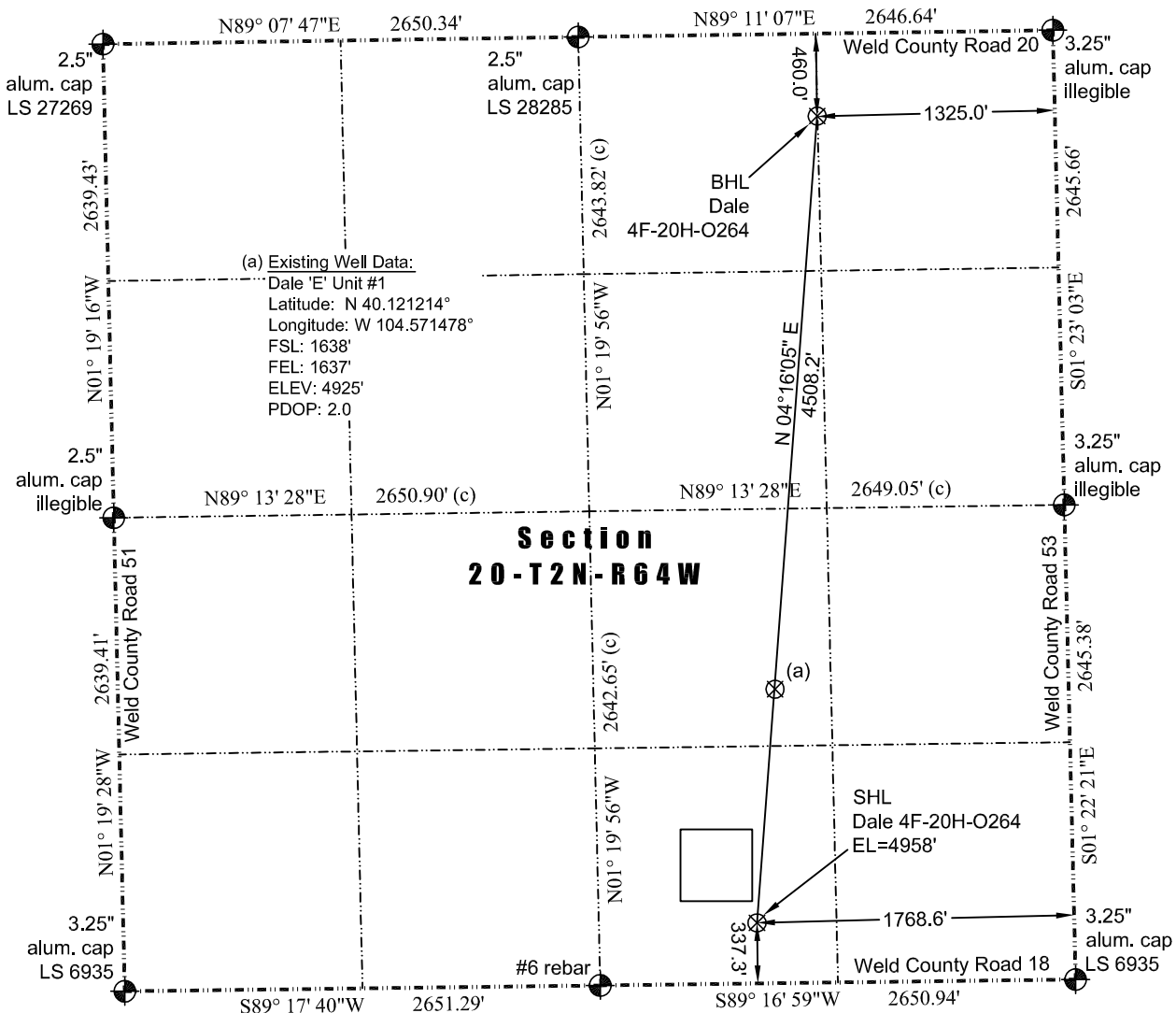


JR Land Surveying, LLC

8114 Northstar Drive
Windsor, Colorado 80528
P. 970-576-4641

WELL LOCATION CERTIFICATE

THIS MAP DOES NOT REPRESENT A BOUNDARY SURVEY



In accordance with a request from Jay Knutson of EnCana Oil & Gas (USA) Inc., JR Land Surveying, LLC has determined the location of the **Dale 4F-20H-O264** well site to be SHL: 337.3' FSL and 1768.6' FEL, (BHL: 460.0' FNL and 1325.0' FEL), as measured at ninety (90) degrees from the section lines of Section 20, Township 2 North, Range 64 West of the 6th Principal Meridian, Weld County Colorado.

Proposed Surface Hole Data:

Latitude: N 40.117641° (BHL: 40.129972°)
Longitude: W 104.571887° (BHL: 104.570519°)
PDOP: 1.2

Nearest:

Building: 498' southwest
Building Unit: 498' southwest
Public Road: 319' south
Property Line: 337' south
Existing Well: Dale 'E' Unit #1; 1306' northeast

Above Ground Utility: 305' south
Railroad: 2,961' south
Well Window: SHL is 124' outside
High Occupancy Building Unit: +5,280'

Notes:

- 1) Bearings and distances based on NAD 83 Colorado North State Plane Coordinate, using RTK GPS observations taken 3/14/14 by operator Chris Bettencourt
- 2) Conversion factor to ground (1.0002793972).
- 3) Elevations based on NAVD 88 GPS heights and Geoid 2003 corrections.
- 4) See Location Drawing for visible improvements within 500 feet of Pad Site.
- 5) The surface use is a cultivated field.

NOTICE: According to Colorado law you must commence any legal action based upon any defect in this W.L.C. within three years after you first discover such defect. In no event may any action based upon any defect in this W.L.C. be commenced more than ten years from this said date of the certification shown hereon.

I hereby certify that this Well Location Certificate was prepared by me or under my direct supervision on 03/20/2014 for and on behalf of EnCana Oil & Gas (USA) Inc. That it is not a Land Survey Plat or an Improvement Survey Plat and that it is not to be relied upon for establishment of fences, buildings, or other future improvement lines.

John Robert McGehee LS#38219
Well: Dale 4F-20H-O264 WLC