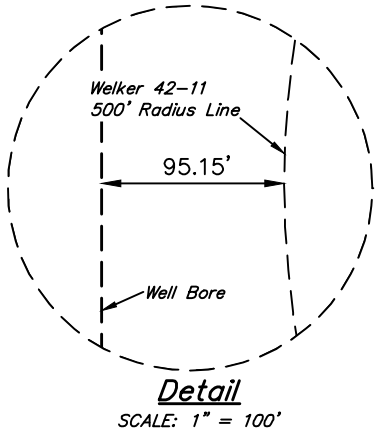
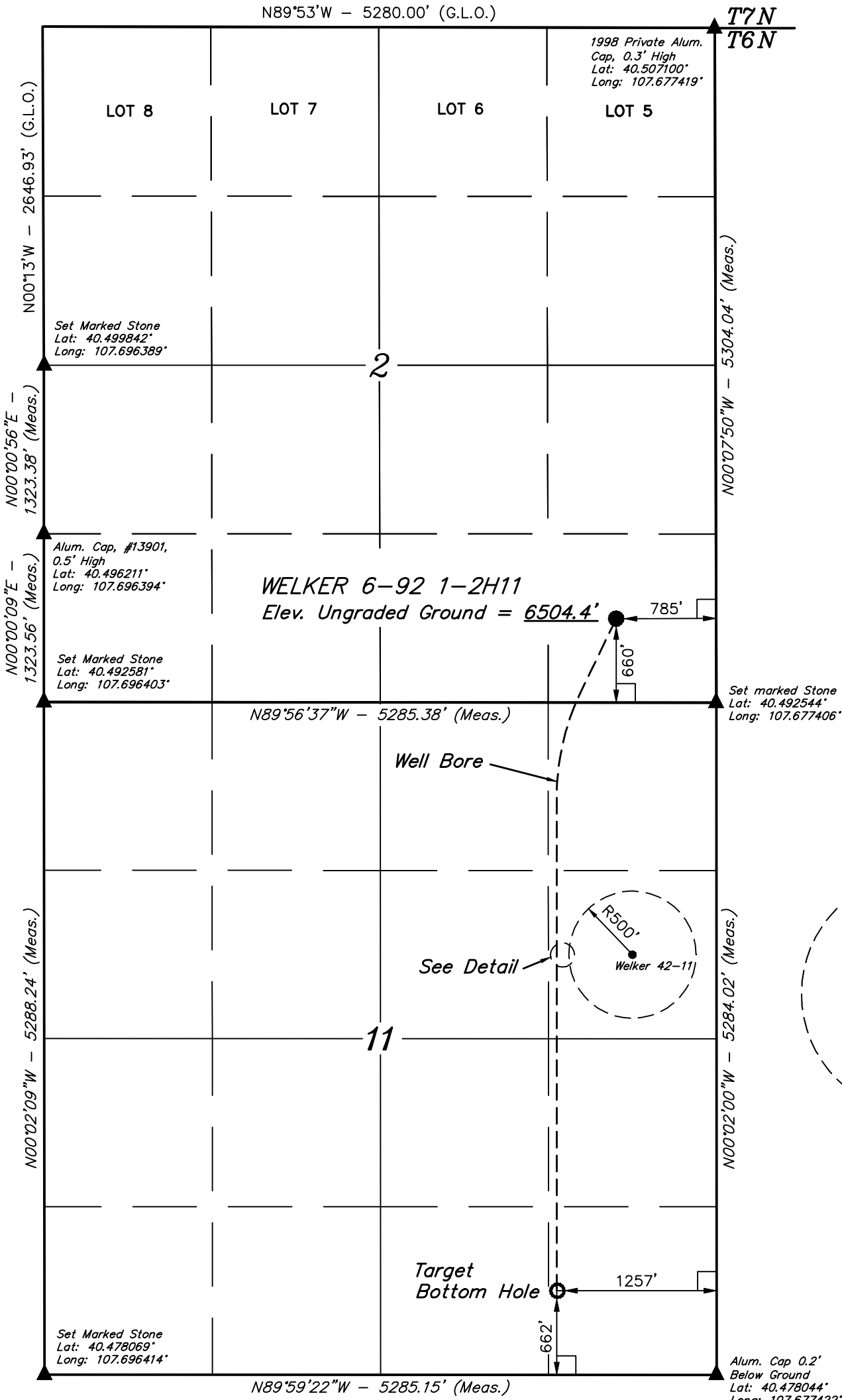


LEGEND:

- └─ = 90° SYMBOL
- = PROPOSED WELLHEAD.
- = TARGET BOTTOM HOLE.
- ▲ = SECTION CORNERS LOCATED.

T6N, R92W, 6th P.M.



BASIS OF BEARINGS

BASIS OF BEARINGS IS A G.P.S. OBSERVATION

BASIS OF ELEVATION

SPOT ELEVATION LOCATED AT THE NORTHEAST CORNER OF SECTION 10, T6N, R93W, 6th P.M., TAKEN FROM THE THE HORSE GULCH, QUADRANGLE, COLORADO, MOFFAT COUNTY, 7.5 MINUTE QUAD. (TOPOGRAPHIC MAP) PUBLISHED BY THE UNITED STATES DEPARTMENT OF THE INTERIOR, GEOLOGICAL SURVEY. SAID ELEVATION IS MARKED AS BEING 6246 FEET.

PDOP = 1.3

CERTIFICATE

THIS IS TO CERTIFY THAT THE ABOVE PLAT WAS PREPARED FROM THE NOTES OF ACTUAL SURVEYS MADE BY ME OR UNDER MY SUPERVISION AND THAT THE SAME ARE TRUE AND CORRECT TO THE BEST OF MY KNOWLEDGE AND BELIEF.

REGISTERED LAND SURVEYOR
REGISTRATION NO. 28285
STATE OF COLORADO

NAD 83 (TARGET BOTTOM HOLE)	NAD 83 (SURFACE LOCATION)
LATITUDE = 40°28'47.53" (40.479869)	LATITUDE = 40°29'39.70" (40.494361)
LONGITUDE = 107°40'54.98" (107.681939)	LONGITUDE = 107°40'48.82" (107.680228)
NAD 27 (TARGET BOTTOM HOLE)	NAD 27 (SURFACE LOCATION)
LATITUDE = 40°28'47.63" (40.479897)	LATITUDE = 40°29'39.81" (40.494392)
LONGITUDE = 107°40'52.73" (107.681314)	LONGITUDE = 107°40'46.57" (107.679603)
STATE PLANE NAD 83	STATE PLANE NAD 83
N: 1425123.65 E: 2393084.85	N: 1430390.31 E: 2393690.30
STATE PLANE NAD 27	STATE PLANE NAD 27
N: 425122.59 E: 1393242.74	N: 430389.24 E: 13938048.19

SOUTHWESTERN ENERGY PRODUCTION COMPANY

WELKER 6-92 1-2H11
SE 1/4 SE 1/4, SECTION 2, T6N, R92W, 6th P.M.
MOFFAT COUNTY, COLORADO

SURVEYED BY: GLENN McELROY, C.A. DRAWN BY: M.D.
DATE: 03-24-14 SCALE: 1"=1000' DATE: 05-08-14 REV.: 05-14-14

WELL LOCATION PLAT



UELS, LLC
Corporate Office * 85 South 200 East
Vernal, UT 84078 * (435) 789-1017

