

<b>Field Ticket Number:</b> 0901301086	<b>Field Ticket Date:</b> Sunday, April 27, 2014	<b>Planning Order #:</b> NA
<b>Bill To:</b> BILL BARRETT CORPORATION E-BILL, DO NOT MAIL-1099 18TH ST,STE 2300W, DENVER, CO, 80202	<b>Job Name:</b> Squeeze <b>Order Type:</b> ZOH <b>Well Name:</b> A&N Farms #12-9 <b>Company Code:</b> 1100 <b>Customer PO No.:</b> NA <b>Shipping Point:</b> FORT LUPTON Shipping Point <b>Sales Office:</b> ROCKY MOUNTAINS BD <b>Well Type:</b> GAS <b>Well Category:</b> Development	
<b>Ship To:</b> BONANZA A&N FARMS 12-9, WELD, LUCERNE, CO		

Material	Description	QTY	UOM	Unit Amount	Gross Amount	Discount	Net Amount
7526	CMT SQUEEZE PERFORATIONS BOM Cement Services & Equipment	1	JOB	0.00	0.00		0.00
16097	SQUEEZE PUMPING CHARGE,ZI FEET/METERS (FT/M) DEPTH	1 FT 6968	EA	10,974.00	10,974.00	5487.00	5,487.00
75234	OPEN HOLE SQUEEZE THRU PERF,ADD HR ZI HR/DAY/WEEK/MTH/YEAR/JOB/RUN HOURS	1 H 4	EA	4,556.00	4,556.00		4,556.00
2	MILEAGE FOR CEMENTING CREW Number of Units	160 1	MI	5.76	921.60	460.80	460.80
1	ZI-MILEAGE FROM NEAREST HES BASE,/UNIT Number of Units	160 1	MI	9.79	1,566.40	783.20	783.20
114	R/A DENSOMETER W/CHART RECORDER,/JOB,ZI NUMBER OF UNITS	1 1	JOB	1,285.00	1,285.00	642.50	642.50
139	ADC (AUTO DENSITY CTRL) SYS, /JOB,ZI NUMBER OF UNITS ENTER FEET/METER/JOB/DAY NUMBER OF JOBS	1 1 JOB 1	JOB	2,275.00	2,275.00	1137.50	1,137.50
130104	PORT. DATA ACQUIS. WO OPTICEM RT W/HES DAYS OR PARTIAL DAY(WHOLE NO.)	1 2	EA	5,098.00	5,098.00	2549.00	2,549.00
14743	TUBING/ROTARY SUB RNTL,2.38",1ST DAY, ZI DAYS OR FRACTION (MIN1) HR/DAY/WEEK/MTH/YEAR/JOB/RUN Cementing Surcharges	1 2 DAY	EA	98.10	98.10	49.05	49.05
86954	ZI FUEL SURCHG-CARS/PICKUPS<1 1/2 TON Number of Units	160 1	MI	0.23	36.80		36.80
86955	ZI FUEL SURCHG-HEAVY TRKS >1 1/2 TON Number of Units	80 1	MI	0.68	54.40		54.40
87605	FUEL SURCHG-CMT & CMT ADDITIVES NUMBER OF TONS	40 12.239	MI	2.82	112.60		112.60
7	ENVIRONMENTAL CHARGE,/JOB,ZI	1	JOB	134.00	134.00		134.00
8	IRON SAFETY INSPECTION SURCHARGE /JOB ZI	1	JOB	83.00	83.00		83.00
372867	Cmt PSL - DOT Vehicle Charge, CMT Cementing Materials	2	EA	241.00	482.00		482.00
76400	MILEAGE,CMT MTLs DEL/RET MIN NUMBER OF TONS	40 12.239	MI	41.00	1,640.03	820.02	820.01
3965	HANDLE&DUMP SVC CHRg, CMT&ADDITIVES,ZI Unit of Measurement NUMBER OF EACH	262 EA 1	CF	5.49	1,438.38	719.19	719.19
452986	CMT, HalCem (TM) system	35	SK	123.39	4,318.54	1384.72	2,933.82
452986	CMT, HalCem (TM) system	35	SK	44.26	1,549.10		1,549.10

<b>Field Ticket Number:</b> 0901301086	<b>Field Ticket Date:</b> Sunday, April 27, 2014	<b>Planning Order #:</b> NA
<b>Bill To:</b> BILL BARRETT CORPORATION E-BILL, DO NOT MAIL-1099 18TH ST,STE 2300W, DENVER, CO, 80202	<b>Job Name:</b> Squeeze <b>Order Type:</b> ZOH <b>Well Name:</b> A&N Farms #12-9 <b>Company Code:</b> 1100 <b>Customer PO No.:</b> NA <b>Shipping Point:</b> FORT LUPTON Shipping Point <b>Sales Office:</b> ROCKY MOUNTAINS BD <b>Well Type:</b> GAS <b>Well Category:</b> Development	
<b>Ship To:</b> BONANZA A&N FARMS 12-9, WELD, LUCERNE, CO		

Material	Description	QTY	UOM	Unit Amount	Gross Amount	Discount	Net Amount
16097	SQUEEZE PUMPING CHARGE,ZI DEPTH FEET/METERS (FT/M)	1 825 FT	EA	7,270.00	7,270.00	3635.00	3,635.00
75234	OPEN HOLE SQUEEZE THRU PERF,ADD HR ZI HOURS HR/DAY/WEEK/MTH/YEAR/JOB/RUN	1 1 H	EA	1,139.00	1,139.00		1,139.00
<b>Totals USD</b>					<b>\$ 45,031.95</b>	<b>\$ 17,667.98</b>	<b>\$ 27,363.97</b>

## Field Ticket Signature

<b>Field Ticket Number:</b> 0901301086	<b>Field Ticket Date:</b> Sunday, April 27, 2014	<b>Planning Order #:</b> NA
<b>Bill To:</b> BILL BARRETT CORPORATION E-BILL, DO NOT MAIL-1099 18TH ST,STE 2300W, DENVER, CO, 80202	<b>Job Name:</b> Squeeze <b>Order Type:</b> ZOH <b>Well Name:</b> A&N Farms #12-9 <b>Company Code:</b> 1100 <b>Customer PO No.:</b> NA <b>Shipping Point:</b> FORT LUPTON Shipping Point <b>Sales Office:</b> ROCKY MOUNTAINS BD <b>Well Type:</b> GAS <b>Well Category:</b> Development	
<b>Ship To:</b> BONANZA A&N FARMS 12-9, WELD, LUCERNE, CO		

THIS OUTPUT DOES NOT INCLUDE TAXES. APPLICABLE SALES TAX WILL BE BILLED ON THE FINAL INVOICE. CUSTOMER HEREBY ACKNOWLEDGES RECEIPT OF THE MATERIALS AND SERVICES DESCRIBED ABOVE, ON ANY PRECEDING PAGES, AND ATTACHED DOCUMENTS.

Gross Amount Total:	\$ 45,031.95
Item Discount Total:	\$ 17,667.98
Net Amount Total:	\$ 27,363.97 USD

Customer Representative Signature: \_\_\_\_\_

Date: \_\_\_\_\_

Customer Representative

Jason Gibbs

Halliburton Representative

Was our HSE performance satisfactory? (Health, Safety, Environment)

☐ Yes ☐ No

Were you satisfied with our equipment?

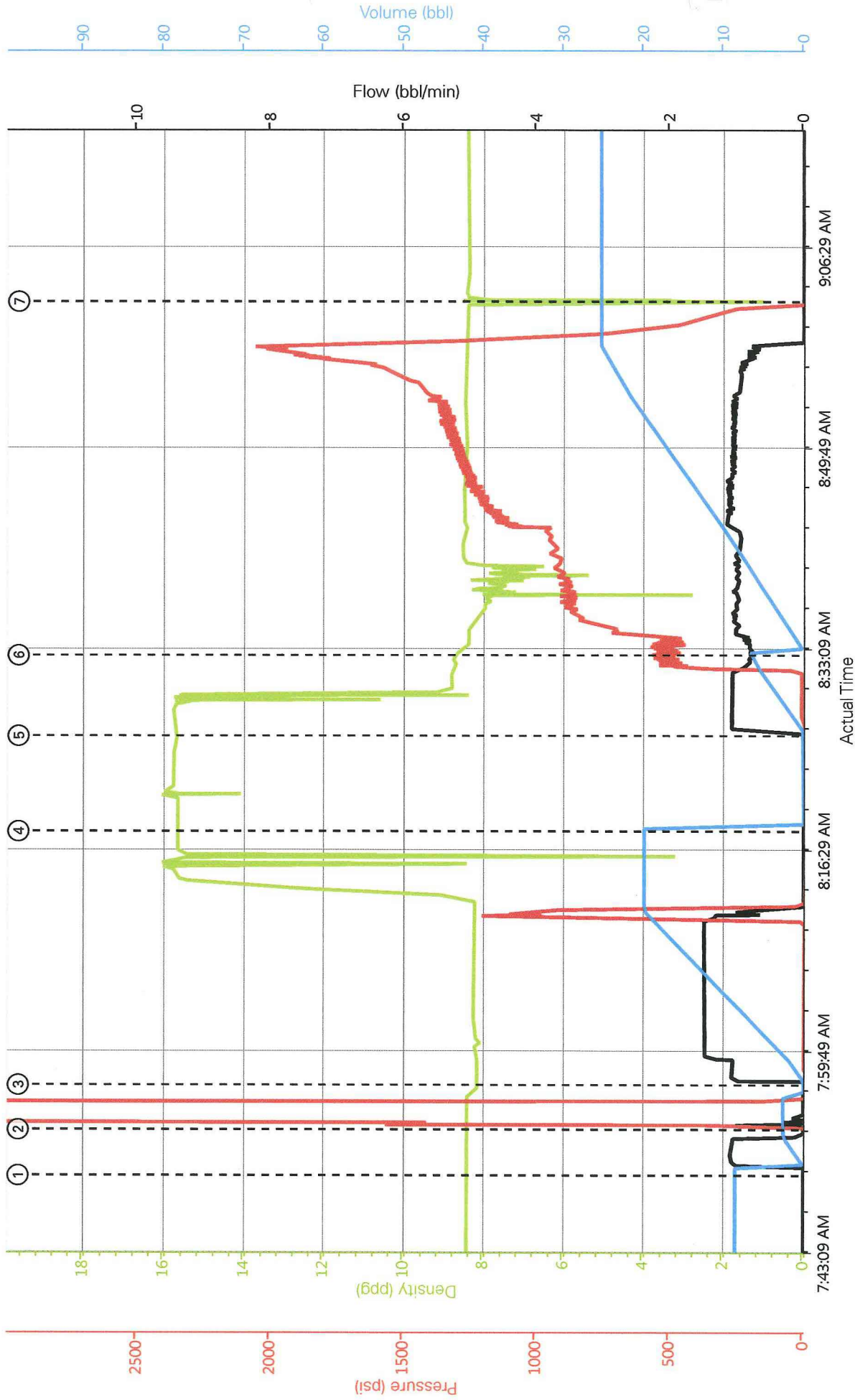
☐ Yes ☐ No

Were you satisfied with our people?

☐ Yes ☐ No

Comments:

# Bill Barrett A&N Farms 12-9



Recirc Density (ppg) Comb Pump Rate (bbl/min) DS Pump Press (psi) Comb Pump Total (bbl)

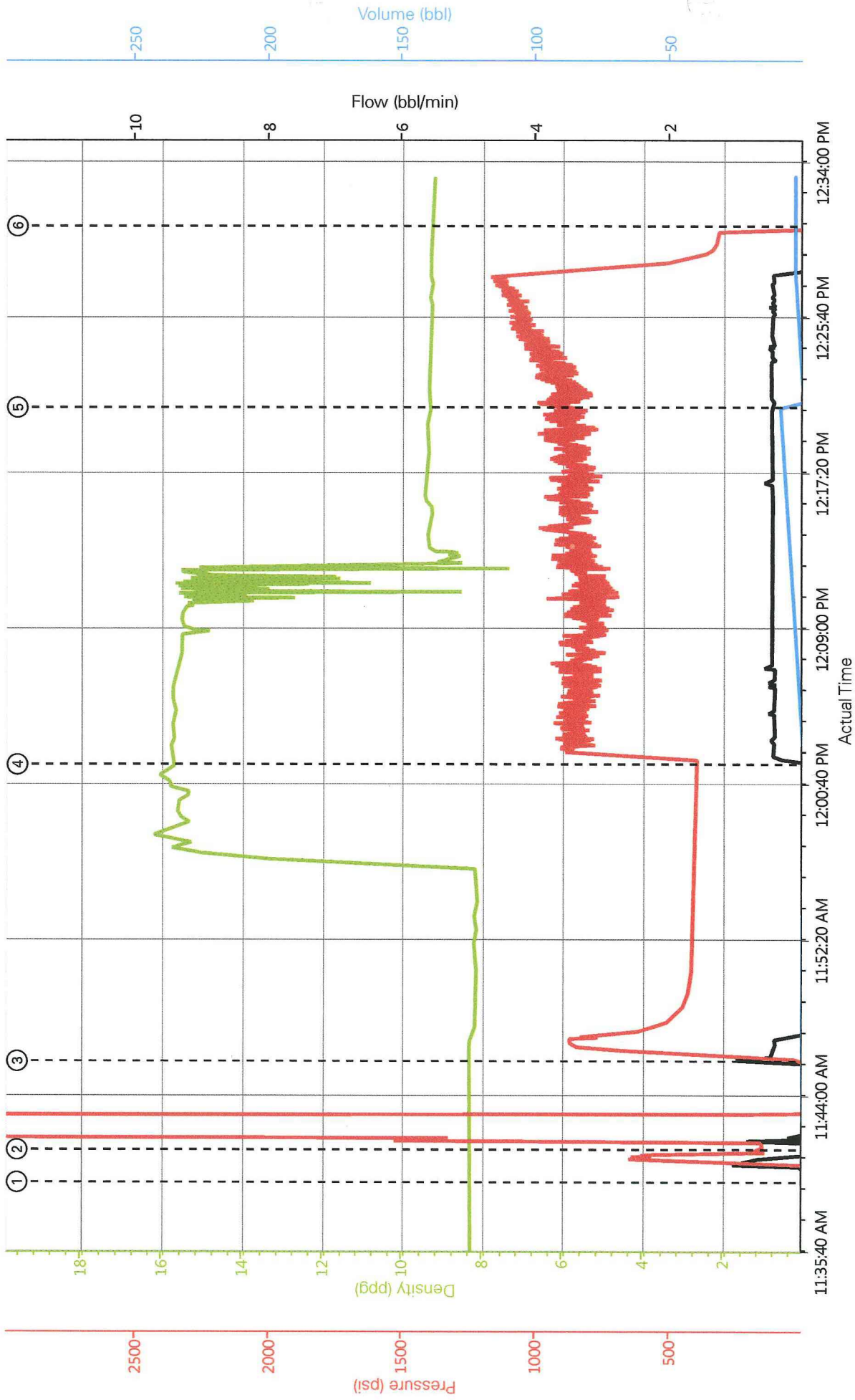
① Start Job 8.45;0;-47.31;8.54 ④ Pump Cement 15.71;0;-12.81;19.9 ⑦ Shutdown 8.38;0;-23.65;25.37

② Test Lines 8.41;0;-47.31;2.53 ⑤ Pump Cement 15.69;0;-9.86;0

③ Pump Spacer 1 8.2;0;-53.22;0 ⑥ Pump Displacement 8.67;0.78;486.89;6.71



Bill Barrett A&N Farms 12-9



Recirc Density (ppg) Comb Pump Rate (bbl/min) DS Pump Press (psi) Comb Pump Total (bbl)

- ① Start Job 8.35;0;-16.76;0
- ② Test Lines 8.36;0;157.7;0.39
- ③ Pump Spacer 1 8.34;0.52;107.43;0.1
- ④ Pump Cement 15.75;0;403.11;0
- ⑤ Pump Displacement 9.33;0.46;931.4;0.04
- ⑥ End Job 9.23;0;-33.51;3.28

# HALLIBURTON

BILL BARRETT CORPORATION E-BILL

A&N Farms 12-9

Case 1

## 1.1 Job Event Log

Type	Seq. No.	Activity	Graph Label	Date	Time	Source	Recirc Density (ppg)	Combined Pump Rate (bbl/min)	Drive-Side Pump Pressure (psi)	Combined Pump Total (bbl)	Comment
Event	1	Start Job	Start Job	4/27/2014	07:49:46	COM4	8.45	0.00	-47.31	8.5	
Event	2	Test Lines	Test Lines	4/27/2014	07:53:34	COM4	8.41	0.00	-47.31	2.5	
Event	3	Pump Spacer 1	Pump Spacer 1	4/27/2014	07:57:16	COM4	8.20	0.00	-53.22	0.0	
Event	4	Pump Cement	Pump Cement	4/27/2014	08:18:17	COM4	15.71	0.00	-12.81	19.9	
Event	5	Pump Cement	Pump Cement	4/27/2014	08:26:12	COM4	15.69	0.00	-9.86	0.0	
Event	6	Pump Displacement	Pump Displacement	4/27/2014	08:32:53	COM4	8.67	0.78	486.89	6.7	
Event	7	Shutdown	Shutdown	4/27/2014	09:02:13	COM4	8.38	0.00	-23.65	25.4	

# HALLBURTON

BILL BARRETT CORPORATION E-BILL  
A&N Farms 12-9 #2  
Case 1

## 1.1 Job Event Log

Type	Seq. No.	Activity	Graph Label	Date	Time	Source	Recirc Density (ppg)	Combined Pump Rate (bbl/min)	Drive-Side Pump Pressure (psi)	Combined Pump Total (bbl)	Comment
Event	1	Start Job	Start Job	4/28/2014	11:39:32	COM4	8.36	0.00	-15.77	0.0	
Event	2	Test Lines	Test Lines	4/28/2014	11:41:17	COM4	8.36	0.00	156.71	0.4	
Event	3	Pump Spacer 1	Pump Spacer 1	4/28/2014	11:46:01	COM4	8.32	0.52	102.50	0.1	
Event	4	Pump Cement	Pump Cement	4/28/2014	12:01:54	COM4	15.74	0.00	403.11	0.0	
Event	5	Pump Displacement	Pump Displacement	4/28/2014	12:21:01	COM4	9.29	0.46	955.06	0.0	
Event	6	End Job	End Job	4/28/2014	12:30:44	COM4	9.20	0.00	-33.51	3.3	



*The Road to Excellence Starts with Safety*

<b>Sold To #:</b> 343492		<b>Ship To #:</b> 2404415		<b>Quote #:</b>		<b>Sales Order #:</b> 0901301086	
<b>Customer:</b> BILL BARRETT CORPORATION E-BILL				<b>Customer Rep:</b>			
<b>Well Name:</b> A&N Farms			<b>Well #:</b> #12-9		<b>API/UWI #:</b>		
<b>Field:</b>		<b>City (SAP):</b> LUCERNE		<b>County/Parish:</b> WELD		<b>State:</b> COLORADO	
<b>Legal Description:</b>							
<b>Contractor:</b>				<b>Rig/Platform Name/Num:</b> Workover			
<b>Job BOM:</b> 7526							
<b>Well Type:</b> GAS							
<b>Sales Person:</b> HALAMERICA\HX46524				<b>Srv Supervisor:</b> Jason Gibbs			

**Job**

<b>Formation Name</b>			
<b>Formation Depth (MD)</b>	<b>Top</b>		<b>Bottom</b>
<b>Form Type</b>			<b>BHST</b>
<b>Job depth MD</b>	6975ft and 825ft		<b>Job Depth TVD</b>
<b>Water Depth</b>			<b>Wk Ht Above Floor</b>
<b>Perforation Depth (MD)</b>	<b>From</b>		<b>To</b>

**Well Data**

Description	New / Used	Size in	ID in	Weight lbm/ft	Thread	Grade	Top MD ft	Bottom MD ft	Top TVD ft	Bottom TVD ft
Tubing		2.375	1.995	4.7			0	6968		0
Casing		4.5	4	11.6			0	6975		
Casing		7	6.276	26		HCP110	0	7265		
Open Hole Section			8.75				1340	5265		
Open Hole Section			8.75				5265	7265		

**Tools and Accessories**

Type	Size in	Qty	Make	Depth ft	Type	Size in	Qty	Make
Guide Shoe				7265	Top Plug			HES
Float Shoe					Bottom Plug			HES
Float Collar					SSR plug set			HES
Insert Float					Plug Container			HES
Stage Tool					Centralizers			HES

**Miscellaneous Materials**

<b>Gelling Agt</b>		<b>Conc</b>		<b>Surfactant</b>		<b>Conc</b>		<b>Acid Type</b>		<b>Qty</b>		<b>Conc</b>	
<b>Treatment Fld</b>		<b>Conc</b>		<b>Inhibitor</b>		<b>Conc</b>		<b>Sand Type</b>		<b>Size</b>		<b>Qty</b>	

**Fluid Data**

**Stage/Plug #: 1**

Fluid #	Stage Type	Fluid Name	Qty	Qty UoM	Mixing Density lbm/gal	Yield ft3/sack	Mix Fluid Gal	Rate bbl/min	Total Mix Fluid Gal
1	Fresh Water Spacer	Fresh Water Spacer	20	bbl	8.33				



Fluid #	Stage Type	Fluid Name	Qty	Qty UoM	Mixing Density lbm/gal	Yield ft3/sack	Mix Fluid Gal	Rate bbl/min	Total Mix Fluid Gal
2	Lead Cement	HALCEM (TM) SYSTEM	35	sack	15.8	1.152		6	4.93
94 lbm		CMT - PREMIUM - CLASS G REG OR TYPE V, BULK (100003685)							
4.93 Gal		FRESH WATER							
Fluid #	Stage Type	Fluid Name	Qty	Qty UoM	Mixing Density lbm/gal	Yield ft3/sack	Mix Fluid Gal	Rate bbl/min	Total Mix Fluid Gal
3	Displacement	Displacement	25.50	bbl	8.33				
Fluid #	Stage Type	Fluid Name	Qty	Qty UoM	Mixing Density lbm/gal	Yield ft3/sack	Mix Fluid Gal	Rate bbl/min	Total Mix Fluid Gal
4	Lead Cement	HALCEM (TM) SYSTEM	35	sack	15.8	1.147		6	4.99
4.99 Gal		FRESH WATER							
94 lbm		CMT - PREMIUM - CLASS G REG OR TYPE V, BULK (100003685)							
Cement Left In Pipe		Amount	84 ft		Reason		Shoe Joint		
Comment									

*The Road to Excellence Starts with Safety*

Sold To #: 343492	Ship To # 2404415	Quote #:	Sales Order #: 0901301086
Customer: Bill Barrett	Customer Rep:		
Well Name: A&N Farms	Well #: 12-9	API/UWI #:	
Field: Wattenberg	City (SAP): Lucerne	County/Parish: Weld	State: Colorado
Lat:	Long:		
Contractor: Workover	Rig/Platform Name/Num: Workover		
Job Purpose: Cement PNA	Ticket Amount:		
Well Type: Development Well	Job Type: Cement PNA		
Sales Person: GREGORY, JON	Srv Supervisor: Jason E Gibbs	MBU ID Emp #: 300487	

Activity Description	Date/Time	Cht #	Rate bbl/min	Volume bbl		Pressure psig		Comments
				Stage	Total	Tubing	Casing	
Arrive at Location from Service Center	4/27/14 0630							
Assessment Of Location Safety Meeting	4/27/14 0645							Hazard Hunt of the location and rig
Pre-Job Safety Meeting	4/27/14 0730							
Test Lines	4/27/14 0753						4000	Test to 3995 psi
Pump Spacer 1	4/27/14 0757		1	20			995	20bbl of H2O injection rate of 1000psi @ 1bbl/min
Pump Cement	4/27/14 0818		1	6			563	30 sks of HalCem @15.8#/gal 1.152 yeild 4.93 gal/sk
Shutdown	4/27/14 0832						0	
Pump Displacement	4/27/14 0902		1	25.5			487	Displace with H2O supplied by rig. Leave 1.3bbl in tubing to drop on top of retainer. Set @ 6918'
Shutdown	4/27/14 0905							Shutdown and wait on rig to pull and laydown 6968' of 2 3/8". Shot holes @ 825' and could not establish circulation to surface. Wait on orders from state and return tomorrow at 0800
Pump Spacer 1	4/28/14 1146		.5	10			956	10bbl of H2O
Pump Cement	4/28/14 1201		.5	46			403	227 sks of HalCem @15.8#/gal 1.15 yeild 5.0 gal/sk
Shutdown	4/28/14 1221							

**HALLIBURTON**

***Cementing Job Log***

Pump Displacement	4/28/14 1221		.5	2			1021	Displace with H2O supplied by rig. . Leave 1.3bbl in tubing to drop on top of retainer. Set @ 725'
End Job	4/28/14 1230							End Job

Sold To # : 340078

Ship To # :3456554

Prpsl #:

Sales Order # : 901232816

SUMMIT Version: 7.3.0127

Sunday, April 27, 2014 02:41:00

# HALLIBURTON

iCem<sup>®</sup> Service

## **BILL BARRETT CORPORATION E-BILL**

**For:**

Date: Monday, April 28, 2014

**A&N Farms 12-9 #2**

Case 1

Sincerely,



## Work Order Contract



Order Number: 0901301086

TO: HALLIBURTON ENERGY SERVICES, INC. - YOU ARE HEREBY REQUESTED TO FURNISH EQUIPMENT AND SERVICE PERSONNEL TO DELIVER AND OPERATE THE SAME AS AN INDEPENDENT CONTRACTOR TO CUSTOMER LISTED BELOW AND DELIVER AND SELL PRODUCTS, SUPPLIES AND MATERIALS FOR THE PURPOSE OF SERVICING:

Well No.	Farm or Lease	County	State	Well Permit Number
#12-9	A&N Farms	WELD	COLORADO	
Customer	Well Owner	Job Purpose		
BILL BARRETT CORPORATION E-BILL	Bill Barrett	CMT SQUEEZE PERFORATIONS BOM		

**THIS WORK ORDER MUST BE SIGNED BEFORE WORK IS COMMENCED**

A. CUSTOMER REPRESENTATION - Customer warrants that the well is in proper condition to receive the services, equipment, products, and materials to be supplied by Halliburton Energy Services, Inc. (hereinafter "Halliburton").

B. PRICE AND PAYMENT - The services, equipment, products, and/or materials to be supplied hereunder are priced in accordance with Halliburton's current price list. All prices of Halliburton are exclusive of any federal, state or municipal taxes which may be imposed on the sale or use of any materials, products or supplies furnished or services performed. Customer agrees to pay such taxes in addition to the prices in Halliburton's price list. If Customer does not have an approved open account with Halliburton, all sums due are payable in cash at the time of performance of services or delivery of equipment, products or materials. If Customer has an approved open account, invoices are payable on the twentieth day after the date of invoice. Customer agrees to pay interest on any unpaid balance from the date payable until paid at the highest lawful contract rate applicable, but never to exceed 18% per annum. In the event Halliburton employs an attorney for collection of any account, Customer agrees to pay attorney fees of 20% of the unpaid account, or Halliburton's actual attorney fees, whichever is greater, plus all collection and court costs. Customer agrees that the amount of attorney fees set out herein are reasonable and necessary.

C. **RELEASE AND INDEMNITY** - Customer agrees to **RELEASE** Halliburton Group from any and all liability for any and all damages whatsoever to property of any kind owned by, in the possession of, or leased by Customer and those persons and entities Customer has the ability to bind by contract or which are co-interest owners or joint ventures with Customer. Customer also agrees to **DEFEND, INDEMNIFY, AND HOLD** Halliburton Group **HARMLESS** from and against any and all liability, claims, costs, expenses, attorney fees and damages whatsoever for personal injury, illness, death, property damage and loss resulting from loss of well control; services to control a wild well whether underground or above the surface; reservoir or underground damage, including loss of oil, gas, other mineral substances or water; surface damage arising from underground damage; damage to or loss of the well bore; subsurface trespass or any action in the nature thereof; fire; explosion; subsurface pressure; radioactivity; and pollution and contamination and its cleanup and control.

**CUSTOMER'S RELEASE, DEFENSE, INDEMNITY AND HOLD HARMLESS** obligations will apply even if the liability and claims are caused by the sole, concurrent, active or passive negligence, fault, or strict liability of one or more members of the Halliburton Group, the unseaworthiness of any vessel or any defect in the data, products, supplies, materials or equipment furnished by any member or members of the Halliburton Group whether in the design, manufacture, maintenance or marketing thereof or from a failure to warn of such defect. "Halliburton Group" is defined as Halliburton Energy Services, Inc., its parent, subsidiary, and affiliated companies, insurers and subcontractors and all its/their officers, directors, employees, consultants and agents. **CUSTOMER'S RELEASE, DEFENSE, INDEMNITY AND HOLD HARMLESS** obligations apply whether the personal injury, illness, death, property damage or loss is suffered by one or more members of the Halliburton Group, Customer, or any other person or entity. Customer agrees to support such obligations assumed herein with liability insurance with limits of not less than \$500,000. Customer agrees to name Halliburton Group as named additional insured on all of its general liability policy(s). Customer agrees that its liability under this Contract is not limited by the amounts of its insurance coverage, except where and as may be required by applicable local law for the provisions of this Contract to be enforceable.

D. EQUIPMENT LIABILITY - Customer shall at its risk and expense attempt to recover any Halliburton Group equipment lost or lodged in the well. If the equipment is recovered and repairable, Customer shall pay the repair costs, unless caused by Halliburton's sole negligence. If the equipment is not recovered or is irreparable, Customer shall pay the current published replacement rate, unless caused by Halliburton's sole negligence. If a radioactive source becomes lost or lodged in the well, Customer shall meet all requirements of Section 39.15(a) of the Nuclear Regulatory Commission regulations and any other applicable laws or regulations concerning retrieval or abandonment and shall permit Halliburton to monitor the recovery or abandonment efforts all at no risk or liability to Halliburton Group. Customer shall be responsible for damage to or loss of Halliburton group equipment, products, and materials while in transit aboard Customer-supplied transportation, even if such is arranged by Halliburton at Customer's request, and during loading and unloading from such transport. Customer will also pay for the repair or replacement of Halliburton group equipment damaged by corrosion or abrasion due to well effluents.

E. LIMITED WARRANTY - Halliburton warrants only title to the equipment, products, and materials supplied under this Contract and that same are free from defects in workmanship and materials for thirty (30) days from the date of delivery. THERE ARE NO WARRANTIES, EXPRESS OR IMPLIED, OF MERCHANTABILITY, FITNESS OR OTHERWISE BEYOND THOSE STATED IN THE IMMEDIATELY PRECEDING SENTENCE. Halliburton's sole liability and Customer's exclusive remedy in any cause of action (whether in contract, tort, breach of warranty or otherwise) arising out of the sale, lease or use of any equipment, products, or materials is expressly limited to the replacement of such on their return to Halliburton or, at Halliburton's option, to the allowance to Customer of credit for the cost of such items. In no event shall Halliburton be liable for special, incidental, indirect, consequential, or punitive damages. Because of the uncertainty of variable well conditions and the necessity of relying on facts and supporting services furnished by others, HALLIBURTON IS UNABLE TO GUARANTEE THE EFFECTIVENESS OF THE EQUIPMENT, MATERIALS, OR SERVICE, NOR THE ACCURACY OF ANY CHART INTERPRETATION, RESEARCH ANALYSIS, JOB RECOMMENDATION OR OTHER DATA FURNISHED BY HALLIBURTON GROUP. Halliburton personnel will use their best efforts in gathering such information and their best judgment in interpreting it, but Customer agrees that Halliburton Group shall not be liable for and CUSTOMER SHALL INDEMNIFY HALLIBURTON GROUP AGAINST ANY DAMAGES ARISING FROM THE USE OF SUCH INFORMATION, even if such is contributed to or caused by the active or passive negligence, fault or strict liability of any member or members of Halliburton Group. Halliburton also does not warrant the accuracy of data transmitted by electronic process, and Halliburton will not be responsible for accidental or intentional interception of such data by third parties.

F. GOVERNING LAW - The validity, interpretation and construction of this Contract shall be determined by the laws of the jurisdiction where the services are performed or the equipment or materials are delivered.

G. DISPUTE RESOLUTION Except for Halliburton's statutory rights with regard to collection of past due invoices for services or materials, including the Contractor's statutory rights for perfection and enforcement of mechanics' and materialmen's liens, Customer and Halliburton agree that any dispute that may arise out of the performance of this Contract shall be resolved by binding arbitration by a panel of three arbitrators under the rules of the American Arbitration Association. The arbitration will take place in Houston, TX.

H. SEVERABILITY - If any provision or part thereof of this Contract shall be held to be invalid, void, or of no effect for any reason, such holding shall not be deemed to affect the validity of the remaining provisions of this Contract which can be given effect, without the invalid provision or part thereof, and to this end, the provisions of this Contract are declared to be severable. Customer and Halliburton agree that any provision of this Contract that is unenforceable or void under applicable law will be modified to achieve the intent of the parties hereunder to the greatest extent allowed by applicable law.

I. MODIFICATIONS - Customer agrees that Halliburton shall not be bound by any modifications to this Contract, except where such modification is made in writing by a duly authorized executive officer of Halliburton. Requests for modifications should be directed to the Vice President - Legal, 10200 Bellaire Blvd, Houston, TX 77072-5299.

**I HAVE READ AND UNDERSTAND THIS WORK ORDER CONTRACT WHICH CONTAINS RELEASE AND INDEMNITY LANGUAGE WHICH CUSTOMER ACKNOWLEDGES IS CONSPICUOUS AND AFFORDS FAIR AND ADEQUATE NOTICE AND I REPRESENT THAT I AM AUTHORIZED TO SIGN THE SAME AS CUSTOMER'S AGENT. I AM SIGNING THIS WORK ORDER CONTRACT WITH THE UNDERSTANDING THAT ITS TERMS AND CONDITIONS WILL NOT APPLY TO THE EXTENT THEY CONFLICT WITH TERMS AND CONDITIONS OF A SIGNED MASTER SERVICE CONTRACT BETWEEN THE PARTIES.**

**Customer Acceptance of Terms and Conditions, Materials and Services**

CUSTOMER Authorized Signatory

Date

CUSTOMER Name Printed