

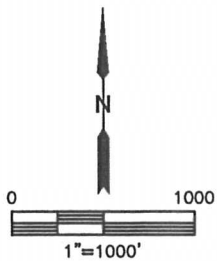
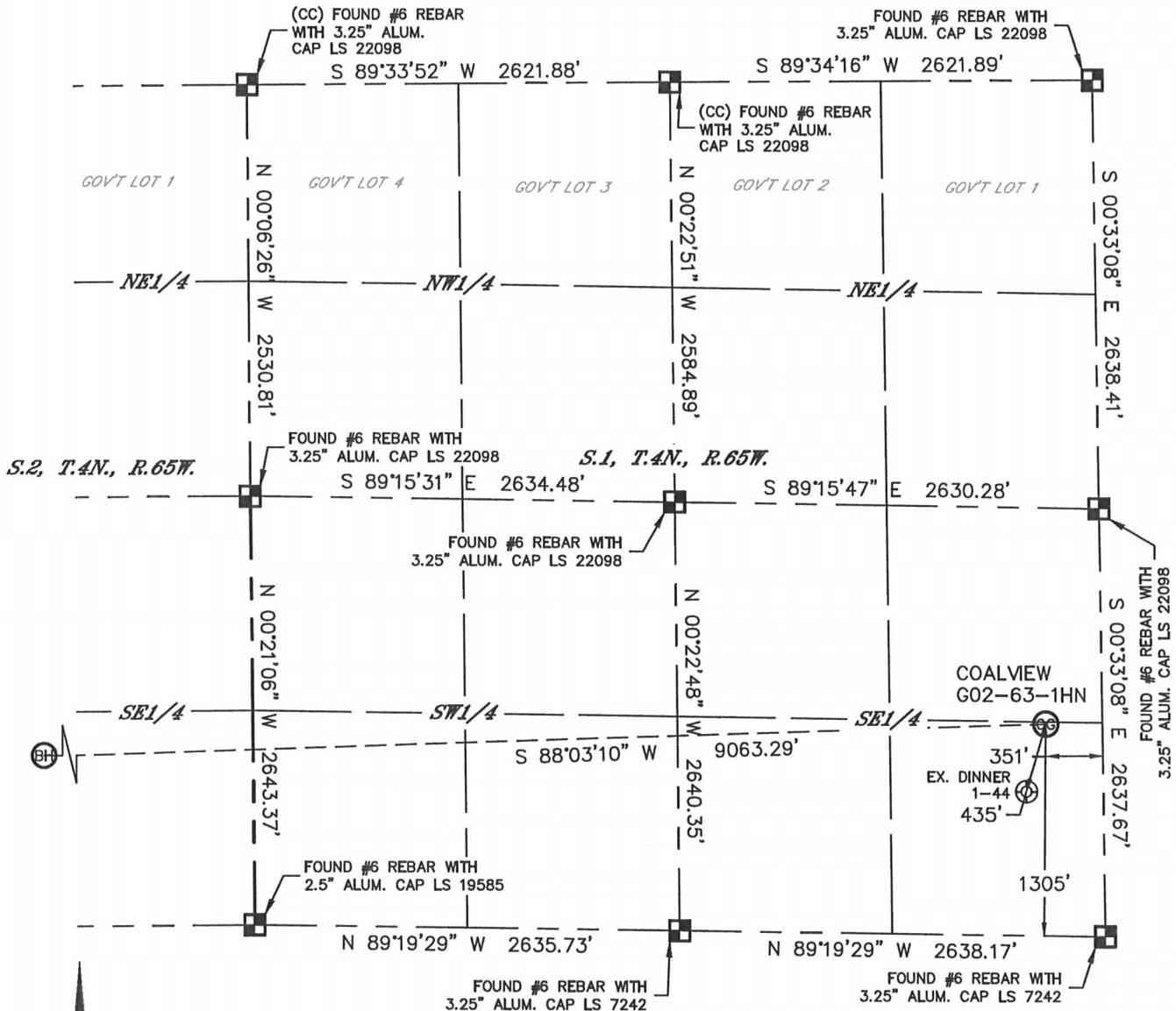


Lat40°, Inc. 1635 Foxtrail Drive, Suite 325 Loveland, CO 970-776-3321

# WELL LOCATION CERTIFICATE

THIS MAP DOES NOT REPRESENT A BOUNDARY SURVEY

SECTION: 1  
TOWNSHIP: 4N  
RANGE: 65W



In accordance with a request from Derrick Worden with Noble Energy Inc., Lat40°, Inc. has determined the surface location of the COALVIEW G02-63-1HN to be 1305' from the SOUTH line and 351' from the EAST line as measured at right angles from the section lines of Section 1, Township 4 North, Range 65 West and the bottom hole to be 980' from the SOUTH line and 1145' from the WEST line as measured at right angles from the section lines of Section 2, Township 4 North, Range 65 West of the Sixth Principal Meridian, County of Weld, State of Colorado.

I hereby state that this Well Location Certificate was prepared by me, or under my direct supervision, that the fieldwork was completed on 10/09/2013, for and on behalf of Noble Energy Inc.. That this is not a Land Survey Plat or an Improvement Survey Plat, and that it is not to be relied upon for establishment of fence, building, or other future improvement lines.

## NOTE:

- 1) Bearings shown are Grid Bearings of the Colorado State Plane Coordinate System, North Zone, North American Datum 1983/2007. The lined dimensions as contained herein are based upon the "U.S. Survey Foot."
  - 2) Ground elevations are based on an observed GPS elevation (NAVD 1988 DATUM).
  - 3) IMPROVEMENTS: See LOCATION DRAWING for all visible improvements within 500' of disturbed area.
  - 4) SURFACE USE: CRP
  - 5) INSTRUMENT OPERATOR: BRIAN ROTTINGHAUS
  - 6) NEAREST EXISTING WELL: DINNER 1-44, 435' SW
- NEAREST CULTURAL ITEMS:  
BUILDING: 1144' NE  
BUILDING UNIT: 1146' NE  
HIGH OCCUPANCY BUILDING UNIT: 5280'+  
DESIGNATED OUTSIDE ACTIVITY AREA: 5280'+  
PUBLIC ROAD: 332' E (CR 49)  
ABOVEGROUND UTILITY: 313' E  
RAILROAD: 5280'+  
PROPERTY LINE: 351' E

## SURFACE LOCATION

LAT: 40.33754°N  
LONG: 104.60330°W  
PDOP: 1.8  
ELEV: 4815'  
1/4, 1/4: SE1/4SE1/4

## BOTTOM HOLE

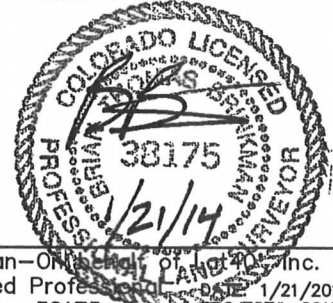
LAT: 40.33694°N  
LONG: 104.63579°W

## LEGEND

- = ALIQUOT MONUMENT AS DESCRIBED  
○ = CALCULATED POSITION

## SHEET 1 OF 2

Brian T. Brinkman—On behalf of Lat40°, Inc.  
Colorado Licensed Professional Land Surveyor No. 38175  
DATE: 1/21/2014  
PROJECT#: 2013145



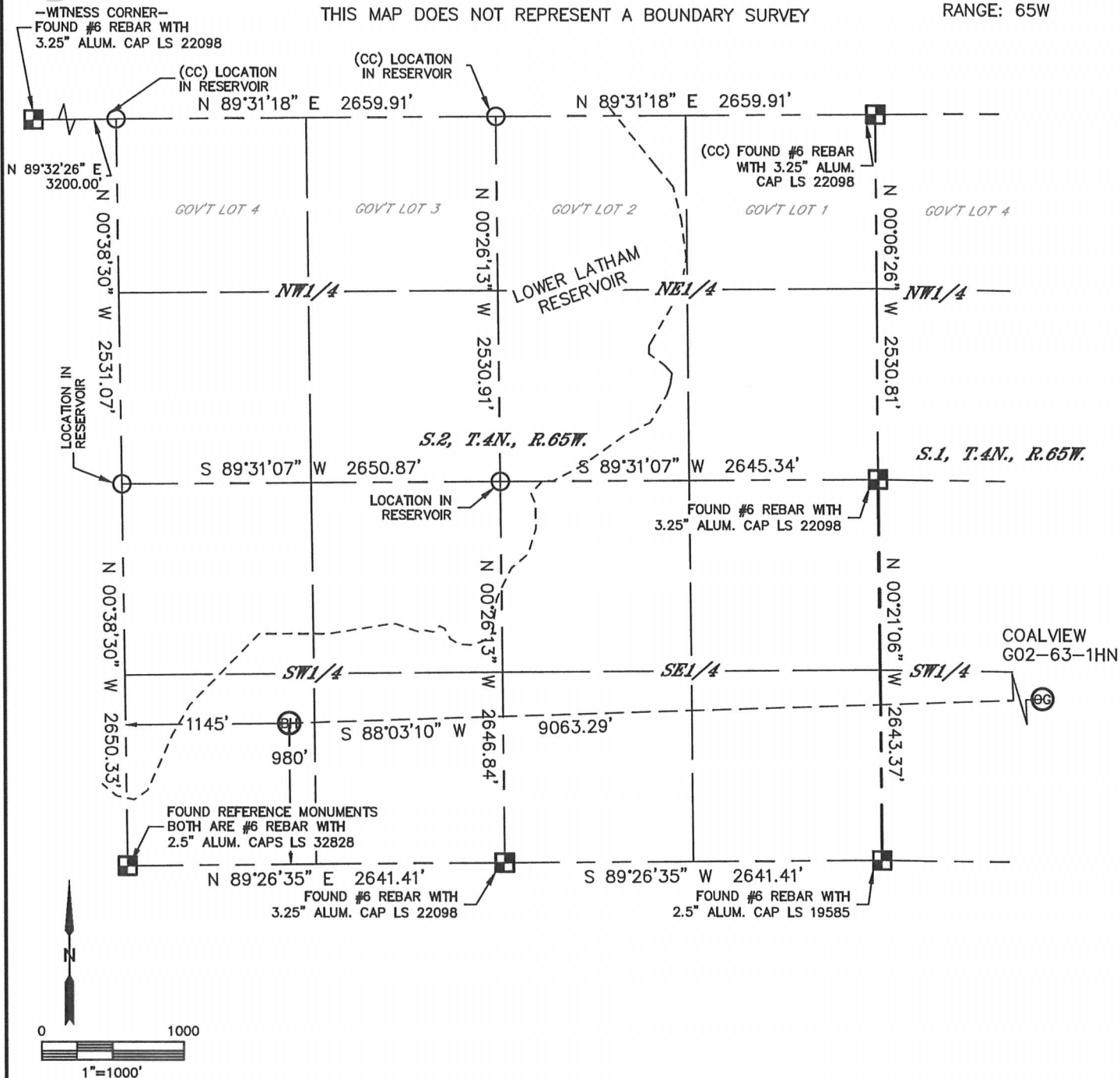


Lat40°, Inc. 1635 Foxtrail Drive, Suite 325 Loveland, CO 970-776-3321

# WELL LOCATION CERTIFICATE

SECTION: 1  
TOWNSHIP: 4N  
RANGE: 65W

THIS MAP DOES NOT REPRESENT A BOUNDARY SURVEY

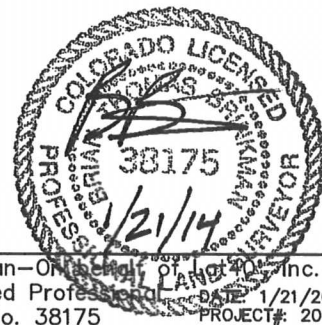


## LEGEND

- = ALIQUOT MONUMENT AS DESCRIBED
- = CALCULATED POSITION

## SHEET 2 OF 2

Brian T. Brinkman—On behalf of Lat40°, Inc.  
Colorado Licensed Professional Land Surveyor No. 38175  
DATE: 1/21/2014  
PROJECT#: 2013145



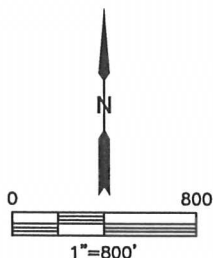
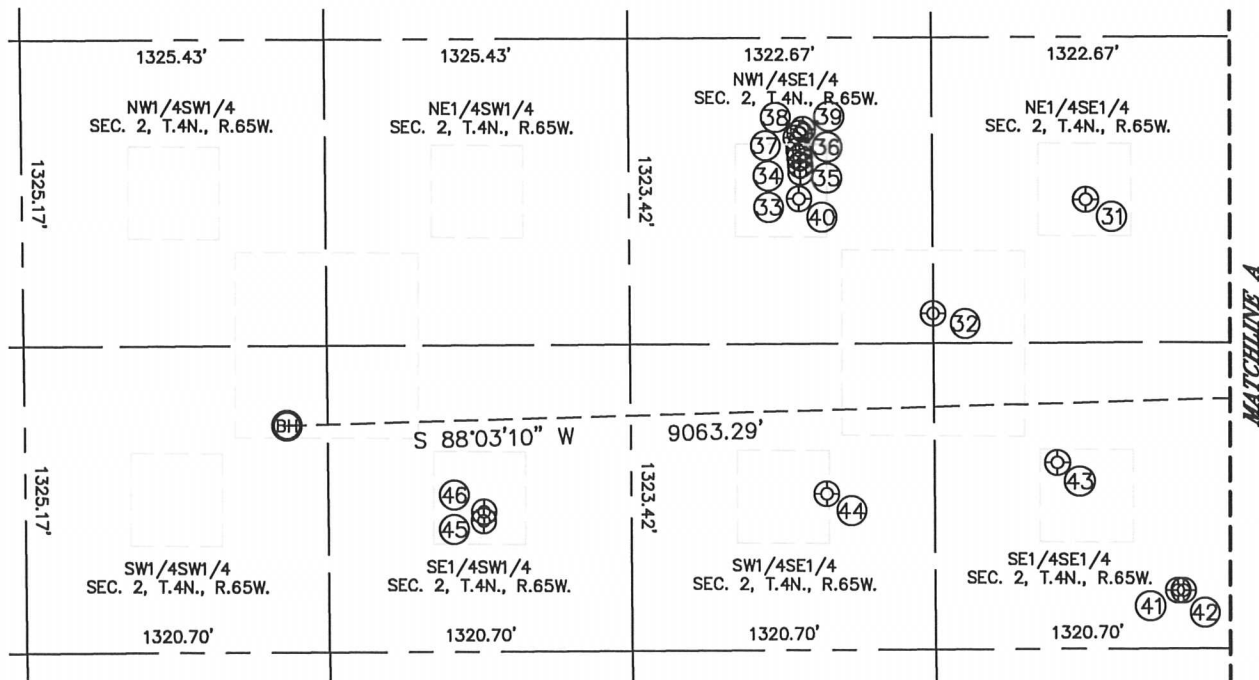
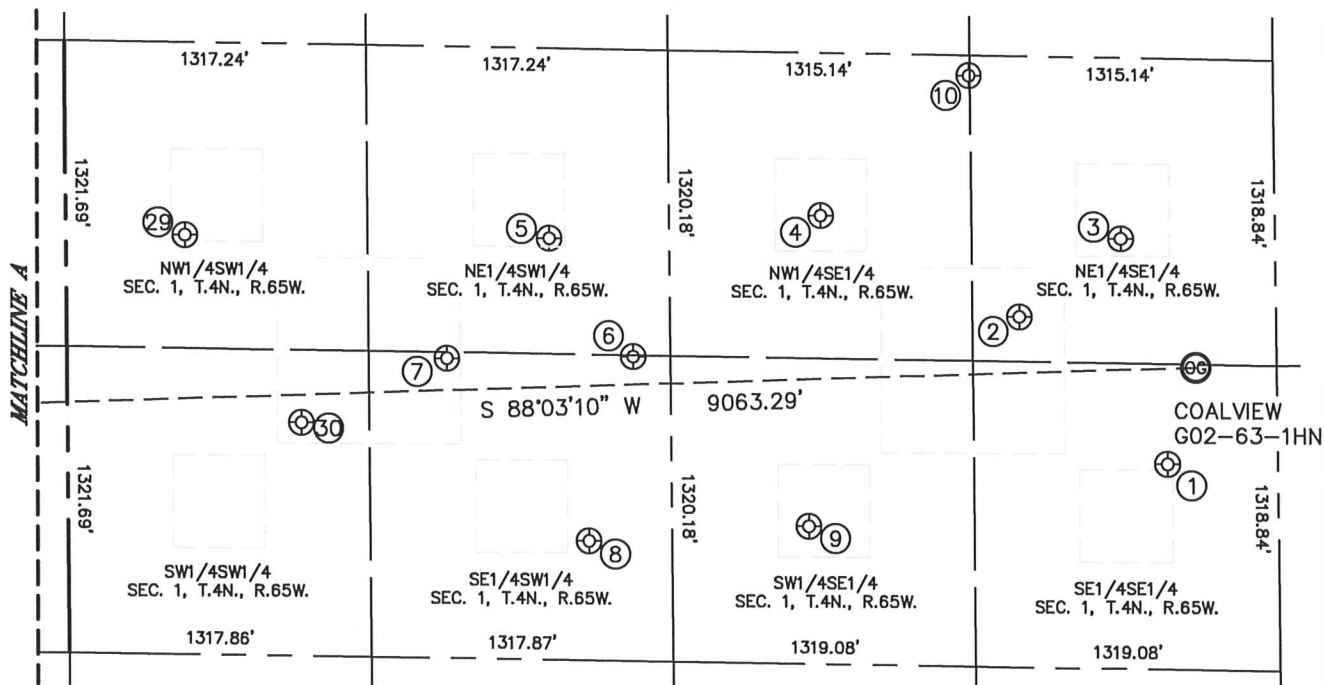


Lat40°, Inc. 1635 Foxtrail Drive, Suite 325 Loveland, CO 970-776-3321

# SITE SKETCH

COALVIEW G02-63-1HN

SECTION: 1  
TOWNSHIP: 4N  
RANGE: 65W



SHEET 1 OF 2

DATE: 1/21/2014  
PROJECT#: 2013145



Lat40°, Inc. 1635 Foxtrail Drive, Suite 325 Loveland, CO 970-776-3321

**SITE SKETCH**  
COALVIEW G02-63-1HN

SECTION: 1  
TOWNSHIP: 4N  
RANGE: 65W

WELL NO.	WELL NAME	SHL FOOTAGE				SHL LAT°	SHL LONG°	PDOP	ELEV (FT.)	1/4/1/4
1	DINNER 1-44	887	FSL	478	FEL	40.33640	-104.60375	1.6	4807	SESE
2	DINNER 1-45	1512	FSL	1111	FEL	40.33815	-104.60602	1.6	4798	NESE
3	DINNER 1-2	1855	FSL	667	FEL	40.33907	-104.60443	1.6	4815	NESE
4	DINNER 1-42	1936	FSL	974	FEL	40.33937	-104.60912	1.9	4783	NWSE
5	MUIRHEAD 1-2	1819	FSL	2109	FWL	40.33912	-104.61336	1.9	4767	NESW
6	MUIRHEAD 1-3-23	1314	FSL	2472	FWL	40.33771	-104.61207	1.9	4765	SESW
7	MUIRHEAD 1-35	1293	FSL	1657	FWL	40.33770	-104.61499	1.9	4753	SESW
8	MUIRHEAD 1-34	515	FSL	2272	FWL	40.33553	-104.61280	1.9	4752	SESW
9	DINNER 1-1	594	FSL	2041	FEL	40.33569	-104.60936	1.9	4768	SWSE
10	DINNER PC G01-22	2551	FSL	1321	FEL	40.34102	-104.60677	2.1	4801	NWSE
29	MUIRHEAD 1-3	1810	FSL	520	FWL	40.33919	-104.61906	1.9	4740	NWSW
30	MUIRHEAD 1-1	1007	FSL	1020	FWL	40.33695	-104.61728	1.9	4732	SWSW
31	LATHAM 2-1	1941	FSL	657	FEL	40.33958	-104.62328	2.0	4711	NESE
32	LOWER LATHAM 2-45	1451	FSL	1323	FEL	40.33823	-104.62568	2.0	4689	NWSE
33	LOWER LATHAM 2-13G	2063	FSL	1897	FEL	40.33991	-104.62773	1.9	4678	NWSE
34	LOWER LATHAM 2-12G	2095	FSL	1899	FEL	40.34000	-104.62773	1.9	4678	NWSE
35	LOWER LATHAM 2-5G	2128	FSL	1901	FEL	40.34009	-104.62774	2.3	4678	NWSE
36	LOWER LATHAM 2-6G	2159	FSL	1904	FEL	40.34018	-104.62775	1.9	4678	NWSE
37	USED G 2-25	2213	FSL	1916	FEL	40.34032	-104.62779	2.3	4677	NWSE
38	USED G 2-20	2232	FSL	1901	FEL	40.34038	-104.62774	2.7	4677	NWSE
39	USED G 2-21	2250	FSL	1885	FEL	40.34042	-104.62768	2.8	4677	NWSE
40	LATHAM 2-42	1949	FSL	1905	FEL	40.33960	-104.62775	2.8	4678	NWSE
41	LOWER LATHAM PC G12-69HN	250	FSL	273	FEL	40.33494	-104.62192	2.9	4710	SESE
42	LOWER LATHAM PC G11-69HN	250	FSL	250	FEL	40.33494	-104.62184	3.3	4711	SESE
43	LATHAM 2-44	804	FSL	786	FEL	40.33646	-104.62376	2.8	4702	SESE
44	LATHAM 2-43	675	FSL	1793	FEL	40.33610	-104.62737	2.0	4681	SWSE
45	LATHAM 2-31	564	FSL	1998	FWL	40.33580	-104.63273	1.7	4674	SESW
46	LATHAM RESEVIOR 2-1	604	FSL	2000	FWL	40.33591	-104.63273	1.7	4674	SESW

*SHEET 2 OF 2*

DATE: 2/11/2014  
PROJECT#: 2013145