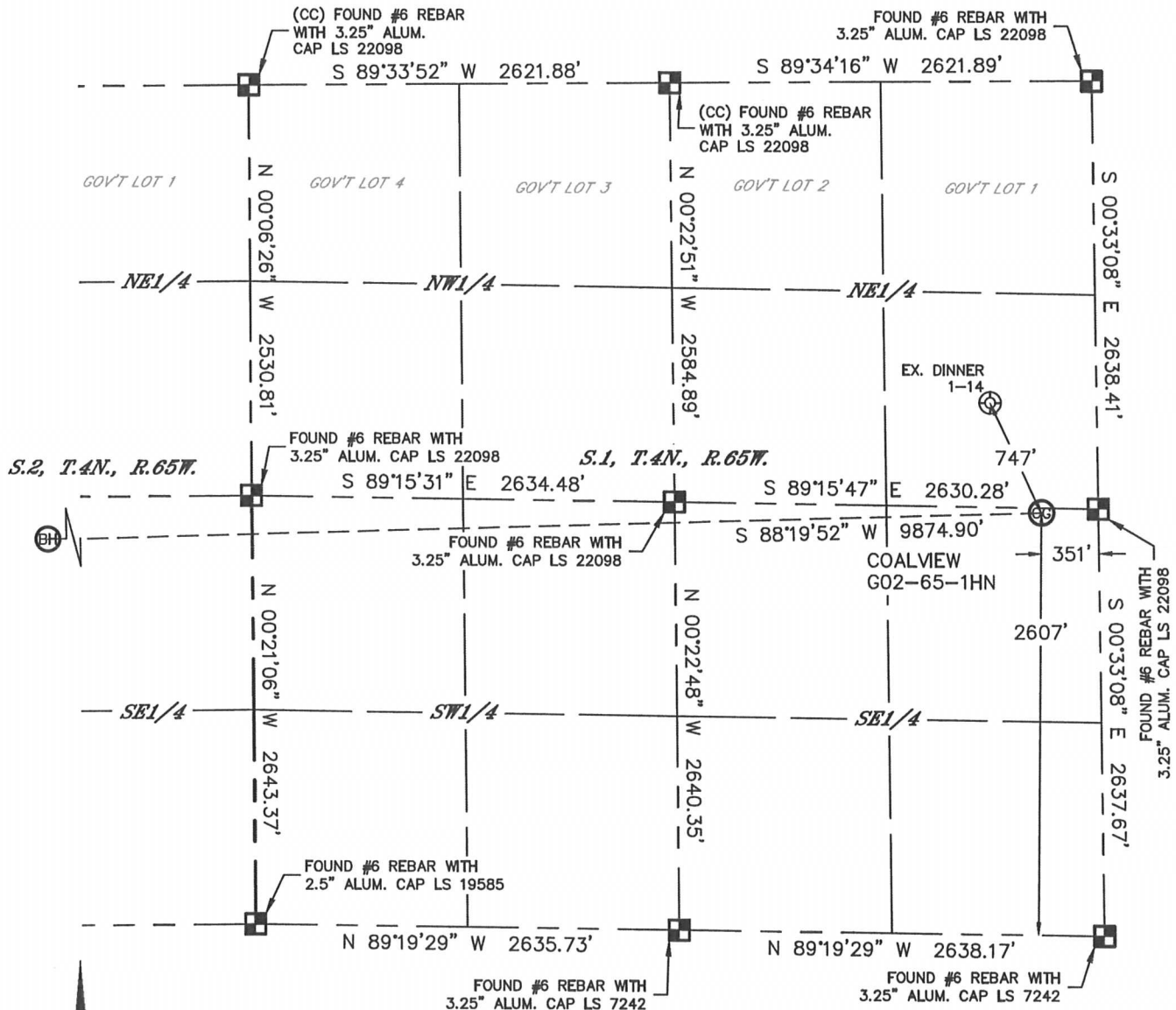


Lat40°, Inc. 1635 Foxtrail Drive, Suite 325 Loveland, CO 970-776-3321

WELL LOCATION CERTIFICATE

THIS MAP DOES NOT REPRESENT A BOUNDARY SURVEY



SECTION: 1
TOWNSHIP: 4N
RANGE: 65W



In accordance with a request from Derrick Worden with Noble Energy Inc., Lat401, Inc. has determined the surface location of the COALVIEW G02-65-1HN to be 2607' from the SOUTH line and 351' from the EAST line as measured at right angles from the section lines of Section 1, Township 4 North, Range 65 West and the bottom hole to be 2310' from the SOUTH line and 335' from the WEST line as measured at right angles from the section lines of Section 2, Township 4 North, Range 65 West of the Sixth Principal Meridian, County of Weld, State of Colorado.

I hereby state that this Well Location Certificate was prepared by me, or under my direct supervision, that the fieldwork was completed on 10/09/2013, for and on behalf of Noble Energy Inc.. That this is not a Land Survey Plat or an Improvement Survey Plat, and that it is not to be relied upon for establishment of fence, building, or other future improvement lines.

NOTE:

- 1) Bearings shown are Grid Bearings of the Colorado State Plane Coordinate System, North Zone, North American Datum 1983/2007. The lined dimensions as contained herein are based upon the "U.S. Survey Foot."
2) Ground elevations are based on an observed GPS elevation (NAVD 1988 DATUM).
3) IMPROVEMENTS: See LOCATION DRAWING for all visible improvements within 500' of disturbed area.
4) SURFACE USE: CRP
5) INSTRUMENT OPERATOR: BRIAN ROTTINGHAUS
6) NEAREST EXISTING WELL: DINNER 1-14, 747' NW
NEAREST CULTURAL ITEMS:
BUILDING: 776' NE
BUILDING UNIT: 776' NE
HIGH OCCUPANCY BUILDING UNIT: 5280'+
DESIGNATED OUTSIDE ACTIVITY AREA: 5280'+
PUBLIC ROAD: 332' E (CR 49)
ABOVEGROUND UTILITY: 392' E
RAILROAD: 5280'+
PROPERTY LINE: 351' E
- LEGEND
 = ALIQUOT MONUMENT AS DEPICTED
 = CALCULATED POSITION

SURFACE LOCATION

LAT: 40.34111N
LONG: 104.60330W
PDOP: 2.7
ELEV: 4828'
1/4,1/4: NE1/4SE1/4

BOTTOM HOLE

LAT: 40.34059N
LONG: 104.63871W



SHEET 1 OF 2

Brian T. Brinkman—Owner of TTB, Inc.
Colorado Licensed Professional Surveyor No. 38175
DATE: 1/21/2014
PROJECT#: 2013145

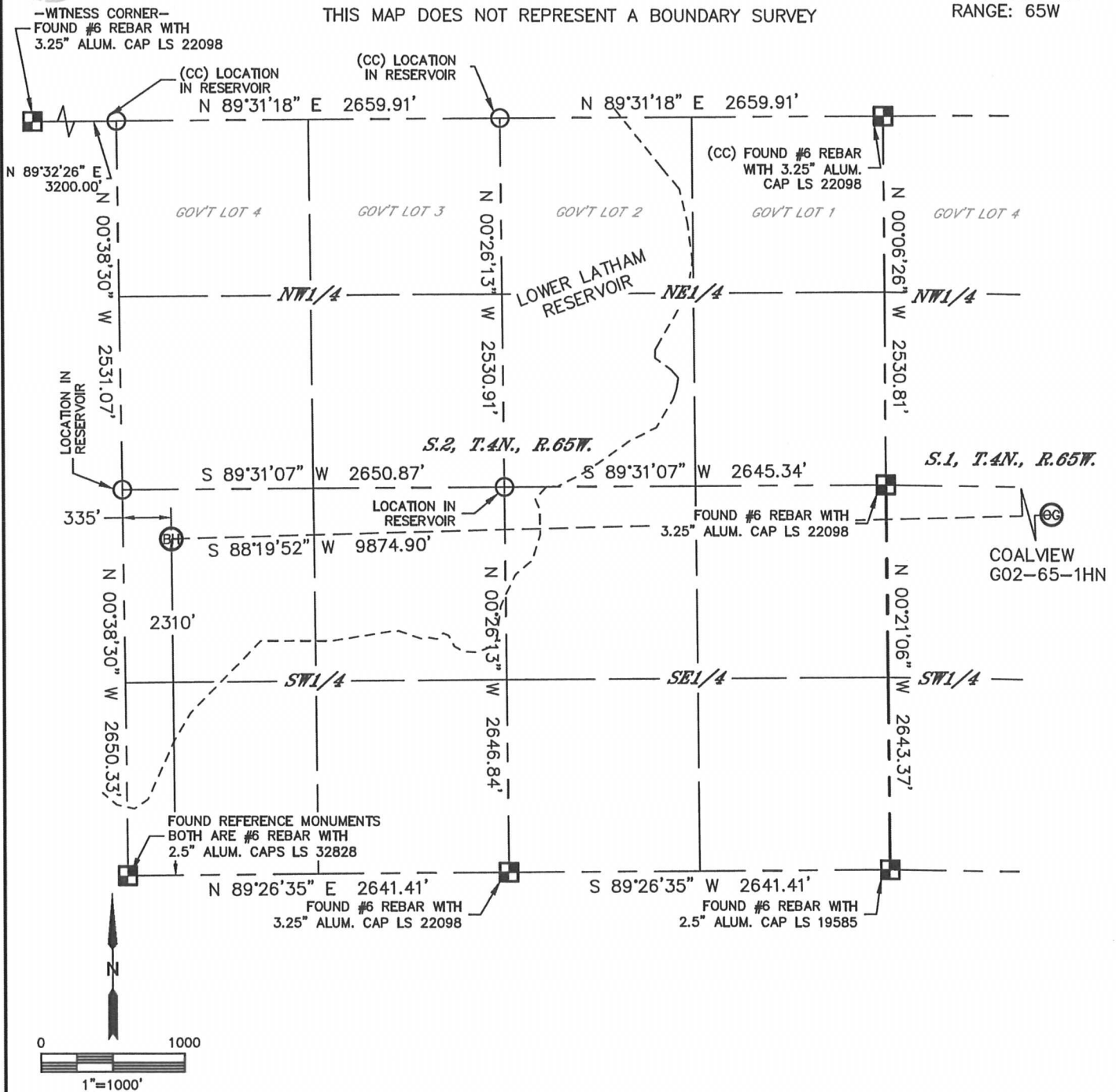


Lat40°, Inc. 1635 Foxtrail Drive, Suite 325 Loveland, CO 970-776-3321

WELL LOCATION CERTIFICATE

SECTION: 1
TOWNSHIP: 4N
RANGE: 65W

THIS MAP DOES NOT REPRESENT A BOUNDARY SURVEY

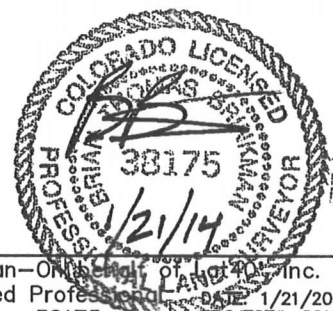


LEGEND

- = ALIQUOT MONUMENT AS DESCRIBED
- = CALCULATED POSITION

SHEET 2 OF 2

Brian T. Brinkman—On behalf of Lat40°, Inc.
Colorado Licensed Professional Land Surveyor No. 38175
DATE: 1/21/2014
PROJECT#: 2013145



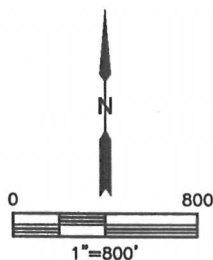
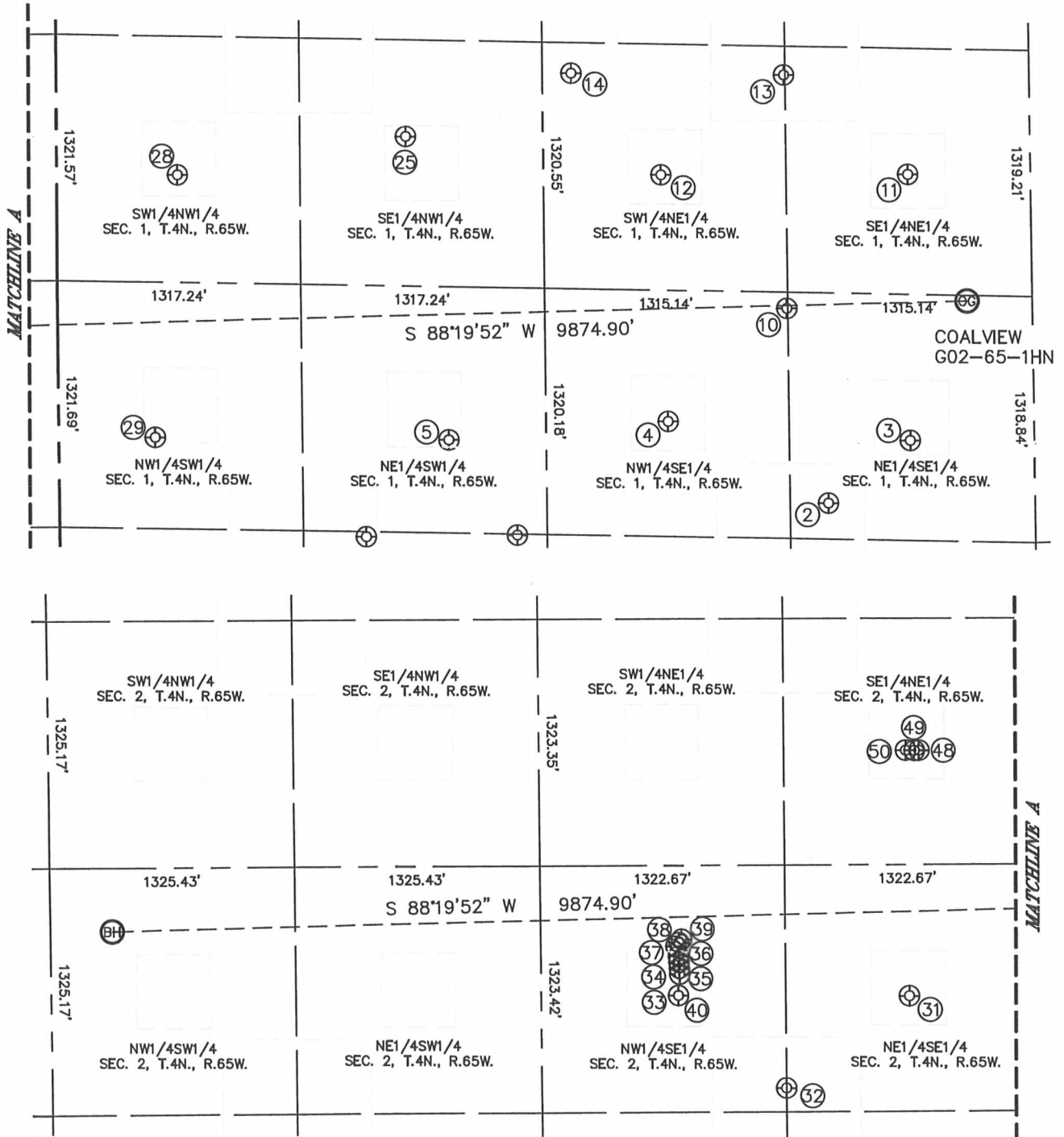


Lat40°, Inc. 1635 Foxtrail Drive, Suite 325 Loveland, CO 970-776-3321

SITE SKETCH

COALVIEW G02-65-1HN

SECTION: 1
TOWNSHIP: 4N
RANGE: 65W



SHEET 1 OF 2

DATE: 1/21/2014
PROJECT#: 2013145



Lat40°, Inc. 1635 Foxtrail Drive, Suite 325 Loveland, CO 970-776-3321

SITE SKETCH

COALVIEW G02-65-1HN

SECTION: 1
TOWNSHIP: 4N
RANGE: 65W

WELL NO.	WELL NAME	SHL FOOTAGE				SHL LAT°	SHL LONG°	PDOP	ELEV (FT.)	1/4/1/4
2	DINNER 1-45	1512	FSL	1111	FEL	40.33815	-104.60602	1.6	4798	NESE
3	DINNER 1-2	1855	FSL	667	FEL	40.33907	-104.60443	1.6	4815	NESE
4	DINNER 1-42	1936	FSL	974	FEL	40.33937	-104.60912	1.9	4783	NWSE
5	MUIRHEAD 1-2	1819	FSL	2109	FWL	40.33912	-104.61336	1.9	4767	NESW
10	DINNER PC G01-22	2551	FSL	1321	FEL	40.34102	-104.60677	2.1	4801	NWSE
11	DINNER 1-14	1982	FNL	659	FEL	40.34298	-104.60440	1.8	4820	SENE
12	DINNER 1-3	1981	FNL	1994	FEL	40.34299	-104.60919	1.6	4786	SWNE
13	DINNER 1-15	1446	FNL	1321	FEL	40.34445	-104.60677	1.7	4813	SWNE
14	DINNER 1-1-19	1433	FNL	2471	FEL	40.34450	-104.61090	2.0	4775	SWNE
25	MUIRHEAD 1-4	1769	FNL	1888	FWL	40.34358	-104.61412	2.1	4762	SENW
28	WEIDENKELLER 1-1	1969	FNL	651	FWL	40.34304	-104.61856	1.8	4737	SWNW
29	MUIRHEAD 1-3	1810	FSL	520	FWL	40.33919	-104.61906	1.9	4740	NWSW
31	LATHAM 2-1	1941	FSL	657	FEL	40.33958	-104.62328	2.0	4711	NESE
32	LOWER LATHAM 2-45	1451	FSL	1323	FEL	40.33823	-104.62568	2.0	4689	NWSE
33	LOWER LATHAM 2-13G	2063	FSL	1897	FEL	40.33991	-104.62773	1.9	4678	NWSE
34	LOWER LATHAM 2-12G	2095	FSL	1899	FEL	40.34000	-104.62773	1.9	4678	NWSE
35	LOWER LATHAM 2-5G	2128	FSL	1901	FEL	40.34009	-104.62774	2.3	4678	NWSE
36	LOWER LATHAM 2-6G	2159	FSL	1904	FEL	40.34018	-104.62775	1.9	4678	NWSE
37	USED G 2-25	2213	FSL	1916	FEL	40.34032	-104.62779	2.3	4677	NWSE
38	USED G 2-20	2232	FSL	1901	FEL	40.34038	-104.62774	2.7	4677	NWSE
39	USED G 2-21	2250	FSL	1885	FEL	40.34042	-104.62768	2.8	4677	NWSE
40	LATHAM 2-42	1949	FSL	1905	FEL	40.33960	-104.62775	2.8	4678	NWSE
48	LOWER LATHAM PC G01-32D	1919	FNL	599	FEL	40.34319	-104.62305	2.7	4692	SENE
49	LOWER LATHAM PC G02-22D	1919	FNL	622	FEL	40.34319	-104.62313	2.7	4692	SENE
50	LOWER LATHAM RESERVOIR CO2-8G	1918	FNL	669	FEL	40.34319	-104.62330	5.3	4690	SENE

SHEET 2 OF 2

DATE: 2/17/2014
PROJECT#: 2013145