

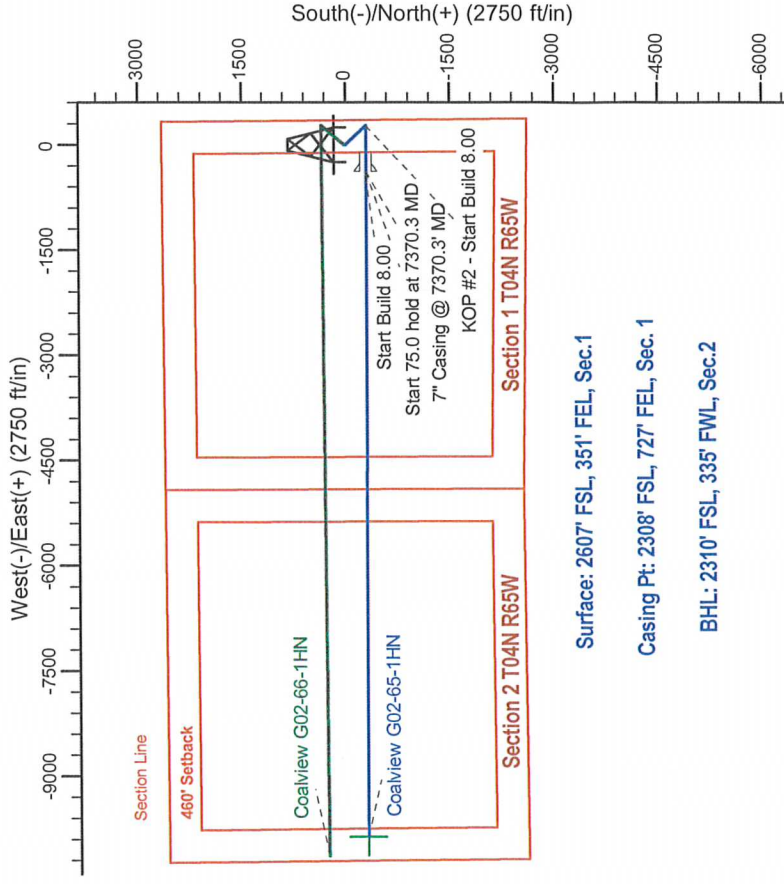
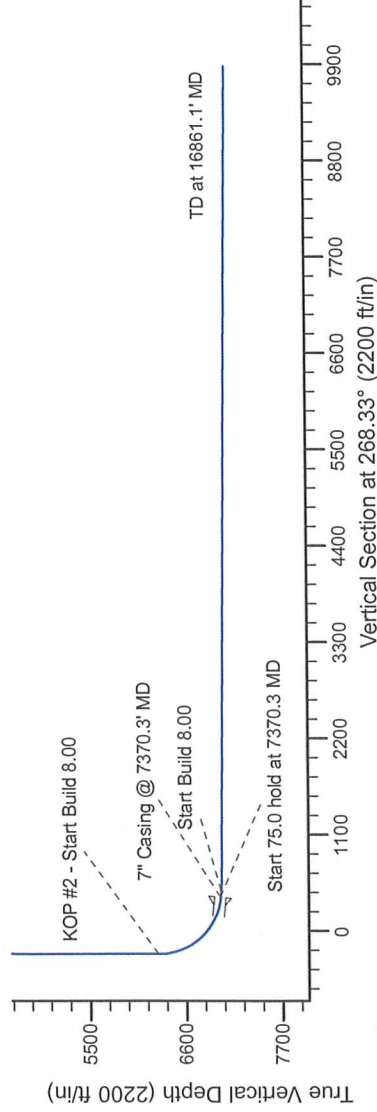
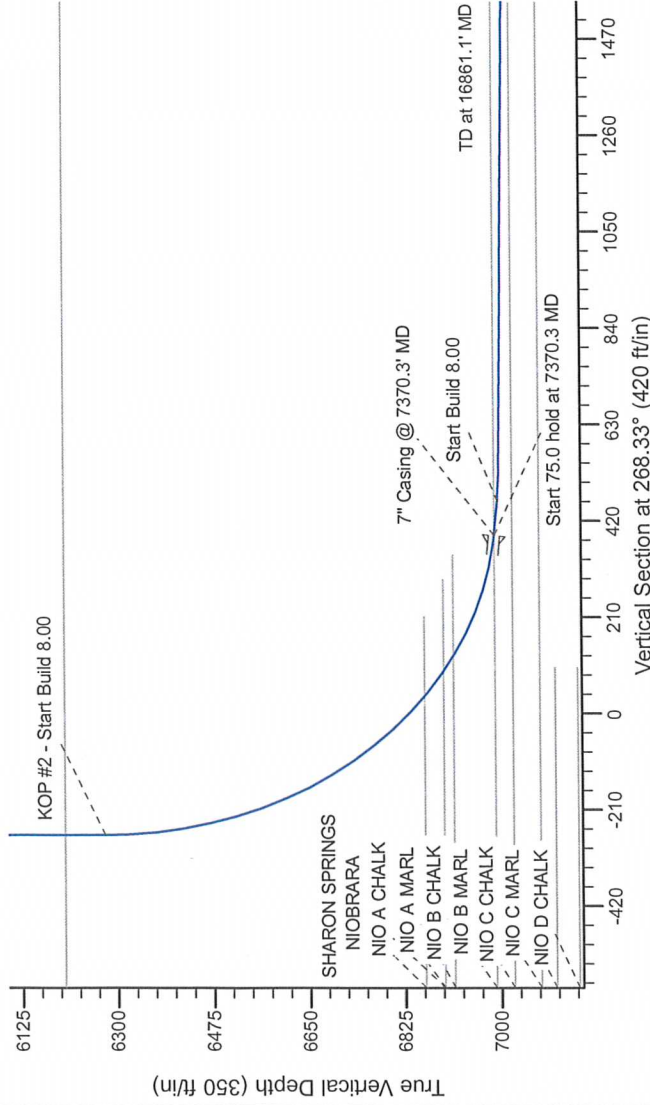
Project: Wattenberg Field  
Site: G (Sec.1-T04N-R65W) Weld County, CO  
Well: Coalview G02-65-1HN  
Wellbore: Original Drilling  
Design: APD - Rev 0

# Northern Region Drilling - Working

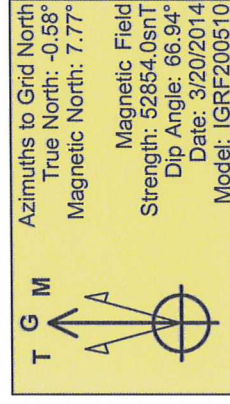
Geodetic System: US State Plane 1983  
Datum: North American Datum 1983  
Ellipsoid: GRS 1980  
Zone: Colorado Northern Zone  
System Datum: Mean Sea Level

## SECTION DETAILS

Sec	MD	Inc	Azi	TVD	+N/-S	+E/-W	Dleg	TFace	Vsect	Target
1	0.0	0.00	0.00	0.0	0.0	0.0	0.00	0.00	0.0	
2	1800.0	0.00	0.00	1800.0	0.0	0.0	0.00	0.00	0.0	
3	2251.4	9.03	137.20	2249.5	-26.0	24.1	2.00	137.20	-23.3	
4	4378.7	9.03	137.20	4350.5	-271.0	250.9	0.00	0.00	-242.9	
5	4830.1	0.00	0.00	4800.0	-297.0	275.0	2.00	180.00	-266.2	
6	6307.8	0.00	0.00	6277.7	-297.0	275.0	0.00	0.00	-266.2	
7	7370.3	85.00	270.05	6991.2	-296.4	-378.8	8.00	270.05	387.2	
8	7445.3	85.00	270.05	6997.7	-296.3	-453.5	0.00	0.00	461.9	
9	7500.3	89.40	270.05	7000.4	-296.2	-508.4	8.00	0.00	516.8	
10	16861.1	89.40	270.05	7098.4	-287.3	-9868.7	0.00	0.00	9872.9	Coalview G02-65-1HN BHL 2310'FSL 335'FWL



Surface: 2607' FSL, 351' FEL, Sec.1  
Casing Pt: 2308' FSL, 727' FEL, Sec. 1  
BHL: 2310' FSL, 335' FWL, Sec.2



WELL DETAILS: Coalview G02-65-1HN

	North	East	Ground Level	Latitude	Longitude
0.0	0.0	1368370.88	3249952.92	40.341110	-104.603300

Plan: APD - Rev 0 (Coalview G02-65-1HN/Original Drilling)

Created By: Shalley Jewell	Date: 15:18, March 20 2014
Checked:	Date:
Reviewed:	Date:
Approved:	Date: