

Project: Wattenberg Field
Site: G (Sec.1-T04N-R65W) Weld County, CO
Well: Coalview G02-64-1HN
Wellbore: Original Drilling
Design: APD - Rev 0

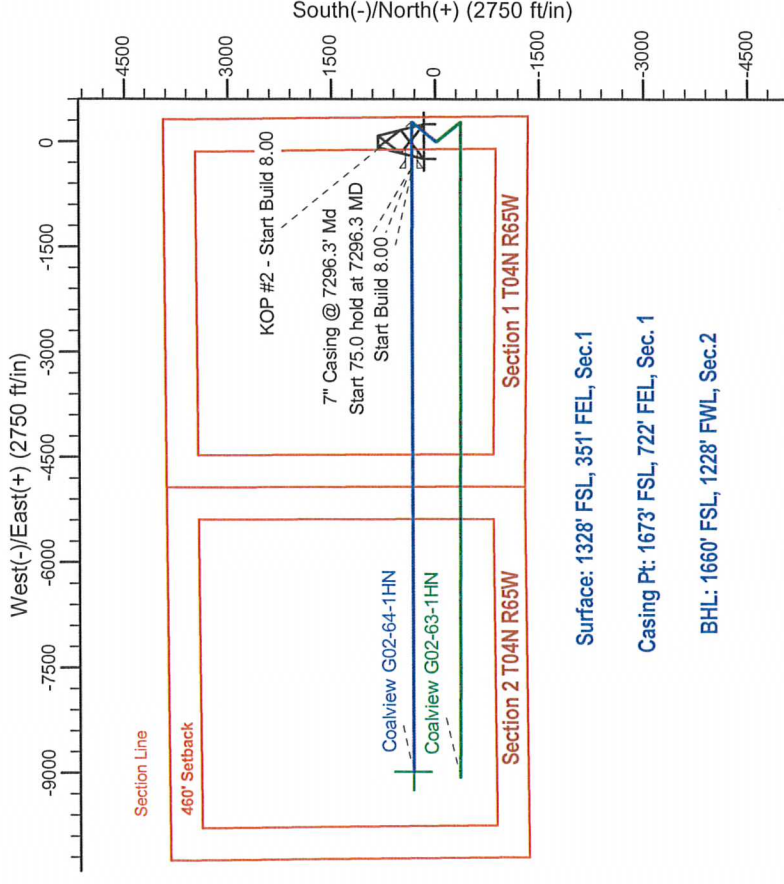
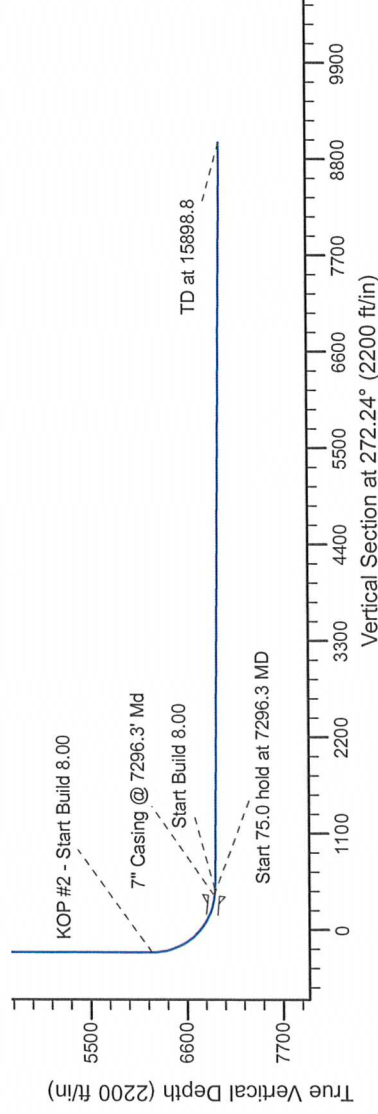
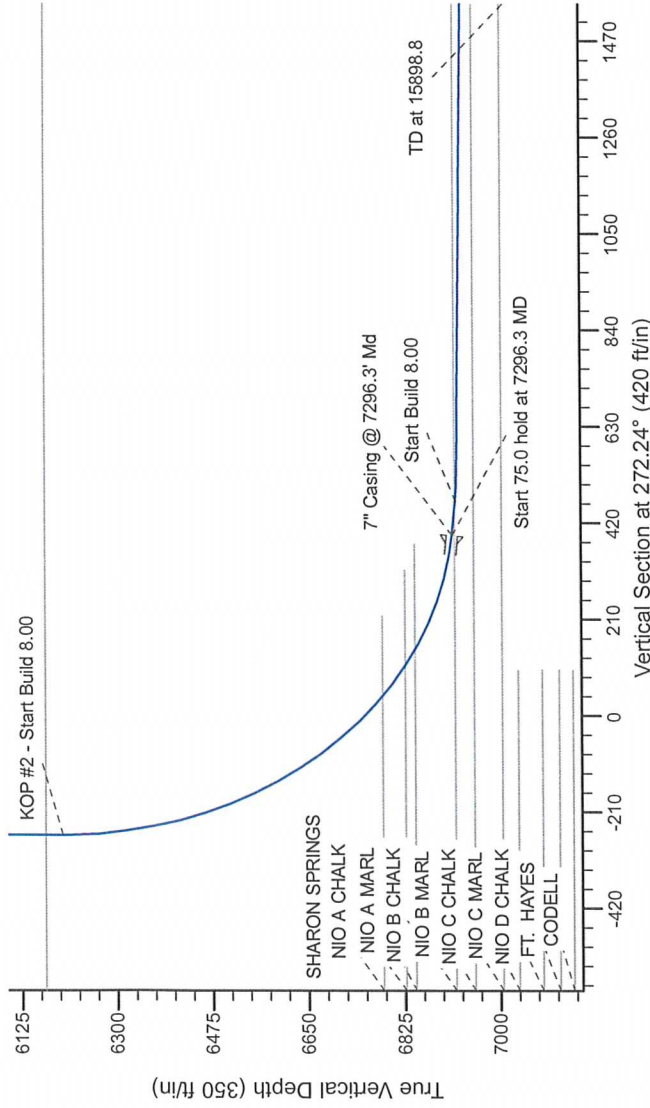
Geodetic System: US State Plane 1983
Datum: North American Datum 1983
Ellipsoid: GRS 1980
Zone: Colorado Northern Zone
System Datum: Mean Sea Level

Northern Region Drilling - Working

SECTION DETAILS

Sec	MD	Inc	Azi	TVD	+N/S	+E/W	Dleg	TFace	VSeet	Target
1	0.0	0.00	0.00	0.0	0.0	0.0	0.00	0.00	0.0	
2	1500.0	9.00	38.40	1500.0	0.0	0.0	0.00	0.00	0.0	
3	4321.6	9.02	38.40	4290.7	27.8	22.0	2.00	38.40	-20.9	
4	4773.1	0.00	0.00	4740.0	319.2	253.0	0.00	0.00	-240.3	
5	6293.8	0.00	0.00	6200.7	347.0	275.0	0.00	180.00	-261.2	
6	7296.3	85.00	270.03	6914.2	347.3	275.0	0.00	270.03	392.1	
7	7321.3	85.00	270.03	6920.7	347.4	-453.5	0.00	0.00	466.7	
8	7426.3	89.40	270.03	6923.4	347.4	-508.4	8.00	0.00	521.6	
10	15898.8	89.40	270.03	7012.1	351.7	-8980.5	0.00	0.00	8987.4	

Coalview G02-64-1HN BHL 1660'FSL, 1228'FWL



Surface: 1328' FSL, 351' FEL, Sec.1

Casing Pt: 1673' FSL, 722' FEL, Sec. 1

BHL: 1660' FSL, 1228' FWL, Sec.2

T

G

M

Azimuths to Grid North
True North: -0.58°
Magnetic North: 7.77°
Magnetic Field
Strength: 52852.3snT
Dip Angle: 66.94°
Date: 3/20/2014
Model: IGRF200510

WELL DETAILS: Coalview G02-64-1HN

North	East	Ground Level	Latitude	Longitude
0.0	0.0	3249665.85	40.337600	-104.603300

Plan: APD - Rev 0 (Coalview G02-64-1HN)Original Drilling)

Created By: Shalley Jewell Date: 14:32, March 20 2014

Checked: _____ Date: _____
Reviewed: _____ Date: _____
Approved: _____ Date: _____