



**TEMPERATURE LOG  
GAMMA RAY / CCL**

Company	WPIX ENERGY LLC.		
Well	NER 44-32		
Field	RULISON		
County	GARFIELD	State	COLORADO
Location:	API #: 05 - 045 - 21790 - 00		Other Services
Permanent Datum	SEC 5 TWP 7S RGE 93W	Elevation	
Log Measured From	G.L.	7603'	
Drilling Measured From	K.B.	Elevation	
	K.B.	7629'	
	K.B.	D.F. 7628'	
	K.B.	G.L. 7603'	
Date	03 - 21 - 2014		
Run Number	ONE		
Depth Driller	10434'		
Present Depth Driller	NA		
Depth Logger	10349'		
Bottom Logged Interval	10349'		
Top Log Interval	SURFACE		
Fluid Level	SURFACE		
Type Fluid	WATER		
Max. Recorded Temp.	229.8° F		
Estimated Cement Top	4322'		
Equipment Number	209		
Location	GRAND JCT.		
Recorded By	INGRAM	MCBROOM	
Witnessed By	MIR. HARTL		
Run Number	Borehole Record	Casing Record	
	Bit	From	To
		9.625"	1158'
		4.5"	10422'

<<< Fold Here >>>

All interpretations are opinions based on inferences from electrical or other measurements and we cannot and do not guarantee the accuracy or correctness of any interpretation, and we shall not, except in the case of gross or willful negligence on our part, be liable or responsible for any loss, costs, damages, or expenses incurred or sustained by anyone resulting from any interpretation made by any of our officers, agents or employees. These interpretations are also subject to our general terms and conditions set out in our current Price Schedule.

WARRIOR 7.0 SOFTWARE - Comments

**NOTE: THERE WAS NO CORELATION LOG TO CORELATE TO**

**MAX TEMP = 229.8° F**

**SHORT JOINTS = 6750' TO 6770'**

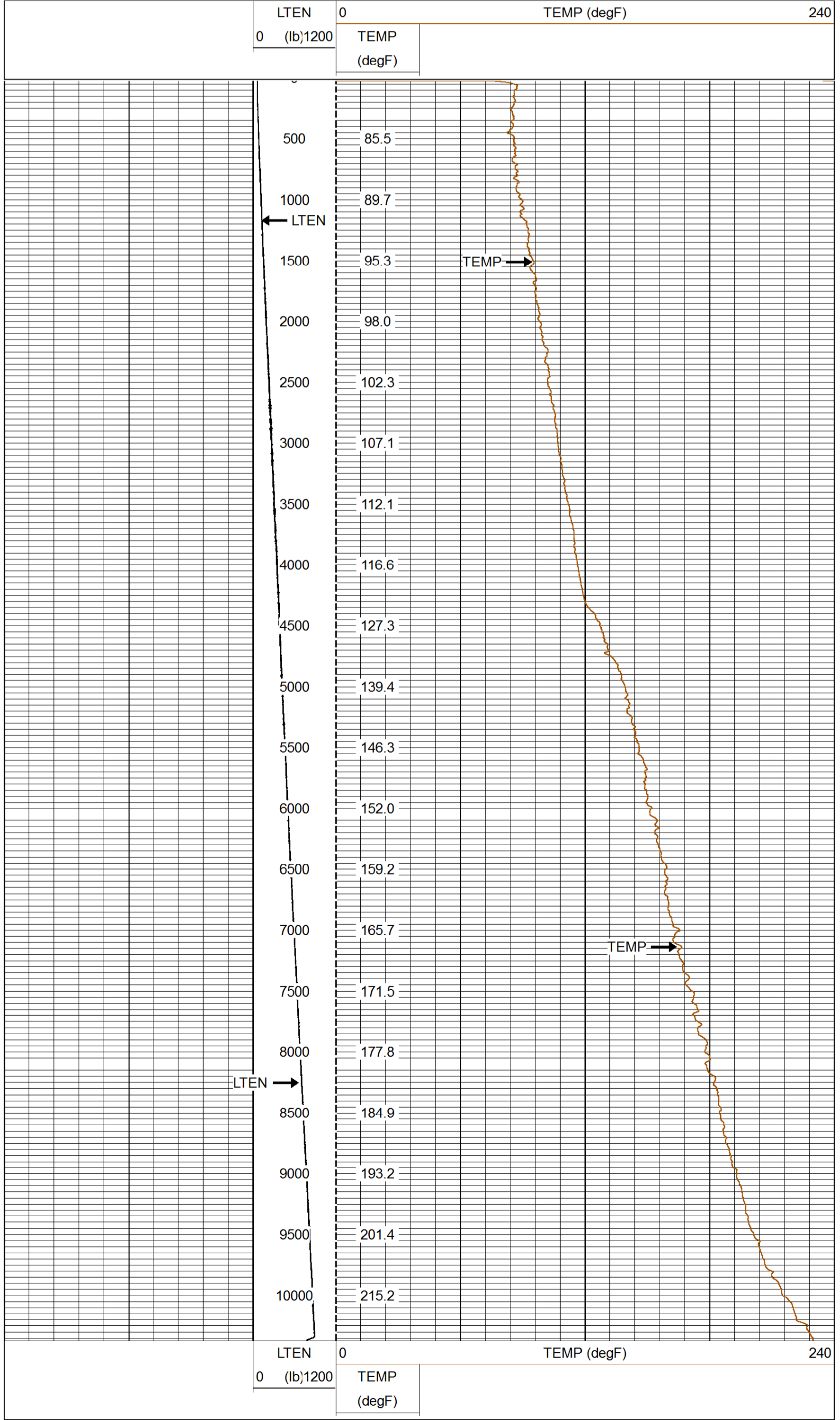
**MAIN PASS 5" = 100'**

**CSG PSI = STATIC**



**QUICK LOOK PASS**

Database File: 032114\_wpx\_ner\_44\_32.db  
 Dataset Pathname: main/pass2.1  
 Presentation Format: rmtmp\_q  
 Dataset Creation: Fri Mar 21 18:21:40 2014 by Calc SCH 120430  
 Charted by: Depth in Feet scaled 1:10000



Company: WPIX ENERGY LLC.  
 Well: NER 44-32  
 Field: RULISON  
 County: GARFIELD  
 State: COLORADO