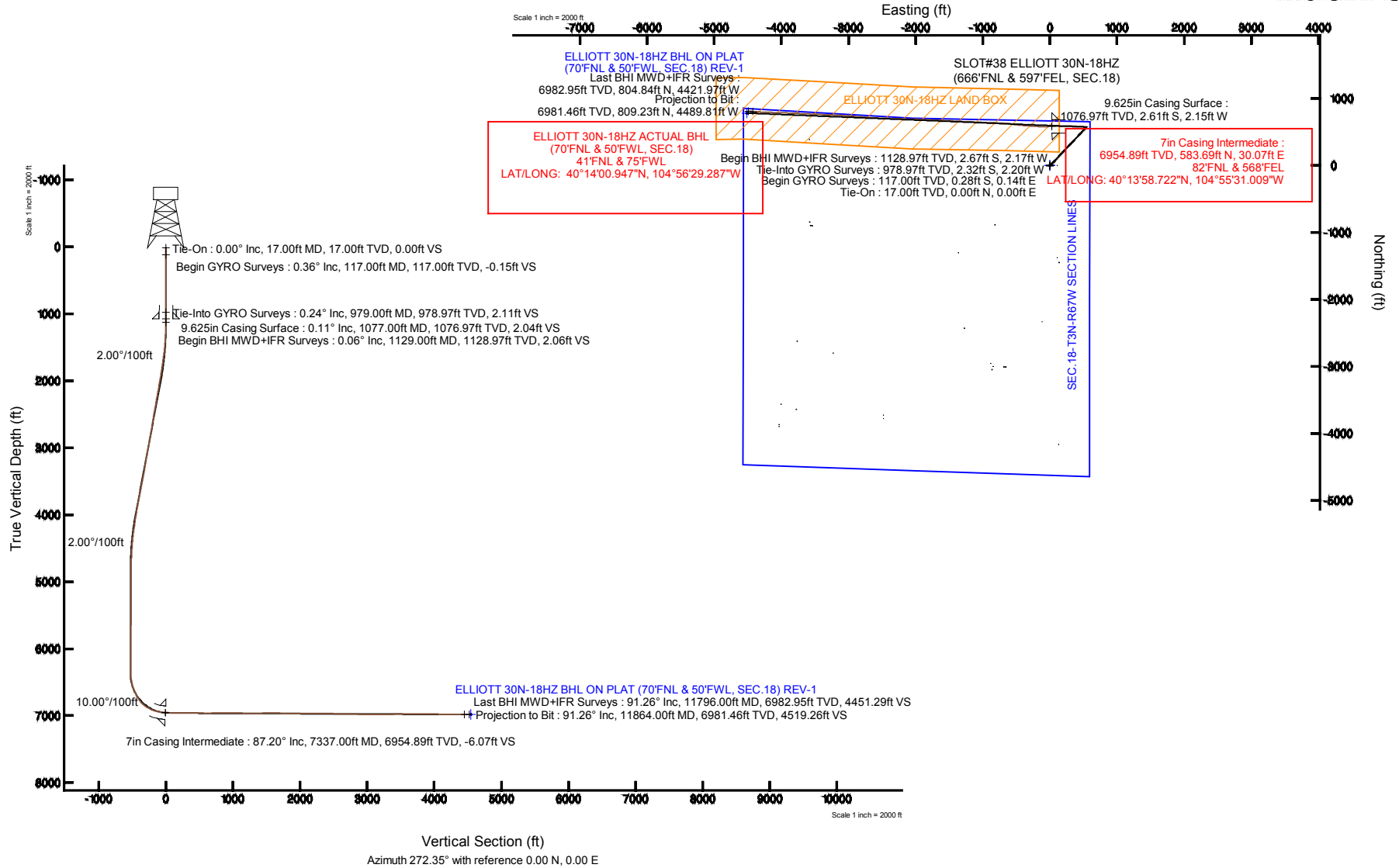


KERR-MCGEE OIL & GAS ONSHORE LP

Location: COLORADO Slot: SLOT#38 ELLIOTT 30N-18HZ (666'FNL & 597'FEL, SEC.18)
 Field: WELD COUNTY (KERR MCGEE) Well: ELLIOTT 30N-18HZ
 Facility: SEC.18-T3N-R67W Wellbore: ELLIOTT 30N-18HZ PWB

Plot reference wellpath is ELLIOTT 30N-18HZ (REV-A.0) PWB

True vertical depths are referenced to XTREME 8 (17KB) (RKB)	Grid System: NAD83 / Lambert Colorado SP, Northern Zone (501), US feet
Measured depths are referenced to XTREME 8 (17KB) (RKB)	North Reference: True north
XTREME 8 (17KB) (RKB) to Mean Sea Level: 4853 feet	Scale: True distance
Mean Sea Level to Mud line (At Slot: SLOT#38 ELLIOTT 30N-18HZ (666'FNL & 597'FEL, SEC.18): 0 feet	Depths are in feet
Coordinates are in feet referenced to Slot	Created by: precain on 21/May/2014



REFERENCE WELLPATH IDENTIFICATION			
Operator	KERR-MCGEE OIL & GAS ONSHORE LP	Slot	SLOT#38 ELLIOTT 30N-18HZ (666'FNL & 597'FEL, SEC.18)
Area	COLORADO	Well	ELLIOTT 30N-18HZ
Field	WELD COUNTY (KERR MCGEE)	Wellbore	ELLIOTT 30N-18HZ AWP
Facility	SEC.18-T3N-R67W		

REPORT SETUP INFORMATION			
Projection System	NAD83 / Lambert Colorado SP, Northern Zone (501), US feet	Software System	WellArchitect® 4.0.0
North Reference	True	User	Precain
Scale	0.999957	Report Generated	21/May/2014 at 10:38
Convergence at slot	n/a	Database/Source file	WellArchitectDB/ELLIOTT_30N-18HZ_AWP.xml

WELLPATH LOCATION						
	Local coordinates		Grid coordinates		Geographic coordinates	
	North[ft]	East[ft]	Easting[US ft]	Northing[US ft]	Latitude	Longitude
Slot Location	1204.56	2655.89	3160432.31	1327652.08	40°13'52.954"N	104°55'31.397"W
Facility Reference Pt			3157784.27	1326430.67	40°13'41.052"N	104°56'05.640"W
Field Reference Pt			3197771.84	1268891.29	40°04'09.600"N	104°47'36.000"W

WELLPATH DATUM			
Calculation method	Minimum curvature	XTREME 8 (17'KB) (RKB) to Installation Vertical Datum	4853.00ft
Horizontal Reference Pt	Slot	XTREME 8 (17'KB) (RKB) to Mean Sea Level	4853.00ft
Vertical Reference Pt	XTREME 8 (17'KB) (RKB)	XTREME 8 (17'KB) (RKB) to Mud Line at Slot (SLOT#38 ELLIOTT 30N-18HZ (666'FNL & 597'FEL, SEC.18))	4853.00ft
MD Reference Pt	XTREME 8 (17'KB) (RKB)	Section Origin	N 0.00, E 0.00 ft
Field Vertical Reference	Mean Sea Level	Section Azimuth	272.35°

REFERENCE WELLPATH IDENTIFICATION			
Operator	KERR-MCGEE OIL & GAS ONSHORE LP	Slot	SLOT#38 ELLIOTT 30N-18HZ (666'FNL & 597'FEL, SEC.18)
Area	COLORADO	Well	ELLIOTT 30N-18HZ
Field	WELD COUNTY (KERR MCGEE)	Wellbore	ELLIOTT 30N-18HZ AWP
Facility	SEC.18-T3N-R67W		

WELLPATH DATA (143 stations) † = interpolated/extrapolated station

MD [ft]	Inclination [°]	Azimuth [°]	TVD [ft]	Vert Sect [ft]	North [ft]	East [ft]	Latitude	Longitude	DLS [°/100ft]	Comments
0.00†	0.000	153.210	0.00	0.00	0.00	0.00	40°13'52.954"N	104°55'31.397"W	0.00	
17.00	0.000	153.210	17.00	0.00	0.00	0.00	40°13'52.954"N	104°55'31.397"W	0.00	Tie-On
117.00	0.360	153.210	117.00	-0.15	-0.28	0.14	40°13'52.951"N	104°55'31.395"W	0.36	Begin GYRO Surveys
217.00	0.270	111.550	217.00	-0.53	-0.65	0.50	40°13'52.948"N	104°55'31.391"W	0.24	
317.00	0.190	90.970	317.00	-0.92	-0.74	0.89	40°13'52.947"N	104°55'31.386"W	0.11	
417.00	0.290	314.640	417.00	-0.90	-0.56	0.87	40°13'52.948"N	104°55'31.386"W	0.45	
517.00	0.510	278.300	516.99	-0.27	-0.32	0.25	40°13'52.951"N	104°55'31.394"W	0.33	
617.00	0.620	262.960	616.99	0.71	-0.32	-0.72	40°13'52.951"N	104°55'31.406"W	0.19	
717.00	0.680	245.730	716.98	1.78	-0.63	-1.80	40°13'52.948"N	104°55'31.420"W	0.20	
817.00	0.500	196.010	816.98	2.41	-1.30	-2.46	40°13'52.941"N	104°55'31.429"W	0.52	
917.00	0.420	144.600	916.98	2.29	-2.01	-2.37	40°13'52.934"N	104°55'31.428"W	0.41	
979.00	0.240	163.100	978.97	2.11	-2.32	-2.20	40°13'52.931"N	104°55'31.425"W	0.33	Tie-Into GYRO Surveys
1129.00	0.060	229.050	1128.97	2.06	-2.67	-2.17	40°13'52.928"N	104°55'31.425"W	0.15	Begin BHI MWD+IFR Surveys
1221.00	1.360	64.480	1220.97	1.13	-2.24	-1.22	40°13'52.932"N	104°55'31.413"W	1.54	
1315.00	3.360	44.360	1314.88	-1.70	0.21	1.71	40°13'52.956"N	104°55'31.375"W	2.27	
1407.00	5.850	47.650	1406.58	-6.84	5.30	7.06	40°13'53.006"N	104°55'31.306"W	2.72	
1499.00	7.510	53.800	1497.95	-14.87	12.01	15.38	40°13'53.073"N	104°55'31.199"W	1.96	
1591.00	9.190	55.140	1588.97	-25.43	19.76	26.26	40°13'53.149"N	104°55'31.058"W	1.84	
1701.00	10.700	52.120	1697.32	-40.22	31.05	41.53	40°13'53.261"N	104°55'30.862"W	1.45	
1793.00	11.620	47.050	1787.58	-53.26	42.61	55.05	40°13'53.375"N	104°55'30.687"W	1.46	
1884.00	13.380	45.800	1876.42	-66.94	56.20	69.31	40°13'53.509"N	104°55'30.503"W	1.96	
1976.00	14.700	42.620	1965.67	-81.81	72.21	84.85	40°13'53.668"N	104°55'30.303"W	1.66	
2068.00	15.640	39.000	2054.47	-96.76	90.44	100.56	40°13'53.848"N	104°55'30.101"W	1.45	
2159.00	16.250	38.310	2141.96	-111.55	109.96	116.17	40°13'54.041"N	104°55'29.899"W	0.70	
2251.00	17.200	38.340	2230.07	-127.10	130.73	132.59	40°13'54.246"N	104°55'29.688"W	1.03	
2343.00	16.750	38.470	2318.06	-142.91	151.78	149.27	40°13'54.454"N	104°55'29.472"W	0.49	
2434.00	15.720	41.780	2405.43	-158.47	171.24	165.64	40°13'54.646"N	104°55'29.261"W	1.52	
2526.00	14.650	44.030	2494.22	-174.12	188.90	182.03	40°13'54.821"N	104°55'29.050"W	1.33	
2617.00	14.140	43.240	2582.36	-189.05	205.27	197.65	40°13'54.982"N	104°55'28.849"W	0.60	
2709.00	13.680	41.310	2671.67	-203.24	221.63	212.53	40°13'55.144"N	104°55'28.657"W	0.71	
2800.00	14.900	43.880	2759.85	-217.77	238.14	227.74	40°13'55.307"N	104°55'28.461"W	1.51	
2892.00	16.030	44.770	2848.52	-234.18	255.69	244.89	40°13'55.481"N	104°55'28.240"W	1.26	
2984.00	14.580	43.150	2937.25	-250.31	273.15	261.75	40°13'55.653"N	104°55'28.022"W	1.64	
3074.00	15.370	42.040	3024.20	-265.33	290.28	277.49	40°13'55.822"N	104°55'27.819"W	0.93	
3165.00	15.870	43.410	3111.84	-281.20	308.27	294.11	40°13'56.000"N	104°55'27.605"W	0.68	
3257.00	14.530	42.350	3200.62	-296.88	325.94	310.53	40°13'56.175"N	104°55'27.393"W	1.49	
3343.00	14.450	43.370	3283.88	-310.86	341.71	325.17	40°13'56.331"N	104°55'27.204"W	0.31	
3428.00	14.610	43.510	3366.16	-324.87	357.20	339.83	40°13'56.484"N	104°55'27.015"W	0.19	
3513.00	15.360	45.550	3448.27	-339.63	372.86	355.25	40°13'56.639"N	104°55'26.817"W	1.08	
3598.00	16.030	44.120	3530.10	-355.16	389.17	371.46	40°13'56.800"N	104°55'26.608"W	0.91	
3683.00	16.480	44.230	3611.70	-371.02	406.23	388.04	40°13'56.968"N	104°55'26.394"W	0.53	
3769.00	16.260	44.390	3694.22	-387.23	423.57	404.97	40°13'57.140"N	104°55'26.176"W	0.26	
3854.00	16.350	43.300	3775.80	-403.04	440.78	421.50	40°13'57.310"N	104°55'25.962"W	0.38	
3939.00	15.330	42.620	3857.57	-418.14	457.76	437.31	40°13'57.478"N	104°55'25.759"W	1.22	
4025.00	15.160	42.180	3940.54	-432.69	474.46	452.56	40°13'57.643"N	104°55'25.562"W	0.24	

REFERENCE WELLPATH IDENTIFICATION				
Operator	KERR-MCGEE OIL & GAS ONSHORE LP		Slot	SLOT#38 ELLIOTT 30N-18HZ (666'FNL & 597'FEL, SEC.18)
Area	COLORADO		Well	ELLIOTT 30N-18HZ
Field	WELD COUNTY (KERR MCGEE)		Wellbore	ELLIOTT 30N-18HZ AWP
Facility	SEC.18-T3N-R67W			

WELLPATH DATA (143 stations) † = interpolated/extrapolated station										
MD [ft]	Inclination [°]	Azimuth [°]	TVD [ft]	Vert Sect [ft]	North [ft]	East [ft]	Latitude	Longitude	DLS [°/100ft]	Comments
4110.00	13.680	41.170	4022.86	-446.11	490.26	466.64	40°13'57.799"N	104°55'25.380"W	1.77	
4195.00	14.130	39.950	4105.37	-458.74	505.78	479.92	40°13'57.952"N	104°55'25.209"W	0.63	
4280.00	13.540	38.880	4187.91	-470.99	521.48	492.83	40°13'58.107"N	104°55'25.043"W	0.76	
4366.00	12.330	40.080	4271.72	-482.60	536.35	505.06	40°13'58.254"N	104°55'24.885"W	1.44	
4451.00	9.340	42.280	4355.20	-492.58	548.40	515.54	40°13'58.373"N	104°55'24.750"W	3.55	
4536.00	6.720	44.690	4439.36	-500.36	557.04	523.68	40°13'58.459"N	104°55'24.645"W	3.11	
4621.00	4.950	45.670	4523.91	-506.23	563.13	529.80	40°13'58.519"N	104°55'24.566"W	2.09	
4707.00	4.050	43.350	4609.65	-510.77	567.94	534.54	40°13'58.566"N	104°55'24.505"W	1.07	
4792.00	2.640	49.290	4694.50	-514.16	571.40	538.09	40°13'58.600"N	104°55'24.459"W	1.71	
4877.00	1.060	70.870	4779.46	-516.33	572.93	540.31	40°13'58.616"N	104°55'24.430"W	2.00	
4962.00	0.710	228.550	4864.45	-516.68	572.84	540.66	40°13'58.615"N	104°55'24.426"W	2.04	
5047.00	1.100	236.080	4949.44	-515.64	572.04	539.59	40°13'58.607"N	104°55'24.440"W	0.48	
5133.00	0.090	102.180	5035.44	-515.04	571.56	538.97	40°13'58.602"N	104°55'24.448"W	1.35	
5218.00	0.450	85.620	5120.43	-515.44	571.57	539.37	40°13'58.602"N	104°55'24.443"W	0.43	
5389.00	0.250	220.490	5291.43	-515.88	571.34	539.80	40°13'58.600"N	104°55'24.437"W	0.38	
5559.00	0.740	83.320	5461.43	-516.73	571.18	540.65	40°13'58.598"N	104°55'24.426"W	0.55	
5730.00	0.930	75.340	5632.41	-519.15	571.66	543.09	40°13'58.603"N	104°55'24.395"W	0.13	
5815.00	0.820	57.770	5717.40	-520.31	572.16	544.27	40°13'58.608"N	104°55'24.379"W	0.34	
5900.00	0.740	61.580	5802.39	-521.28	572.75	545.27	40°13'58.614"N	104°55'24.367"W	0.11	
6071.00	0.440	43.710	5973.38	-522.66	573.75	546.69	40°13'58.624"N	104°55'24.348"W	0.20	
6241.00	0.410	51.350	6143.38	-523.55	574.60	547.62	40°13'58.632"N	104°55'24.336"W	0.04	
6374.00	0.320	32.500	6276.38	-524.10	575.21	548.19	40°13'58.638"N	104°55'24.329"W	0.11	
6411.00	0.410	23.520	6313.38	-524.20	575.42	548.30	40°13'58.640"N	104°55'24.328"W	0.29	
6453.00	1.320	266.100	6355.37	-523.77	575.52	547.87	40°13'58.641"N	104°55'24.333"W	3.70	
6496.00	4.220	269.220	6398.32	-521.70	575.47	545.80	40°13'58.641"N	104°55'24.360"W	6.75	
6538.00	7.450	270.130	6440.09	-517.43	575.45	541.53	40°13'58.641"N	104°55'24.415"W	7.69	
6581.00	10.520	273.270	6482.56	-510.72	575.69	534.82	40°13'58.643"N	104°55'24.501"W	7.23	
6624.00	13.730	274.030	6524.60	-501.69	576.27	525.81	40°13'58.649"N	104°55'24.617"W	7.47	
6666.00	16.650	273.390	6565.13	-490.69	576.97	514.83	40°13'58.656"N	104°55'24.759"W	6.96	
6709.00	20.080	273.030	6605.93	-477.15	577.73	501.30	40°13'58.663"N	104°55'24.933"W	7.98	
6752.00	23.220	273.310	6645.89	-461.29	578.61	485.46	40°13'58.672"N	104°55'25.138"W	7.31	
6794.00	26.680	273.810	6683.97	-443.58	579.71	467.78	40°13'58.683"N	104°55'25.366"W	8.25	
6836.00	30.250	273.260	6720.88	-423.57	580.94	447.81	40°13'58.695"N	104°55'25.623"W	8.52	
6878.00	34.720	272.310	6756.30	-401.02	582.03	425.28	40°13'58.706"N	104°55'25.914"W	10.71	
6921.00	40.070	271.440	6790.45	-374.91	582.87	399.19	40°13'58.714"N	104°55'26.250"W	12.50	
6964.00	45.790	270.480	6821.92	-345.65	583.35	369.92	40°13'58.719"N	104°55'26.627"W	13.39	
7006.00	51.450	269.880	6849.68	-314.17	583.44	338.42	40°13'58.719"N	104°55'27.034"W	13.52	
7049.00	57.450	270.430	6874.67	-279.23	583.54	303.45	40°13'58.720"N	104°55'27.484"W	13.99	
7092.00	63.580	270.530	6895.82	-241.83	583.85	266.04	40°13'58.724"N	104°55'27.967"W	14.26	
7134.00	68.180	270.300	6912.98	-203.53	584.13	227.72	40°13'58.726"N	104°55'28.461"W	10.96	
7177.00	72.790	270.190	6927.34	-163.04	584.30	187.20	40°13'58.728"N	104°55'28.983"W	10.72	
7219.00	76.170	270.220	6938.58	-122.61	584.45	146.74	40°13'58.729"N	104°55'29.505"W	8.05	
7262.00	80.560	269.570	6947.25	-80.54	584.37	104.63	40°13'58.729"N	104°55'30.048"W	10.32	
7287.00	83.310	269.600	6950.75	-55.82	584.19	79.88	40°13'58.727"N	104°55'30.367"W	11.00	
7337.00†	87.199	269.250	6954.89	-6.07	583.69	30.07	40°13'58.722"N	104°55'31.009"W	7.81	7" Casing Point

REFERENCE WELLPATH IDENTIFICATION			
Operator	KERR-MCGEE OIL & GAS ONSHORE LP	Slot	SLOT#38 ELLIOTT 30N-18HZ (666'FNL & 597'FEL, SEC.18)
Area	COLORADO	Well	ELLIOTT 30N-18HZ
Field	WELD COUNTY (KERR MCGEE)	Wellbore	ELLIOTT 30N-18HZ AWB
Facility	SEC.18-T3N-R67W		

WELLPATH DATA (143 stations)

MD [ft]	Inclination [°]	Azimuth [°]	TVD [ft]	Vert Sect [ft]	North [ft]	East [ft]	Latitude	Longitude	DLS [°/100ft]	Comments
7373.00	90.000	269.000	6955.77	29.86	583.14	-5.92	40°13'58.717"N	104°55'31.473"W	7.81	
7458.00	89.040	269.400	6956.48	114.73	581.95	-90.90	40°13'58.705"N	104°55'32.569"W	1.22	
7544.00	88.980	271.920	6957.97	200.67	582.94	-176.88	40°13'58.715"N	104°55'33.678"W	2.93	
7629.00	88.460	273.870	6959.86	285.64	587.23	-261.74	40°13'58.757"N	104°55'34.772"W	2.37	
7714.00	89.900	275.080	6961.08	370.57	593.86	-346.47	40°13'58.823"N	104°55'35.864"W	2.21	
7800.00	89.410	275.250	6961.60	456.47	601.61	-432.12	40°13'58.899"N	104°55'36.969"W	0.60	
7885.00	88.950	276.110	6962.82	541.31	610.02	-516.69	40°13'58.982"N	104°55'38.059"W	1.15	
7970.00	90.210	275.910	6963.44	626.14	618.92	-601.22	40°13'59.070"N	104°55'39.149"W	1.50	
8055.00	90.460	274.920	6962.94	711.01	626.94	-685.84	40°13'59.149"N	104°55'40.240"W	1.20	
8140.00	90.240	272.570	6962.42	795.98	632.49	-770.65	40°13'59.204"N	104°55'41.333"W	2.78	
8226.00	90.950	272.180	6961.53	881.98	636.05	-856.57	40°13'59.239"N	104°55'42.441"W	0.94	
8311.00	89.630	272.200	6961.10	966.97	639.30	-941.51	40°13'59.271"N	104°55'43.536"W	1.55	
8396.00	89.190	272.570	6961.97	1051.97	642.84	-1026.43	40°13'59.306"N	104°55'44.631"W	0.68	
8481.00	89.320	272.790	6963.08	1136.96	646.81	-1111.33	40°13'59.346"N	104°55'45.726"W	0.30	
8567.00	89.720	273.160	6963.80	1222.95	651.28	-1197.21	40°13'59.390"N	104°55'46.833"W	0.63	
8652.00	90.210	272.830	6963.85	1307.94	655.72	-1282.09	40°13'59.433"N	104°55'47.928"W	0.70	
8737.00	90.360	273.020	6963.43	1392.94	660.05	-1366.98	40°13'59.476"N	104°55'49.022"W	0.28	
8822.00	90.240	273.300	6962.98	1477.93	664.74	-1451.85	40°13'59.522"N	104°55'50.117"W	0.36	
8907.00	90.240	272.730	6962.63	1562.92	669.21	-1536.73	40°13'59.567"N	104°55'51.211"W	0.67	
8993.00	89.560	272.200	6962.78	1648.92	672.91	-1622.65	40°13'59.603"N	104°55'52.319"W	1.00	
9078.00	89.410	272.530	6963.54	1733.92	676.42	-1707.58	40°13'59.638"N	104°55'53.414"W	0.43	
9163.00	89.780	272.070	6964.14	1818.92	679.83	-1792.51	40°13'59.671"N	104°55'54.509"W	0.69	
9249.00	90.000	272.710	6964.31	1904.91	683.41	-1878.43	40°13'59.707"N	104°55'55.617"W	0.79	
9334.00	89.960	272.410	6964.34	1989.91	687.21	-1963.34	40°13'59.744"N	104°55'56.712"W	0.36	
9419.00	89.960	271.540	6964.40	2074.91	690.14	-2048.29	40°13'59.773"N	104°55'57.807"W	1.02	
9504.00	88.490	271.170	6965.55	2159.89	692.15	-2133.26	40°13'59.793"N	104°55'58.902"W	1.78	
9589.00	90.150	272.140	6966.56	2244.87	694.60	-2218.21	40°13'59.817"N	104°56'00.000"W	2.26	
9674.00	88.300	272.030	6967.71	2329.86	697.70	-2303.15	40°13'59.848"N	104°56'01.093"W	2.18	
9759.00	89.560	272.490	6969.29	2414.84	701.05	-2388.06	40°13'59.881"N	104°56'02.188"W	1.58	
9845.00	88.450	272.520	6970.79	2500.83	704.81	-2473.97	40°13'59.918"N	104°56'03.295"W	1.29	
9930.00	89.070	273.190	6972.63	2585.80	709.04	-2558.84	40°13'59.959"N	104°56'04.390"W	1.07	
10015.00	88.730	272.980	6974.26	2670.78	713.61	-2643.70	40°14'00.004"N	104°56'05.484"W	0.47	
10100.00	88.920	274.160	6976.00	2755.74	718.90	-2728.52	40°14'00.057"N	104°56'06.577"W	1.41	
10185.00	88.920	274.130	6977.60	2840.69	725.05	-2813.28	40°14'00.117"N	104°56'07.670"W	0.04	
10270.00	89.220	274.070	6978.98	2925.64	731.12	-2898.05	40°14'00.177"N	104°56'08.763"W	0.36	
10356.00	89.320	274.370	6980.08	3011.58	737.45	-2983.81	40°14'00.240"N	104°56'09.869"W	0.37	
10441.00	89.440	274.270	6981.00	3096.53	743.85	-3068.56	40°14'00.303"N	104°56'10.962"W	0.18	
10526.00	90.270	273.590	6981.21	3181.49	749.68	-3153.36	40°14'00.360"N	104°56'12.055"W	1.26	
10611.00	91.200	272.090	6980.12	3266.48	753.89	-3238.25	40°14'00.402"N	104°56'13.150"W	2.08	
10696.00	90.580	272.680	6978.80	3351.47	757.43	-3323.16	40°14'00.437"N	104°56'14.245"W	1.01	
10782.00	91.130	272.990	6977.52	3437.46	761.68	-3409.05	40°14'00.479"N	104°56'15.352"W	0.73	
10867.00	89.260	272.160	6977.23	3522.45	765.50	-3493.96	40°14'00.516"N	104°56'16.447"W	2.41	
10952.00	90.300	272.260	6977.56	3607.45	768.78	-3578.89	40°14'00.548"N	104°56'17.542"W	1.23	
11037.00	90.860	272.760	6976.70	3692.44	772.50	-3663.81	40°14'00.585"N	104°56'18.637"W	0.88	
11208.00	90.210	272.370	6975.10	3863.43	780.15	-3834.63	40°14'00.660"N	104°56'20.839"W	0.44	

REFERENCE WELLPATH IDENTIFICATION			
Operator	KERR-MCGEE OIL & GAS ONSHORE LP	Slot	SLOT#38 ELLIOTT 30N-18HZ (666'FNL & 597'FEL, SEC.18)
Area	COLORADO	Well	ELLIOTT 30N-18HZ
Field	WELD COUNTY (KERR MCGEE)	Wellbore	ELLIOTT 30N-18HZ AWB
Facility	SEC.18-T3N-R67W		

WELLPATH DATA (143 stations)										
MD [ft]	Inclination [°]	Azimuth [°]	TVD [ft]	Vert Sect [ft]	North [ft]	East [ft]	Latitude	Longitude	DLS [°/100ft]	Comments
11293.00	89.070	271.720	6975.63	3948.43	783.18	-3919.57	40°14'00.690"N	104°56'21.935"W	1.54	
11378.00	88.520	271.940	6977.42	4033.41	785.90	-4004.51	40°14'00.717"N	104°56'23.030"W	0.70	
11463.00	88.120	272.150	6979.91	4118.37	788.93	-4089.41	40°14'00.747"N	104°56'24.125"W	0.53	
11549.00	88.670	272.280	6982.32	4204.33	792.25	-4175.32	40°14'00.779"N	104°56'25.232"W	0.66	
11634.00	89.410	272.520	6983.74	4289.32	795.81	-4260.23	40°14'00.815"N	104°56'26.327"W	0.92	
11719.00	90.270	273.310	6983.98	4374.32	800.13	-4345.12	40°14'00.857"N	104°56'27.422"W	1.37	
11796.00	91.260	273.700	6982.95	4451.29	804.84	-4421.97	40°14'00.903"N	104°56'28.412"W	1.38	Last BHI MWD+IFR Surveys
11864.00	91.260	273.700	6981.46	4519.26	809.23	-4489.81	40°14'00.947"N	104°56'29.287"W	0.00	Projection to Bit

HOLE & CASING SECTIONS - Ref Wellbore: ELLIOTT 30N-18HZ AWB Ref Wellpath: ELLIOTT 30N-18HZ AWP									
String/Diameter	Start MD [ft]	End MD [ft]	Interval [ft]	Start TVD [ft]	End TVD [ft]	Start N/S [ft]	Start E/W [ft]	End N/S [ft]	End E/W [ft]
13.5in Open Hole	17.00	1083.00	1066.00	17.00	1082.97	0.00	0.00	-2.62	-2.15
9.625in Casing Surface	17.00	1077.00	1060.00	17.00	1076.97	0.00	0.00	-2.61	-2.15
8.75in Open Hole	1083.00	7347.00	6264.00	1082.97	6955.31	-2.62	-2.15	583.55	20.08
7in Casing Intermediate	17.00	7337.00	7320.00	17.00	6954.89	0.00	0.00	583.69	30.07
6.125in Open Hole	7347.00	11864.00	4517.00	6955.31	6981.46	583.55	20.08	809.23	-4489.81

TARGETS									
Name	MD [ft]	TVD [ft]	North [ft]	East [ft]	Grid East [US ft]	Grid North [US ft]	Latitude	Longitude	Shape
SEC.18-T3N-R67W SECTION LINES		0.00	0.00	0.00	3160432.31	1327652.08	40°13'52.954"N	104°55'31.397"W	polygon
ELLIOTT 30N-18HZ BHL ON PLAT (70'FNL & 50'FWL, SEC.18) REV-1		6983.00	781.80	-4514.20	3155913.34	1328404.57	40°14'00.676"N	104°56'29.602"W	point
ELLIOTT 30N-18HZ LAND BOX		6983.00	0.00	0.00	3160432.31	1327652.08	40°13'52.954"N	104°55'31.397"W	polygon

WELLPATH COMPOSITION - Ref Wellbore: ELLIOTT 30N-18HZ AWP Ref Wellpath: ELLIOTT 30N-18HZ AWP				
Start MD [ft]	End MD [ft]	Positional Uncertainty Model	Log Name/Comment	Wellbore
17.00	979.00	Generic gyro - continuous (Standard)	MS ENERGY SERVICES GYRO SURVEYS <117-979>	ELLIOTT 30N-18HZ AWB
979.00	7287.00	NaviTrak (IFR)	BHI MWD+IFR SURVEYS 8 3/4" HOLE <1129-7287>	ELLIOTT 30N-18HZ AWB
7287.00	11796.00	NaviTrak (IFR)	BHI MWD+IFR SURVEYS 61/8" HOLE <7373-9674>	ELLIOTT 30N-18HZ AWB
11796.00	11864.00	Blind Drilling (std)	Projection to bit	ELLIOTT 30N-18HZ AWB

Actual Wellpath Report

ELLIOTT 30N-18HZ AWP

Page 6 of 6

REFERENCE WELLPATH IDENTIFICATION			
Operator	KERR-MCGEE OIL & GAS ONSHORE LP	Slot	SLOT#38 ELLIOTT 30N-18HZ (666'FNL & 597'FEL, SEC.18)
Area	COLORADO	Well	ELLIOTT 30N-18HZ
Field	WELD COUNTY (KERR MCGEE)	Wellbore	ELLIOTT 30N-18HZ AWP
Facility	SEC.18-T3N-R67W		

WELLPATH COMMENTS					
MD [ft]	Inclination [°]	Azimuth [°]	TVD [ft]	Comment	
17.00	0.000	153.210	17.00	Tie-On	
117.00	0.360	153.210	117.00	Begin GYRO Surveys	
979.00	0.240	163.100	978.97	Tie-Into GYRO Surveys	
1129.00	0.060	229.050	1128.97	Begin BHI MWD+IFR Surveys	
7337.00	87.199	269.250	6954.89	7" Casing Point	
11796.00	91.260	273.700	6982.95	Last BHI MWD+IFR Surveys	
11864.00	91.260	273.700	6981.46	Projection to Bit	