

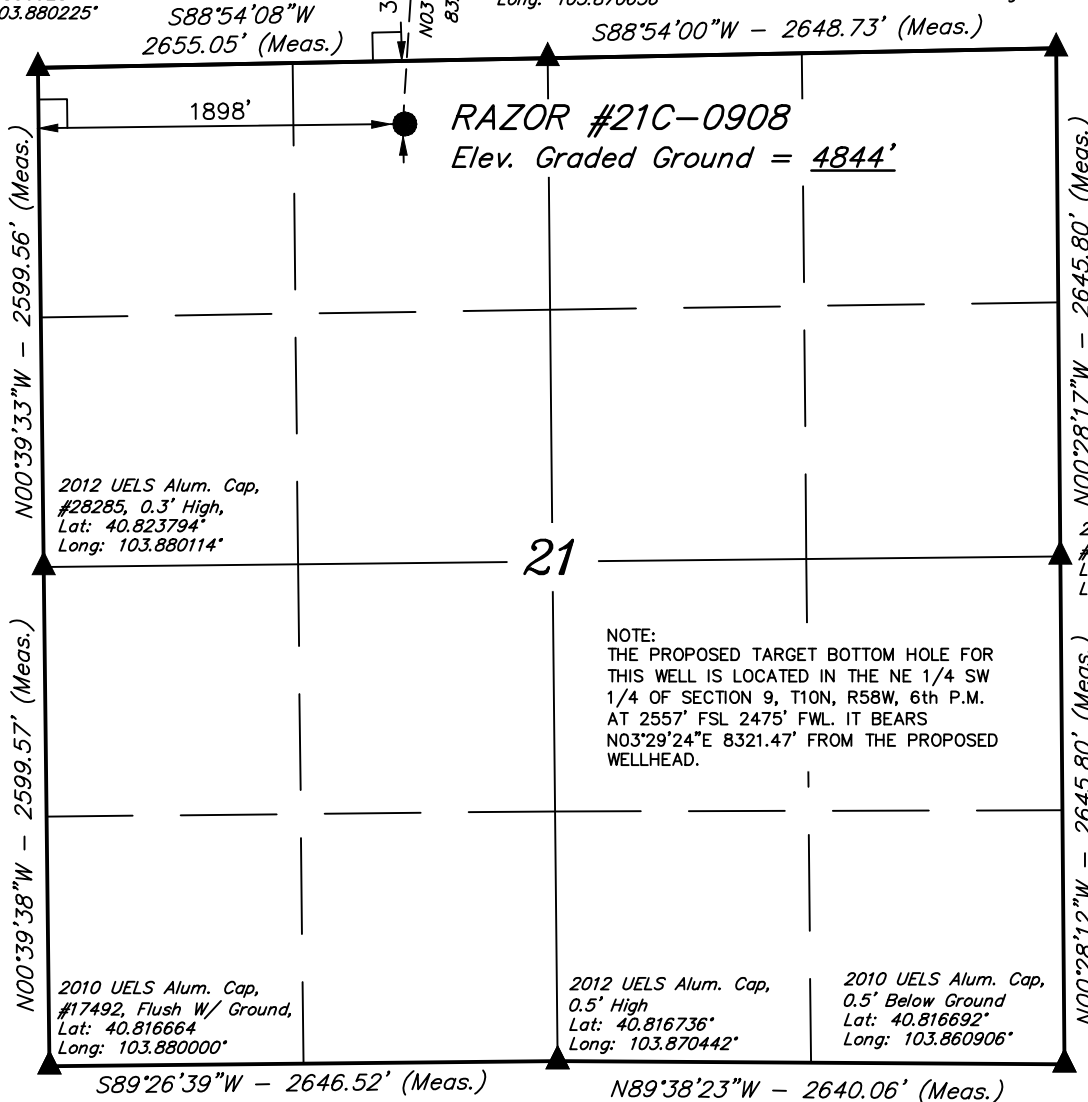
**T10N, R58W, 6th P.M.**

Target Bottom Hole

2011 UELS Alum.  
Cap, #17492  
Lat: 40.830928°  
Long: 103.880225°

2012 UELS Alum. Cap,  
#28285, 0.3' High,  
Lat: 40.831072°  
Long: 103.870636°

2012 UELS Alum.  
Cap, #28285,  
0.5' Below Ground,  
Lat: 40.831214°  
Long: 103.861069°



**WHITING OIL & GAS CORP.**

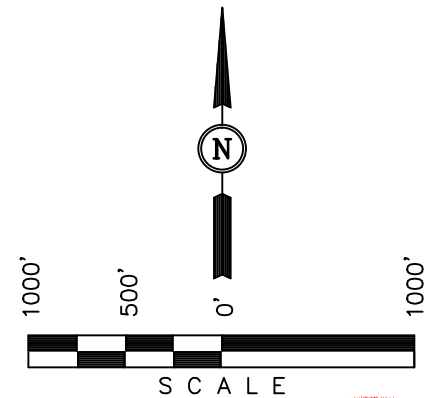
Well location, RAZOR #21C-0908, (SURFACE LOCATION), located as shown in the NE 1/4 NW 1/4 of Section 21, T10N, R58W, 6th P.M., Weld County, Colorado.

**BASIS OF ELEVATION**

SPOT ELEVATION LOCATED AT THE NORTHEAST CORNER OF SECTION 15, T9N, R58W, 6th P.M. TAKEN FROM THE GATEHOOK SPRING, QUADRANGLE, COLORADO, WELD COUNTY, 7.5 MINUTE QUAD (TOPOGRAPHIC MAP) PUBLISHED BY THE UNITED STATES DEPARTMENT OF THE INTERIOR, GEOLOGICAL SURVEY. SAID ELEVATION IS MARKED AS BEING 4679 FEET.

**BASIS OF BEARINGS**

BASIS OF BEARINGS IS A G.P.S. OBSERVATION.



**CERTIFICATE**

THIS IS TO CERTIFY THAT THE ABOVE PLAT WAS PREPARED FROM FIELD NOTES OF ACTUAL SURVEYS MADE BY ME OR UNDER MY SUPERVISION AND THAT THE SAME ARE TRUE AND CORRECT TO THE BEST OF MY KNOWLEDGE AND BELIEF.

REV.: 03-20-14 H.K.W.  
REV.: 03-05-14 H.K.W.  
REV.: 06-29-13 B.D.H.  
REV.: 04-10-13 J.W.

REGISTERED LAND SURVEYOR  
REGISTRATION NO. 28285  
STATE OF COLORADO  
03-25-14

**UINTAH ENGINEERING & LAND SURVEYING**  
85 SOUTH 200 EAST - VERNAL, UTAH 84078  
(435) 789-1017

**LEGEND:**

- └─┘ = 90° SYMBOL
- = PROPOSED WELLHEAD.
- ▲ = SECTION CORNERS LOCATED.

PDOP = 2.1

NAD 83 (SURFACE LOCATION)	
LATITUDE	= 40°49'48.46" (40.830128)
LONGITUDE	= 103°52'24.09" (103.873358)
NAD 27 (SURFACE LOCATION)	
LATITUDE	= 40°49'48.51" (40.830142)
LONGITUDE	= 103°52'22.28" (103.872856)

SCALE 1" = 1000'	DATE SURVEYED: 02-21-13	DATE DRAWN: 02-25-13
PARTY JEREMY HARRIS C.M. H.K.W.	REFERENCES G.L.O. PLAT	
WEATHER COLD	FILE	WHITING OIL & GAS CORP.

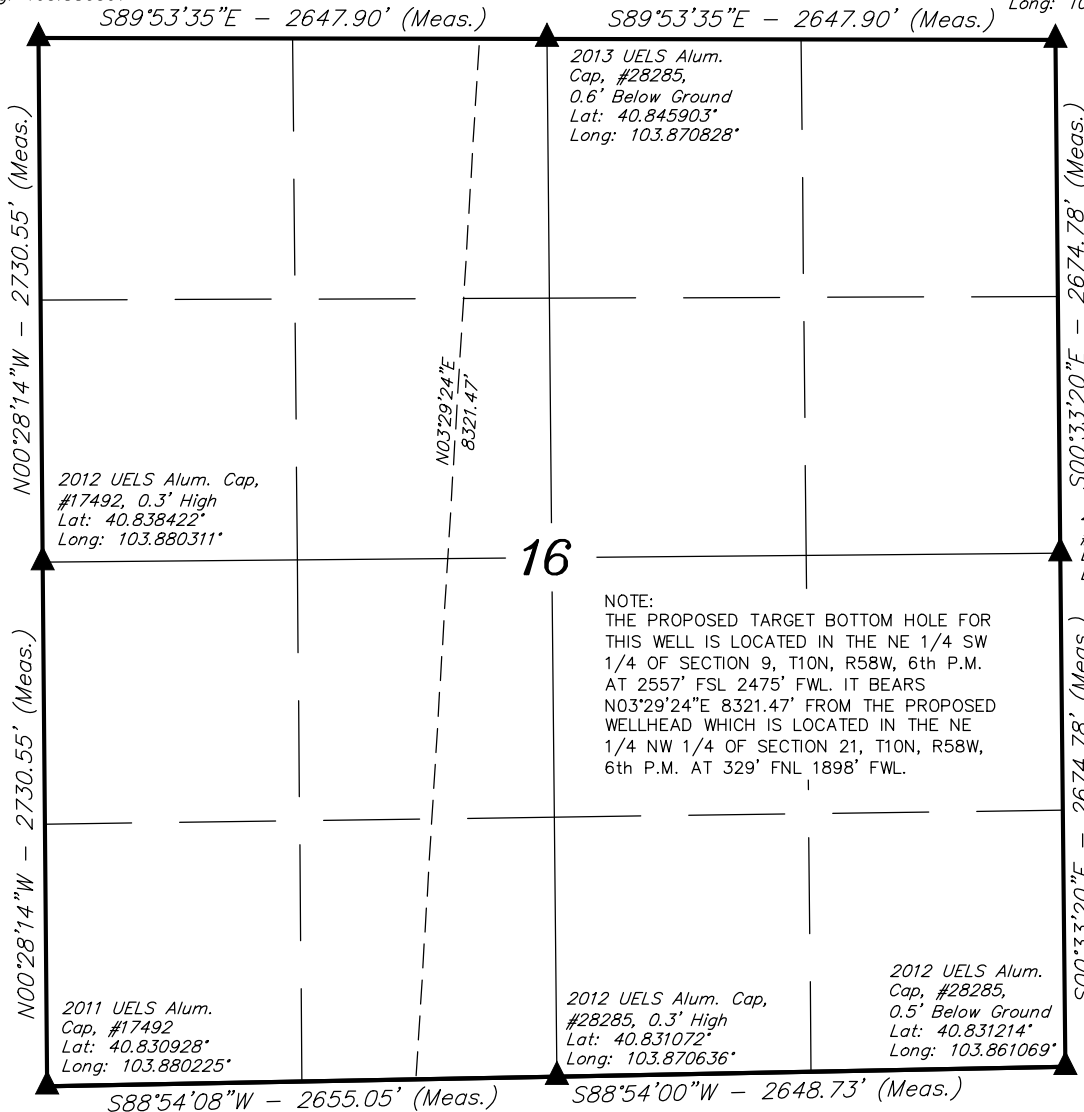
T10N, R58W, 6th P.M.

RAZOR #21C-0908

Target Bottom Hole

2011 UELS Alum. Cap,  
#17492, 0.5' Below Road  
Lat: 40.845914°  
Long: 103.880397°

2013 UELS Alum. Cap, #28285,  
0.3' High  
Lat: 40.845892°  
Long: 103.861261°



● RAZOR #21C-0908  
Surface Location

# LEGEND:

- └─┘ = 90° SYMBOL
- = PROPOSED WELLHEAD.
- ▲ = SECTION CORNERS LOCATED.

NAD 83 (TARGET BOTTOM HOLE)	NAD 83 (SURFACE LOCATION)
LATITUDE = 40°51'10.52" (40.852922)	LATITUDE = 40°49'48.46" (40.830128)
LONGITUDE = 103°52'17.54" (103.871539)	LONGITUDE = 103°52'24.09" (103.873358)
NAD 27 (TARGET BOTTOM HOLE)	NAD 27 (SURFACE LOCATION)
LATITUDE = 40°51'10.57" (40.852953)	LATITUDE = 40°49'48.51" (40.830142)
LONGITUDE = 103°52'15.73" (103.871036)	LONGITUDE = 103°52'22.28" (103.872856)

WHITING OIL & GAS CORP.

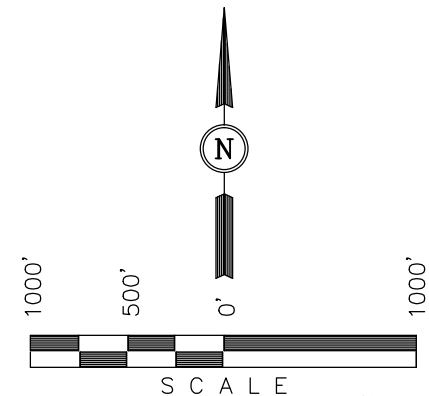
Well location, RAZOR #21C-0908, located in the NE 1/4 NW 1/4 of Section 21, T10N, R58W, 6th P.M., Weld County, Colorado.

## BASIS OF ELEVATION

SPOT ELEVATION LOCATED AT THE NORTHEAST CORNER OF SECTION 15, T9N, R58W, 6th P.M. TAKEN FROM THE GATEHOOK SPRING, QUADRANGLE, COLORADO, WELD COUNTY, 7.5 MINUTE QUAD (TOPOGRAPHIC MAP) PUBLISHED BY THE UNITED STATES DEPARTMENT OF THE INTERIOR, GEOLOGICAL SURVEY. SAID ELEVATION IS MARKED AS BEING 4679 FEET.

## BASIS OF BEARINGS

BASIS OF BEARINGS IS A G.P.S. OBSERVATION.



## CERTIFICATE

THIS IS TO CERTIFY THAT THE ABOVE PLAT WAS PREPARED FROM FIELD NOTES OF ACTUAL SURVEYS MADE BY ME OR UNDER MY SUPERVISION AND THAT THE SAME ARE TRUE AND CORRECT TO THE BEST OF MY KNOWLEDGE AND BELIEF.

REV.: 05-21-14 K.B.  
REV.: 03-20-14 H.K.W.  
REV.: 03-05-14 H.K.W.  
REV.: 06-29-13 B.D.H.

REGISTERED LAND SURVEYOR  
REGISTRATION NO. 28285  
STATE OF COLORADO

UINTAH ENGINEERING & LAND SURVEYING  
85 SOUTH 200 EAST - VERNAL, UTAH 84078  
(435) 789-1017

SCALE 1" = 1000'	DATE SURVEYED: 02-21-13	DATE DRAWN: 02-25-13
PARTY JEREMY HARRIS C.M. H.K.W.	REFERENCES G.L.O. PLAT	
WEATHER COLD	FILE	WHITING OIL & GAS CORP.

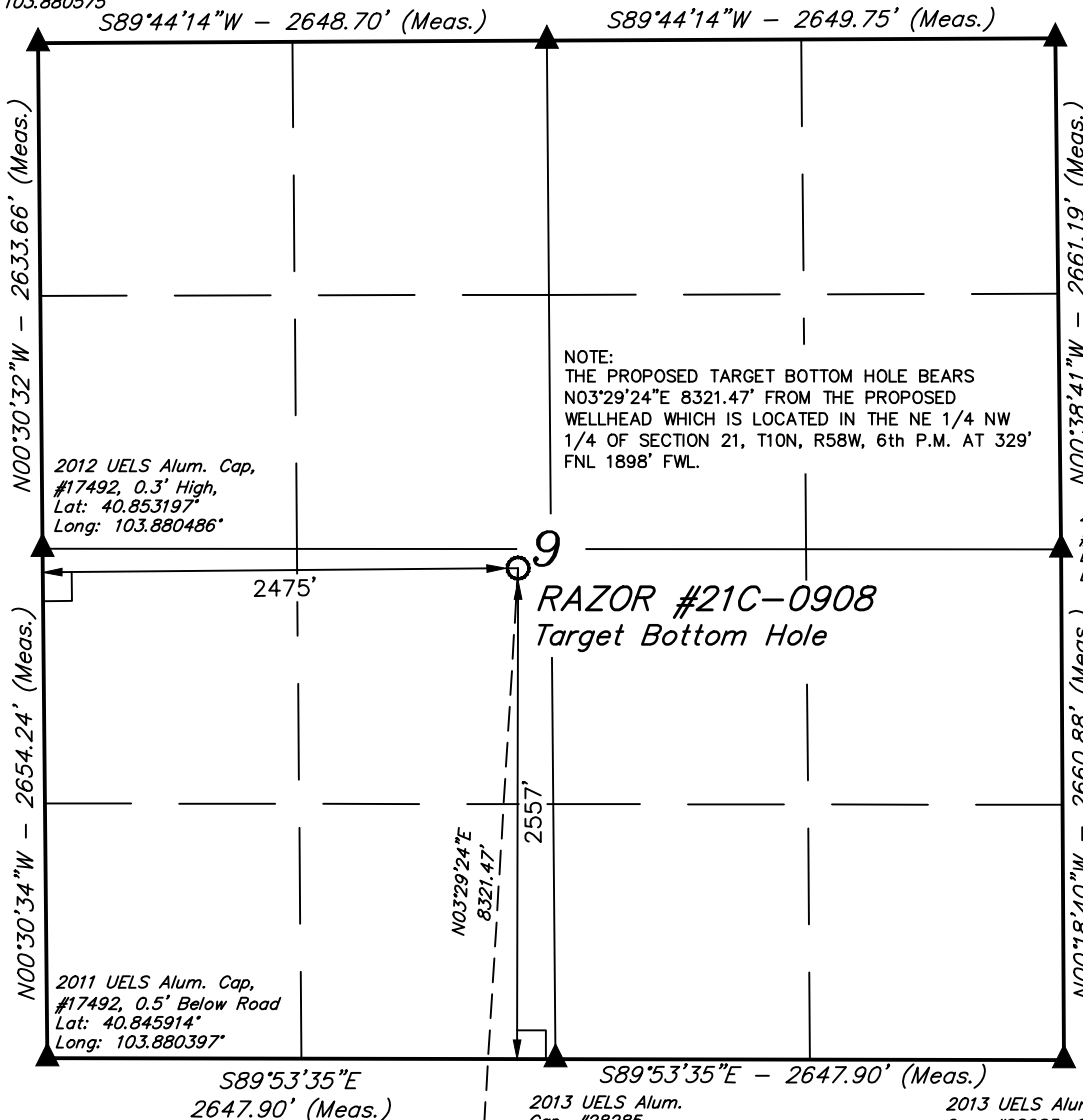
T10N, R58W, 6th P.M.

WHITING OIL & GAS CORP.

2012 UELS Alum. Cap,  
#17492, 0.3' High,  
Lat: 40.860422°  
Long: 103.880575°

2013 UELS Alum. Cap,  
#28285, 0.3' High,  
Lat: 40.860461°  
Long: 103.871003°

2013 UELS Alum. Cap,  
#28285, 0.5' Below Ground,  
Lat: 40.860494°  
Long: 103.861425°



# LEGEND:

- └─┘ = 90° SYMBOL
- = PROPOSED WELLHEAD.
- ▲ = SECTION CORNERS LOCATED.

Surface  
Location

NAD 83 (TARGET BOTTOM HOLE)	
LATITUDE	= 40°51'10.52" (40.852922)
LONGITUDE	= 103°52'17.54" (103.871539)
NAD 27 (TARGET BOTTOM HOLE)	
LATITUDE	= 40°51'10.57" (40.852953)
LONGITUDE	= 103°52'15.73" (103.871036)

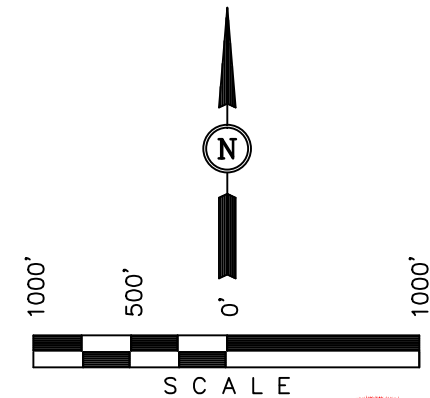
Well location, RAZOR #21C-0908, (TARGET BOTTOM HOLE), located as shown in the NE 1/4 SW 1/4 of Section 9, T10N, R58W, 6th P.M., Weld County, Colorado.

## BASIS OF ELEVATION

SPOT ELEVATION LOCATED AT THE NORTHEAST CORNER OF SECTION 15, T9N, R58W, 6th P.M. TAKEN FROM THE GATEHOOK SPRING, QUADRANGLE, COLORADO, WELD COUNTY, 7.5 MINUTE QUAD (TOPOGRAPHIC MAP) PUBLISHED BY THE UNITED STATES DEPARTMENT OF THE INTERIOR, GEOLOGICAL SURVEY. SAID ELEVATION IS MARKED AS BEING 4679 FEET.

## BASIS OF BEARINGS

BASIS OF BEARINGS IS A G.P.S. OBSERVATION.



## CERTIFICATE

THIS IS TO CERTIFY THAT THE ABOVE PLAT WAS PREPARED FROM FIELD NOTES OF ACTUAL SURVEYS MADE BY ME OR UNDER MY SUPERVISION AND THAT THE SAME ARE TRUE AND CORRECT TO THE BEST OF MY KNOWLEDGE AND BELIEF.

REV.: 03-20-14 H.K.W.  
REV.: 03-05-14 H.K.W.  
REV.: 04-10-13 J.W.  
REV.: 03-21-13 H.K.W.

REGISTERED LAND SURVEYOR  
REGISTRATION NO. 28285  
STATE OF COLORADO  
03-25-14

UINTAH ENGINEERING & LAND SURVEYING  
85 SOUTH 200 EAST - VERNAL, UTAH 84078  
(435) 789-1017

SCALE 1" = 1000'	DATE SURVEYED: 02-21-13	DATE DRAWN: 02-25-13
PARTY JEREMY HARRIS C.M. H.K.W.	REFERENCES G.L.O. PLAT	
WEATHER COLD	FILE	WHITING OIL & GAS CORP.