

T10N, R58W, 6th P.M.

Target Bottom Hole

2011 UELS Alum.
Cap, #17492
Lat: 40.830928°
Long: 103.880225°

2012 UELS Alum. Cap,
#28285, 0.3' High,
Lat: 40.831072°
Long: 103.870636°

2012 UELS Alum.
Cap, #28285,
0.5' Below Ground,
Lat: 40.831214°
Long: 103.861069°

S88°54'08"W
2655.05' (Meas.)

S88°54'00"W - 2648.73' (Meas.)

1831'

RAZOR #21C-0906

Elev. Graded Ground = **4844'**

2012 UELS Alum. Cap,
#28285, 0.3' High,
Lat: 40.823794°
Long: 103.880114°

21

NOTE:
THE PROPOSED TARGET BOTTOM HOLE FOR
THIS WELL IS LOCATED IN THE NE 1/4 SW
1/4 OF SECTION 9, T10N, R58W, 6th P.M.
AT 2556' FSL 1815' FWL. IT BEARS
N00°36'11"W 8307.34' FROM THE PROPOSED
WELLHEAD.

2012 UELS Alum. Cap,
#28285, 0.5' Below Ground,
Lat: 40.823953°
Long: 103.860986°

2010 UELS Alum. Cap,
#17492, Flush W/ Ground,
Lat: 40.816664°
Long: 103.880000°

2012 UELS Alum. Cap,
0.5' High
Lat: 40.816736°
Long: 103.870442°

2010 UELS Alum. Cap,
0.5' Below Ground
Lat: 40.816692°
Long: 103.860906°

S89°26'39"W - 2646.52' (Meas.)

N89°38'23"W - 2640.06' (Meas.)

WHITING OIL & GAS CORP.

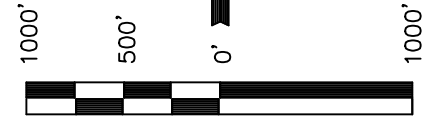
Well location, RAZOR #21C-0906, (SURFACE
LOCATION), located as shown in the NE 1/4 NW
1/4 of Section 21, T10N, R58W, 6th P.M., Weld
County, Colorado.

BASIS OF ELEVATION

SPOT ELEVATION LOCATED AT THE NORTHEAST CORNER OF
SECTION 15, T9N, R58W, 6th P.M. TAKEN FROM THE
GATEHOOK SPRING, QUADRANGLE, COLORADO, WELD COUNTY,
7.5 MINUTE QUAD (TOPOGRAPHIC MAP) PUBLISHED BY THE
UNITED STATES DEPARTMENT OF THE INTERIOR, GEOLOGICAL
SURVEY. SAID ELEVATION IS MARKED AS BEING 4679 FEET.

BASIS OF BEARINGS

BASIS OF BEARINGS IS A G.P.S. OBSERVATION.



SCALE

CERTIFICATE

THIS IS TO CERTIFY THAT THE ABOVE PLAT WAS PREPARED FROM
FIELD NOTES OF ACTUAL SURVEYS MADE BY ME OR UNDER MY
SUPERVISION AND THAT THE SAME ARE TRUE AND CORRECT TO THE
BEST OF MY KNOWLEDGE AND BELIEF.

REV.: 03-20-14 H.K.W.
REV.: 03-05-14 H.K.W.
REV.: 06-29-13 B.D.H.
REV.: 04-10-13 J.W.

REGISTERED LAND SURVEYOR
REGISTRATION NO. 28285
STATE OF COLORADO

UINTAH ENGINEERING & LAND SURVEYING
85 SOUTH 200 EAST - VERNAL, UTAH 84078
(435) 789-1017

LEGEND:

- └─┘ = 90° SYMBOL
- = PROPOSED WELLHEAD.
- ▲ = SECTION CORNERS LOCATED.

PDOP = 1.8

NAD 83 (SURFACE LOCATION)	
LATITUDE	= 40°49'48.46" (40.830128)
LONGITUDE	= 103°52'24.95" (103.873597)
NAD 27 (SURFACE LOCATION)	
LATITUDE	= 40°49'48.51" (40.830142)
LONGITUDE	= 103°52'23.14" (103.873094)

SCALE 1" = 1000'	DATE SURVEYED: 02-21-13	DATE DRAWN: 02-25-13
PARTY JEREMY HARRIS C.M. H.K.W.	REFERENCES G.L.O. PLAT	
WEATHER COLD	FILE	WHITING OIL & GAS CORP.

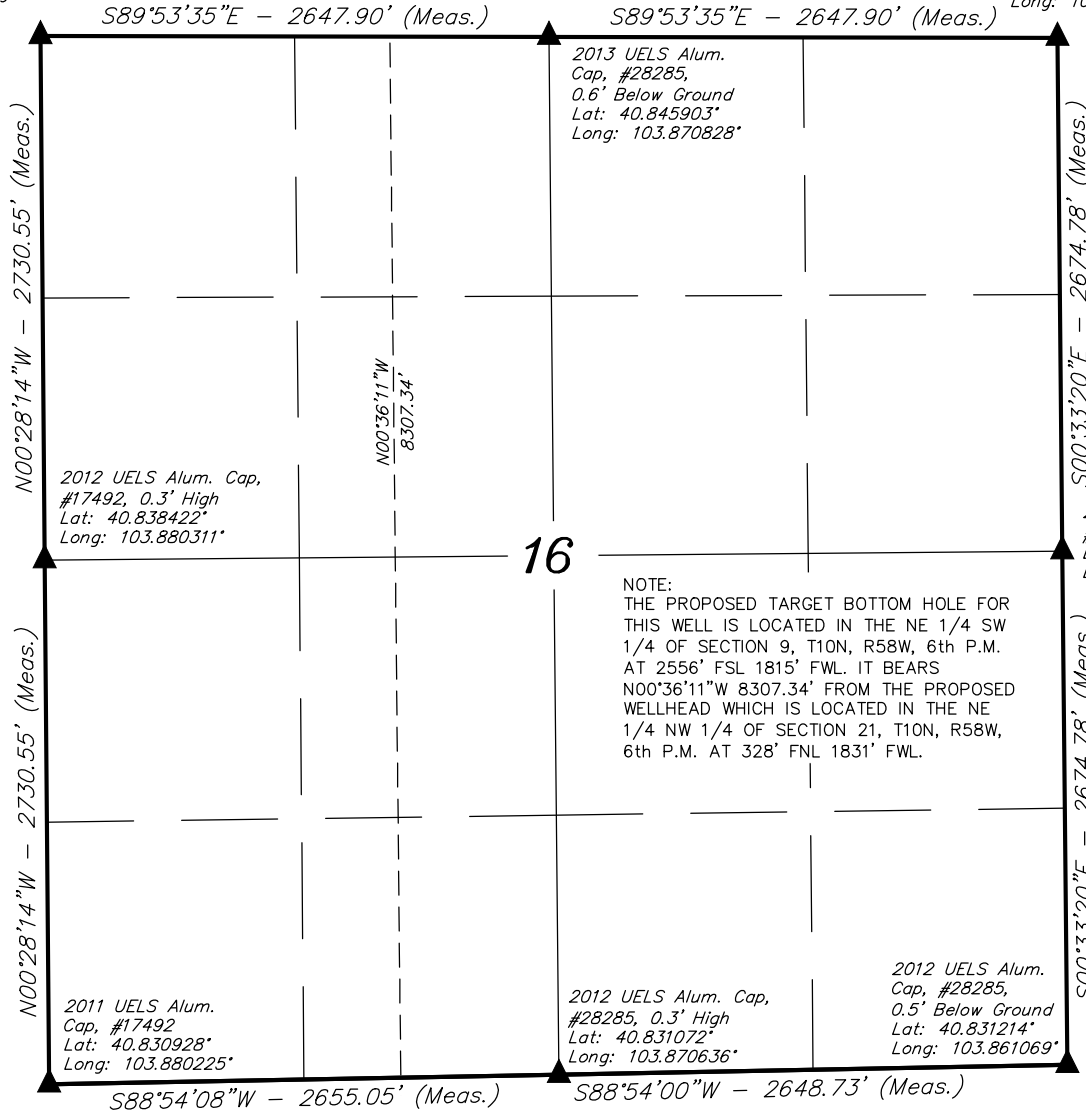
T10N, R58W, 6th P.M.

RAZOR #21C-0906

Target Bottom Hole

2011 UELS Alum. Cap,
#17492, 0.5' Below Road
Lat: 40.845914°
Long: 103.880397°

2013 UELS Alum. Cap,
#28285,
0.3' High
Lat: 40.845892°
Long: 103.861261°



● RAZOR #21C-0906
Surface Location

LEGEND:

- └─┘ = 90° SYMBOL
- = PROPOSED WELLHEAD.
- ▲ = SECTION CORNERS LOCATED.

NAD 83 (TARGET BOTTOM HOLE)	NAD 83 (SURFACE LOCATION)
LATITUDE = 40°51'10.52" (40.852922)	LATITUDE = 40°49'48.46" (40.830128)
LONGITUDE = 103°52'26.12" (103.873922)	LONGITUDE = 103°52'24.95" (103.873597)
NAD 27 (TARGET BOTTOM HOLE)	NAD 27 (SURFACE LOCATION)
LATITUDE = 40°51'10.57" (40.852936)	LATITUDE = 40°49'48.51" (40.830142)
LONGITUDE = 103°52'24.32" (103.873422)	LONGITUDE = 103°52'23.14" (103.873094)

WHITING OIL & GAS CORP.

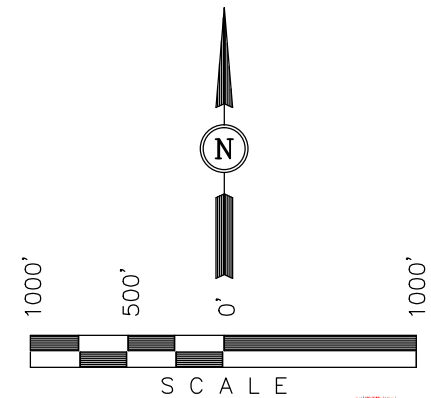
Well location, RAZOR #21C-0906, located in the NE 1/4 NW 1/4 of Section 21, T10N, R58W, 6th P.M., Weld County, Colorado.

BASIS OF ELEVATION

SPOT ELEVATION LOCATED AT THE NORTHEAST CORNER OF SECTION 15, T9N, R58W, 6th P.M. TAKEN FROM THE GATEHOOK SPRING, QUADRANGLE, COLORADO, WELD COUNTY, 7.5 MINUTE QUAD (TOPOGRAPHIC MAP) PUBLISHED BY THE UNITED STATES DEPARTMENT OF THE INTERIOR, GEOLOGICAL SURVEY. SAID ELEVATION IS MARKED AS BEING 4679 FEET.

BASIS OF BEARINGS

BASIS OF BEARINGS IS A G.P.S. OBSERVATION.



CERTIFICATE

THIS IS TO CERTIFY THAT THE ABOVE PLAT WAS PREPARED FROM FIELD NOTES OF ACTUAL SURVEYS MADE BY ME OR UNDER MY SUPERVISION AND THAT THE SAME ARE TRUE AND CORRECT TO THE BEST OF MY KNOWLEDGE AND BELIEF.

REV. 05-21-14 K.B.
REV. 03-20-14 H.K.W.
REV. 03-05-14 H.K.W.
REV. 06-29-13 B.D.H.

REGISTERED LAND SURVEYOR
REGISTRATION NO. 28285
STATE OF COLORADO

UINTAH ENGINEERING & LAND SURVEYING
85 SOUTH 200 EAST - VERNAL, UTAH 84078
(435) 789-1017

SCALE 1" = 1000'	DATE SURVEYED: 02-21-13	DATE DRAWN: 02-25-13
PARTY JEREMY HARRIS C.M. H.K.W.	REFERENCES G.L.O. PLAT	
WEATHER COLD	FILE	WHITING OIL & GAS CORP.

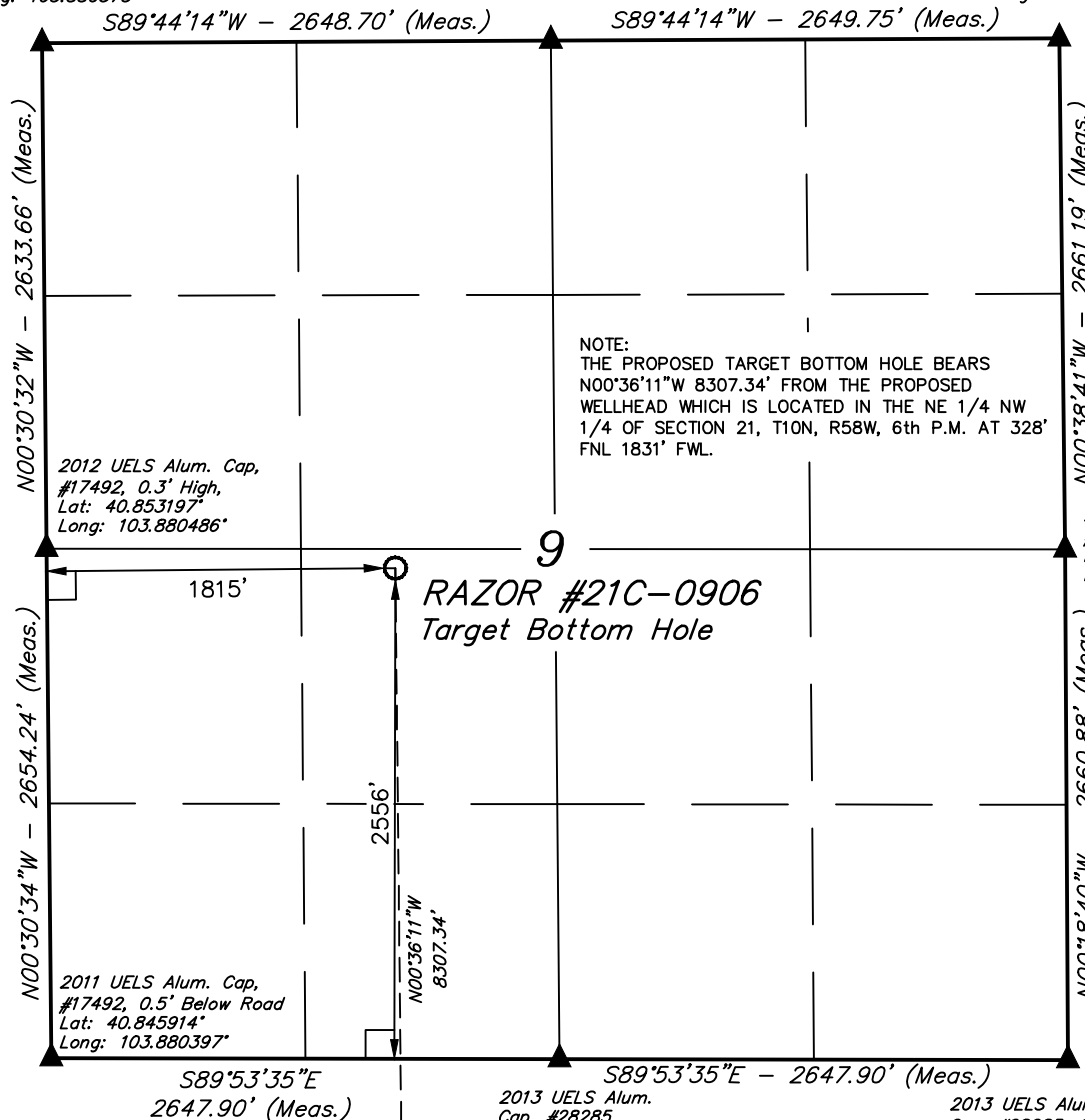
T10N, R58W, 6th P.M.

WHITING OIL & GAS CORP.

2012 UELS Alum. Cap,
#17492, 0.3' High,
Lat: 40.860422°
Long: 103.880575°

2013 UELS Alum. Cap
0.3' High, #28285,
Lat: 40.860461°
Long: 103.871003°

2013 UELS Alum.
Cap, #28285,
0.5' Below Ground,
Lat: 40.860494°
Long: 103.861425°



NOTE:
THE PROPOSED TARGET BOTTOM HOLE BEARS
N00°36'11\"W 8307.34' FROM THE PROPOSED
WELLHEAD WHICH IS LOCATED IN THE NE 1/4 NW
1/4 OF SECTION 21, T10N, R58W, 6th P.M. AT 328'
FNL 1831' FWL.

RAZOR #21C-0906
Target Bottom Hole

- LEGEND:**
- └─┘ = 90° SYMBOL
 - = PROPOSED WELLHEAD.
 - ▲ = SECTION CORNERS LOCATED.

Surface
Location

NAD 83 (TARGET BOTTOM HOLE)
LATITUDE = 40°51'10.52" (40.852922)
LONGITUDE = 103°52'26.12" (103.873922)
NAD 27 (TARGET BOTTOM HOLE)
LATITUDE = 40°51'10.57" (40.852936)
LONGITUDE = 103°52'24.32" (103.873422)

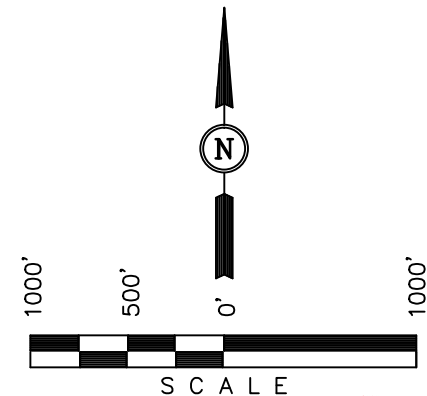
Well location, RAZOR #21C-0906, (TARGET
BOTTOM HOLE), located as shown in the NE 1/4
SW 1/4 of Section 9, T10N, R58W, 6th P.M., Weld
County, Colorado.

BASIS OF ELEVATION

SPOT ELEVATION LOCATED AT THE NORTHEAST CORNER OF
SECTION 15, T9N, R58W, 6th P.M. TAKEN FROM THE
GATEHOOK SPRING, QUADRANGLE, COLORADO, WELD COUNTY,
7.5 MINUTE QUAD (TOPOGRAPHIC MAP) PUBLISHED BY THE
UNITED STATES DEPARTMENT OF THE INTERIOR, GEOLOGICAL
SURVEY. SAID ELEVATION IS MARKED AS BEING 4679 FEET.

BASIS OF BEARINGS

BASIS OF BEARINGS IS A G.P.S. OBSERVATION.



CERTIFICATE

THIS IS TO CERTIFY THAT THE ABOVE PLAT WAS PREPARED FROM
FIELD NOTES OF ACTUAL SURVEYS MADE BY ME OR UNDER MY
SUPERVISION AND THAT THE SAME ARE TRUE AND CORRECT TO THE
BEST OF MY KNOWLEDGE AND BELIEF.

REV.: 03-20-14 H.K.W.
REV.: 03-05-14 H.K.W.
REV.: 04-10-13 J.W.
REV.: 03-21-13 H.K.W.

REGISTERED LAND SURVEYOR
REGISTRATION NO. 28285
STATE OF COLORADO
03-25-14

UINTAH ENGINEERING & LAND SURVEYING
85 SOUTH 200 EAST - VERNAL, UTAH 84078
(435) 789-1017

SCALE 1" = 1000'	DATE SURVEYED: 05-18-12	DATE DRAWN: 05-22-12
PARTY DAVE SWANSON C.T. J.M.H.	REFERENCES G.L.O. PLAT	
WEATHER WARM	FILE	WHITING OIL & GAS CORP.