

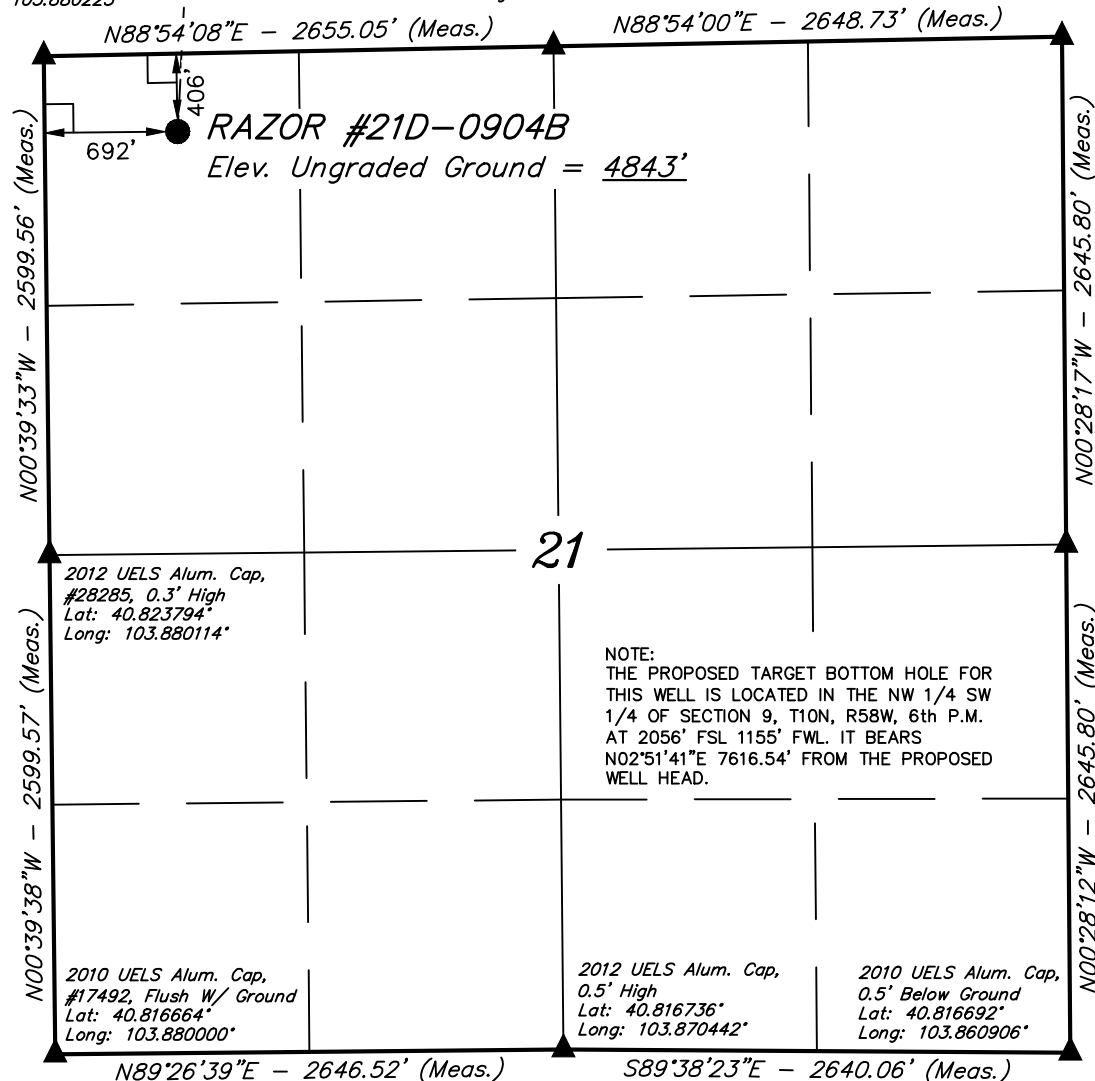
Target
Bottom
Hole

T10N, R58W, 6th P.M.

2011 UELS Alum. Cap,
#17492
Lat: 40.830928°
Long: 103.880225°

2012 UELS Alum. Cap,
#28285, 0.3' High
Lat: 40.831072°
Long: 103.870636°

2012 UELS Alum.
Cap, #28285,
0.5' Below Ground
Lat: 40.831214°
Long: 103.861069°



NOTE:
THE PROPOSED TARGET BOTTOM HOLE FOR
THIS WELL IS LOCATED IN THE NW 1/4 SW
1/4 OF SECTION 9, T10N, R58W, 6th P.M.
AT 2056' FSL 1155' FWL. IT BEARS
N02°51'41\"E 7616.54' FROM THE PROPOSED
WELL HEAD.

LEGEND:

- └─┘ = 90° SYMBOL
- = PROPOSED WELL HEAD.
- ▲ = SECTION CORNERS LOCATED.

PDOP = 1.4

NAD 83 (SURFACE LOCATION)	
LATITUDE	= 40°49'47.47" (40.829853)
LONGITUDE	= 103°52'39.75" (103.877708)
NAD 27 (SURFACE LOCATION)	
LATITUDE	= 40°49'47.52" (40.829867)
LONGITUDE	= 103°52'37.94" (103.877206)

WHITING OIL & GAS CORP.

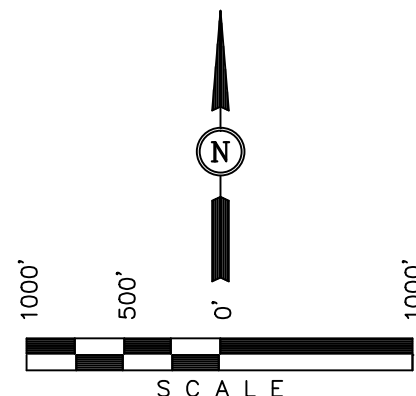
Well location, RAZOR #21D-0904B (SURFACE LOCATION), located as shown in the NW 1/4 NW 1/4 of Section 21, T10N, R58W, 6th P.M., Weld County, Colorado.

BASIS OF ELEVATION

SPOT ELEVATION LOCATED AT THE NORTHEAST CORNER OF SECTION 15, T9N, R58W, 6th P.M. TAKEN FROM THE GATEHOOK SPRING, QUADRANGLE, COLORADO, WELD COUNTY, 7.5 MINUTE QUAD (TOPOGRAPHIC MAP) PUBLISHED BY THE UNITED STATES DEPARTMENT OF THE INTERIOR, GEOLOGICAL SURVEY. SAID ELEVATION IS MARKED AS BEING 4679 FEET.

BASIS OF BEARINGS

BASIS OF BEARINGS IS A G.P.S. OBSERVATION.



CERTIFICATE

THIS IS TO CERTIFY THAT THE ABOVE PLAT WAS PREPARED FROM FIELD NOTES OF ACTUAL SURVEYS MADE BY ME OR UNDER MY SUPERVISION AND THAT THE SAME ARE TRUE AND CORRECT TO THE BEST OF MY KNOWLEDGE AND BELIEF.

REGISTERED LAND SURVEYOR
REGISTRATION NO. 17492
STATE OF COLORADO
06-29-13

REVISION: 06-29-13 B.D.H.
REVISION: 04-11-13 J.S.
REVISION: 03-22-13

UINTAH ENGINEERING & LAND SURVEYING
85 SOUTH 200 EAST - VERNAL, UTAH 84078
(435) 789-1017

SCALE 1" = 1000'	DATE SURVEYED: 02-20-13	DATE DRAWN: 02-22-13
PARTY J.H. C.M. A.D.	REFERENCES G.L.O. PLAT	
WEATHER COLD	FILE WHITING OIL & GAS CORP.	

SCALE 1" = 1000'	DATE SURVEYED: 02-20-13	DATE DRAWN: 02-22-13
PARTY J.H. C.M. A.D.	REFERENCES G.L.O. PLAT	
WEATHER COLD	FILE WHITING OIL & GAS CORP.	

T10N, R58W, 6th P.M.

WHITING OIL & GAS CORP.

2012 UELS Alum. Cap,
0.3' High, 17492
Lat: 40.860422°
Long: 103.880575°

2013 UELS Alum. Cap,
#28285, 0.3' High
Lat: 40.860461°
Long: 103.871003°

2013 UELS Alum.
Cap, #28285,
0.5' Below Ground
Lat: 40.860494°
Long: 103.861425°

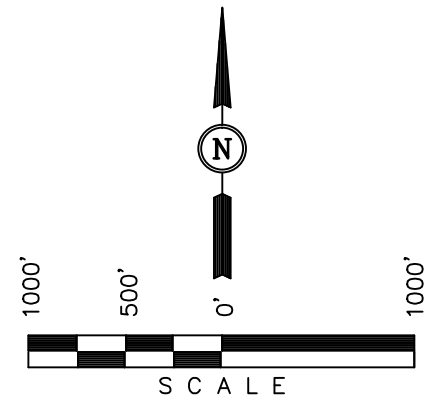
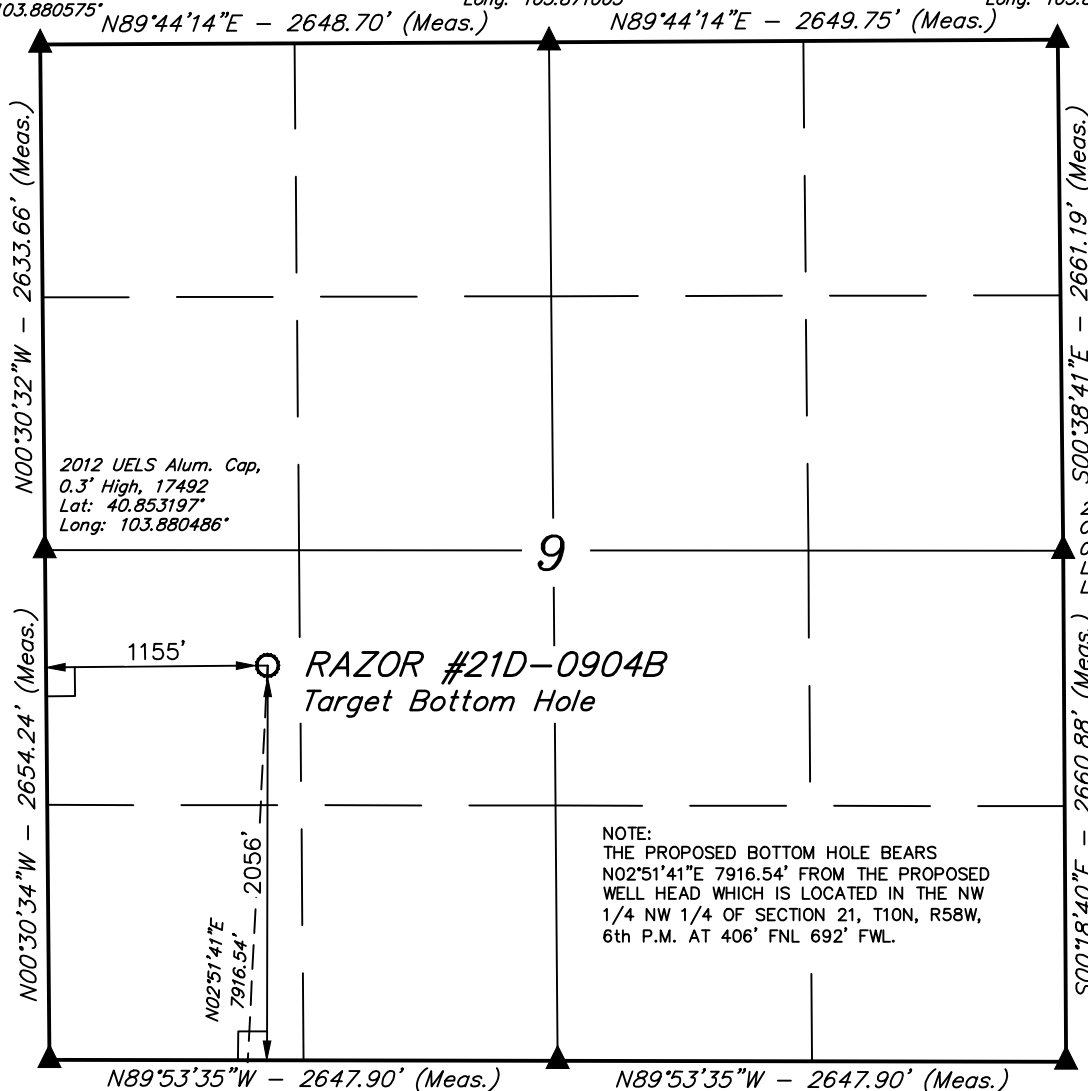
Well location, RAZOR #21D-0904B (TARGET BOTTOM HOLE), located as shown in the NW 1/4 SW 1/4 of Section 9, T10N, R58W, 6th P.M., Weld County, Colorado.

BASIS OF ELEVATION

SPOT ELEVATION LOCATED AT THE NORTHEAST CORNER OF SECTION 15, T9N, R58W, 6th P.M. TAKEN FROM THE GATEHOOK SPRING, QUADRANGLE, COLORADO, WELD COUNTY, 7.5 MINUTE QUAD (TOPOGRAPHIC MAP) PUBLISHED BY THE UNITED STATES DEPARTMENT OF THE INTERIOR, GEOLOGICAL SURVEY. SAID ELEVATION IS MARKED AS BEING 4679 FEET.

BASIS OF BEARINGS

BASIS OF BEARINGS IS A G.P.S. OBSERVATION.



CERTIFICATE

THIS IS TO CERTIFY THAT THE ABOVE PLAT WAS PREPARED FROM FIELD NOTES OF ACTUAL SURVEYS MADE BY ME OR UNDER MY SUPERVISION AND THAT THE SAME ARE TRUE AND CORRECT TO THE BEST OF MY KNOWLEDGE AND BELIEF.

REGISTERED LAND SURVEYOR
REGISTRATION NO. 17492
STATE OF COLORADO

REVISION: 04-11-13 J.S.
REVISION: 03-22-13

2011 UELS Alum. Cap,
#17492, 0.5' Below Road
Lat: 40.845914°
Long: 103.880397°

2013 UELS Alum.
Cap, #28285,
0.6' Below Ground
Lat: 40.845903°
Long: 103.870828°

2013 UELS Alum.
Cap, #28285,
0.3' High
Lat: 40.845892°
Long: 103.861261°

LEGEND:

- └─┘ = 90° SYMBOL
- = PROPOSED WELL HEAD.
- ▲ = SECTION CORNERS LOCATED.

Surface Location

NAD 83 (TARGET BOTTOM HOLE)	
LATITUDE	= 40°51'05.58" (40.851550)
LONGITUDE	= 103°52'34.65" (103.876292)
NAD 27 (TARGET BOTTOM HOLE)	
LATITUDE	= 40°51'05.63" (40.851564)
LONGITUDE	= 103°52'32.84" (103.875789)

UINTAH ENGINEERING & LAND SURVEYING
85 SOUTH 200 EAST - VERNAL, UTAH 84078
(435) 789-1017

SCALE 1" = 1000'	DATE SURVEYED: 02-20-13	DATE DRAWN: 02-22-13
PARTY J.H. C.M. A.D.	REFERENCES G.L.O. PLAT	
WEATHER COLD	FILE WHITING OIL & GAS CORP.	