

WPX ENERGY ROCKY MOUNTAIN LLC-EBUS

PA 522-2

**Aztec/1000**

## **Post Job Summary**

# **Cement Surface Casing**

Date Prepared: 02/17/2014

Submitted by: Grand Junction Cement Engineering

## The Road to Excellence Starts with Safety

Sold To #: 300721	Ship To #: 3191533	Quote #:	Sales Order #: 0901121558
Customer: WPX ENERGY ROCKY MOUNTAIN LLC-EBUS		Customer Rep:	
Well Name: WPX ENERGY		Well #: PA 522-2	API/UWI #: 05-045-22136-00
Field: PARACHUTE	City (SAP): PAR	County/Parish: GARFIELD	State: COLORADO
Legal Description: NE SW-2-7S-95W-2061FSL-1542FWL			
Contractor:		Rig/Platform Name/Num: Aztec 1000	
Job BOM: 7521			
Well Type: DIRECTIONAL GAS			
Sales Person: HALAMERICA\HB50180		Srvc Supervisor: Edward Deussen	
Job			

Formation Name			
Formation Depth (MD)	Top		Bottom
Form Type			BHST
Job depth MD	892ft		Job Depth TVD
Water Depth			Wk Ht Above Floor
Perforation Depth (MD)	From		To

Well Data										
Description	New / Used	Size in	ID in	Weight lbm/ft	Thread	Grade	Top MD ft	Bottom MD ft	Top TVD ft	Bottom TVD ft
Casing		9.625	9.001	32.3			0	892		
Open Hole Section			13.5				0	892		

Tools and Accessories									
Type	Size in	Qty	Make	Depth ft		Type	Size in	Qty	Make
Guide Shoe	9.625	1		892		Top Plug	9.625	1	HES
Float Shoe	9.625	1				Bottom Plug	9.625	1	HES
Float Collar	9.625	1				SSR plug set	9.625	1	HES
Insert Float	9.625	1				Plug Container	9.625	1	HES
Stage Tool	9.625	1				Centralizers	9.625	1	HES

Miscellaneous Materials											
Gelling Agt		Conc		Surfactant		Conc		Acid Type		Qty	Conc
Treatment Fld		Conc		Inhibitor		Conc		Sand Type		Size	Qty

Fluid Data										
Stage/Plug #: 1										
Fluid #	Stage Type	Fluid Name	Qty	Qty UoM	Mixing Density lbm/gal	Yield ft3/sack	Mix Fluid Gal	Rate bbl/min	Total Mix Fluid Gal	
1	Fresh Water Spacer	Fresh Water Spacer	50	bbl	8.33			8		
Fluid #	Stage Type	Fluid Name	Qty	Qty UoM	Mixing Density lbm/gal	Yield ft3/sack	Mix Fluid Gal	Rate bbl/min	Total Mix Fluid Gal	
2	VersaCem Tail	VERSACEM (TM) SYSTEM	250	Sack/Ton	12.8	2.11		8	11.77	

11.76 Gal		FRESH WATER							
94 lbm		TYPE I / II CEMENT, BULK (101439798)							
Fluid #	Stage Type	Fluid Name	Qty	Qty UoM	Mixing Density lbm/gal	Yield ft3/sack	Mix Fluid Gal	Rate bbl/min	Total Mix Fluid Gal
3	Displacement	Displacement	66.6	bbl	8.3				
Cement Left In Pipe		Amount	40 ft		Reason		Shoe Joint		
Comment									

# Summary Report



Crew: \_\_\_\_\_

Job Start Date: 2/17/2014

Sales Order #: 0901121558  
WO #: 0901121558  
PO/AFE #: NA

Customer:	WPX ENERGY ROCKY MOUNTAIN LLC-EBUS	Field:	PARACHUTE	Job Type:	CMT SURFACE CASING BOM
UWI / API Number:	05-045-22136-00	County/Parish:	GARFIELD	Service Supervisor:	Edward Deussen
Well Name:	WPX ENERGY	State:	COLORADO		
Well No:	PA 522-2	Latitude:	39.465138	Cust Rep Name:	Josh Garibay
		Longitude:	-107.969344	Cust Rep Phone #:	
		Sect / Twn / Rng:	2/7/95		

**Remarks:**

<b>The Information Stated Herein Is Correct</b>	Customer Representative Signature	Date
	Customer Representative Printed Name	

# HALLBURTON

WPX ENERGY ROCKY MOUNTAIN LLC-EBUS  
901121558  
Case 1

## 3.1 Job Event Log

Type	Seq. No.	Activity	Graph Label	Date	Time	Source	Pass-Side Pump Pressure (psi)	Downhole Density (ppg)	Combined Pump Rate (bbl/min)	Pump Stage Total (bbl)	Comment
Event	1	Call Out	Call Out	2/17/2014	05:00:00	USER					
Event	2	Pre-Convoy Safety Meeting	Pre-Convoy Safety Meeting	2/17/2014	06:15:00	USER					All HES Personnel
Event	3	Crew Leave Yard	Crew Leave Yard	2/17/2014	08:30:00	USER					1 Elite, 1 660, 1 Pickup
Event	4	Arrive At Loc	Arrive At Loc	2/17/2014	12:00:00	USER					O/L Time changed to 1300 per Coordinator
Event	5	Assessment Of Location Safety Meeting	Assessment Of Location Safety Meeting	2/17/2014	12:15:00	USER					
Event	6	Pre-Rig Up Safety Meeting	Pre-Rig Up Safety Meeting	2/17/2014	13:15:00	USER					All HES Personnel
Event	7	Rig-Up Equipment	Rig-Up Equipment	2/17/2014	13:30:00	USER					All HES Personnel and Rig Crew
Event	8	Pre-Job Safety Meeting	Pre-Job Safety Meeting	2/17/2014	14:10:12	USER	1.00	8.26	0.00	17.9	TD 903', 17' 891', SJ 846', 13 1/2" OH, Mud 10.1 PPG w/ 50 Visc, 9.5/8" 32.3# Cdg
Event	9	Start Job	Start Job	2/17/2014	15:50:17	USER	-2.00	8.21	0.00	0.0	
Event	10	Prime Pumps	Prime Lines	2/17/2014	15:52:06	COMS	-4.00	8.18	0.00	0.0	
Event	11	Test Lines	Test Lines	2/17/2014	15:55:15	COMS	3080.00	8.42	0.00	2.1	Pressured up to 3080 psi - Pressure held well
Event	12	Pump Spacer 1	Pump H2O Spacer	2/17/2014	15:57:13	COMS	18.00	8.29	2.10	0.3	Fresh Water
Event	13	Pump Tail Cement	Pump Tail Cement	2/17/2014	16:10:18	COMS	146.00	11.35	4.00	1.0	250 sbs, 12.8 ppg, 2.11 yield, 11.77 gal/sk
Event	14	Shutdown	Shutdown/Wash Up	2/17/2014	16:22:54	COMS	18.00	10.89	0.00	92.6	
Event	15	Drop Top Plug	Drop Top Plug	2/17/2014	16:28:54	COMS	0.00	11.06	0.00	92.6	
Event	16	Pump Displacement	Pump Displacement	2/17/2014	16:32:18	COMS	32.00	9.25	3.10	1.4	Fresh Water
Event	17	Slow Rate	Slow Rate	2/17/2014	16:39:52	USER	297.00	8.23	5.00	59.3	
Event	18	Bump Plug	Bump Plug	2/17/2014	16:45:01	COMS	857.00	8.26	0.00	70.4	
Event	19	Other	Check Floats	2/17/2014	16:47:28	COMS	24.00	8.25	0.00	70.4	Floats Held - 1 bbl back

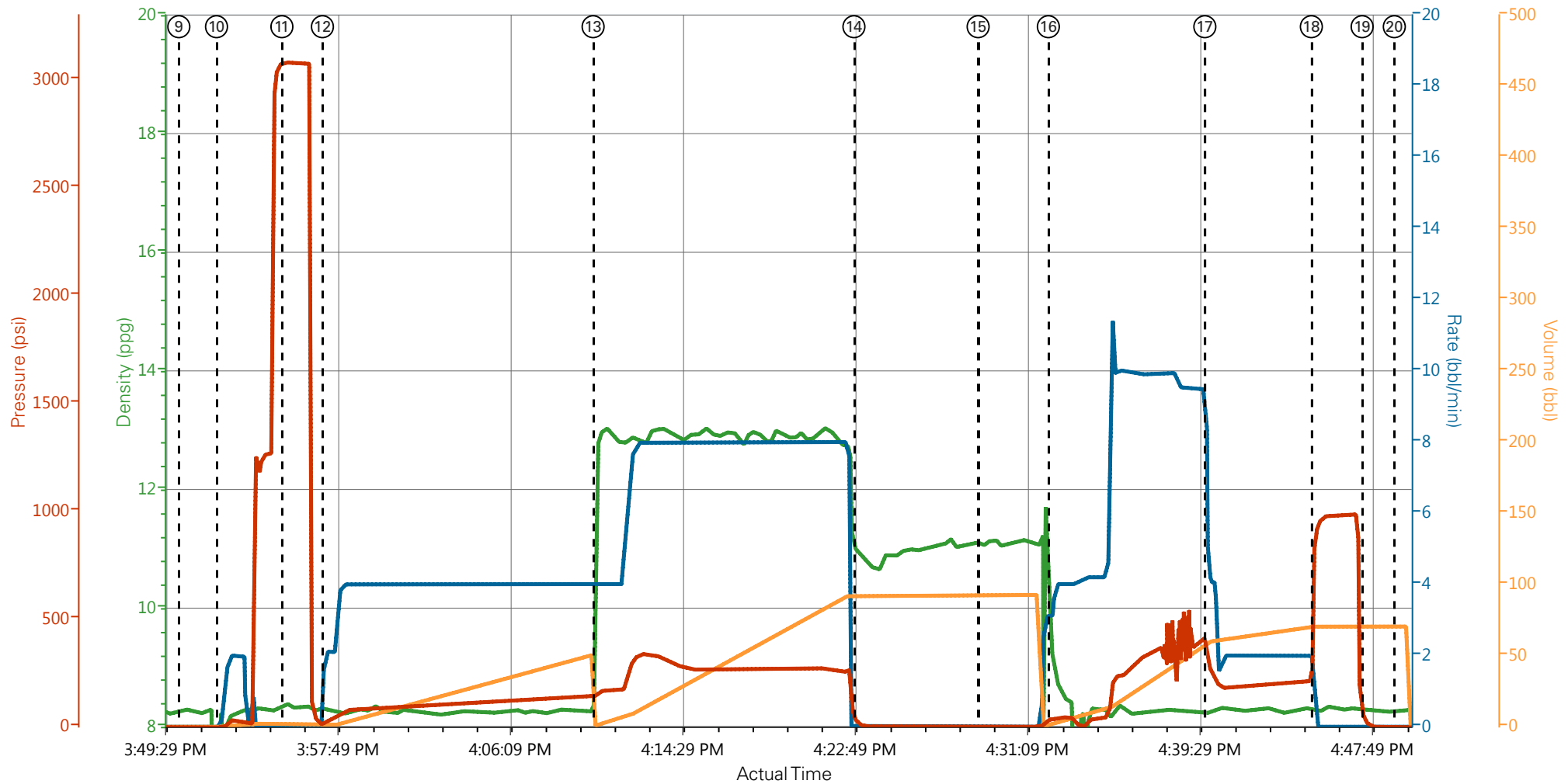


WAPN (and many other) stations participate with America's

**●**

Event	20	End Job	End Job	2/17/2014	16:49:01	COM5	4.00	8.27	0.00	70.8	21:00:00 arrived to surface no signs used
Event	21	Pre-Rig Up Safety Meeting	Pre-Rig Down Safety Meeting	2/17/2014	17:00:00	LOGR					all 40ES Engaged
Event	22	Rig-Down Equipment	Rig-Down Equipment	2/17/2014	17:15:00	LOGR					all 40ES Engaged
Event	23	Pre-Rig Up Safety Meeting	Pre-Corroy Safety Meeting	2/17/2014	18:15:00	LOGR					all 40ES Engaged
Event	24	Crew Leave Yard	Crew Leave Location	2/17/2014	18:30:00	LOGR					Thanks you for strong collaboration & assistance and crew

# WPX - PA 522-2 - 9 5/8" SURFACE



DH Density (ppg) Comb Pump Rate (bbl/min) PS Pump Press (psi) Pump Stg Tot (bbl)

- |   |  |                                     |  |
|---|--|-------------------------------------|--|
| ① Call Out n/a;n/a;n/a;n/a                              | ⑦ Rig-Up Equipment n/a;n/a;n/a;n/a     | ⑬ Pump Tail Cement 11.71;4;146;1.1  | ⑲ Check Floats 8.25;0;24;70.4                  |
| ② Pre-Convoy Safety Meeting n/a;n/a;n/a;n/a             | ⑧ Pre-Job Safety Meeting 8.26;0;1;17.9 | ⑭ Shutdown/Wash Up 10.89;0;16;92.6  | 20 End Job 8.28;0;-4;70.4                      |
| ③ Crew Leave Yard n/a;n/a;n/a;n/a                       | ⑨ Start Job 8.22;0;-2;0                | ⑮ Drop Top Plug 11.07;0;0;92.6      | 21 Pre-Rig Down Safety Meeting n/a;n/a;n/a;n/a |
| ④ Arrive At Loc n/a;n/a;n/a;n/a                         | ⑩ Prime Lines 8.24;0;-4;0              | ⑯ Pump Displacement 9.25;3.1;32;1.4 | 22 Rig-Down Equipment n/a;n/a;n/a;n/a          |
| ⑤ Assessment Of Location Safety Meeting n/a;n/a;n/a;n/a | ⑪ Test Lines 8.4;0;3080;2.1            | ⑰ Slow Rate 8.23;4.9;291;59.4       | 23 Pre-Convoy Safety Meeting n/a;n/a;n/a;n/a   |
| ⑥ Pre-Rig Up Safety Meeting n/a;n/a;n/a;n/a             | ⑫ Pump H2O Spacer 8.27;2.1;19;0.3      | ⑱ Bump Plug 8.27;0;871;70.4         | 24 Crew Leave Location n/a;n/a;n/a;n/a         |

▼ **HALLIBURTON** | iCem® Service

Created: 2014-02-17 14:02:56, Version: 3.0.121

Edit

Customer : WPX ENERGY ROCKY MOUNTAIN LLC-EBUS

Job Date : 2/17/2014 2:06:46 PM

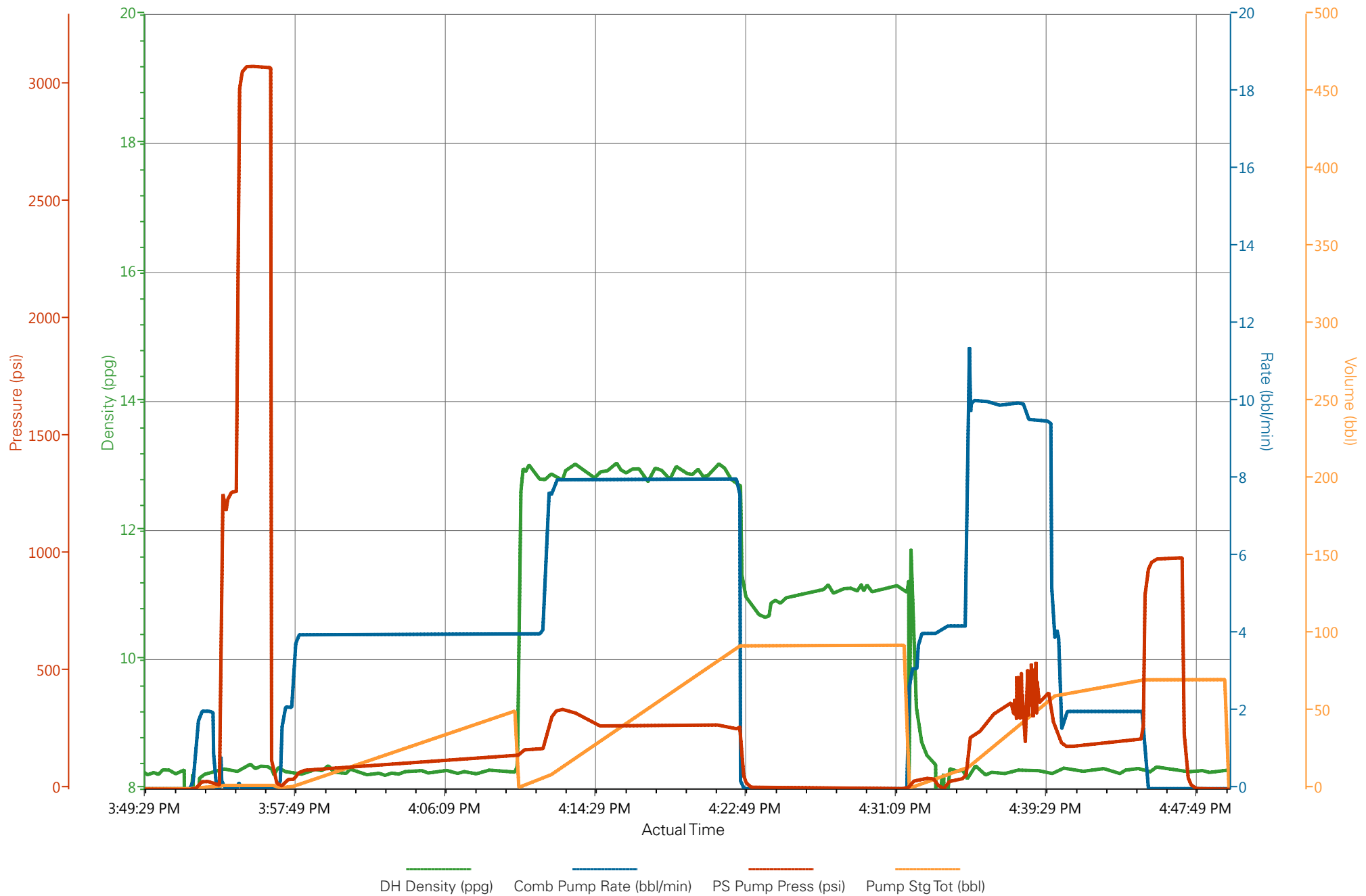
Well : PA 522-2

Representative : Josh Garibay

Sales Order # : 901121558

Elite #9 : Ed Deussen / Carl Kukus

# WPX - PA 522-2 - 9 5/8" SURFACE





# HALLIBURTON

## Water Analysis Report

Company: WPX

Submitted by: ED DEUSSEN

Attention: J.TROUT

Lease PA

Well # 522-2

Date: 2/17/2014

Date Rec.: 2/17/2014

S.O.# 901121558

Job Type: 9 5/8" SURFACE

Specific Gravity	<i>MAX</i>	<b>1</b>
pH	<i>8</i>	<b>6.5</b>
Potassium (K)	<i>5000</i>	<b>0</b> Mg / L
Calcium (Ca)	<i>500</i>	<b>250</b> Mg / L
Iron (FE2)	<i>300</i>	<b>0</b> Mg / L
Chlorides (Cl)	<i>3000</i>	<b>0</b> Mg / L
Sulfates (SO <sub>4</sub> )	<i>1500</i>	<b>&lt;200</b> Mg / L
Temp	<i>40-80</i>	<b>47</b> Deg
Total Dissolved Solids		<b>420</b> Mg / L

Respectfully: ED DEUSSEN

Title: CEMENTING SUPERVISOR

Location: Grand Junction, CO

NOTICE:

This report is limited to the described sample tested. Any person using or relying on this report agrees that Halliburton shall not be liable for any loss or damage whether due to act or omission resulting from such report or i