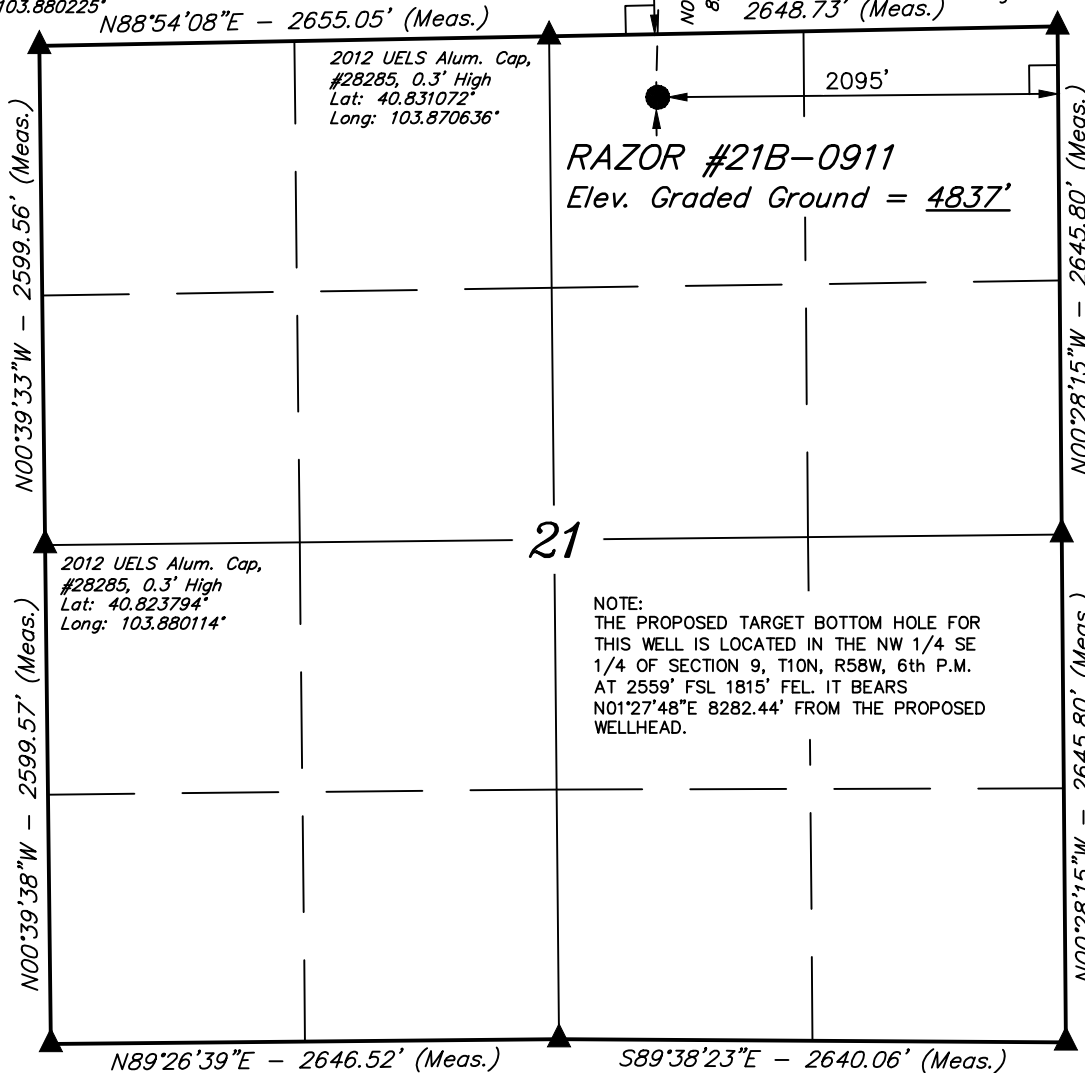


T10N, R58W, 6th P.M.

Target Bottom
Hole

2011 UELS Alum. Cap,
#17492
Lat: 40.830928°
Long: 103.880225°

2012 UELS Alum.
Cap, #28285,
0.5' Below Ground
Lat: 40.831214°
Long: 103.861069°



NOTE:
THE PROPOSED TARGET BOTTOM HOLE FOR
THIS WELL IS LOCATED IN THE NW 1/4 SE
1/4 OF SECTION 9, T10N, R58W, 6th P.M.
AT 2559' FSL 1815' FEL. IT BEARS
N01°27'48"E 8282.44' FROM THE PROPOSED
WELLHEAD.

2010 UELS Alum. Cap,
#17492, Flush W/ Ground
Lat: 40.816664°
Long: 103.880000°

2012 UELS Alum. Cap,
0.5' High
Lat: 40.816736°
Long: 103.870442°

2010 UELS Alum. Cap,
0.5' Below Ground
Lat: 40.816692°
Long: 103.860906°

LEGEND:

- └─┘ = 90° SYMBOL
- = PROPOSED WELL HEAD.
- ▲ = SECTION CORNERS LOCATED.

PDOP = 1.8

NAD 83 (SURFACE LOCATION)	
LATITUDE	= 40°49'48.72" (40.830200)
LONGITUDE	= 103°52'07.06" (103.868628)
NAD 27 (SURFACE LOCATION)	
LATITUDE	= 40°49'48.77" (40.830214)
LONGITUDE	= 103°52'05.25" (103.868125)

WHITING OIL & GAS CORP.

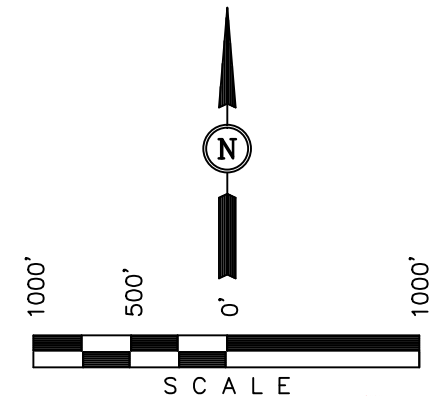
Well location, RAZOR #21B-0911 (SURFACE LOCATION), located as shown in the NW 1/4 NE 1/4 of Section 21, T10N, R58W, 6th P.M., Weld County, Colorado.

BASIS OF ELEVATION

SPOT ELEVATION LOCATED AT THE NORTHEAST CORNER OF SECTION 15, T9N, R58W, 6th P.M. TAKEN FROM THE GATEHOOK SPRING, QUADRANGLE, COLORADO, WELD COUNTY, 7.5 MINUTE QUAD (TOPOGRAPHIC MAP) PUBLISHED BY THE UNITED STATES DEPARTMENT OF THE INTERIOR, GEOLOGICAL SURVEY. SAID ELEVATION IS MARKED AS BEING 4679 FEET.

BASIS OF BEARINGS

BASIS OF BEARINGS IS A G.P.S. OBSERVATION.



CERTIFICATE

THIS IS TO CERTIFY THAT THE ABOVE PLAT WAS PREPARED FROM FIELD NOTES OF ACTUAL SURVEYS MADE BY ME OR UNDER MY SUPERVISION AND THAT THE SAME ARE TRUE AND CORRECT TO THE BEST OF MY KNOWLEDGE AND BELIEF.

REVISION: 03-19-14 J.S.
REVISION: 03-07-14 H.K.W.
REVISION: 04-04-13
REVISION: 03-21-13

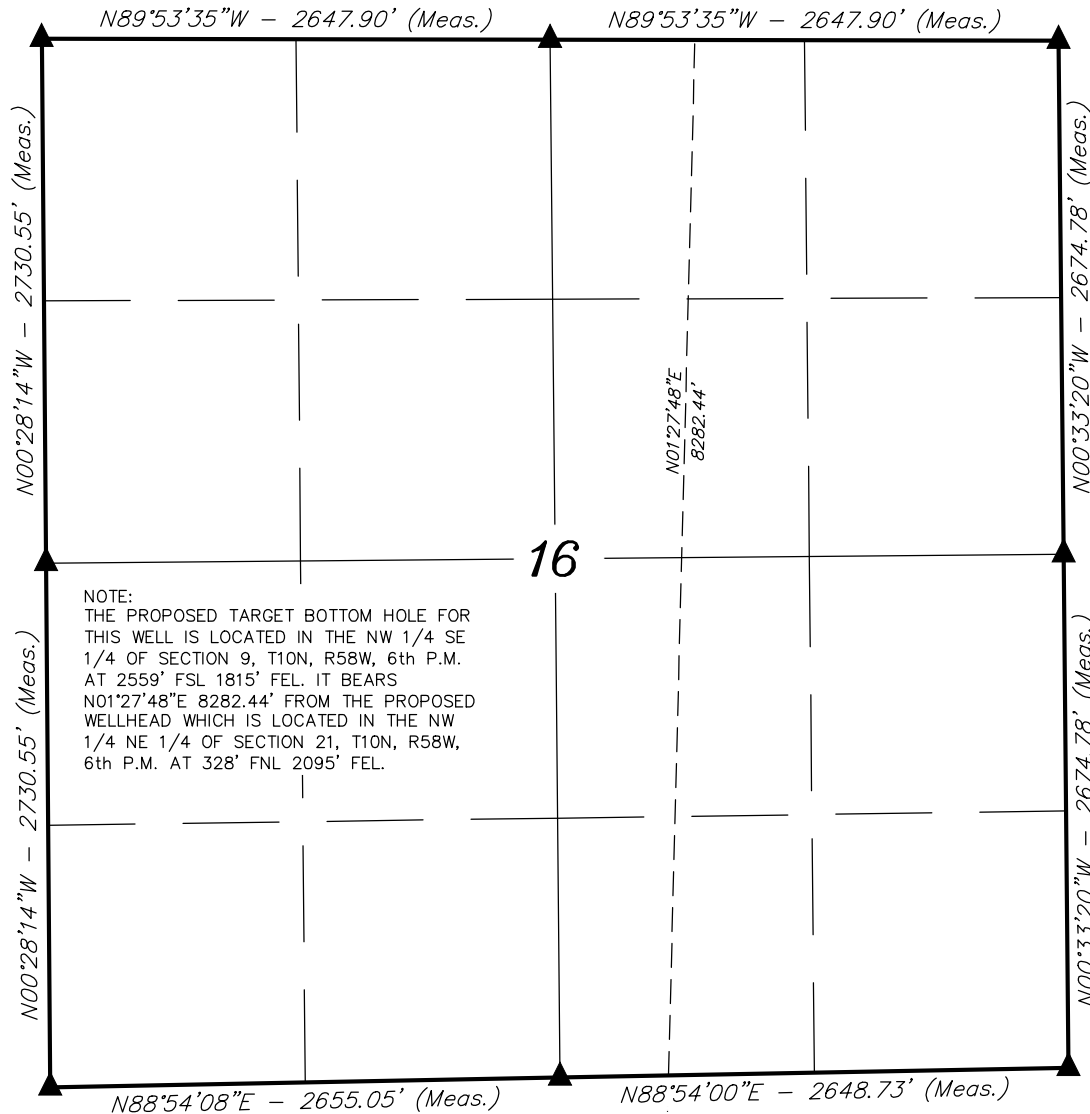
REGISTERED LAND SURVEYOR
REGISTRATION NO. 28285
STATE OF COLORADO
JERRY HARRIS

UINTAH ENGINEERING & LAND SURVEYING
85 SOUTH 200 EAST - VERNAL, UTAH 84078
(435) 789-1017

SCALE 1" = 1000'	DATE SURVEYED: 02-22-13	DATE DRAWN: 03-01-13
PARTY JERREMY HARRIS C.M. A.D.	REFERENCES G.L.O. PLAT	
WEATHER COLD	FILE	WHITING OIL & GAS CORP.

T10N, R58W, 6th P.M.

RAZOR #21B-0911
Target Bottom Hole



NOTE:
THE PROPOSED TARGET BOTTOM HOLE FOR
THIS WELL IS LOCATED IN THE NW 1/4 SE
1/4 OF SECTION 9, T10N, R58W, 6th P.M.
AT 2559' FSL 1815' FEL. IT BEARS
N01°27'48\"E 8282.44' FROM THE PROPOSED
WELLHEAD WHICH IS LOCATED IN THE NW
1/4 NE 1/4 OF SECTION 21, T10N, R58W,
6th P.M. AT 328' FNL 2095' FEL.

RAZOR #21B-0911
Surface Location

LEGEND:

- └─┘ = 90° SYMBOL
● = PROPOSED WELL HEAD.
▲ = SECTION CORNERS LOCATED.

NAD 83 (TARGET BOTTOM HOLE)	NAD 83 (SURFACE LOCATION)
LATITUDE = 40°51'10.51" (40.852919)	LATITUDE = 40°49'48.72" (40.830200)
LONGITUDE = 103°52'04.34" (103.867872)	LONGITUDE = 103°52'07.06" (103.868628)
NAD 27 (TARGET BOTTOM HOLE)	NAD 27 (SURFACE LOCATION)
LATITUDE = 40°51'10.56" (40.852933)	LATITUDE = 40°49'48.77" (40.830214)
LONGITUDE = 103°52'02.53" (103.867369)	LONGITUDE = 103°52'05.25" (103.868125)

WHITING OIL & GAS CORP.

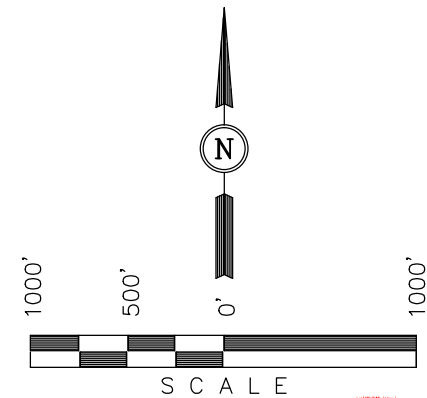
Well location, RAZOR #21B-0911, located in the
NW 1/4 NE 1/4 of Section 21, T10N, R58W, 6th
P.M., Weld County, Colorado.

BASIS OF ELEVATION

SPOT ELEVATION LOCATED AT THE NORTHEAST CORNER OF
SECTION 15, T9N, R58W, 6th P.M. TAKEN FROM THE
GATEHOOK SPRING, QUADRANGLE, COLORADO, WELD COUNTY,
7.5 MINUTE QUAD (TOPOGRAPHIC MAP) PUBLISHED BY THE
UNITED STATES DEPARTMENT OF THE INTERIOR, GEOLOGICAL
SURVEY. SAID ELEVATION IS MARKED AS BEING 4679 FEET.

BASIS OF BEARINGS

BASIS OF BEARINGS IS A G.P.S. OBSERVATION.



CERTIFICATE

THIS IS TO CERTIFY THAT THE ABOVE PLAT WAS PREPARED FROM
FIELD NOTES OF ACTUAL SURVEYS MADE BY ME OR UNDER MY
SUPERVISION AND THAT THE SAME ARE TRUE AND CORRECT TO THE
BEST OF MY KNOWLEDGE AND BELIEF.

REVISION: 05-21-14 K.B.
REVISION: 03-19-14 J.S.
REVISION: 03-07-14 H.K.W.
REVISION: 04-04-13

REGISTERED LAND SURVEYOR
REGISTRATION NO. 28285
STATE OF COLORADO
JEREMY HARRIS

UINTAH ENGINEERING & LAND SURVEYING
85 SOUTH 200 EAST - VERNAL, UTAH 84078
(435) 789-1017

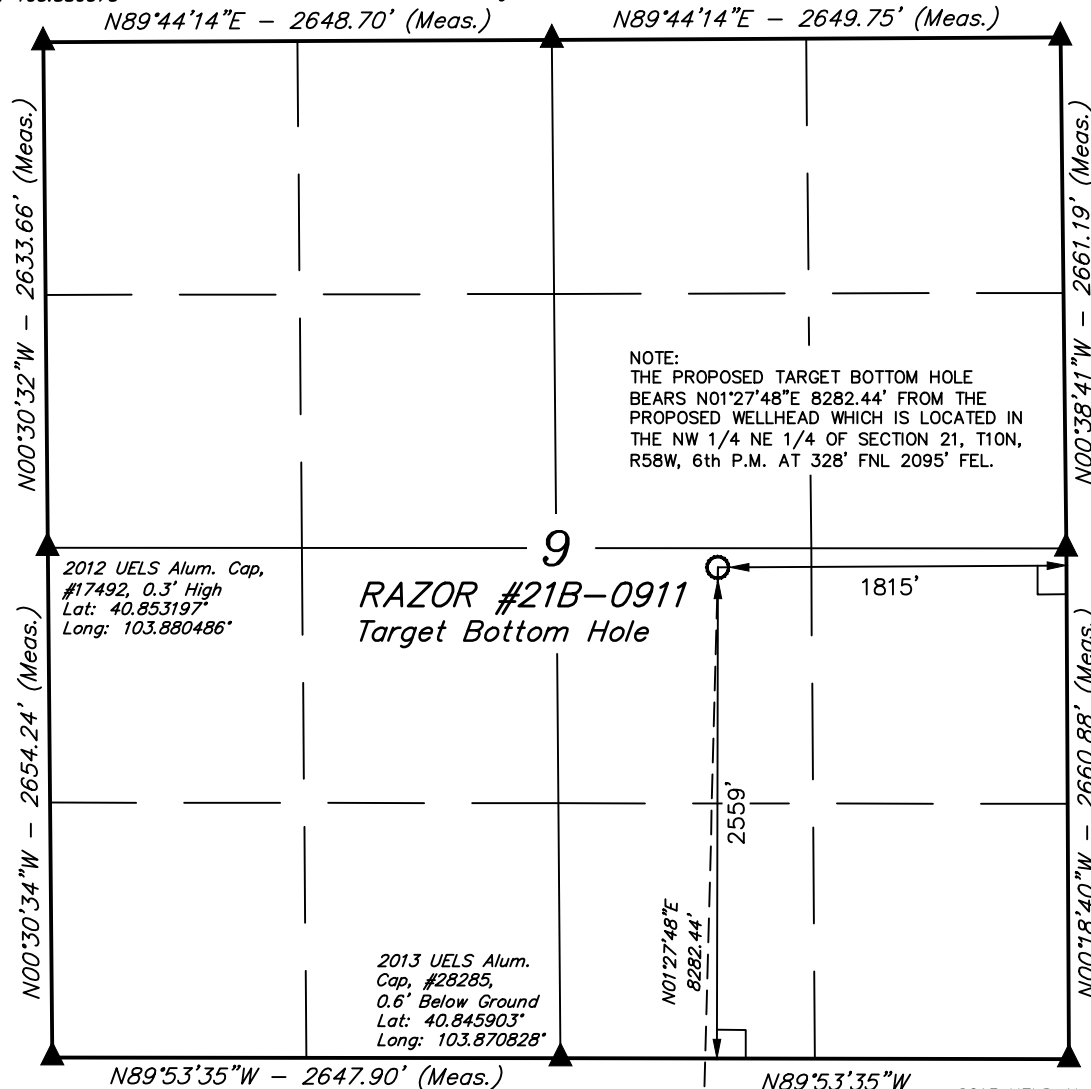
SCALE 1" = 1000'	DATE SURVEYED: 02-22-13	DATE DRAWN: 03-01-13
PARTY JEREMY HARRIS C.M. A.D.	REFERENCES G.L.O. PLAT	
WEATHER COLD	FILE	WHITING OIL & GAS CORP.

T10N, R58W, 6th P.M.

2012 UELS Alum. Cap,
#17492, 0.3' High
Lat: 40.860422°
Long: 103.880575°

2013 UELS Alum. Cap,
#28285, 0.3' High
Lat: 40.860461°
Long: 103.871003°

2013 UELS Alum. Cap,
#28285, 0.5' Below Ground
Lat: 40.860494°
Long: 103.861425°



NOTE:
THE PROPOSED TARGET BOTTOM HOLE
BEARS N01°27'48\"/>

RAZOR #21B-0911
Target Bottom Hole

2013 UELS Alum. Cap,
#28285, 0.5' Below Ground
Lat: 40.853194°
Long: 103.861314°

2013 UELS Alum.
Cap, #28285,
0.6' Below Ground
Lat: 40.845903°
Long: 103.870828°

2011 UELS Alum. Cap,
#17492, 0.5' Below Road
Lat: 40.845914°
Long: 103.880397°

2013 UELS Alum. Cap,
#28285, 0.3' High
Lat: 40.845892°
Long: 103.861261°

Surface Location

LEGEND:

- └─┘ = 90° SYMBOL
- = PROPOSED WELL HEAD.
- ▲ = SECTION CORNERS LOCATED.

NAD 83 (TARGET BOTTOM HOLE)
LATITUDE = 40°51'10.51\"/>

WHITING OIL & GAS CORP.

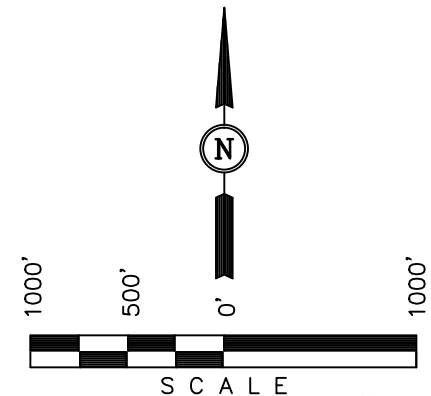
Well location, RAZOR #21B-0911 (TARGET BOTTOM HOLE), located as shown in the NW 1/4 SE 1/4 of Section 9, T10N, R58W, 6th P.M., Weld County, Colorado.

BASIS OF ELEVATION

SPOT ELEVATION LOCATED AT THE NORTHEAST CORNER OF SECTION 15, T9N, R58W, 6th P.M. TAKEN FROM THE GATEHOOK SPRING, QUADRANGLE, COLORADO, WELD COUNTY, 7.5 MINUTE QUAD (TOPOGRAPHIC MAP) PUBLISHED BY THE UNITED STATES DEPARTMENT OF THE INTERIOR, GEOLOGICAL SURVEY. SAID ELEVATION IS MARKED AS BEING 4679 FEET.

BASIS OF BEARINGS

BASIS OF BEARINGS IS A G.P.S. OBSERVATION.



CERTIFICATE

THIS IS TO CERTIFY THAT THE ABOVE PLAT WAS PREPARED FROM FIELD NOTES OF ACTUAL SURVEYS MADE BY ME OR UNDER MY SUPERVISION AND THAT THE SAME ARE TRUE AND CORRECT TO THE BEST OF MY KNOWLEDGE AND BELIEF.

REVISION: 03-19-14 J.S.
REVISION: 03-07-14 H.K.W.
REVISION: 04-04-13
REVISION: 03-21-13

REGISTERED LAND SURVEYOR
REGISTRATION NO. 28285
STATE OF COLORADO
JEREMY HARRIS

UINTAH ENGINEERING & LAND SURVEYING
85 SOUTH 200 EAST - VERNAL, UTAH 84078
(435) 789-1017

SCALE 1" = 1000'	DATE SURVEYED: 02-22-13	DATE DRAWN: 03-01-13
PARTY JEREMY HARRIS C.M. A.D.	REFERENCES G.L.O. PLAT	
WEATHER COLD	FILE	WHITING OIL & GAS CORP.