

WPX ENERGY ROCKY MOUNTAIN LLC-EBUS

Federal RG 312-14-298

**Cyclone 29**

## **Post Job Summary**

### **Cement Two-Stage Surface Casing**

Date Prepared: 05/21/2014  
Job Date: 01/16/2014

Submitted by: Evan Russell - Cement Engineer

## The Road to Excellence Starts with Safety

Sold To #: 300721	Ship To #: 3124393	Quote #:	Sales Order #: 901045861
Customer: WPX ENERGY ROCKY MOUNTAIN LLC-EBUS		Customer Rep: Brunk, Andrew	
Well Name: RG		Well #: 312-14-298	API/UWI #: 05-103-11791
Field: SULFUR CREEK	City (SAP): MEEKER	County/Parish: Rio Blanco	State: Colorado
Contractor: CYCLONE 29		Rig/Platform Name/Num: Cyclone 29	
Job Purpose: Cement Multiple Stages			
Well Type: Development Well		Job Type: Cement Multiple Stages	
Sales Person: MAYO, MARK		Srvc Supervisor: CARTER, ERIC	MBU ID Emp #: 345598

## Job Personnel

HES Emp Name	Exp Hrs	Emp #	HES Emp Name	Exp Hrs	Emp #	HES Emp Name	Exp Hrs	Emp #
CAMPBELL, DAVID Arthur	0.0	544403	CARTER, ERIC Earl	0.0	345598	LOBATO, MAX Abraham	0.0	555409
SCHANZ, ANDREW Jacob	0.0	544399						

## Equipment

HES Unit #	Distance-1 way	HES Unit #	Distance-1 way	HES Unit #	Distance-1 way	HES Unit #	Distance-1 way
10867423	60 mile	10872429	60 mile	11562538	60 mile	11583933	60 mile
11808847	60 mile						

## Job Hours

Date	On Location Hours	Operating Hours	Date	On Location Hours	Operating Hours	Date	On Location Hours	Operating Hours

TOTAL	Total is the sum of each column separately							
-------	--	--	--	--	--	--	--	--

## Job

## Job Times

Formation Name					Date	Time	Time Zone
Formation Depth (MD)	Top		Bottom		Called Out	16 - Jan - 2014	08:00 MST
Form Type	BHST				On Location	16 - Jan - 2014	15:00 MST
Job depth MD	3167. ft		Job Depth TVD	3167. ft	Job Started	16 - Jan - 2014	18:21 MST
Water Depth			Wk Ht Above Floor	5. ft	Job Completed	16 - Jan - 2014	21:32 MST
Perforation Depth (MD)	From		To		Departed Loc	16 - Jan - 2014	23:30 MST

## Well Data

Description	New / Used	Max pressure psig	Size in	ID in	Weight lbm/ft	Thread	Grade	Top MD ft	Bottom MD ft	Top TVD ft	Bottom TVD ft
OPEN HOLE				13.5				1204.	3167.		
OPEN HOLE				14.75				.	1204.		
MSC	Unknown		9.625	.				1271.	1271.		
SURFACE CASING	Unknown		9.625	8.921	36.		J-55	.	3167.		

## Tools and Accessories

Type	Size	Qty	Make	Depth	Type	Size	Qty	Make	Depth	Type	Size	Qty	Make
Guide Shoe					Packer					Top Plug			
Float Shoe					Bridge Plug					Bottom Plug			
Float Collar					Retainer					SSR plug set			
Insert Float										Plug Container			
Stage Tool										Centralizers			

## Miscellaneous Materials

Gelling Agt		Conc		Surfactant		Conc		Acid Type		Qty		Conc	%
Treatment Fld		Conc		Inhibitor		Conc		Sand Type		Size		Qty	

## Fluid Data

Stage/Plug #: 1													
Fluid #	Stage Type	Fluid Name			Qty	Qty uom	Mixing Density lbm/gal	Yield ft3/sk	Mix Fluid Gal/sk	Rate bbl/min	Total Mix Fluid Gal/sk		

1	Fresh Water Spacer		40.00	bbl	8.33	.0	.0	.0	
2	1st Stage HLC Lead Cement	ECONOCEM (TM) SYSTEM (452992)	805.0	sacks	12.8	1.77	9.34		9.34
	0.25 lbm	POLY-E-FLAKE (101216940)							
	0.35 %	HR-5, 50 LB SK (100005050)							
	9.34 Gal	FRESH WATER							
3	1st Stage Varicem Tail Cement	VARICEM (TM) CEMENT (452009)	265.0	sacks	12.8	1.96	10.95		10.95
	0.25 lbm	POLY-E-FLAKE (101216940)							
	10.95 Gal	FRESH WATER							
4	Displacement		243.00	bbl	8.33	.0	.0	.0	
5	Fresh Water Spacer		10.00	bbl	8.33	.0	.0	.0	
6	2nd Stage VariCem Cement	VARICEM (TM) CEMENT (452009)	735.0	sacks	12.8	1.96	10.95		10.95
	0.25 lbm	POLY-E-FLAKE (101216940)							
	10.95 Gal	FRESH WATER							
7	Displacement		98.00	bbl	8.33	.0	.0	.0	
Calculated Values		Pressures		Volumes					
Displacement		Shut In: Instant		Lost Returns		Cement Slurry		Pad	
Top Of Cement		5 Min		Cement Returns		Actual Displacement		Treatment	
Frac Gradient		15 Min		Spacers		Load and Breakdown		Total Job	
Rates									
Circulating		Mixing		Displacement		Avg. Job			
Cement Left In Pipe	Amount	22.2 ft	Reason	Shoe Joint					
Frac Ring # 1 @	ID		Frac ring # 2 @	ID		Frac Ring # 3 @	ID		Frac Ring # 4 @
The Information Stated Herein Is Correct				Customer Representative Signature					

*The Road to Excellence Starts with Safety*

<b>Sold To #:</b> 300721		<b>Ship To #:</b> 3124393		<b>Quote #:</b>		<b>Sales Order #:</b> 901045861	
<b>Customer:</b> WPX ENERGY ROCKY MOUNTAIN LLC-EBUS				<b>Customer Rep:</b> Brunk, Andrew			
<b>Well Name:</b> RG			<b>Well #:</b> 312-14-298			<b>API/UWI #:</b> 05-103-11791	
<b>Field:</b> SULFUR CREEK		<b>City (SAP):</b> MEEKER		<b>County/Parish:</b> Rio Blanco		<b>State:</b> Colorado	
<b>Legal Description:</b>							
<b>Lat:</b> N 0 deg. OR N 0 deg. 0 min. 0 secs.				<b>Long:</b> E 0 deg. OR E 0 deg. 0 min. 0 secs.			
<b>Contractor:</b> CYCLONE 29			<b>Rig/Platform Name/Num:</b> Cyclone 29				
<b>Job Purpose:</b> Cement Multiple Stages						<b>Ticket Amount:</b>	
<b>Well Type:</b> Development Well			<b>Job Type:</b> Cement Multiple Stages				
<b>Sales Person:</b> MAYO, MARK			<b>Srv Supervisor:</b> CARTER, ERIC			<b>MBU ID Emp #:</b> 345598	

Activity Description	Date/Time	Cht #	Rate bbl/min	Volume bbl		Pressure psig		Comments
				Stage	Total	Tubing	Casing	
Call Out	01/16/2014 08:00							
Depart Yard Safety Meeting	01/16/2014 11:50							ATTENDED BY ALL HES CREW
Crew Leave Yard	01/16/2014 12:00							
Arrive At Loc	01/16/2014 15:00							RIG READY
Comment	01/16/2014 16:00							CEMENT ARRIVED ON LOCATION AT 16:00. HES PROCEEDED TO UNLOAD CEMENT INTO SILO AND RIG UP EQUIPMENT.
Assessment Of Location Safety Meeting	01/16/2014 16:01							ATTENDED BY ALL HES CREW
Pre-Rig Up Safety Meeting	01/16/2014 16:10							ATTENDED BY ALL HES CREW
Rig-Up Equipment	01/16/2014 16:15							
Pre-Job Safety Meeting	01/16/2014 18:00							ATTENDED BY ALL HES CREW, RIG CREW, COMPANY REP AND ENGINEER
Activity Description	Date/Time	Cht #	Rate bbl/min	Volume bbl		Pressure psig		Comments
				Stage	Total	Tubing	Casing	

Start Job	01/16/2014 18:21							TP 3167', TD 3167', SJ 22.2', FC 3144.8', MW 9.1 PPG, CASING 9.625", 36#,J-55, MSC 1271', OPEN HOLE 14.75"-1204', 13.5-3167', 10 CENTRALIZERS, CEMENT BASKET AT 1240', RIG CIRCULATED FOR 5 HR'S PRIOR TO JOB AT 11 BPM
Other	01/16/2014 18:21		2	2			90.0	FILL LINES
Test Lines	01/16/2014 18:23							PRESSURED UP TO 3730 PSI, PRESSURE HELD
Pump Spacer	01/16/2014 18:29		5	40			200.0	FRESH WATER
Pump 1st Stage Lead Slurry	01/16/2014 18:42		8	253.8			570.0	805 SKS ECONOCEM MIXED AT 12.8 PPG, 1.77 YIELD, 9.34 GL/SK
Pump 1st Stage Tail Slurry	01/16/2014 19:15		8	92.5			530.0	265 SKS VARICEM MIXED AT 12.8 PPG, 1.96 YIELD, 10.95 GL/SK
Shutdown	01/16/2014 19:29							
Drop Plug	01/16/2014 19:31							PLUG LAUNCHED
Pump Displacement	01/16/2014 19:33		10	233.1			700.0	20 BBLS FRESH WATER/180 BBLS MUD AT 9.1 PPG/43.1 BBLS FRESH WATER
Slow Rate	01/16/2014 20:01		4	10			400.0	
Bump Plug	01/16/2014 20:03						670.0	PLUG LANDED
Check Floats	01/16/2014 20:05							FLOATS HELD
Drop Opening Device For Multiple Stage Cementer	01/16/2014 20:06							PLUG LAUNCHED
Open Multiple Stage Cementer	01/16/2014 20:19						550.0	MSC OPENED
Other	01/16/2014 20:19							BEGAN SECOND STAGE AT COMPANY REP'S REQUEST
Pump Spacer	01/16/2014 20:19		4	12			60.0	FRESH WATER, GAINED CIRCULATION
Activity Description	Date/Time	Cht #	Rate bbl/min	Volume bbl		Pressure psig		Comments
				Stage	Total	Tubing	Casing	

Sold To # : 300721

Ship To # : 3124393

Quote # :

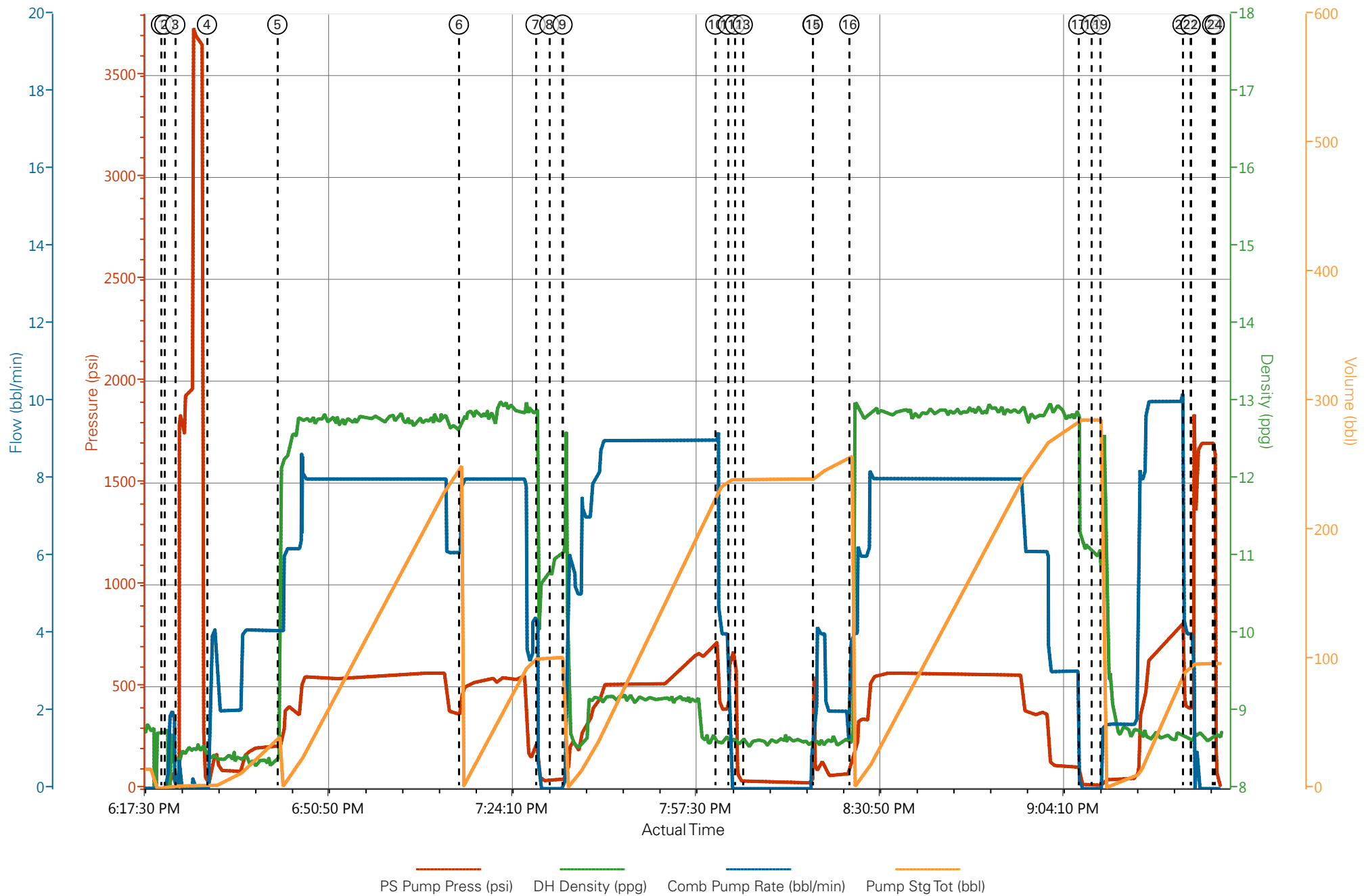
Sales Order # : 901045861

SUMMIT Version: 7.3.0109

Wednesday, May 21, 2014 02:40:00

Pump 2nd Stage Tail Slurry	01/16/2014 20:25		8	256.6			570.0	735 SKS VARICEM MIXED AT 12.8 PPG, 1.96 YIELD, 10.95 GL/SK, STARTED TO SEE TRACES OF CEMENT AT 240 BBLS TAIL CEMENT PUMPED.
Shutdown	01/16/2014 21:07							
Drop Plug	01/16/2014 21:09							PLUG LAUNCHED
Pump Displacement	01/16/2014 21:11		10	88.2			800.0	FRESH WATER
Slow Rate	01/16/2014 21:26		4	10			400.0	
Bump Plug	01/16/2014 21:27						1690. 0	PLUG LANDED
Close Multiple Stage Cementer	01/16/2014 21:27						1690. 0	
Check Floats	01/16/2014 21:31							FLOATS HELD
End Job	01/16/2014 21:32							DECENT CIRCULATION THROUGH OUT JOB, 100 BBLS CEMENT TO SURFACE, PIPE NOT MOVED DURING JOB
Post-Job Safety Meeting (Pre Rig-Down)	01/16/2014 21:35							ATTENDED BY ALL HES CREW
Rig-Down Equipment	01/16/2014 21:40							
Depart Location Safety Meeting	01/16/2014 23:20							ATTENDED BY ALL HES CREW
Crew Leave Location	01/16/2014 23:30							THANK YOU FOR USING HALLIBURTON CEMENT, ERIC CARTER AND CREW.

# WPX - RG 312-14-298 - MULTI STAGE SURFACE



# HALLIBURTON

## Water Analysis Report

Company: WPX  
Submitted by: ERIC CARTER  
Attention: J.Trout  
Lease: CYCLONE 29  
Well #: RG 312-14-298

Date: 5/21/2014  
Date Rec.: 5/21/2014  
S.O.#: 901045861  
Job Type: SURFACE

Specific Gravity	<i>MAX</i>	<i>1</i>
pH	<i>8</i>	<i>7</i>
Potassium (K)	<i>5000</i>	<i>0</i> Mg / L
Hrdness	<i>500</i>	<i>425</i> Mg / L
Iron (FE2)	<i>300</i>	<i>0</i> Mg / L
Chlorides (Cl)	<i>3000</i>	<i>0</i> Mg / L
Sulfates (SO <sub>4</sub> )	<i>1500</i>	<i>&lt;200</i> Mg / L
Temp	<i>40-80</i>	<i>80</i> Deg
Total Dissolved Solids		<i>1100</i> Mg / L

Respectfully: ERIC CARTER

Title: CEMENTING SUPERVISOR

Location: Grand Junction, CO

NOTICE: This report is limited to the described sample tested. Any person using or relying on this report agrees that Halliburton shall not be liable for any loss or damage whether due to act or omission resulting from such report.