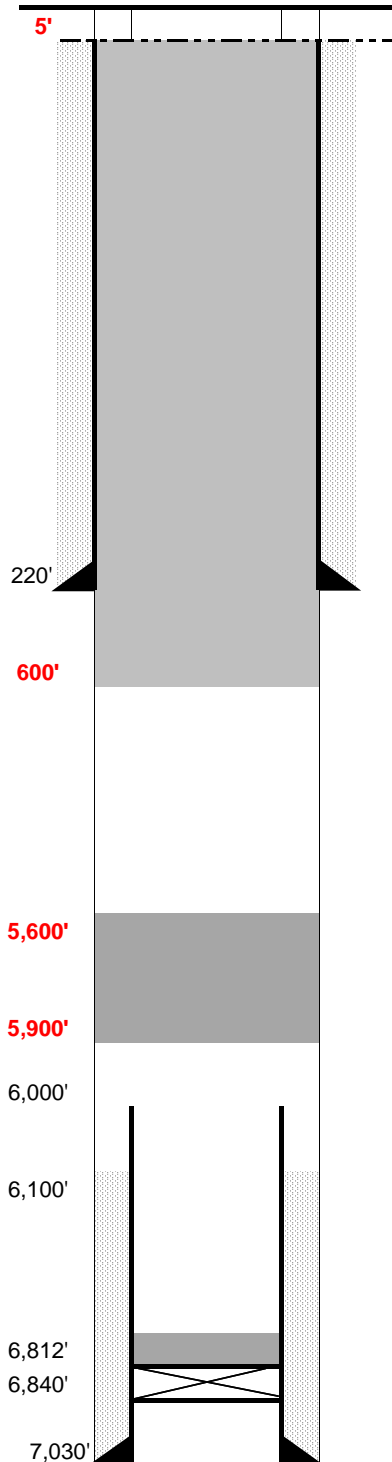


**WELL NAME:** Weitzel #1-3  
**OPERATOR:** Dakota Energy Resources  
**COMP ZONE:** J Sand  
**LOCATION:** 7N 60W S3 NE NE

**COUNTY:** Weld  
**STATE:** Colorado  
**API :** 05-123-14473  
**GL/KB:** 4920

**SPUD:** 3/24/91  
**COMP:** \_\_\_\_\_  
**ABDN:** 5/14/91  
**COGCC:** PA



**SURFACE CASING**

DEPTH: 220' SIZE: 8.625" GRADE: \_\_\_\_\_ WT (#/ft): 24.0  
 CEMENT: 130 sx  
 COMMENTS: \_\_\_\_\_

**PRODUCTION CASING**

DEPTH: 7,030' SIZE: 4.5" GRADE: J-55 WT (#/ft): 11.6#  
 CEMENT: 200 sx 50/50 POZ TOC: 6,100' est  
 COMMENTS: \_\_\_\_\_

PERFS: 6,938' - 6,960' PROD ZONE 1: J Sand  
 PERFS: \_\_\_\_\_ - \_\_\_\_\_ ZONE 2: \_\_\_\_\_  
 PERFS: \_\_\_\_\_ - \_\_\_\_\_ ZONE 3: \_\_\_\_\_

**PREVIOUS PLUGS**

ZONE 1 CIBP: 6,840' CMT: 2 sx OTHER: \_\_\_\_\_  
 2 CIBP: \_\_\_\_\_ CMT: \_\_\_\_\_ OTHER: \_\_\_\_\_  
 3 CIBP: \_\_\_\_\_ CMT: \_\_\_\_\_ OTHER: \_\_\_\_\_

RECOVERED: 6,000' SIZE: 4.5"  
 CMT 1: 6,840' - 6,812' COMMENT: 2 sx cement on CIBP  
 CMT 2: 520' - 170' COMMENT: 66 sx Halliburton Lite  
 CMT 3: \_\_\_\_\_ - \_\_\_\_\_ COMMENT: \_\_\_\_\_

PROPOSED Plug #1: 100 sx cement from 5,900' to 5,600' (on top of csg stub)  
Plug #2: Cement plug from 600' to surface (Isolate FW zones)

**FORMATIONS:**

FOX HILLS: \_\_\_\_\_  
 NIOBRARA: 6,108'  
 CODELL: \_\_\_\_\_  
 D SAND: 6,848'  
 J SAND: 6,912'