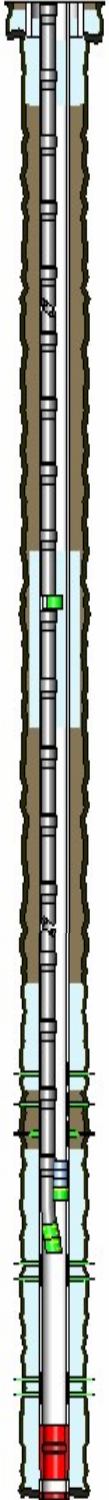


KERR-MCGEE OIL AND GAS ONSHORE LP
LECLERG VC GU 1
SW NE 22 3N 68W 1,650' FNL 1,560' FEL
WELD,COLORADO
05/23/2014

AREA: W2 ROUTE: W21 Spud: 04/28/1975 WINS No.: 74283 AFE/WO#: 88488147 API#: 0512308392

GL: 4970 KB: 4980 MTD: 7898 TVD: 7898 LOG MD: PBMD: 7830 PBTVD: 7830

Directions: HWY 66 & CR 7, N TO ADAMS ST., E 7/10, S 2/10, E INTO.



<u>HOLE SECTIONS</u>	<u>Size</u>	<u>Top</u>	<u>Btm</u>	<u>TD Date</u>			
SURFACE	12.25	10	235	04/28/1975			
PRODUCTION	7.88	235	7900	05/07/1975			
<u>TUBULARS</u>	<u>Tool Type</u>	<u>Joints</u>	<u>Size</u>	<u>Weight</u>	<u>Grade</u>	<u>Thread</u>	<u>Top D</u> <u>Bottom D</u>
SURFACE CASING	Casing		8.63	24			10 235
PRODUCTION CASING	Casing	203	4.50	10.50	K-55		10 7874
	Casing Float Collar	1	4.50				7874 7875
	Casing	1	4.50	10.50	K-55		7875 7907
	Casing Guide Shoe	1	4.50				7907 7908
PRODUCTION TUBING	Tubing	234	2.38	4.7	J-55		10 7286
	Seating Nipple	1	2.38				7286 7287
	Notched Collar	1	2.38				7287 7288
PRODUCTION TUBING	Tubing	128	2.38	4.70	J-55	External-Ups	10 3993
	Production	1	2.38				3993 3999
	Tubing	53	2.38	4.70	J-55	External-Ups	3999 7297
	XN Profile Nipple	1	2.38				7297 7298
	Notched Collar	1	2.38				7298 7298
<u>CEMENT JOBS</u>	<u>Stage</u>	<u>Sacks</u>	<u>Cement Jobs</u>	<u>Top D</u>	<u>Btm D</u>	<u>cbl</u>	
SURFACE CASING	STAGE 1	250	G	50	235	No	
PRODUCTION CASING	SQUEEZE 1	170	G	6506	7090	Yes	
	STAGE 1			7200	7909	Yes	
SURFACE CASING	REMEDIAL CEMENT	590	LEAD FRESH WATER	3698	4800	No	
SURFACE CASING	REMEDIAL CEMENT	180	LEAD FRESH WATER	259	700	No	
PRODUCTION CASING	REMEDIAL CEMENT	180	LEAD FRESH WATER	122	620	No	
PRODUCTION CASING	REMEDIAL CEMENT	15	LEAD FRESH WATER	450	685	No	
PRODUCTION CASING	REMEDIAL CEMENT	20	LEAD FRESH WATER	450	686	No	
PRODUCTION CASING	REMEDIAL CEMENT	20	LEAD FRESH WATER	450	686	No	
<u>PERFORATIONS</u>	<u>Formation</u>	<u>Zone</u>	<u>Top</u>	<u>Btm</u>	<u>Date</u>	<u>Reason</u>	<u>Comments</u>
			620	621	04/16/2014	CEMENT SQUEEZE	
	NIOBRARA		7044	7059	01/12/1997	PRODUCTION	
			7090	7091	01/02/1997	CEMENT SQUEEZE	
	NIOBRARA		7107	7122	01/12/1997	PRODUCTION	
	NIOBRARA		7168	7173	01/12/1997	PRODUCTION	
	CODELL		7313	7328	01/12/1997	PRODUCTION	
	CODELL		7313	7328	10/24/2005	PRODUCTION	
	J SAND		7758	7783	06/08/1975	PRODUCTION	

KERR-MCGEE OIL AND GAS ONSHORE LP

LECLERG VC GU 1

SW NE 22 3N 68W 1,650' FNL 1,560' FEL

WELD,COLORADO

05/23/2014

AREA: W2

ROUTE: W21 Spud: 04/28/1975

WINS No.: 74283

AFE/WO#: 88488147

API#: 0512308392

GL: 4970

KB: 4980

MTD: 7898

TVD: 7898

LOG MD:

PBMD: 7830

PBTVD: 7830

Directions: HWY 66 & CR 7, N TO ADAMS ST., E 7/10, S 2/10, E INTO.

Comments: