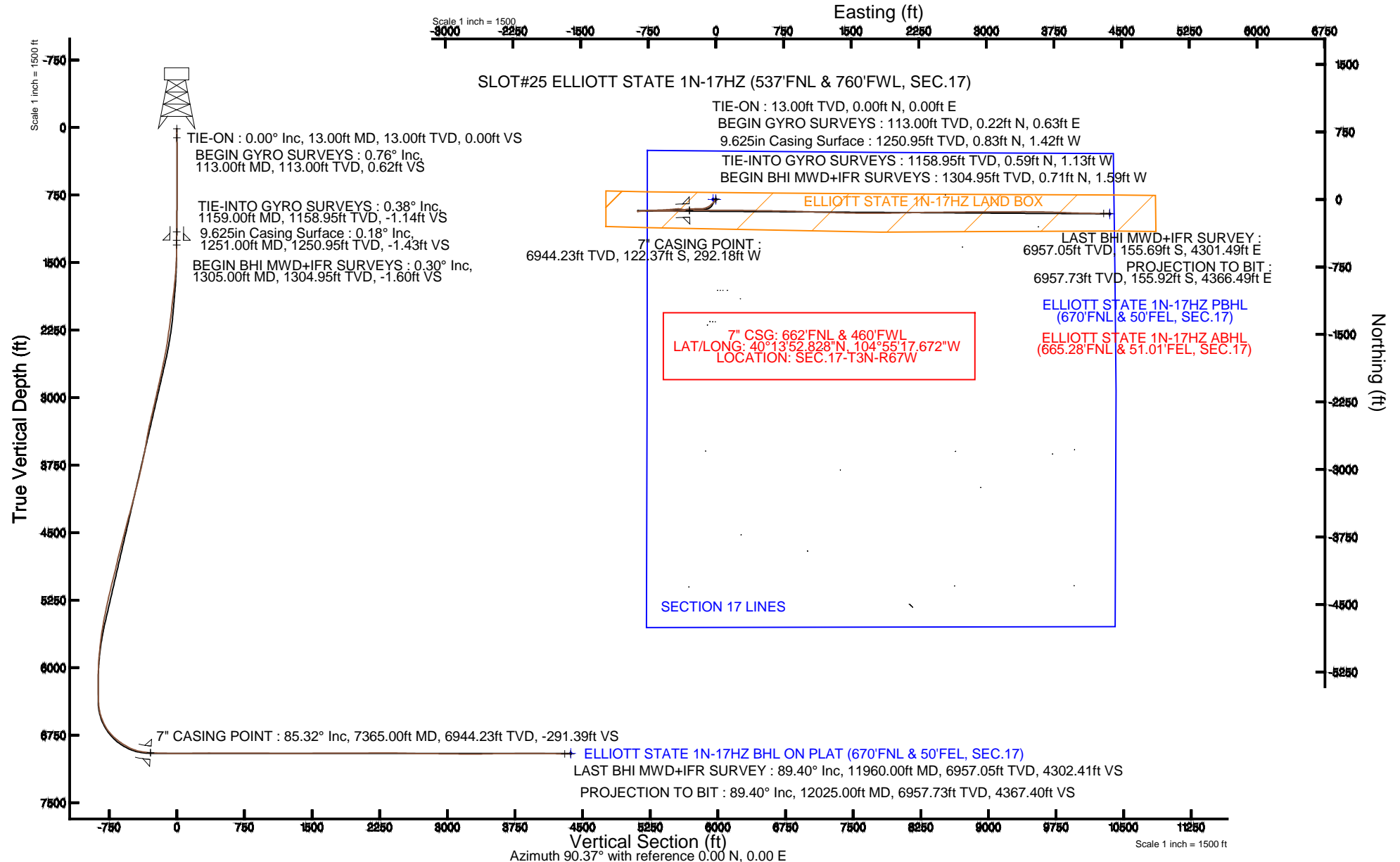


KERR-MCGEE OIL & GAS ONSHORE LP

Location: COLORADO Slot: SLOT#25 ELLIOTT STATE 1N-17HZ (537'FNL & 760'FWL, SEC.17)
 Field: WELD COUNTY (KERR MCGEE) Well: ELLIOTT STATE 1N-17HZ
 Facility: SEC.17-T3N-R67W Wellbore: ELLIOTT STATE 1N-17HZ PWB

Plot reference wellpath is ELLIOTT STATE 1N-17HZ (REV-A.0) PWP

True vertical depths are referenced to ENSIGN 138 (13' RKB) (RKB)	Grid System: NAD83 / Lambert Colorado SP, Northern Zone (501), US feet
Measured depths are referenced to ENSIGN 138 (13' RKB) (RKB)	North Reference: True north
ENSIGN 138 (13' RKB) (RKB) to Mean Sea Level: 4849 feet	Scale: True distance
Mean Sea Level to Mud line (At Slot: SLOT#25 ELLIOTT STATE 1N-17HZ (537'FNL & 760'FWL, SEC.17)): 0 feet	Depths are in feet
Coordinates are in feet referenced to Slot	Created by: wilsjef02 on 4/30/2014





Actual Wellpath Report

ELLIOTT STATE 1N-17HZ AWP

Page 1 of 5



REFERENCE WELLPATH IDENTIFICATION

Operator	KERR-MCGEE OIL & GAS ONSHORE LP	Slot	SLOT#25 ELLIOTT STATE 1N-17HZ (537'FNL & 760'FWL, SEC.17)
Area	COLORADO	Well	ELLIOTT STATE 1N-17HZ
Field	WELD COUNTY (KERR MCGEE)	Wellbore	ELLIOTT STATE 1N-17HZ AWB
Facility	SEC.17-T3N-R67W		

REPORT SETUP INFORMATION

Projection System	NAD83 / Lambert Colorado SP, Northern Zone (501), US feet	Software System	WellArchitect® 4.0.0
North Reference	True	User	Wilsjef02
Scale	0.999957	Report Generated	4/30/2014 at 2:57:57 PM
Convergence at slot	n/a	Database/Source file	WellArchitectDB/ELLIOTT_STATE_1N-17HZ_AWB.xml

WELLPATH LOCATION

	Local coordinates		Grid coordinates		Geographic coordinates	
	North[ft]	East[ft]	Easting[US ft]	Northing[US ft]	Latitude	Longitude
Slot Location	1026.24	-125.37	3161788.23	1327770.51	40°13'54.037"N	104°55'13.904"W
Facility Reference Pt			3161920.30	1326745.17	40°13'43.896"N	104°55'12.288"W
Field Reference Pt			3197771.84	1268891.29	40°04'09.600"N	104°47'36.000"W

WELLPATH DATUM

Calculation method	Minimum curvature	ENSIGN 138 (13' RKB) (RKB) to Facility Vertical Datum	4849.00ft
Horizontal Reference Pt	Slot	ENSIGN 138 (13' RKB) (RKB) to Mean Sea Level	4849.00ft
Vertical Reference Pt	ENSIGN 138 (13' RKB) (RKB)	ENSIGN 138 (13' RKB) (RKB) to Mud Line at Slot (SLOT#25 ELLIOTT STATE 1N-17HZ (537'FNL & 760'FWL, SEC.17))	4849.00ft
MD Reference Pt	ENSIGN 138 (13' RKB) (RKB)	Section Origin	N 0.00, E 0.00 ft
Field Vertical Reference	Mean Sea Level	Section Azimuth	92.05°

Actual Wellpath Report

ELLIOTT STATE 1N-17HZ AWP

Page 2 of 5

REFERENCE WELLPATH IDENTIFICATION

Operator	KERR-MCGEE OIL & GAS ONSHORE LP	Slot	SLOT#25 ELLIOTT STATE 1N-17HZ (537'FNL & 760'FWL, SEC.17)
Area	COLORADO	Well	ELLIOTT STATE 1N-17HZ
Field	WELD COUNTY (KERR MCGEE)	Wellbore	ELLIOTT STATE 1N-17HZ AWB
Facility	SEC.17-T3N-R67W		

WELLPATH DATA (97 stations) † = interpolated/extrapolated station

MD [ft]	Inclination [°]	Azimuth [°]	TVD [ft]	Vert Sect [ft]	North [ft]	East [ft]	Latitude	Longitude	DLS [°/100ft]	Comments
0.00†	0.000	70.810	0.00	0.00	0.00	0.00	40°13'54.037"N	104°55'13.904"W	0.00	
13.00	0.000	70.810	13.00	0.00	0.00	0.00	40°13'54.037"N	104°55'13.904"W	0.00	TIE-ON
113.00	0.760	70.810	113.00	0.62	0.22	0.63	40°13'54.039"N	104°55'13.896"W	0.76	BEGIN GYRO SURVEYS
213.00	0.720	79.090	212.99	1.85	0.55	1.87	40°13'54.043"N	104°55'13.880"W	0.11	
313.00	0.570	118.620	312.98	2.91	0.44	2.92	40°13'54.042"N	104°55'13.867"W	0.46	
413.00	0.420	199.620	412.98	3.24	-0.15	3.24	40°13'54.036"N	104°55'13.863"W	0.65	
513.00	0.410	259.520	512.98	2.78	-0.56	2.76	40°13'54.032"N	104°55'13.869"W	0.41	
613.00	0.710	306.660	612.97	1.92	-0.25	1.91	40°13'54.035"N	104°55'13.880"W	0.53	
713.00	0.580	12.890	712.97	1.51	0.61	1.53	40°13'54.043"N	104°55'13.885"W	0.71	
813.00	0.240	151.140	812.97	1.71	0.92	1.74	40°13'54.046"N	104°55'13.882"W	0.78	
913.00	0.610	246.870	912.96	1.33	0.53	1.35	40°13'54.042"N	104°55'13.887"W	0.68	
1013.00	0.610	263.470	1012.96	0.33	0.26	0.34	40°13'54.040"N	104°55'13.900"W	0.18	
1113.00	0.710	286.670	1112.95	-0.80	0.37	-0.79	40°13'54.041"N	104°55'13.915"W	0.28	
1159.00	0.380	331.240	1158.95	-1.15	0.59	-1.13	40°13'54.043"N	104°55'13.919"W	1.12	TIE-INTO GYRO SURVEYS
1305.00	0.300	216.500	1304.95	-1.62	0.71	-1.59	40°13'54.044"N	104°55'13.925"W	0.39	BEGIN BHI MWD+IFR SURVEYS
1398.00	2.500	206.400	1397.92	-2.59	-1.31	-2.64	40°13'54.024"N	104°55'13.938"W	2.37	
1492.00	4.700	213.100	1491.73	-5.42	-6.37	-5.65	40°13'53.974"N	104°55'13.977"W	2.38	
1588.00	6.900	216.900	1587.23	-10.75	-14.28	-11.27	40°13'53.896"N	104°55'14.050"W	2.33	
1679.00	8.400	220.000	1677.42	-17.96	-23.74	-18.82	40°13'53.803"N	104°55'14.147"W	1.71	
1770.00	9.900	224.500	1767.26	-27.33	-34.41	-28.58	40°13'53.697"N	104°55'14.273"W	1.83	
1954.00	9.300	223.800	1948.68	-47.91	-56.42	-49.95	40°13'53.480"N	104°55'14.548"W	0.33	
2137.00	8.800	235.900	2129.42	-69.06	-74.95	-71.78	40°13'53.297"N	104°55'14.830"W	1.07	
2321.00	8.300	245.200	2311.38	-92.28	-88.41	-95.49	40°13'53.164"N	104°55'15.136"W	0.80	
2412.00	9.500	250.700	2401.28	-105.13	-93.65	-108.55	40°13'53.112"N	104°55'15.304"W	1.62	
2503.00	10.800	254.400	2490.86	-120.25	-98.42	-123.85	40°13'53.065"N	104°55'15.501"W	1.60	
2595.00	12.000	260.200	2581.05	-137.83	-102.37	-141.57	40°13'53.026"N	104°55'15.730"W	1.80	
2686.00	11.500	270.800	2670.15	-156.16	-103.85	-159.97	40°13'53.011"N	104°55'15.967"W	2.43	
2778.00	12.600	270.100	2760.12	-175.36	-103.71	-179.17	40°13'53.012"N	104°55'16.215"W	1.21	
2961.00	12.700	268.500	2938.68	-215.38	-104.20	-219.24	40°13'53.008"N	104°55'16.731"W	0.20	
3144.00	12.900	269.200	3117.13	-255.86	-105.01	-259.78	40°13'52.999"N	104°55'17.254"W	0.14	
3326.00	13.200	264.100	3294.44	-296.74	-107.43	-300.76	40°13'52.976"N	104°55'17.782"W	0.65	
3515.00	9.000	259.100	3479.86	-332.53	-112.44	-336.76	40°13'52.926"N	104°55'18.246"W	2.28	
3702.00	12.200	282.900	3663.74	-366.22	-110.80	-370.41	40°13'52.942"N	104°55'18.680"W	2.87	
3891.00	13.100	274.100	3848.16	-407.24	-104.81	-411.24	40°13'53.001"N	104°55'19.207"W	1.12	
3985.00	14.300	263.900	3939.50	-429.38	-105.28	-433.41	40°13'52.997"N	104°55'19.493"W	2.86	
4080.00	14.000	263.900	4031.62	-452.37	-107.75	-456.51	40°13'52.972"N	104°55'19.790"W	0.32	
4175.00	15.000	265.200	4123.59	-475.95	-110.00	-480.18	40°13'52.950"N	104°55'20.096"W	1.11	
4270.00	14.600	266.100	4215.44	-500.07	-111.84	-504.38	40°13'52.932"N	104°55'20.408"W	0.49	
4364.00	15.900	267.200	4306.13	-524.68	-113.28	-529.06	40°13'52.918"N	104°55'20.726"W	1.42	
4554.00	14.000	265.000	4489.69	-573.43	-116.55	-577.96	40°13'52.885"N	104°55'21.356"W	1.04	
4744.00	14.700	268.800	4673.76	-620.31	-119.06	-624.96	40°13'52.861"N	104°55'21.962"W	0.62	
4935.00	12.700	267.100	4859.32	-665.43	-120.63	-670.16	40°13'52.845"N	104°55'22.545"W	1.07	
5030.00	13.600	269.400	4951.83	-686.99	-121.27	-691.76	40°13'52.839"N	104°55'22.823"W	1.10	
5125.00	14.600	269.900	5043.97	-710.11	-121.41	-714.90	40°13'52.837"N	104°55'23.122"W	1.06	
5219.00	13.000	270.800	5135.25	-732.52	-121.28	-737.32	40°13'52.839"N	104°55'23.411"W	1.72	

Actual Wellpath Report

ELLIOTT STATE 1N-17HZ AWP

Page 3 of 5

REFERENCE WELLPATH IDENTIFICATION

Operator	KERR-MCGEE OIL & GAS ONSHORE LP	Slot	SLOT#25 ELLIOTT STATE 1N-17HZ (537'FNL & 760'FWL, SEC.17)
Area	COLORADO	Well	ELLIOTT STATE 1N-17HZ
Field	WELD COUNTY (KERR MCGEE)	Wellbore	ELLIOTT STATE 1N-17HZ AWB
Facility	SEC.17-T3N-R67W		

WELLPATH DATA (97 stations) † = interpolated/extrapolated station

MD [ft]	Inclination [°]	Azimuth [°]	TVD [ft]	Vert Sect [ft]	North [ft]	East [ft]	Latitude	Longitude	DLS [°/100ft]	Comments
5313.00	13.200	266.100	5226.81	-753.77	-121.87	-758.60	40°13'52.833"N	104°55'23.685"W	1.15	
5408.00	11.600	263.300	5319.59	-774.00	-123.72	-778.91	40°13'52.814"N	104°55'23.947"W	1.80	
5502.00	11.500	266.600	5411.69	-792.67	-125.38	-797.65	40°13'52.798"N	104°55'24.189"W	0.71	
5596.00	10.300	262.800	5503.99	-810.29	-126.99	-815.34	40°13'52.782"N	104°55'24.417"W	1.49	
5692.00	9.200	259.300	5598.60	-826.25	-129.49	-831.40	40°13'52.757"N	104°55'24.624"W	1.30	
5786.00	6.600	264.300	5691.70	-838.93	-131.42	-844.16	40°13'52.738"N	104°55'24.788"W	2.86	
5881.00	6.000	269.700	5786.13	-849.30	-131.99	-854.56	40°13'52.733"N	104°55'24.922"W	0.89	
5976.00	4.900	270.500	5880.70	-858.32	-131.98	-863.58	40°13'52.733"N	104°55'25.039"W	1.16	
6165.00	0.500	168.700	6069.47	-866.20	-132.72	-871.49	40°13'52.726"N	104°55'25.141"W	2.66	
6386.00	0.200	141.200	6290.47	-865.73	-133.96	-871.06	40°13'52.713"N	104°55'25.135"W	0.15	
6450.00	1.100	89.200	6354.46	-865.04	-134.04	-870.38	40°13'52.712"N	104°55'25.126"W	1.55	
6545.00	8.500	83.400	6449.06	-857.18	-133.22	-862.48	40°13'52.721"N	104°55'25.025"W	7.80	
6639.00	17.600	84.100	6540.54	-836.19	-130.96	-841.40	40°13'52.743"N	104°55'24.753"W	9.68	
6734.00	26.700	85.800	6628.44	-800.68	-127.91	-805.75	40°13'52.773"N	104°55'24.293"W	9.60	
6828.00	37.300	90.200	6708.05	-751.07	-126.46	-756.06	40°13'52.787"N	104°55'23.652"W	11.54	
6924.00	48.900	91.000	6778.03	-685.61	-127.19	-690.58	40°13'52.780"N	104°55'22.808"W	12.10	
7016.00	55.300	91.300	6834.51	-613.06	-128.66	-618.04	40°13'52.766"N	104°55'21.873"W	6.96	
7111.00	62.400	89.800	6883.62	-531.84	-129.40	-536.80	40°13'52.758"N	104°55'20.825"W	7.59	
7205.00	73.900	88.500	6918.55	-444.85	-128.07	-449.71	40°13'52.772"N	104°55'19.703"W	12.30	
7301.00	83.200	87.400	6937.59	-351.11	-124.69	-355.79	40°13'52.805"N	104°55'18.492"W	9.75	
7314.00	83.200	87.500	6939.13	-338.24	-124.12	-342.89	40°13'52.811"N	104°55'18.325"W	0.76	
7365.00†	85.317	88.564	6944.23	-287.63	-122.37	-292.18	40°13'52.828"N	104°55'17.672"W	4.64	7" CASING POINT
7444.00	88.600	90.200	6948.42	-208.84	-121.52	-213.31	40°13'52.836"N	104°55'16.655"W	4.64	
7540.00	89.000	89.900	6950.43	-112.92	-121.61	-117.33	40°13'52.835"N	104°55'15.417"W	0.52	
7634.00	89.500	89.700	6951.66	-19.00	-121.28	-23.34	40°13'52.839"N	104°55'14.205"W	0.57	
7823.00	91.100	90.000	6950.67	169.86	-120.79	165.65	40°13'52.844"N	104°55'11.769"W	0.86	
7917.00	91.000	90.700	6948.95	263.80	-121.36	259.63	40°13'52.838"N	104°55'10.557"W	0.75	
8106.00	89.000	91.200	6948.95	452.75	-124.49	448.60	40°13'52.807"N	104°55'08.121"W	1.09	
8293.00	90.300	90.500	6950.09	639.70	-127.27	635.57	40°13'52.779"N	104°55'05.710"W	0.79	
8482.00	90.500	91.400	6948.77	828.66	-130.40	824.54	40°13'52.748"N	104°55'03.273"W	0.49	
8671.00	88.600	92.000	6950.26	1017.64	-136.01	1013.44	40°13'52.693"N	104°55'00.838"W	1.05	
8861.00	89.900	92.200	6952.74	1207.62	-142.97	1203.29	40°13'52.624"N	104°54'58.390"W	0.69	
9050.00	90.700	91.400	6951.75	1396.62	-148.90	1392.19	40°13'52.565"N	104°54'55.955"W	0.60	
9241.00	90.300	91.000	6950.09	1587.59	-152.90	1583.14	40°13'52.526"N	104°54'53.493"W	0.30	
9432.00	90.500	89.800	6948.75	1778.50	-154.24	1774.13	40°13'52.512"N	104°54'51.030"W	0.64	
9621.00	89.400	88.600	6948.92	1967.26	-151.60	1963.10	40°13'52.538"N	104°54'48.594"W	0.86	
9810.00	91.300	88.800	6947.76	2155.93	-147.31	2152.04	40°13'52.581"N	104°54'46.158"W	1.01	
9999.00	89.400	89.300	6946.61	2344.66	-144.18	2341.00	40°13'52.611"N	104°54'43.721"W	1.04	
10188.00	88.300	89.400	6950.40	2533.41	-142.03	2529.95	40°13'52.632"N	104°54'41.285"W	0.58	
10377.00	89.400	89.400	6954.20	2722.16	-140.06	2718.90	40°13'52.652"N	104°54'38.849"W	0.58	
10567.00	89.700	89.900	6955.69	2911.99	-138.90	2908.89	40°13'52.663"N	104°54'36.399"W	0.31	
10757.00	89.000	90.000	6957.84	3101.85	-138.73	3098.87	40°13'52.664"N	104°54'33.950"W	0.37	
10947.00	90.300	89.400	6959.00	3291.68	-137.73	3288.86	40°13'52.674"N	104°54'31.500"W	0.75	
11136.00	91.400	90.300	6956.20	3480.52	-137.24	3477.84	40°13'52.679"N	104°54'29.064"W	0.75	
11231.00	90.300	90.900	6954.79	3575.48	-138.23	3572.82	40°13'52.669"N	104°54'27.839"W	1.32	

Actual Wellpath Report

ELLIOTT STATE 1N-17HZ AWP

Page 4 of 5

REFERENCE WELLPATH IDENTIFICATION			
Operator	KERR-MCGEE OIL & GAS ONSHORE LP	Slot	SLOT#25 ELLIOTT STATE 1N-17HZ (537'FNL & 760'FWL, SEC.17)
Area	COLORADO	Well	ELLIOTT STATE 1N-17HZ
Field	WELD COUNTY (KERR MCGEE)	Wellbore	ELLIOTT STATE 1N-17HZ AWB
Facility	SEC.17-T3N-R67W		

WELLPATH DATA (97 stations)										
MD [ft]	Inclination [°]	Azimuth [°]	TVD [ft]	Vert Sect [ft]	North [ft]	East [ft]	Latitude	Longitude	DLS [°/100ft]	Comments
11420.00	90.800	91.600	6952.98	3764.45	-142.36	3761.76	40°13'52.628"N	104°54'25.403"W	0.46	
11515.00	90.300	92.500	6952.07	3859.44	-145.76	3856.70	40°13'52.594"N	104°54'24.179"W	1.08	
11608.00	90.200	92.400	6951.66	3952.44	-149.73	3949.61	40°13'52.554"N	104°54'22.981"W	0.15	
11702.00	88.900	91.200	6952.40	4046.43	-152.68	4043.56	40°13'52.525"N	104°54'21.770"W	1.88	
11892.00	88.900	90.400	6956.05	4236.35	-155.34	4233.50	40°13'52.499"N	104°54'19.321"W	0.42	
11960.00	89.400	90.200	6957.05	4304.31	-155.69	4301.49	40°13'52.495"N	104°54'18.444"W	0.79	LAST BHI MWD+IFR SURVEY
12025.00	89.400	90.200	6957.73	4369.27	-155.92	4366.49	40°13'52.493"N	104°54'17.606"W	0.00	PROJECTION TO BIT

HOLE & CASING SECTIONS - Ref Wellbore: ELLIOTT STATE 1N-17HZ AWB Ref Wellpath: ELLIOTT STATE 1N-17HZ AWP									
String/Diameter	Start MD [ft]	End MD [ft]	Interval [ft]	Start TVD [ft]	End TVD [ft]	Start N/S [ft]	Start E/W [ft]	End N/S [ft]	End E/W [ft]
13.5in Open Hole	13.00	1251.00	1238.00	13.00	1250.95	0.00	0.00	0.83	-1.42
9.625in Casing Surface	13.00	1251.00	1238.00	13.00	1250.95	0.00	0.00	0.83	-1.42
8.75in Open Hole	1251.00	7376.00	6125.00	1250.95	6945.08	0.83	-1.42	-122.12	-281.22
7in Casing Intermediate	13.00	7365.00	7352.00	13.00	6944.23	0.00	0.00	-122.37	-292.18
6.125in Open Hole	7365.00	12025.00	4660.00	6944.23	6957.73	-122.37	-292.18	-155.92	4366.49

TARGETS									
Name	MD [ft]	TVD [ft]	North [ft]	East [ft]	Grid East [US ft]	Grid North [US ft]	Latitude	Longitude	Shape
ELLIOTT STATE 1N-17HZ BHL ON PLAT (670'FNL & 50'FEL, SEC.17)		6951.00	-160.64	4367.50	3166156.49	1327638.43	40°13'52.446"N	104°54'17.593"W	point
ELLIOTT STATE 1N-17HZ LAND BOX		7000.00	0.00	0.00	3161788.23	1327770.51	40°13'54.037"N	104°55'13.904"W	polygon
ELLIOTT STATE SEC.17 SECTION LINES		7200.00	0.36	-29.88	3161758.35	1327770.68	40°13'54.041"N	104°55'14.290"W	polygon

WELLPATH COMPOSITION - Ref Wellbore: ELLIOTT STATE 1N-17HZ AWB Ref Wellpath: ELLIOTT STATE 1N-17HZ AWP				
Start MD [ft]	End MD [ft]	Positional Uncertainty Model	Log Name/Comment	Wellbore
13.00	1159.00	Generic gyro - continuous (Standard)	MS ENERGY GYRO SURVEYS <113-1159>	ELLIOTT STATE 1N-17HZ AWB
1159.00	7314.00	NaviTrak (IFR)	BHI MWD+IFR SURVEYS 8 3/4" HOLE <1305-7314>	ELLIOTT STATE 1N-17HZ AWB
7314.00	11960.00	NaviTrak (IFR)	BHI MWD+IFR SURVEYS 6 1/8" HOLE <7444-11960>	ELLIOTT STATE 1N-17HZ AWB
11960.00	12025.00	Blind Drilling (std)	Projection to bit	ELLIOTT STATE 1N-17HZ AWB



Actual Wellpath Report

ELLIOTT STATE 1N-17HZ AWP

Page 5 of 5



REFERENCE WELLPATH IDENTIFICATION			
Operator	KERR-MCGEE OIL & GAS ONSHORE LP	Slot	SLOT#25 ELLIOTT STATE 1N-17HZ (537'FNL & 760'FWL, SEC.17)
Area	COLORADO	Well	ELLIOTT STATE 1N-17HZ
Field	WELD COUNTY (KERR MCGEE)	Wellbore	ELLIOTT STATE 1N-17HZ AWB
Facility	SEC.17-T3N-R67W		

WELLPATH COMMENTS				
MD [ft]	Inclination [°]	Azimuth [°]	TVD [ft]	Comment
13.00	0.000	70.810	13.00	TIE-ON
113.00	0.760	70.810	113.00	BEGIN GYRO SURVEYS
1159.00	0.380	331.240	1158.95	TIE-INTO GYRO SURVEYS
1305.00	0.300	216.500	1304.95	BEGIN BHI MWD+IFR SURVEYS
7365.00	85.317	88.564	6944.23	7" CASING POINT
11960.00	89.400	90.200	6957.05	LAST BHI MWD+IFR SURVEY
12025.00	89.400	90.200	6957.73	PROJECTION TO BIT