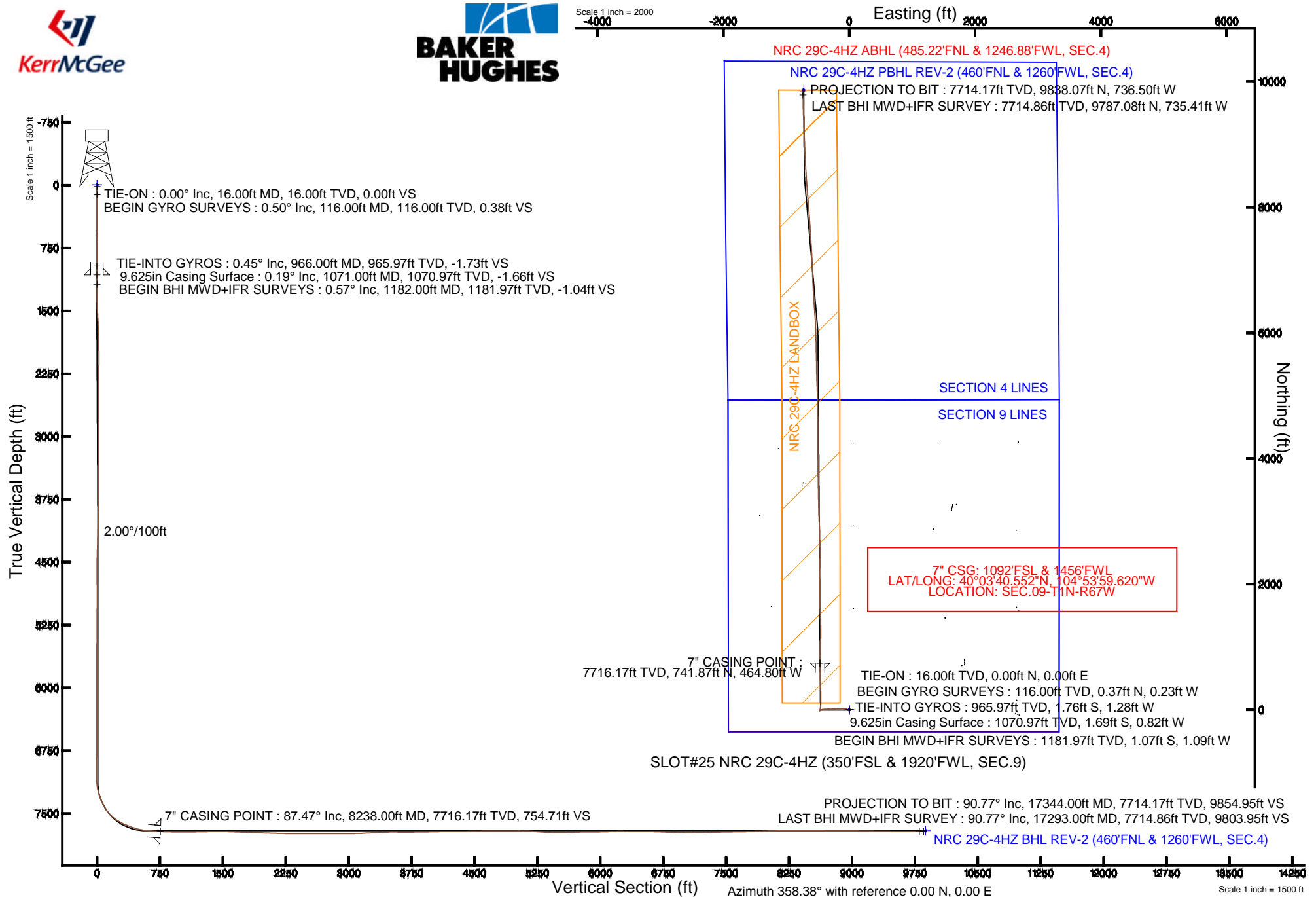


KERR-MCGEE OIL & GAS ONSHORE LP

Location: COLORADO Slot: SLOT#25 NRC 29C-4HZ (350'FSL & 1920'FWL, SEC.9)
 Field: WELD COUNTY (KERR MCGEE) Well: NRC 29C-4HZ
 Facility: SEC.09-T1N-R67W Wellbore: NRC 29C-4HZ PWB

Plot reference wellpath is NRC 29C-4HZ (REV-A.2) PWP

True vertical depths are referenced to XTREME 24 (16' RKB) (RKB)	Grid System: NAD83 / Lambert Colorado SP, Northern Zone (501), US feet
Measured depths are referenced to XTREME 24 (16' RKB) (RKB)	North Reference: True north
XTREME 24 (16' RKB) (RKB) to Mean Sea Level: 5067 feet	Scale: True distance
Mean Sea Level to Mud line (At Slot: SLOT#25 NRC 29C-4HZ (350'FSL & 1920'FWL, SEC.9)): 0 feet	Depths are in feet
Coordinates are in feet referenced to Slot.	Created by: wilsje02 on 4/28/2014





Actual Wellpath Report

NRC 29C-4HZ AWP

Page 1 of 6



REFERENCE WELLPATH IDENTIFICATION

Operator	KERR-MCGEE OIL & GAS ONSHORE LP	Slot	SLOT#25 NRC 29C-4HZ (350'FSL & 1920'FWL, SEC.9)
Area	COLORADO	Well	NRC 29C-4HZ
Field	WELD COUNTY (KERR MCGEE)	Wellbore	NRC 29C-4HZ AWB
Facility	SEC.09-T1N-R67W		

REPORT SETUP INFORMATION

Projection System	NAD83 / Lambert Colorado SP, Northern Zone (501), US feet	Software System	WellArchitect® 4.0.0
North Reference	True	User	Wilsjef02
Scale	0.999962	Report Generated	4/28/2014 at 3:37:29 PM
Convergence at slot	n/a	Database/Source file	WellArchitectDB/NRC_29C-4HZ_AWB.xml

WELLPATH LOCATION

	Local coordinates		Grid coordinates		Geographic coordinates	
	North[ft]	East[ft]	Easting[US ft]	Northing[US ft]	Latitude	Longitude
Slot Location	-3266.93	-1649.52	3168439.23	1264993.66	40°03'33.221"N	104°53'53.642"W
Facility Reference Pt			3170066.25	1268271.69	40°04'05.506"N	104°53'32.428"W
Field Reference Pt			3197771.84	1268891.29	40°04'09.600"N	104°47'36.000"W

WELLPATH DATUM

Calculation method	Minimum curvature	XTREME 24 (16' RKB) (RKB) to Facility Vertical Datum	5067.00ft
Horizontal Reference Pt	Slot	XTREME 24 (16' RKB) (RKB) to Mean Sea Level	5067.00ft
Vertical Reference Pt	XTREME 24 (16' RKB) (RKB)	XTREME 24 (16' RKB) (RKB) to Mud Line at Slot (SLOT#25 NRC 29C-4HZ (350'FSL & 1920'FWL, SEC.9))	5067.00ft
MD Reference Pt	XTREME 24 (16' RKB) (RKB)	Section Origin	N 0.00, E 0.00 ft
Field Vertical Reference	Mean Sea Level	Section Azimuth	355.72°

Actual Wellpath Report

NRC 29C-4HZ AWP

Page 2 of 6

REFERENCE WELLPATH IDENTIFICATION			
Operator	KERR-MCGEE OIL & GAS ONSHORE LP	Slot	SLOT#25 NRC 29C-4HZ (350'FSL & 1920'FWL, SEC.9)
Area	COLORADO	Well	NRC 29C-4HZ
Field	WELD COUNTY (KERR MCGEE)	Wellbore	NRC 29C-4HZ AWB
Facility	SEC.09-T1N-R67W		

WELLPATH DATA (124 stations) † = interpolated/extrapolated station										
MD [ft]	Inclination [°]	Azimuth [°]	TVD [ft]	Vert Sect [ft]	North [ft]	East [ft]	Latitude	Longitude	DLS [°/100ft]	Comments
0.00†	0.000	328.000	0.00	0.00	0.00	0.00	40°03'33.221"N	104°53'53.642"W	0.00	
16.00	0.000	328.000	16.00	0.00	0.00	0.00	40°03'33.221"N	104°53'53.642"W	0.00	TIE-ON
116.00	0.500	328.000	116.00	0.39	0.37	-0.23	40°03'33.225"N	104°53'53.645"W	0.50	BEGIN GYRO SURVEYS
216.00	0.620	149.950	216.00	0.29	0.27	-0.19	40°03'33.224"N	104°53'53.644"W	1.12	
316.00	0.750	252.500	315.99	-0.35	-0.39	-0.54	40°03'33.217"N	104°53'53.649"W	1.07	
416.00	0.510	64.250	415.99	-0.34	-0.40	-0.77	40°03'33.217"N	104°53'53.652"W	1.26	
516.00	0.740	197.220	515.99	-0.78	-0.82	-0.56	40°03'33.213"N	104°53'53.649"W	1.15	
616.00	0.510	312.860	615.98	-1.05	-1.13	-1.08	40°03'33.210"N	104°53'53.656"W	1.07	
716.00	0.740	144.460	715.98	-1.28	-1.36	-1.03	40°03'33.208"N	104°53'53.655"W	1.24	
816.00	0.840	255.190	815.98	-1.96	-2.07	-1.36	40°03'33.201"N	104°53'53.659"W	1.30	
916.00	0.610	48.080	915.97	-1.77	-1.90	-1.67	40°03'33.202"N	104°53'53.664"W	1.41	
966.00	0.450	101.710	965.97	-1.66	-1.76	-1.28	40°03'33.204"N	104°53'53.658"W	1.00	TIE-INTO GYROS
1182.00	0.570	323.760	1181.97	-0.99	-1.07	-1.09	40°03'33.210"N	104°53'53.656"W	0.44	BEGIN BHI MWD+IFR SURVEYS
1276.00	2.510	277.310	1275.93	-0.17	-0.43	-3.41	40°03'33.217"N	104°53'53.686"W	2.29	
1370.00	4.910	278.540	1369.73	1.13	0.43	-9.43	40°03'33.225"N	104°53'53.763"W	2.55	
1464.00	6.440	288.900	1463.27	4.10	2.73	-18.39	40°03'33.248"N	104°53'53.879"W	1.95	
1558.00	8.370	289.690	1556.48	8.95	6.75	-29.82	40°03'33.288"N	104°53'54.026"W	2.06	
1652.00	10.250	285.510	1649.24	14.57	11.29	-44.32	40°03'33.333"N	104°53'54.212"W	2.12	
1746.00	12.000	276.370	1741.47	19.21	14.61	-62.10	40°03'33.365"N	104°53'54.441"W	2.64	
1842.00	11.520	275.340	1835.46	22.65	16.61	-81.56	40°03'33.385"N	104°53'54.691"W	0.55	
1933.00	10.590	273.060	1924.77	25.24	17.90	-98.96	40°03'33.398"N	104°53'54.915"W	1.13	
2025.00	10.000	272.050	2015.29	27.20	18.64	-115.38	40°03'33.405"N	104°53'55.126"W	0.67	
2117.00	10.810	264.740	2105.78	27.93	18.13	-131.96	40°03'33.400"N	104°53'55.339"W	1.68	
2209.00	10.530	266.640	2196.19	27.92	16.85	-148.94	40°03'33.388"N	104°53'55.557"W	0.49	
2301.00	10.700	268.510	2286.61	28.47	16.14	-165.87	40°03'33.380"N	104°53'55.775"W	0.42	
2393.00	9.850	266.560	2377.14	29.00	15.44	-182.26	40°03'33.374"N	104°53'55.986"W	1.00	
2485.00	10.060	266.870	2467.75	29.28	14.53	-198.14	40°03'33.365"N	104°53'56.190"W	0.24	
2669.00	8.850	267.070	2649.25	29.94	12.93	-228.32	40°03'33.349"N	104°53'56.578"W	0.66	
2853.00	7.810	269.190	2831.31	31.03	12.03	-254.96	40°03'33.340"N	104°53'56.921"W	0.59	
3037.00	9.200	267.140	3013.28	32.15	11.12	-282.15	40°03'33.331"N	104°53'57.271"W	0.77	
3221.00	8.780	273.720	3195.02	34.47	11.30	-310.86	40°03'33.333"N	104°53'57.640"W	0.60	
3405.00	9.680	267.480	3376.64	36.90	11.53	-340.33	40°03'33.335"N	104°53'58.019"W	0.73	
3588.00	10.300	267.000	3556.87	37.74	9.99	-372.04	40°03'33.320"N	104°53'58.427"W	0.34	
3775.00	8.120	264.090	3741.45	37.74	7.76	-401.87	40°03'33.298"N	104°53'58.810"W	1.19	
3869.00	7.720	258.850	3834.55	36.79	5.85	-414.67	40°03'33.279"N	104°53'58.975"W	0.88	
3962.00	7.040	256.400	3926.78	35.12	3.31	-426.34	40°03'33.254"N	104°53'59.125"W	0.81	
4056.00	5.950	256.520	4020.18	33.41	0.82	-436.68	40°03'33.229"N	104°53'59.258"W	1.16	
4150.00	5.460	255.090	4113.71	31.81	-1.47	-445.73	40°03'33.206"N	104°53'59.374"W	0.54	
4244.00	5.540	252.510	4207.28	29.95	-3.99	-454.38	40°03'33.182"N	104°53'59.486"W	0.28	
4337.00	4.070	233.160	4299.95	27.15	-7.31	-461.31	40°03'33.149"N	104°53'59.575"W	2.33	
4431.00	1.690	206.440	4393.83	24.16	-10.56	-464.60	40°03'33.117"N	104°53'59.617"W	2.84	
4525.00	0.430	242.860	4487.82	22.83	-11.96	-465.53	40°03'33.103"N	104°53'59.629"W	1.46	
4780.00	0.240	357.080	4742.81	22.99	-11.86	-466.41	40°03'33.104"N	104°53'59.640"W	0.22	
5121.00	0.460	235.390	5083.81	23.01	-11.92	-467.57	40°03'33.103"N	104°53'59.655"W	0.18	
5462.00	0.590	219.390	5424.80	21.05	-14.06	-469.81	40°03'33.082"N	104°53'59.684"W	0.06	

Actual Wellpath Report

NRC 29C-4HZ AWP

Page 3 of 6

REFERENCE WELLPATH IDENTIFICATION

Operator	KERR-MCGEE OIL & GAS ONSHORE LP	Slot	SLOT#25 NRC 29C-4HZ (350'FSL & 1920'FWL, SEC.9)
Area	COLORADO	Well	NRC 29C-4HZ
Field	WELD COUNTY (KERR MCGEE)	Wellbore	NRC 29C-4HZ AWB
Facility	SEC.09-T1N-R67W		

WELLPATH DATA (124 stations) † = interpolated/extrapolated station

MD [ft]	Inclination [°]	Azimuth [°]	TVD [ft]	Vert Sect [ft]	North [ft]	East [ft]	Latitude	Longitude	DLS [°/100ft]	Comments
5803.00	0.370	274.430	5765.78	19.95	-15.33	-472.02	40°03'33.069"N	104°53'59.713"W	0.14	
6144.00	0.180	223.840	6106.78	19.76	-15.63	-473.49	40°03'33.066"N	104°53'59.731"W	0.09	
6485.00	0.270	71.520	6447.78	19.60	-15.76	-473.10	40°03'33.065"N	104°53'59.726"W	0.13	
6825.00	0.780	118.150	6787.77	18.55	-16.60	-470.30	40°03'33.057"N	104°53'59.690"W	0.18	
7081.00	0.910	120.590	7043.74	16.46	-18.46	-467.01	40°03'33.039"N	104°53'59.648"W	0.05	
7166.00	3.110	16.870	7128.70	18.22	-16.59	-465.76	40°03'33.057"N	104°53'59.632"W	4.05	
7251.00	12.910	7.200	7212.77	29.71	-4.94	-463.90	40°03'33.172"N	104°53'59.608"W	11.60	
7337.00	19.910	9.160	7295.21	53.39	19.08	-460.36	40°03'33.410"N	104°53'59.563"W	8.16	
7422.00	24.280	6.770	7373.95	84.64	50.74	-455.99	40°03'33.722"N	104°53'59.506"W	5.25	
7507.00	32.830	0.780	7448.56	124.82	91.21	-453.61	40°03'34.122"N	104°53'59.476"W	10.60	
7592.00	44.470	0.370	7514.83	177.63	144.21	-453.11	40°03'34.646"N	104°53'59.469"W	13.70	
7677.00	55.170	359.660	7569.59	242.30	209.05	-453.12	40°03'35.287"N	104°53'59.470"W	12.60	
7763.00	62.910	359.030	7613.80	315.84	282.74	-453.98	40°03'36.015"N	104°53'59.481"W	9.02	
7848.00	68.850	357.730	7648.52	393.30	360.25	-456.19	40°03'36.781"N	104°53'59.509"W	7.13	
7933.00	72.830	357.250	7676.41	473.54	440.45	-459.71	40°03'37.574"N	104°53'59.554"W	4.71	
8018.00	79.410	357.850	7696.79	555.97	522.85	-463.23	40°03'38.388"N	104°53'59.600"W	7.77	
8060.00	84.480	0.040	7702.67	597.47	564.41	-463.99	40°03'38.799"N	104°53'59.609"W	13.13	
8103.00	85.130	359.940	7706.57	640.18	607.23	-464.00	40°03'39.222"N	104°53'59.610"W	1.53	
8145.00	85.210	359.010	7710.10	681.94	649.08	-464.38	40°03'39.635"N	104°53'59.614"W	2.21	
8188.00	86.090	359.350	7713.37	724.73	691.95	-465.00	40°03'40.059"N	104°53'59.622"W	2.19	
8194.00	86.270	0.000	7713.77	730.71	697.94	-465.03	40°03'40.118"N	104°53'59.623"W	11.22	
8238.00†	87.469	0.594	7716.17	774.50	741.87	-464.80	40°03'40.552"N	104°53'59.620"W	3.04	7" CASING POINT
8274.00	88.450	1.080	7717.45	810.33	777.84	-464.28	40°03'40.908"N	104°53'59.613"W	3.04	
8359.00	88.750	1.100	7719.53	894.93	862.80	-462.66	40°03'41.747"N	104°53'59.592"W	0.35	
8614.00	90.870	2.480	7720.37	1148.48	1117.66	-454.69	40°03'44.266"N	104°53'59.490"W	0.99	
8785.00	91.050	358.780	7717.51	1318.80	1288.59	-452.81	40°03'45.955"N	104°53'59.466"W	2.17	
8955.00	89.870	357.630	7716.14	1488.63	1458.50	-458.14	40°03'47.634"N	104°53'59.534"W	0.97	
9126.00	87.800	357.870	7719.62	1659.48	1629.32	-464.85	40°03'49.322"N	104°53'59.621"W	1.22	
9381.00	87.960	359.660	7729.05	1913.93	1884.08	-470.34	40°03'51.840"N	104°53'59.691"W	0.70	
9729.00	88.510	1.170	7739.77	2260.59	2231.89	-467.82	40°03'55.277"N	104°53'59.659"W	0.46	
9915.00	90.760	1.050	7740.96	2445.75	2417.84	-464.22	40°03'57.115"N	104°53'59.613"W	1.21	
10102.00	89.070	358.580	7741.23	2632.25	2604.82	-464.82	40°03'58.962"N	104°53'59.621"W	1.60	
10195.00	90.150	358.530	7741.87	2725.13	2697.78	-467.17	40°03'59.881"N	104°53'59.651"W	1.16	
10287.00	91.660	359.330	7740.41	2816.97	2789.75	-468.89	40°04'00.790"N	104°53'59.673"W	1.86	
10380.00	88.700	356.670	7740.12	2909.88	2882.68	-472.13	40°04'01.708"N	104°53'59.715"W	4.28	
10474.00	90.060	357.560	7741.14	3003.84	2976.55	-476.86	40°04'02.636"N	104°53'59.776"W	1.73	
10567.00	91.870	358.230	7739.57	3096.76	3069.47	-480.28	40°04'03.554"N	104°53'59.820"W	2.08	
10752.00	92.880	358.590	7731.91	3281.39	3254.24	-485.41	40°04'05.380"N	104°53'59.886"W	0.58	
10936.00	92.500	358.930	7723.27	3464.93	3437.99	-489.38	40°04'07.196"N	104°53'59.937"W	0.28	
11028.00	89.350	358.960	7721.79	3556.76	3529.95	-491.08	40°04'08.105"N	104°53'59.959"W	3.42	
11303.00	90.670	359.140	7721.74	3831.29	3804.91	-495.64	40°04'10.822"N	104°54'00.017"W	0.48	
11579.00	91.380	359.860	7716.80	4106.64	4080.85	-498.05	40°04'13.549"N	104°54'00.048"W	0.37	
11763.00	89.750	359.740	7714.99	4290.16	4264.83	-498.69	40°04'15.367"N	104°54'00.057"W	0.89	
12039.00	91.210	359.840	7712.67	4565.45	4540.81	-499.70	40°04'18.094"N	104°54'00.070"W	0.53	
12130.00	89.930	359.120	7711.77	4656.24	4631.80	-500.53	40°04'18.993"N	104°54'00.080"W	1.61	

Actual Wellpath Report

NRC 29C-4HZ AWP

Page 4 of 6

REFERENCE WELLPATH IDENTIFICATION			
Operator	KERR-MCGEE OIL & GAS ONSHORE LP	Slot	SLOT#25 NRC 29C-4HZ (350'FSL & 1920'FWL, SEC.9)
Area	COLORADO	Well	NRC 29C-4HZ
Field	WELD COUNTY (KERR MCGEE)	Wellbore	NRC 29C-4HZ AWB
Facility	SEC.09-T1N-R67W		

WELLPATH DATA (124 stations)										
MD [ft]	Inclination [°]	Azimuth [°]	TVD [ft]	Vert Sect [ft]	North [ft]	East [ft]	Latitude	Longitude	DLS [°/100ft]	Comments
12406.00	90.700	359.530	7710.25	4931.69	4907.78	-503.78	40°04'21.721"N	104°54'00.122"W	0.32	
12572.00	89.650	357.430	7709.74	5097.49	5073.71	-508.18	40°04'23.360"N	104°54'00.179"W	1.41	
12657.00	86.660	357.950	7712.48	5182.38	5158.58	-511.60	40°04'24.199"N	104°54'00.223"W	3.57	
12828.00	86.190	358.470	7723.14	5352.89	5329.17	-516.94	40°04'25.885"N	104°54'00.292"W	0.41	
12913.00	88.060	358.920	7727.41	5437.66	5414.03	-518.87	40°04'26.724"N	104°54'00.316"W	2.26	
12998.00	90.180	359.220	7728.71	5522.50	5499.01	-520.25	40°04'27.563"N	104°54'00.334"W	2.52	
13083.00	91.870	358.640	7727.19	5607.35	5583.97	-521.83	40°04'28.403"N	104°54'00.355"W	2.10	
13168.00	92.090	358.470	7724.25	5692.19	5668.90	-523.98	40°04'29.242"N	104°54'00.382"W	0.33	
13254.00	91.010	359.600	7721.93	5778.02	5754.85	-525.42	40°04'30.092"N	104°54'00.401"W	1.82	
13424.00	90.210	357.740	7720.12	5947.77	5924.79	-529.37	40°04'31.771"N	104°54'00.452"W	1.19	
13594.00	92.120	358.410	7716.66	6117.58	6094.65	-535.08	40°04'33.450"N	104°54'00.525"W	1.19	
13765.00	89.290	355.770	7714.56	6288.49	6265.38	-543.76	40°04'35.137"N	104°54'00.637"W	2.26	
13936.00	90.330	355.510	7715.12	6459.49	6435.88	-556.76	40°04'36.822"N	104°54'00.804"W	0.63	
14113.00	88.480	357.200	7716.96	6636.45	6612.50	-568.01	40°04'38.567"N	104°54'00.949"W	1.42	
14369.00	87.500	357.320	7725.94	6892.20	6868.05	-580.24	40°04'41.092"N	104°54'01.106"W	0.39	
14454.00	88.340	357.920	7729.03	6977.10	6952.92	-583.77	40°04'41.931"N	104°54'01.152"W	1.21	
14539.00	90.400	357.800	7729.96	7062.03	7037.85	-586.94	40°04'42.770"N	104°54'01.193"W	2.43	
14709.00	91.480	357.260	7727.17	7231.92	7207.66	-594.27	40°04'44.449"N	104°54'01.287"W	0.71	
14880.00	91.360	356.270	7722.93	7402.83	7378.34	-603.91	40°04'46.135"N	104°54'01.411"W	0.58	
15050.00	90.710	356.460	7719.86	7572.79	7547.97	-614.69	40°04'47.812"N	104°54'01.550"W	0.40	
15221.00	91.050	356.210	7717.24	7743.76	7718.60	-625.62	40°04'49.498"N	104°54'01.690"W	0.25	
15391.00	91.880	355.390	7712.89	7913.70	7888.08	-638.06	40°04'51.173"N	104°54'01.851"W	0.69	
15561.00	91.670	355.840	7707.63	8083.62	8057.50	-651.06	40°04'52.847"N	104°54'02.018"W	0.29	
15732.00	89.940	355.510	7705.22	8254.60	8227.99	-663.95	40°04'54.532"N	104°54'02.184"W	1.03	
15902.00	89.810	355.770	7705.59	8424.60	8397.50	-676.87	40°04'56.207"N	104°54'02.350"W	0.17	
16072.00	89.570	356.540	7706.51	8594.59	8567.11	-688.27	40°04'57.883"N	104°54'02.497"W	0.47	
16242.00	89.850	357.460	7707.37	8764.54	8736.87	-697.17	40°04'59.561"N	104°54'02.611"W	0.57	
16412.00	89.660	357.350	7708.10	8934.47	8906.70	-704.87	40°05'01.239"N	104°54'02.710"W	0.13	
16582.00	89.160	357.340	7709.85	9104.39	9076.51	-712.74	40°05'02.917"N	104°54'02.812"W	0.29	
16752.00	89.350	358.170	7712.06	9274.26	9246.36	-719.40	40°05'04.595"N	104°54'02.897"W	0.50	
16922.00	89.200	357.580	7714.21	9444.13	9416.23	-725.70	40°05'06.274"N	104°54'02.979"W	0.36	
17092.00	89.750	358.770	7715.77	9613.96	9586.13	-731.12	40°05'07.953"N	104°54'03.048"W	0.77	
17293.00	90.770	358.780	7714.86	9814.67	9787.08	-735.41	40°05'09.939"N	104°54'03.104"W	0.51	LAST BHI MWD+IFR SURVEY
17344.00	90.770	358.780	7714.17	9865.59	9838.07	-736.50	40°05'10.443"N	104°54'03.118"W	0.00	PROJECTION TO BIT



Actual Wellpath Report

NRC 29C-4HZ AWP

Page 5 of 6



REFERENCE WELLPATH IDENTIFICATION			
Operator	KERR-MCGEE OIL & GAS ONSHORE LP	Slot	SLOT#25 NRC 29C-4HZ (350'FSL & 1920'FWL, SEC.9)
Area	COLORADO	Well	NRC 29C-4HZ
Field	WELD COUNTY (KERR MCGEE)	Wellbore	NRC 29C-4HZ AWB
Facility	SEC.09-T1N-R67W		

HOLE & CASING SECTIONS - Ref Wellbore: NRC 29C-4HZ AWB Ref Wellpath: NRC 29C-4HZ AWP									
String/Diameter	Start MD [ft]	End MD [ft]	Interval [ft]	Start TVD [ft]	End TVD [ft]	Start N/S [ft]	Start E/W [ft]	End N/S [ft]	End E/W [ft]
13.5in Open Hole	16.00	1071.00	1055.00	16.00	1070.97	0.00	0.00	-1.69	-0.82
9.625in Casing Surface	16.00	1071.00	1055.00	16.00	1070.97	0.00	0.00	-1.69	-0.82
8.75in Open Hole	1071.00	8250.00	7179.00	1070.97	7716.66	-1.69	-0.82	753.86	-464.66
7in Casing Intermediate	16.00	8238.00	8222.00	16.00	7716.17	0.00	0.00	741.87	-464.80
6.125in Open Hole	8238.00	17344.00	9106.00	7716.17	7714.17	741.87	-464.80	9838.07	-736.50

TARGETS									
Name	MD [ft]	TVD [ft]	North [ft]	East [ft]	Grid East [US ft]	Grid North [US ft]	Latitude	Longitude	Shape
NRC SECTION 4 LINES		-4.00	0.00	0.00	3168439.23	1264993.66	40°03'33.221"N	104°53'53.642"W	polygon
NRC SECTION 9 LINES		-4.00	0.00	0.00	3168439.23	1264993.66	40°03'33.221"N	104°53'53.642"W	polygon
NRC 29C-4HZ BHL ON PLAT REV-1 (460'FNL & 1410'FWL, SEC.4)		7707.00	9863.19	-573.38	3167798.96	1274852.34	40°05'10.691"N	104°54'01.019"W	point
NRC 29C-4HZ BHL REV-2 (460'FNL & 1260'FWL, SEC.4)		7707.00	9863.19	-723.38	3167648.96	1274851.33	40°05'10.691"N	104°54'02.949"W	point
NRC 29C-4HZ LANDBOX		7707.00	0.00	0.00	3168439.23	1264993.66	40°03'33.221"N	104°53'53.642"W	polygon

WELLPATH COMPOSITION - Ref Wellbore: NRC 29C-4HZ AWB Ref Wellpath: NRC 29C-4HZ AWP				
Start MD [ft]	End MD [ft]	Positional Uncertainty Model	Log Name/Comment	Wellbore
16.00	966.00	Generic gyro - continuous (Standard)	MS ENERGY GYRODATA SURVEYS <116-966>	NRC 29C-4HZ AWB
966.00	8274.00	NaviTrak (MAGCORR,IFR)	BHI MWD+IFR SURVEYS 8 3/4" HOLE <1182-8274>	NRC 29C-4HZ AWB
8274.00	17293.00	NaviTrak (MAGCORR,IFR)	BHI MWD+IFR SURVEYS 6 1/8" HOLE <8359-17293>	NRC 29C-4HZ AWB
17293.00	17344.00	Blind Drilling (std)	Projection to bit	NRC 29C-4HZ AWB



Actual Wellpath Report

NRC 29C-4HZ AWP

Page 6 of 6



REFERENCE WELLPATH IDENTIFICATION

Operator	KERR-MCGEE OIL & GAS ONSHORE LP	Slot	SLOT#25 NRC 29C-4HZ (350'FSL & 1920'FWL, SEC.9)
Area	COLORADO	Well	NRC 29C-4HZ
Field	WELD COUNTY (KERR MCGEE)	Wellbore	NRC 29C-4HZ AWB
Facility	SEC.09-T1N-R67W		

WELLPATH COMMENTS

MD [ft]	Inclination [°]	Azimuth [°]	TVD [ft]	Comment
16.00	0.000	328.000	16.00	TIE-ON
116.00	0.500	328.000	116.00	BEGIN GYRO SURVEYS
966.00	0.450	101.710	965.97	TIE-INTO GYROS
1182.00	0.570	323.760	1181.97	BEGIN BHI MWD+IFR SURVEYS
8238.00	87.469	0.594	7716.17	7" CASING POINT
17293.00	90.770	358.780	7714.86	LAST BHI MWD+IFR SURVEY
17344.00	90.770	358.780	7714.17	PROJECTION TO BIT