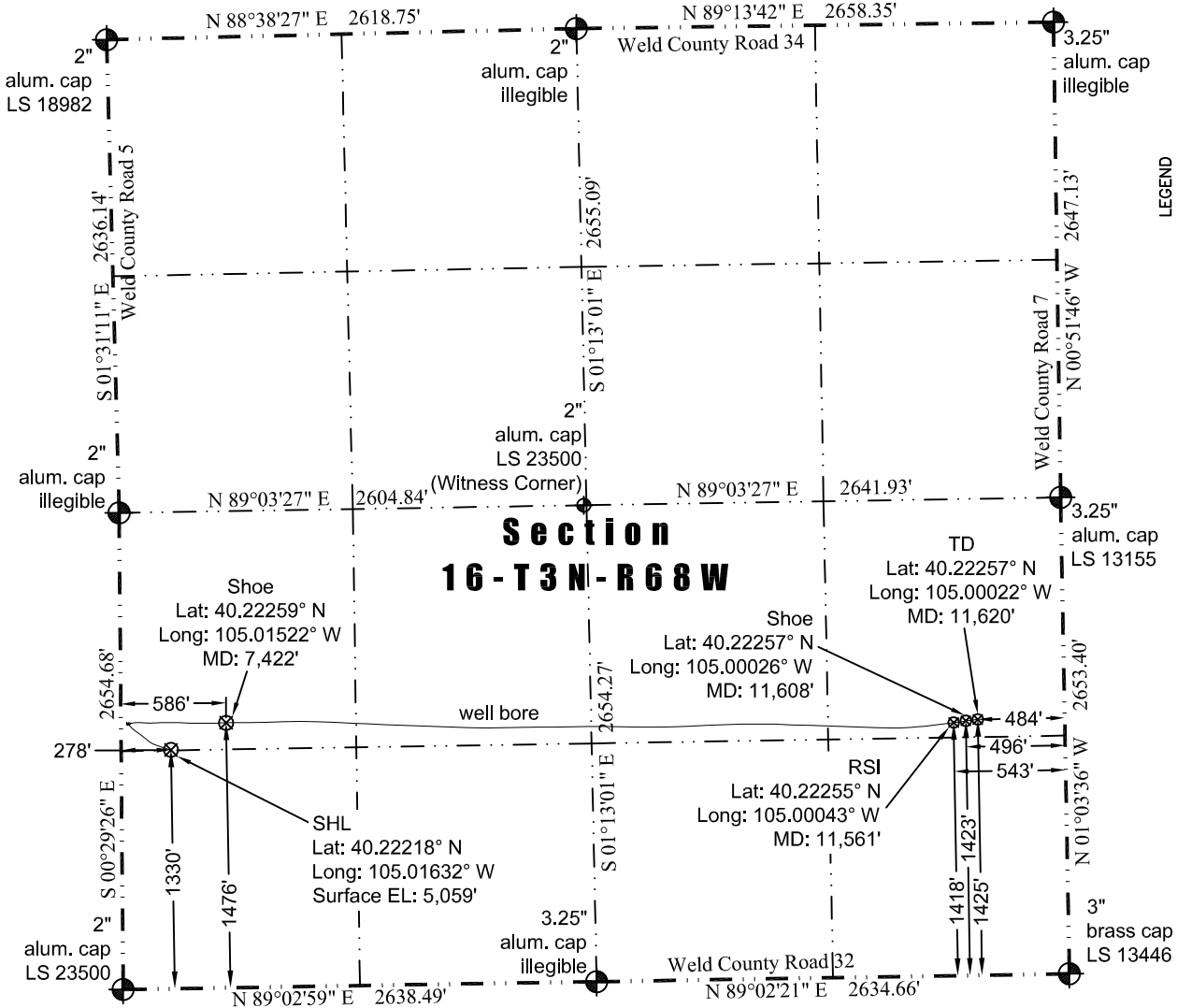
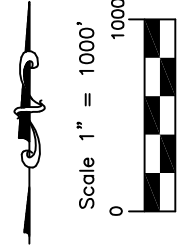


JR Land Surveying, LLC

8114 Northstar Drive  
Windsor, Colorado 80528  
P. 970-576-4641

# WELL BORE PLAT

State 3D-16H



## Section 16-T3N-R68W

LEGEND  
— found survey monument  
(c) — calculated dimension  
(MD) — measured depth

Notes:

- 1) Bearings and distances based on NAD 83 Colorado North State Plane Coordinates.
- 2) Conversion factor to ground (1.0002851530).
- 3) Elevations based on NAVD 88 GPS heights and Geoid 2003 corrections.
- 4) Well Bore Data supplied by operator.
- 5) This document is for review purposes only.
- 6) Drawing prepared 12/11/2013.

I hereby certify that this Well Bore Plat was prepared by me or under my direct supervision on 12/11/2013 for and on behalf of EnCana Oil & Gas (USA) Inc. That it is not a Land Survey Plat or an Improvement Survey Plat and that it is not to be relied upon for establishment of fences, buildings, or other future improvement lines.



John Robert McGehee LS#38219  
Well: State 3D-16H