



Baker Atlas

RESERVOIR PERFORMANCE MONITOR

File No: CH084704	Company Well	WPX ENERGY SAVAGE RWf 421-25
API No: 05045219660000	Field County	RULISON GARFIELD State CO
25 6S 94W RWf 22-25 PAD CYCLONE 17	Location SHL: 2449' FNL & 1439' FWL BHL: 1094' FNL & 2120' FWL SEC 25 TWP 6S RGE 94W	Other Services BOND LOG
Permanent Datum Log Measured From Drill Measured From	GL KB KB Elevation 21 ft Above P. D.	Elevations KB 6058 ft DF GL 6057 ft

Date	18/APR/14	
Run	ONE	
Service Order	US625367	
Depth Driller	BB15 ft	
Depth Logger	6768 ft	
Bottom Logged Interval	6758 ft	
Top Logged Interval	4643 ft	
Time Started	11:00	
Time Finished	17:00	
Operator Rig Time	6 HOURS	
Type of Fluid in Hole	WATER	
Fluid Density	NA	
Salinity	NA	
Fluid Level	89 ft	
Logged Cement Top	NA	
Wellhead Pressure	0 psi	
Maximum Hole Deviation	NA	
Nominal Logging Speed	10 fpm	
Maximum Recorded Temperature	232 degF	
Reference Log	BAKER HUGHES BOND LOG	
Reference Log Date	18/APR/14	
Equipment No.	4271	GRAND JCT.
Recorded By	NEWELL	
Witnessed By	COLE APPLIGATE	

- FOLD HERE

In making interpretations of logs, our employees will give the customer the benefit of their best judgement. But since all interpretations are opinions based on inferences from electrical or other measurements, we cannot, and we do not guarantee the accuracy or correctness of any interpretation. We shall not be liable or responsible for any loss, cost, damages, or expenses whatsoever incurred or sustained by the customer resulting from any interpretation made by any of our employees.

Borehole Record		
Bit Size	From	To
13.5 In	0 ft	1125 ft
8.75 In	1125 ft	8861 ft

Casing Record				
Size	Weight	Grade	From	To
9.625 In			0 ft	1125 ft
4.5 In	11.6 lbm/ft	1-80	0 ft	8861 ft

Remarks

All data on this log is shifted and depth matched using the Gamma Ray curve to the Baker Hughes bond log dated 4/18/2014 at the client's request.

The depth matching process creates potential for collar lengths to vary from those recorded on other cased hole wireline units without a Gamma Ray reference.

The amount of linear shift is 0 feet.

Equipment Data					
Run	Trip	Tool	Series Number	Serial Number	Position
1	1	PCM	8250EA	10397894	FREE
1	1	TEL/CCL	8248ED	10296408	FREE
1	1	GR	2812LA	10274385	FREE
1	1	RPM	8281EA	10423671	FREE
1	1	RPM	8283PA	10585555	FREE
1	1	RPM	8281FA	10401926	FREE

MAIN SECTION
PNC 3-D MODE

SPL PROCESSING					
MEASUREMENT TYPE	PARAMETER	VALUE	UNITS	TOP	BOTTOM
PNC Porosity	Borehole	Cased		4619.999	4732.000
PNC Porosity	Borehole Size	8.750	inch	4619.999	4732.000
PNC Porosity	Casing Size	4.500	inch	4619.999	4732.000
PNC Porosity	Gas Filled	Non Gas Filled		4619.999	4732.000
PNC Porosity	Matrix	Sandstone		4619.999	4732.000
PNC Porosity	Borehole	Cased		4732.000	7200.000
PNC Porosity	Borehole Size	8.750	inch	4732.000	7200.000
PNC Porosity	Casing Size	4.500	inch	4732.000	7200.000
PNC Porosity	Gas Filled	Non Gas Filled		4732.000	7200.000
PNC Porosity	Matrix	Sandstone		4732.000	7200.000
PNC Porosity	Borehole	Cased		7200.000	8757.750
PNC Porosity	Borehole Size	8.750	inch	7200.000	8757.750
PNC Porosity	Casing Size	4.500	inch	7200.000	8757.750
PNC Porosity	Gas Filled	Non Gas Filled		7200.000	8757.750
PNC Porosity	Matrix	Sandstone		7200.000	8757.750

DEPTH OFFSETS

(for Acquired Curves)

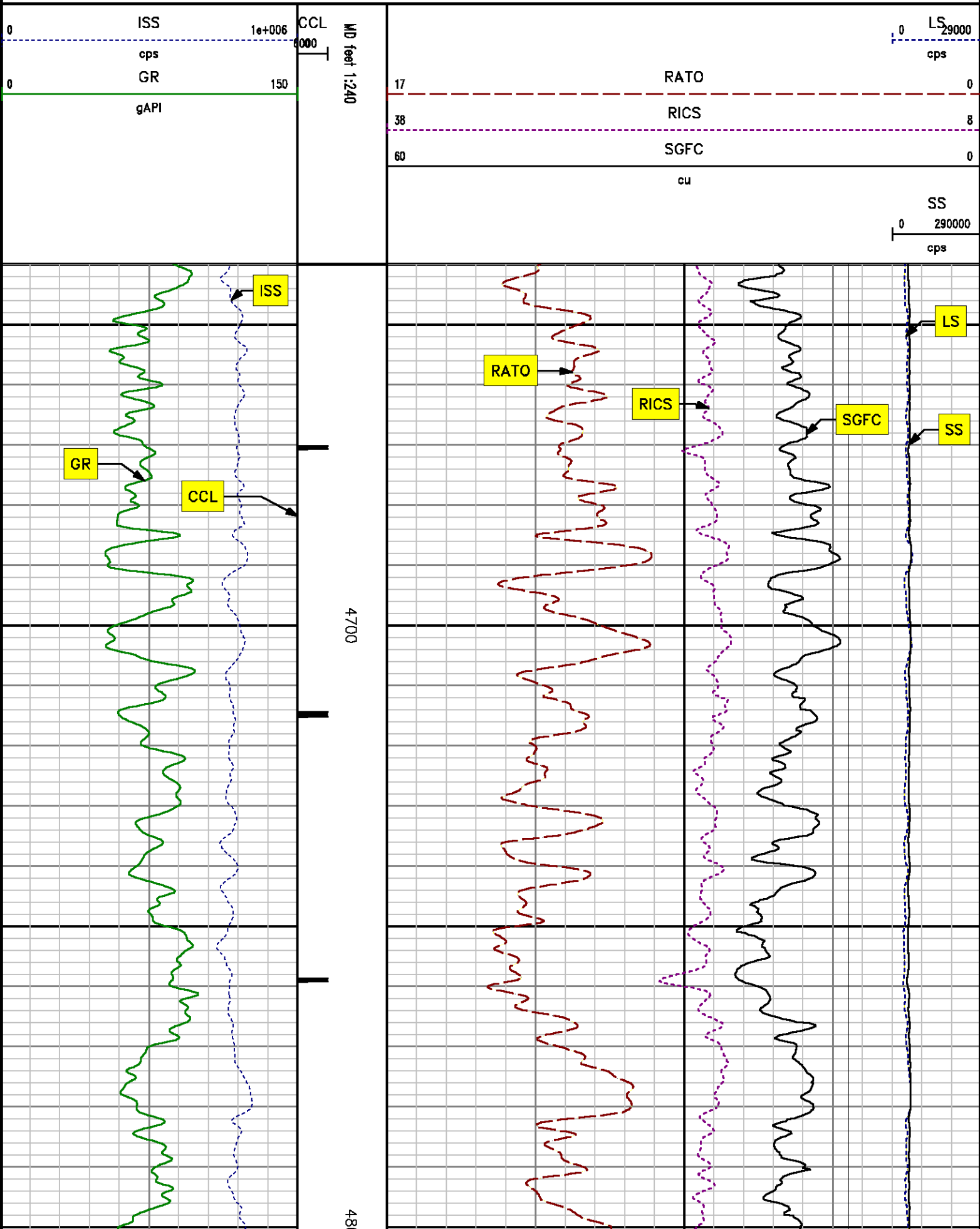
SERIES	DEPTH OFFSET	ACQUIRED CURVES					
8248ED	-14.478	FLTM					
8248ED	-12.478	CCL	CHV				
2812LA	-9.928	GR					
8281XA	-0.662	HVC3Q0	SEQ3	AMA3	AML3	BKX	CXS
		CPT3Q0	CPT3Q2	CPT3Q3	CPT3Q4	ET3	IXS
		MCS3	MCS3Q0	QCAL3	RGN3	RICX	SDA3
		SDL3	SGA3	SGL3	STA3	XS	ASPEC3
		AMB3	AMF3	CHF3	IXSC	IXSN	RAT023
		RICXC	RIN13C	RIN23	RIN23C	SD3D	SG3D
		SGB3	SGF3	WDTH3	CXSR	IXSR	XSR
		RICXR					
8281XA	-0.250	HVC2Q0	SEQ2	AMA2	AMB2	AMF2	AML2
		BKL	CHF2	CLS	CPT2Q0	CPT2Q2	CPT2Q3
		CPT2Q4	ET2	ILS	LS	MCS2	MCS2Q0
		QCAL2	RGN2	RICL	RONE23	RTW023	SDA2
		SDL2	SGA2	SGB2	SGF2	SGK2	SGL2
		STA2	ASPEC2	ILSC	ILSN	WDTH2	RICLC
		CLSR	ILSR	LSR	RICLR		
8281XA	0.000	CPRS	HVC1Q0	MV	SEQ	SEQ1	AMA1
		AMB1	AME1	AMF1	AML1	BKS	CHF1
		CSS	CORB	CORF	CPT1Q0	CPT1Q2	CPT1Q2A
		CPT1Q2B	CPT1Q2C	CPT1Q3	CPT1Q4	CPT1Q5	ET1
		G1	G2	GE1S	GE2S	ISS	MCS1
		MCS1Q0	QA1	QCAL1	QM1	RAT0	RAT013
		RBOR	RGN1	RICS	RIN	RONE	RPOR
		RTW0	RIN13	RONE13	RTW013	SALB	SC1
		SDA1	SDL1	SGA1	SGB1	SGBC	SGE1
		SGF1	SGFC	SGK1	SGL1	SS	SS2
		STA1	PD1S	PD2S	PD3S	MD1S	MD2S
		MD3S	DG1S	DG2S	DG3S	PD1M	PD2M
		PD3M	MD1M	MD2M	MD3M	DG1M	DG2M
		DG3M	MVS	MA	MVM	FILV	IAM
		TA	PVM	PVS	IAS	SSTAT	QPD1
		QPD2	QPD3	QMD1	QMD2	QMD3	QDG1
		QDG2	QDG3	QMA	QTA	QFILV	QMV
		QPV	QIA	DERR	DCNT	QPK1	QSA1
		PKS1	ASPEC1	HOC	FE2XC	ISSC	RINC
		ISSN	RDEN	WDTH1	RICSC	CSSR	G1R
		G2R	ISSR	SSR	SS2R	RATOR	RAT013R
		RBORR	RICSR	RINR	RIN13R	RONER	RPORR
		RTWOR					
SYSTEM	0.000	TEN	TEN				

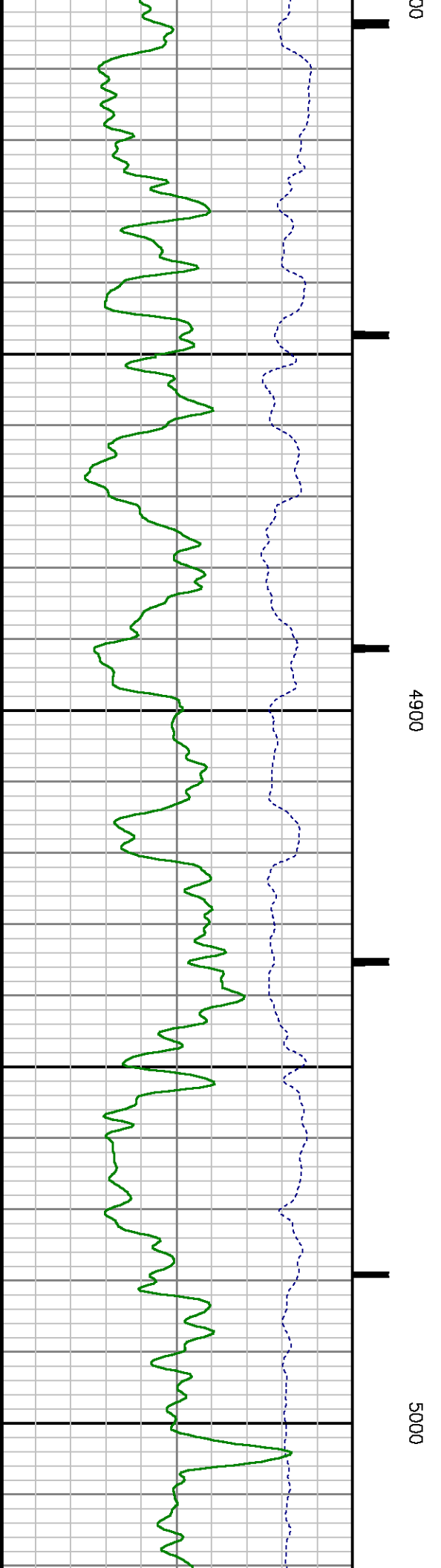
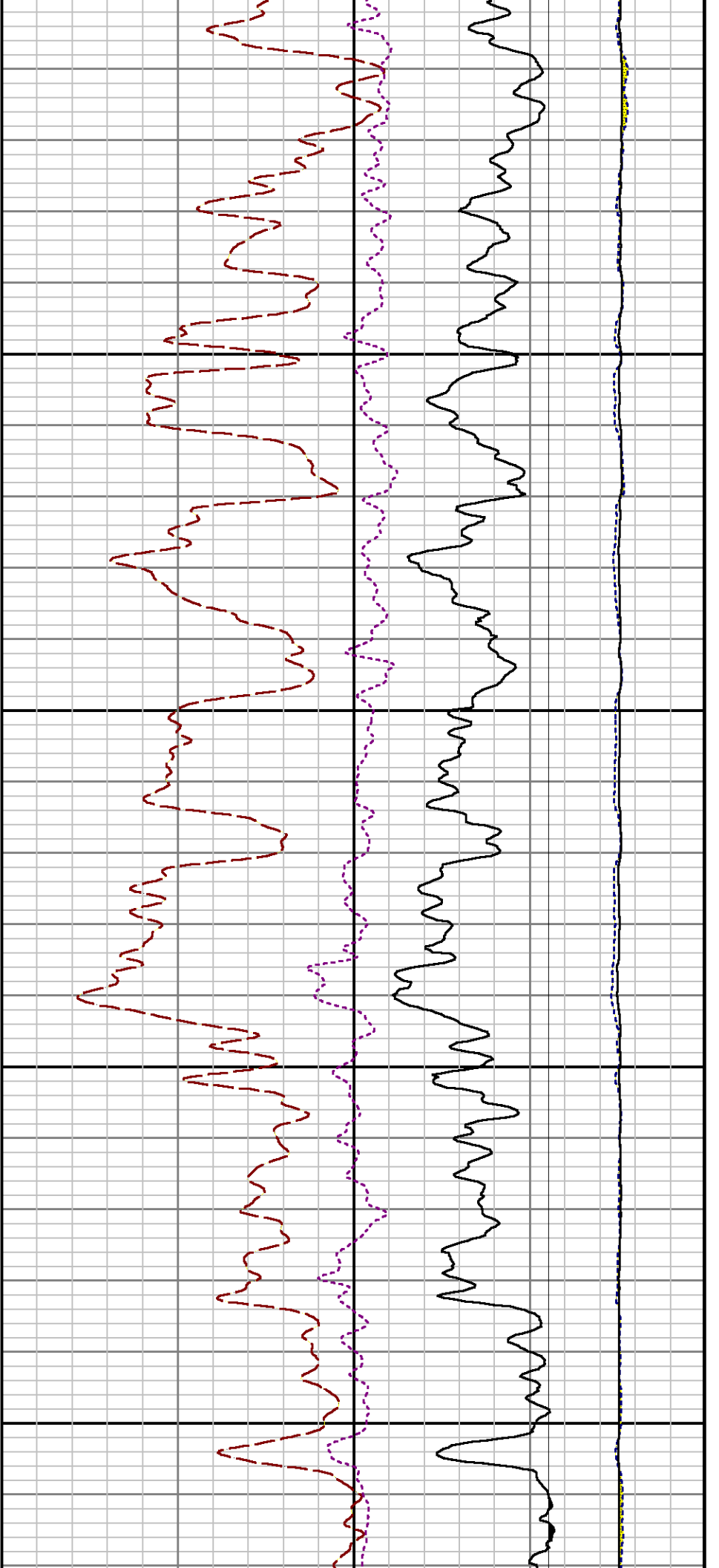
Created by : RPM9, v5.3.1.0

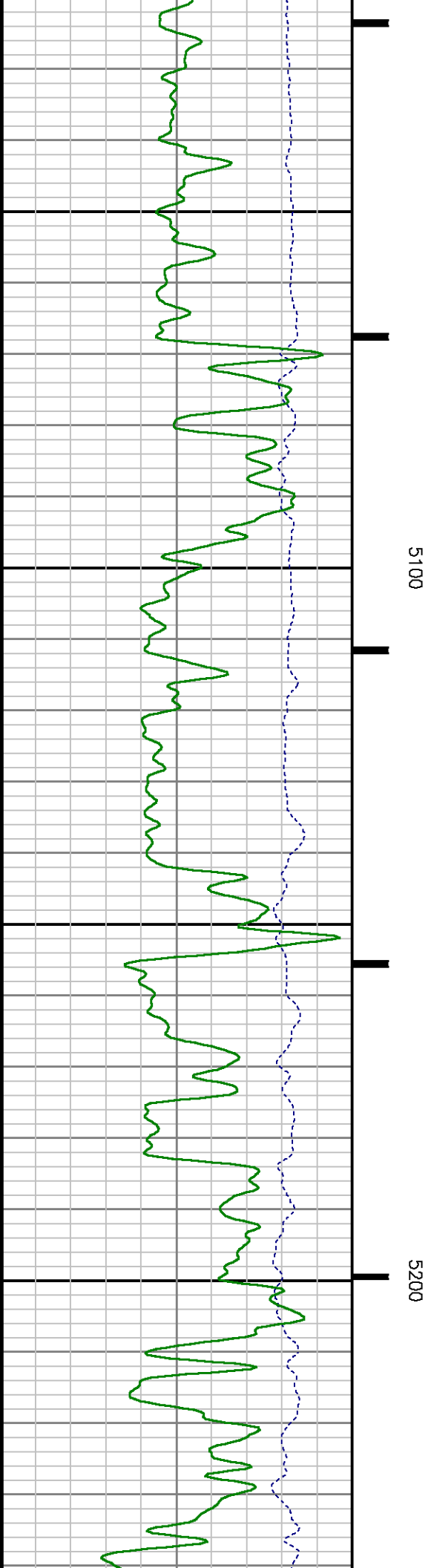
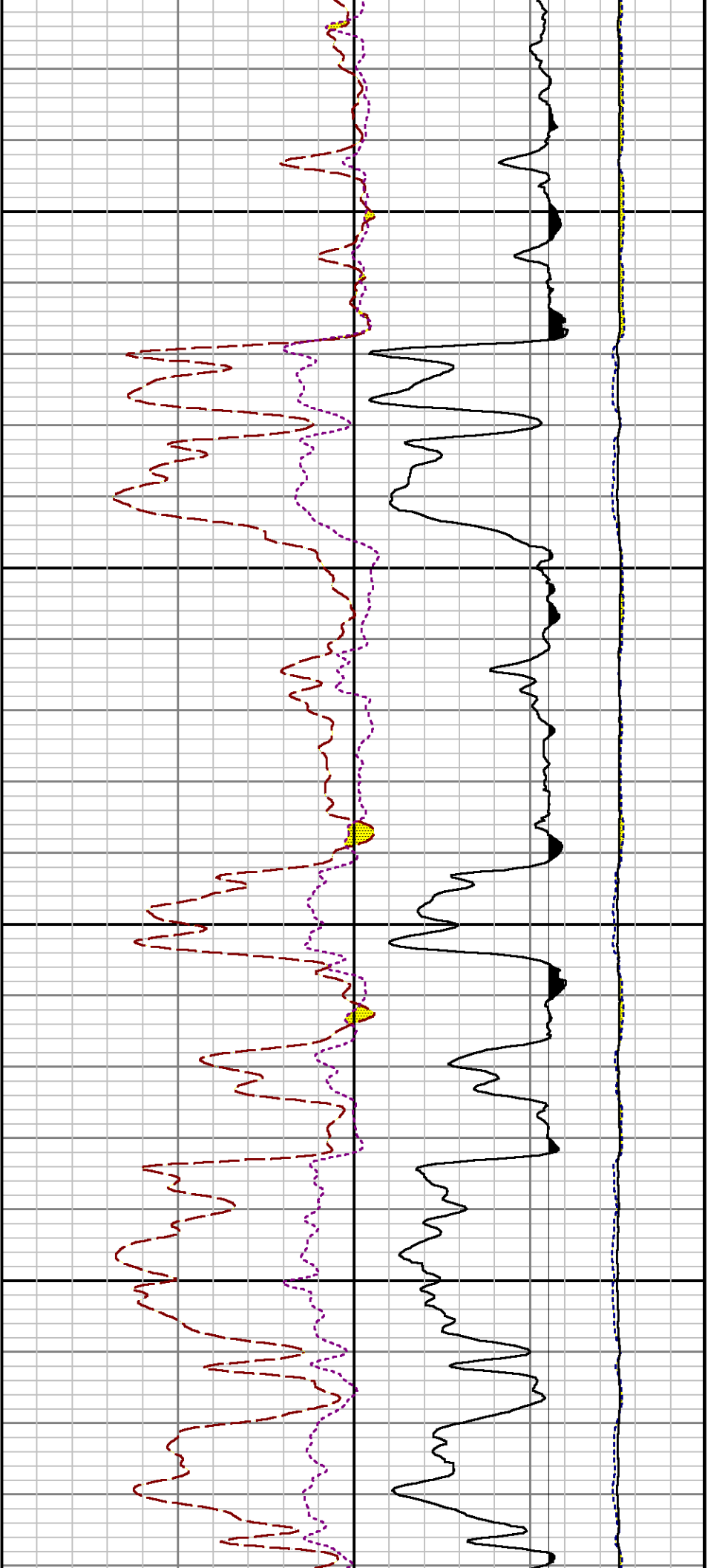
Plotted by : PlotMgr, v5.4.504

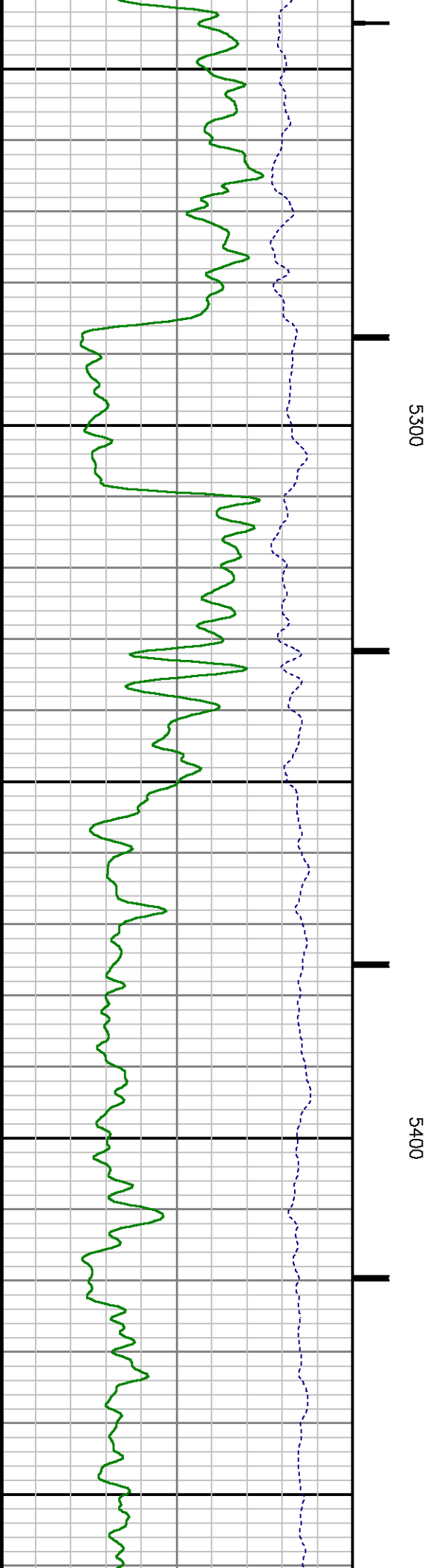
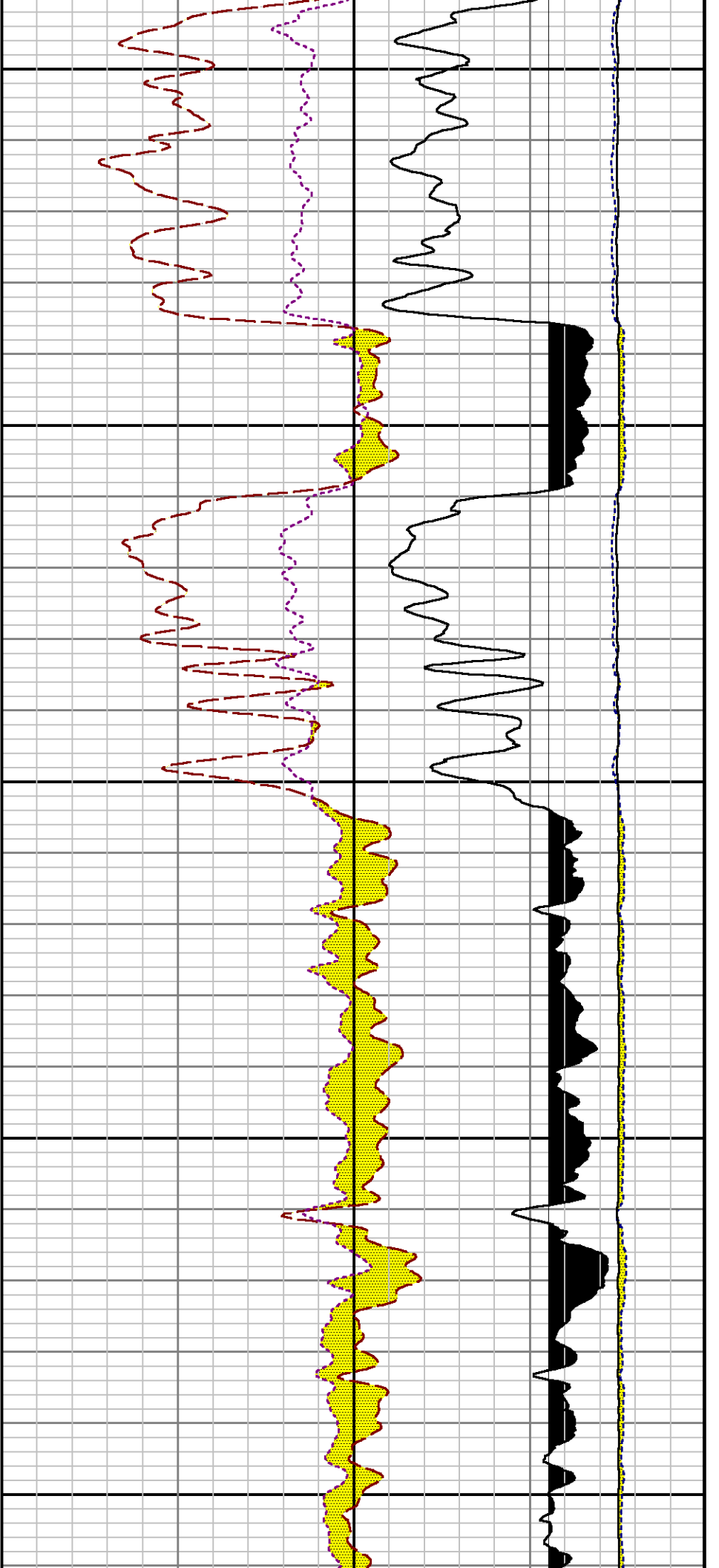
Company : WPX ENERGY

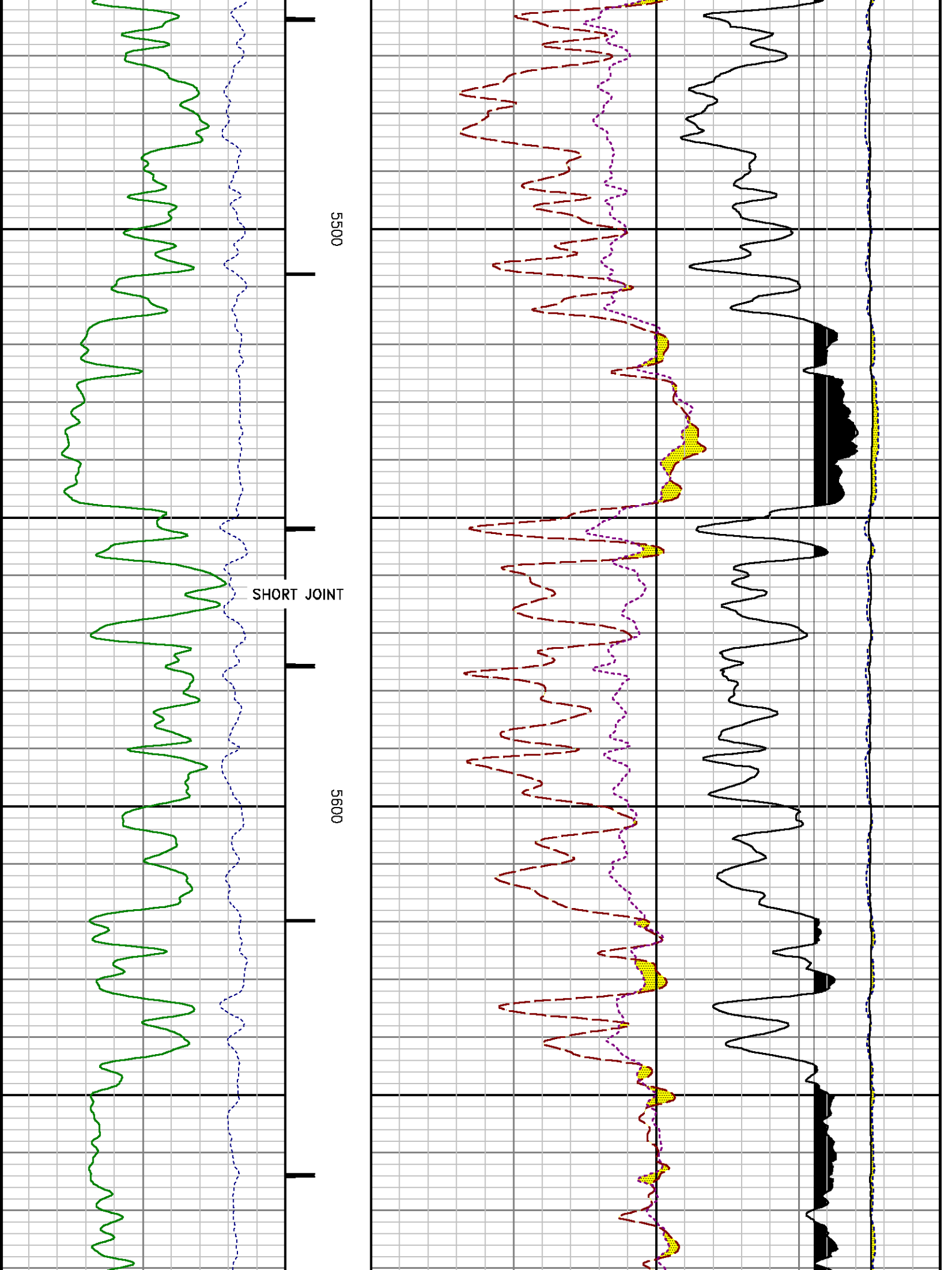
Well : SAVAGE RWF 421-25

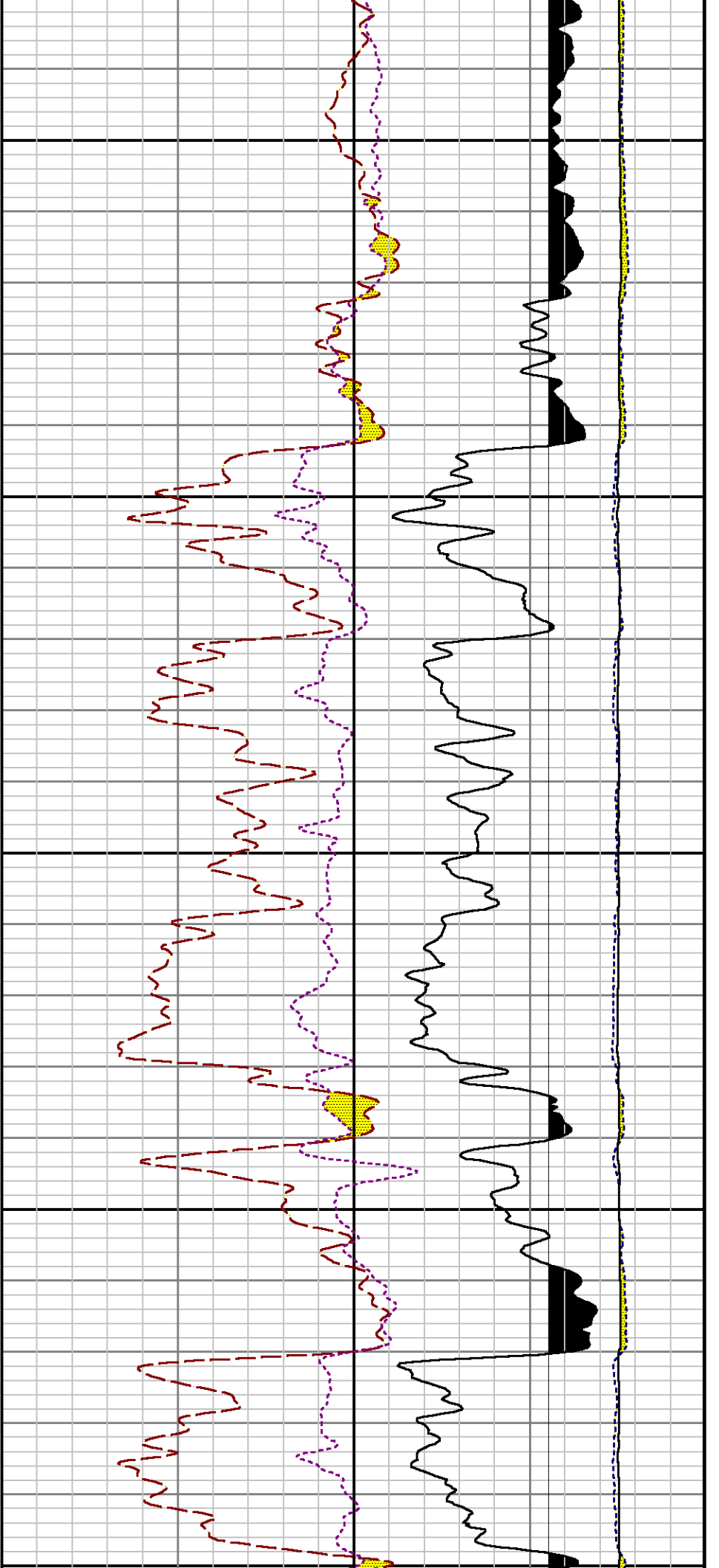








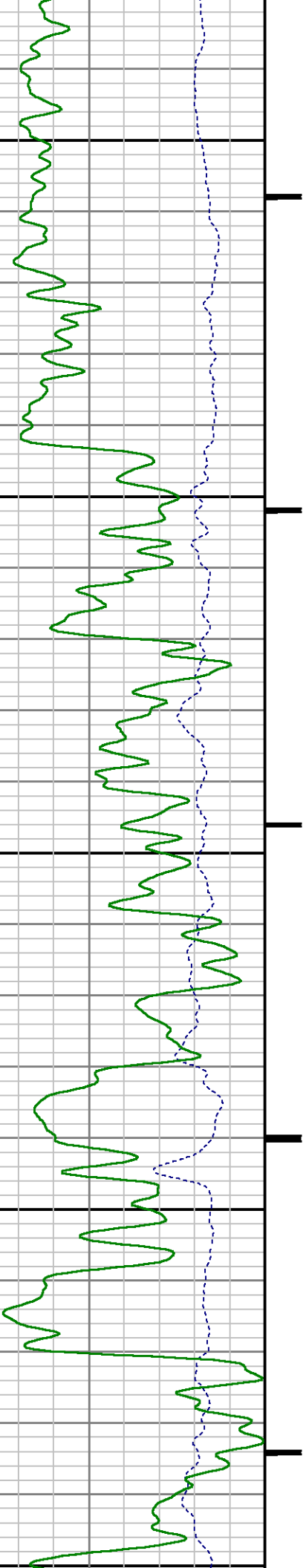


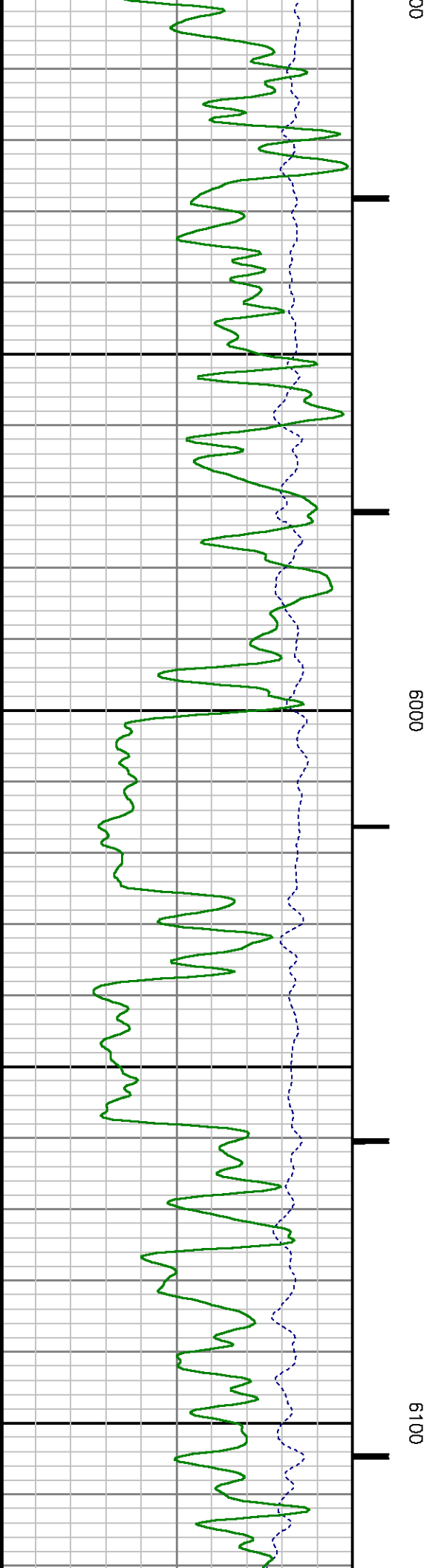
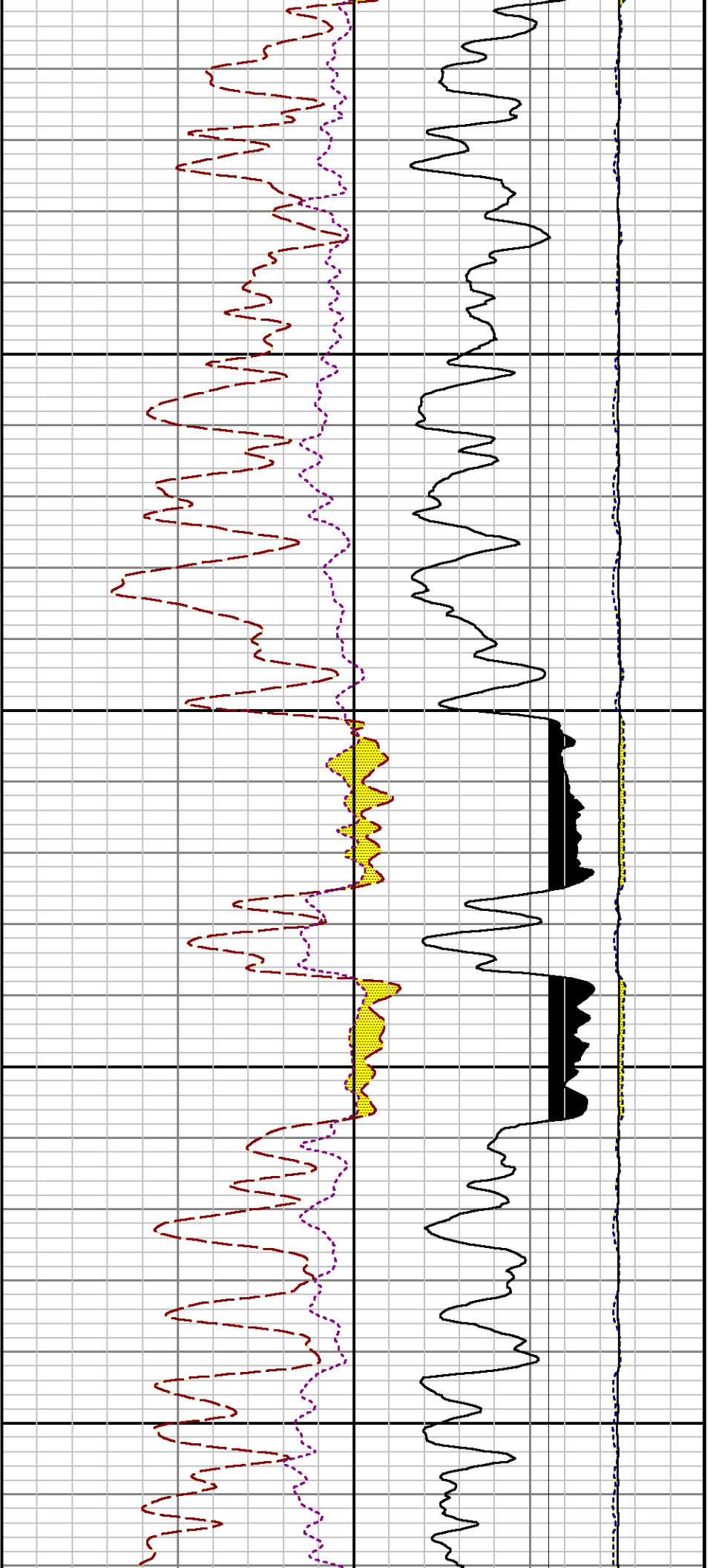


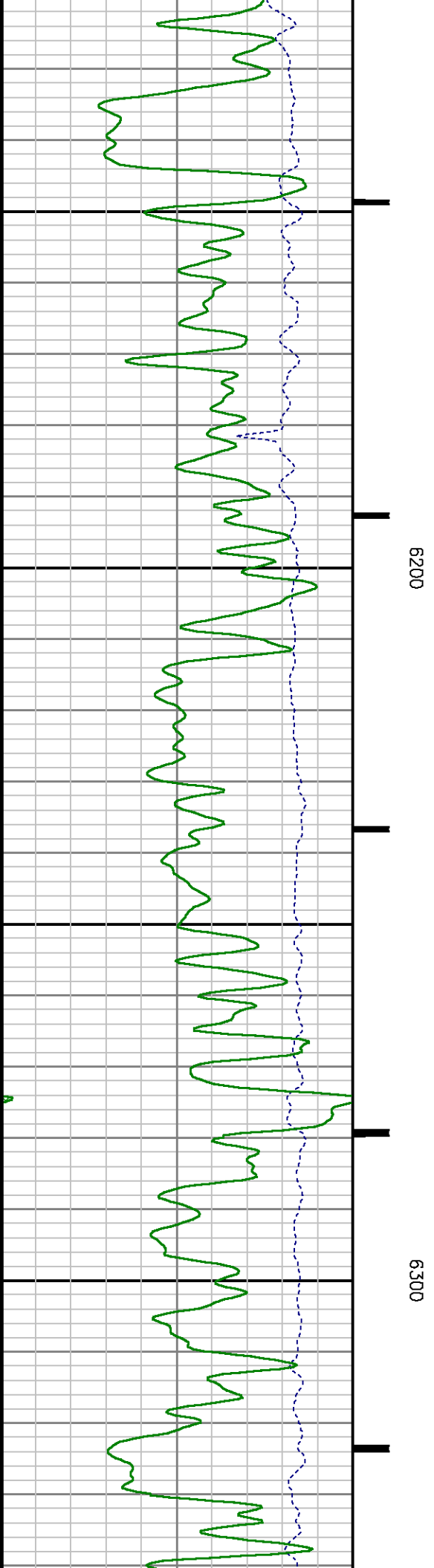
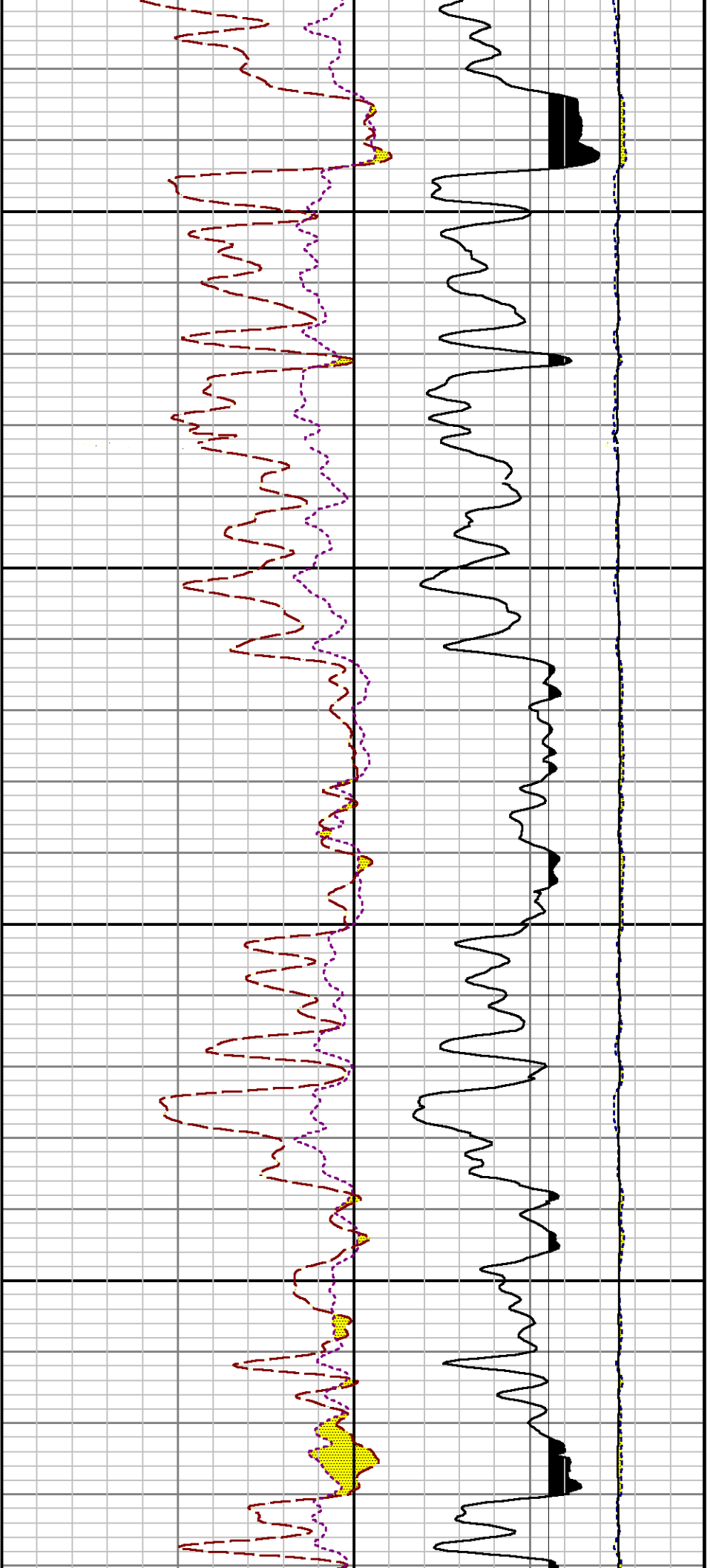
5700

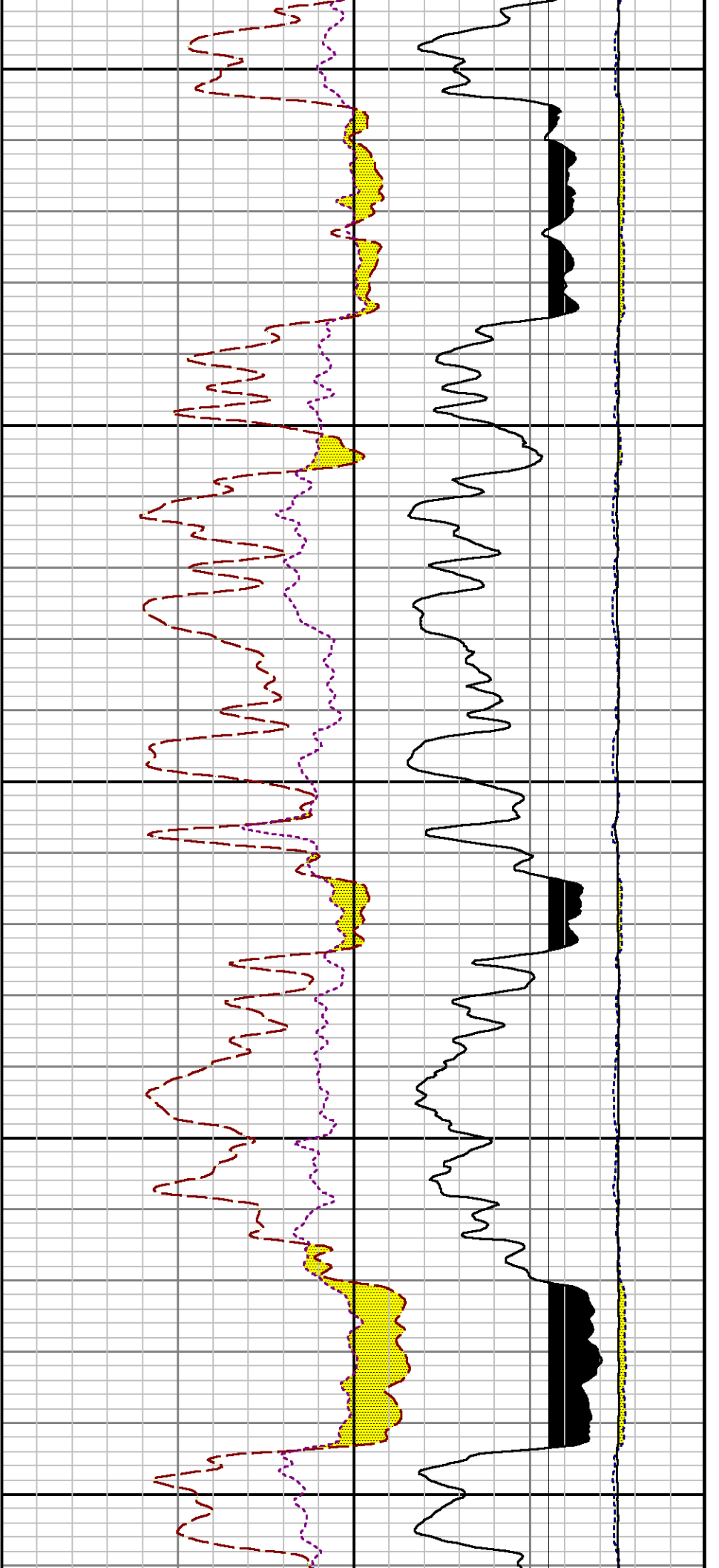
5800

59



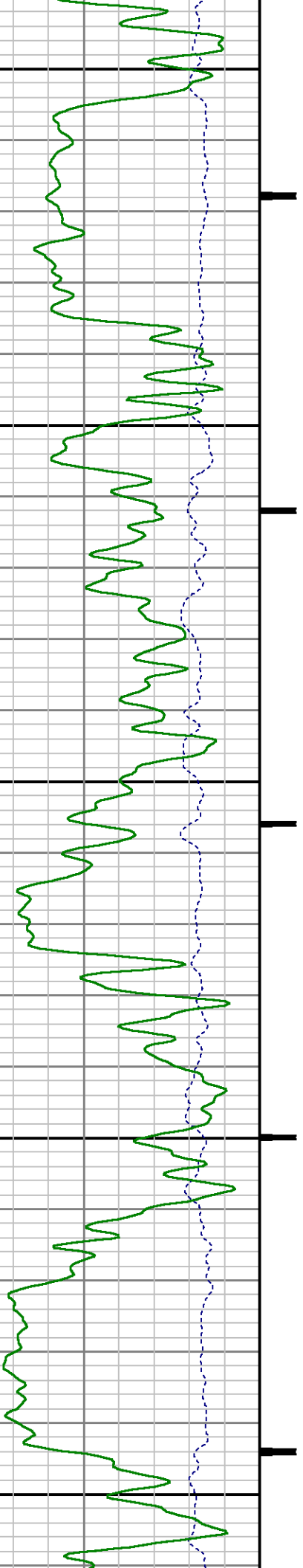


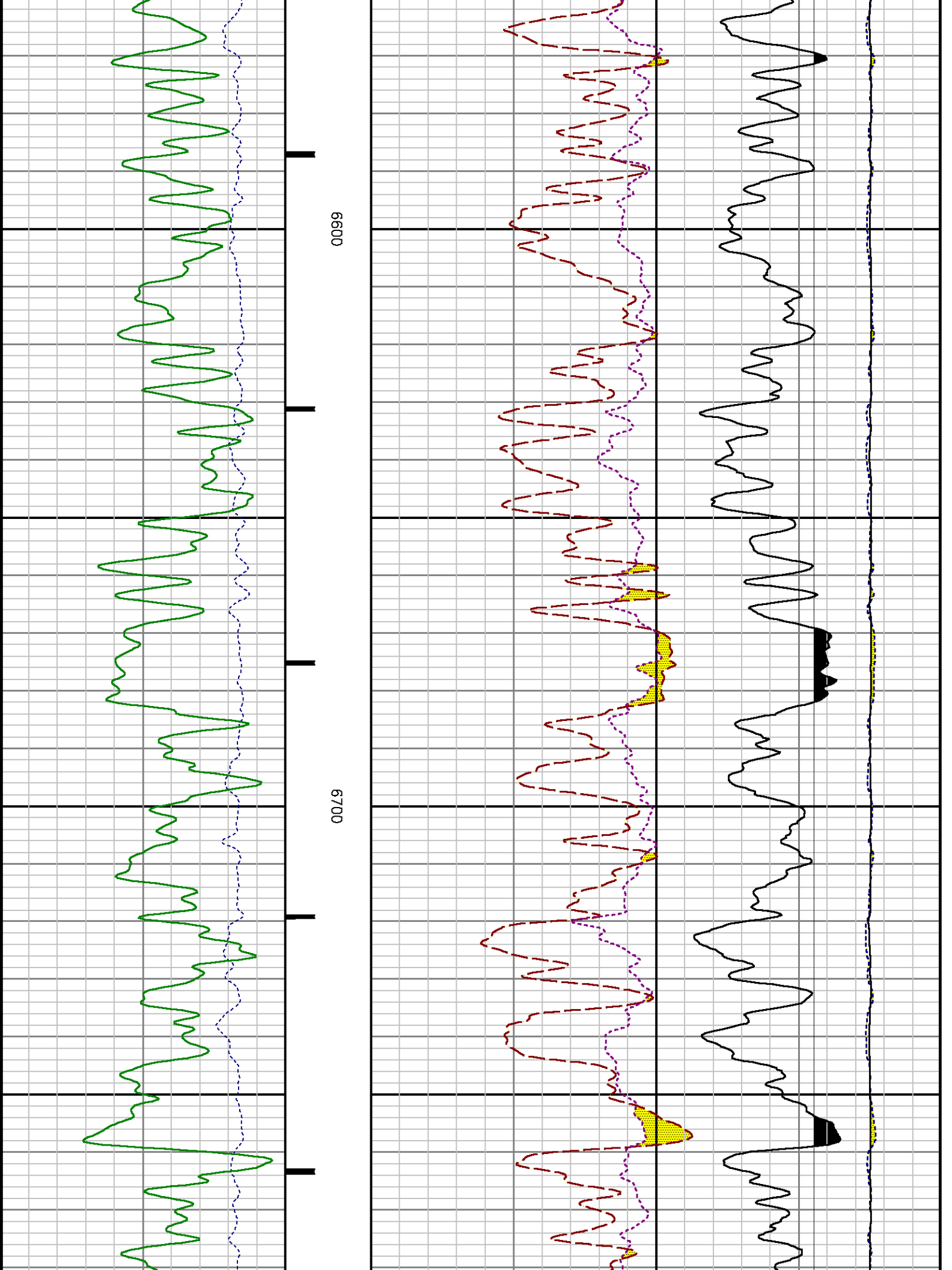


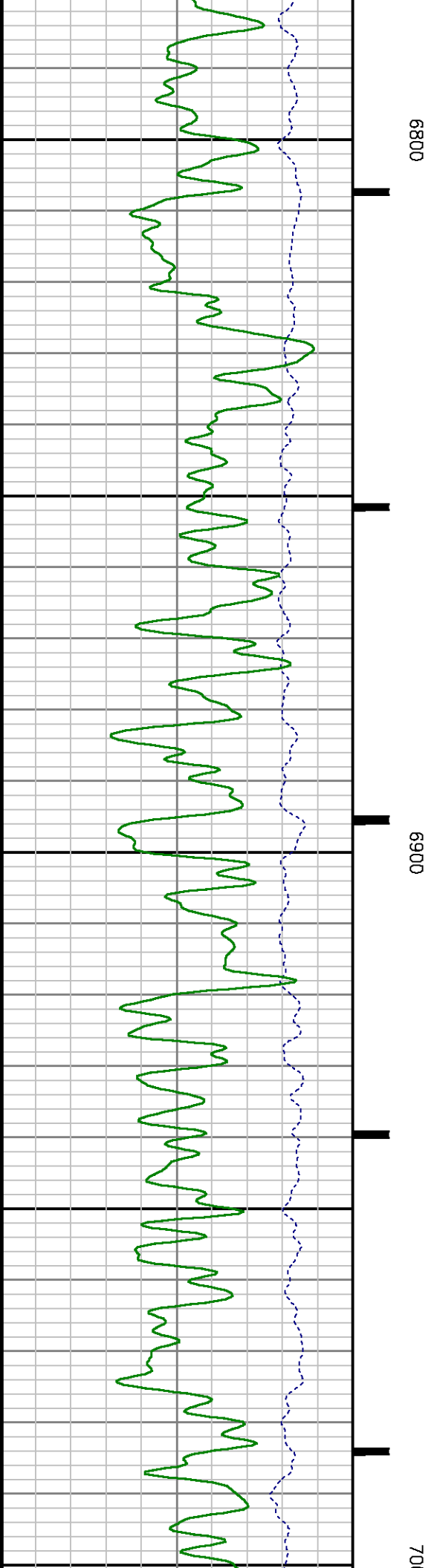
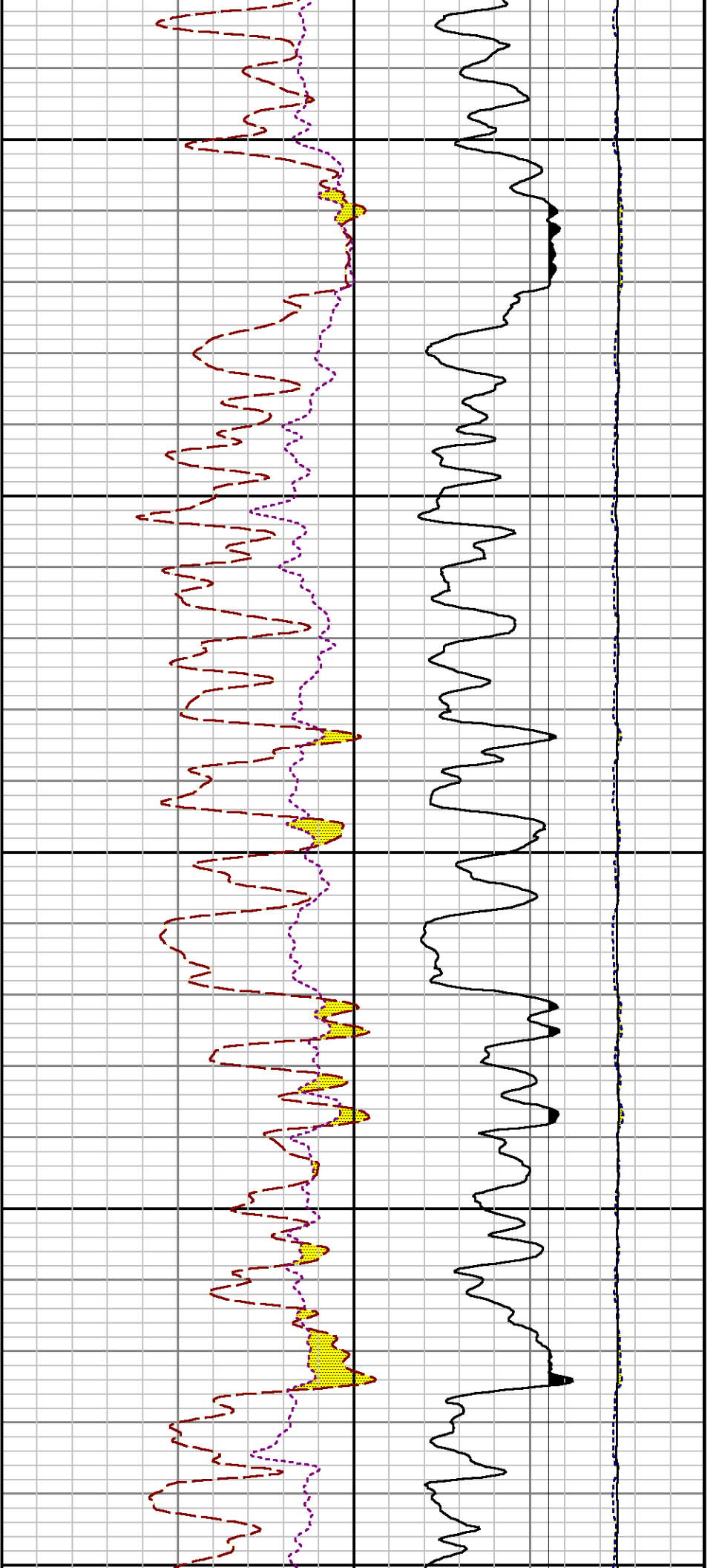


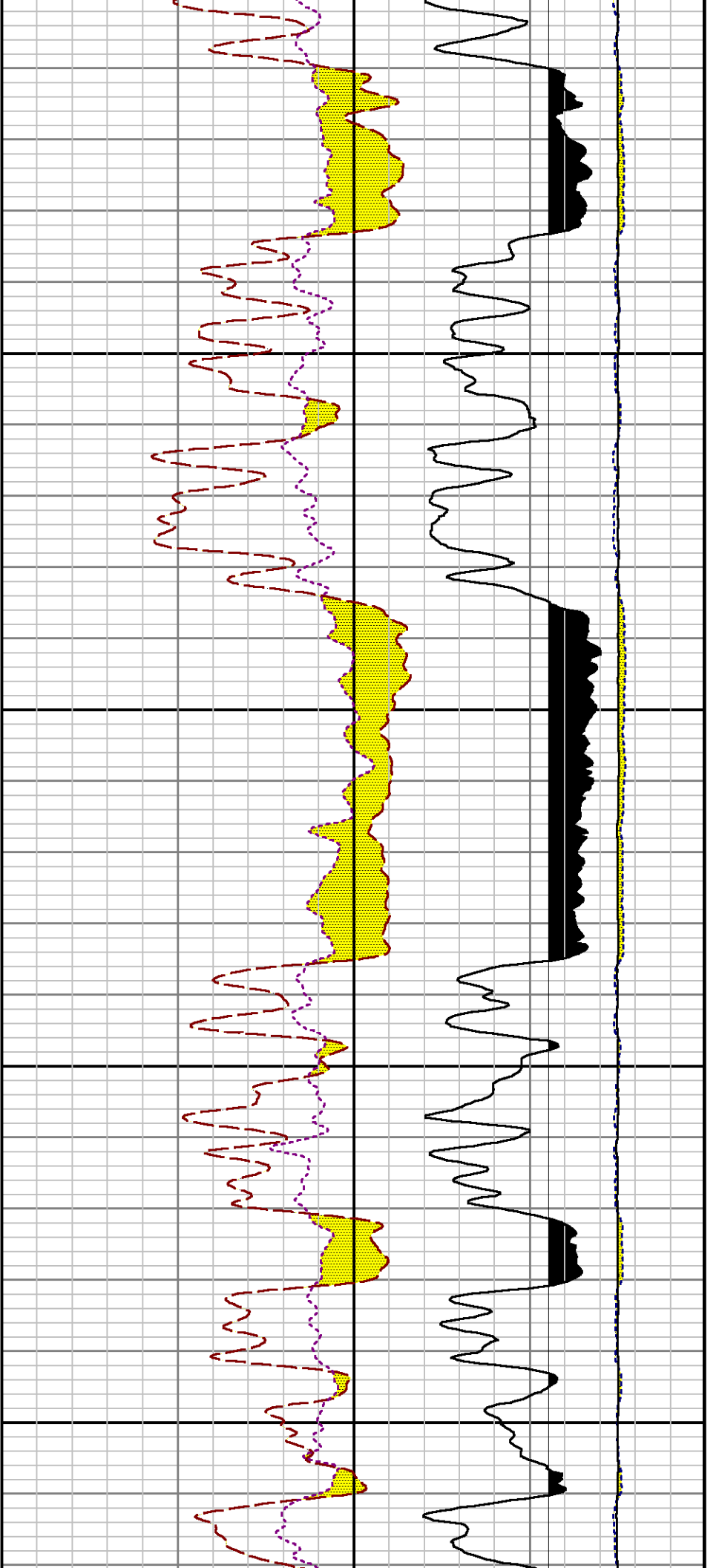
6400

6500





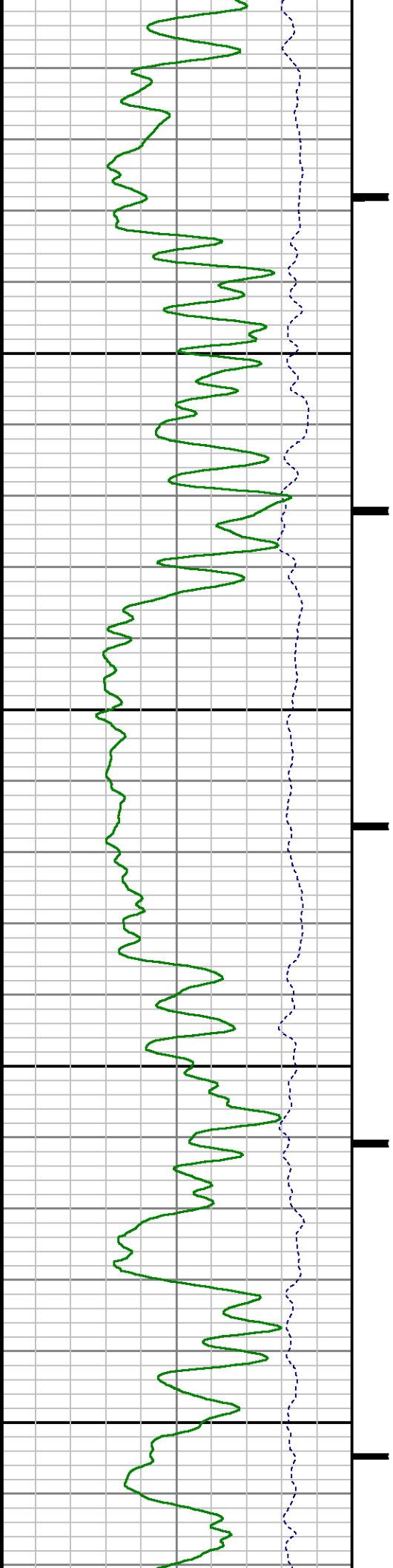


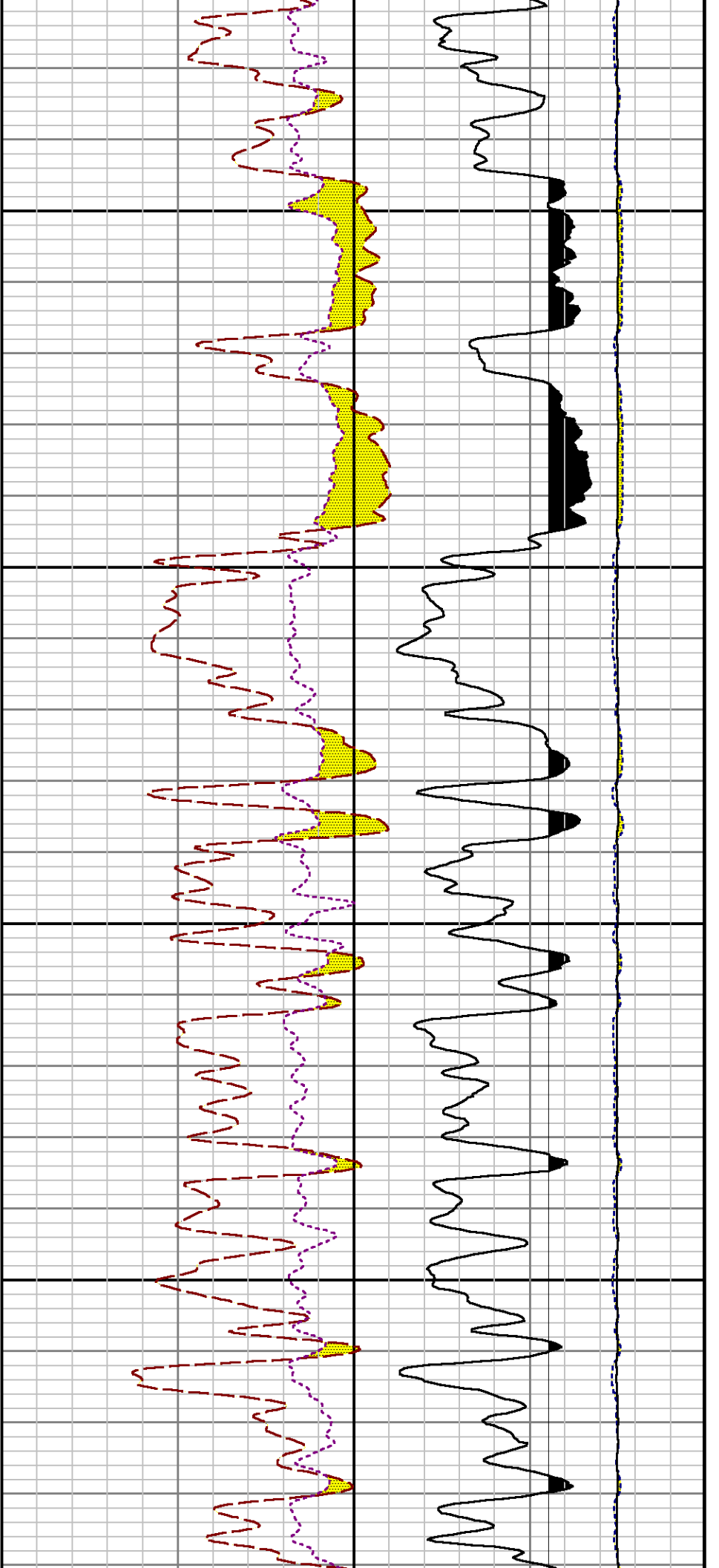


0.00

7100

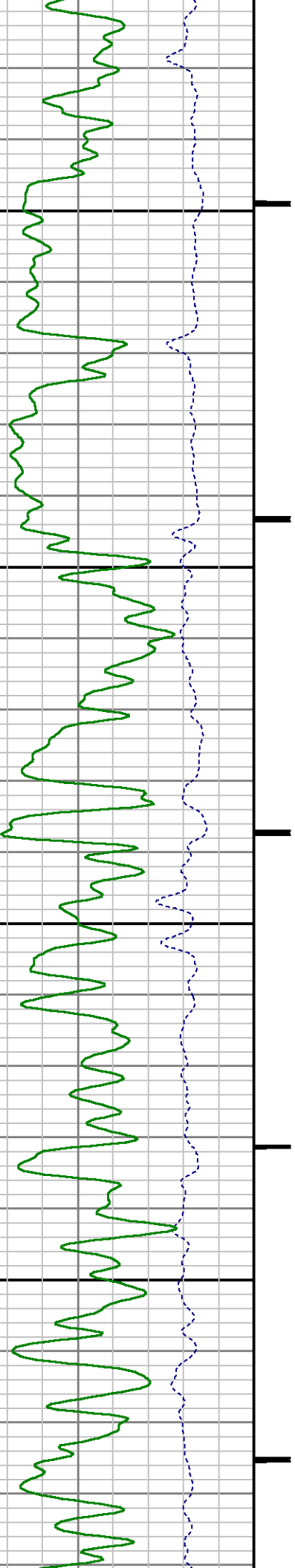
7200

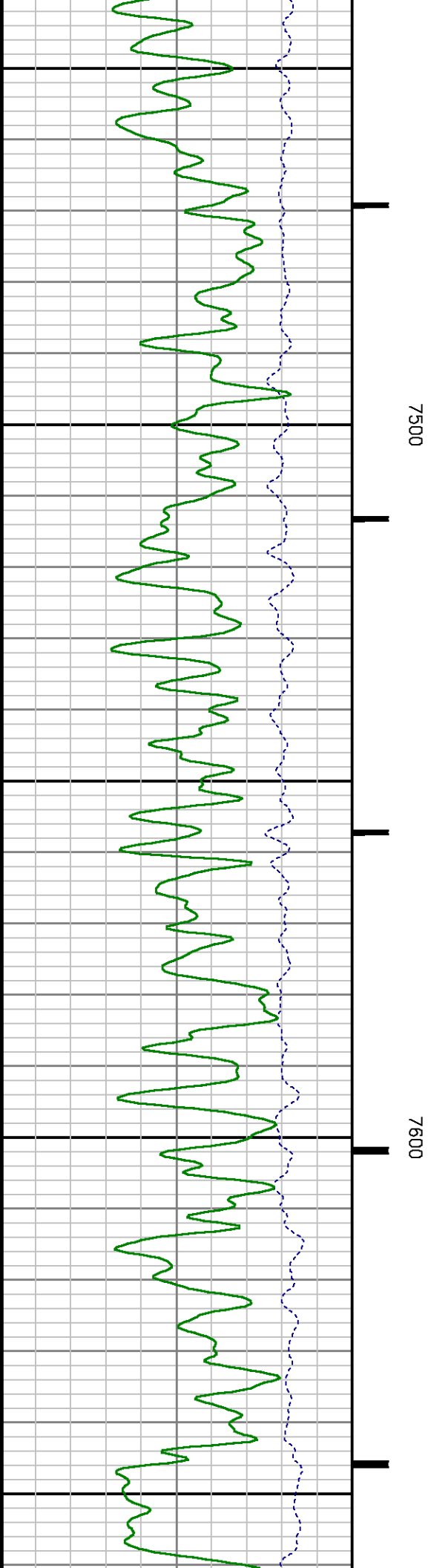
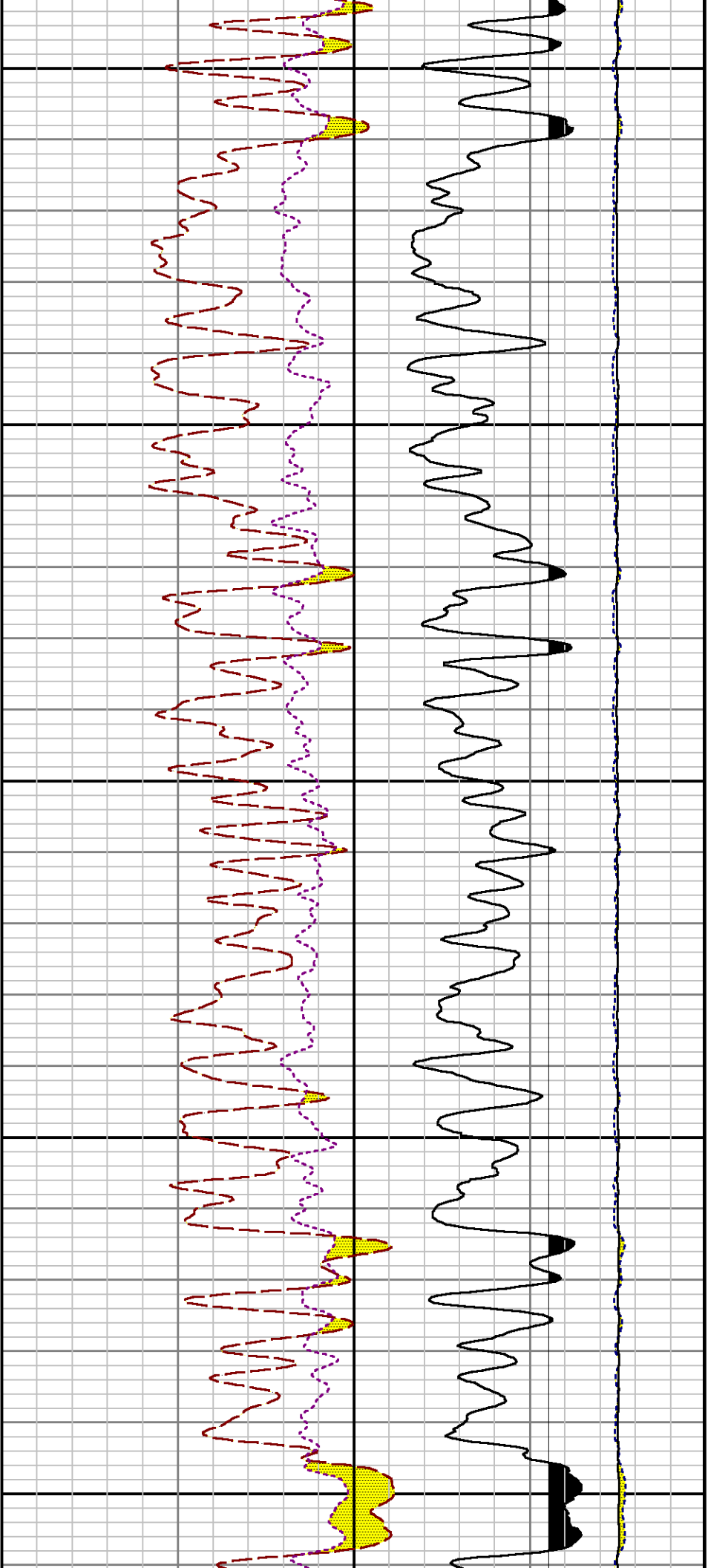


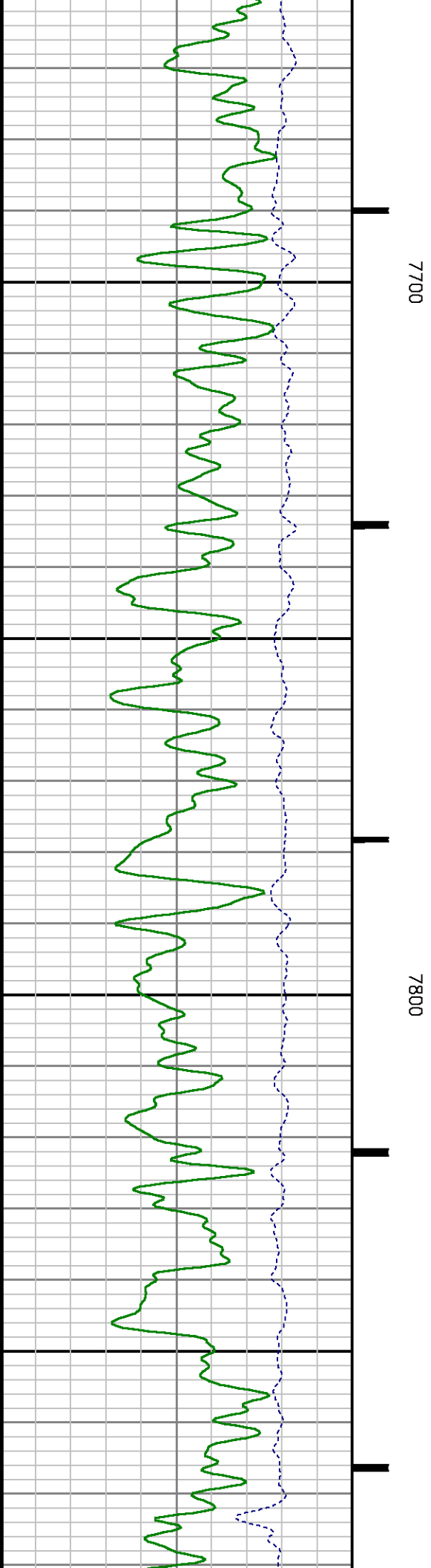
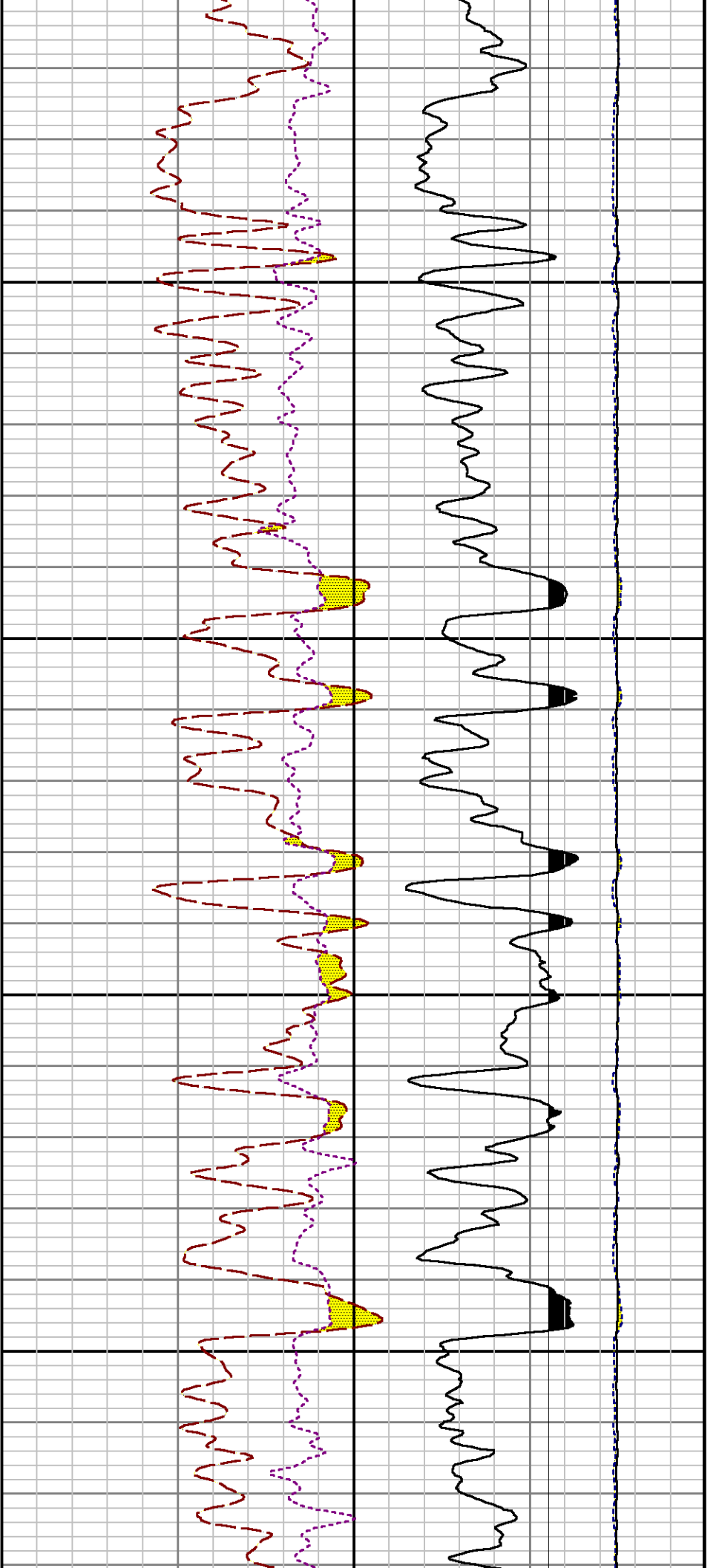


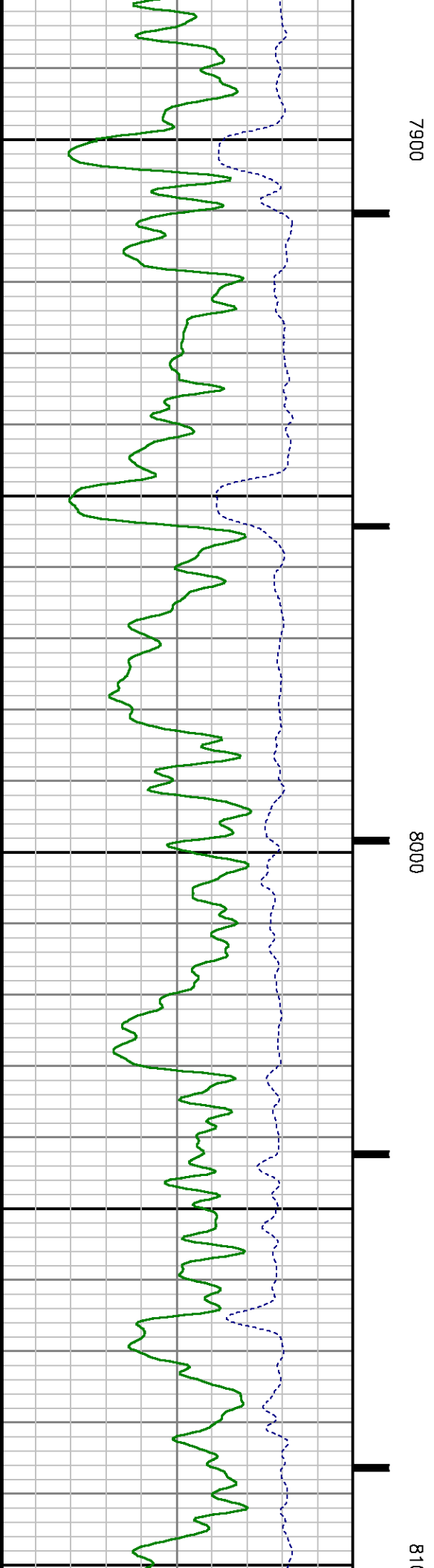
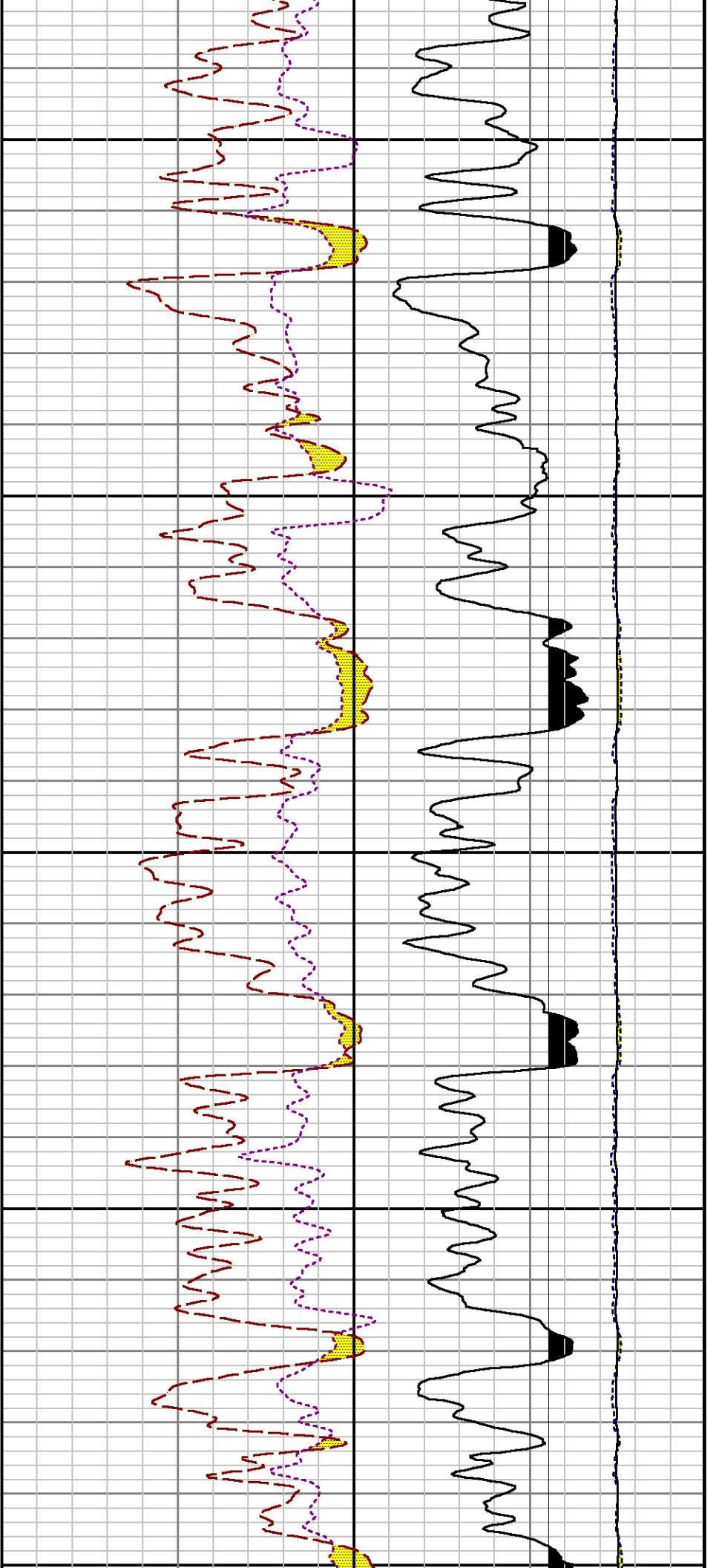
7300

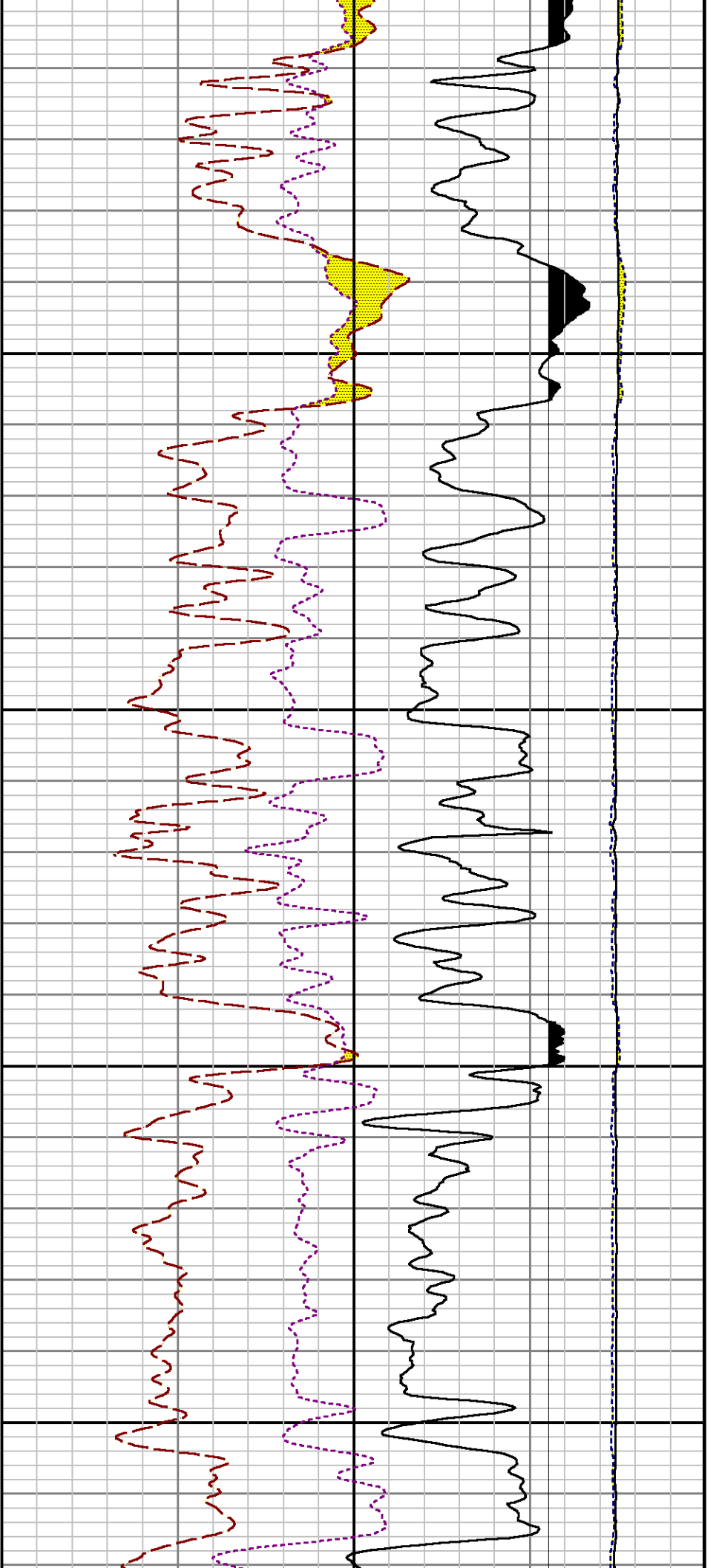
7400







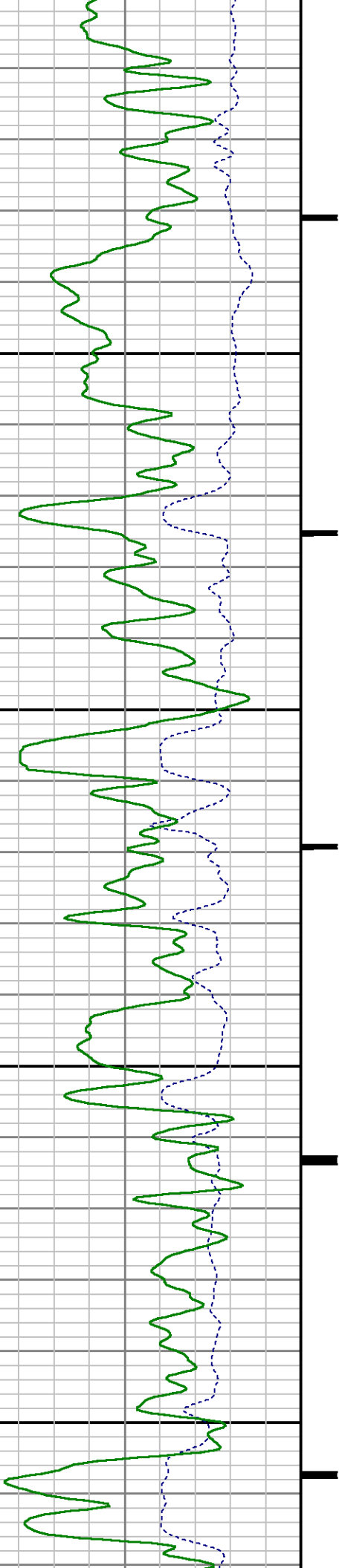


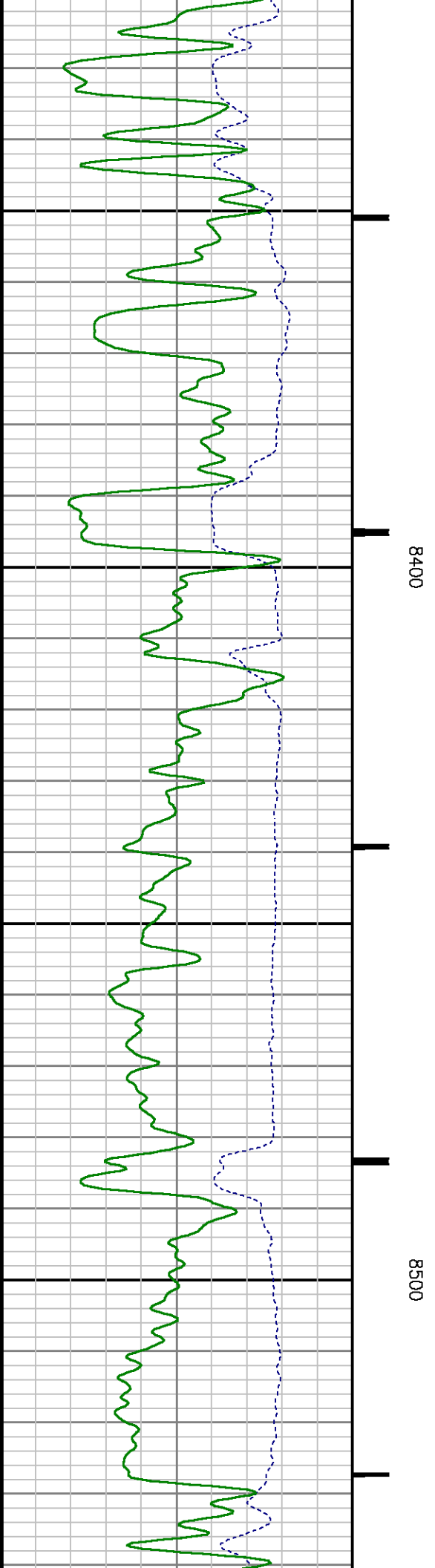
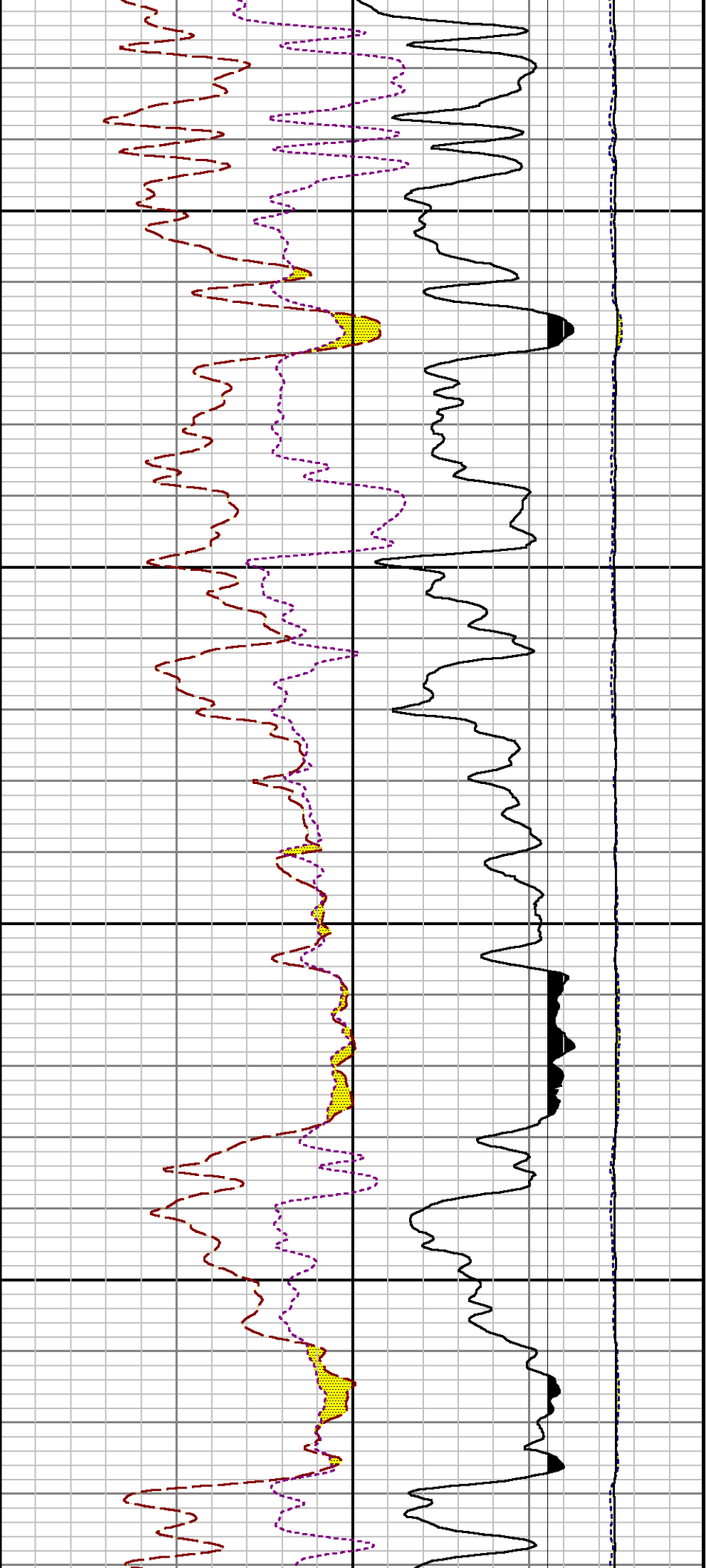


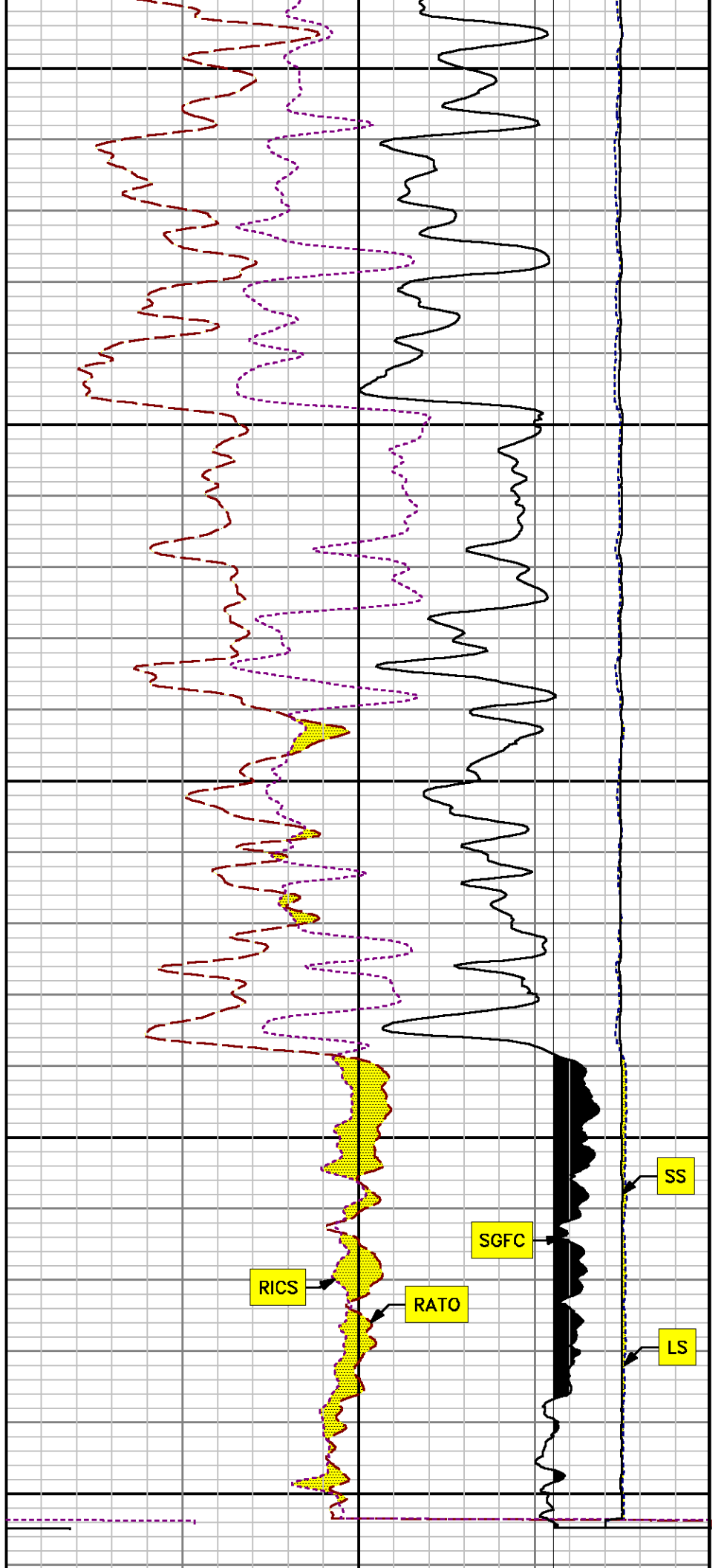
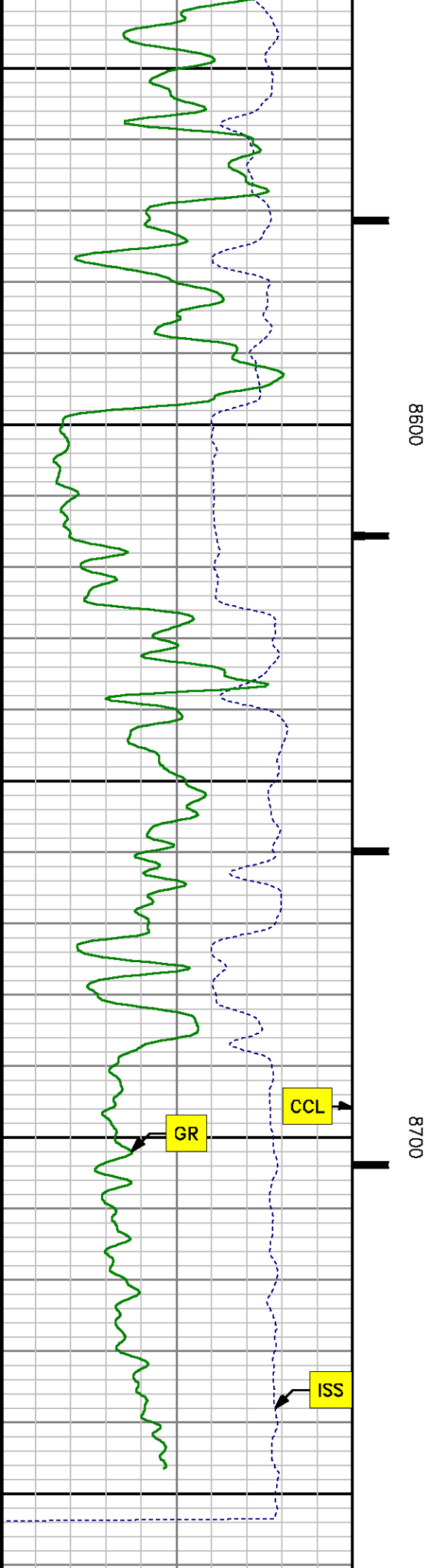
800

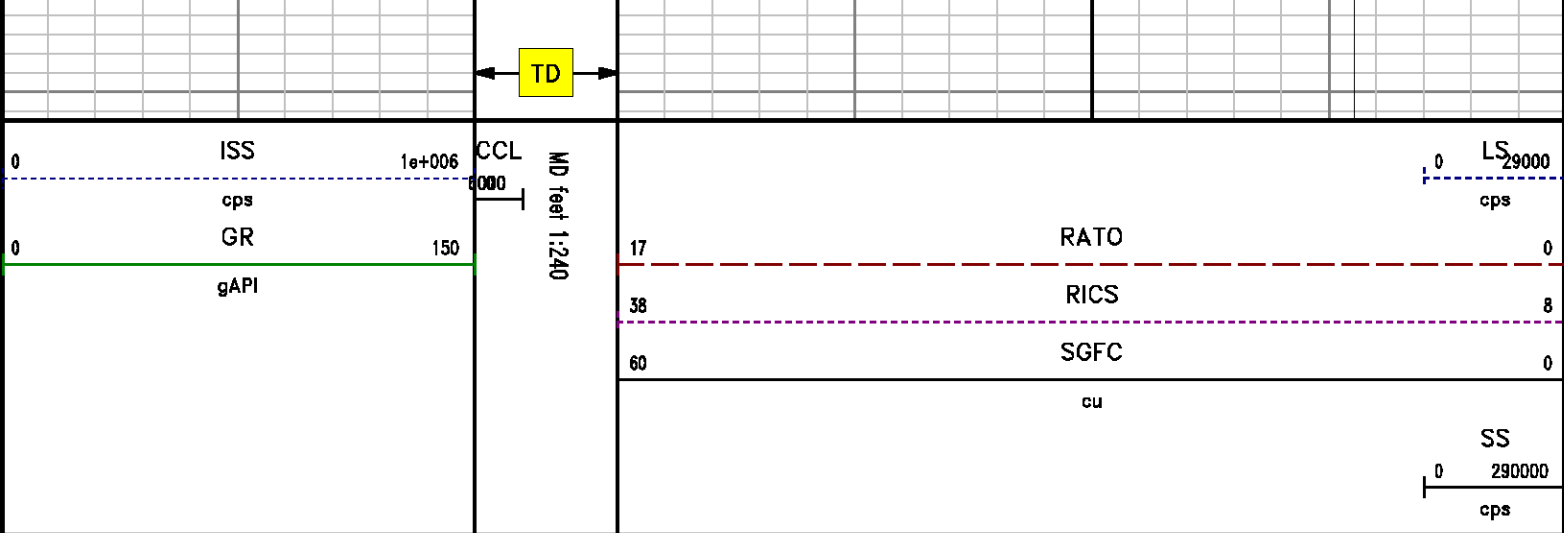
8200

8300









REPEAT SECTION PNC 3-D MODE

SPL PROCESSING

MEASUREMENT TYPE	PARAMETER	VALUE	UNITS	TOP	BOTTOM
PNC Porosity	Borehole	Cased		7924.686	8252.874
PNC Porosity	Borehole Size	8.750	inch	7924.686	8252.874
PNC Porosity	Casing Size	4.500	inch	7924.686	8252.874
PNC Porosity	Gas Filled	Non Gas Filled		7924.686	8252.874
PNC Porosity	Matrix	Sandstone		7924.686	8252.874

DEPTH OFFSETS (for Acquired Curves)

SERIES	DEPTH OFFSET	ACQUIRED CURVES					
8248ED	-14.478	FLTM					
8248ED	-12.478	CCL	CHV				
2812LA	-9.928	GR					
8281XA	-0.662	HVC3Q0	SEQ3	AMA3	AML3	BKX	CXS
		CPT3Q0	CPT3Q2	CPT3Q3	CPT3Q4	ET3	IXS
		MCS3	MCS3Q0	QCAL3	RGN3	RICX	SDA3
		SDL3	SGA3	SGL3	STA3	XS	ASPEC3

		AMB3	AMF3	CHF3	IXSC	IXSN	RAT023
		RICXC	RIN13C	RIN23	RIN23C	SD3D	SG3D
		SGB3	SGF3	WDTH3	CXSR	IXSR	XSR
		RICXR					
8281XA	-0.250	HVC2Q0	SEQ2	AMA2	AMB2	AMF2	AML2
		BKL	CHF2	CLS	CPT2Q0	CPT2Q2	CPT2Q3
		CPT2Q4	ET2	ILS	LS	MCS2	MCS2Q0
		QCAL2	RGN2	RICL	RONE23	RTW023	SDA2
		SDL2	SGA2	SGB2	SGF2	SGK2	SGL2
		STA2	ASPEC2	ILSC	ILSN	WDTH2	RICLC
		CLSR	ILSR	LSR	RICLR		
8281XA	0.000	CPRS	HVC1Q0	MV	SEQ	SEQ1	AMA1
		AMB1	AME1	AMF1	AML1	BKS	CHF1
		CSS	CORB	CORF	CPT1Q0	CPT1Q2	CPT1Q2A
		CPT1Q2B	CPT1Q2C	CPT1Q3	CPT1Q4	CPT1Q5	ET1
		G1	G2	GE1S	GE2S	ISS	MCS1
		MCS1Q0	QA1	QCAL1	QM1	RAT0	RAT013
		RBOR	RGN1	RICS	RIN	RONE	RPOR
		RTW0	RIN13	RONE13	RTW013	SALB	SC1
		SDA1	SDL1	SGA1	SGB1	SGBC	SGE1
		SGF1	SGFC	SGK1	SGL1	SS	SS2
		STA1	PD1S	PD2S	PD3S	MD1S	MD2S
		MD3S	DG1S	DG2S	DG3S	PD1M	PD2M
		PD3M	MD1M	MD2M	MD3M	DG1M	DG2M
		DG3M	MVS	MA	MVM	FILV	IAM
		TA	PVM	PVS	IAS	SSTAT	QPD1
		QPD2	QPD3	QMD1	QMD2	QMD3	QDG1
		QDG2	QDG3	QMA	QTA	QFILV	QMV
		QPV	QIA	DERR	DCNT	QPK1	QSA1
		PKS1	ASPEC1	HOC	FE2XC	ISSC	RINC
		ISSN	RDEN	WDTH1	RICSC	CSSR	G1R
		G2R	ISSR	SSR	SS2R	RATOR	RAT013R
		RBORR	RICSR	RINR	RIN13R	RONER	RPORR
		RTWOR					
SYSTEM	0.000	TEN	TTEN				

Created by : RPM9, v5.3.1.0

Plotted by : PlotMgr, v5.4.504

Company : WPX ENERGY

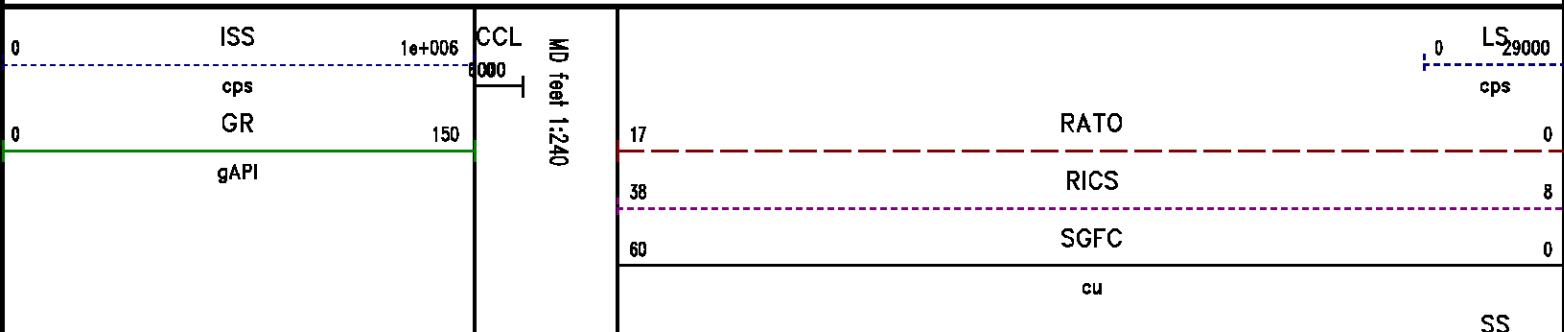
Well : SAVAGE RWF 421-25

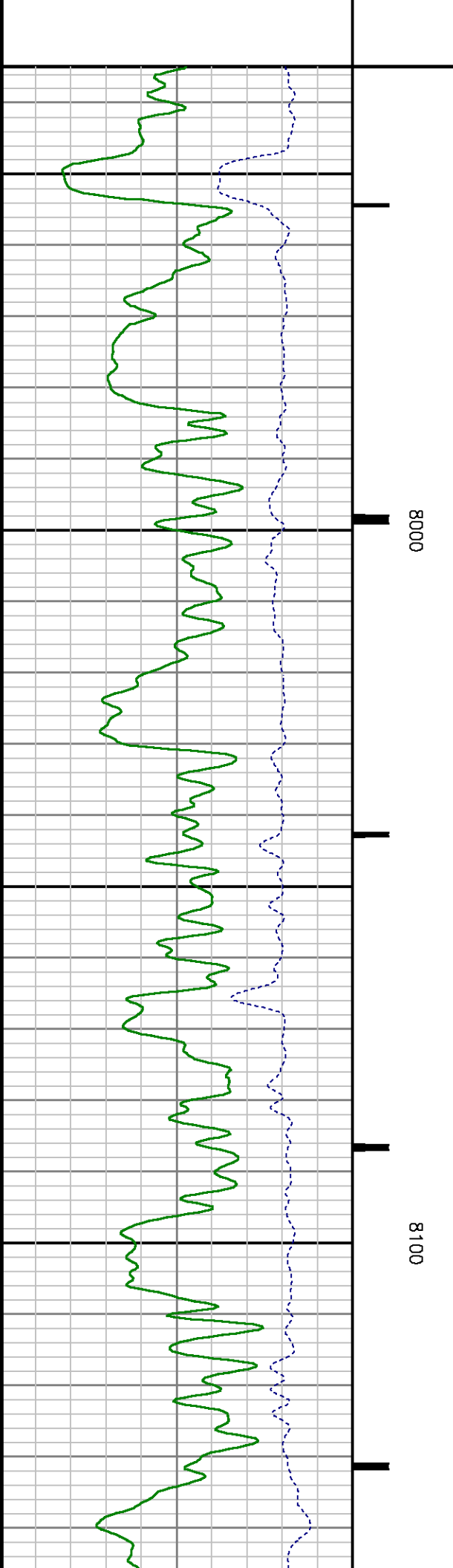
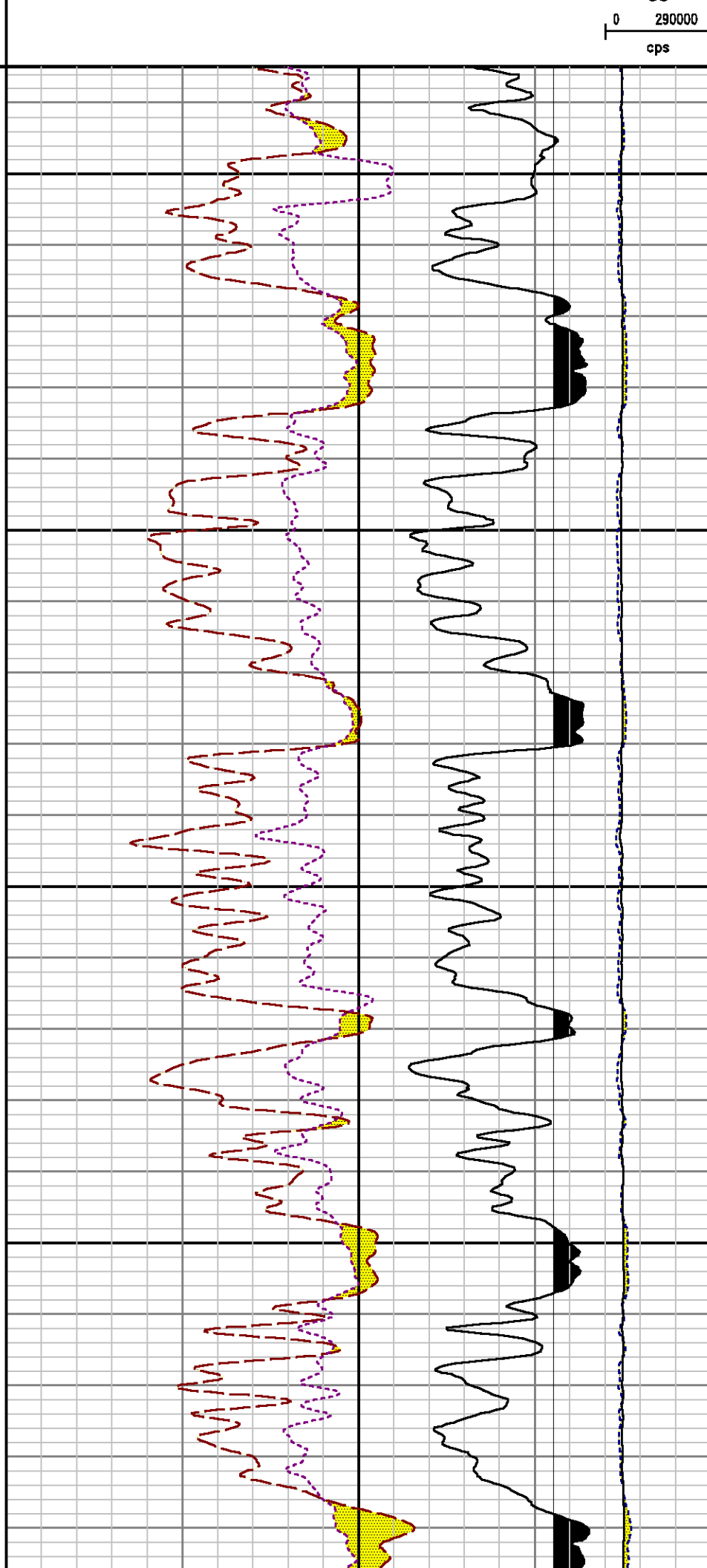
File Name : d:\welldata\wp\savege rwf 421-25\rpm421\repeat.xtf

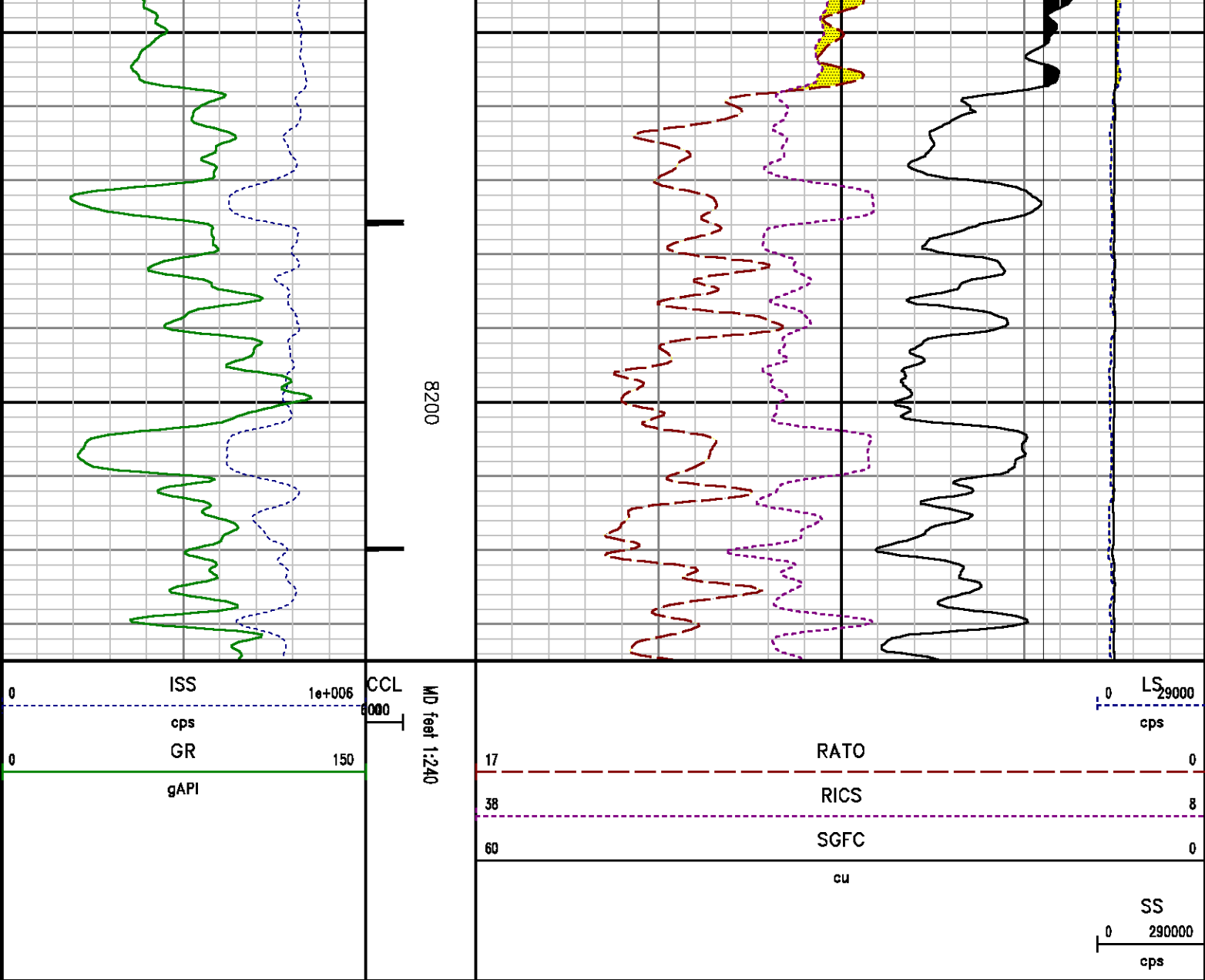
Mode : PlotMgr 5.4.504

Interval : 7935.00 - 8235.00 feet UP

Created : 4/18/2014 11:31:56 AM







CALIBRATION SUMMARY

PNC

Calibration File: C:\case\calver\PNC\555M9.cal

PNC 3D CALIBRATION SUMMARY

DATE/TIME PERFORMED: Wed Mar 19 13:00:45 2014

TOOL SERIES: 8281XA

ASSET:

555

SEQ:

M9

Calibrator #

GJ SHOP

Source #

8281AA 11765054

	ISS	Mtr Vlt (V)	SS Gain	LS Gain	XLS Gain	EA Temp (degF)	Sync Delay (usec)	RCAL
Raw Data	828510	123.00	2335.00	2277.00	2252.00	249.68	7.00	0.9906
Interpolated	1300000	145.10	2311.86	2271.07	2254.75			

	ISS	BKS	BKL	BKX	SGA1	SDA1	SGA2	SDA2
Raw Data	828510	6884.46	1096.29	161.14	25.84	0.14	24.30	0.27
					25.35 26.40	0.00 0.20	23.60 24.80	0.00 0.40

	ISS	ILS	IXS	SS	SS2	LS	CSS	CLS
Raw Data	828510	181350.16	28522.48	94363.43	33608.06	8829.67	57083.04	14131.70
Fit Quality %		0.32	0.57	0.82	0.83	0.49	0.73	0.48

	ISS	RBOR	RIN ISS/ILS	RIN13 ISS/IXS	RICS ISS/CSS	RATO SS/LS	RTWO SS2/LS	RONE CSS/CLS
Raw Data	828510	1.43	4.57	29.05	14.51	10.69	3.81	4.04
		1.42 1.45	3.55 5.52	22.20 32.70	10.99 16.34	10.06 11.10	3.57 3.95	3.76 4.22
Fit Quality %		0.04	0.40	0.32	0.17	0.15	0.18	0.18
Reduced	1381461	1.43	4.60	29.25	14.63	10.68	3.80	4.03
		1.42 1.45	4.33 5.52	27.60 32.70	13.70 16.34	10.06 11.10	3.57 3.95	3.76 4.22

GAMMA RAY

Calibration File: C:\case\calver\GR\38529.cal

CALIBRATION SUMMARY

DATE/TIME PERFORMED:	Sat Mar 29 18:08:14 2014	TOOL SERIES:	2812LA	ASSET:	385	SEQ:	29
Calibrator #	Background	Calibrator On	Multiplicative	Background	Calibrator On	Differential	
	[cps]	[cps]		[api]	[api]	[api]	
S2K WA-612	58.40	281.04	0.943	55.08	265.08	210.00	

Verification File: C:\case\calver\GR\38529.VP

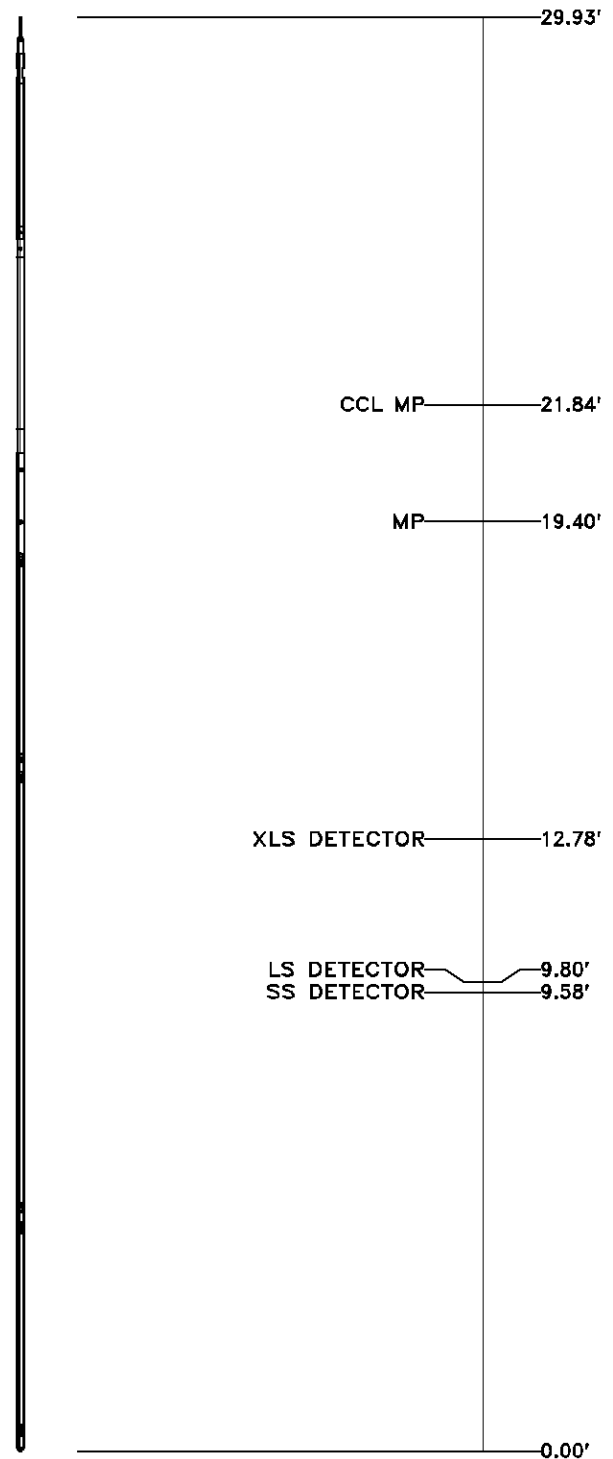
PRIMARY VERIFICATION

DATE/TIME PERFORMED:	Sat Mar 29 18:12:15 2014	TOOL SERIES:	2812LA	ASSET:	385	SEQ:	29
Calibrator #	Background	Calibrator On	Multiplicative	Background	Calibrator On	Differential	
	[cps]	[cps]		[api]	[api]	[api]	
S2K WA-612	58.02	282.82	0.943	54.73	266.76	212.03	

TOOL DIAGRAM

OTA SHORT CABLE HEAD	
PCM POWER SUPPLY	
Series	8250EA
Mnemonic	PCM
Diameter	1.70"
Weight	18.00 lb
Length	3.86'
Temp Rating	350.00 °F
TELEMETRY / CCL	
Series	8248EA
Mnemonic	PCM
Diameter	1.70"
Weight	20.00 lb
Length	4.46'
Measure Point	1.00' CCL MP
Temp Rating	350.00 °F
Press Rating	15000.00 PSI
SONDEX GAMMA RAY	
Series	2812LA
Mnemonic	SNDX
Diameter	1.69"

RESERVOIR PERFORMANCE MONITOR	
Series	8281XA
Mnemonic	RPM
Diameter	1.70"
Weight	75.00 lb
Length	18.58'
Measure Point	9.49' SS DETECTOR
Measure Point	9.72' LS DETECTOR
Measure Point	12.69' XLS DETECTOR
Temp Rating	350.00 °F
Press Rating	20000.00 PSI



Total Length: 29.93'
 Total Weight: Not Available
 Max Diameter: 0' 1.70"



Baker Atlas



Company	WPX ENERGY		File No:	CH084704
Well	SAVAGE RWF 421-25			
Field	RULISON		API No:	05045219680000
County	GARFIELD	State	CO	
Location			Elevations	
SHL: 2449' FNL & 1439' FWL			KB	6058 ft
BHL: 1094' FNL & 2120' FWL			DF	
			GL	6037 ft
SEC	25	TWP	6S	RGE 94W
			25 6S 94W	
			RWF 22-25 PAD	
			CYCLONE 17	