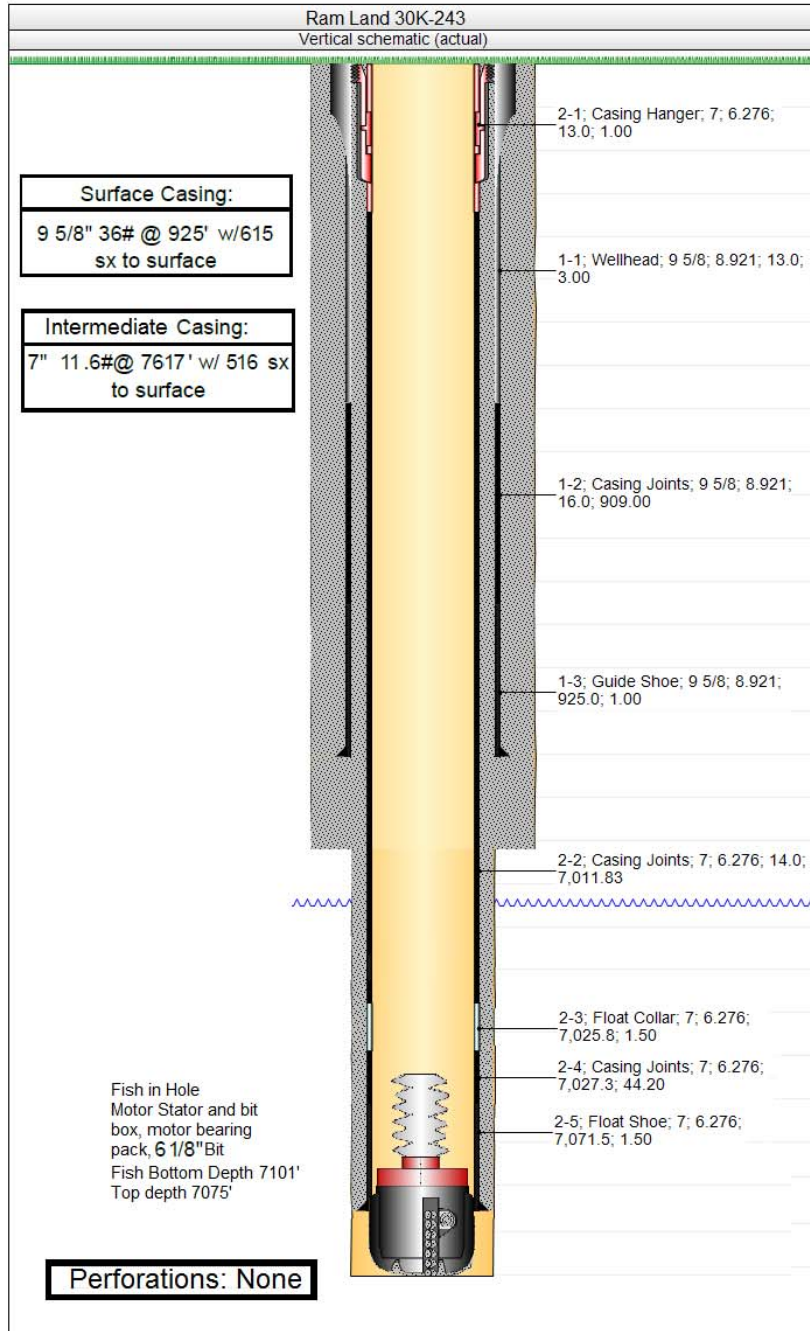




PDC Energy
 Ram Land 30K-243
 NWSW 30 4N 66W
 Weld County, CO
 Current Wellbore - NOT TO SCALE!!!
 5/20/14

API#: 05-123-38008



NOTES

During the drilling of the Ram Land 30K-243 well, API [05-123-38008](#), PDC encountered difficulties after running 7" casing and attempting to drill out and not have the ability to drill further into the lateral we POH with directional tools, it was noticed that the bit and bottom of the mud motor parted and stayed in the well. The decision was made to plug back the hole after multiple failed fishing attempts.