

Caerus Oil & Gas LLC

PUCKETT #218-25

LOCATED IN GARFIELD COUNTY, COLORADO
SECTION 25, T6S, R97W, 6th P.M.



PHOTO: VIEW OF EXISTING WELL HEAD

CAMERA ANGLE: WESTERLY



PHOTO: VIEW OF EXISTING ACCESS

CAMERA ANGLE: WESTERLY



- Since 1964 -

U&LS

Uintah Engineering & Land Surveying

85 South 200 East Vernal, Utah 84078
(435) 789-1017 * FAX (435) 789-1813

LOCATION PHOTOS

05 **23** **13**
MONTH DAY YEAR

TAKEN BY: B.J.

DRAWN BY: A.T.

REV: 05-17-14 J.M.F.

PHOTO
P1

Caerus Oil & Gas LLC

PUCKETT #218-25

LOCATED IN GARFIELD COUNTY, COLORADO
SECTION 25, T6S, R97W, 6th P.M.



PHOTO: VIEW OF EXISTING WELL HEAD

CAMERA ANGLE: NORTHERLY



PHOTO: VIEW OF EXISTING WELL HEAD

CAMERA ANGLE: EASTERLY



- Since 1964 -

UELS

Uintah Engineering & Land Surveying

85 South 200 East Vernal, Utah 84078
(435) 789-1017 * FAX (435) 789-1813

LOCATION PHOTOS

05 **23** **13**
MONTH DAY YEAR

TAKEN BY: B.J.

DRAWN BY: A.T.

REV: 05-17-14 J.M.F.

PHOTO
P2

Caerus Oil & Gas LLC

PUCKETT #218-25

LOCATED IN GARFIELD COUNTY, COLORADO
SECTION 25, T6S, R97W, 6th P.M.



PHOTO: VIEW OF EXISTING WELL HEAD

CAMERA ANGLE: SOUTHERLY



PHOTO: VIEW OF EXISTING WELL HEAD

CAMERA ANGLE: WESTERLY



- Since 1964 -

UELS

Uintah Engineering & Land Surveying

85 South 200 East Vernal, Utah 84078
(435) 789-1017 * FAX (435) 789-1813

LOCATION PHOTOS

05 **23** **13**
MONTH DAY YEAR

TAKEN BY: B.J.

DRAWN BY: A.T.

REV: 05-17-14 J.M.F.

PHOTO
P3

Caerus Oil & Gas LLC

AS-BUILT SITE PLAN FOR

PUCKETT #218-25

SECTION 25, T6S, R97W, 6th. P.M.

SW 1/4 SW 1/4

FIGURE #1

SCALE: 1" = 60'

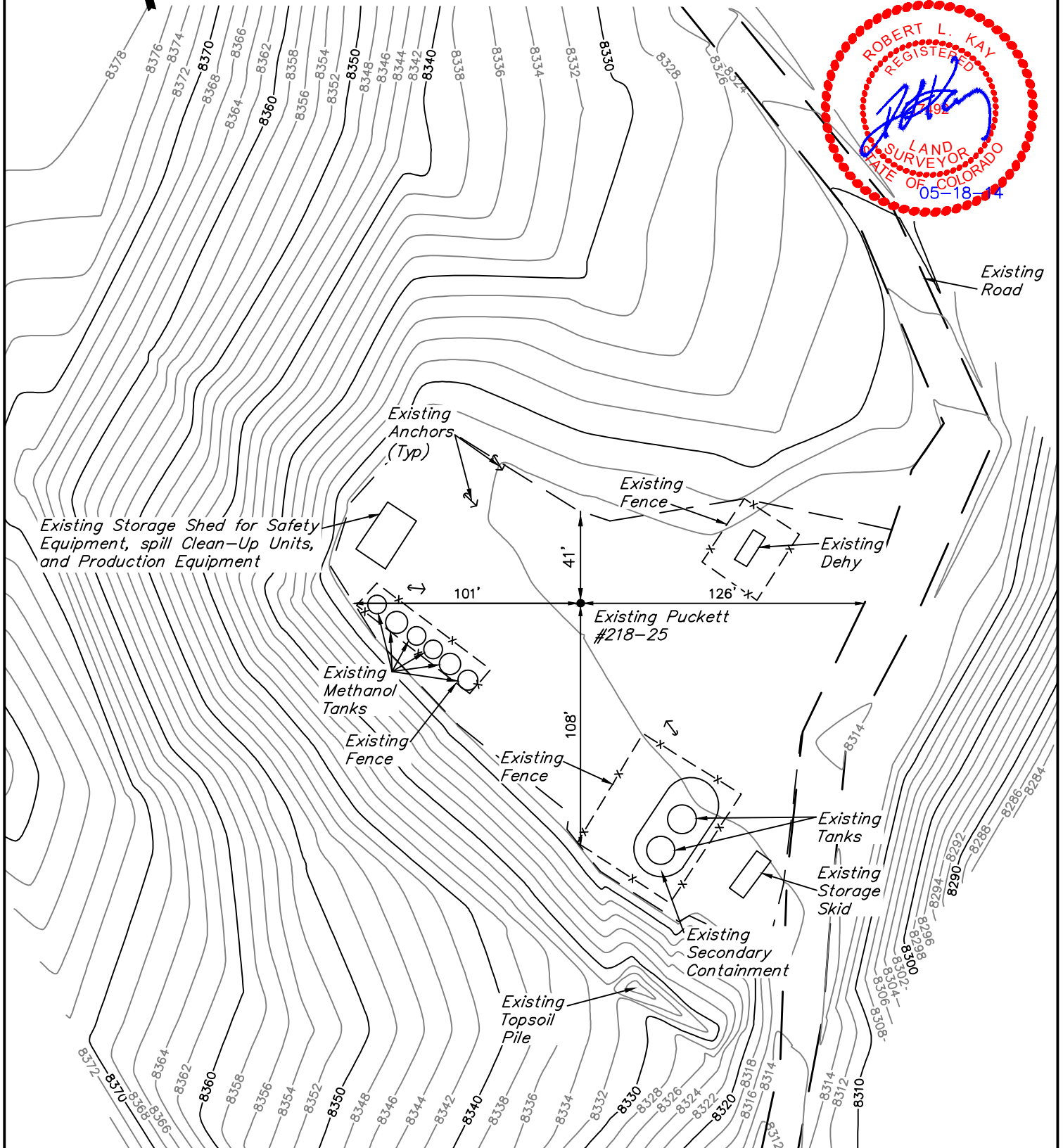
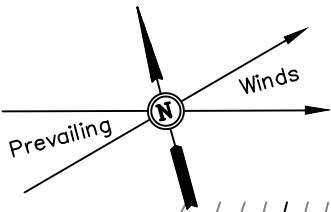
DATE: 05-20-13

DRAWN BY: J.G.G.

REV: 05-30-13

REV: 05-31-13

REV: 05-18-14 M.D.



UINTAH ENGINEERING & LAND SURVEYING

85 So. 200 East * Vernal, Utah 84078 * (435) 789-1017

Caerus Oil & Gas LLC
PUCKETT #218-25
SECTION 25, T6S, R97W, 6th P.M.
DATE: 05-19-2014

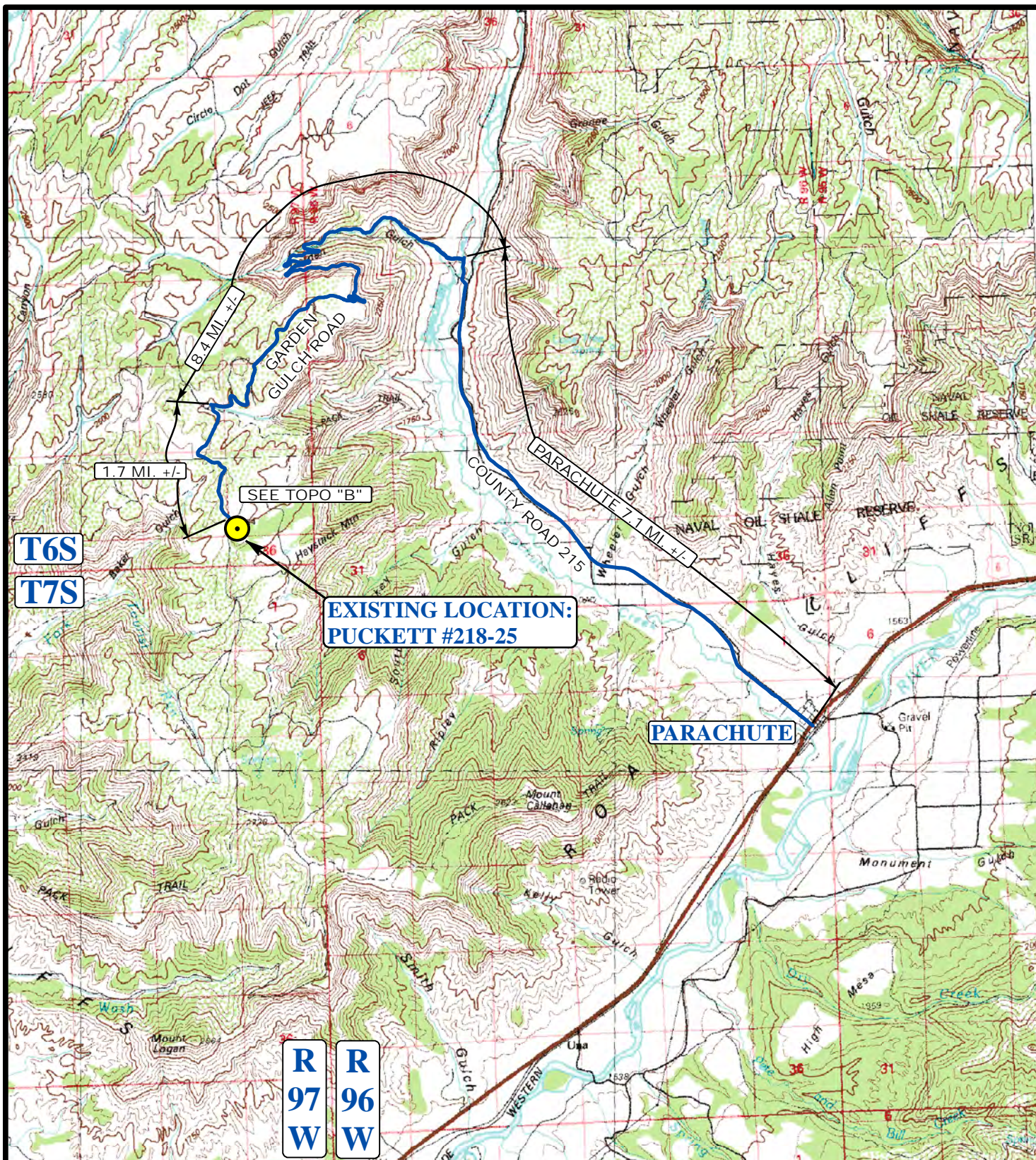
DISTANCES FROM WELL HEAD																
WELL NAME	BUILDING		BUILDING UNIT		HIGH OCCU. BUILDING		DOAA		PUBLIC ROAD		ABOVE GROUND UTILITY		RAILROAD		PROPERTY LINE	
	DIRECTION	LENGTH	DIRECTION	LENGTH	DIRECTION	LENGTH	DIRECTION	LENGTH	DIRECTION	LENGTH	DIRECTION	LENGTH	DIRECTION	LENGTH	DIRECTION	LENGTH
#218-25	OVER 1 MILE		OVER 1 MILE		OVER 1 MILE		OVER 1 MILE		S45°E	114'	OVER 1 MILE		OVER 1 MILE		EAST	4650'

DISTANCES FROM PRODUCTION EQUIPMENT																
PRODUCTION FEATURE	BUILDING		BUILDING UNIT		HIGH OCCU. BUILDING		DOAA		PUBLIC ROAD		ABOVE GROUND UTILITY		RAILROAD		PROPERTY LINE	
	DIRECTION	LENGTH	DIRECTION	LENGTH	DIRECTION	LENGTH	DIRECTION	LENGTH	DIRECTION	LENGTH	DIRECTION	LENGTH	DIRECTION	LENGTH	DIRECTION	LENGTH
PRODUCTION EQUIPMENT	OVER 1 MILE		OVER 1 MILE		OVER 1 MILE		OVER 1 MILE		S56°E	38'	OVER 1 MILE		OVER 1 MILE		EAST	4508'

Caerus Oil & Gas LLC
PUCKETT #218-25
SECTION 25, T6S, R97W, 6th P.M.

PROCEED IN A NORTHWESTERLY DIRECTION FROM PARACHUTE, COLORADO ALONG COUNTY ROAD 215 APPROXIMATELY 7.1 MILES TO THE JUNCTION OF THIS ROAD AND GARDEN GULCH ROAD TO THE NORTHWEST; TURN LEFT AND PROCEED IN A NORTHWESTERLY, THEN SOUTHWESTERLY, THEN NORTHEASTERLY, THEN NORTHEASTERLY, THEN SOUTHWESTERLY THEN NORTHWESTERLY, THEN SOUTHWESTERLY DIRECTION APPROXIMATELY 8.4 MILES TO THE JUNCTION OF THIS ROAD AND AN EXISTING ROAD TO THE SOUTHEAST; TURN LEFT AND PROCEED IN A SOUTHEASTERLY, THEN SOUTHWESTERLY, THEN SOUTHEASTERLY DIRECTION APPROXIMATELY 1.7 MILES TO THE JUNCTION OF THIS ROAD AND AN EXISTING ROAD TO THE NORTHEAST; TURN LEFT AND PROCEED IN A NORTHEASTERLY, THEN SOUTHEASTERLY, THEN SOUTHWESTERLY DIRECTION APPROXIMATELY 0.2 MILES TO THE EXISTING LOCATION.

TOTAL DISTANCE FROM PARACHUTE, COLORADO TO THE EXISTING WELL LOCATION IS APPROXIMATELY 17.4 MILES.



LEGEND:

● EXISTING LOCATION

Caerus Oil & Gas LLC

PUCKETT #218-25
SECTION 25, T6S, R97W, 6th P.M.
SW 1/4 SW 1/4



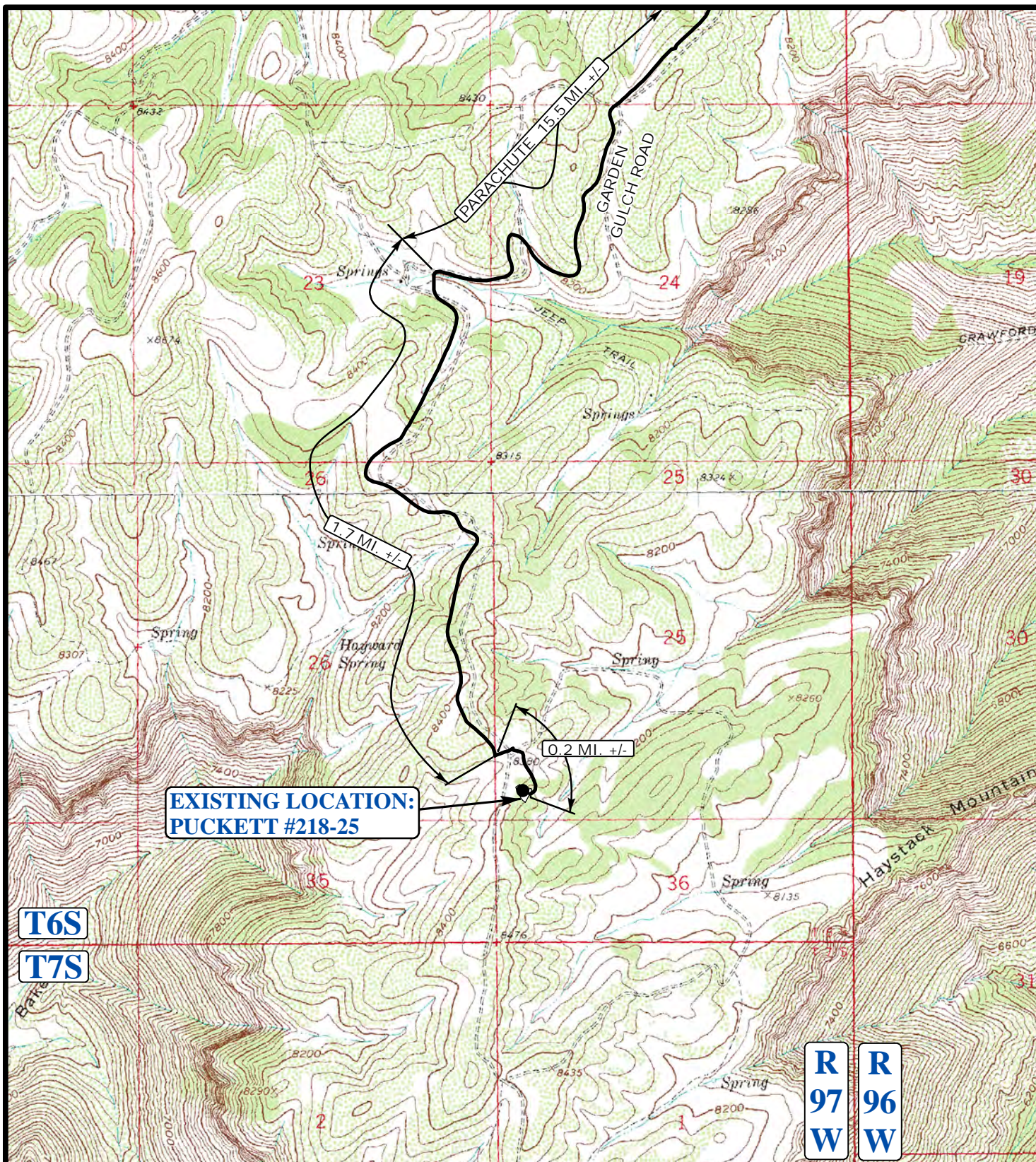
Uintah Engineering & Land Surveying
 85 South 200 East Vernal, Utah 84078
 (435) 789-1017 * FAX (435) 789-1813

ACCESS ROAD
MAP

05 **24** **13**
 MONTH DAY YEAR

SCALE: 1:100,000 DRAWN BY: A.T. REV: 05-17-14 J.M.F.





LEGEND:

————— EXISTING ROADS



Caerus Oil & Gas LLC

PUCKETT #218-25
SECTION 25, T6S, R97W, 6th P.M.
SW 1/4 SW 1/4



Uintah Engineering & Land Surveying
 85 South 200 East Vernal, Utah 84078
 (435) 789-1017 * FAX (435) 789-1813

ACCESS ROAD MAP	05	24	13	B TOPO
	MONTH	DAY	YEAR	
SCALE: 1" = 2000'	DRAWN BY: A.T.		REV: 05-17-14 J.M.F.	

