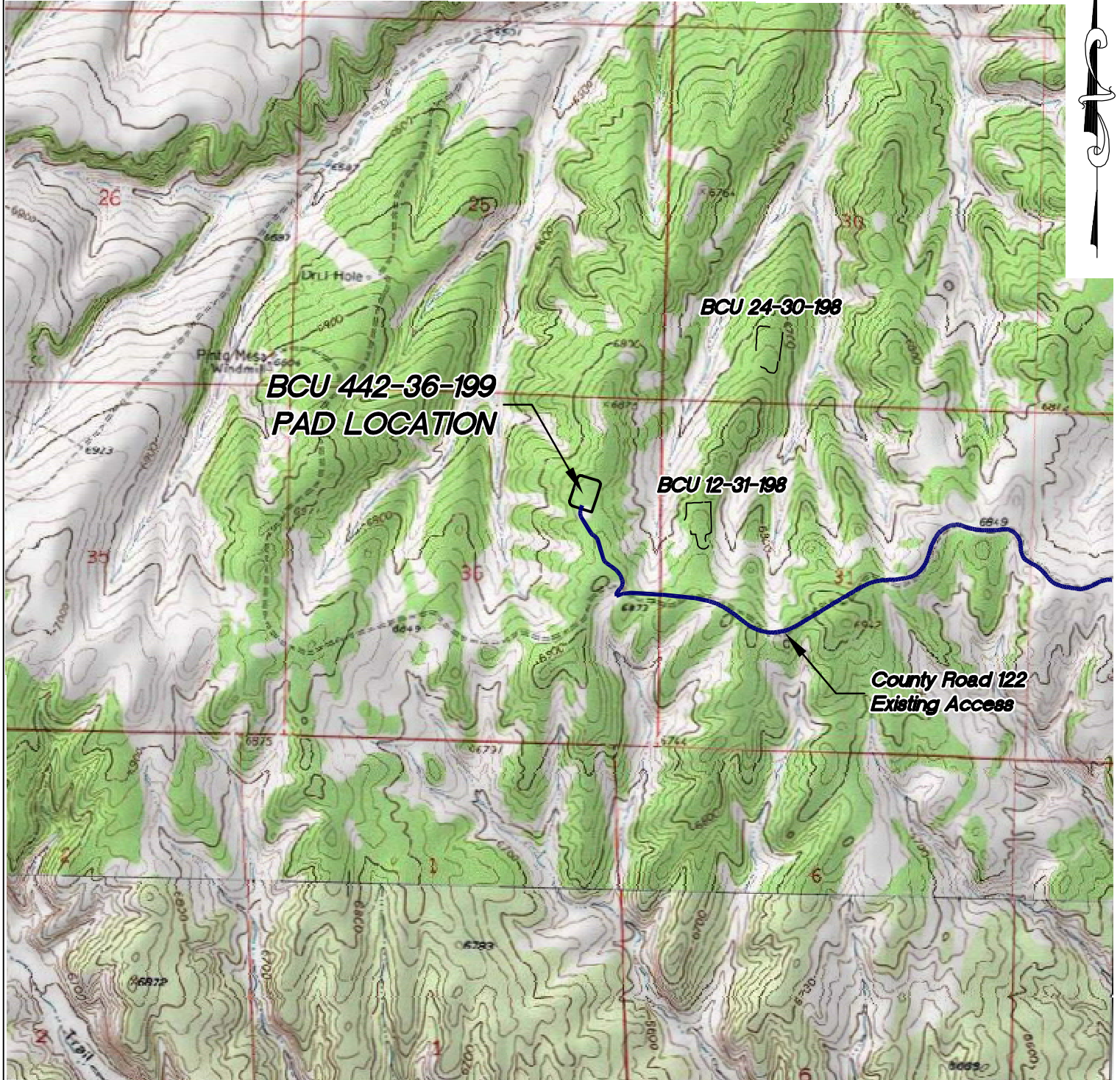


Section 36
 T. 1 N., R 99 W
 6th. P.M.



ACCESS DESCRIPTION:
 FROM THE INTERSECTION OF STATE HIGHWAY 64 AND RIO BLANCO COUNTY ROAD 5 PROCEED SOUTHERLY ALONG COUNTY ROAD 5 ±4.6 MILES TO THE INTERSECTION WITH A DIRT/GRAVEL ROAD BEING COUNTY ROAD 20 , PROCEED RIGHT IN A WESTERLY DIRECTION ALONG COUNTY ROAD 20 ±4.9 MILES TO THE INTERSECTION WITH A DIRT/GRAVEL ROAD BEING COUNTY ROAD 122, PROCEED RIGHT IN A WESTERLY TO SOUTHWESTERLY DIRECTION ±7.3 MILES TO AN INTERSECTION WITH A DIRT/GRAVEL ROAD, PROCEED RIGHT IN A NORTHERLY DIRECTION ±0.3 MILES TO THE BCU 442-36-199 DRILL PAD LOCATION, AS SHOWN HEREON.

136 East Third Street
 Rifle, Colorado 81650
 Ph. (970) 625-2720
 Fax (970) 625-2773



SCALE: 1" = 2000'
 DATE: 4/9/12
 PLAT: 5 of 7
 PROJECT: Highlands
 DFT: cws

Construction Plan Prepared for:
WPX ENERGY WPX Energy Rocky Mountain, LLC

BCU 442-36-199 Drill Pad - Sheet 5
 ACCESS & TOPOGRAPHY MAP

K:\2010 HIGHLANDS CENTRAL\BCU 42-36-199\BCU 42-36-199.dwg, 4/9/2012 7:33:19 AM