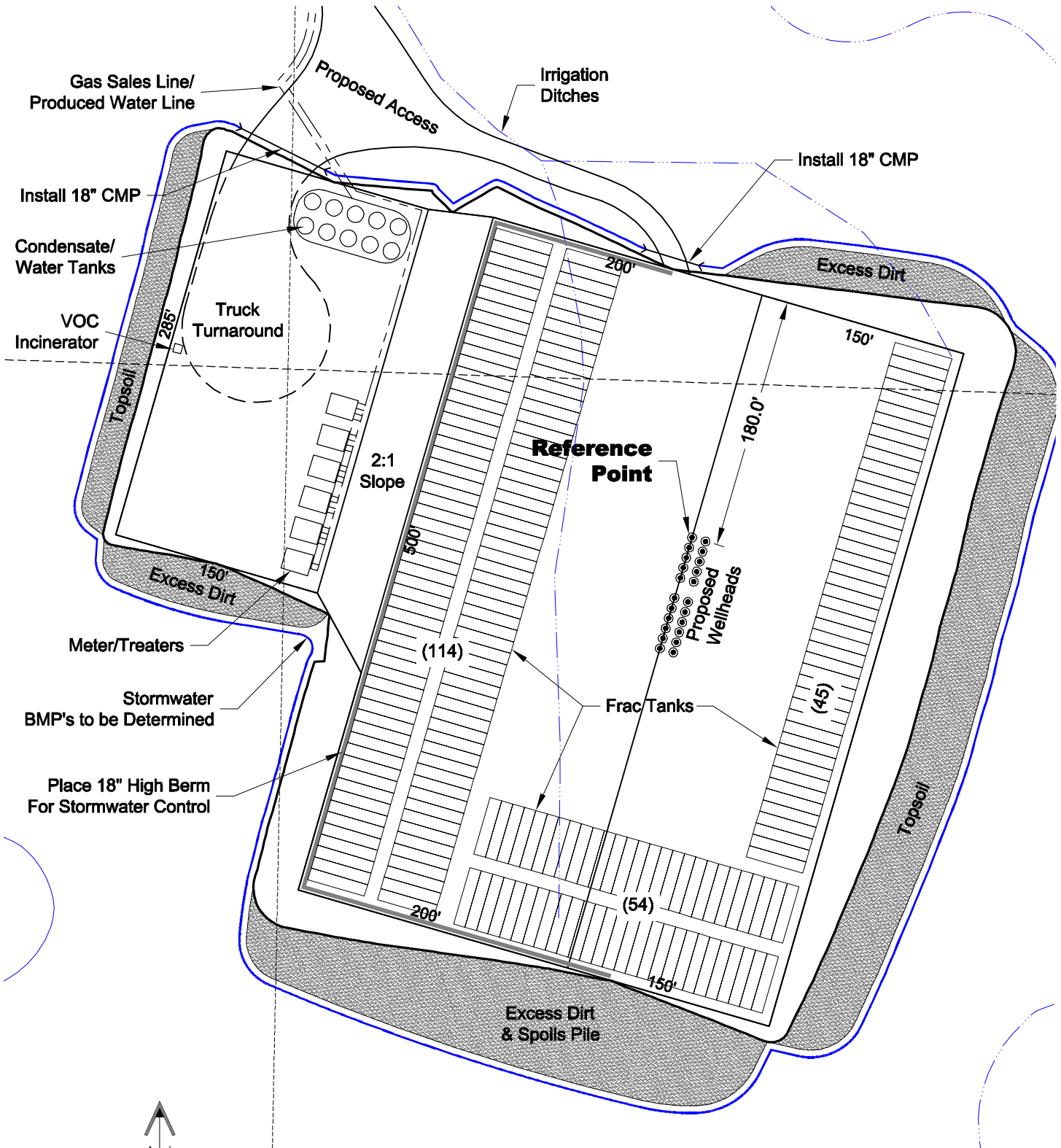
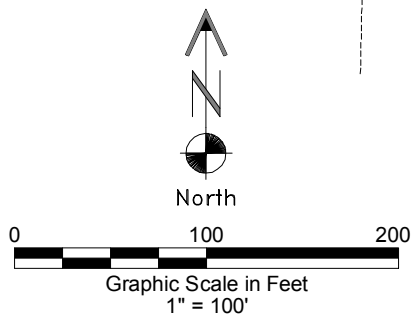


TEMPORARY WATER STORAGE FACILITY AND COMPLETION SUPPORT EQUIPMENT SITE



5/5/14



GEO SURV

LAND SURVEYING AND MAPPING
LAFAYETTE - WINTER PARK
Ph 303 666 0379 Fx 303 665 6320

**PICEANCE ENERGY, LLC
PICEANCE 28-11 PAD**

**NE1/4 SW1/4 SECTION 28 T9S R93W
6th PM MESA COUNTY COLORADO**