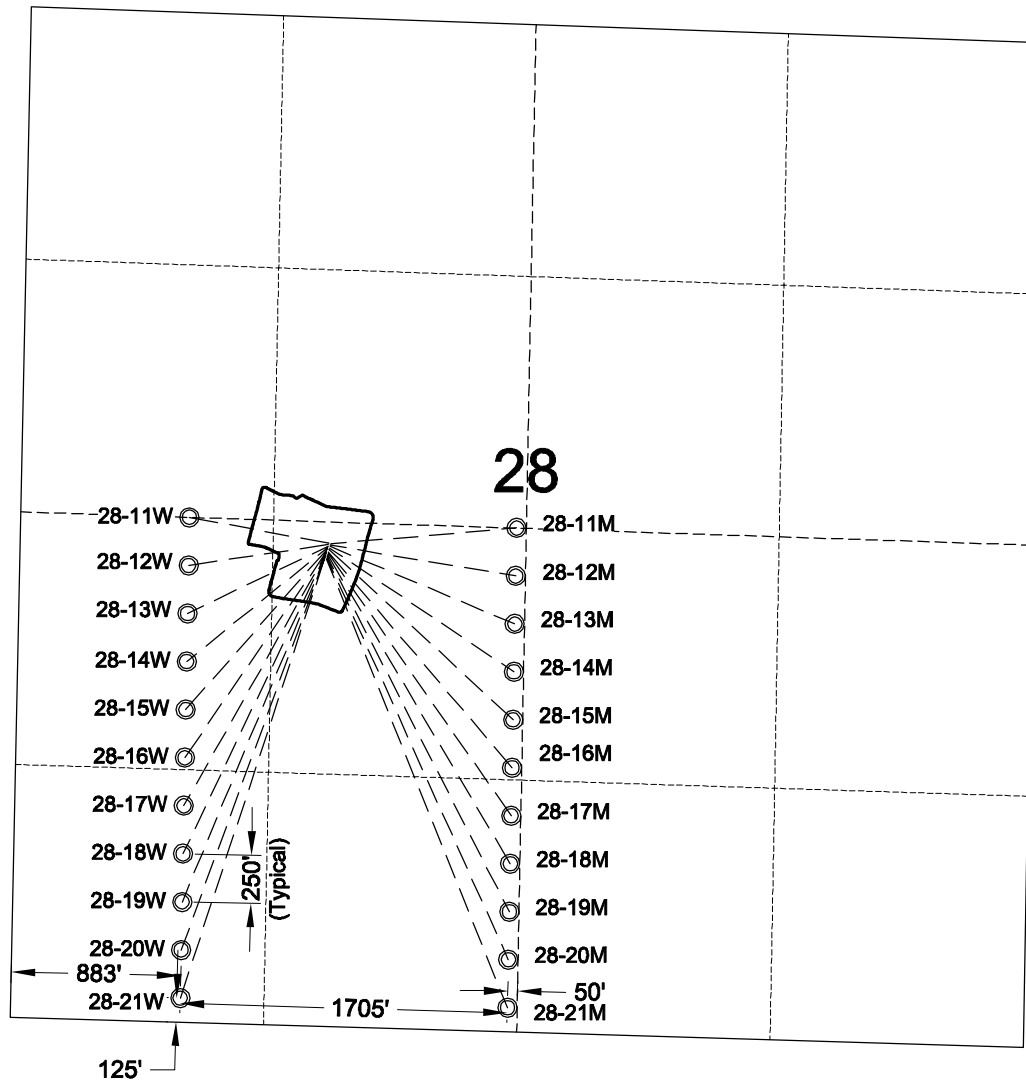
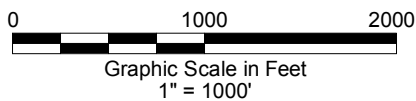
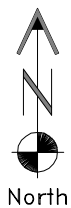


# MULTI-WELL PLAN



© PROPOSED BOTTOM HOLE LOCATION

5/2/14



**GEO SURV**

LAND SURVEYING AND MAPPING  
LAFAYETTE - WINTER PARK  
Ph 303 666 0379 Fx 303 665 6320

**PICEANCE ENERGY, LLC**  
**PICEANCE 28-11 PAD**

**NE1/4 SW1/4 SECTION 28 T9S R93W**  
**6th PM MESA COUNTY COLORADO**