



Pioneer Energy Services

Sector Bond, V.D.L.
Gamma-Ray, C.C.L. Log

Company Anadarko Petroleum Corp.

Well Brotmarkle 29N-13HZ

Field Wattenberg

County	Weld	State	Colorado
--------	------	-------	----------

Location:

API #: 051233652000000

292' FSL & 1451' FWL

SEC 13 TWP 3N RGE 66W

Permanent Datum	GL	Elevation	5024
Log Measured From	KB		
Drilling Measured From	KB		

Elevation

Company	Anadarko Petroleum Corp.
Well	Brotemarkle 29N-13HZ
Field	Wattenberg
County	Weld
State	Colorado

Date	4-9-14
------	--------

Depth Driller	11783"
---------------	--------

Bottom Loaded Interval	6710'
------------------------	-------

Open Hole Size	8.75"
----------------	-------

Density / Viscosity	NA
---------------------	----

Estimated Cement Top	72'
----------------------	-----

time adder on Bottom	AM
little well ready	NOA

Location	FORT MOR
----------	----------

Witnessed By	Mr. Rick Du
--------------	-------------

Run Number	Bit	From	To
------------	-----	------	----

Surface String	9 5/8"	
----------------	--------	--

Production String	7"	
-------------------	----	--

[illegible]

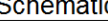
Comments

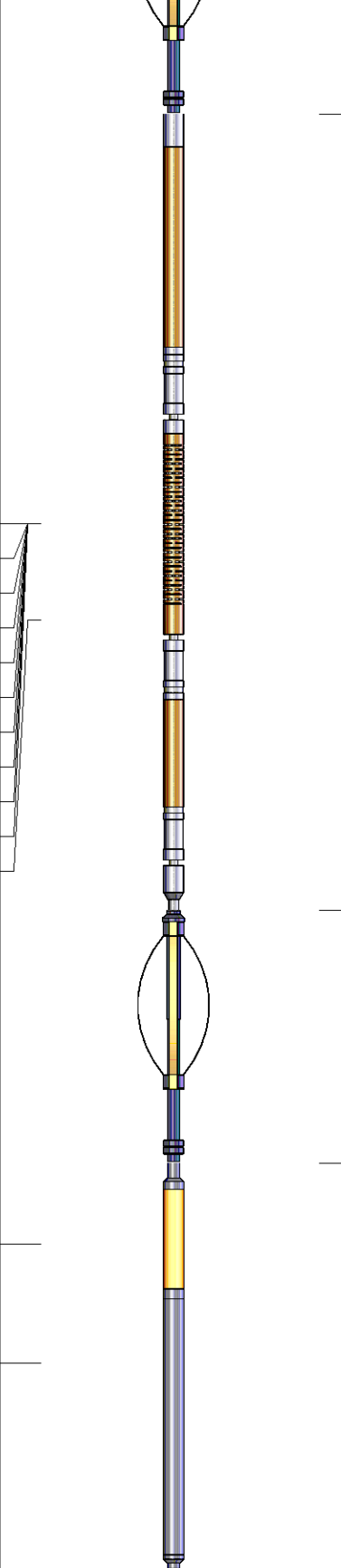
S.O. # 2-260018

CORRECTED TO LINER TOP AT 6641'

W O N X E
S

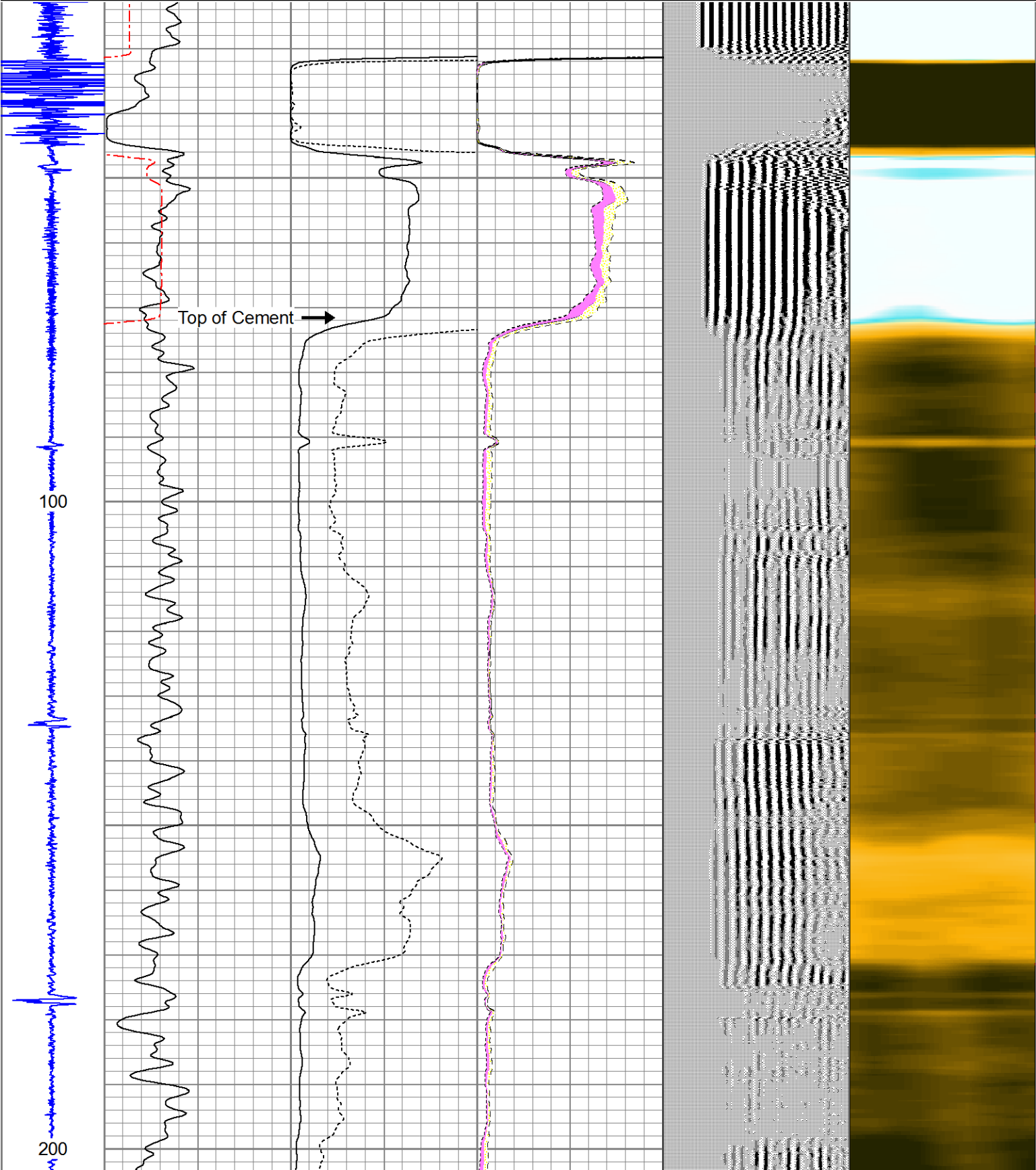
WCR 32 & WCR 35, E 1 MILE, N 1/10, NW 2/10, SW 1/10, S 400' INTO
THANK YOU FOR USING PIONEER ENERGY SERVICES

Sensor	Offset (ft)	Schematic	Description	Len (ft)	OD (in)	Wt (lb)
			PTS275	2.83	2.75	

WVF3FT	11.71		RBT-Probe (Base) Probe Radii Bond Tool with Digital Telemetry	8.92	2.75	90.00
WVFCAL	11.71					
WVFS1	11.71					
WVFS2	11.71					
WVFS3	11.71					
WVFS4	11.71					
WVFS5	11.71					
WVFS6	11.71					
WVFS7	11.71					
WVFS8	11.71					
WVF5FT	10.63					
			PTS275	2.83	2.75	
CCL	3.63					
GR	2.30		GR_CCL-Probe (111211) Probe Gamma CCL	4.54	2.75	100.00
Dataset: brotemarkle_29n_13hz_rbl_05123365200000.db: field/well/run1/pass5 Total Length: 19.13 ft Total Weight: 190.00 lb O.D. 2.75 in						

Database File: brotemarkle_29n_13hz_rbl_05123365200000.db
Dataset Pathname: pass5
Presentation Format: scbl02
Dataset Creation: Wed Apr 09 08:12:45 2014 by Log 7.0 B1
Charted by: Depth in Feet scaled 1:240

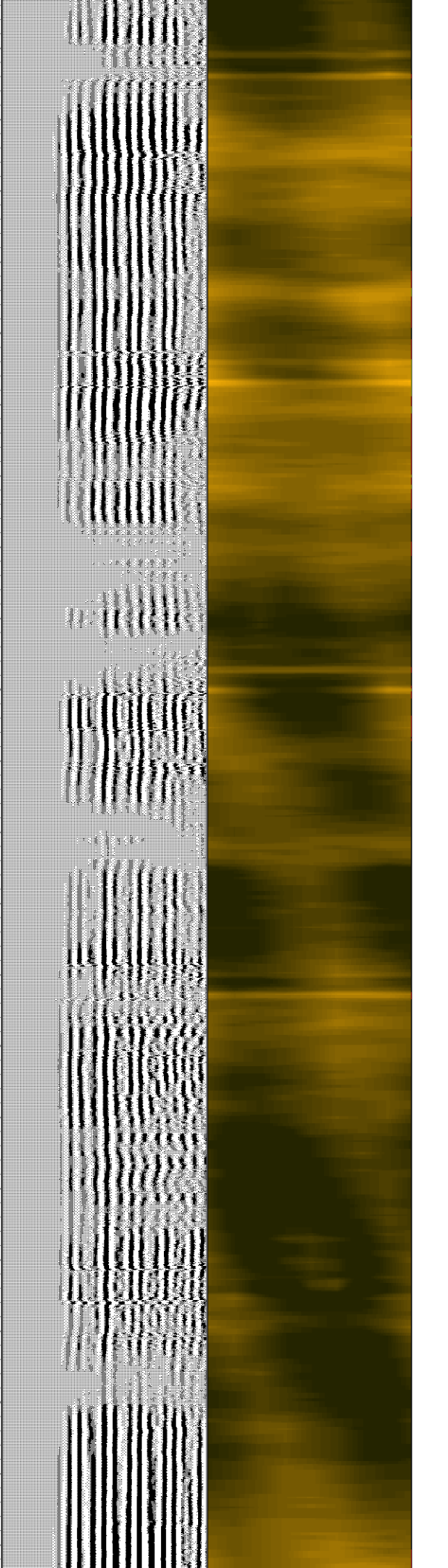
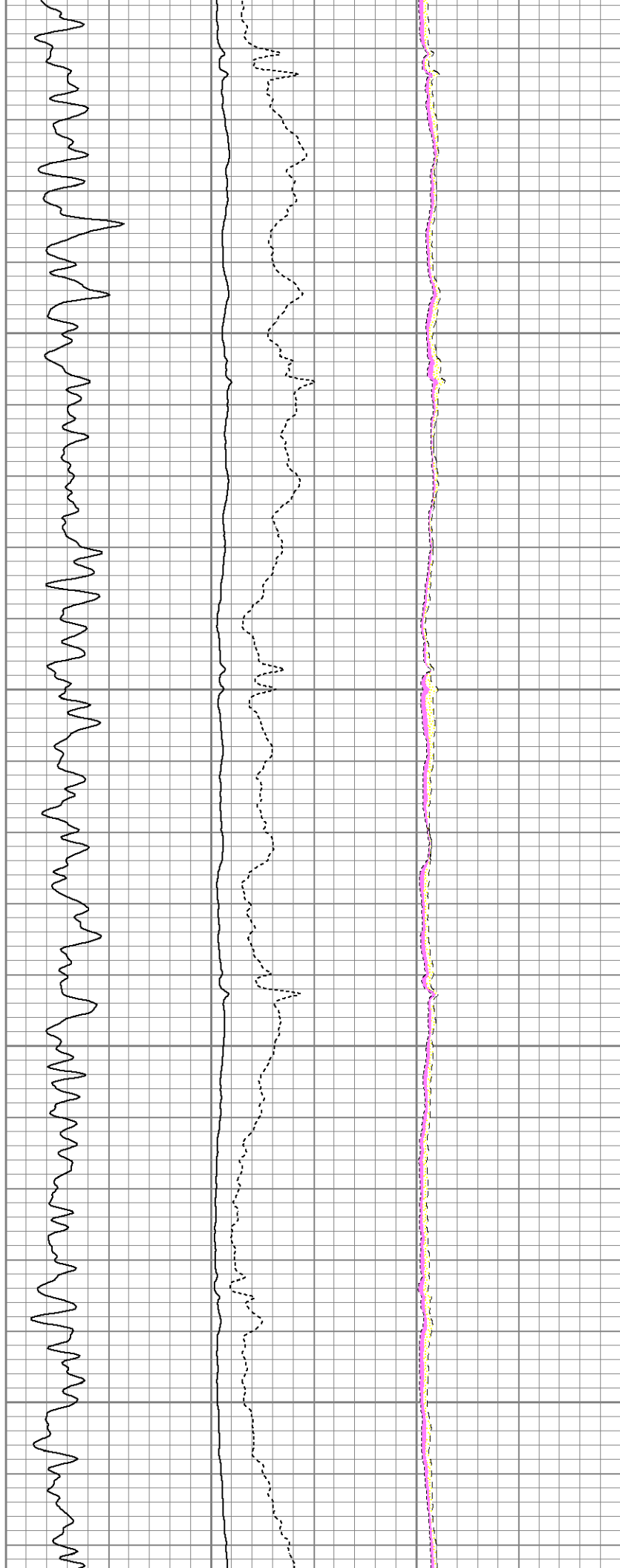
-5	CCL	5	0	GR (GAPI)	200	0	AMP (mV)	100	0	AMPAVG	150	200	VDL	1200	1	SECTOR MAP	8
				TT3FT		0	AMPx5 (mV)	20	0	AMPMAX	150				5		100
				326 (usec)	226				0	AMPMIN	150						





300

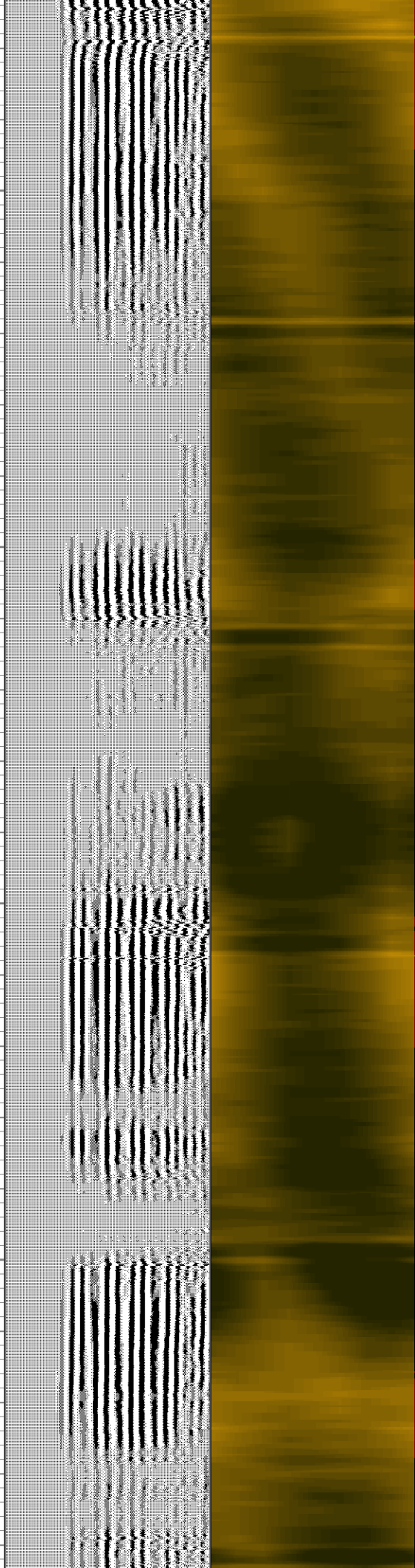
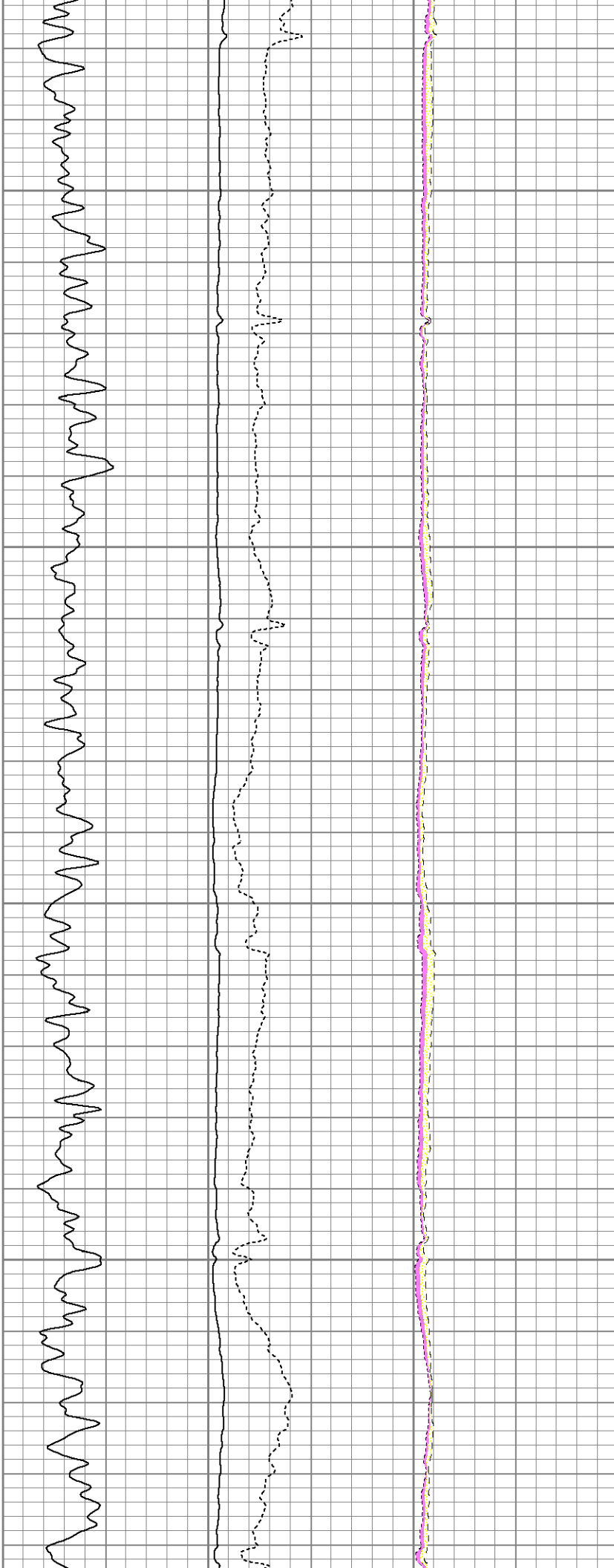
400





500

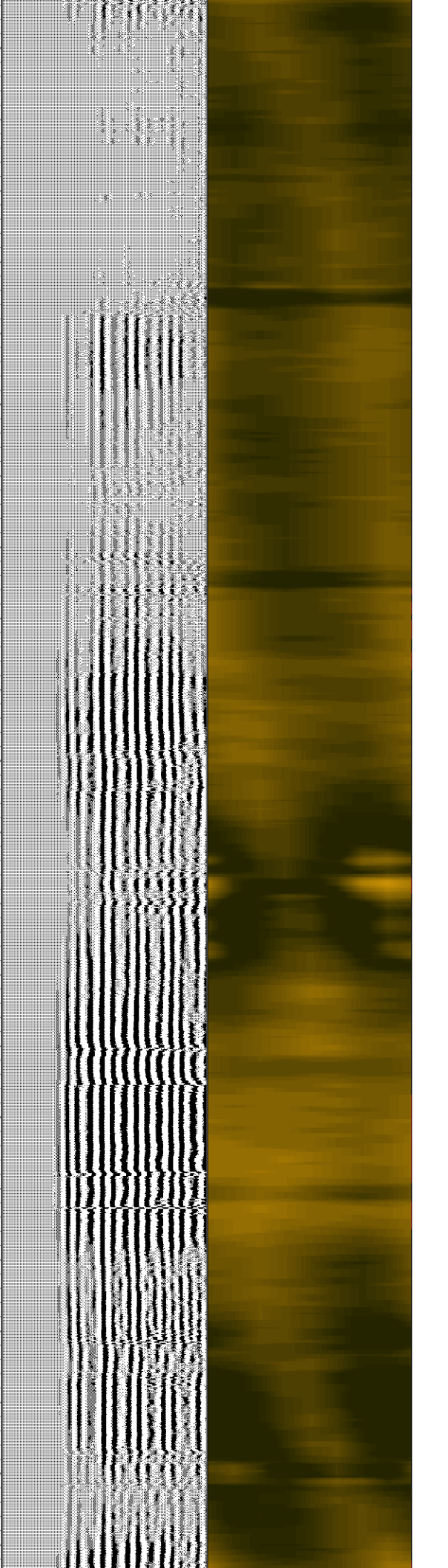
600





700

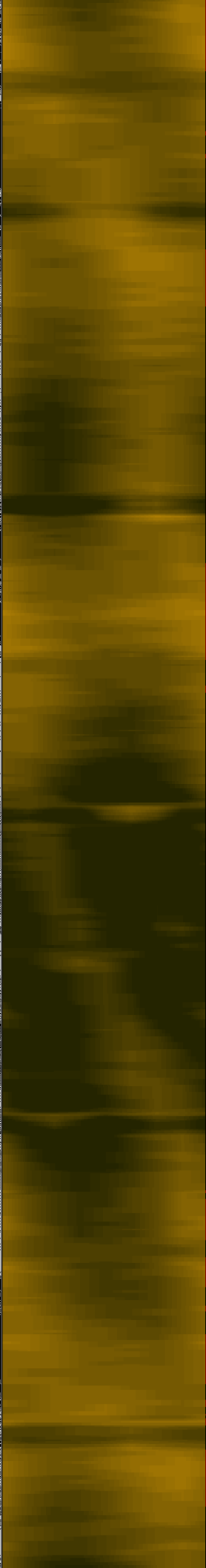
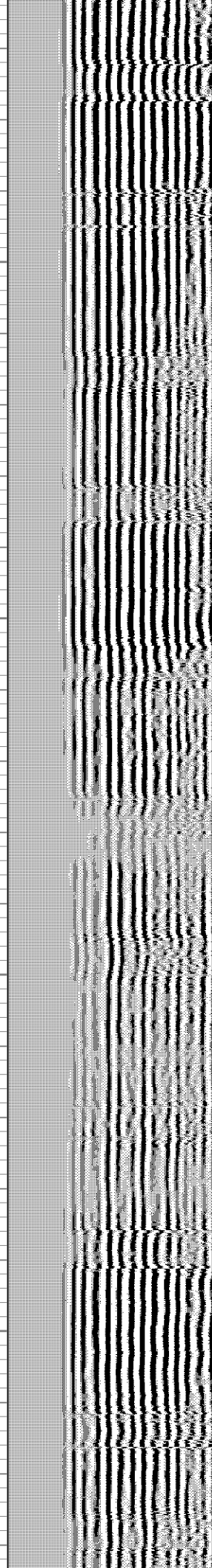
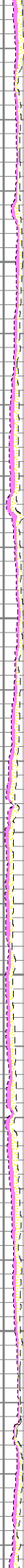
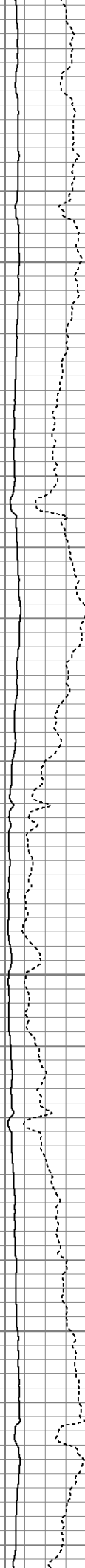
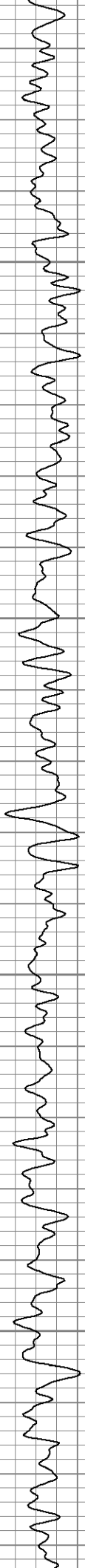
800

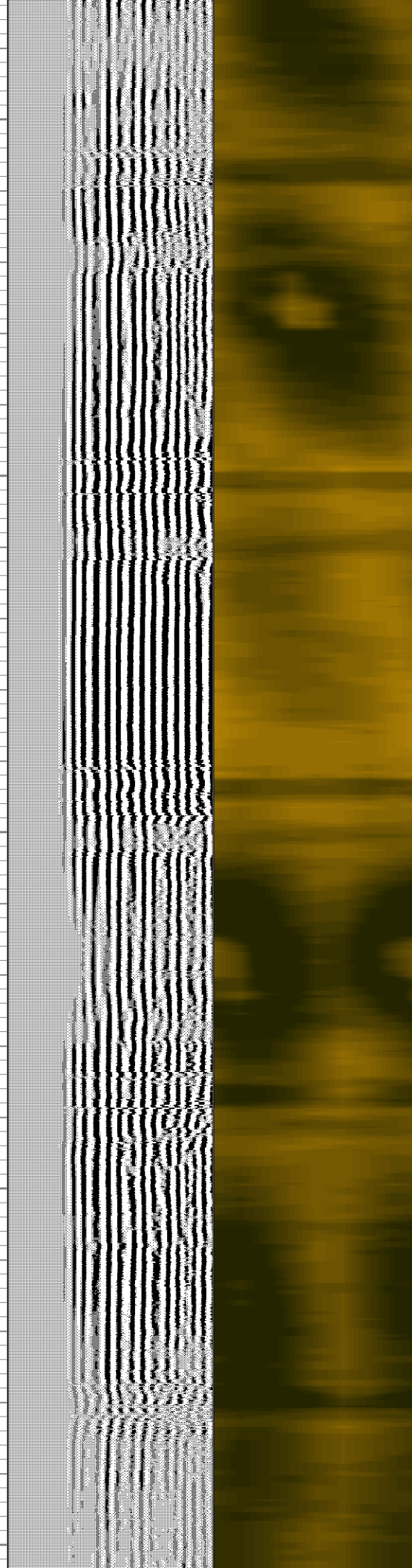
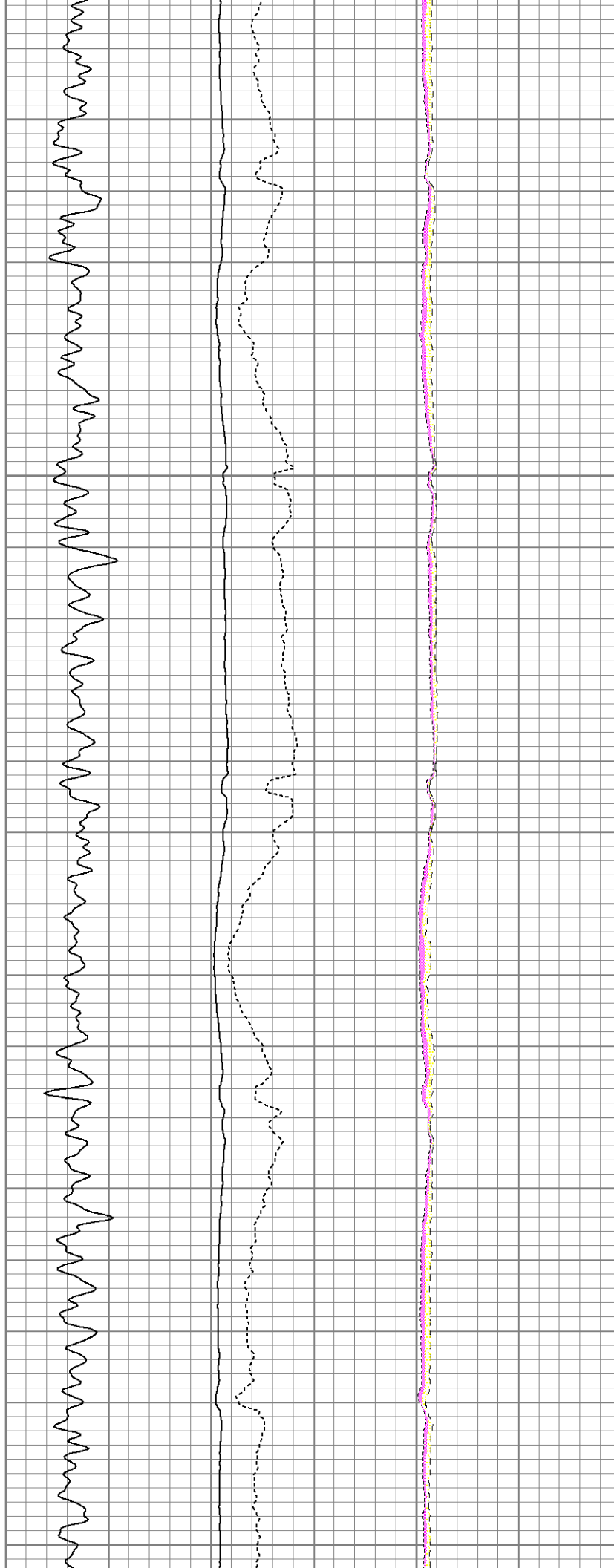
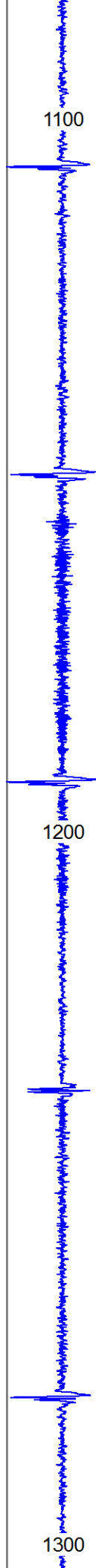


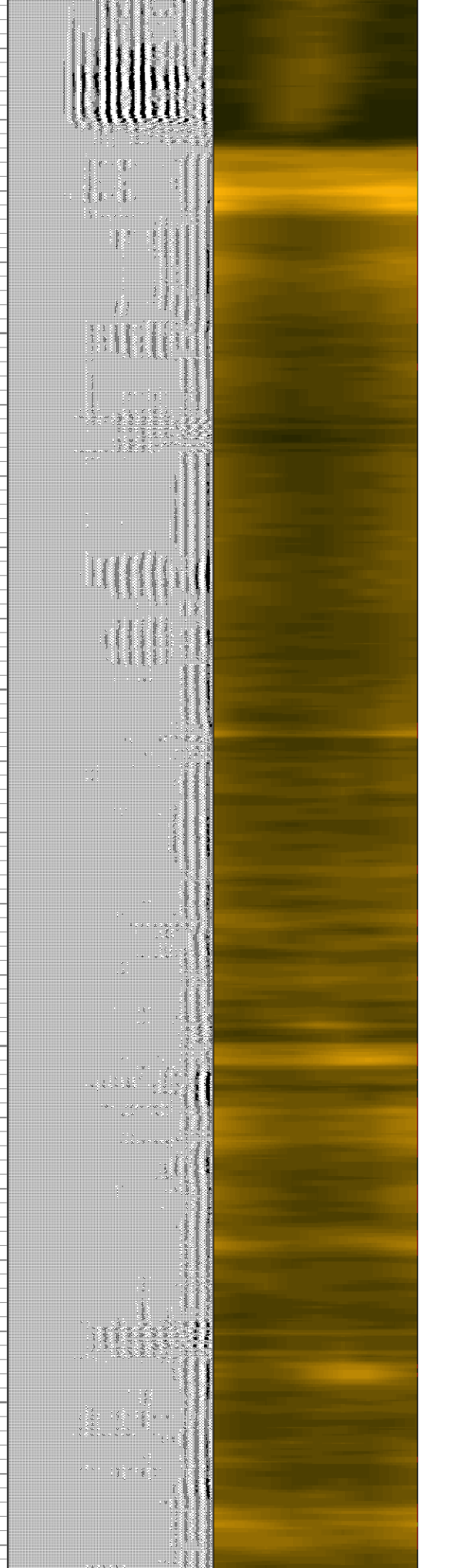
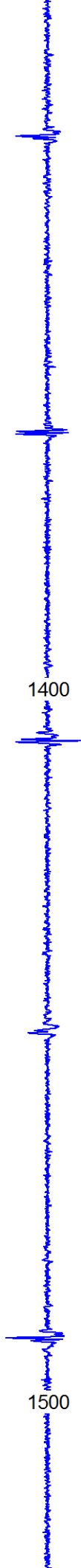


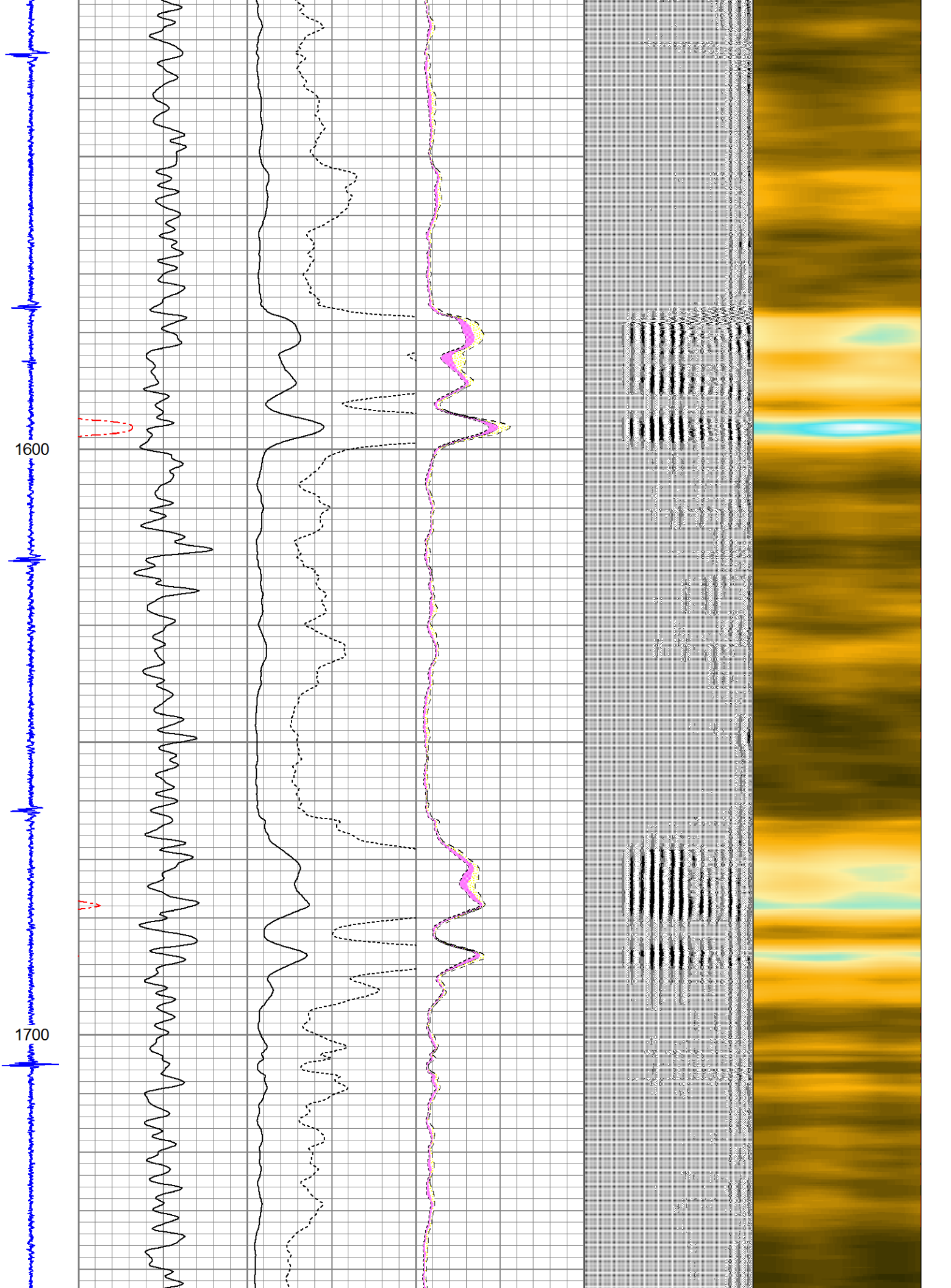
900

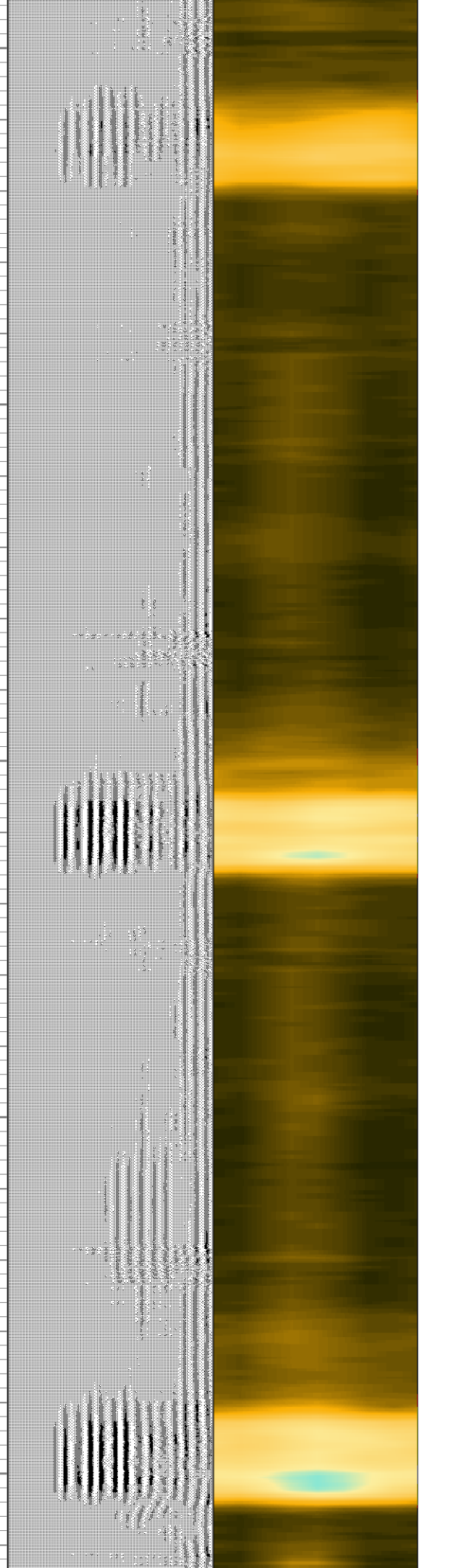
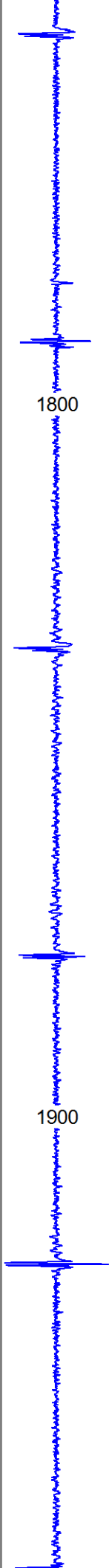
1000

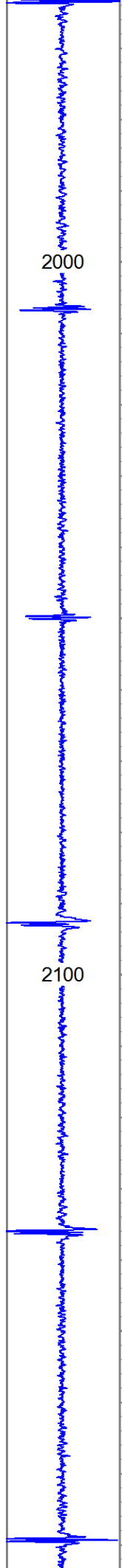






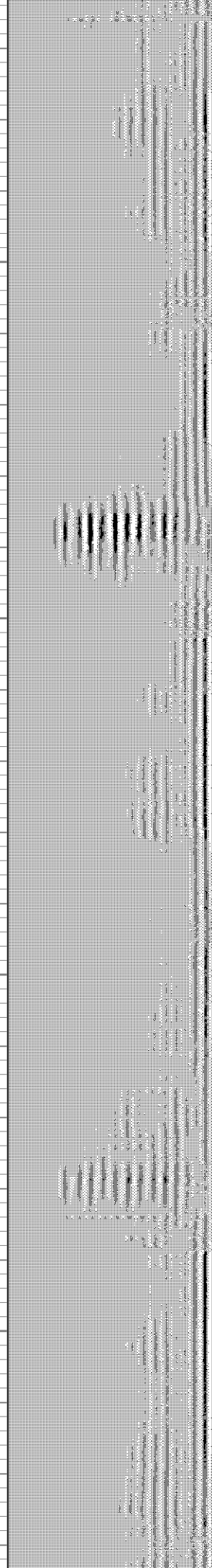
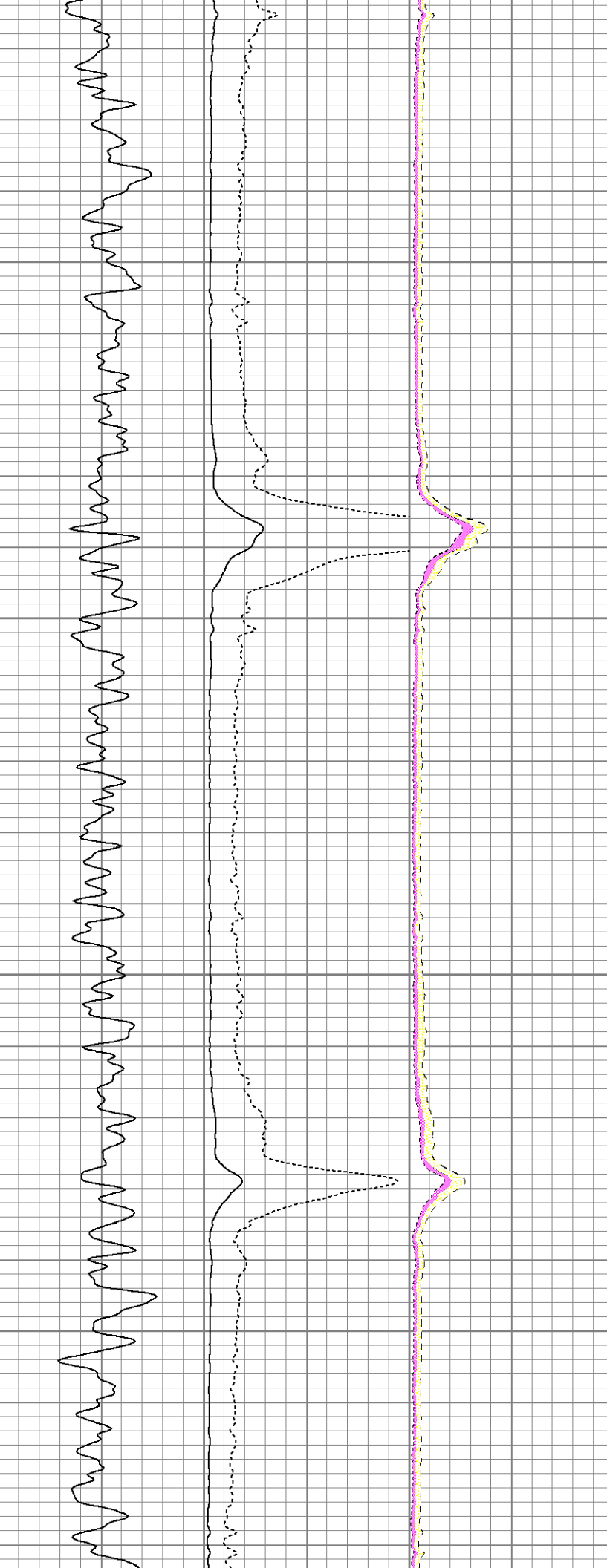


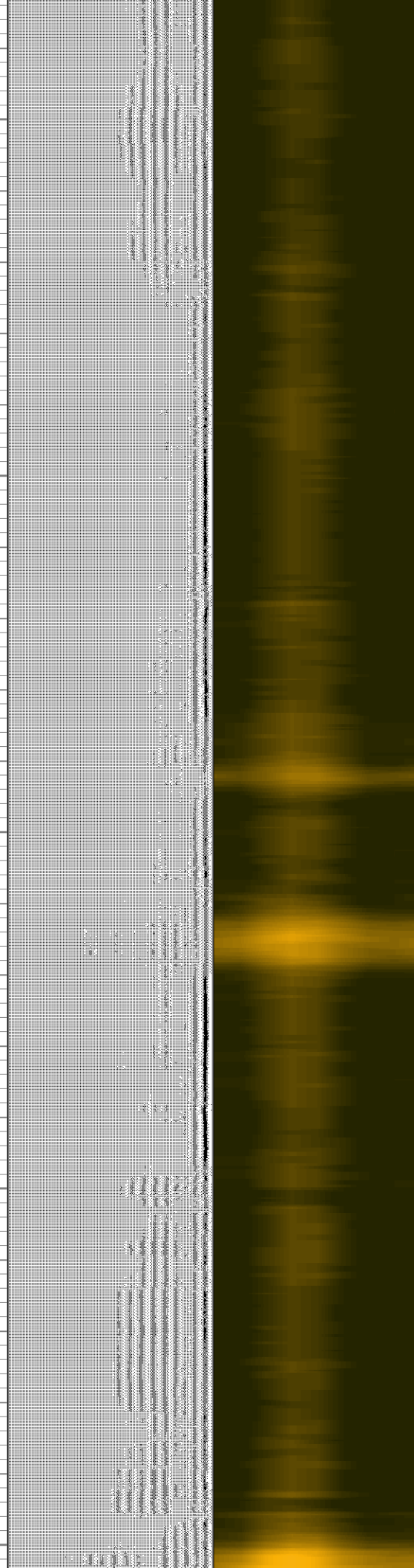
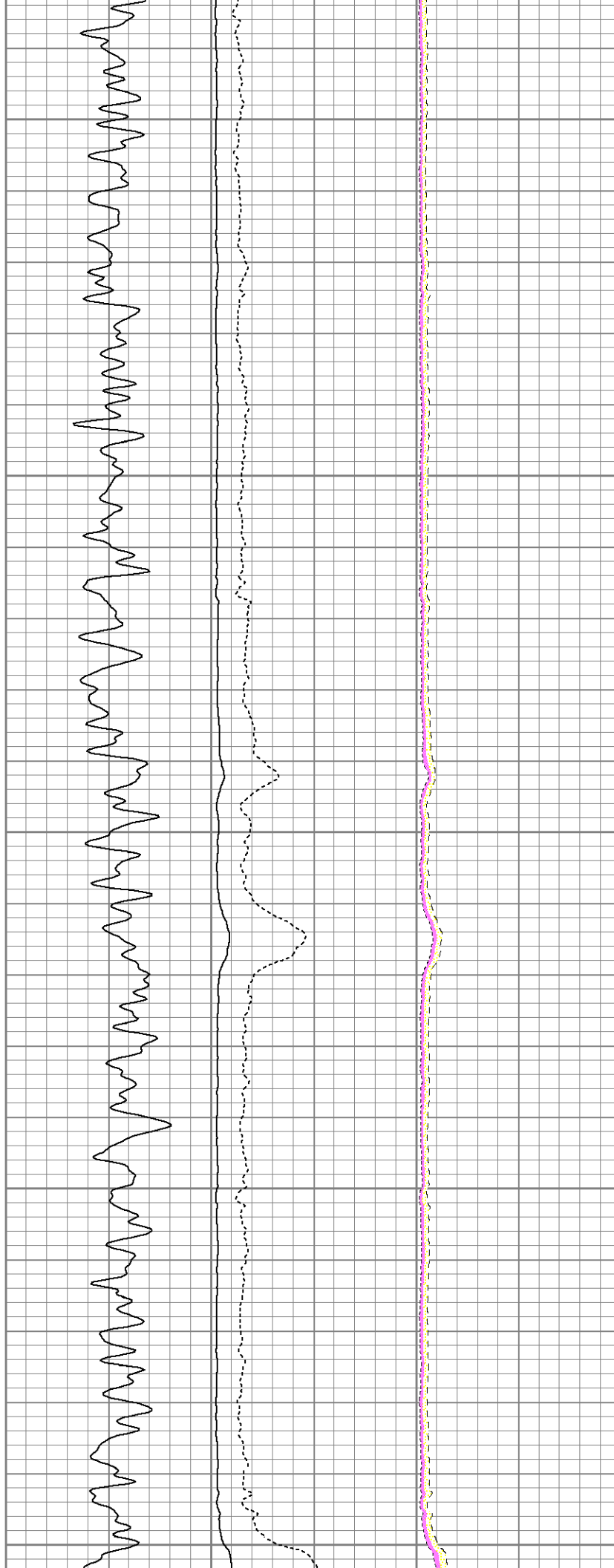
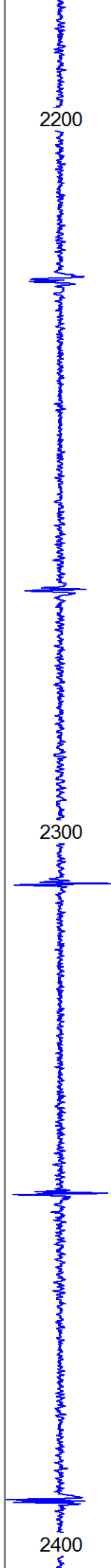


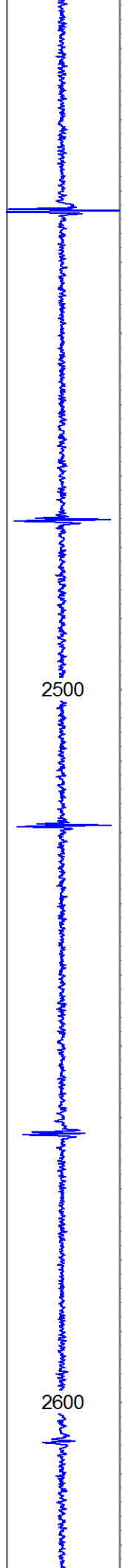


2000

2100

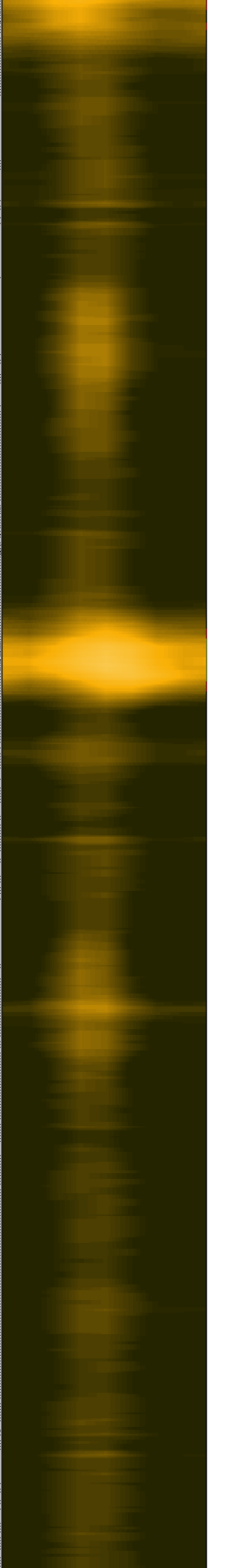
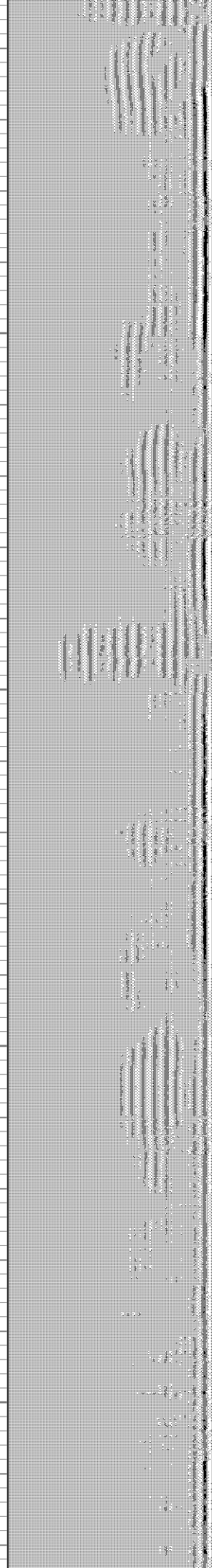


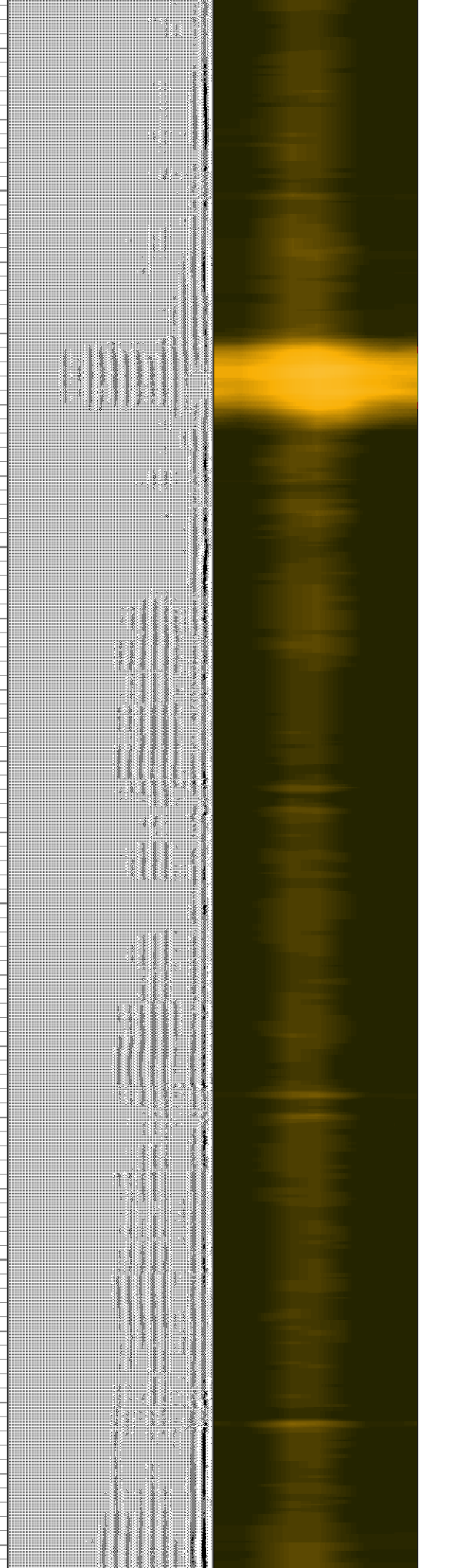
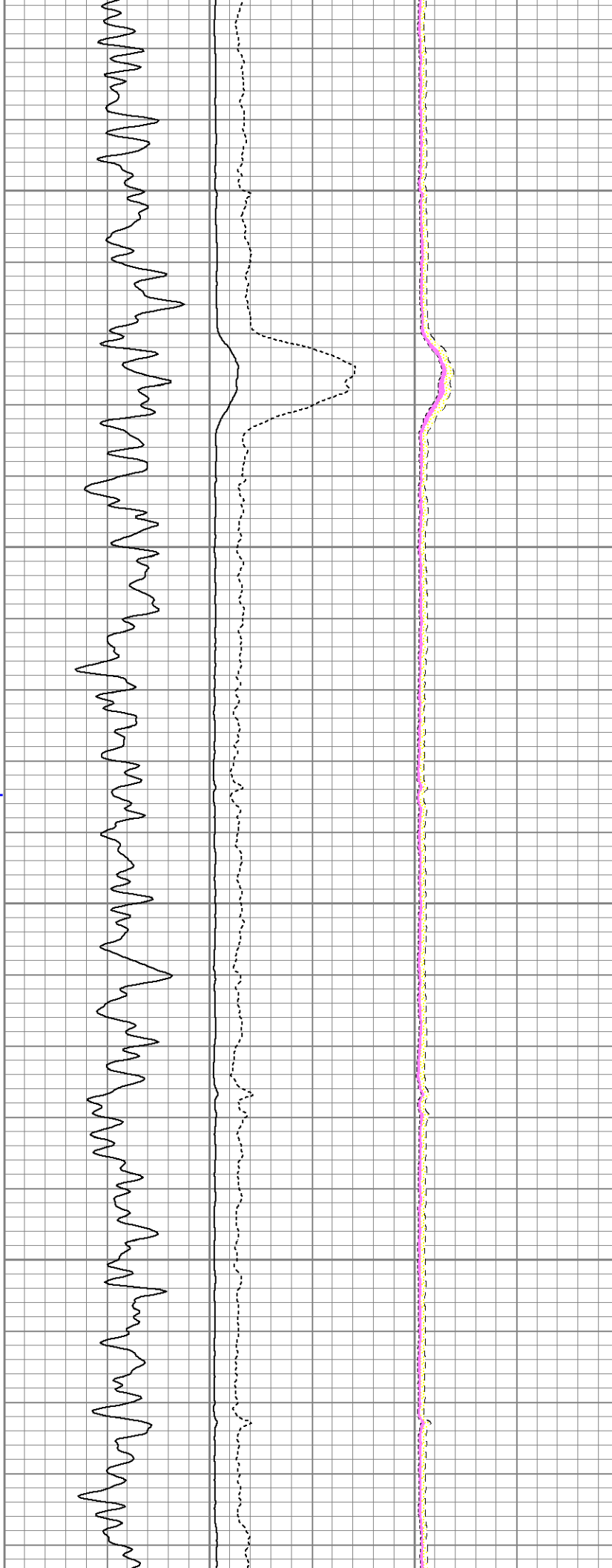
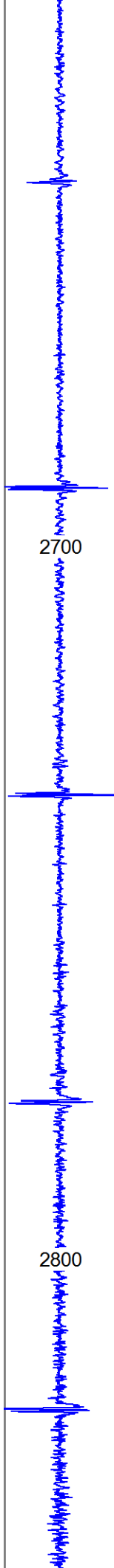


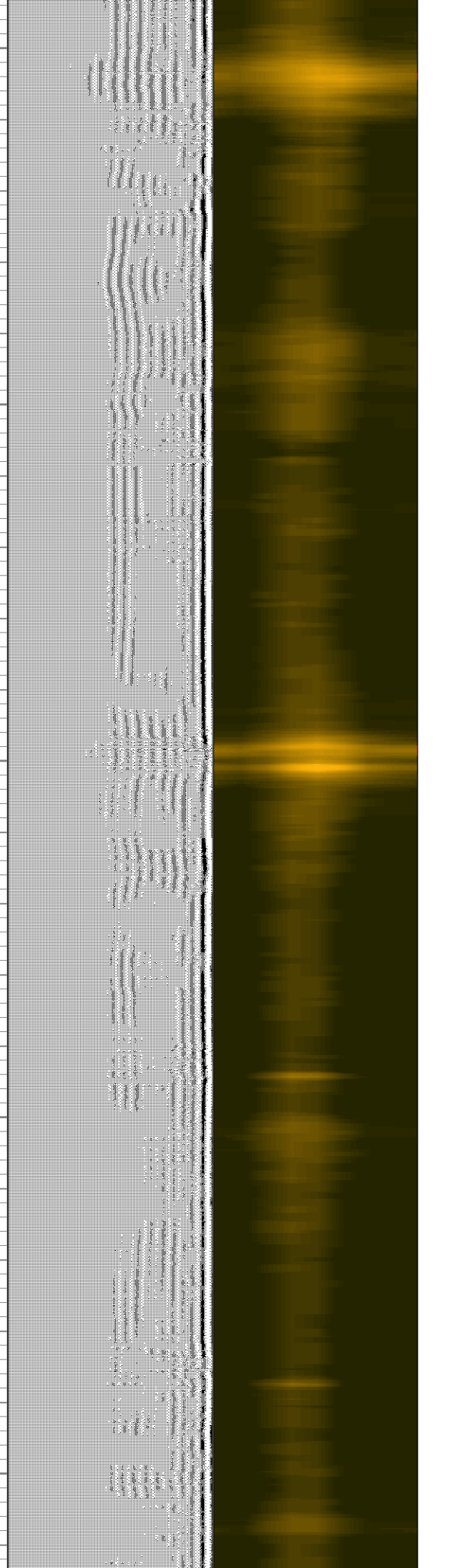
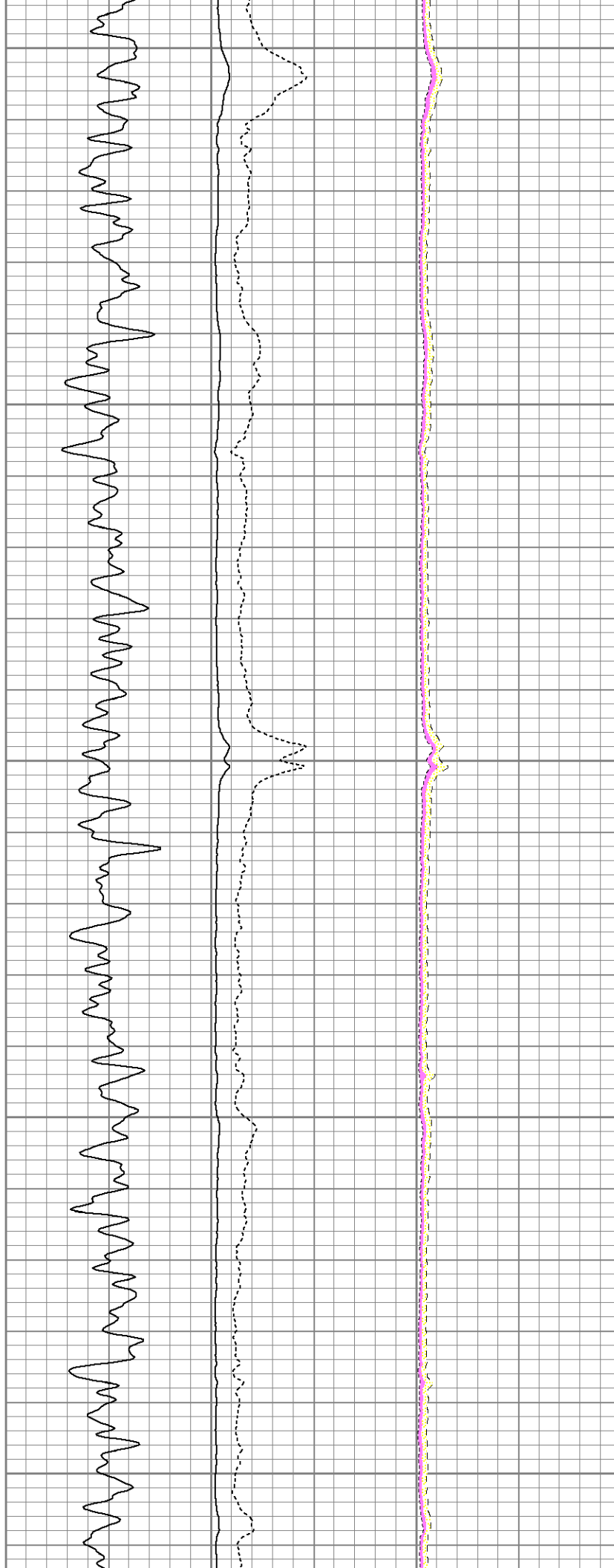
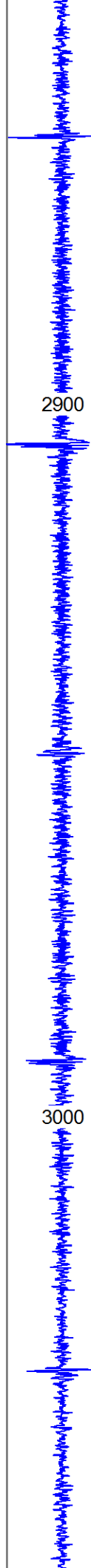


2500

2600

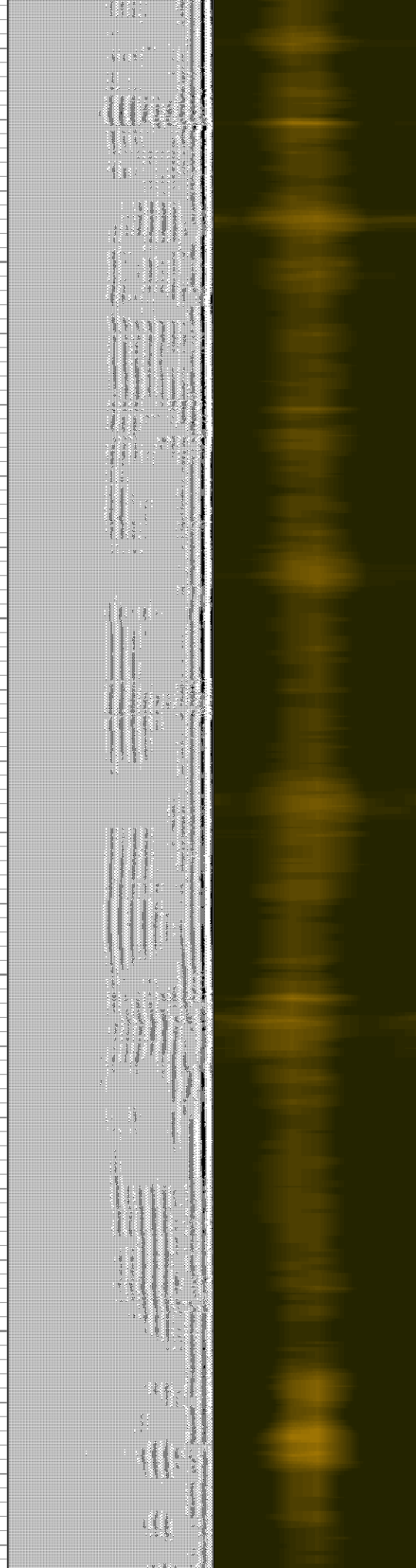






3100

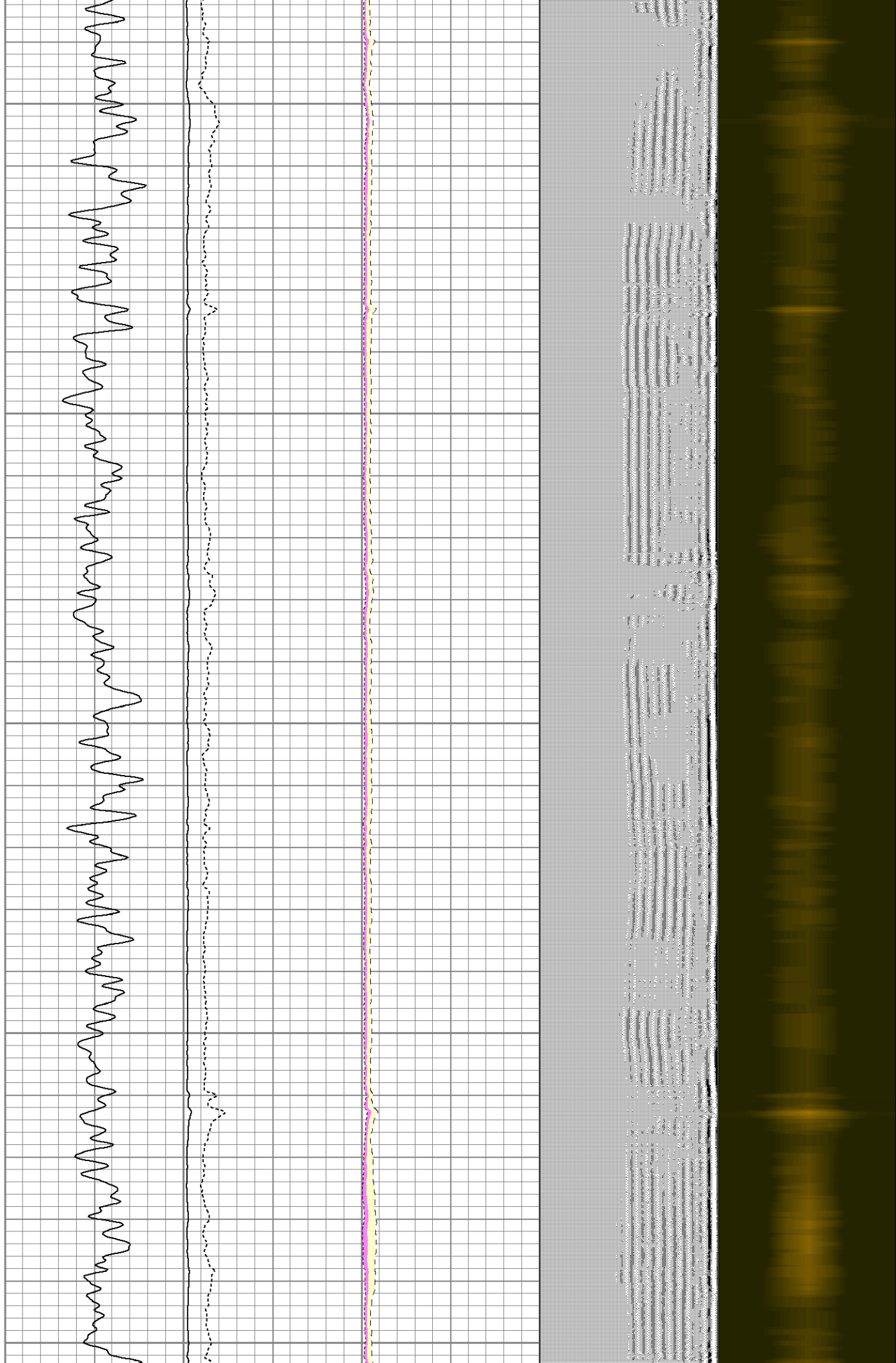
3200

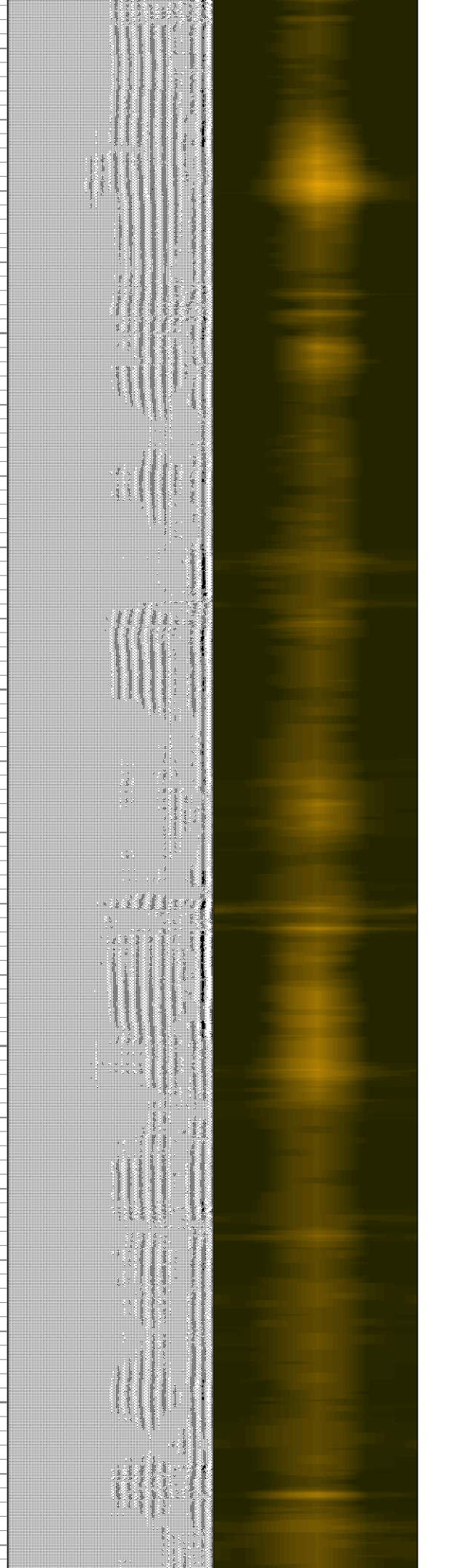
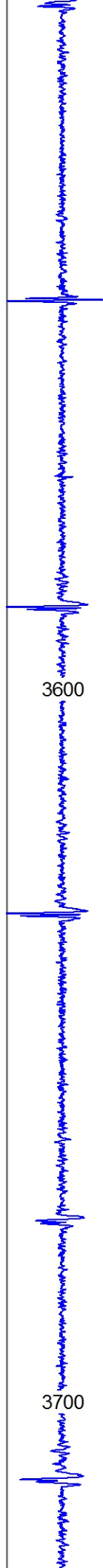


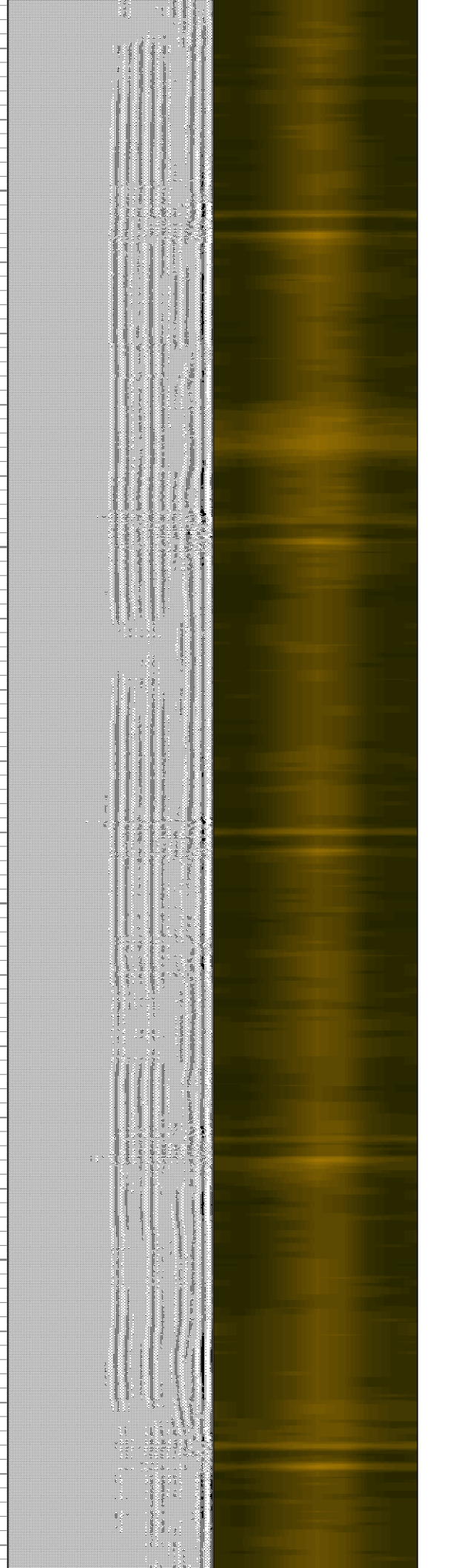
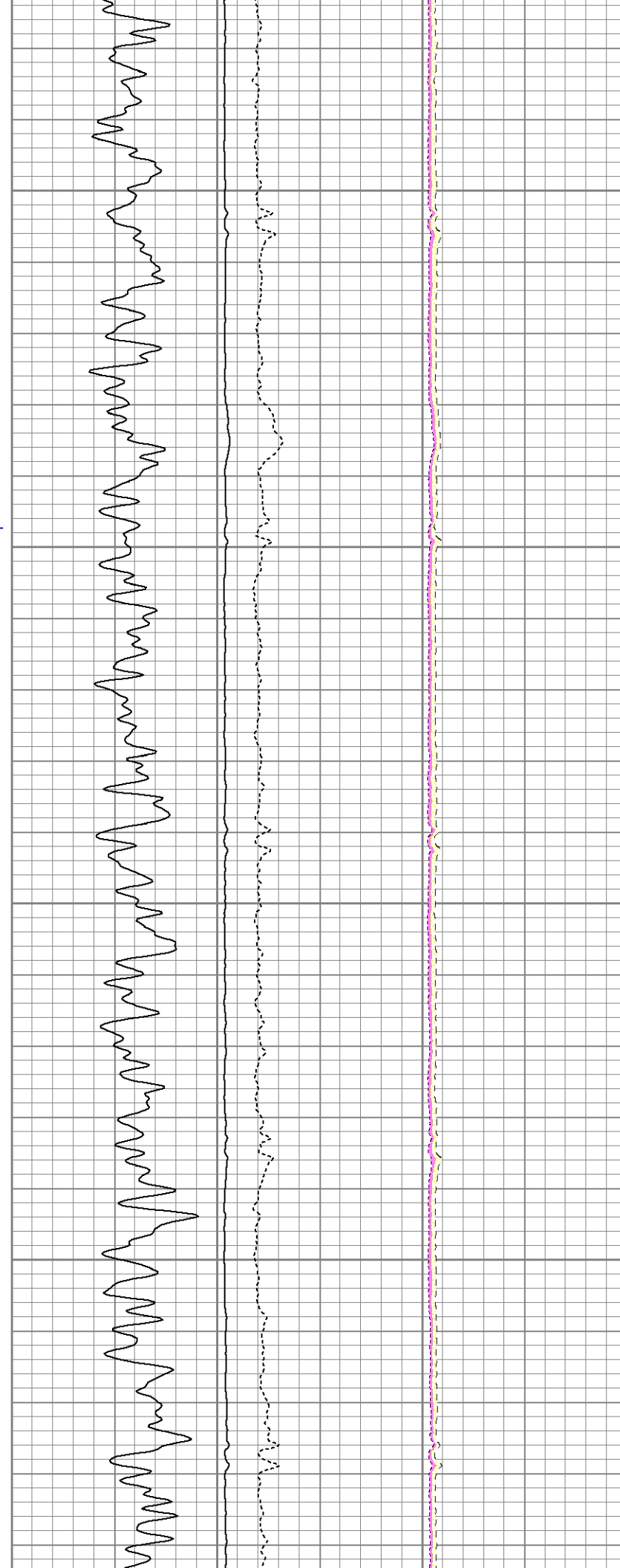
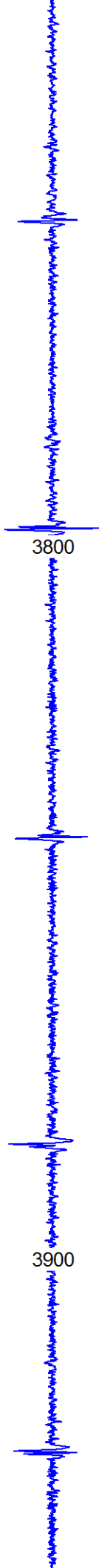
3300

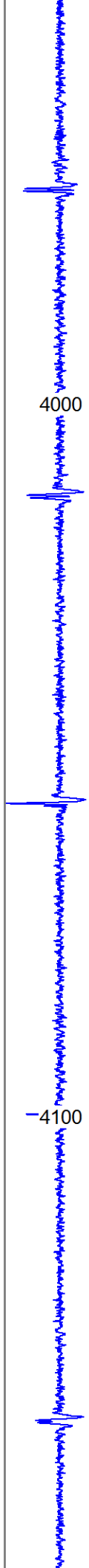
3400

3500



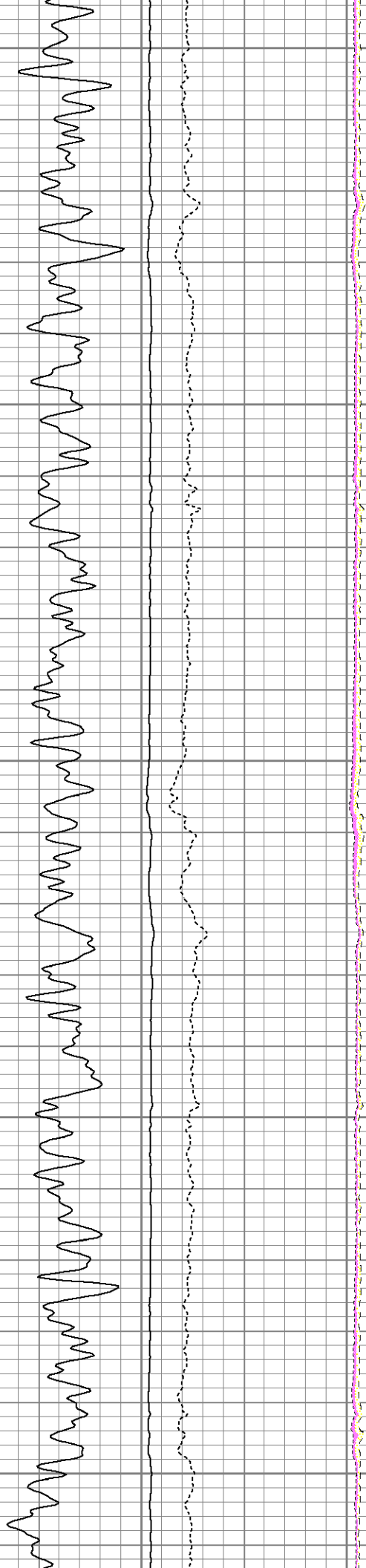






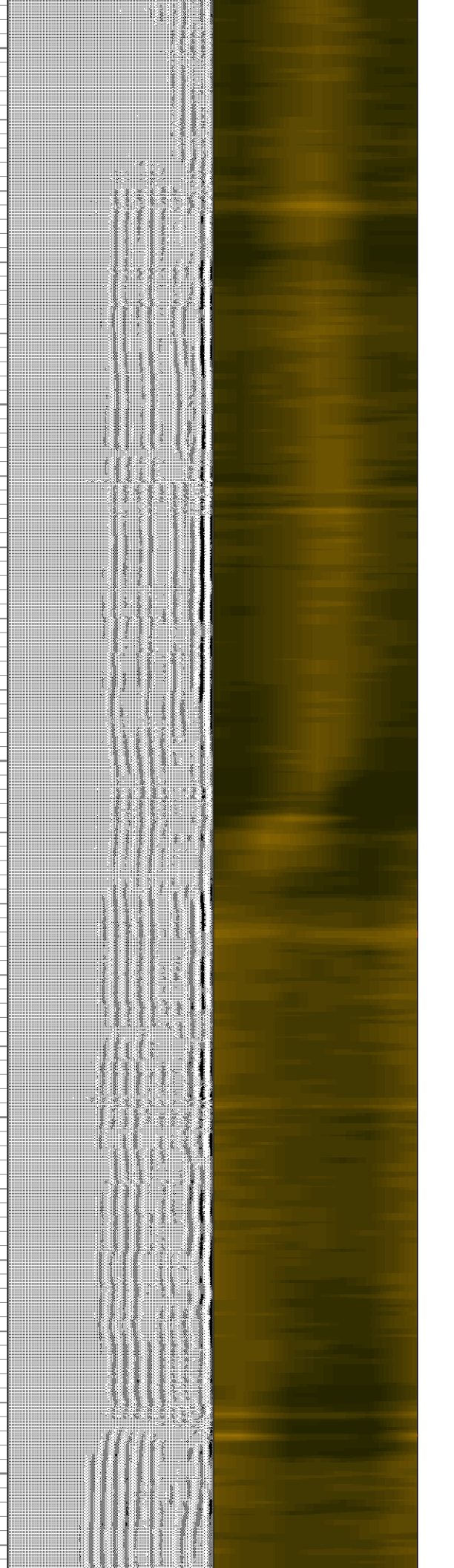
4000

4100



4000

4100

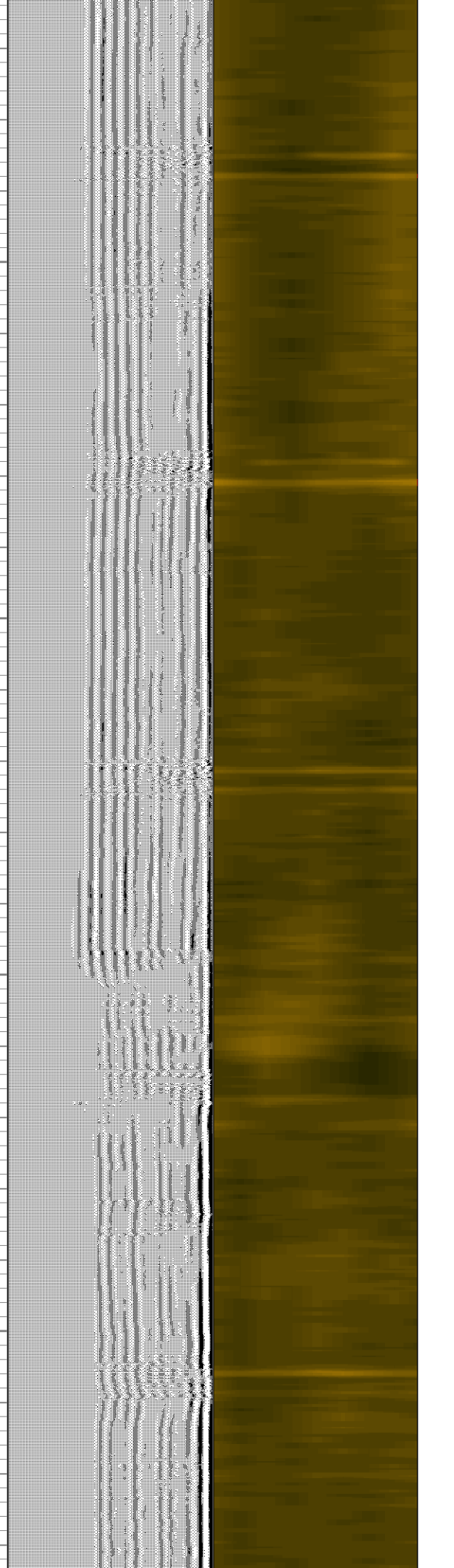
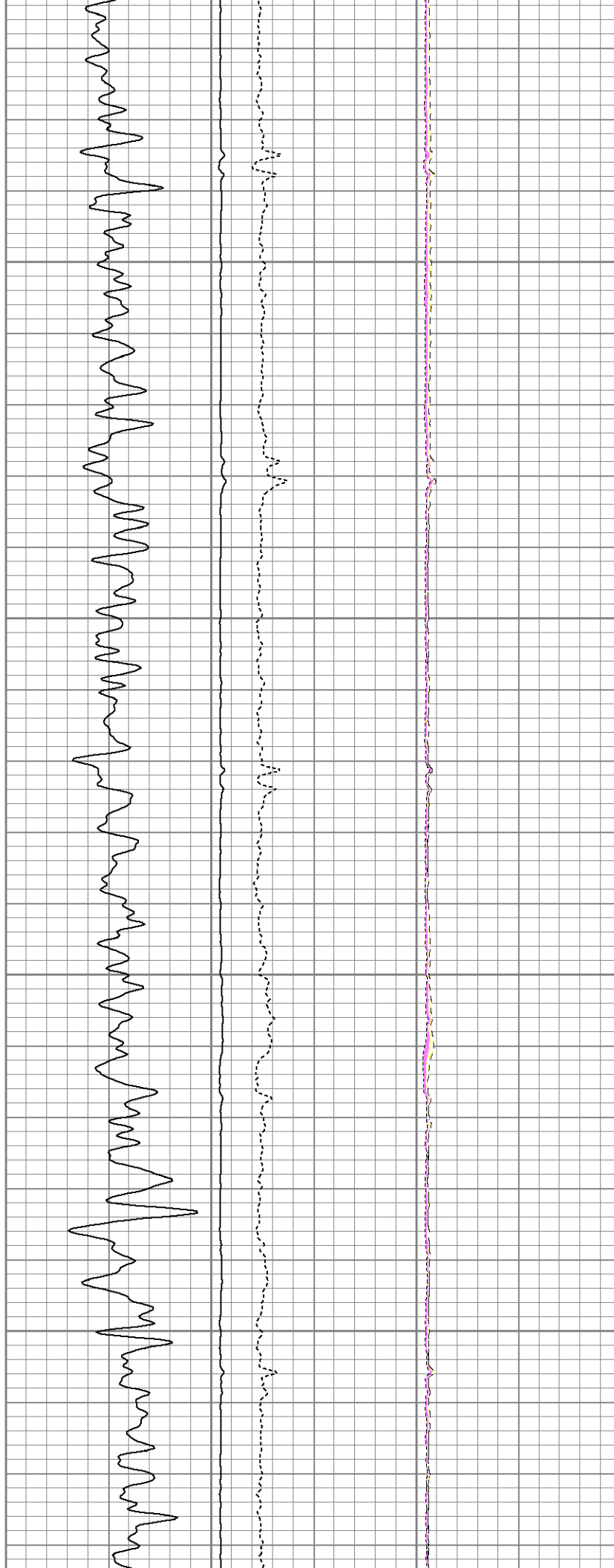


4000

4100

4200

4300

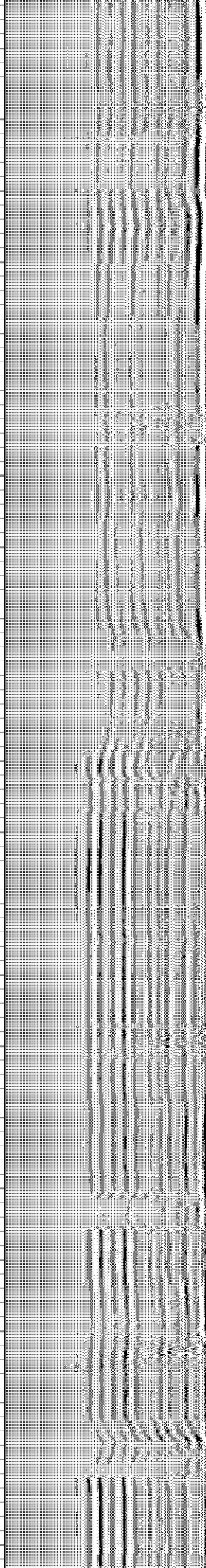
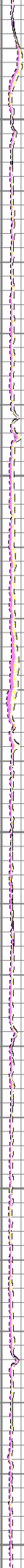
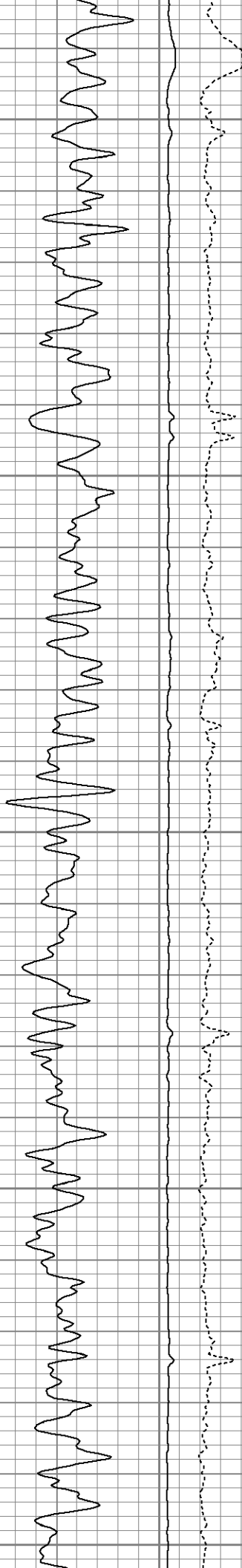


-4400



4500

4600





4700

4800

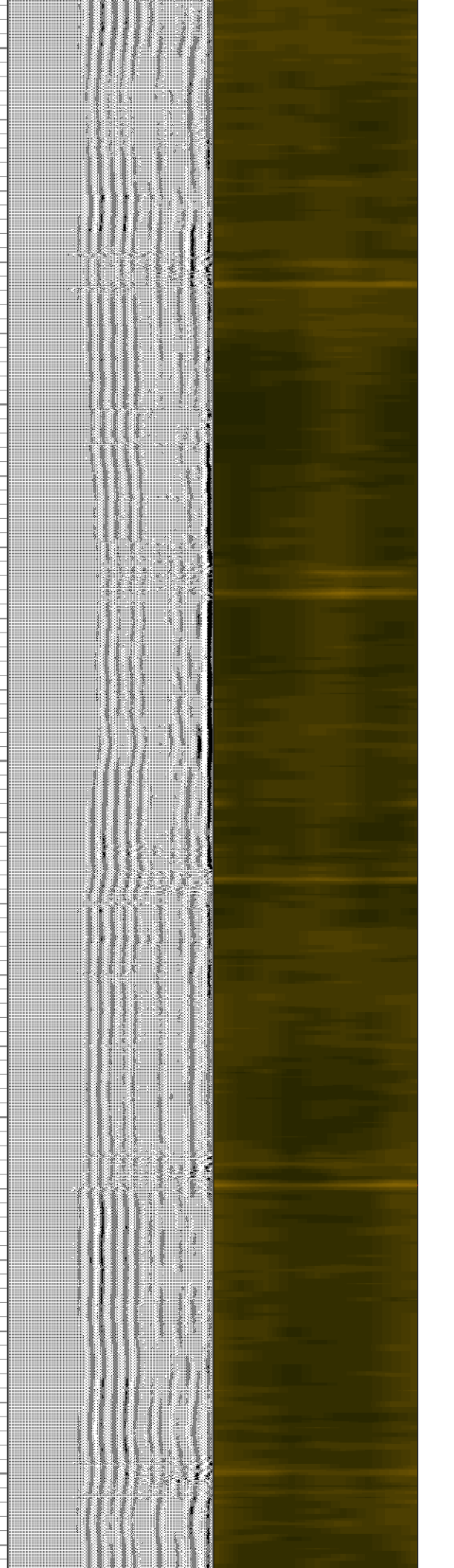
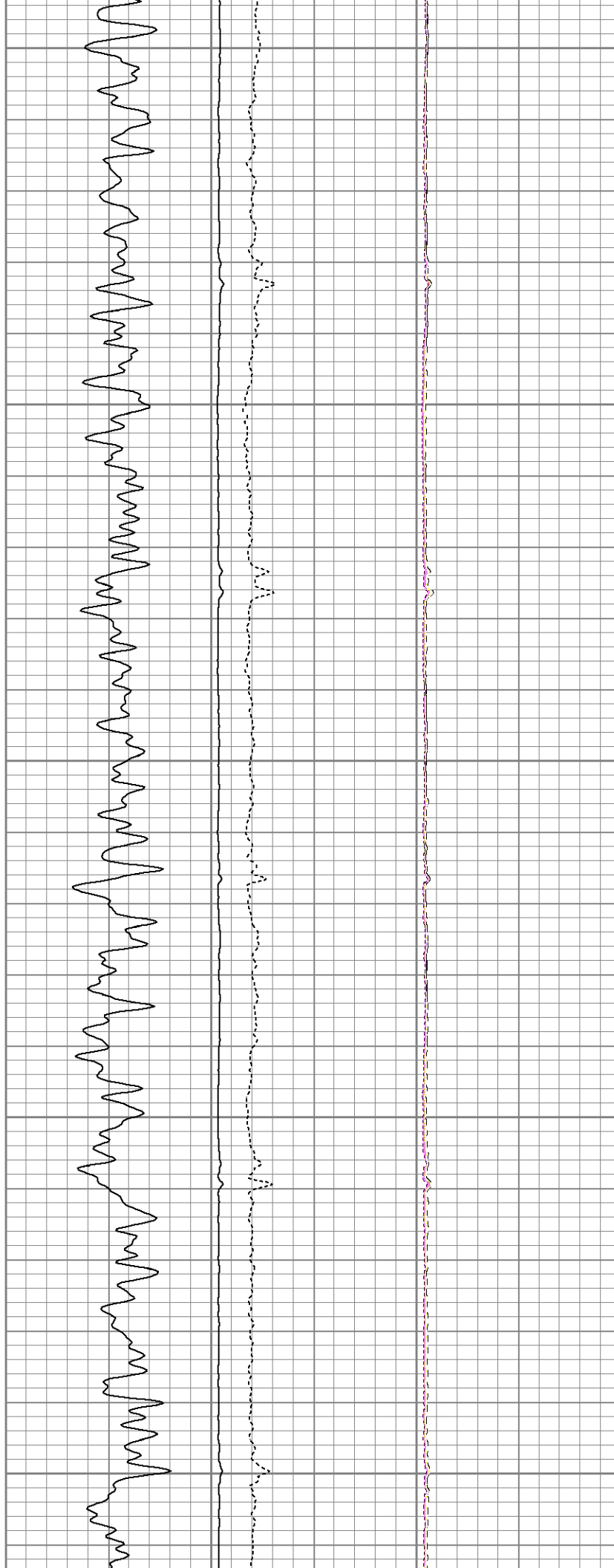
4900

5000



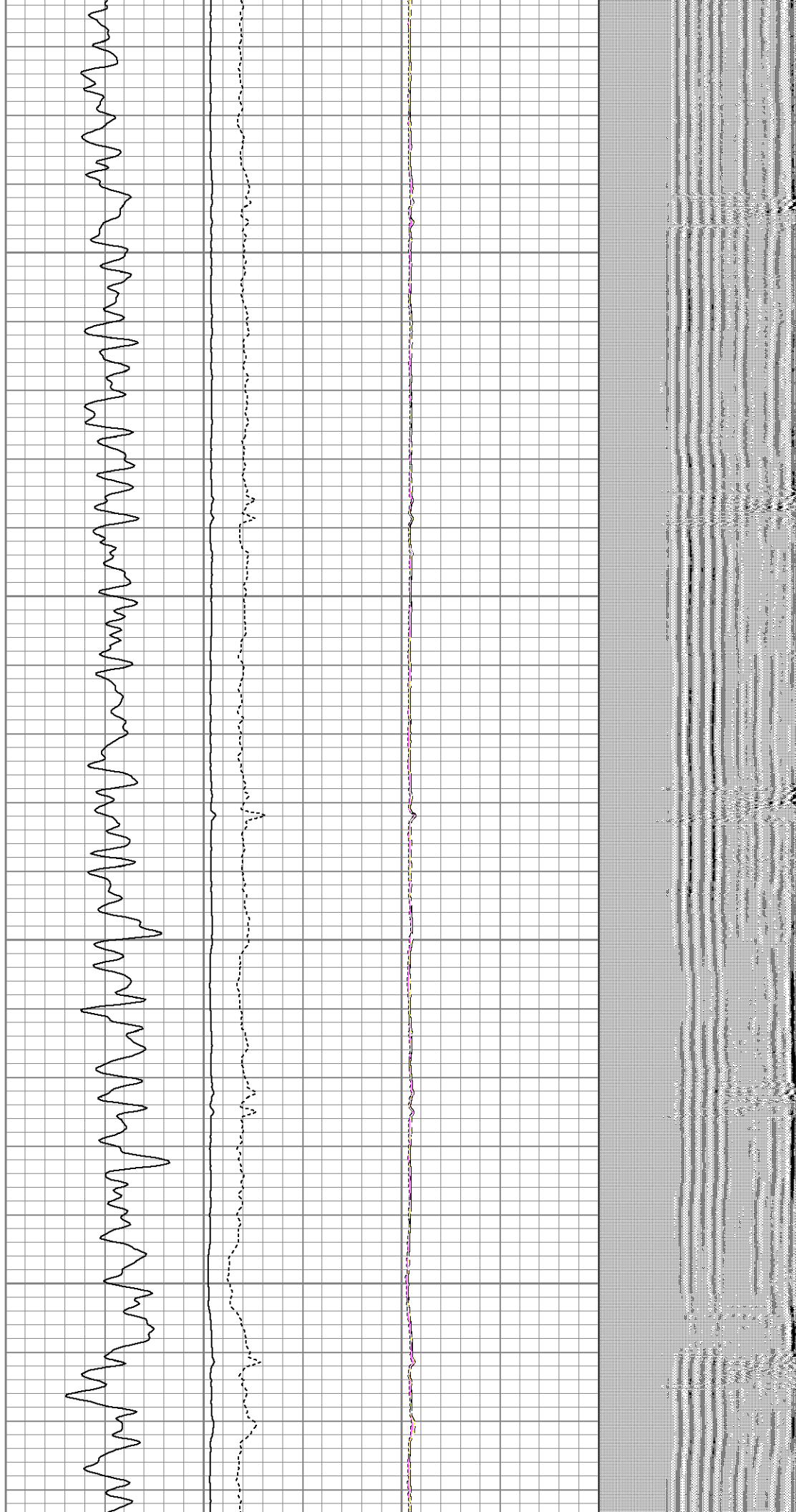
5100

5200



5300

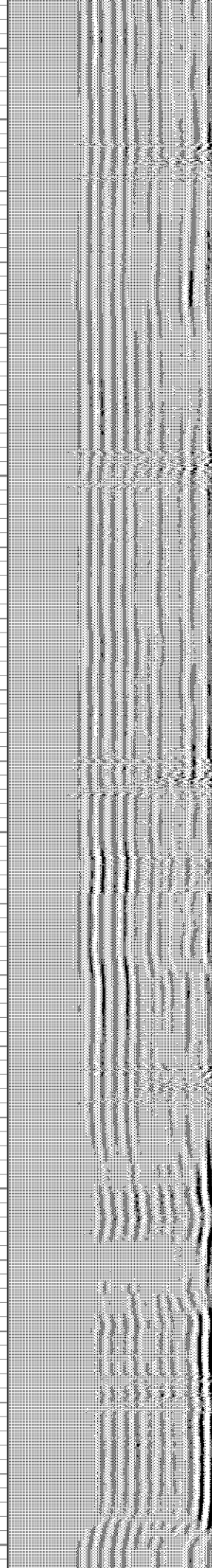
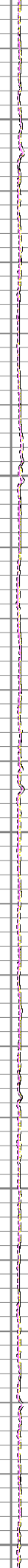
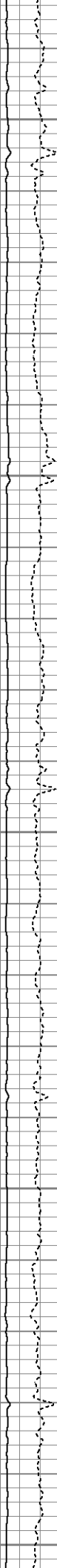
5400



5500

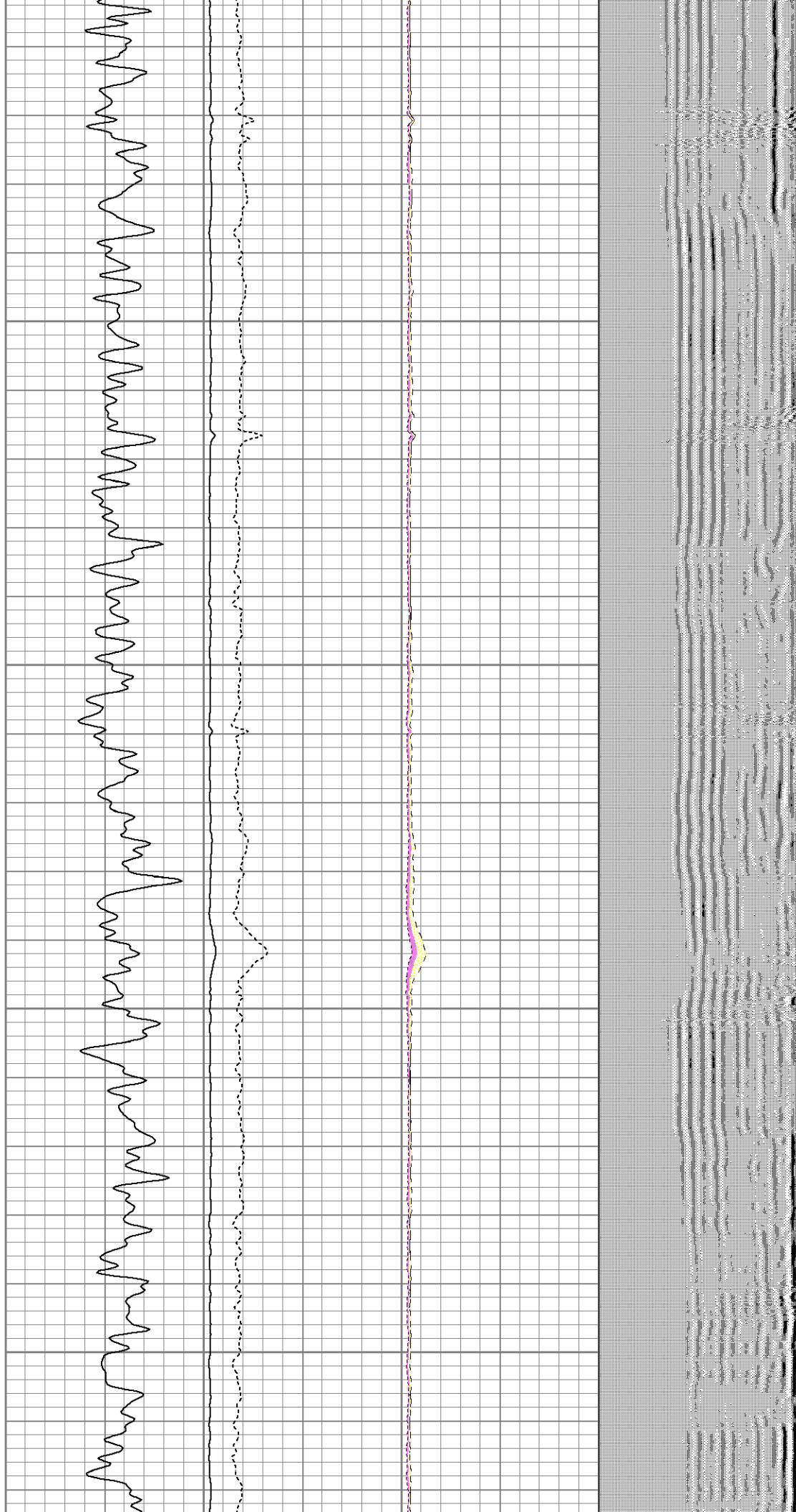
5600

5700



5800

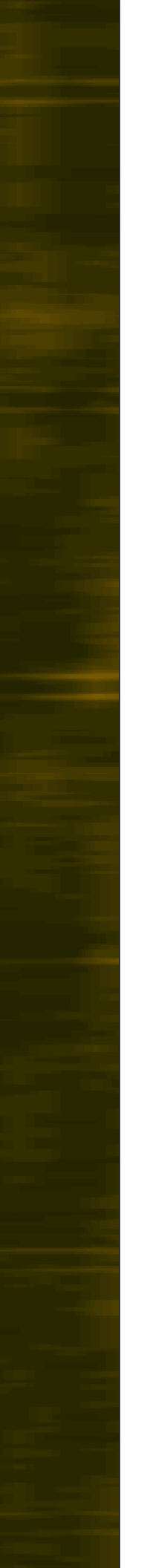
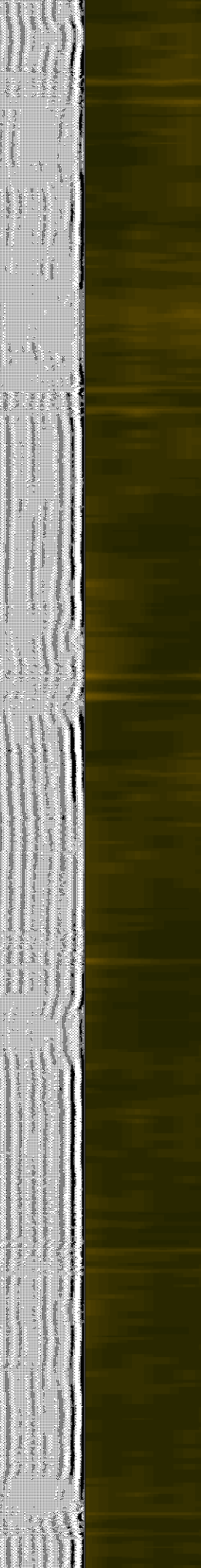
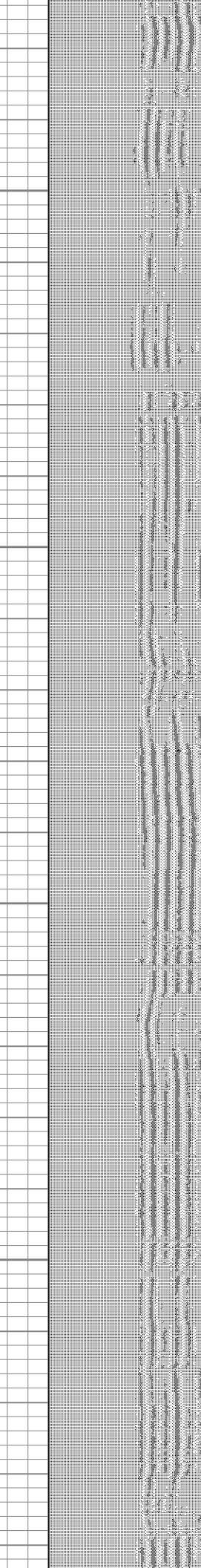
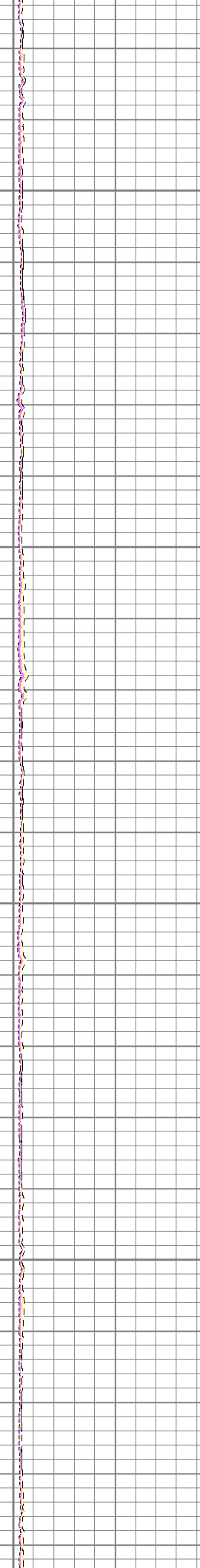
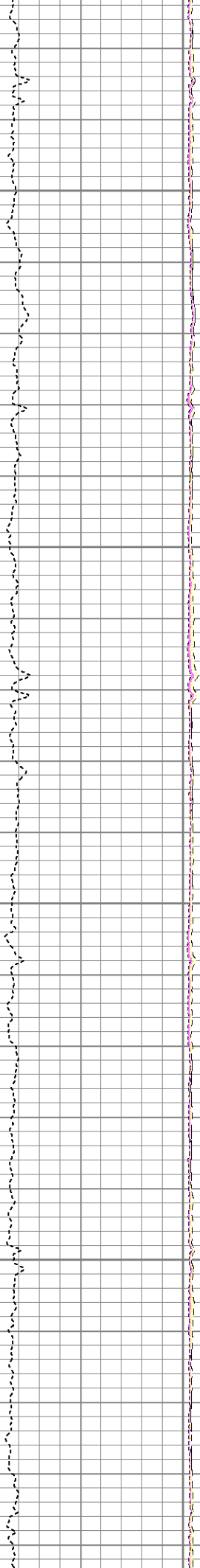
5900





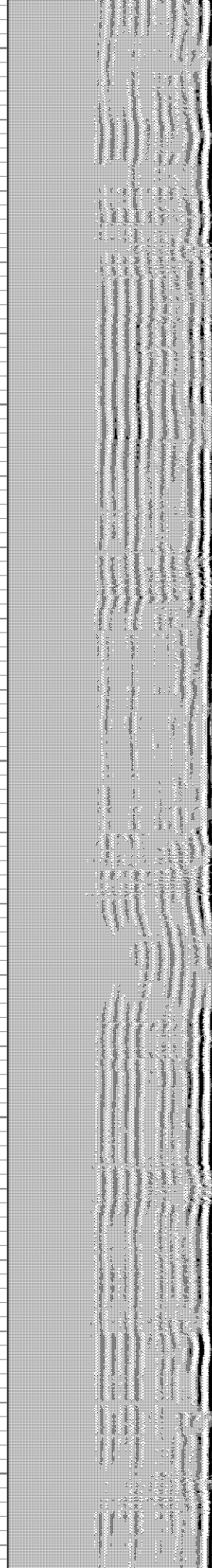
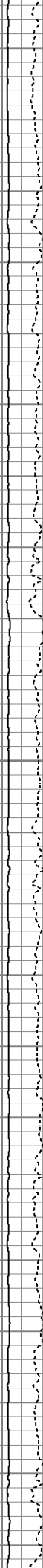
6000

6100



6200

6300



6400

6500

