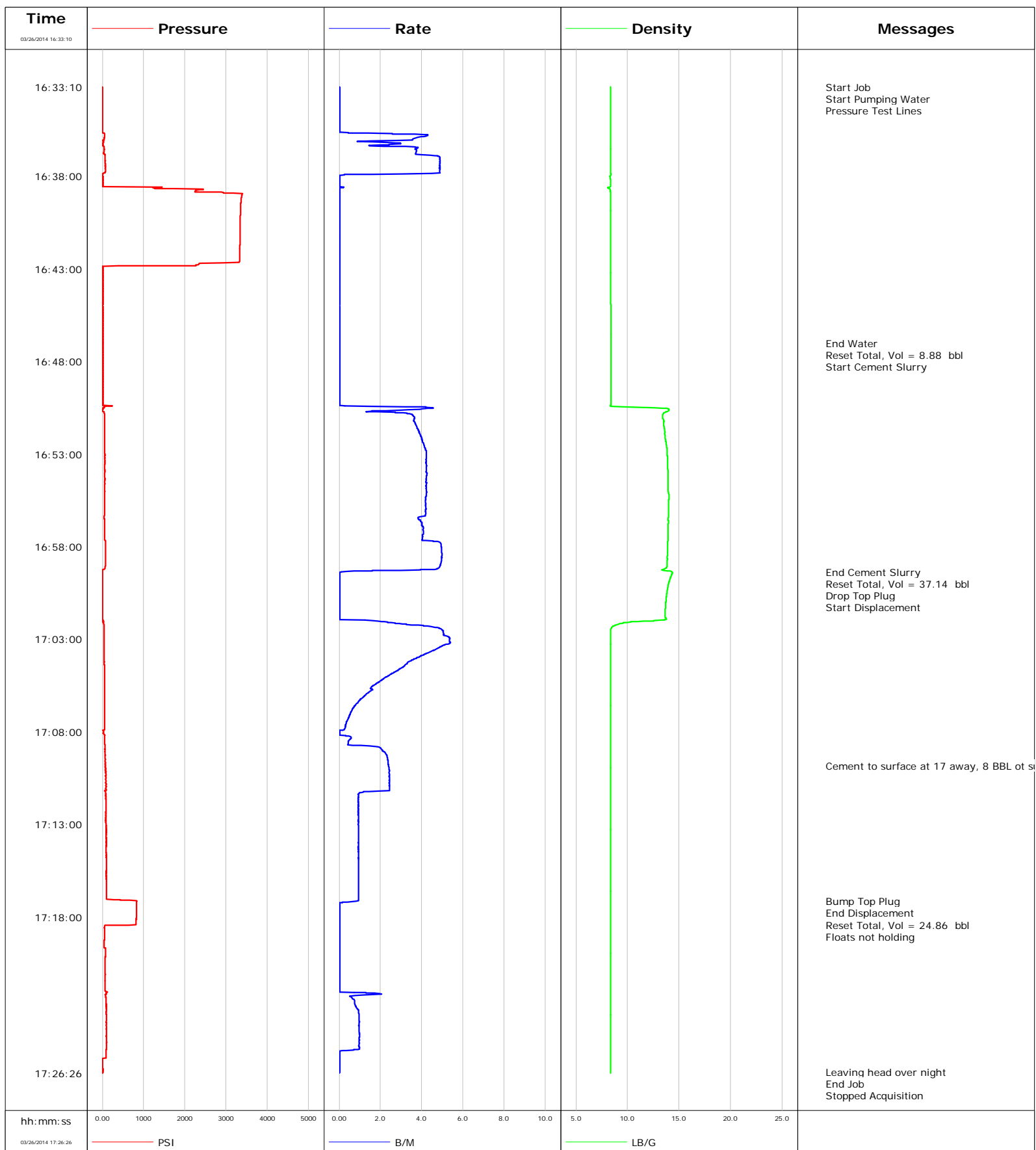


Well Arikaree Creek SWD-1
Field DJ
Engineer Anthony Fowler
Country United States

Client Nighthawk
SIR No. C459-02510
Job Type 9 5/8 Surface
Job Date 03-26-2014



Page 1 of 4

Well Arikaree Creek SWD-1			Field DJ		Job Start Mar/26/2014	Customer Nighthawk	Job Number C459-02510
Date	Time 24-hr clock	Treating Pressure PSI	Flow Rate B/M	Density LB/G	Volume BBL	Message	
03/26/2014	16:41:00	3338	0.0	8.37	8.9		
03/26/2014	16:41:30	3335	0.0	8.37	8.9		
03/26/2014	16:42:00	3331	0.0	8.36	8.9		
03/26/2014	16:42:30	3329	0.0	8.36	8.9		
03/26/2014	16:43:00	3	0.0	8.36	8.9		
03/26/2014	16:43:30	9	0.0	8.36	8.9		
03/26/2014	16:44:00	7	0.0	8.37	8.9		
03/26/2014	16:44:30	5	0.0	8.37	8.9		
03/26/2014	16:45:30	4	0.0	8.39	8.9		
03/26/2014	16:46:00	2	0.0	8.40	8.9		
03/26/2014	16:46:30	8	0.0	8.40	8.9		
03/26/2014	16:47:00					End Water	
03/26/2014	16:47:00	7	0.0	8.40	8.9		
03/26/2014	16:47:02					Reset Total, Vol = 8.88 bbl	
03/26/2014	16:47:02	7	0.0	8.40	8.9		
03/26/2014	16:47:30	8	0.0	8.41	0.0		
03/26/2014	16:47:54					Start Cement Slurry	
03/26/2014	16:47:54	7	0.0	8.41	0.0		
03/26/2014	16:48:00	7	0.0	8.41	0.0		
03/26/2014	16:48:30	9	0.0	8.41	0.0		
03/26/2014	16:49:00	7	0.0	8.41	0.0		
03/26/2014	16:49:30	7	0.0	8.42	0.0		
03/26/2014	16:50:00	7	0.0	8.42	0.0		
03/26/2014	16:50:30	39	4.5	12.55	0.3		
03/26/2014	16:51:00	56	3.6	13.42	1.9		
03/26/2014	16:51:30	56	3.7	13.51	3.7		
03/26/2014	16:52:00	57	3.9	13.63	5.6		
03/26/2014	16:52:30	58	4.1	13.76	7.7		
03/26/2014	16:53:00	59	4.2	13.84	9.7		
03/26/2014	16:53:30	60	4.2	13.90	11.9		
03/26/2014	16:54:00	60	4.2	13.90	14.0		
03/26/2014	16:54:30	59	4.2	13.91	16.1		
03/26/2014	16:55:00	58	4.2	13.94	18.2		
03/26/2014	16:55:30	57	4.2	14.00	20.3		
03/26/2014	16:56:00	57	4.2	13.99	22.4		
03/26/2014	16:56:30	47	3.8	13.95	24.5		
03/26/2014	16:57:00	54	4.1	13.93	26.4		
03/26/2014	16:57:30	51	4.0	13.92	28.5		
03/26/2014	16:58:00	78	4.9	13.89	30.8		
03/26/2014	16:58:30	78	5.0	13.86	33.2		
03/26/2014	16:59:00	73	4.9	13.81	35.7		
03/26/2014	16:59:22					End Cement Slurry	
03/26/2014	16:59:22	-9	0.1	14.24	37.1		
03/26/2014	16:59:23					Reset Total, Vol = 37.14 bbl	
03/26/2014	16:59:23	-9	0.1	14.30	37.1		
03/26/2014	16:59:26					Drop Top Plug	
03/26/2014	16:59:26	-8	0.0	14.34	0.0		
03/26/2014	16:59:27					Start Displacement	
03/26/2014	16:59:27	-9	0.0	14.33	0.0		
03/26/2014	16:59:30	-8	0.0	14.30	0.0		
03/26/2014	17:00:00	-8	0.0	13.97	0.0		
03/26/2014	17:00:30	-7	0.0	13.82	0.0		
03/26/2014	17:01:00	-6	0.0	13.71	0.0		
03/26/2014	17:01:30	-7	0.0	13.65	0.0		

Well Arikaree Creek SWD-1			Field DJ		Job Start Mar/26/2014	Customer Nighthawk	Job Number C459-02510
Date	Time 24-hr clock	Treating Pressure PSI	Flow Rate B/M	Density LB/G	Volume BBL	Message	
03/26/2014	17:02:30	42	5.0	8.37	1.9		
03/26/2014	17:03:00	42	5.3	8.35	4.4		
03/26/2014	17:03:30	43	4.8	8.35	7.0		
03/26/2014	17:04:00	46	3.8	8.35	9.2		
03/26/2014	17:04:30	49	3.1	8.35	10.9		
03/26/2014	17:05:00	51	2.4	8.35	12.2		
03/26/2014	17:05:30	53	1.7	8.35	13.2		
03/26/2014	17:06:00	54	1.3	8.35	14.0		
03/26/2014	17:06:30	55	0.8	8.35	14.5		
03/26/2014	17:07:00	56	0.6	8.34	14.9		
03/26/2014	17:07:30	56	0.3	8.34	15.1		
03/26/2014	17:08:00	29	0.0	8.34	15.2		
03/26/2014	17:08:30	59	0.5	8.34	15.4		
03/26/2014	17:09:00	63	2.1	8.34	16.0		
03/26/2014	17:09:30	75	2.4	8.34	17.1		
03/26/2014	17:09:50					Cement to surface at 17 away, 8 BBL ot surface	
03/26/2014	17:09:50	83	2.4	8.35	17.9		
03/26/2014	17:10:00	81	2.4	8.35	18.3		
03/26/2014	17:10:30	86	2.4	8.34	19.5		
03/26/2014	17:11:00	89	2.4	8.35	20.7		
03/26/2014	17:11:30	90	0.9	8.35	21.5		
03/26/2014	17:12:00	85	0.9	8.35	22.0		
03/26/2014	17:12:30	85	0.9	8.35	22.5		
03/26/2014	17:13:00	94	0.9	8.34	22.9		
03/26/2014	17:13:30	96	0.9	8.34	23.4		
03/26/2014	17:14:00	97	0.9	8.35	23.9		
03/26/2014	17:14:30	89	0.9	8.35	24.3		
03/26/2014	17:15:00	96	0.9	8.35	24.8		
03/26/2014	17:15:30	93	0.9	8.35	25.3		
03/26/2014	17:16:00	100	1.0	8.35	25.7		
03/26/2014	17:16:30	102	0.9	8.35	26.2		
03/26/2014	17:17:00	105	0.9	8.35	26.7		
03/26/2014	17:17:09					Bump Top Plug	
03/26/2014	17:17:09	823	0.8	8.35	26.8		
03/26/2014	17:17:10					End Displacement	
03/26/2014	17:17:10	834	0.8	8.35	26.8		
03/26/2014	17:17:13					Reset Total, Vol = 24.86 bbl	
03/26/2014	17:17:13	831	0.2	8.35	26.9		
03/26/2014	17:17:30	824	0.0	8.35	0.0		
03/26/2014	17:18:00	822	0.0	8.35	0.0		
03/26/2014	17:18:30	48	0.0	8.35	0.0		
03/26/2014	17:18:34					Floats not holding	
03/26/2014	17:18:34	48	0.0	8.35	0.0		
03/26/2014	17:19:00	50	0.0	8.35	0.0		
03/26/2014	17:19:30	44	0.0	8.35	0.0		
03/26/2014	17:20:00	73	0.0	8.35	0.0		
03/26/2014	17:20:30	71	0.0	8.35	0.0		
03/26/2014	17:21:00	70	0.0	8.35	0.0		
03/26/2014	17:21:30	64	0.0	8.35	0.0		
03/26/2014	17:22:00	63	0.0	8.35	0.0		
03/26/2014	17:22:30	88	0.7	8.35	0.4		
03/26/2014	17:23:00	96	0.9	8.35	0.8		
03/26/2014	17:23:30	99	1.0	8.35	1.3		
03/26/2014	17:24:00	100	1.0	8.35	1.8		

Well Arikaree Creek SWD-1			Field DJ		Job Start Mar/26/2014	Customer Nighthawk		Job Number C459-02510	
Date	Time 24-hr clock	Treating Pressure PSI	Flow Rate B/M	Density LB/G	Volume BBL	Message			
03/26/2014	17:25:00	105	1.0	8.35	2.7				
03/26/2014	17:25:30	89	0.0	8.35	2.9				
03/26/2014	17:26:00	-1	0.0	8.35	2.9				
03/26/2014	17:26:22					Leaving head over night			
03/26/2014	17:26:22	4	0.0	8.35	2.9				
03/26/2014	17:26:23					End Job			
03/26/2014	17:26:23	4	0.0	8.35	2.9				

Post Job Summary

Average Pump Rates, bbl/min					Volume of Fluid Injected, bbl			
Slurry 2.6	N2	Mud 0.0	Maximum Rate 5.4	Total Slurry 36.0	Mud 0.0	Spacer 0.0	N2	
Treating Pressure Summary, psi					Breakdown Fluid			
Maximum 3395	Final 5	Average 362	Bump Plug to	Breakdown	Type	Volume	Density	
Avg. N2 Percent	Designed Slurry Volume 36.0 bbl		Displacement 25.0 bbl	Mix Water Temp	Cement Circulated to Surface? <input checked="" type="checkbox"/>	Volume 8.0 bbl		
					Washed Thru Perfs <input type="checkbox"/>	To		
Customer or Authorized Representative			Schlumberger Supervisor Anthony Fowler			Circulation Lost <input type="checkbox"/>	Job Completed <input checked="" type="checkbox"/>	
						-	-	