

# BONANZA CREEK OIL COMPANY

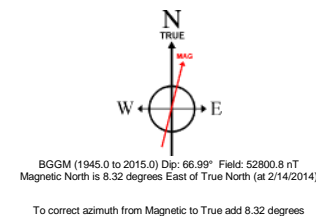
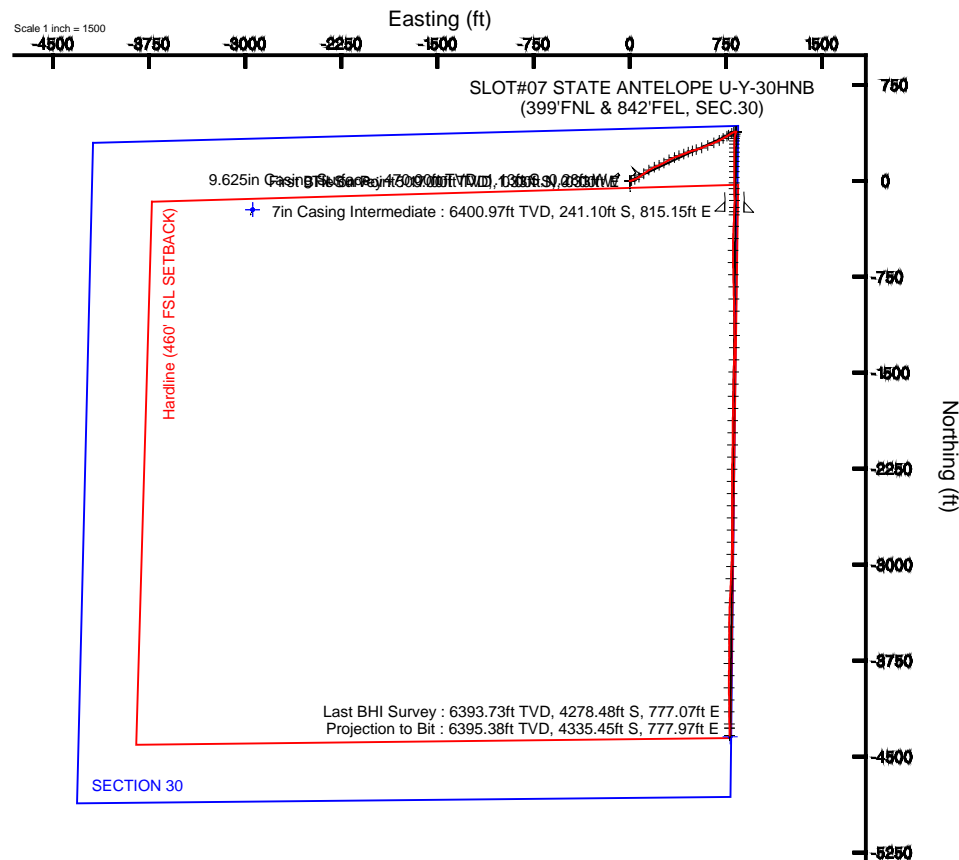
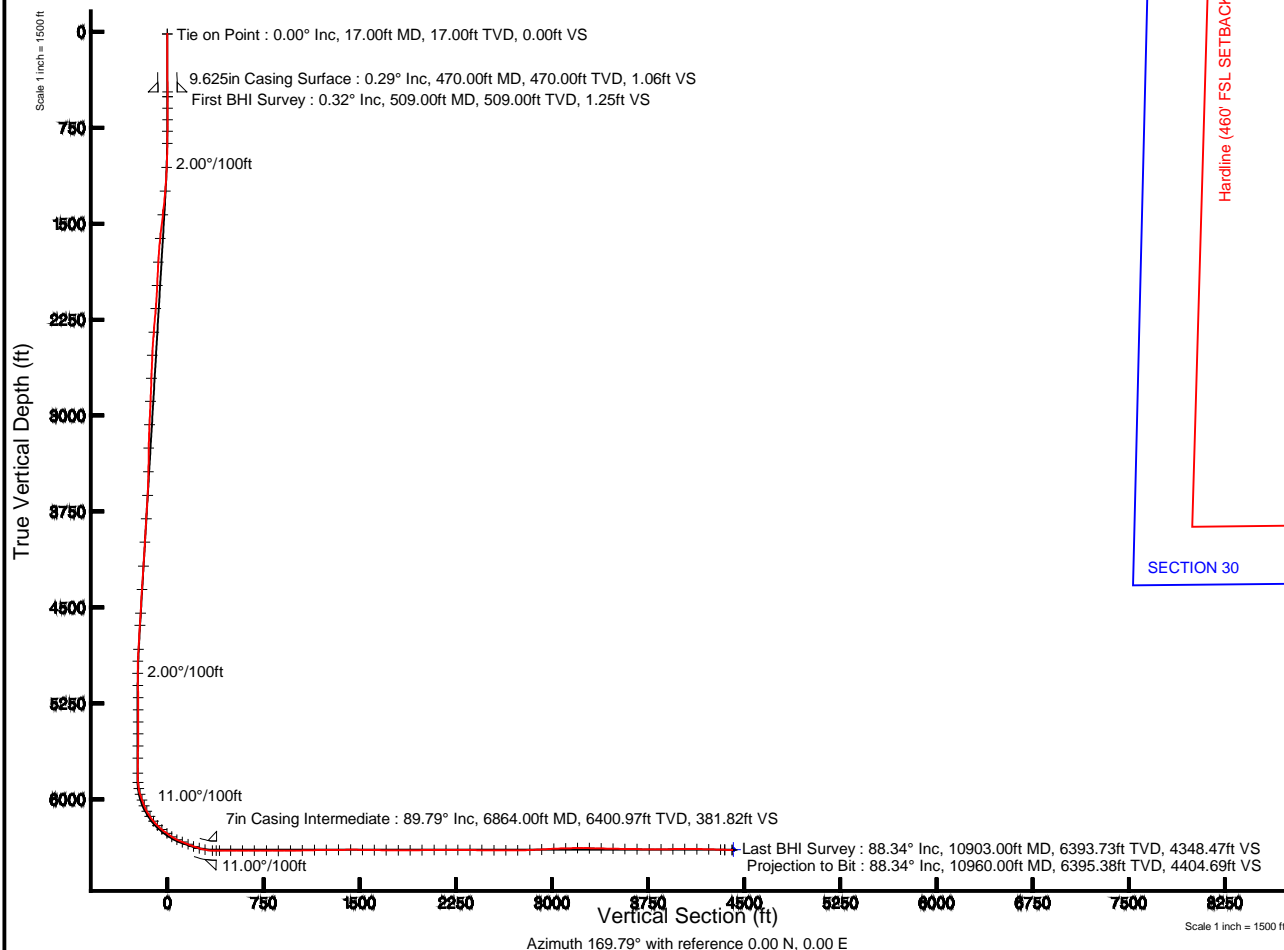
Location: COLORADO Slot: SLOT#07 STATE ANTELOPE U-Y-30HNB (399'FNL & 842'FEL, SEC.30)  
Field: WELD COUNTY Well: STATE ANTELOPE U-Y-30HNB  
Facility: SEC.30-T5N-R62W Wellbore: STATE ANTELOPE U-Y-30HNB PWB

Plot reference wellpath is STATE ANTELOPE U-Y-30HNB (REV-B.0) PWP

True vertical depths are referenced to CADE 26 (RKB)	Grid System: NAD83 / Lambert Colorado SP, Northern Zone (501), US feet
Measured depths are referenced to CADE 26 (RKB)	North Reference: True north
CADE 26 (RKB) to Mean Sea Level: 4678 feet	Scale: True distance
Mean Sea Level to Mud line (At Slot: SLOT#07 STATE ANTELOPE U-Y-30HNB (399'FNL & 842'FEL, SEC.30)): 0 feet	Depths are in feet
Coordinates are in feet referenced to Slot	Created by: guenaler on 5/13/2014

## Location Information

Facility Name				Grid East (US ft)	Grid North (US ft)	Latitude	Longitude
SEC.30-T5N-R62W				3314735.928	1381829.438	40°22'33.672"N	104°22'13.080"W
Slot	Local N (ft)	Local E (ft)					
SLOT#07 STATE ANTELOPE U-Y-30HNB (399'FNL & 842'FEL, SEC.30)	226.05	2942.21	Grid East (US ft)	Grid North (US ft)	Latitude	Longitude	
CADE 26 (RKB) to Mud line (At Slot: SLOT#07 STATE ANTELOPE U-Y-30HNB (399'FNL & 842'FEL, SEC.30))			3317674.892	1382092.938	40°22'35.904"N	104°21'35.064"W	
Mean Sea Level to Mud line (At Slot: SLOT#07 STATE ANTELOPE U-Y-30HNB (399'FNL & 842'FEL, SEC.30))							0ft
CADE 26 (RKB) to Mean Sea Level							4678ft





# Actual Wellpath Report

STATE ANTELOPE U-Y-30HNB AWP

Page 1 of 6



## REFERENCE WELLPATH IDENTIFICATION

Operator	BONANZA CREEK OIL COMPANY	Slot	SLOT#07 STATE ANTELOPE U-Y-30HNB (399'FNL & 842'FEL, SEC.30)
Area	COLORADO	Well	STATE ANTELOPE U-Y-30HNB
Field	WELD COUNTY	Wellbore	STATE ANTELOPE U-Y-30HNB AWB
Facility	SEC.30-T5N-R62W		

## REPORT SETUP INFORMATION

Projection System	NAD83 / Lambert Colorado SP, Northern Zone (501), US feet	Software System	WellArchitect® 4.0.0
North Reference	True	User	Guenaler
Scale	0.999959	Report Generated	5/13/2014 at 12:21:49 PM
Convergence at slot	n/a	Database/Source file	WA_Denver/STATE_ANTELOPE_U-Y-30HNB_AWB.xml

## WELLPATH LOCATION

	Local coordinates		Grid coordinates		Geographic coordinates	
	North[ft]	East[ft]	Easting[US ft]	Northing[US ft]	Latitude	Longitude
Slot Location	226.05	2942.21	3317674.89	1382092.94	40°22'35.904"N	104°21'35.064"W
Facility Reference Pt			3314735.93	1381829.44	40°22'33.672"N	104°22'13.080"W
Field Reference Pt			3327718.19	1377782.99	40°21'52.020"N	104°19'26.040"W

## WELLPATH DATUM

Calculation method	Minimum curvature	CADE 26 (RKB) to Facility Vertical Datum	4678.00ft
Horizontal Reference Pt	Slot	CADE 26 (RKB) to Mean Sea Level	4678.00ft
Vertical Reference Pt	CADE 26 (RKB)	CADE 26 (RKB) to Mud Line at Slot (SLOT#07 STATE ANTELOPE U-Y-30HNB (399'FNL & 842'FEL, SEC.30))	4678.00ft
MD Reference Pt	CADE 26 (RKB)	Section Origin	N 0.00, E 0.00 ft
Field Vertical Reference	Mean Sea Level	Section Azimuth	169.83°



# Actual Wellpath Report

## STATE ANTELOPE U-Y-30HNB AWP

Page 2 of 6



REFERENCE WELLPATH IDENTIFICATION			
Operator	BONANZA CREEK OIL COMPANY	Slot	SLOT#07 STATE ANTELOPE U-Y-30HNB (399'FNL & 842'FEL, SEC.30)
Area	COLORADO	Well	STATE ANTELOPE U-Y-30HNB
Field	WELD COUNTY	Wellbore	STATE ANTELOPE U-Y-30HNB AWB
Facility	SEC.30-T5N-R62W		

WELLPATH DATA (103 stations) † = interpolated/extrapolated station										
MD [ft]	Inclination [°]	Azimuth [°]	TVD [ft]	Vert Sect [ft]	North [ft]	East [ft]	Latitude	Longitude	DLS [°/100ft]	Comments
0.00†	0.000	194.050	0.00	0.00	0.00	0.00	40°22'35.904"N	104°21'35.064"W	0.00	
17.00	0.000	194.050	17.00	0.00	0.00	0.00	40°22'35.904"N	104°21'35.064"W	0.00	Tie on Point
509.00	0.320	194.050	509.00	1.25	-1.33	-0.33	40°22'35.891"N	104°21'35.068"W	0.07	First BHI Survey
599.00	0.390	234.310	599.00	1.61	-1.76	-0.64	40°22'35.887"N	104°21'35.072"W	0.28	
688.00	1.710	66.810	687.98	1.45	-1.41	0.33	40°22'35.890"N	104°21'35.060"W	2.35	
777.00	4.150	71.910	776.86	0.70	0.11	4.61	40°22'35.905"N	104°21'35.004"W	2.75	
873.00	6.460	75.530	872.44	-0.18	2.54	13.15	40°22'35.929"N	104°21'34.894"W	2.43	
1063.00	10.330	66.750	1060.38	-4.84	11.94	39.16	40°22'36.022"N	104°21'34.558"W	2.14	
1253.00	12.390	57.030	1246.67	-16.59	29.76	71.92	40°22'36.198"N	104°21'34.135"W	1.48	
1443.00	15.130	54.470	1431.20	-35.11	55.27	109.21	40°22'36.450"N	104°21'33.653"W	1.48	
1633.00	15.210	56.210	1614.58	-55.72	83.54	150.10	40°22'36.730"N	104°21'33.125"W	0.24	
1826.00	13.710	67.510	1801.50	-70.74	106.38	192.28	40°22'36.955"N	104°21'32.580"W	1.65	
2013.00	10.960	67.210	1984.16	-79.35	121.74	229.15	40°22'37.107"N	104°21'32.103"W	1.47	
2198.00	14.530	61.180	2164.58	-90.62	139.75	265.71	40°22'37.285"N	104°21'31.631"W	2.06	
2387.00	14.510	60.470	2347.54	-106.05	162.85	307.09	40°22'37.513"N	104°21'31.096"W	0.09	
2574.00	13.260	69.610	2529.10	-117.62	181.87	347.58	40°22'37.701"N	104°21'30.573"W	1.35	
2758.00	11.350	69.250	2708.86	-124.69	195.64	384.29	40°22'37.837"N	104°21'30.099"W	1.04	
2943.00	12.740	69.140	2889.79	-131.81	209.35	420.38	40°22'37.973"N	104°21'29.632"W	0.75	
3128.00	11.240	66.710	3070.75	-139.69	223.74	456.00	40°22'38.115"N	104°21'29.172"W	0.86	
3315.00	9.210	74.840	3254.78	-145.12	234.86	487.19	40°22'38.225"N	104°21'28.769"W	1.33	
3502.00	11.260	75.050	3438.79	-147.94	243.49	519.28	40°22'38.310"N	104°21'28.354"W	1.10	
3692.00	14.870	67.970	3623.85	-154.50	257.42	559.82	40°22'38.448"N	104°21'27.831"W	2.07	
3881.00	16.770	68.450	3805.69	-164.86	276.54	607.66	40°22'38.637"N	104°21'27.212"W	1.01	
4072.00	14.860	67.460	3989.45	-175.55	296.05	655.92	40°22'38.829"N	104°21'26.589"W	1.01	
4266.00	12.270	62.670	4178.03	-186.96	315.05	697.21	40°22'39.017"N	104°21'26.055"W	1.45	
4451.00	10.320	60.020	4359.44	-198.37	332.36	729.03	40°22'39.188"N	104°21'25.644"W	1.09	
4640.00	9.360	59.490	4545.65	-209.45	348.62	756.94	40°22'39.349"N	104°21'25.284"W	0.51	
4735.00	8.870	57.400	4639.45	-214.93	356.49	769.77	40°22'39.427"N	104°21'25.118"W	0.62	
4925.00	9.700	60.750	4826.96	-225.75	372.21	796.07	40°22'39.582"N	104°21'24.778"W	0.52	
5020.00	8.820	65.430	4920.73	-230.18	379.14	809.68	40°22'39.650"N	104°21'24.602"W	1.22	



# Actual Wellpath Report

## STATE ANTELOPE U-Y-30HNB AWP

Page 3 of 6



REFERENCE WELLPATH IDENTIFICATION			
Operator	BONANZA CREEK OIL COMPANY	Slot	SLOT#07 STATE ANTELOPE U-Y-30HNB (399'FNL & 842'FEL, SEC.30)
Area	COLORADO	Well	STATE ANTELOPE U-Y-30HNB
Field	WELD COUNTY	Wellbore	STATE ANTELOPE U-Y-30HNB AWB
Facility	SEC.30-T5N-R62W		

WELLPATH DATA (103 stations)										
MD [ft]	Inclination [°]	Azimuth [°]	TVD [ft]	Vert Sect [ft]	North [ft]	East [ft]	Latitude	Longitude	DLS [°/100ft]	Comments
5115.00	6.540	80.230	5014.88	-231.95	383.09	821.64	40°22'39.689"N	104°21'24.448"W	3.16	
5210.00	3.410	107.400	5109.52	-230.60	383.17	829.67	40°22'39.690"N	104°21'24.344"W	4.04	
5305.00	0.620	121.660	5204.45	-228.95	382.05	832.80	40°22'39.679"N	104°21'24.303"W	2.96	
5400.00	0.740	256.500	5299.45	-228.57	381.64	832.64	40°22'39.675"N	104°21'24.305"W	1.32	
5495.00	0.530	269.430	5394.44	-228.61	381.49	831.61	40°22'39.674"N	104°21'24.319"W	0.27	
5589.00	0.310	327.550	5488.44	-228.92	381.70	831.04	40°22'39.676"N	104°21'24.326"W	0.48	
5684.00	0.460	311.330	5583.44	-229.45	382.17	830.61	40°22'39.680"N	104°21'24.332"W	0.19	
5779.00	0.460	329.690	5678.44	-230.11	382.75	830.13	40°22'39.686"N	104°21'24.338"W	0.15	
5895.00	0.740	345.440	5794.43	-231.30	383.88	829.71	40°22'39.697"N	104°21'24.343"W	0.28	
5968.00	3.750	193.790	5867.38	-229.58	382.01	829.02	40°22'39.679"N	104°21'24.352"W	6.05	
6015.00	11.520	198.920	5913.93	-224.07	376.07	827.13	40°22'39.620"N	104°21'24.377"W	16.58	
6063.00	17.900	194.700	5960.34	-213.18	364.39	823.70	40°22'39.505"N	104°21'24.421"W	13.47	
6110.00	20.520	190.550	6004.72	-198.92	349.30	820.36	40°22'39.356"N	104°21'24.464"W	6.28	
6158.00	23.470	185.790	6049.22	-181.85	331.52	817.86	40°22'39.180"N	104°21'24.496"W	7.18	
6205.00	28.770	182.930	6091.41	-161.82	310.89	816.33	40°22'38.976"N	104°21'24.516"W	11.59	
6253.00	34.690	180.220	6132.22	-137.11	285.68	815.69	40°22'38.727"N	104°21'24.524"W	12.68	
6300.00	40.180	178.680	6169.53	-108.96	257.12	815.99	40°22'38.445"N	104°21'24.521"W	11.85	
6347.00	45.430	179.770	6204.00	-77.46	225.20	816.40	40°22'38.129"N	104°21'24.515"W	11.28	
6394.00	51.130	181.720	6235.26	-43.04	190.14	815.92	40°22'37.783"N	104°21'24.521"W	12.52	
6443.00	54.200	180.240	6264.98	-4.82	151.19	815.26	40°22'37.398"N	104°21'24.530"W	6.71	
6490.00	56.790	179.990	6291.60	33.29	112.46	815.19	40°22'37.015"N	104°21'24.531"W	5.53	
6538.00	63.590	180.170	6315.45	74.25	70.84	815.13	40°22'36.604"N	104°21'24.532"W	14.17	
6585.00	69.980	180.770	6333.97	116.67	27.67	814.77	40°22'36.177"N	104°21'24.536"W	13.65	
6633.00	69.290	180.510	6350.67	160.87	-17.33	814.27	40°22'35.733"N	104°21'24.543"W	1.52	
6680.00	70.330	179.060	6366.89	204.32	-61.44	814.43	40°22'35.297"N	104°21'24.541"W	3.64	
6728.00	73.770	177.310	6381.68	249.49	-107.07	815.89	40°22'34.846"N	104°21'24.522"W	7.96	
6775.00	78.170	180.200	6393.08	294.52	-152.64	816.87	40°22'34.396"N	104°21'24.509"W	11.10	
6832.00	87.450	181.310	6400.20	349.98	-209.13	816.12	40°22'33.837"N	104°21'24.519"W	16.39	
6888.00	91.550	182.770	6400.69	404.70	-265.07	814.12	40°22'33.284"N	104°21'24.545"W	7.77	
6979.00	89.910	182.550	6399.53	493.42	-355.97	809.90	40°22'32.386"N	104°21'24.600"W	1.82	



# Actual Wellpath Report

## STATE ANTELOPE U-Y-30HNB AWP

Page 4 of 6



REFERENCE WELLPATH IDENTIFICATION			
Operator	BONANZA CREEK OIL COMPANY	Slot	SLOT#07 STATE ANTELOPE U-Y-30HNB (399'FNL & 842'FEL, SEC.30)
Area	COLORADO	Well	STATE ANTELOPE U-Y-30HNB
Field	WELD COUNTY	Wellbore	STATE ANTELOPE U-Y-30HNB AWP
Facility	SEC.30-T5N-R62W		

WELLPATH DATA (103 stations)										
MD [ft]	Inclination [°]	Azimuth [°]	TVD [ft]	Vert Sect [ft]	North [ft]	East [ft]	Latitude	Longitude	DLS [°/100ft]	Comments
7074.00	89.820	181.740	6399.76	586.23	-450.90	806.34	40°22'31.448"N	104°21'24.645"W	0.86	
7168.00	89.880	179.900	6400.00	678.50	-544.88	805.00	40°22'30.520"N	104°21'24.663"W	1.96	
7263.00	89.350	179.200	6400.64	772.13	-639.88	805.74	40°22'29.581"N	104°21'24.653"W	0.92	
7358.00	89.910	178.490	6401.25	865.95	-734.86	807.66	40°22'28.642"N	104°21'24.629"W	0.95	
7452.00	90.460	178.770	6400.95	958.85	-828.83	809.91	40°22'27.714"N	104°21'24.600"W	0.66	
7547.00	92.130	178.740	6398.80	1052.67	-923.78	811.97	40°22'26.775"N	104°21'24.573"W	1.76	
7642.00	90.460	179.030	6396.66	1146.46	-1018.73	813.82	40°22'25.837"N	104°21'24.549"W	1.78	
7737.00	91.170	179.150	6395.31	1240.21	-1113.71	815.33	40°22'24.899"N	104°21'24.530"W	0.76	
7832.00	90.150	179.230	6394.21	1333.93	-1208.69	816.67	40°22'23.960"N	104°21'24.512"W	1.08	
7928.00	90.250	181.900	6393.88	1428.24	-1304.68	815.72	40°22'23.011"N	104°21'24.525"W	2.78	
8023.00	88.610	181.480	6394.82	1521.21	-1399.63	812.92	40°22'22.073"N	104°21'24.561"W	1.78	
8118.00	89.630	181.710	6396.28	1614.20	-1494.58	810.28	40°22'21.135"N	104°21'24.595"W	1.10	
8213.00	89.690	181.030	6396.84	1707.27	-1589.55	808.01	40°22'20.196"N	104°21'24.624"W	0.72	
8308.00	89.570	180.870	6397.46	1800.49	-1684.54	806.43	40°22'19.258"N	104°21'24.645"W	0.21	
8403.00	90.310	180.780	6397.56	1893.74	-1779.52	805.06	40°22'18.319"N	104°21'24.663"W	0.78	
8498.00	91.020	180.770	6396.45	1987.01	-1874.51	803.78	40°22'17.381"N	104°21'24.679"W	0.75	
8593.00	90.680	180.190	6395.05	2080.36	-1969.49	802.98	40°22'16.442"N	104°21'24.690"W	0.71	
8688.00	89.260	181.060	6395.09	2173.67	-2064.49	801.95	40°22'15.503"N	104°21'24.703"W	1.75	
8783.00	89.720	181.230	6395.94	2266.82	-2159.46	800.05	40°22'14.565"N	104°21'24.728"W	0.52	
8878.00	89.780	180.860	6396.35	2360.00	-2254.45	798.32	40°22'13.626"N	104°21'24.750"W	0.39	
8973.00	89.660	180.260	6396.82	2453.34	-2349.44	797.39	40°22'12.687"N	104°21'24.762"W	0.64	
9068.00	89.260	180.010	6397.71	2546.80	-2444.43	797.16	40°22'11.749"N	104°21'24.765"W	0.50	
9163.00	89.880	179.880	6398.43	2640.32	-2539.43	797.25	40°22'10.810"N	104°21'24.764"W	0.67	
9258.00	90.800	179.890	6397.86	2733.86	-2634.43	797.45	40°22'09.871"N	104°21'24.761"W	0.97	
9354.00	91.940	180.140	6395.57	2828.32	-2730.40	797.42	40°22'08.923"N	104°21'24.762"W	1.22	
9448.00	93.270	180.160	6391.30	2920.70	-2824.30	797.17	40°22'07.995"N	104°21'24.765"W	1.42	
9543.00	92.990	180.900	6386.11	3013.90	-2919.15	796.30	40°22'07.058"N	104°21'24.776"W	0.83	
9638.00	91.290	182.630	6382.56	3106.78	-3014.04	793.37	40°22'06.120"N	104°21'24.814"W	2.55	
9733.00	90.400	182.190	6381.16	3199.49	-3108.94	789.38	40°22'05.182"N	104°21'24.866"W	1.05	
9828.00	89.190	182.990	6381.50	3292.13	-3203.84	785.09	40°22'04.245"N	104°21'24.921"W	1.53	



# Actual Wellpath Report

STATE ANTELOPE U-Y-30HNB AWP

Page 5 of 6



## REFERENCE WELLPATH IDENTIFICATION

Operator	BONANZA CREEK OIL COMPANY	Slot	SLOT#07 STATE ANTELOPE U-Y-30HNB (399'FNL & 842'FEL, SEC.30)
Area	COLORADO	Well	STATE ANTELOPE U-Y-30HNB
Field	WELD COUNTY	Wellbore	STATE ANTELOPE U-Y-30HNB AWB
Facility	SEC.30-T5N-R62W		

## WELLPATH DATA (103 stations)

MD [ft]	Inclination [°]	Azimuth [°]	TVD [ft]	Vert Sect [ft]	North [ft]	East [ft]	Latitude	Longitude	DLS [°/100ft]	Comments
9922.00	88.430	182.670	6383.45	3383.70	-3297.70	780.45	40°22'03.317"N	104°21'24.981"W	0.88	
10017.00	88.860	181.360	6385.70	3476.53	-3392.62	777.11	40°22'02.379"N	104°21'25.024"W	1.45	
10112.00	89.010	180.260	6387.46	3569.78	-3487.59	775.76	40°22'01.441"N	104°21'25.042"W	1.17	
10207.00	89.320	180.430	6388.85	3663.17	-3582.58	775.19	40°22'00.502"N	104°21'25.049"W	0.37	
10303.00	89.570	180.310	6389.78	3757.55	-3678.57	774.57	40°21'59.553"N	104°21'25.057"W	0.29	
10398.00	90.340	180.030	6389.85	3851.00	-3773.57	774.29	40°21'58.615"N	104°21'25.061"W	0.86	
10492.00	90.710	180.190	6388.99	3943.49	-3867.56	774.11	40°21'57.686"N	104°21'25.063"W	0.43	
10587.00	89.600	179.960	6388.74	4036.97	-3962.56	773.99	40°21'56.747"N	104°21'25.065"W	1.19	
10682.00	90.250	179.420	6388.86	4130.56	-4057.56	774.50	40°21'55.808"N	104°21'25.058"W	0.89	
10776.00	88.360	179.100	6390.00	4223.28	-4151.54	775.71	40°21'54.880"N	104°21'25.043"W	2.04	
10870.00	88.280	179.680	6392.76	4315.94	-4245.50	776.71	40°21'53.951"N	104°21'25.030"W	0.62	
10903.00	88.340	179.090	6393.73	4348.46	-4278.48	777.07	40°21'53.625"N	104°21'25.025"W	1.80	Last BHI Survey
10960.00	88.340	179.090	6395.38	4404.70	-4335.45	777.97	40°21'53.062"N	104°21'25.014"W	0.00	Projection to Bit

## HOLE & CASING SECTIONS -

Ref Wellbore: STATE ANTELOPE U-Y-30HNB AWB Ref Wellpath: STATE ANTELOPE U-Y-30HNB AWP

String/Diameter	Start MD [ft]	End MD [ft]	Interval [ft]	Start TVD [ft]	End TVD [ft]	Start N/S [ft]	Start E/W [ft]	End N/S [ft]	End E/W [ft]
9.625in Casing Surface	17.00	470.00	453.00	17.00	470.00	0.00	0.00	-1.13	-0.28
8.75in Open Hole	470.00	6832.00	6362.00	470.00	6400.20	-1.13	-0.28	-209.13	816.12
7in Casing Intermediate	17.00	6864.00	6847.00	17.00	6400.97	0.00	0.00	-241.10	815.15
6.125in Open Hole	6832.00	10903.00	4071.00	6400.20	6393.73	-209.13	816.12	-4278.48	777.07

## WELLPATH COMPOSITION -

Ref Wellbore: STATE ANTELOPE U-Y-30HNB AWB Ref Wellpath: STATE ANTELOPE U-Y-30HNB AWP

Start MD [ft]	End MD [ft]	Positional Uncertainty Model	Log Name/Comment	Wellbore
17.00	6832.00	NaviTrak (MagCorr)	BHI/Navitrak Magcorr MWD 8.75" Hole <17-6832>	STATE ANTELOPE U-Y-30HNB AWB
6832.00	10903.00	NaviTrak (MagCorr)	BHI/Navirak Magcorr MWD 6.125" Hole <6888'-10903>	STATE ANTELOPE U-Y-30HNB AWB
10903.00	10960.00	Blind Drilling (std)	Projection to bit	STATE ANTELOPE U-Y-30HNB AWB



Actual Wellpath Report  
STATE ANTELOPE U-Y-30HNB AWP  
Page 6 of 6



REFERENCE WELLPATH IDENTIFICATION			
Operator	BONANZA CREEK OIL COMPANY	Slot	SLOT#07 STATE ANTELOPE U-Y-30HNB (399'FNL & 842'FEL, SEC.30)
Area	COLORADO	Well	STATE ANTELOPE U-Y-30HNB
Field	WELD COUNTY	Wellbore	STATE ANTELOPE U-Y-30HNB AWB
Facility	SEC.30-T5N-R62W		

WELLPATH COMMENTS				
MD [ft]	Inclination [°]	Azimuth [°]	TVD [ft]	Comment
17.00	0.000	194.050	17.00	Tie on Point
509.00	0.320	194.050	509.00	First BHI Survey
10903.00	88.340	179.090	6393.73	Last BHI Survey
10960.00	88.340	179.090	6395.38	Projection to Bit