

HALLIBURTON

DUAL LATEROLOG  
MICRO-SPHERICALLY  
FOCUSED LOG

COMPANY		KINDER MORGAN CO2 Co. L.P.	
WELL		COW CANYON CS #1	
FIELD/BLOCK		MCELMO DOME	
COUNTY		MONTEZUMA	
STATE		CO	
Permanent Datum		GL	
Log measured from		KB	
Drilling measured from		KB	
Date		06-Mar-14	
Run No.		ONE	
Depth - Driller		8660.00 ft	
Depth - Logger		8659.0 ft	
Bottom - Logged Interval		8657.0 ft	
Top - Logged Interval		8303.0 ft	
Casing - Driller		7.000 in @ 8305.0 ft	
Casing - Logger		8303.0 ft	
Bit Size		6.000 in @	
Type Fluid in Hole		WATER-BASED MUD	
Density		8.6 ppq 29.00 s/qt	
PH		8.70 pH	
Source of Sample		MUD TANK	
Rm @ Meas. Temperature		0.163 ohmm @ 62.50 degF @	
Rmf @ Meas. Temperature		0.17 ohmm @ 65.20 degF @	
Rmc @ Meas. Temperature		N/A @ N/A @	
Source Rmf		MEASURED MEASURED	
Rm @ BHT		0.08 ohmm @ 140.0 degF @	
Time Since Circulation		8.4 hr	
Time on Bottom		06-Mar-14 12:53	
Max. Rec. Temperature		140.0 degF @ 8660.0 ft @	
Equipment		11871076 GL CO	
Recorded By		P. DIMPFL	
Witnessed By		C. SLAUGH	

COMPANY	KINDER MORGAN CO2 Co. L.P.	Other Services:	
WELL	COW CANYON CS #1	RWCH	
FIELD/BLOCK	MCELMO DOME	ACRT	
COUNTY	MONTEZUMA	XRMI	
STATE	CO	SDLT	
		DLLT	
		DSNT	
		ACRT	

API No.	05-083-06709-0000	Elev. 6459.0 ft	Elev. 6482.0 ft
Location	SURFACE HOLE LOCATION: 1350' FNL & 210' FWL	D.F.	6482.0 ft
		G.L.	6459.0 ft

Sect. 27	Twp. 38N	Rge. 19W
----------	----------	----------

LATITUDE: 37.52617	
LONGITUDE: -108.93944	

23.0 ft above perm. Datum
---------------------------

Fold here

Service Ticket No.: 901171182				API Serial No.: 05-083-06709-0000				PGM Version: WL INSITE R3.8.4 (Build 5)							
CHANGE IN MUD TYPE OR ADDITIONAL SAMPLE						RESISTIVITY SCALE CHANGES									
Date		Sample No.				Type Log		Depth		Scale Up Hole		Scale Down Hole			
Depth-Driller															
Type Fluid in Hole															
Density		Viscosity													
Ph		Fluid Loss													
Source of Sample						RESISTIVITY EQUIPMENT DATA									
Rm @ Meas. Temp		@		@		Run No.		Tool Type & No.		Pad Type		Tool Pos.		Other	
Rmf @ Meas. Temp.		@		@		ONE		ACRt		N/A		ECCENT		N/A	
Rmc @ Meas. Temp.		@		@				I - 11585787							
Source Rmf		Rmc						S - 11585797							
Rm @ BHT		@		@		ONE		DLLT-68761499		N/A		CENT		N/A	
Rmf @ BHT		@		@		ONE		MSFL		SLIM RUBBER		CENT		N/A	
Rmc @ BHT		@		@				91143499							
EQUIPMENT DATA															
GAMMA				ACOUSTIC				DENSITY				NEUTRON			
Run No.		ONE		Run No.		ONE		Run No.		ONE		Run No.		ONE	
Serial No.		11005602		Serial No.		U67T68R71L70		Serial No.		10951300		Serial No.		10993888	
Model No.		GTET		Model No.		WSTT-I		Model No.		SDLT-I		Model No.		DSNT-I	
Diameter		3.625"		No. of Cent.		0		Diameter		4.5"		Diameter		3.625"	
Detector Model No.		GTET		Spacing		0.5'		Log Type		GAMMA-GAMMA		Log Type		NEU-THERM	
Type		SCINT						Source Type		Cs137		Source Type		Am241Be	
Length		8"		LSA [Y/N]		Y		Serial No.		5153GW		Serial No.		DSN-388	
Distance to Source		18'		FWDA [Y/N]		Y		Strength		1.5 Ci		Strength		15 Ci	
LOGGING DATA															

GENERAL			GAMMA		ACOUSTIC			DENSITY			NEUTRON			
Run	Depth		Speed	Scale		Scale		Matrix	Scale		Matrix	Scale		Matrix
No.	From	To	ft/min	L	R	L	R		L	R		L	R	
ONE	8659	8303	REC	0 API	150 API	0.3	-0.1	47.5 us/ft	0.3	-0.1	2.71 g/cc	0.3	-0.1	LIME
DIRECTIONAL INFORMATION														
Maximum Deviation @								KOP @						
Remarks: RUN ONE: RWCH-GTET-CSNG--DSNT-SDLT--ACRT-BN RAN IN COMBINATION														
RUN TWO: RWCH-GTET-WSTT-XRMI-BN RAN IN COMBINATION														
RUN:THREE: RWCH-BRIDGE-CR-SP-BRIDGE-BS-GTET-CSNG-DLLT-MSFL-BN RAN IN COMBINATION														
ANNULAR HOLE VOLUME CALCULATED USING 4.5 INCH CASING														
BORHOLE RUGOSITY, TENSION PULLS, AND WASHOUTS MAY EFFECT LOG QUALITY AND REPEATABILITY														
DSN DENCENTRALIZER NOT RUN DUE TO BIT SIZE														
MUD PRESS WAS PERFORMED, HOWEVER, THE MUDCAKE RETRIEVED WAS NOT PLENTIFUL ENOUGH TO MEASURE ACCURATELY DUE TO LIGHTWEIGHT MUD														
TENSION PULL OCCURRED AT TD. PULLED 9000LBS OFF OF BOTTOM. DATA WAS SKEWED DUE TO ACCELERATION. CUSTOMER NOTIFIED														
YOU CREW TODAY: T. RAFF B. CALDWELL								RIG: NABORS M13						
THANK YOU FOR CHOOSING HALLIBURTON ENERGY SERVICES, GRAND JUNCTION, CO (970) 523-3600														
HALLIBURTON DOES NOT GUARANTEE THE ACCURACY OF ANY INTERPRETATION OF THE LOG DATA, CONVERSION OF LOG DATA TO PHYSICAL ROCK PARAMETERS OR RECOMMENDATIONS WHICH MAY BE GIVEN BY HALLIBURTON PERSONNEL OR WHICH APPEAR ON THE LOG OR IN ANY OTHER FORM. ANY USER OF SUCH DATA, INTERPRETATIONS, CONVERSIONS, OR RECOMMENDATIONS AGREES THAT HALLIBURTON IS NOT RESPONSIBLE EXCEPT WHERE DUE TO GROSS NEGLIGENCE OR WILLFUL MISCONDUCT, FOR ANY LOSS, DAMAGES, OR EXPENSES RESULTING FROM THE USE THEREOF.														
HALLIBURTON														

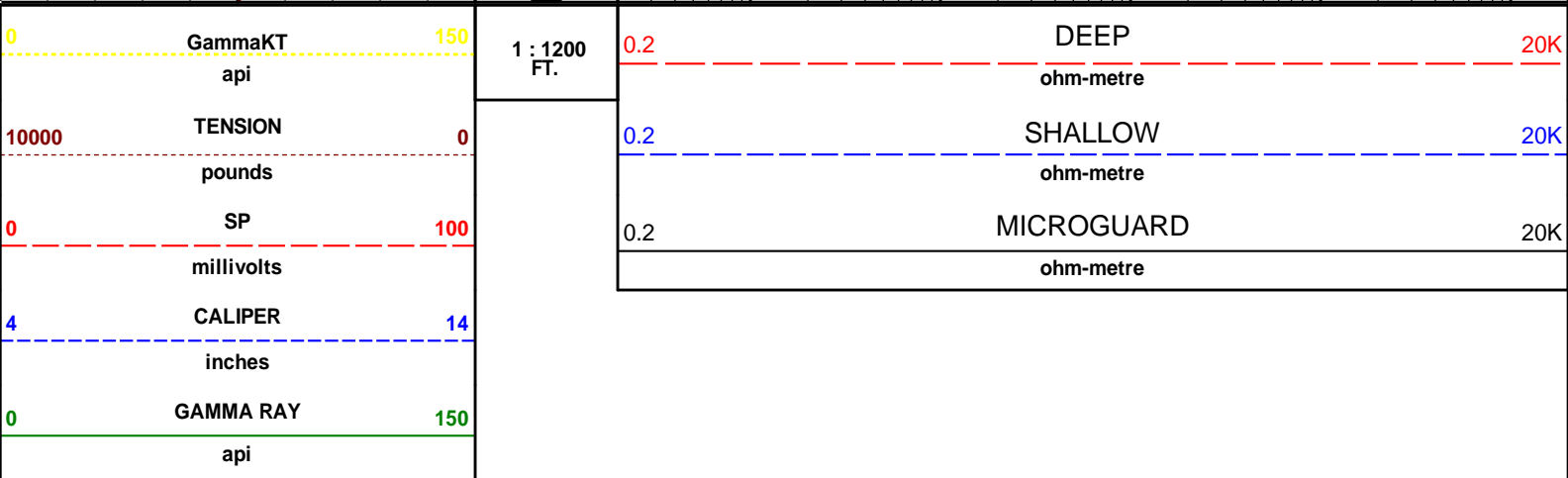
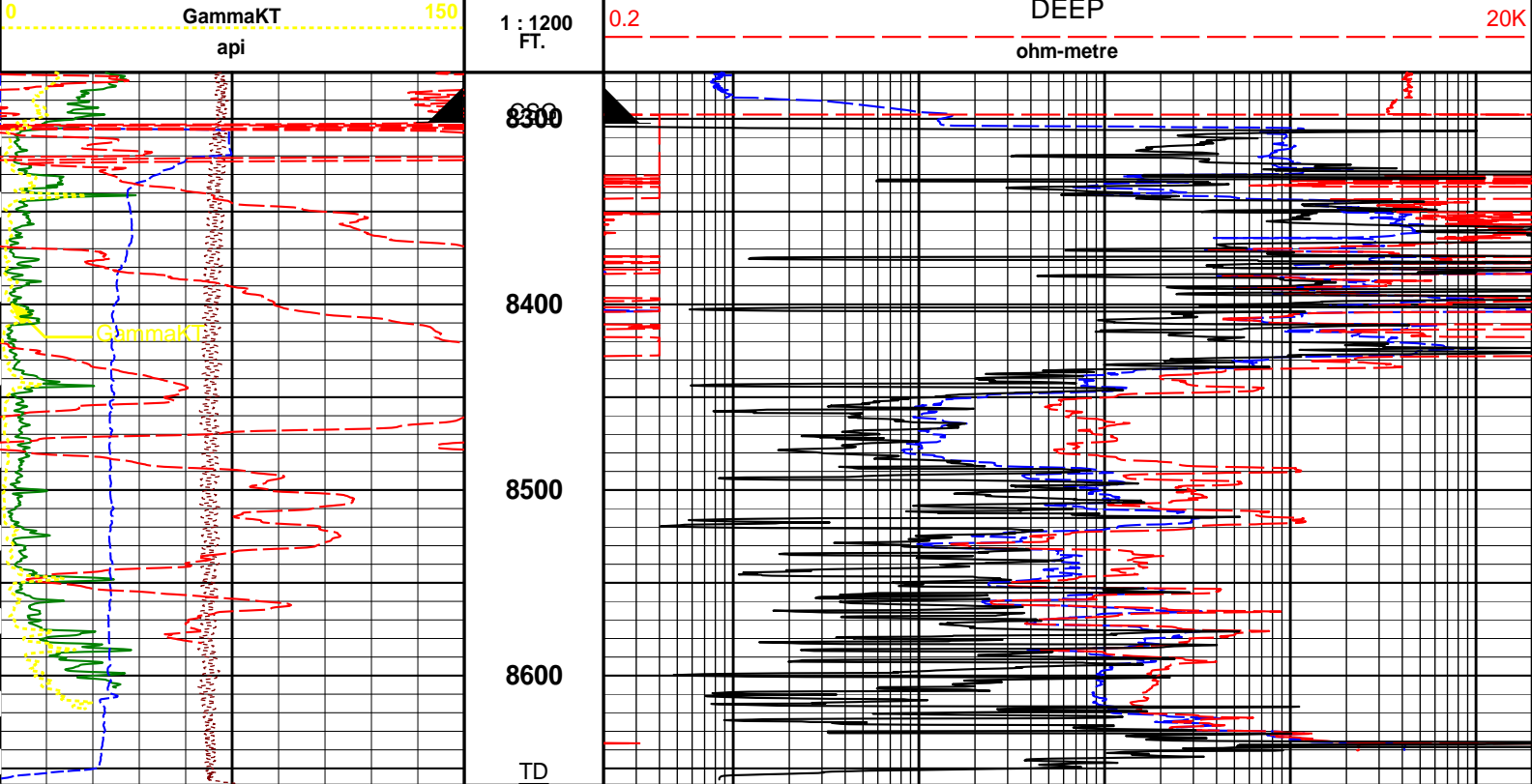
HALLIBURTON

PARAMETERS REPORT

Depth (ft)	Tool Name	Mnemonic	Description	Value	Units
TOP					
	SHARED	BS	Bit Size	6.000	in
	SHARED	UBS	Use Bit Size instead of Caliper for all applications.	No	
	SHARED	MDBS	Mud Base	Water	
	SHARED	MDWT	Borehole Fluid Weight	8.600	ppg
	SHARED	WAGT	Weighting Agent	Natural	
	SHARED	BSAL	Borehole salinity	25000.00	ppm
	SHARED	FSAL	Formation Salinity NaCl	0.00	ppm
	SHARED	KPCT	Percent K in Mud by Weight?	0.00	%
	SHARED	RMUD	Mud Resistivity	0.163	ohmm
	SHARED	TRM	Temperature of Mud	62.5	degF
	SHARED	CSD	Logging Interval is Cased?	No	
	SHARED	ICOD	AHV Casing OD	4.500	in
	SHARED	ST	Surface Temperature	50.0	degF
	SHARED	TD	Total Well Depth	8659.00	ft
	SHARED	BHT	Bottom Hole Temperature	140.0	degF
	SHARED	SVTM	Navigation and Survey Master Tool	NONE	
	SHARED	AZTM	High Res Z Accelerometer Master Tool	GTET	
	SHARED	TEMM	Temperature Master Tool	NONE	
	SHARED	BHSM	Borehole Size Master Tool	NONE	
	Rwa / CrossPlot	XPOK	Process Crossplot?	Yes	
	Rwa / CrossPlot	FCHO	Select Source of F	Automatic	
	Rwa /	AEAC	Archie A factor	0.6200	

CrossPlot	AFAC	Archie A factor	0.6200	
Rwa / CrossPlot	MFAC	Archie M factor	2.1500	
Rwa / CrossPlot	RMFR	Rmf Reference	0.10	ohmm
Rwa / CrossPlot	TMFR	Rmf Ref Temp	75.00	degF
Rwa / CrossPlot	RWA	Resistivity of Formation Water	0.05	ohmm
Rwa / CrossPlot	ADP	Use Air Porosity to calculate CrossplotPhi	No	
GTET	GROK	Process Gamma Ray?	Yes	
GTET	GRSO	Gamma Tool Standoff	0.250	in
GTET	GEOK	Process Gamma Ray EVR?	No	
GTET	TPOS	Tool Position for Gamma Ray Tools.	Eccentered	
CSNG	CGOK	Process CSNG Data?	No	
CSNG	CENT	Is Tool Centralized?	No	
CSNG	GBOK	Gamma Enviromental Corrections?	Yes	
CSNG	BARF	Barite Correction Factor	1.00	
CSNG	ORDG	Use Fixed Gain	No	
CSNG	ORDO	Use Fixed Offset	No	
CSNG	ORDR	Use Fixed Resolution Degradation Factor	No	
DLLT	DLOK	Process Dual Laterolog?	Yes	
DLLT	DBOK	Process Dual Laterolog Borehole Corrections?	Yes	
DLLT	SBHD	Select Borehole Diam Source	Caliper	
DLLT	TPOS	Tool Position	Standoff	
DLLT	TMPC	Temperature Correction Type	Tool Value	
DLLT	DLOK	Calculate Dual Laterolog DI?	Yes	
MSFL	DLOK	Process MSFL?	Yes	
MSFL	SLPD	Use MSFL Slim Hole Pad?	Yes	
MSFL	SPDF	MSFL Slim Hole Pad K Factor	1.750	
MSFL	CLOK	Process Caliper Outputs?	Yes	
BOTTOM				

Data: KIND\_MOR\_CS\_10003 DLLT003 06-Mar-14 21:00 Up @8662.8f
Date: 06-Mar-14 21:23:32

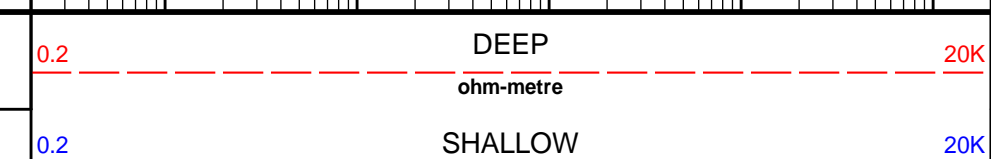
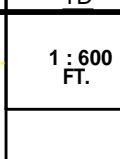
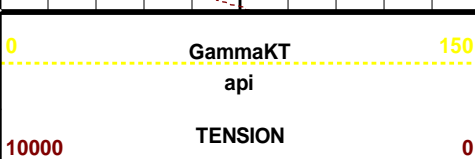
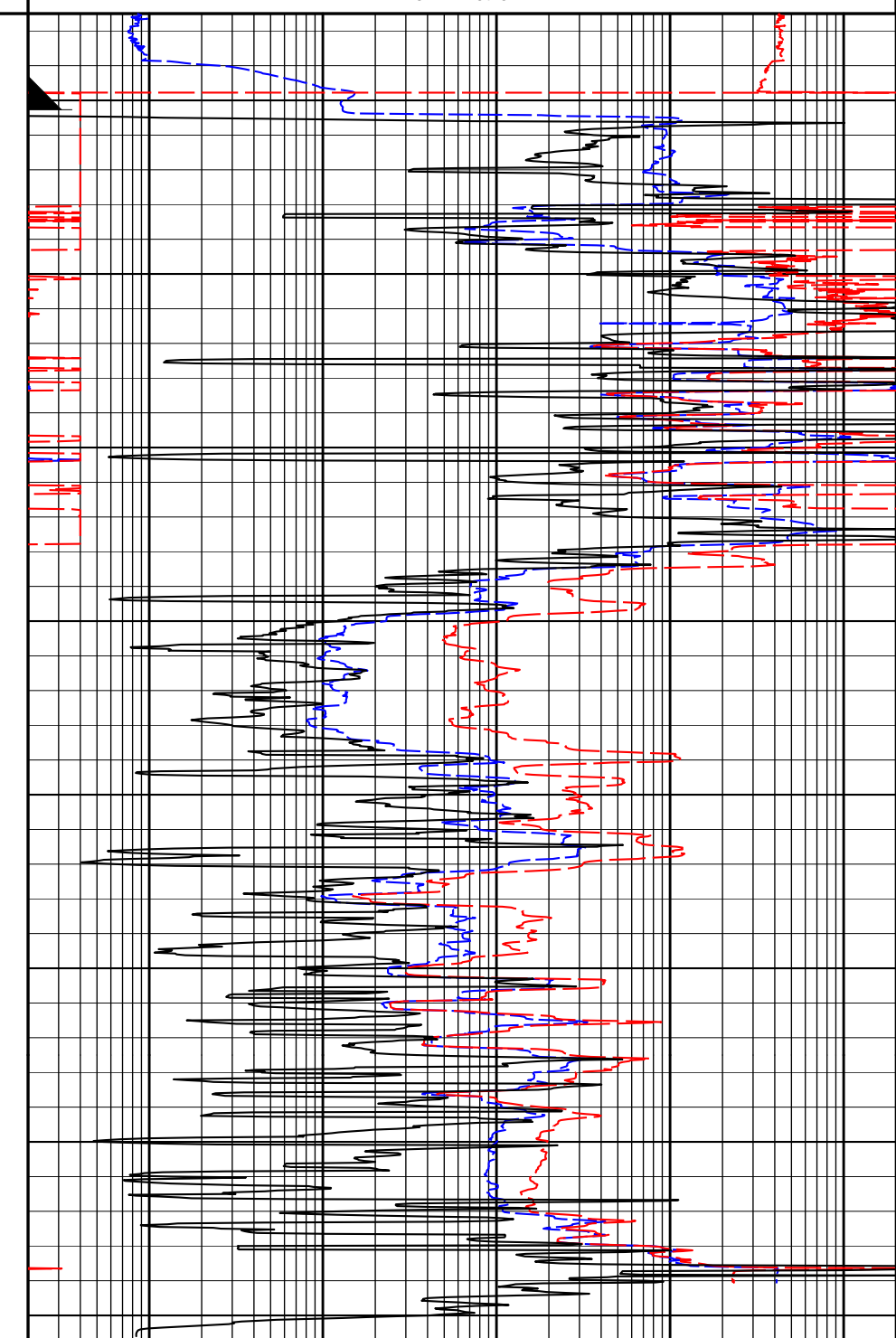
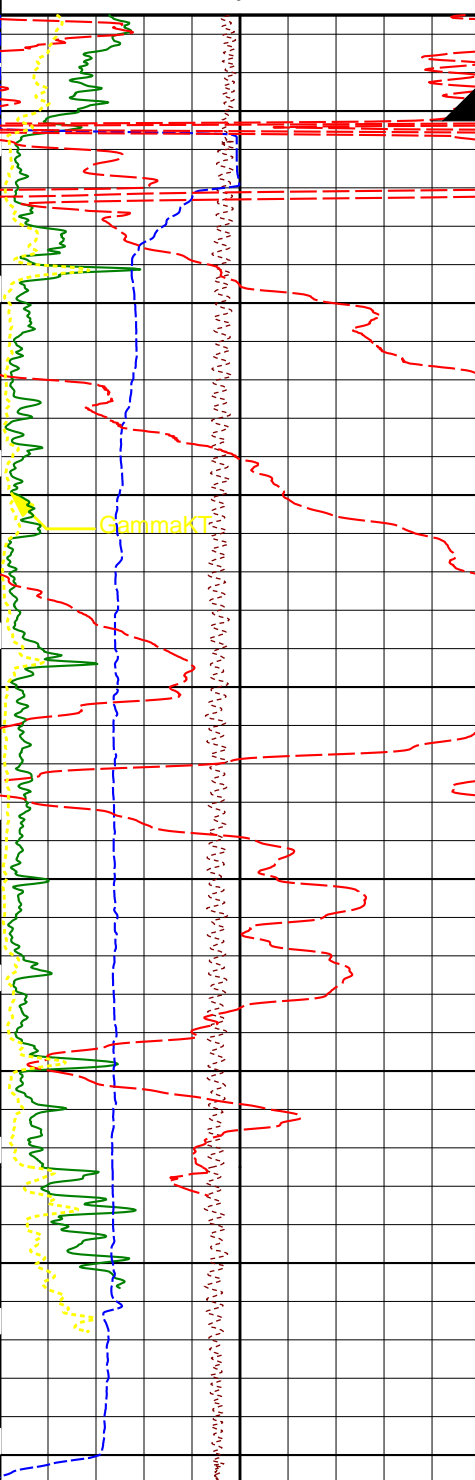
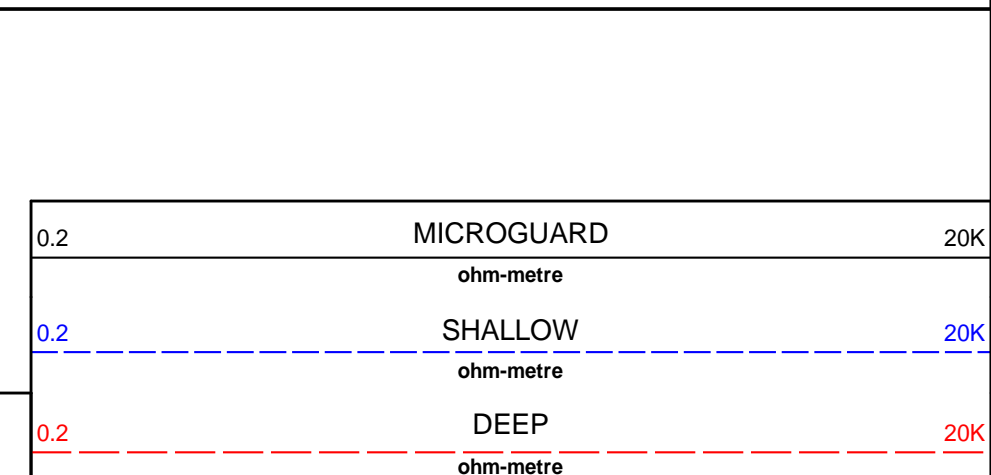
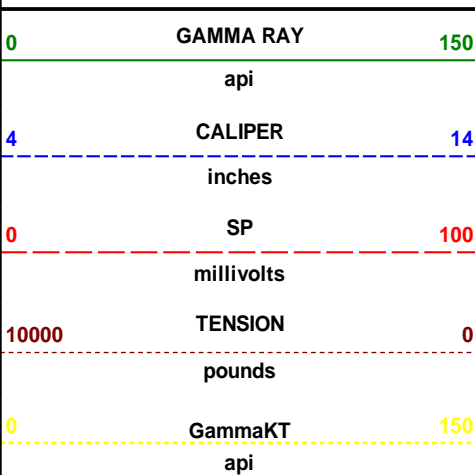


<div>HALLIBURTON</div>	<div>Plot Time: 06-Mar-14 21:33:14</div> <div>Plot Range: 8275 ft to 8659 ft</div> <div>Data: KIND_MOR_CS_1\Well Based\*</div> <div>Plot File: \\DLLTV_NEWFIELD_DLL_1"</div>
------------------------	--

<div>MAIN PASS 2" = 100'</div>
--------------------------------

<div>HALLIBURTON</div>	<div>Plot Time: 06-Mar-14 21:33:14</div> <div>Plot Range: 8275 ft to 8659 ft</div> <div>Data: KIND_MOR_CS_1\Well Based\*</div> <div>Plot File: \\DLLTV_NEWFIELD_DLL_2"</div>
------------------------	--

<div>MAIN PASS 2" = 100'</div>
--------------------------------



	pounds	
0	SP	100
	millivolts	
4	CALIPER	14
	inches	
0	GAMMA RAY	150
	api	

	ohm-metre	
0.2	MICROGUARD	20K
	ohm-metre	

**HALLIBURTON** Plot Time: 06-Mar-14 21:33:16  
 Plot Range: 8275 ft to 8659 ft  
 Data: KIND\_MOR\_CS\_1\Well Based\\*\  
 Plot File: \DLLTV\_NEWFIELD\_DLL\_2"

**MAIN PASS 2" = 100'**

**HALLIBURTON** Plot Time: 06-Mar-14 21:33:16  
 Plot Range: 8275 ft to 8659 ft  
 Data: KIND\_MOR\_CS\_1\Well Based\\*\  
 Plot File: \DLLTV\_NEWFIELD\_DLL\_M

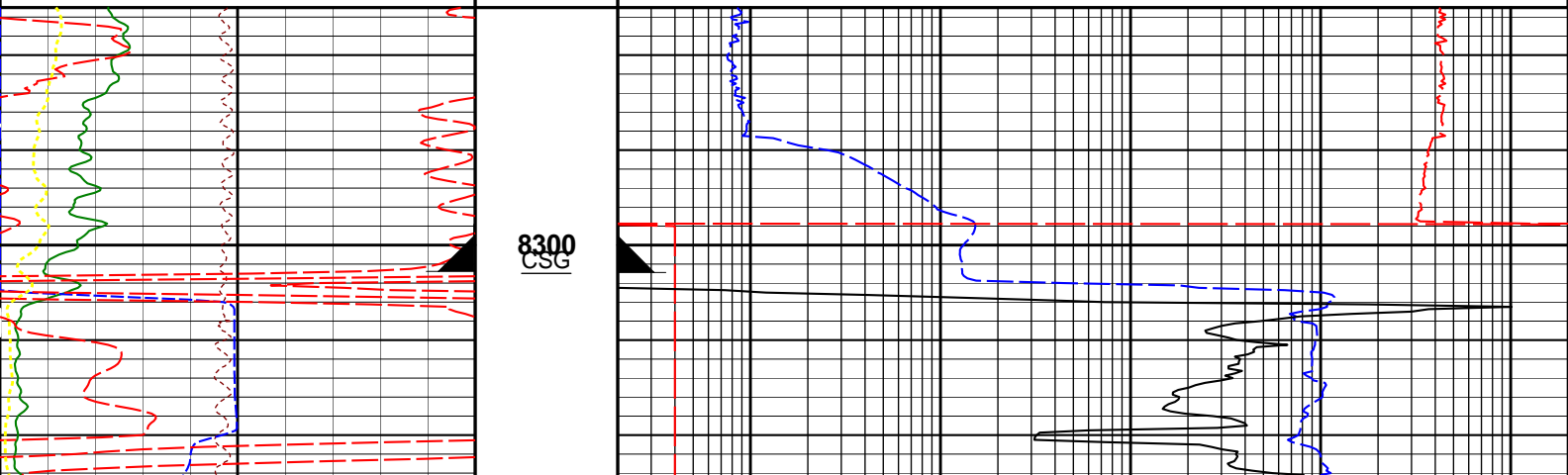
**MAIN PASS 5" = 100'**

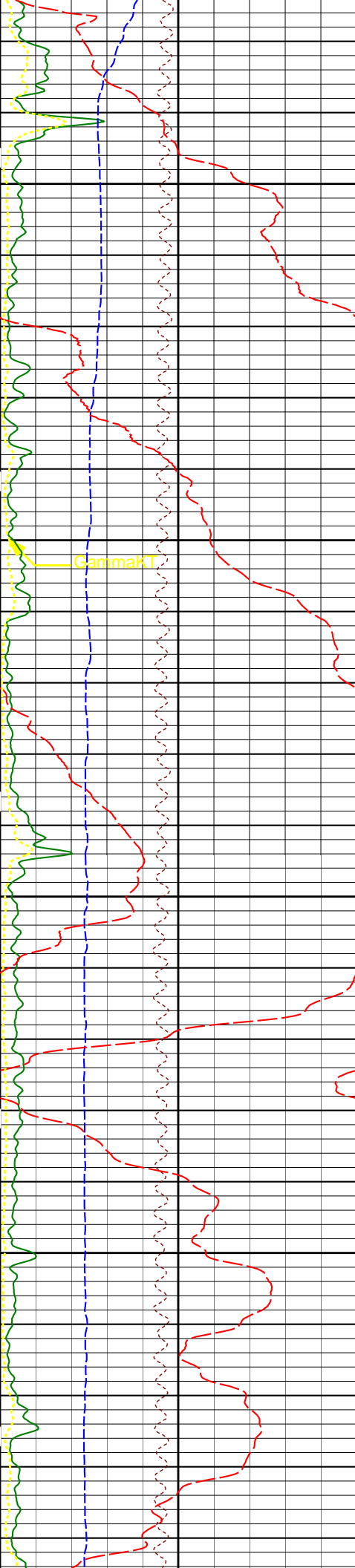
0	GAMMA RAY	150
	api	
4	CALIPER	14
	inches	
0	SP	100
	millivolts	
10000	TENSION	0
	pounds	
0	GammaKT	150
	api	

0.2	MICROGUARD	20K
	ohm-metre	
0.2	SHALLOW	20K
	ohm-metre	
0.2	DEEP	20K
	ohm-metre	

1 : 240  
FT.

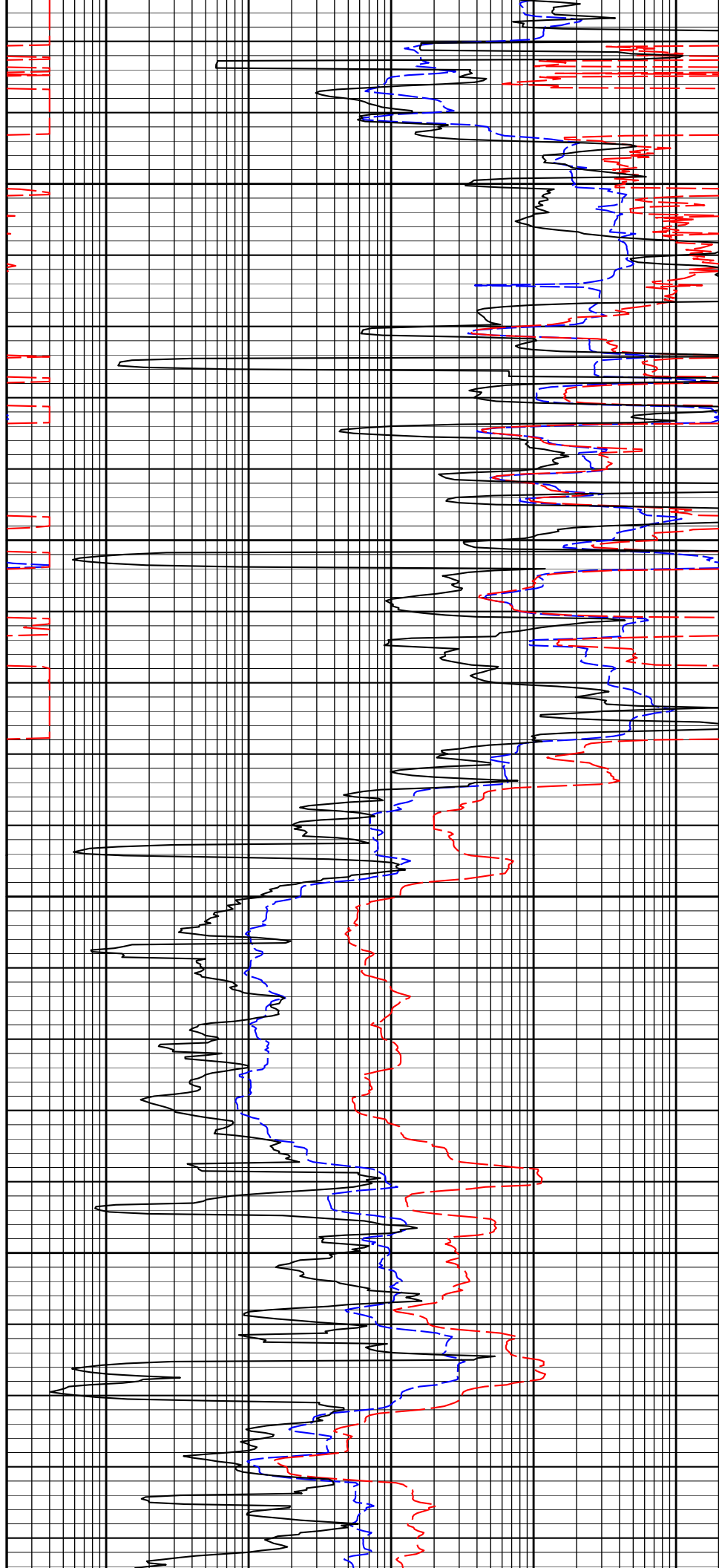
8300  
CSG

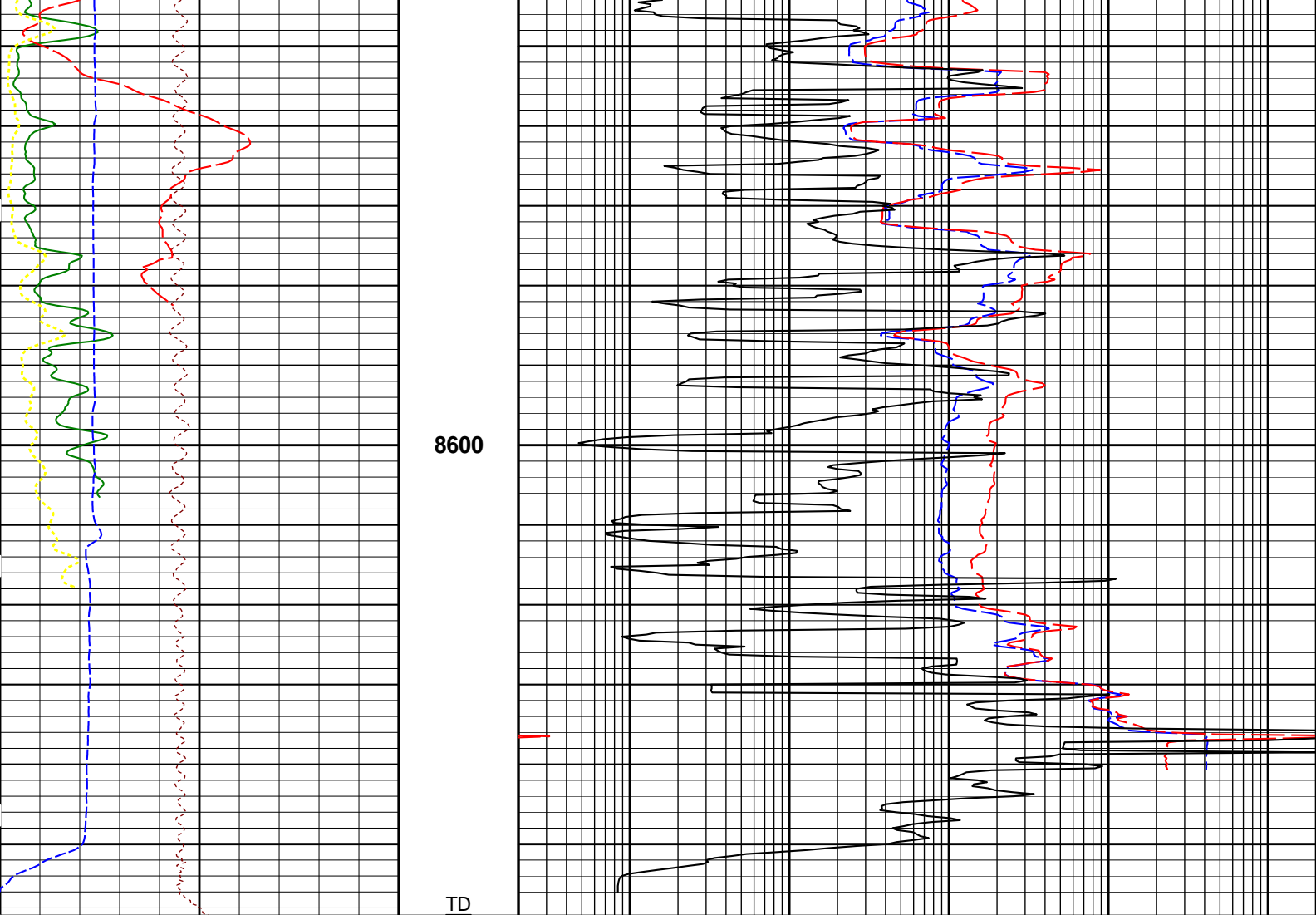




8400

8500





0	GammaKT	150	1 : 240	0.2	DEEP	20K
	api		FT.		ohm-metre	
10000	TENSION	0		0.2	SHALLOW	20K
	pounds				ohm-metre	
0	SP	100		0.2	MICROGUARD	20K
	millivolts				ohm-metre	
4	CALIPER	14				
	inches					
0	GAMMA RAY	150				
	api					

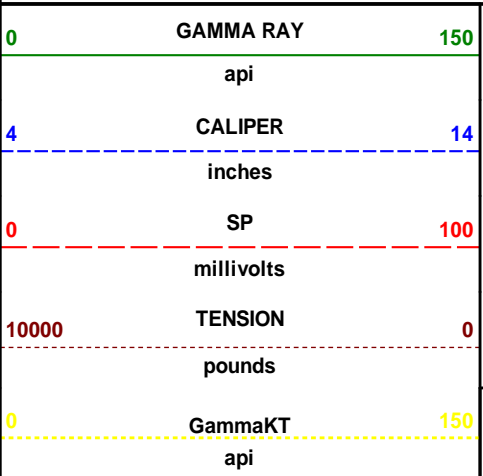
**HALLIBURTON** Plot Time: 06-Mar-14 21:33:18  
Plot Range: 8275 ft to 8659 ft  
Data: KIND\_MOR\_CS\_1\Well Based\1  
Plot File: \DLLTV\_NEWFIELD\_DLL\_M

**MAIN PASS 5" = 100'**

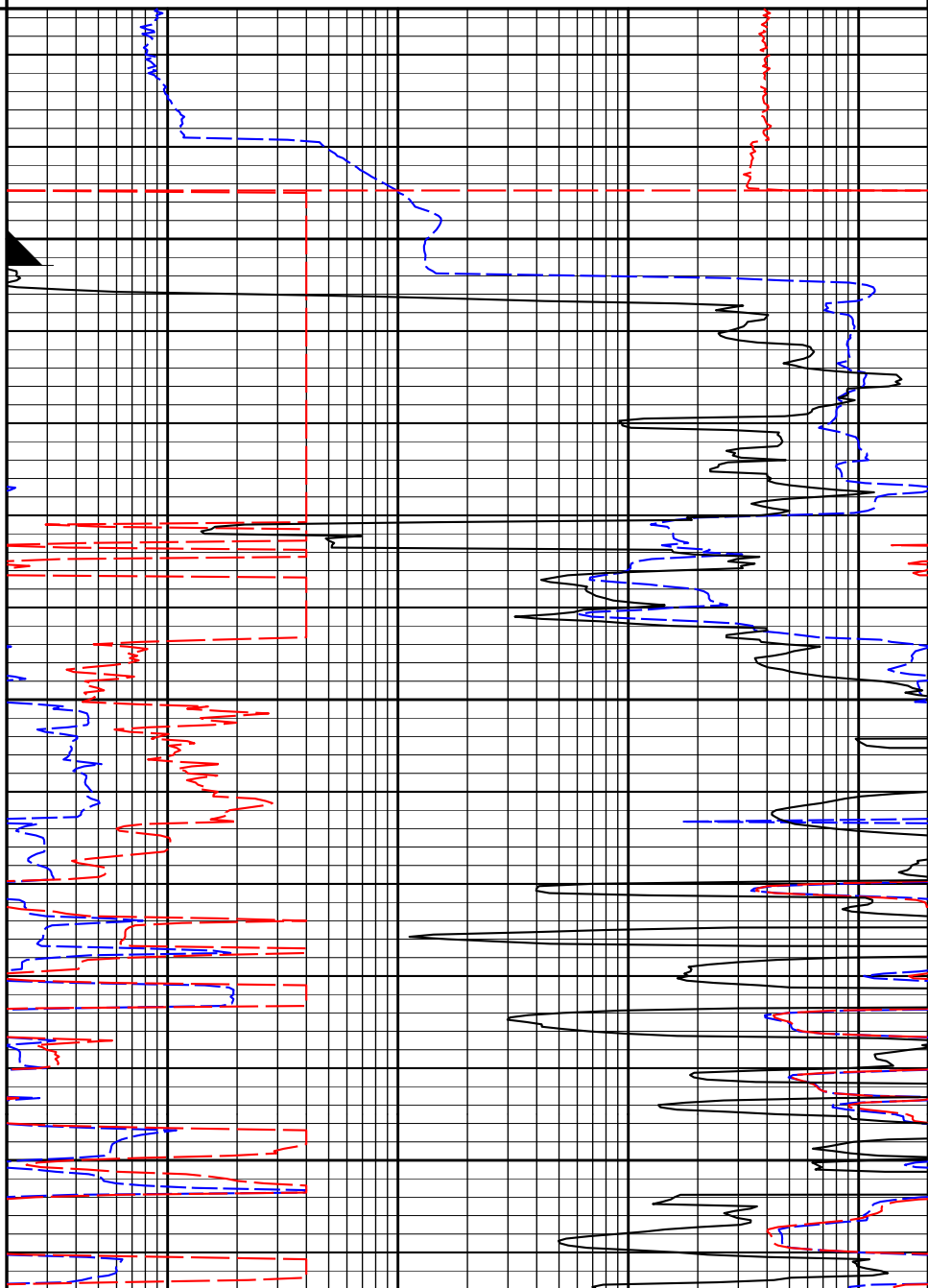
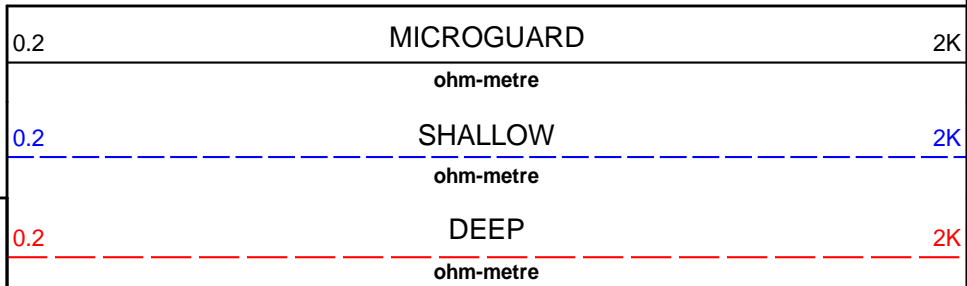
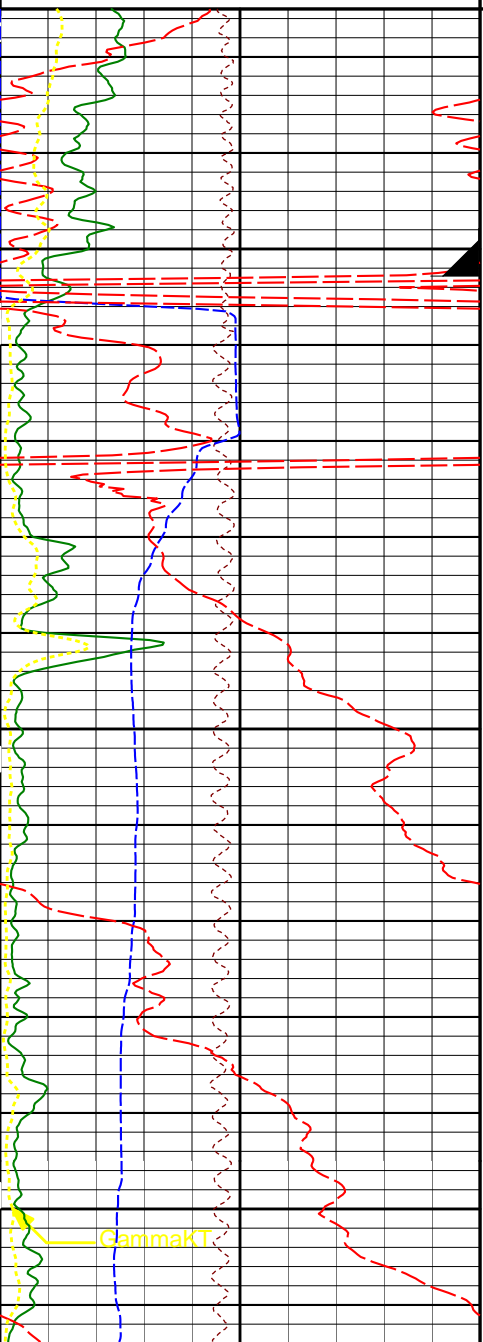
**HALLIBURTON** Plot Time: 06-Mar-14 21:33:18  
Plot Range: 8275 ft to 8658.42 ft  
Data: KIND\_MOR\_CS\_1\Well Based\1  
Plot File: \DLLTV\_NEWFIELD\_DLL\_M

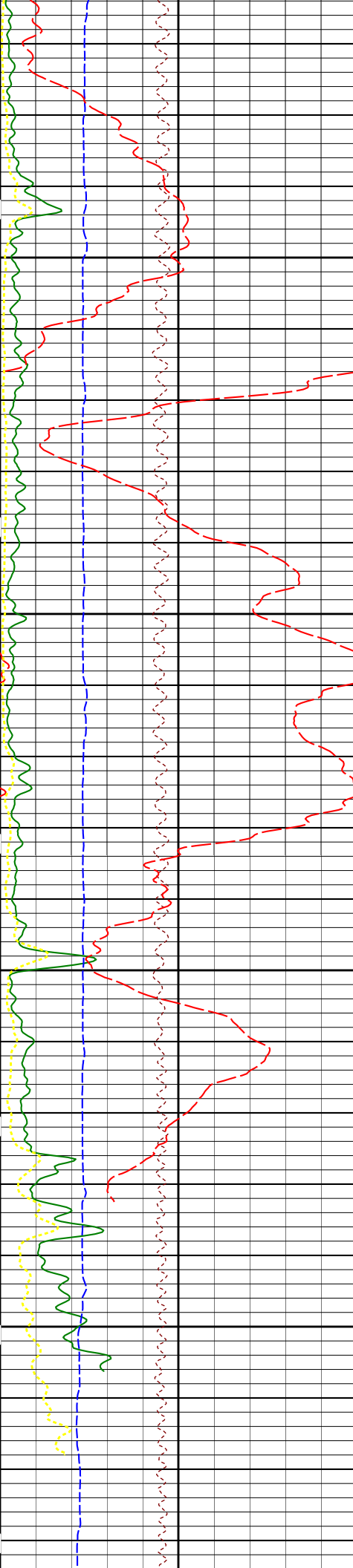


REPEAT PASS 5" = 100'



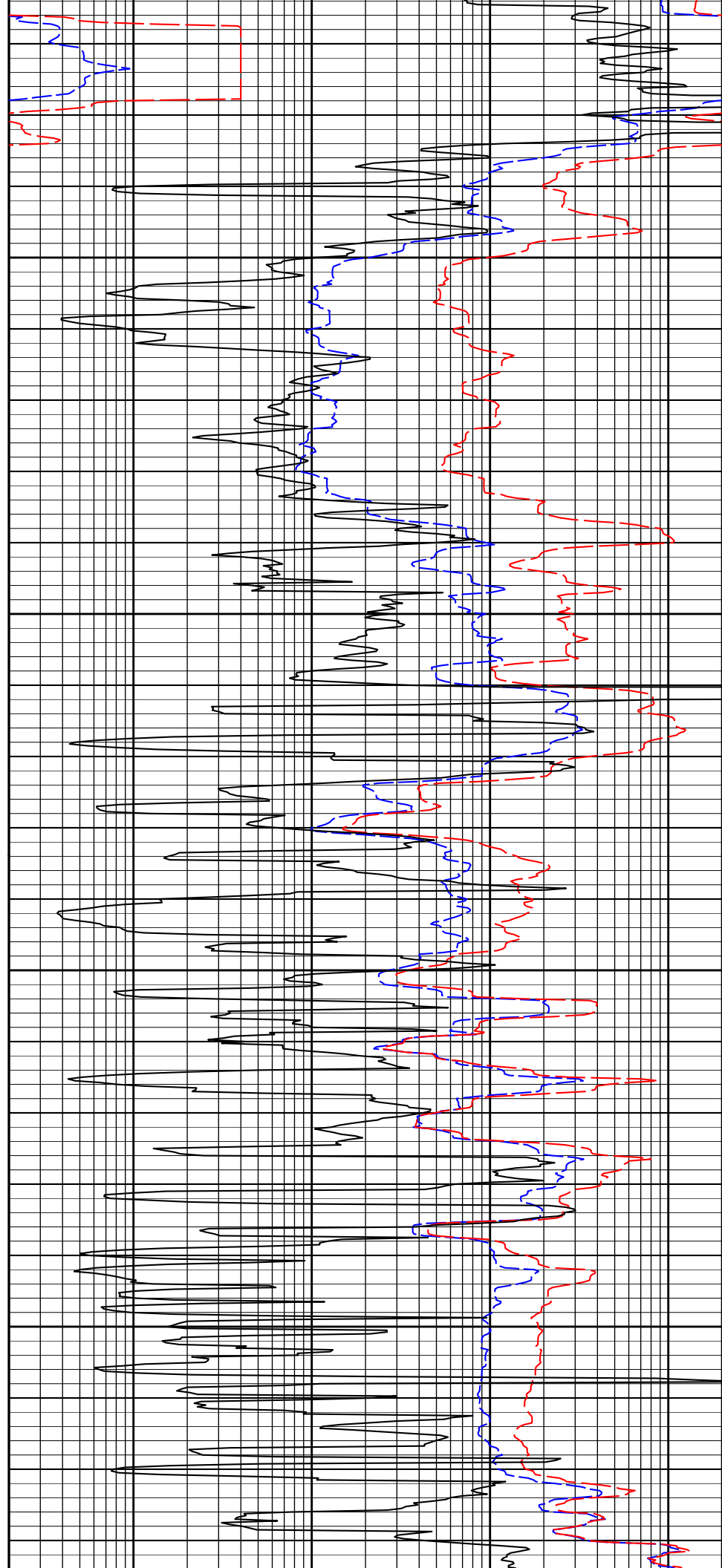
1 : 240  
FT.

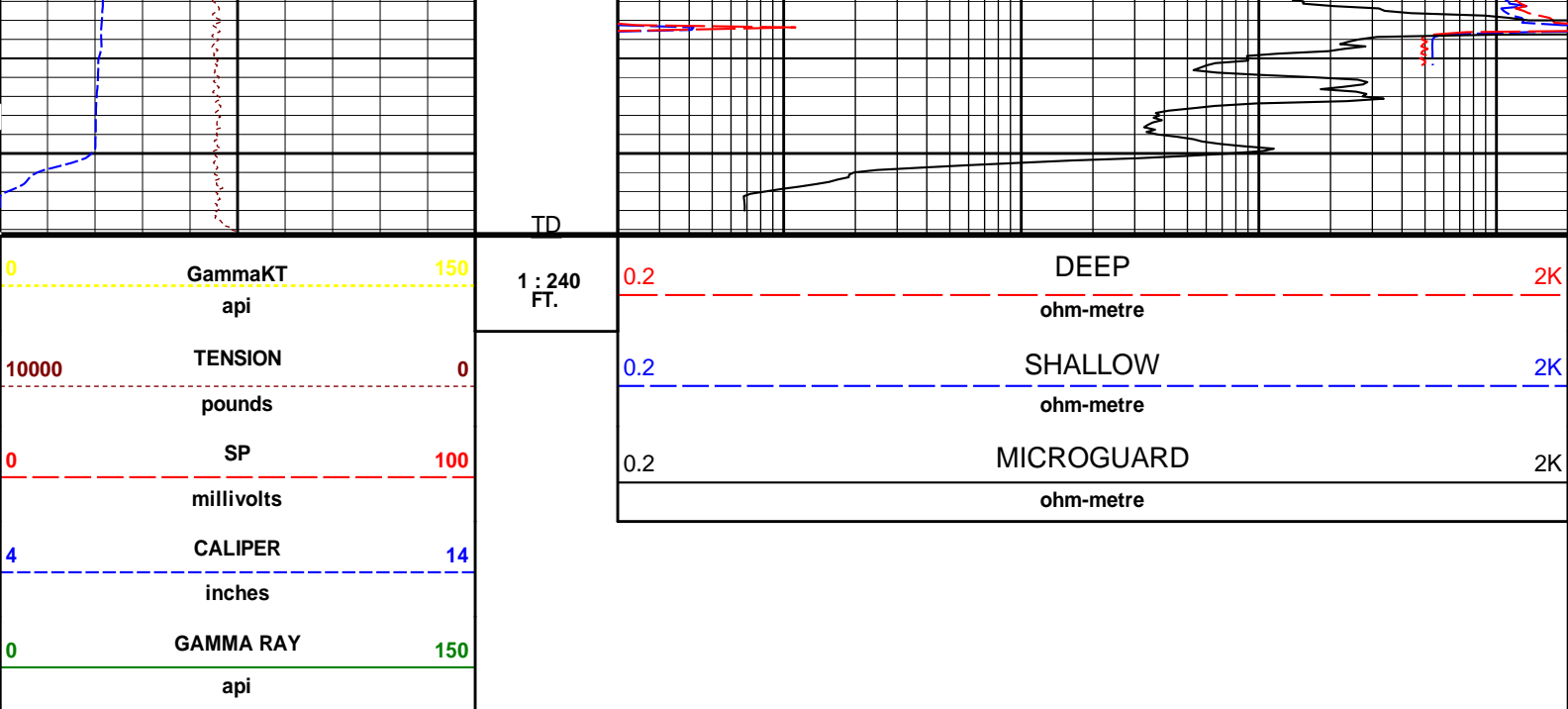




8500

8600





**HALLIBURTON** Plot Time: 06-Mar-14 21:33:20  
Plot Range: 8275 ft to 8658.42 ft  
Data: KIND\_MOR\_CS\_1\Well Based\\*\  
Plot File: \DLLTV\_NEWFIELD\_DLL\_R

**REPEAT PASS 5" = 100'**

**HALLIBURTON**

**CALIBRATION REPORT**

NATURAL GAMMA RAY TOOL SHOP CALIBRATION			
Tool Name:	GTET - 11005602	Reference Calibration Date:	06-Mar-14 09:59:43
Engineer:	P. DIMPFL	Calibration Date:	06-Mar-14 10:04:33
Software Version:	WL INSITE R3.8.4 (Build 5)	Calibration Version:	1

Calibrator Source S/N: MP051807-04			
Calibrator API Reference:239.00 api			
Equivalent Calibrator API Reference:243.2 api			
Measurement	Measured	Calibrated	Units
Background	21.3	21.2	api
Background + Calibrator	265.1	264.4	api
Calibrator	243.8	243.2	api

NATURAL GAMMA RAY TOOL FIELD CALIBRATION			
Tool Name:	GTET - 11005602	Reference Calibration Date:	06-Mar-14 10:04:33
Engineer:	P. DIMPFL	Calibration Date:	06-Mar-14 10:16:22
Software Version:	WL INSITE R3.8.4 (Build 5)	Calibration Version:	1

Calibrator Source S/N: MP051807-04			
Calibrator API Reference:239.00 api			
Equivalent Calibrator API Reference:243.2 api			
Field Verification	Shop	Field	Units

Field Verification		Shop	Field	Units	
Background		21.2	22.3	api	
Background + Calibrator		264.4	261.4	api	
Calibrator		243.2	239.1	api	
Shop		Field	Difference	Tolerance	
243.2		239.1	4.1	+/- 9.00	

DUAL LATEROLOG SHOP CALIBRATION					
Tool Name:	DLLT - 68761499		Reference Calibration Date:	04-Feb-14 10:18:24	
Engineer:	K. NORMAND		Calibration Date:	04-Mar-14 09:40:20	
Software Version:	WL INSITE R3.8.4 (Build 5)		Calibration Version:	1	
Measurement	Deep Measured	Deep Calibrated	Shallow Measured	Shallow Calibrated	Units
External Cal Point #1	1.02	1.04	1.01	1.00	ohmm
External Cal Point #2	119.49	119.47	99.78	99.63	ohmm
External Cal Point #3	1535.16	1541.79	1020.87	1019.96	ohmm
External Check Point	1536.35	1542.99	1020.64	1019.73	ohmm
Internal Reference	15.74	15.74	20.11	20.08	ohmm

DUAL LATEROLOG FIELD CALIBRATION					
Tool Name:	DLLT - 68761499		Reference Calibration Date:	04-Mar-14 09:40:20	
Engineer:	P. DIMPFL		Calibration Date:	06-Mar-14 19:48:33	
Software Version:	WL INSITE R3.8.4 (Build 5)		Calibration Version:	1	
Measurement	Deep Shop	Deep Field	Shallow Shop	Shallow Field	Units
Internal Reference	15.74	15.71	20.08	20.07	ohmm
PASS/FAIL SUMMARY					
Measurement	Difference		Tolerance	Pass/Fail	
Internal Deep	0.03		+/- 0.8	Passed	
Internal Shallow	0.01		+/- 0.8	Passed	

DUAL LATEROLOG POST CALIBRATION					
Tool Name:	DLLT - 68761499		Reference Calibration Date:	06-Mar-14 19:48:33	
Engineer:	P. DIMPFL		Calibration Date:	06-Mar-14 21:26:03	
Software Version:	WL INSITE R3.8.4 (Build 5)		Calibration Version:	1	
Measurement	Deep Field	Deep Post	Shallow Field	Shallow Post	Units
Internal Reference	15.71	15.80	20.07	20.08	ohmm
PASS/FAIL SUMMARY					
Measurement	Difference		Tolerance	Pass/Fail	
Internal Deep	0.09		+/- 0.8	Passed	
Internal Shallow	0.01		+/- 0.8	Passed	

MICRO SPHERICALLY FOCUSED LOG SHOP CALIBRATION					
Tool Name:	MSFL - 91143499		Reference Calibration Date:	04-Feb-14 14:49:44	
Engineer:	K. NORMAND		Calibration Date:	04-Mar-14 09:47:31	
Software Version:	WL INSITE R3.8.4 (Build 5)		Calibration Version:	1	
Measurement	Measured	Calibrated	Units		
External Cal Point #1	0.20	0.20	ohmm		

External Cal Point #2		18.73	20.00	ohmm	
External Cal Point #3		2042.63	2000.00	ohmm	
Internal Reference		18.60	19.90	ohmm	
MICRO SPHERICALLY FOCUSED LOG FIELD CALIBRATION					
Tool Name:	MSFL - 91143499		Reference Calibration Date:	04-Mar-14 09:47:31	
Engineer:	P. DIMPFL		Calibration Date:	06-Mar-14 19:48:57	
Software Version:	WL INSITE R3.8.4 (Build 5)		Calibration Version:	1	
Measurement	Shop	Field	Change	Control Limit On	Units
Internal Reference	19.90	19.90	0.000	0.800	ohmm
PASS/FAIL SUMMARY					
Internal Reference:			Passed		
MICRO SPHERICALLY FOCUSED LOG POST CALIBRATION					
Tool Name:	MSFL - 91143499		Reference Calibration Date:	06-Mar-14 19:48:57	
Engineer:	P. DIMPFL		Calibration Date:	06-Mar-14 21:24:02	
Software Version:	WL INSITE R3.8.4 (Build 5)		Calibration Version:	1	
Measurement	Field	Post	Change	Control Limit On	Units
Internal Reference	19.90	19.90	-0.001	0.800	ohmm
PASS/FAIL SUMMARY					
Internal Reference:			Passed		
CALIPER SHOP CALIBRATION					
Tool Name:	MSFL - 91143499		Reference Calibration Date:	04-Feb-14 10:31:45	
Engineer:	K. NORMAND		Calibration Date:	04-Mar-14 09:52:19	
Software Version:	WL INSITE R3.8.4 (Build 5)		Calibration Version:	1	
CALIBRATION RINGS AND INTERNAL					
Measurement	Current Reading (Previous Coeff.)		Calibrated (New Coeff.)	Change	
RING DIAMETER:					
Ring #1 (in)	12.05		8.25	3.8000	
Ring #2 (in)	17.74		15.00	2.7400	
Hi/Lo Internal:					
Lo Internal (in)	4.38		-0.83	5.2100	
Hi Internal (in)	19.25		16.79	2.4600	
CALIPER FIELD CALIBRATION					
Tool Name:	MSFL - 91143499		Reference Calibration Date:	04-Mar-14 09:52:19	
Engineer:	P. DIMPFL		Calibration Date:	06-Mar-14 19:49:34	
Software Version:	WL INSITE R3.8.4 (Build 5)		Calibration Version:	1	
MEASURED CALIPER VALUES					
Measurement	Shop	Field	Change	Control Limit On New Value	
Lo Internal (in)	-0.83	-0.83	0.000	+/- 0.500	
Hi Internal (in)	16.79	16.78	0.007	+/- 0.500	
PASS/FAIL SUMMARY					
Lo Internal Check:			Passed		
Hi Internal Check:			Passed		

CALIPER POST CALIBRATION

Tool Name: MSFL - 91143499

Reference Calibration Date: 06-Mar-14 19:49:34

Engineer: P. DIMPFL

Calibration Date: 06-Mar-14 21:25:05

Software Version: WL INSITE R3.8.4 (Build 5)

Calibration Version: 1

MEASURED CALIPER VALUES				
Measurement	Field	Post	Change	Control Limit On New Value
Lo Internal (in)	-0.83	-0.85	-0.018	+/- 0.500
Hi Internal (in)	16.78	16.80	0.018	+/- 0.500

PASS/FAIL SUMMARY	
Lo Internal Check:	Passed
Hi Internal Check:	Passed

CALIBRATION SUMMARY

Sensor	Shop	Field	Post	Difference	Tolerance	Units
GTET-11005602						
Gamma Ray Calibrator	243.2	239.1	-----	4.1	+/- 9.00	api
DLLT-68761499						
Deep Internal Ref.	15.74	15.71	15.80	-0.09	+/- 0.8	ohmm
Shallow Internal Ref.	20.08	20.07	20.08	-0.01	+/- 0.8	ohmm
MSFL-91143499						
MSFL Internal Ref.	19.90	19.90	19.90	0.00	+/- 0.800	ohmm
Caliper Lo. Internal	-0.83	-0.83	-0.85	0.02	+/- 0.500	in
Caliper Hi. Internal	16.79	16.78	16.80	-0.02	+/- 0.500	in

Data: KIND\_MOR\_CS\_1\0003 DLLTIDLE

Date: 06-Mar-14 21:26:59

HALLIBURTON

CUSTOMER EVENT LOG


Event Type	Time & Date	Depth (ft)	Event Description
	06-Mar-14 20:04:11	2166.75	Logging 001 06-Mar-14 20:04 Dn @2166.8f
	06-Mar-14 20:35:38	7990.01	Halting 001 06-Mar-14 20:04 Dn @2166.8f
	06-Mar-14 20:42:00	8662.50	Logging 002 06-Mar-14 20:41 Up @8662.5f
	06-Mar-14 20:55:06	8246.55	Halting 002 06-Mar-14 20:41 Up @8662.5f
	06-Mar-14 21:00:27	8662.75	Logging 003 06-Mar-14 21:00 Up @8662.8f
	06-Mar-14 21:14:54	8187.18	Halting 003 06-Mar-14 21:00 Up @8662.8f

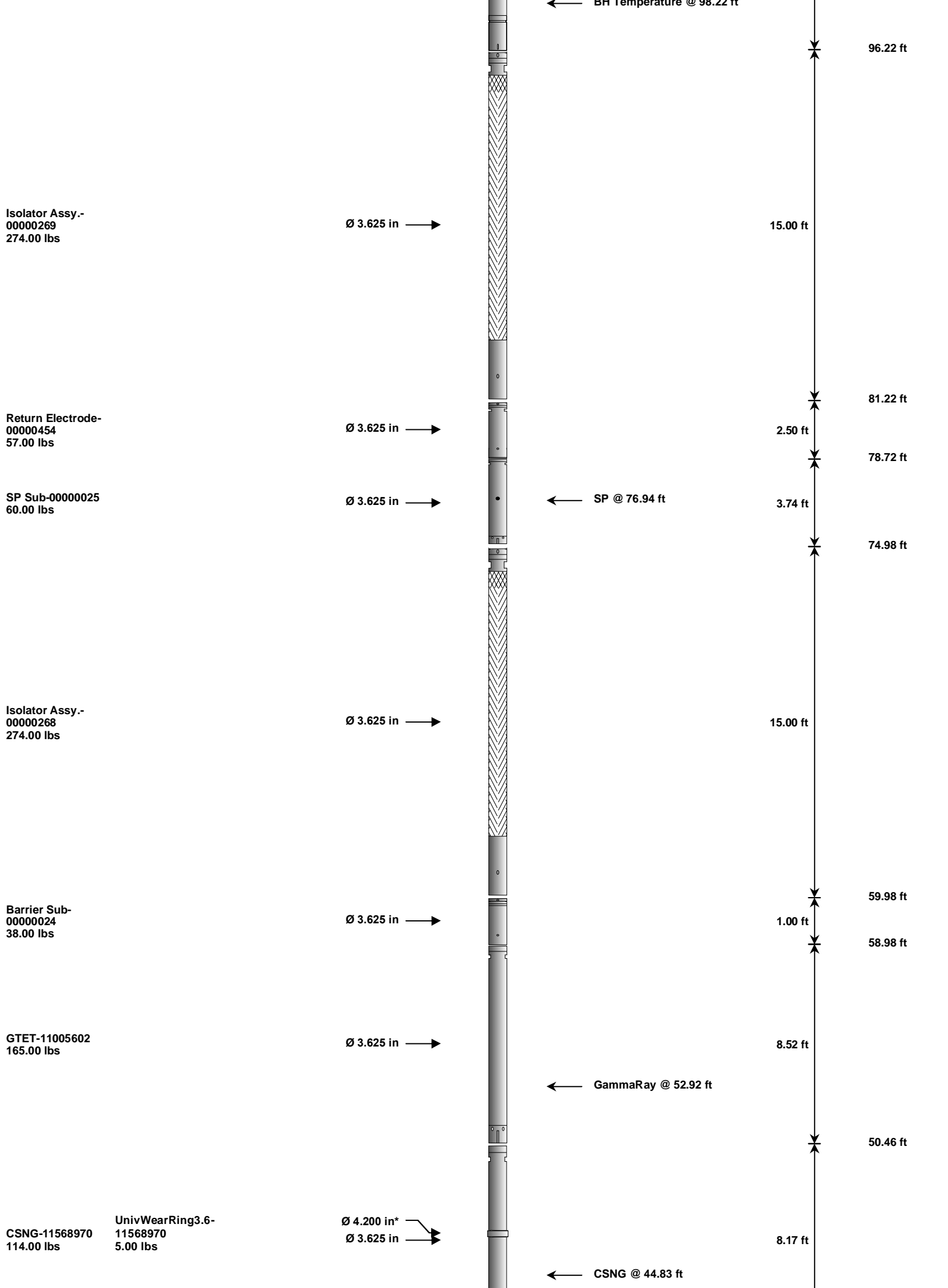
Data: KIND\_MOR\_CS\_1\0003 DLLTHW11574

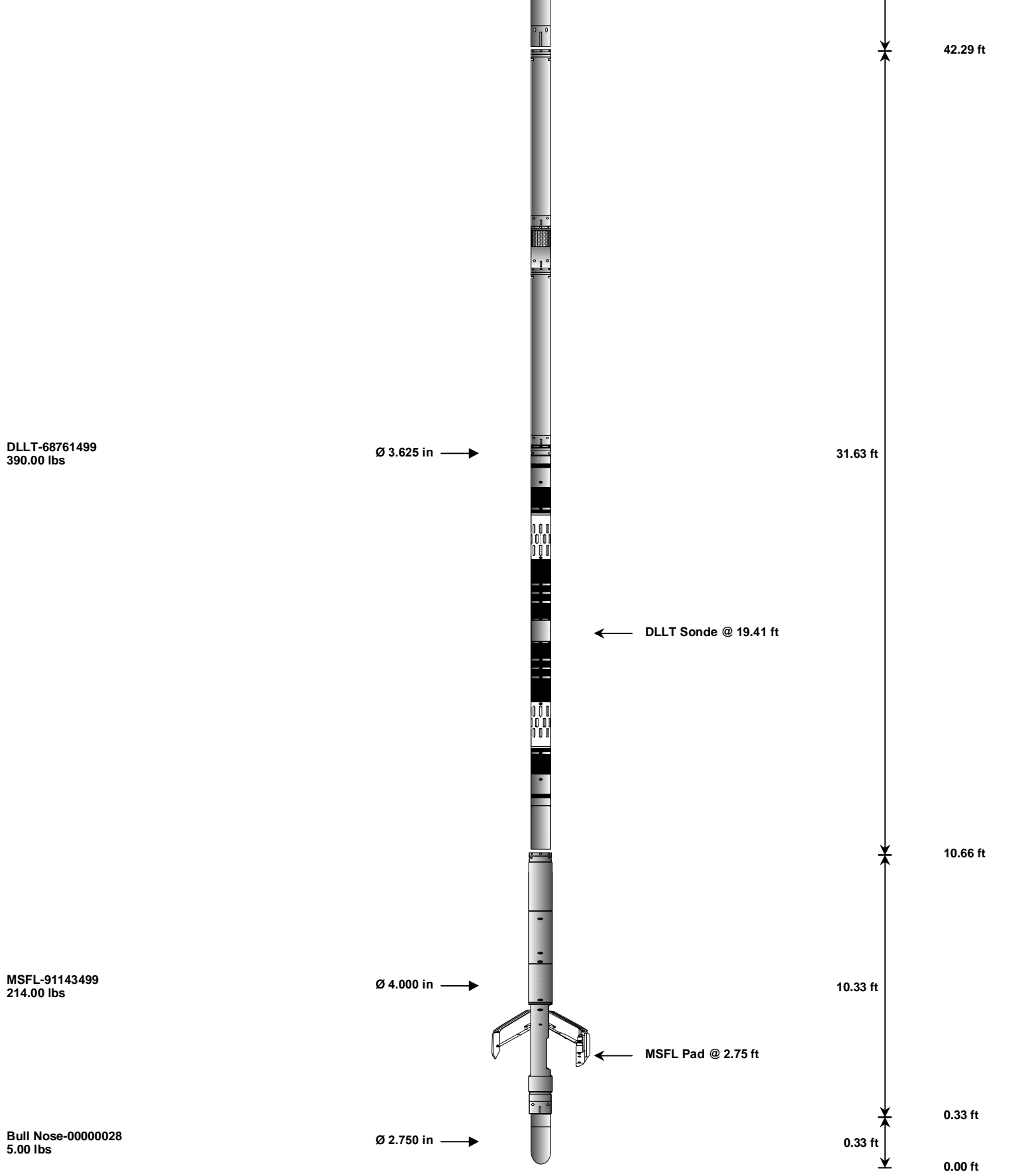
Date: 06-Mar-14 21:24:19

HALLIBURTON

TOOL STRING DIAGRAM REPORT

Description	Overbody Description	O.D.	Diagram	Sensors @ Delays	Length	Accumulated Length
RWCH-A032 135.00 lbs		Ø 3.625 in →		Load Cell @ 98.78 ft BH Temperature @ 98.78 ft	6.25 ft	102.47 ft





Mnemonic		Tool Name	Serial Number	Weight (lbs)	Length (ft)	Accumulated Length (ft)	Max.Log. Speed (fpm)
RWCH		Releasable Wireline Cable Head	A032	135.00	6.25	96.22	300.00
ISA		Isolator Assembly - Rigid Bridle	00000269	274.00	15.00	81.22	300.00
RE		Return Electrode - Rigid Bridle	00000454	57.00	2.50	78.72	300.00
SP		SP Sub	00000025	60.00	3.74	74.98	300.00
ISA		Isolator Assembly - Rigid Bridle	00000268	274.00	15.00	59.98	300.00
w		Barrier Sub - Rigid Bridle	00000024	38.00	1.00	58.98	300.00
GTET		Gamma Telemetry Tool	11005602	165.00	8.52	50.46	60.00
CSNG		Compensated Spectral Natural Gamma	11568970	114.00	8.17	42.29	15.00



UWR3P6	Universal Wear Ring 3 5-8 inch	11568970	5.00	0.35	*	46.37	300.00
DLLT	Dual Laterolog	68761499	390.00	31.63		10.66	100.00
MSFL	Micro Spherically Focused Log	91143499	214.00	10.33		0.33	60.00
BLNS	Bull Nose	00000028	5.00	0.33		0.00	300.00
Total			1,731.00	102.47			
					* Not included in Total Length and Length Accumulation.		
Data: KIND_MOR_CS_1\0003 DLLTIDLE					Date: 06-Mar-14 19:44:02		

COMPANY	KINDER MORGAN CO2 Co. L.P.					
WELL	COW CANYON CS #1					
FIELD	MCELMO DOME					
COUNTY	MONTEZUMA	STATE	CO			
HALLIBURTON			DUAL LATEROLOG MICRO-SPHERICALLY FOCUSED LOG			