

# BONANZA CREEK OIL COMPANY

Location: COLORADO Slot: SLOT#06 STATE ANTELOPE U41-Y44-30HNB (419'FNL & 841'FEL, SEC.30)  
Field: WELD COUNTY Well: STATE ANTELOPE U41-Y44-30HNB  
Facility: SEC.30-T5N-R62W Wellbore: STATE ANTELOPE U41-Y44-30HNB PWB

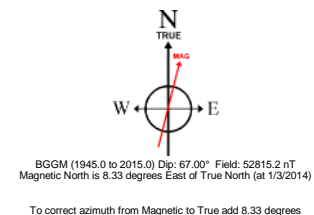
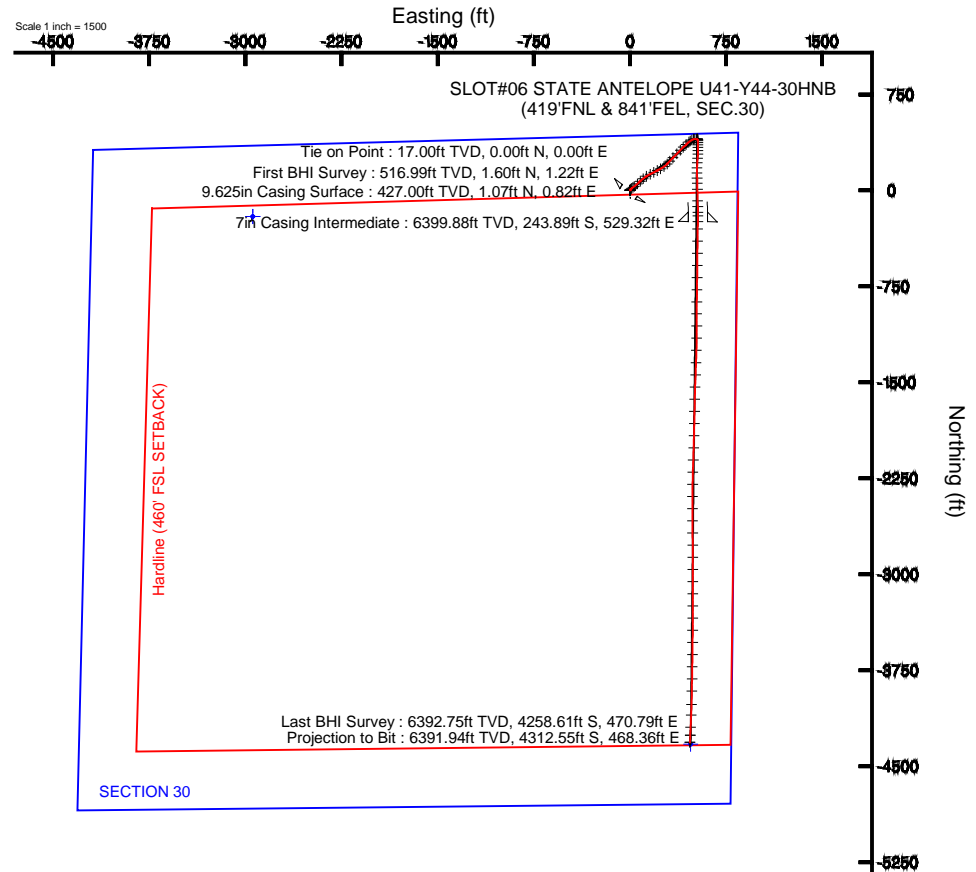
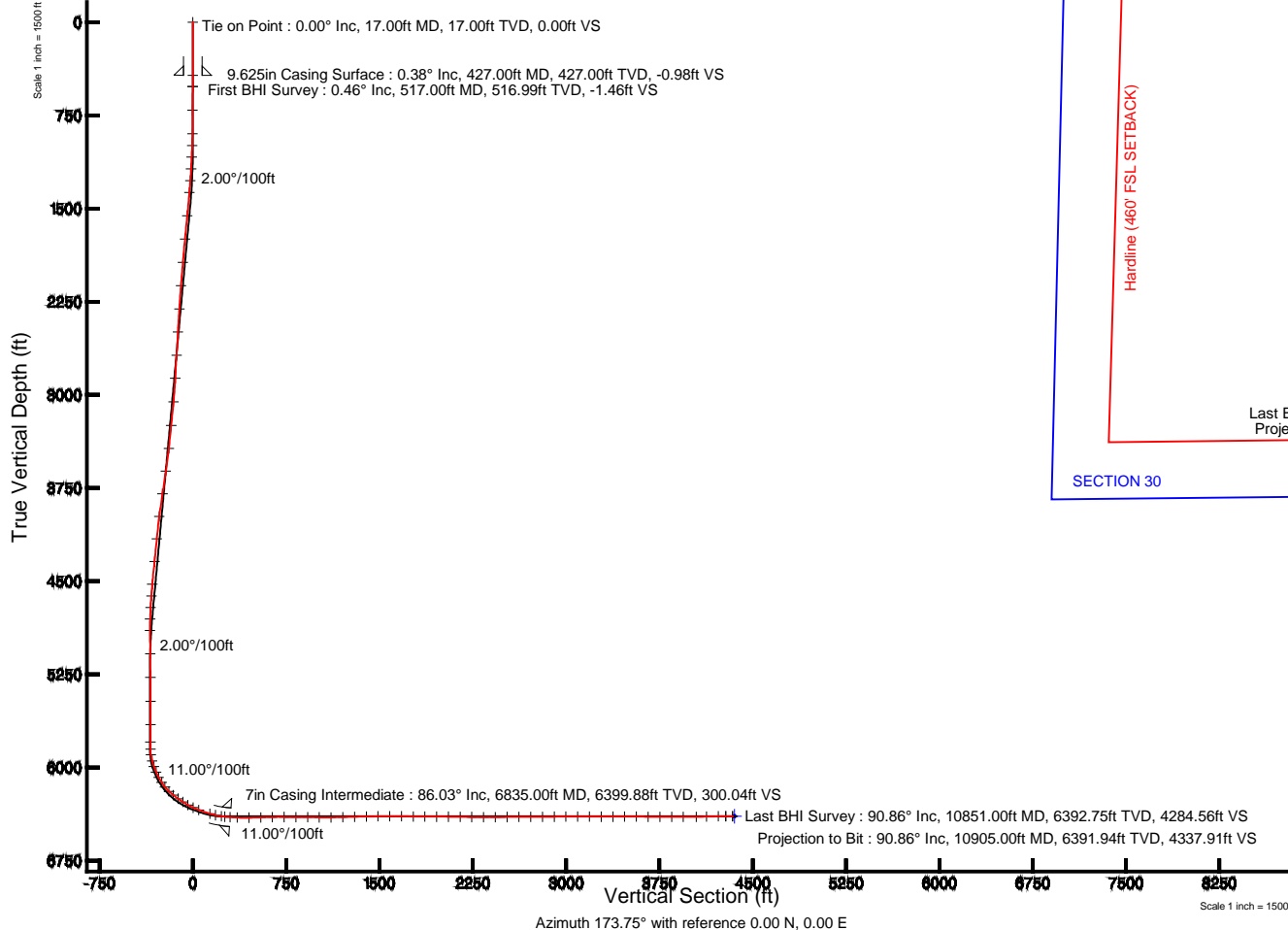


## Plot reference wellpath is STATE ANTELOPE U41-Y44-30HNB (REV-A.0) PWP

True vertical depths are referenced to CADE 26 (RKB)	Grid System: NAD83 / Lambert Colorado SP, Northern Zone (501), US feet
Measured depths are referenced to CADE 26 (RKB)	North Reference: True north
CADE 26 (RKB) to Mean Sea Level: 4678 feet	Scale: True distance
Mean Sea Level to Mud line (At Slot: SLOT#06 STATE ANTELOPE U41-Y44-30HNB (419'FNL & 841'FEL, SEC.30): 0 feet	Depths are in feet
Coordinates are in feet referenced to Slot	Created by: guenaler on 5/13/2014

## Location Information

Facility Name			Grid East (US ft)	Grid North (US ft)	Latitude	Longitude
SEC.30-T5N-R62W			3314735.928	1381829.438	40°22'33.672"N	104°22'13.080"W
Slot	Local N (ft)	Local E (ft)	Grid East (US ft)	Grid North (US ft)	Latitude	Longitude
SLOT#06 STATE ANTELOPE U41-Y44-30HNB (419'FNL & 841'FEL, SEC.30)	204.19	2942.21	3317675.173	1382071.082	40°22'35.688"N	104°21'35.064"W
CADE 26 (RKB) to Mud line (At Slot: SLOT#06 STATE ANTELOPE U41-Y44-30HNB (419'FNL & 841'FEL, SEC.30))					4678ft	
Mean Sea Level to Mud line (At Slot: SLOT#06 STATE ANTELOPE U41-Y44-30HNB (419'FNL & 841'FEL, SEC.30))					0ft	
CADE 26 (RKB) to Mean Sea Level					4678ft	





# Actual Wellpath Report

## STATE ANTELOPE U41-Y44-30HNB AWP

Page 1 of 7



### REFERENCE WELLPATH IDENTIFICATION

Operator	BONANZA CREEK OIL COMPANY	Slot	SLOT#06 STATE ANTELOPE U41-Y44-30HNB (419'FNL & 841'FEL, SEC.30)
Area	COLORADO	Well	STATE ANTELOPE U41-Y44-30HNB
Field	WELD COUNTY	Wellbore	STATE ANTELOPE U41-Y44-30HNB AWB
Facility	SEC.30-T5N-R62W		

### REPORT SETUP INFORMATION

Projection System	NAD83 / Lambert Colorado SP, Northern Zone (501), US feet	Software System	WellArchitect® 4.0.0
North Reference	True	User	Guenaler
Scale	0.999959	Report Generated	5/13/2014 at 11:54:51 AM
Convergence at slot	n/a	Database/Source file	WA_Denver/STATE_ANTELOPE_U41-Y44-30HNB_AWB.xml

### WELLPATH LOCATION

	Local coordinates		Grid coordinates		Geographic coordinates	
	North[ft]	East[ft]	Easting[US ft]	Northing[US ft]	Latitude	Longitude
Slot Location	204.19	2942.21	3317675.17	1382071.08	40°22'35.688"N	104°21'35.064"W
Facility Reference Pt			3314735.93	1381829.44	40°22'33.672"N	104°22'13.080"W
Field Reference Pt			3327718.19	1377782.99	40°21'52.020"N	104°19'26.040"W

### WELLPATH DATUM

Calculation method	Minimum curvature	CADE 26 (RKB) to Facility Vertical Datum	4678.00ft
Horizontal Reference Pt	Slot	CADE 26 (RKB) to Mean Sea Level	4678.00ft
Vertical Reference Pt	CADE 26 (RKB)	CADE 26 (RKB) to Mud Line at Slot (SLOT#06 STATE ANTELOPE U41-Y44-30HNB (419'FNL & 841'FEL, SEC.30))	4678.00ft
MD Reference Pt	CADE 26 (RKB)	Section Origin	N 0.00, E 0.00 ft
Field Vertical Reference	Mean Sea Level	Section Azimuth	173.75°



# Actual Wellpath Report

## STATE ANTELOPE U41-Y44-30HNB AWP

Page 2 of 7



### REFERENCE WELLPATH IDENTIFICATION

Operator	BONANZA CREEK OIL COMPANY	Slot	SLOT#06 STATE ANTELOPE U41-Y44-30HNB (419'FNL & 841'FEL, SEC.30)
Area	COLORADO	Well	STATE ANTELOPE U41-Y44-30HNB
Field	WELD COUNTY	Wellbore	STATE ANTELOPE U41-Y44-30HNB AWP
Facility	SEC.30-T5N-R62W		

### WELLPATH DATA (99 stations)

MD [ft]	Inclination [°]	Azimuth [°]	TVD [ft]	Vert Sect [ft]	North [ft]	East [ft]	Latitude	Longitude	DLS [°/100ft]	Comments
0.00	0.000	37.260	0.00	0.00	0.00	0.00	40°22'35.688"N	104°21'35.064"W	0.00	
17.00	0.000	37.260	17.00	0.00	0.00	0.00	40°22'35.688"N	104°21'35.064"W	0.00	Tie on Point
517.00	0.460	37.260	516.99	-1.46	1.60	1.22	40°22'35.704"N	104°21'35.048"W	0.09	First BHI Survey
707.00	0.400	50.580	706.99	-2.37	2.63	2.19	40°22'35.714"N	104°21'35.036"W	0.06	
898.00	0.610	16.070	897.98	-3.68	4.03	2.99	40°22'35.728"N	104°21'35.025"W	0.19	
993.00	2.460	33.570	992.94	-5.71	6.21	4.25	40°22'35.749"N	104°21'35.009"W	1.99	
1087.00	4.040	43.190	1086.79	-9.41	10.31	7.64	40°22'35.790"N	104°21'34.965"W	1.77	
1182.00	5.740	49.970	1181.44	-14.23	15.80	13.56	40°22'35.844"N	104°21'34.889"W	1.89	
1277.00	8.120	52.660	1275.74	-20.34	22.93	22.54	40°22'35.915"N	104°21'34.773"W	2.53	
1373.00	9.410	52.400	1370.62	-27.92	31.83	34.15	40°22'36.003"N	104°21'34.623"W	1.34	
1562.00	9.450	48.300	1557.07	-44.96	51.58	57.97	40°22'36.198"N	104°21'34.315"W	0.36	
1752.00	8.860	46.040	1744.65	-62.96	72.11	80.15	40°22'36.401"N	104°21'34.028"W	0.36	
1942.00	9.270	52.820	1932.28	-79.78	91.52	102.88	40°22'36.592"N	104°21'33.735"W	0.60	
2133.00	10.080	56.210	2120.56	-95.42	110.11	129.03	40°22'36.776"N	104°21'33.397"W	0.52	
2323.00	10.070	64.070	2307.64	-108.70	126.62	157.78	40°22'36.939"N	104°21'33.025"W	0.72	
2512.00	8.660	61.890	2494.12	-119.57	140.55	185.20	40°22'37.077"N	104°21'32.671"W	0.77	
2702.00	10.100	62.740	2681.57	-130.87	154.92	212.62	40°22'37.219"N	104°21'32.317"W	0.76	
2890.00	7.530	61.610	2867.34	-141.42	168.33	238.12	40°22'37.351"N	104°21'31.987"W	1.37	
3081.00	11.680	55.250	3055.62	-155.37	185.31	265.03	40°22'37.519"N	104°21'31.640"W	2.24	
3275.00	8.280	41.880	3246.68	-174.08	206.91	290.50	40°22'37.733"N	104°21'31.310"W	2.11	
3462.00	9.720	42.980	3431.38	-193.37	228.49	310.25	40°22'37.946"N	104°21'31.055"W	0.78	
3648.00	12.950	44.320	3613.73	-216.87	254.89	335.52	40°22'38.207"N	104°21'30.729"W	1.74	
3836.00	13.380	44.600	3796.78	-243.99	285.45	365.51	40°22'38.509"N	104°21'30.341"W	0.23	
4023.00	11.510	43.830	3979.38	-269.63	314.32	393.63	40°22'38.794"N	104°21'29.978"W	1.00	
4207.00	8.800	45.690	4160.48	-290.09	337.40	416.42	40°22'39.022"N	104°21'29.683"W	1.48	
4392.00	9.980	47.100	4343.00	-308.38	358.20	438.29	40°22'39.228"N	104°21'29.401"W	0.65	
4577.00	8.310	46.450	4525.64	-326.06	378.32	459.72	40°22'39.426"N	104°21'29.124"W	0.90	
4671.00	8.720	58.770	4618.61	-333.18	386.70	470.74	40°22'39.509"N	104°21'28.982"W	1.98	
4765.00	8.770	58.840	4711.52	-339.21	394.10	482.96	40°22'39.582"N	104°21'28.824"W	0.05	
4860.00	7.450	70.840	4805.58	-343.64	399.87	494.98	40°22'39.639"N	104°21'28.668"W	2.25	



# Actual Wellpath Report

## STATE ANTELOPE U41-Y44-30HNB AWP

Page 3 of 7



### REFERENCE WELLPATH IDENTIFICATION

Operator	BONANZA CREEK OIL COMPANY	Slot	SLOT#06 STATE ANTELOPE U41-Y44-30HNB (419'FNL & 841'FEL, SEC.30)
Area	COLORADO	Well	STATE ANTELOPE U41-Y44-30HNB
Field	WELD COUNTY	Wellbore	STATE ANTELOPE U41-Y44-30HNB AWP
Facility	SEC.30-T5N-R62W		

### WELLPATH DATA (99 stations)

MD [ft]	Inclination [°]	Azimuth [°]	TVD [ft]	Vert Sect [ft]	North [ft]	East [ft]	Latitude	Longitude	DLS [°/100ft]	Comments
4951.00	5.430	87.770	4896.01	-344.66	401.97	504.86	40°22'39.660"N	104°21'28.541"W	3.02	
5141.00	1.850	109.760	5085.60	-342.68	401.29	516.73	40°22'39.653"N	104°21'28.387"W	1.99	
5331.00	1.020	97.620	5275.54	-340.93	400.03	521.29	40°22'39.641"N	104°21'28.328"W	0.46	
5522.00	0.930	99.680	5466.51	-340.10	399.54	524.51	40°22'39.636"N	104°21'28.287"W	0.05	
5711.00	0.520	56.390	5655.50	-340.07	399.76	526.73	40°22'39.638"N	104°21'28.258"W	0.35	
5850.00	0.580	27.840	5794.49	-340.94	400.73	527.59	40°22'39.648"N	104°21'28.247"W	0.20	
5908.00	1.080	136.690	5852.49	-340.75	400.59	528.10	40°22'39.646"N	104°21'28.240"W	2.38	
5953.00	7.460	175.050	5897.34	-337.49	397.37	528.64	40°22'39.615"N	104°21'28.233"W	14.77	
6003.00	14.550	174.900	5946.39	-327.95	387.87	529.48	40°22'39.521"N	104°21'28.223"W	14.18	
6052.00	19.870	178.560	5993.18	-313.49	373.40	530.24	40°22'39.378"N	104°21'28.213"W	11.07	
6099.00	23.430	178.110	6036.86	-296.21	356.07	530.75	40°22'39.207"N	104°21'28.206"W	7.58	
6146.00	28.270	180.080	6079.14	-275.81	335.59	531.04	40°22'39.004"N	104°21'28.202"W	10.46	
6194.00	33.610	180.710	6120.30	-251.31	310.92	530.86	40°22'38.760"N	104°21'28.205"W	11.15	
6240.00	39.850	182.590	6157.15	-224.08	283.44	530.03	40°22'38.489"N	104°21'28.215"W	13.78	
6288.00	46.620	184.050	6192.10	-191.69	250.64	528.11	40°22'38.165"N	104°21'28.240"W	14.26	
6335.00	52.330	184.430	6222.63	-156.57	215.02	525.46	40°22'37.813"N	104°21'28.275"W	12.16	
6384.00	54.650	182.110	6251.78	-117.74	175.71	523.23	40°22'37.424"N	104°21'28.303"W	6.07	
6431.00	56.910	178.860	6278.22	-79.15	136.86	522.91	40°22'37.040"N	104°21'28.307"W	7.47	
6478.00	60.070	177.960	6302.78	-39.22	96.81	524.03	40°22'36.645"N	104°21'28.293"W	6.92	
6525.00	66.380	178.510	6323.94	2.59	54.89	525.31	40°22'36.230"N	104°21'28.276"W	13.47	
6574.00	70.370	178.890	6341.99	47.97	9.36	526.35	40°22'35.780"N	104°21'28.263"W	8.17	
6669.00	72.540	179.040	6372.21	137.65	-80.69	527.97	40°22'34.891"N	104°21'28.242"W	2.29	
6716.00	77.640	178.160	6384.30	182.89	-126.07	529.09	40°22'34.442"N	104°21'28.228"W	11.00	
6763.00	81.020	179.890	6393.00	228.88	-172.25	529.87	40°22'33.986"N	104°21'28.218"W	8.05	
6790.00	84.870	180.460	6396.31	255.50	-199.04	529.78	40°22'33.721"N	104°21'28.219"W	14.41	
6893.00	87.520	181.070	6403.15	357.49	-301.79	528.41	40°22'32.706"N	104°21'28.237"W	2.64	
6988.00	91.080	180.520	6404.31	451.76	-396.76	527.09	40°22'31.767"N	104°21'28.254"W	3.79	
7083.00	91.730	180.600	6401.98	546.06	-491.73	526.17	40°22'30.829"N	104°21'28.266"W	0.69	
7177.00	91.270	180.450	6399.52	639.37	-585.69	525.31	40°22'29.900"N	104°21'28.277"W	0.51	
7272.00	89.200	180.800	6399.13	733.68	-680.68	524.27	40°22'28.962"N	104°21'28.290"W	2.21	



# Actual Wellpath Report

## STATE ANTELOPE U41-Y44-30HNB AWP

Page 4 of 7



### REFERENCE WELLPATH IDENTIFICATION

Operator	BONANZA CREEK OIL COMPANY	Slot	SLOT#06 STATE ANTELOPE U41-Y44-30HNB (419'FNL & 841'FEL, SEC.30)
Area	COLORADO	Well	STATE ANTELOPE U41-Y44-30HNB
Field	WELD COUNTY	Wellbore	STATE ANTELOPE U41-Y44-30HNB AWP
Facility	SEC.30-T5N-R62W		

### WELLPATH DATA (99 stations)

MD [ft]	Inclination [°]	Azimuth [°]	TVD [ft]	Vert Sect [ft]	North [ft]	East [ft]	Latitude	Longitude	DLS [°/100ft]	Comments
7367.00	89.820	181.120	6399.94	827.93	-775.66	522.68	40°22'28.023"N	104°21'28.311"W	0.73	
7462.00	89.910	180.440	6400.17	922.21	-870.65	521.38	40°22'27.084"N	104°21'28.327"W	0.72	
7557.00	88.180	179.960	6401.75	1016.59	-965.63	521.05	40°22'26.146"N	104°21'28.332"W	1.89	
7652.00	91.310	179.930	6402.17	1111.03	-1060.62	521.14	40°22'25.207"N	104°21'28.331"W	3.29	
7747.00	91.790	180.750	6399.60	1205.36	-1155.58	520.58	40°22'24.269"N	104°21'28.338"W	1.00	
7842.00	91.360	181.800	6396.99	1299.51	-1250.52	518.47	40°22'23.331"N	104°21'28.365"W	1.19	
7938.00	90.590	182.070	6395.36	1394.52	-1346.45	515.23	40°22'22.383"N	104°21'28.407"W	0.85	
8033.00	91.610	182.020	6393.53	1488.51	-1441.37	511.84	40°22'21.445"N	104°21'28.451"W	1.07	
8128.00	89.690	181.860	6392.46	1582.53	-1536.31	508.62	40°22'20.507"N	104°21'28.493"W	2.03	
8223.00	89.380	181.480	6393.23	1676.62	-1631.26	505.85	40°22'19.568"N	104°21'28.528"W	0.52	
8318.00	88.950	180.960	6394.61	1770.80	-1726.23	503.83	40°22'18.630"N	104°21'28.555"W	0.71	
8413.00	89.470	181.410	6395.92	1865.00	-1821.20	501.87	40°22'17.691"N	104°21'28.580"W	0.72	
8509.00	90.000	181.350	6396.37	1960.15	-1917.17	499.55	40°22'16.743"N	104°21'28.610"W	0.56	
8604.00	89.660	181.610	6396.65	2054.28	-2012.14	497.10	40°22'15.805"N	104°21'28.642"W	0.45	
8699.00	89.040	182.020	6397.73	2148.34	-2107.09	494.09	40°22'14.866"N	104°21'28.680"W	0.78	
8794.00	89.070	181.900	6399.29	2242.35	-2202.02	490.84	40°22'13.928"N	104°21'28.722"W	0.13	
8889.00	89.940	180.590	6400.11	2336.53	-2296.99	488.78	40°22'12.990"N	104°21'28.749"W	1.66	
8984.00	90.530	180.300	6399.72	2430.89	-2391.98	488.04	40°22'12.051"N	104°21'28.759"W	0.69	
9079.00	90.400	179.730	6398.95	2525.32	-2486.98	488.02	40°22'11.112"N	104°21'28.759"W	0.62	
9175.00	90.280	179.830	6398.38	2620.78	-2582.98	488.38	40°22'10.164"N	104°21'28.754"W	0.16	
9270.00	90.310	179.740	6397.89	2715.26	-2677.98	488.74	40°22'09.225"N	104°21'28.750"W	0.10	
9365.00	90.280	179.330	6397.40	2809.77	-2772.97	489.51	40°22'08.286"N	104°21'28.740"W	0.43	
9460.00	90.650	179.820	6396.63	2904.28	-2867.97	490.22	40°22'07.348"N	104°21'28.731"W	0.65	
9555.00	90.120	179.970	6395.99	2998.73	-2962.96	490.39	40°22'06.409"N	104°21'28.728"W	0.58	
9650.00	90.430	180.060	6395.54	3093.16	-3057.96	490.37	40°22'05.470"N	104°21'28.729"W	0.34	
9745.00	89.350	179.930	6395.72	3187.60	-3152.96	490.37	40°22'04.531"N	104°21'28.729"W	1.15	
9840.00	89.880	180.300	6396.36	3282.01	-3247.96	490.18	40°22'03.593"N	104°21'28.731"W	0.68	
9935.00	90.090	180.290	6396.38	3376.39	-3342.96	489.69	40°22'02.654"N	104°21'28.738"W	0.22	
10030.00	90.280	180.250	6396.08	3470.78	-3437.95	489.25	40°22'01.715"N	104°21'28.743"W	0.20	
10125.00	89.690	180.300	6396.10	3565.16	-3532.95	488.79	40°22'00.776"N	104°21'28.749"W	0.62	



# Actual Wellpath Report

## STATE ANTELOPE U41-Y44-30HNB AWP

Page 5 of 7



### REFERENCE WELLPATH IDENTIFICATION

Operator	BONANZA CREEK OIL COMPANY	Slot	SLOT#06 STATE ANTELOPE U41-Y44-30HNB (419'FNL & 841'FEL, SEC.30)
Area	COLORADO	Well	STATE ANTELOPE U41-Y44-30HNB
Field	WELD COUNTY	Wellbore	STATE ANTELOPE U41-Y44-30HNB AWP
Facility	SEC.30-T5N-R62W		

### WELLPATH DATA (99 stations)

MD [ft]	Inclination [°]	Azimuth [°]	TVD [ft]	Vert Sect [ft]	North [ft]	East [ft]	Latitude	Longitude	DLS [°/100ft]	Comments
10220.00	89.260	181.110	6396.97	3659.46	-3627.94	487.62	40°21'59.838"N	104°21'28.764"W	0.97	
10316.00	89.570	180.730	6397.95	3754.70	-3723.92	486.08	40°21'58.889"N	104°21'28.784"W	0.51	
10410.00	89.910	181.210	6398.38	3847.96	-3817.91	484.49	40°21'57.961"N	104°21'28.805"W	0.63	
10504.00	90.060	181.030	6398.40	3941.18	-3911.89	482.65	40°21'57.032"N	104°21'28.829"W	0.25	
10610.00	90.830	181.360	6397.58	4046.28	-4017.86	480.44	40°21'55.985"N	104°21'28.857"W	0.79	
10694.00	91.720	182.770	6395.71	4129.38	-4101.78	477.42	40°21'55.155"N	104°21'28.896"W	1.98	
10789.00	90.780	182.140	6393.64	4223.26	-4196.67	473.35	40°21'54.218"N	104°21'28.949"W	1.19	
10851.00	90.860	182.580	6392.75	4284.56	-4258.61	470.79	40°21'53.606"N	104°21'28.982"W	0.72	Last BHI Survey
10905.00	90.860	182.580	6391.94	4337.91	-4312.55	468.36	40°21'53.073"N	104°21'29.013"W	0.00	Projection to Bit

### HOLE & CASING SECTIONS -

Ref Wellbore: STATE ANTELOPE U41-Y44-30HNB AWP Ref Wellpath: STATE ANTELOPE U41-Y44-30HNB AWP

String/Diameter	Start MD [ft]	End MD [ft]	Interval [ft]	Start TVD [ft]	End TVD [ft]	Start N/S [ft]	Start E/W [ft]	End N/S [ft]	End E/W [ft]
9.625in Casing Surface	17.00	427.00	410.00	17.00	427.00	0.00	0.00	1.07	0.82
8.5in Open Hole	427.00	6852.00	6425.00	427.00	6401.00	1.07	0.82	-260.85	529.09
7in Casing Intermediate	17.00	6835.00	6818.00	17.00	6399.88	0.00	0.00	-243.89	529.32
6.125in Open Hole	6835.00	10905.00	4070.00	6399.88	6391.94	-243.89	529.32	-4312.55	468.36



# Actual Wellpath Report

## STATE ANTELOPE U41-Y44-30HNB AWP

Page 6 of 7



### REFERENCE WELLPATH IDENTIFICATION

Operator	BONANZA CREEK OIL COMPANY	Slot	SLOT#06 STATE ANTELOPE U41-Y44-30HNB (419'FNL & 841'FEL, SEC.30)
Area	COLORADO	Well	STATE ANTELOPE U41-Y44-30HNB
Field	WELD COUNTY	Wellbore	STATE ANTELOPE U41-Y44-30HNB AWP
Facility	SEC.30-T5N-R62W		

### TARGETS

Name	MD [ft]	TVD [ft]	North [ft]	East [ft]	Grid East [US ft]	Grid North [US ft]	Latitude	Longitude	Shape
STATE ANTELOPE K-O-30HNB SECTION 30		52.00	-203.84	-2942.24	3314735.93	1381829.44	40°22'33.672"N	104°22'13.080"W	polygon
STATE ANTELOPE U41-Y44-30HNB BHL FROM PLAT (470'FSL & 319'FEL, SEC.30)		6393.00	-4328.00	473.73	3318204.50	1377749.72	40°21'52.920"N	104°21'28.944"W	point
STATE ANTELOPE K-O-30HNB Hardline (460' FSL SETBACK)		6404.00	-203.84	-2942.24	3314735.93	1381829.44	40°22'33.672"N	104°22'13.080"W	polygon

### WELLPATH COMPOSITION -

Ref Wellbore: STATE ANTELOPE U41-Y44-30HNB AWP Ref Wellpath: STATE ANTELOPE U41-Y44-30HNB AWP

Start MD [ft]	End MD [ft]	Positional Uncertainty Model	Log Name/Comment	Wellbore
0.00	6790.00	NaviTrak (MagCorr)	BHI/Navitrak MWD 8.75" Hole <17-6790>	STATE ANTELOPE U41-Y44-30HNB AWP
6790.00	10851.00	NaviTrak (Standard)	BHI/Navitrak MWD 6.125" Hole <6893'-10851>	STATE ANTELOPE U41-Y44-30HNB AWP
10851.00	10905.00	Blind Drilling (std)	Projection to bit	STATE ANTELOPE U41-Y44-30HNB AWP



# Actual Wellpath Report

STATE ANTELOPE U41-Y44-30HNB AWP

Page 7 of 7



## REFERENCE WELLPATH IDENTIFICATION

Operator	BONANZA CREEK OIL COMPANY	Slot	SLOT#06 STATE ANTELOPE U41-Y44-30HNB (419'FNL & 841'FEL, SEC.30)
Area	COLORADO	Well	STATE ANTELOPE U41-Y44-30HNB
Field	WELD COUNTY	Wellbore	STATE ANTELOPE U41-Y44-30HNB AWB
Facility	SEC.30-T5N-R62W		

## WELLPATH COMMENTS

MD [ft]	Inclination [°]	Azimuth [°]	TVD [ft]	Comment
17.00	0.000	37.260	17.00	Tie on Point
517.00	0.460	37.260	516.99	First BHI Survey
10851.00	90.860	182.580	6392.75	Last BHI Survey
10905.00	90.860	182.580	6391.94	Projection to Bit