



CEMENT BOND LOG GAMMA RAY CCL

Company KERR-McGEE OIL & GAS ONSHORE LP
Well EISENACH & PRESTON 8-7K
Field WATTENBERG
County WELD
State COLORADO

Company KERR-McGEE OIL & GAS ONSHORE LP
Well EISENACH & PRESTON 8-7K
Field WATTENBERG
County WELD State COLORADO

Location: SHL: 2028' FNL & 1992' FEL SW/NE
LAT: 40.24100 & LONG: -104.79900
API # : 05-123-15836
Other Services
Permanent Datum GL Elevation 4860'
Log Measured From KB 11'
Drilling Measured From KB
SEC 8 TWP 3N RGE 66W

Date 4-16-2014

Run Number ONE
Depth Driller 7496'
Depth Logger 5100'
Bottom Logged Interval 5100'
Top Log Interval SURFACE
Open Hole Size 7 7/8
Type Fluid WATER
Density / Viscosity 1.0
Max. Recorded Temp. 167 DEG. F
Estimated Cement Top 3584' & Surface
Time Well Ready N/A
Time Logger on Bottom N/A
Equipment Number 5432
Location GREELEY, CO
Recorded By M. JANDREAU
Witnessed By JAY CHANDLER

Borehole Record
Run Number Bit From To Size Weight From To
ONE
TWO

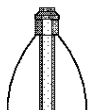
Casing Record
Surface String Size 8 5/8 Wgt/Ft 23# Top 0 Bottom 518'
Prot. String
Production String 4 1/2" 11.6# 0 7490'
Liner

<<< Fold Here >>>

All interpretations are opinions based on inferences from electrical or other measurements and we cannot and do not guarantee the accuracy or correctness of any interpretation, and we shall not, except in the case of gross or willful negligence on our part, be liable or responsible for any loss, costs, damages, or expenses incurred or sustained by anyone resulting from any interpretation made by any of our officers, agents or employees. These interpretations are also subject to our general terms and conditions set out in our current Price Schedule.

Comments

NOT CORRELATED
RAN LOG TO VERIFY CEMENT
THANK YOU FOR USING WARRIOR ENERGY SERVICES!!!!

Sensor	Offset (ft)	Schematic	Description	Len (ft)	OD (in)	Wt (lb)
						



Tool Joint	Length (ft)	Weight (lb)	O.D. (in)	Notes
PTS275	2.83	2.75		
HEADVOLT	16.25			
IntTemp	14.83			
WVFS3FT	11.58			
WVFCAL	11.58			
WVFS1	11.58			
WVFS2	11.58			
WVFS3	11.58			
WVFS4	11.58			
WVFS5	11.58			
WVFS6	11.58			
WVFS7	11.58			
WVFS8	11.58			
WVFS5FT	10.58			
CNLSC	6.00			
CNSSC	5.17			
CCL	3.64			
GR	0.90			
RBT-Probe (Base)	8.92	2.75	90.00	Probe Radii Bond Tool with Digital Telemetry
CNT-Probe_B (275)	3.00	2.75	40.00	6 bow centralizer
GR-Probe (275)	4.33	2.75	30.00	Probe 2.75"

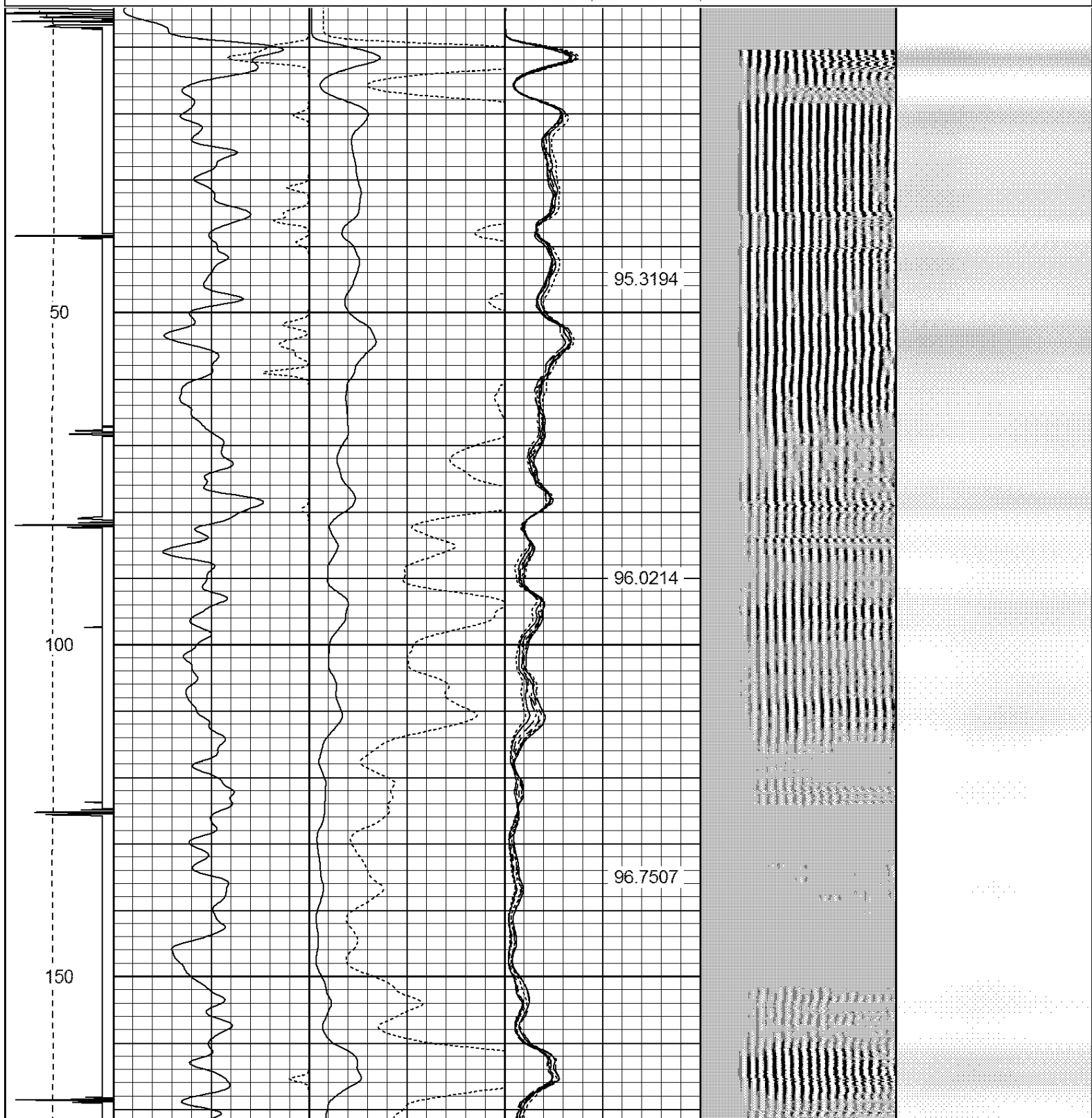
Dataset: eisenach preston 8-7k.db: field/well/run1/pass3

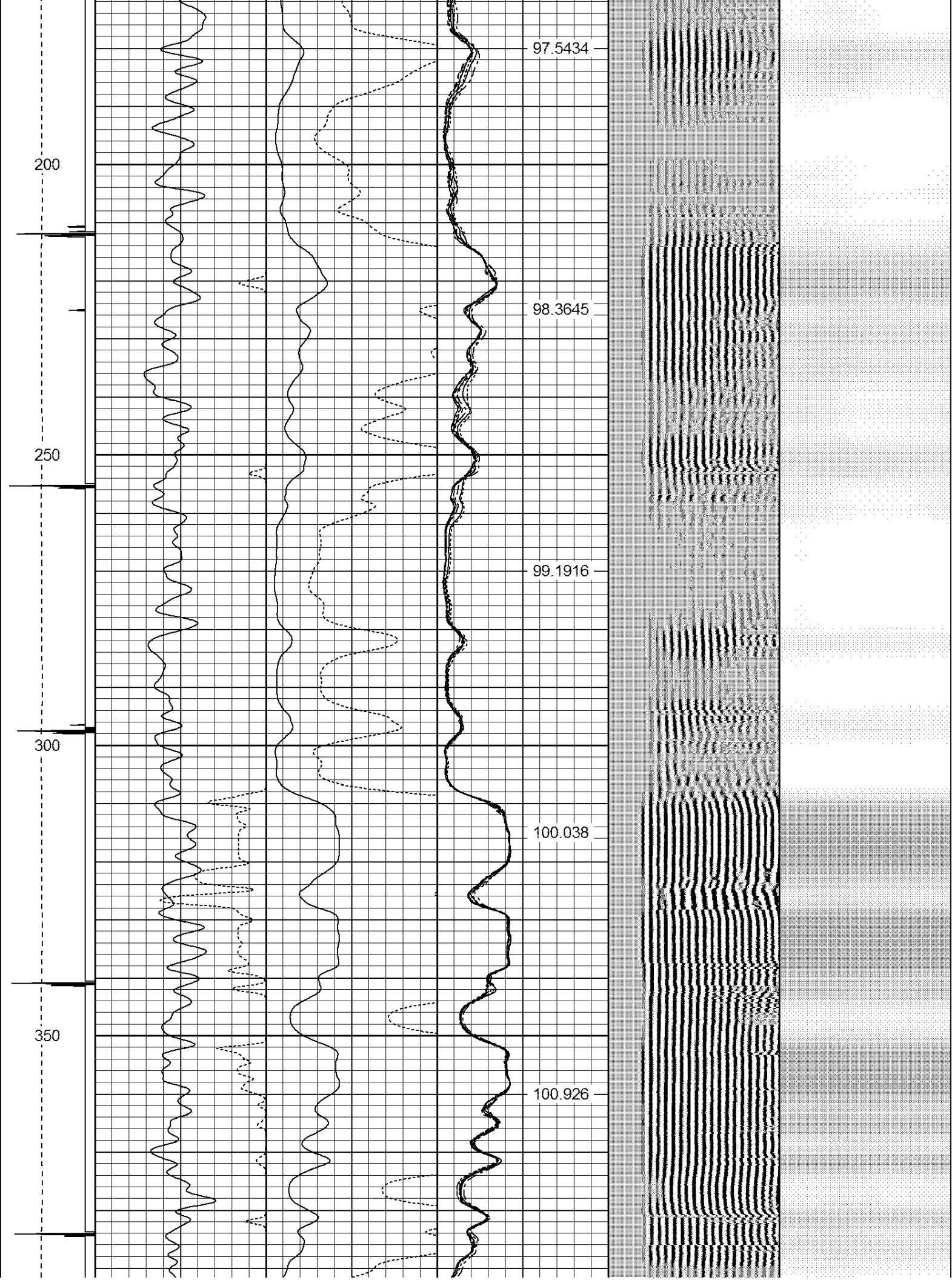
Total Length: 19.08 ft

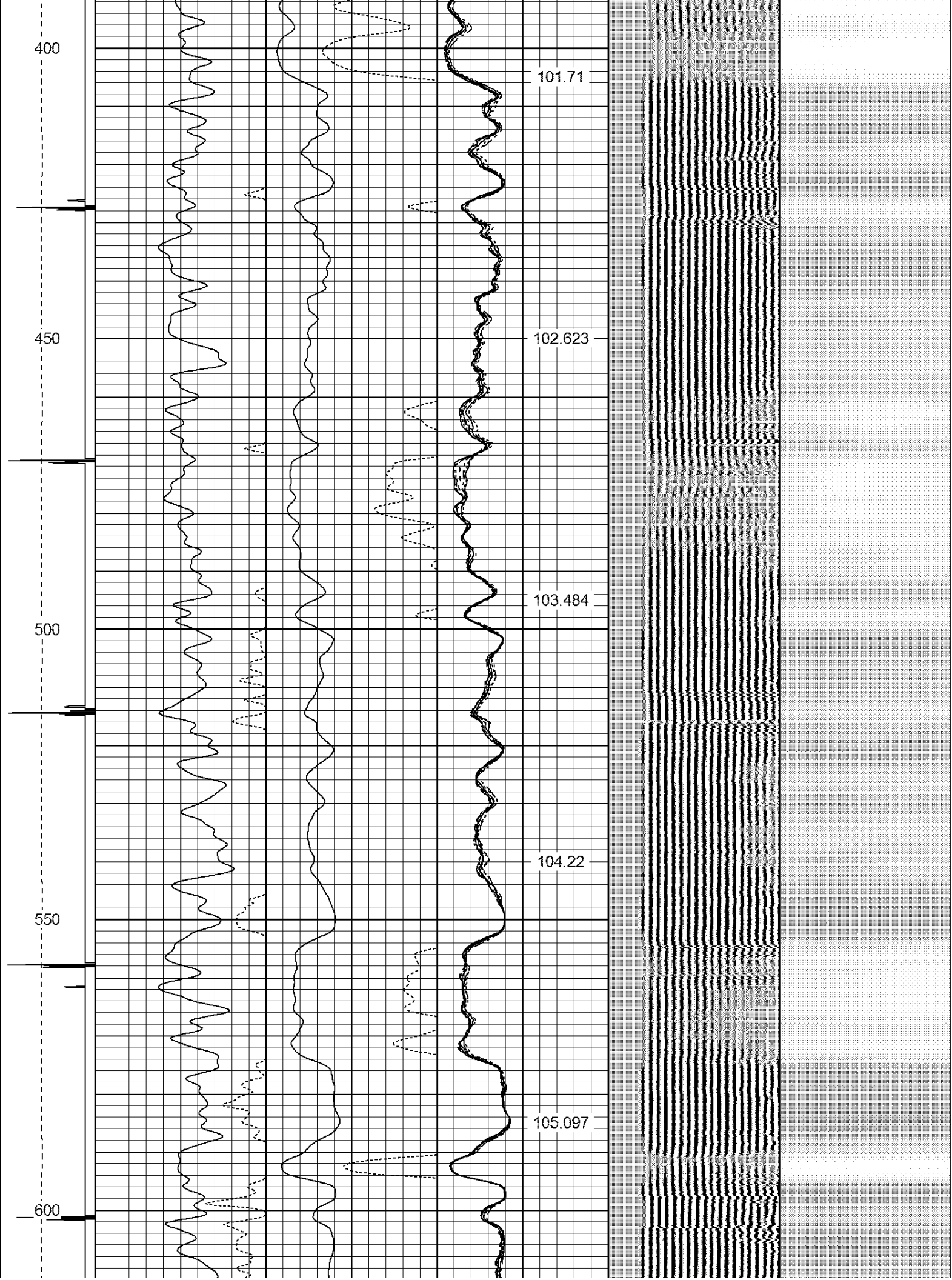
Total Weight: 160.00 lb

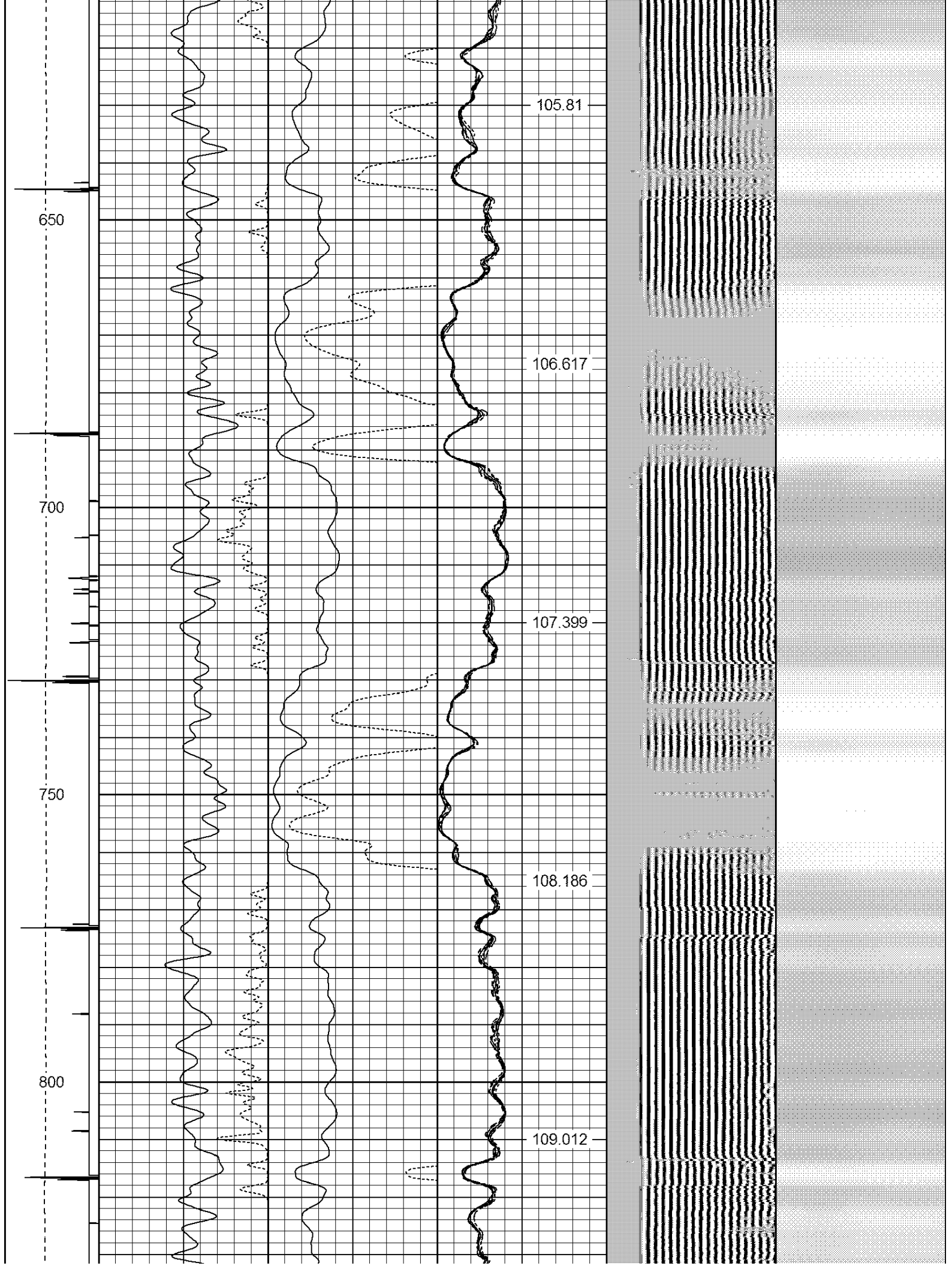
O.D. 2.75 in

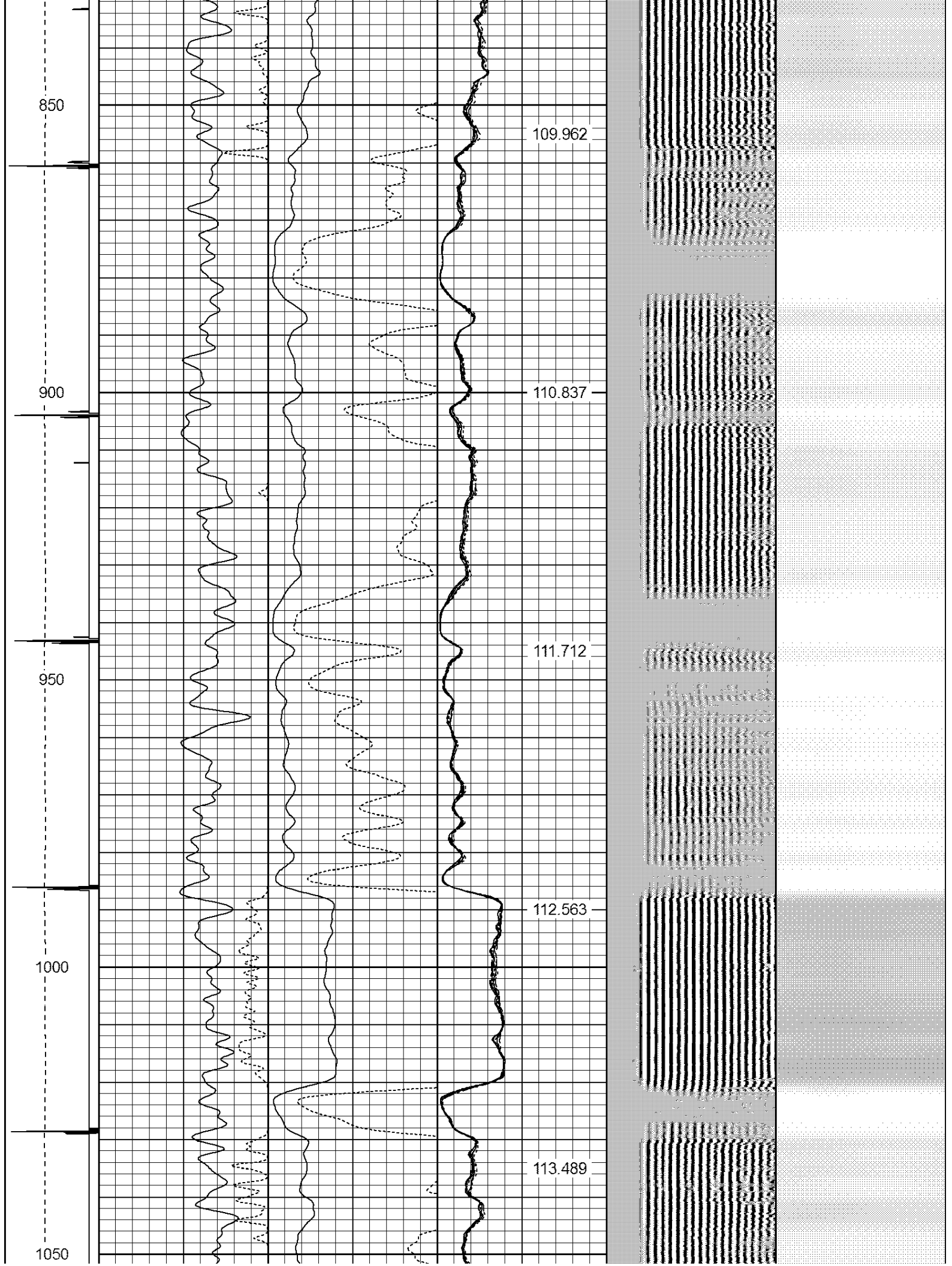
-9	CCL	1	200	TT (usec)	800	0	AMP (mV)	100	0	AMPS1	100	200	VDL	1200	1	Cement Map	8
LSPD (ft/min)	0	250	0	GR (GAPI)	200	0	AMPx5 (mV)	20	0	AMPS2	100		1				
			200	GR (GAPI)	400				0	AMPS4	100						
								0	AMPS5	100							
								0	AMPS6	100							
								0	AMPS7	100							
								0	AMPS8	100							
										IntTemp (degF)							

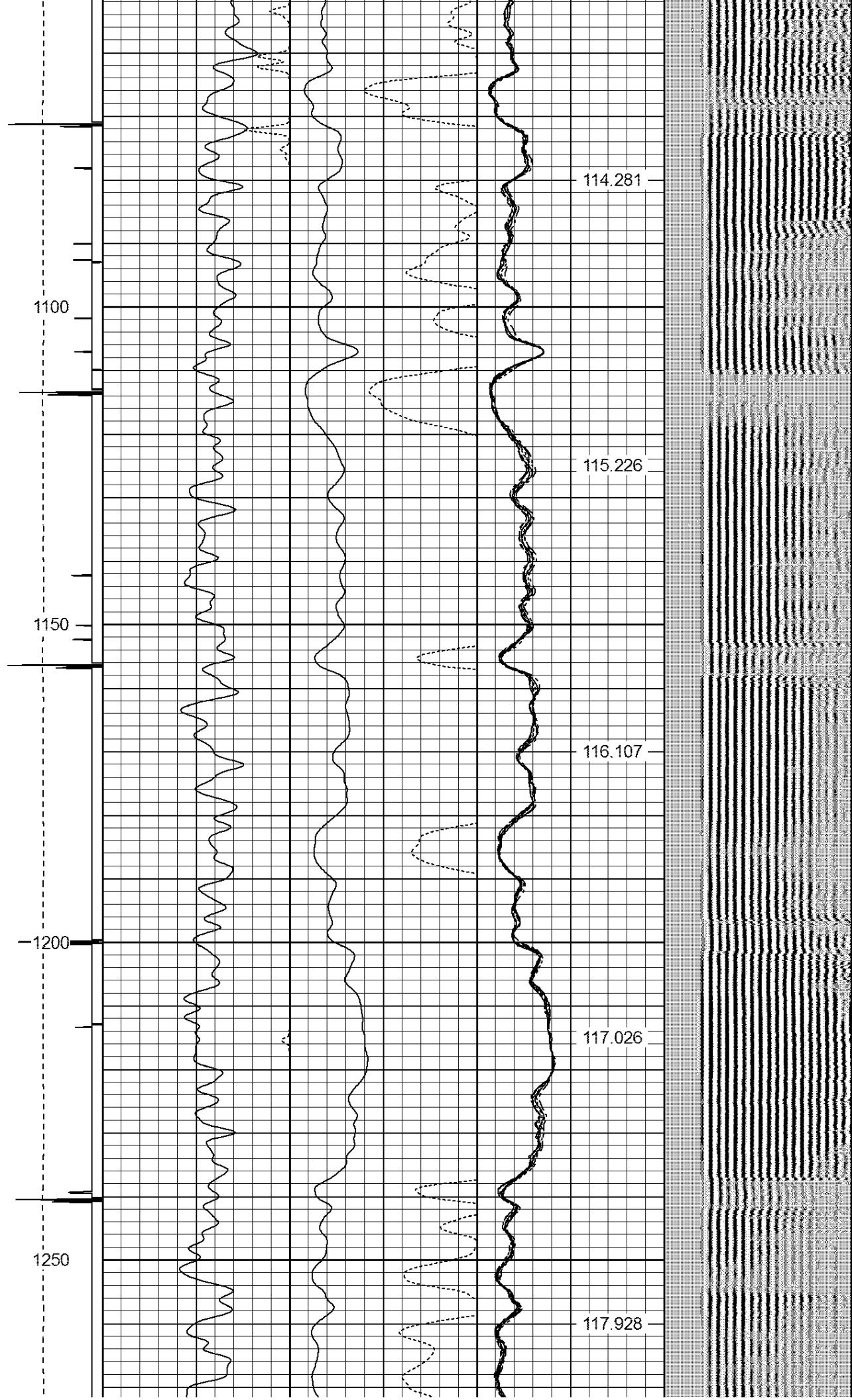


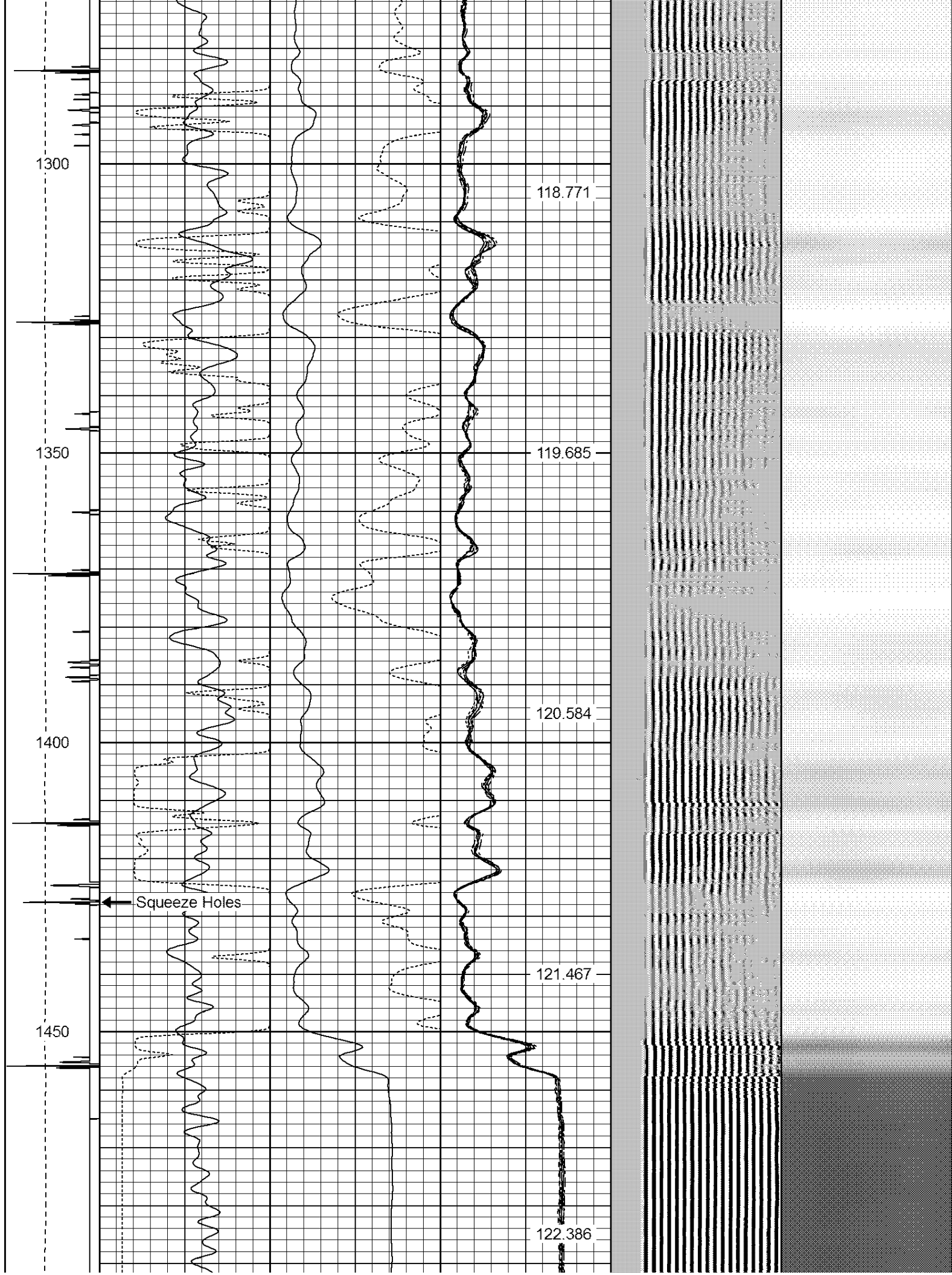




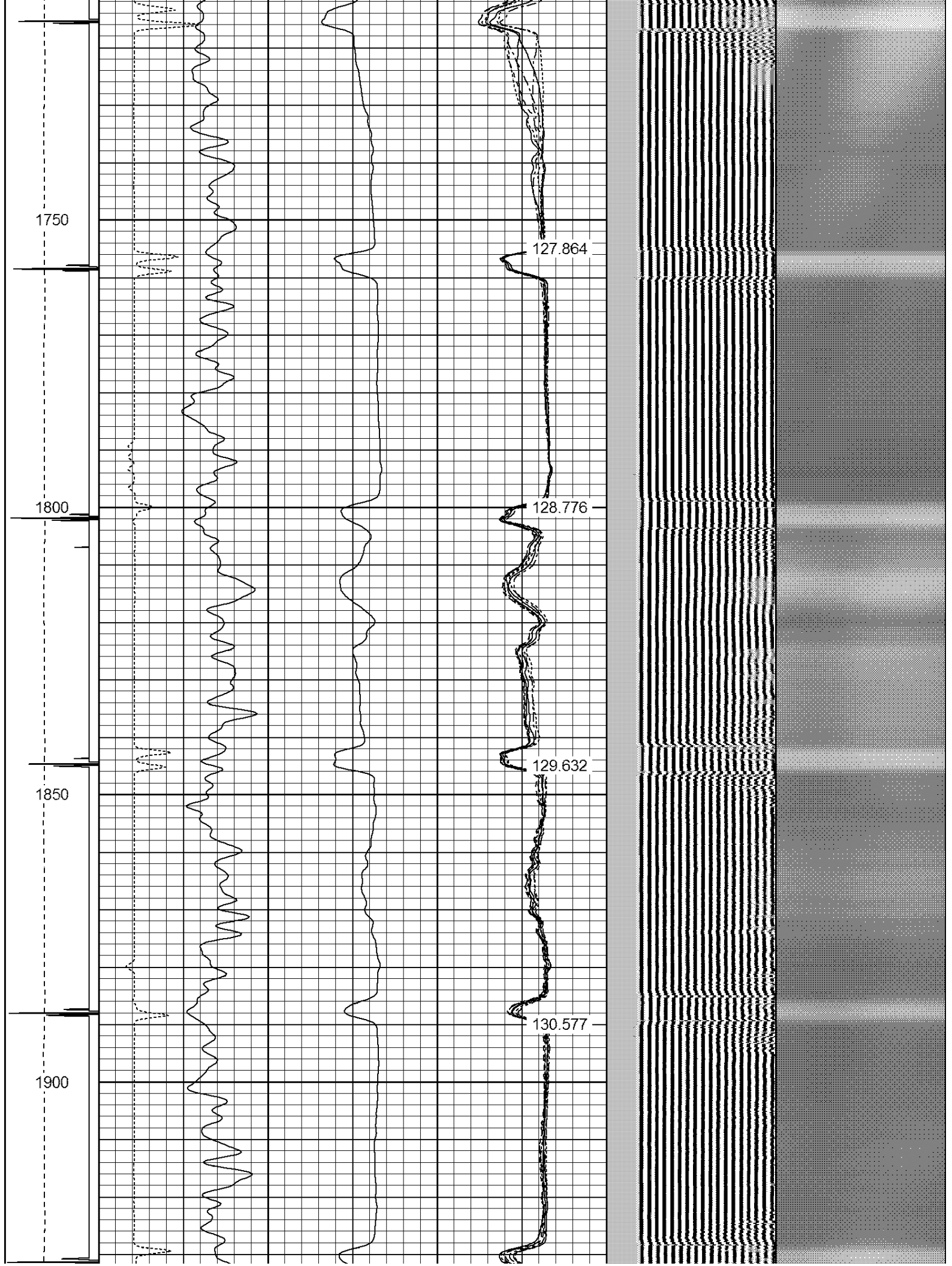


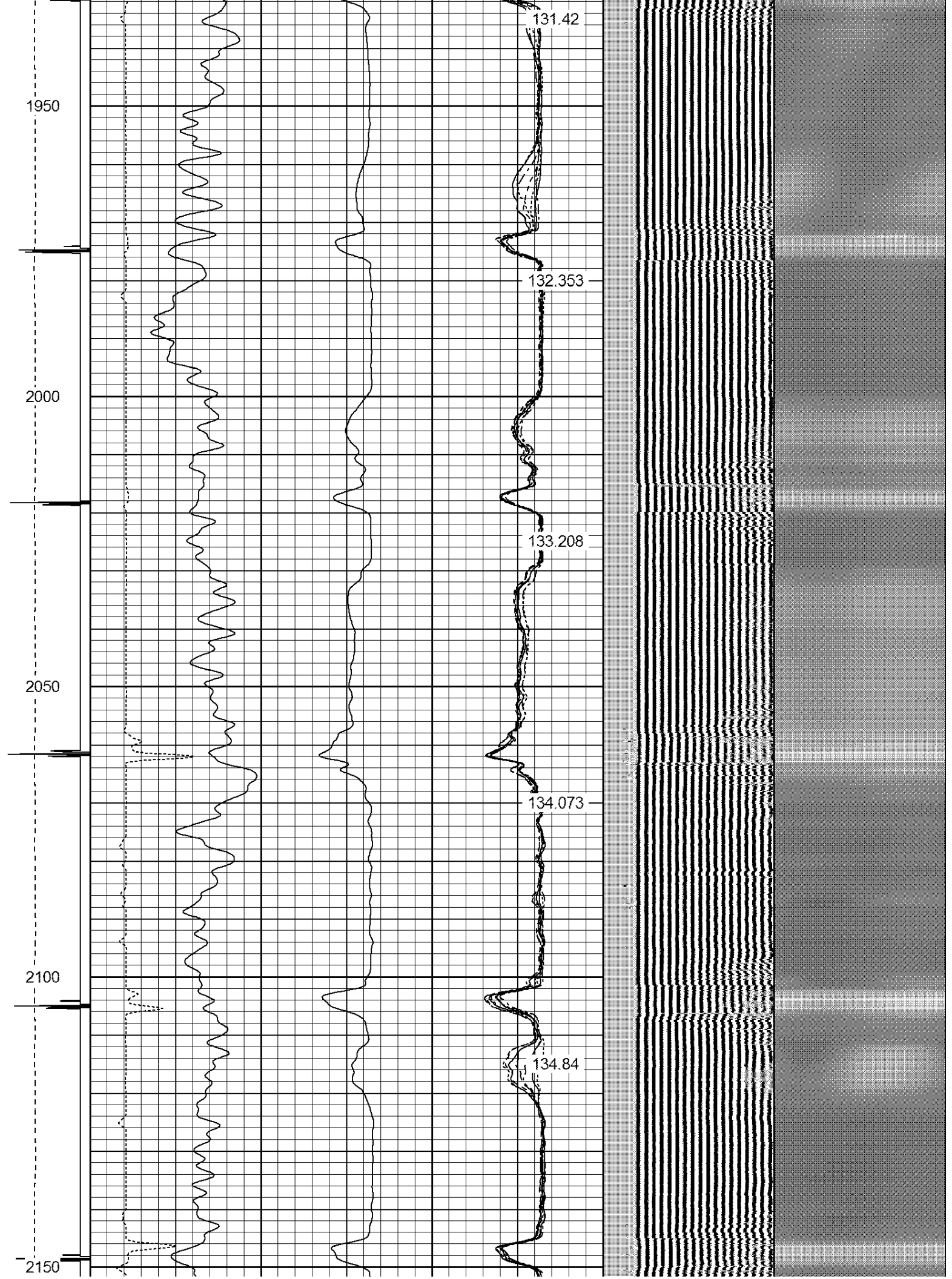


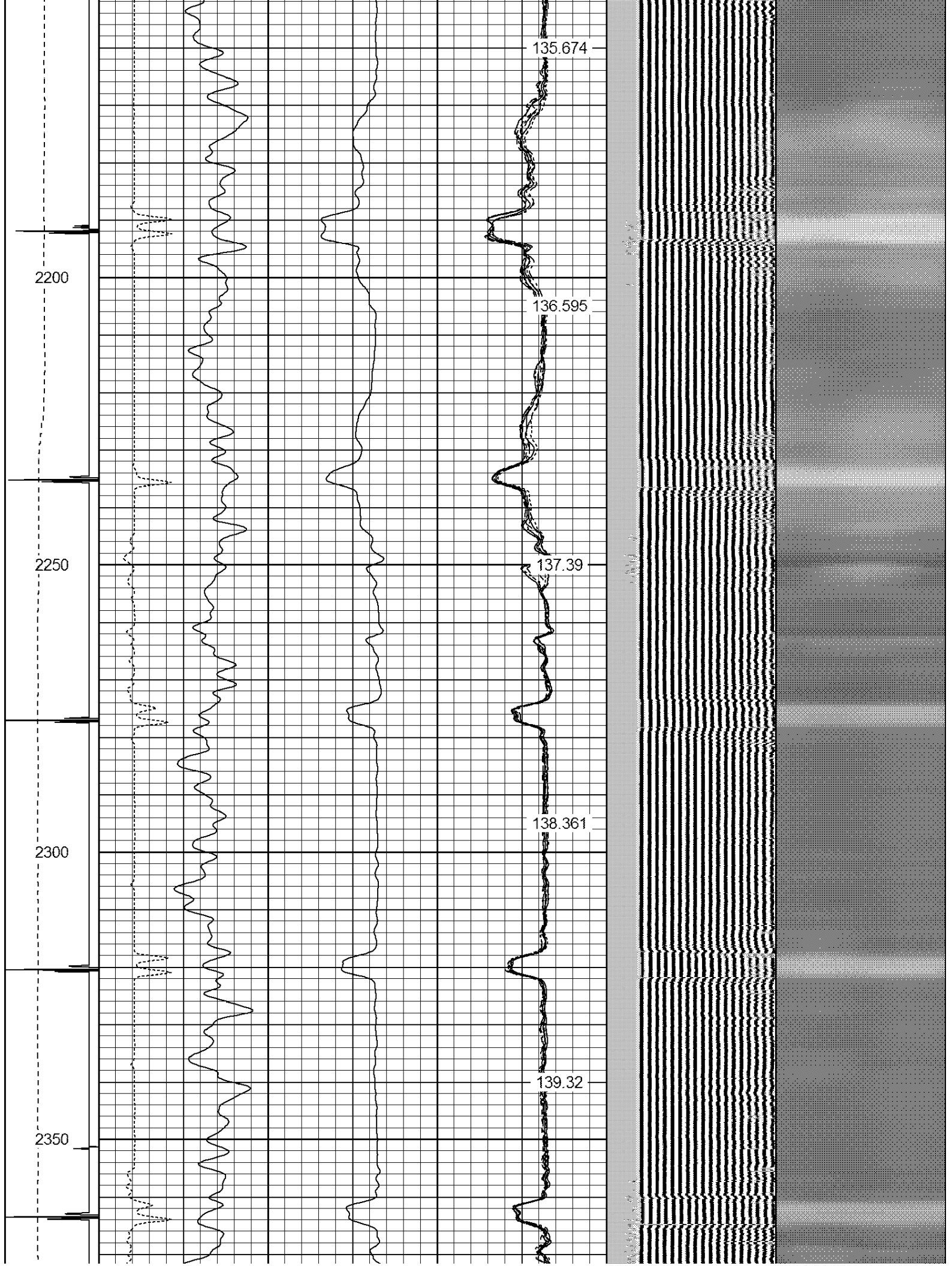


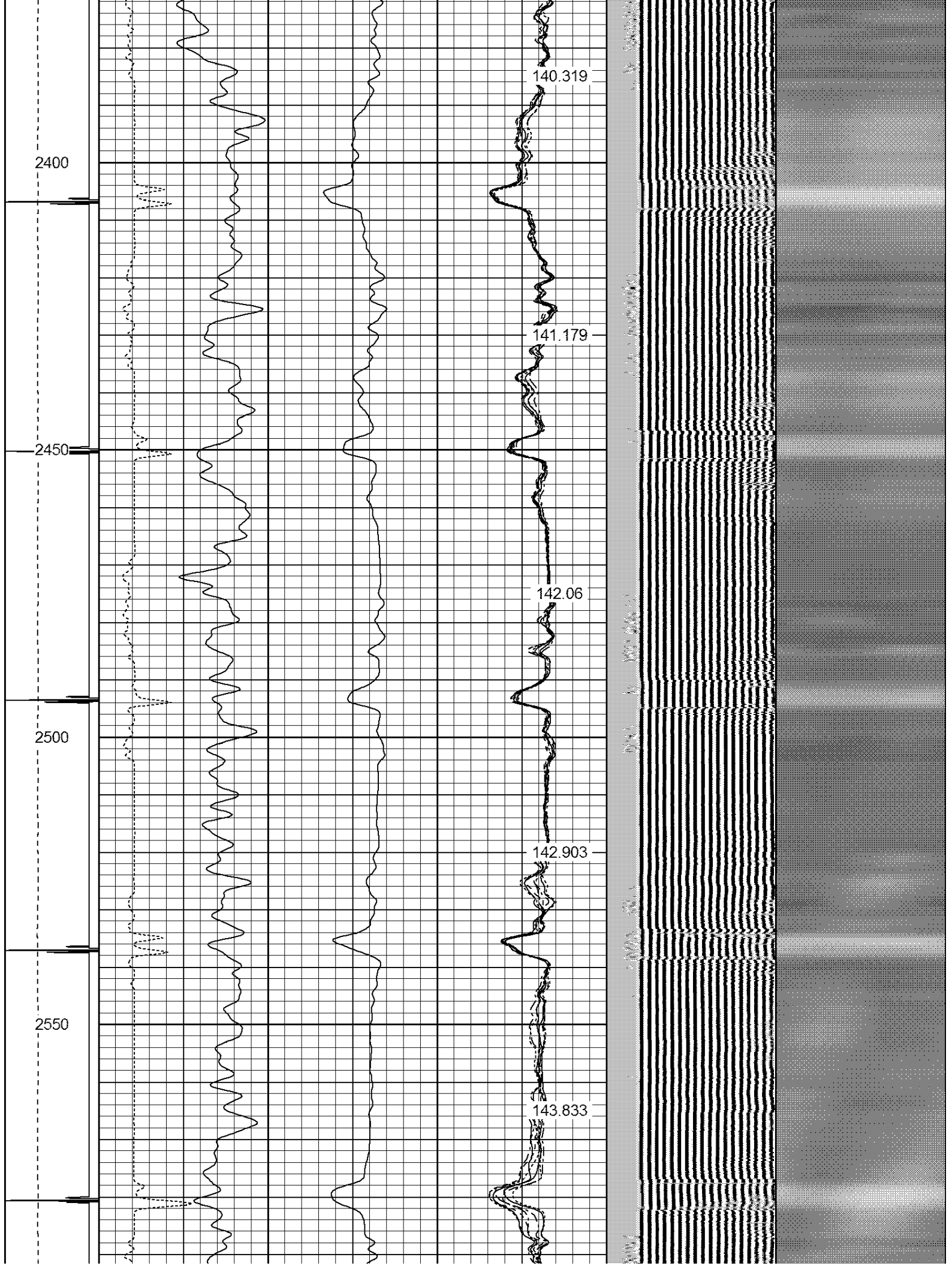




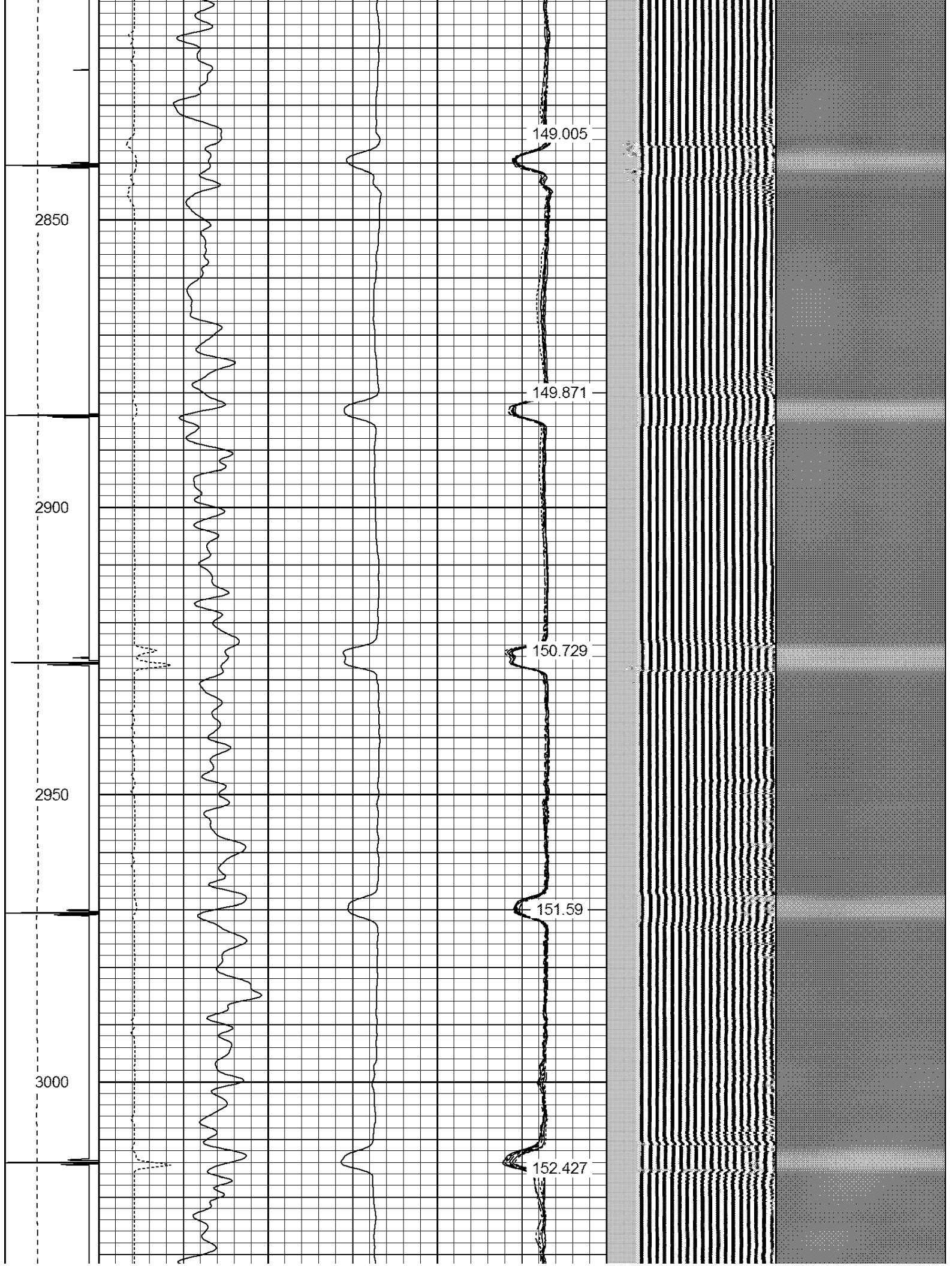






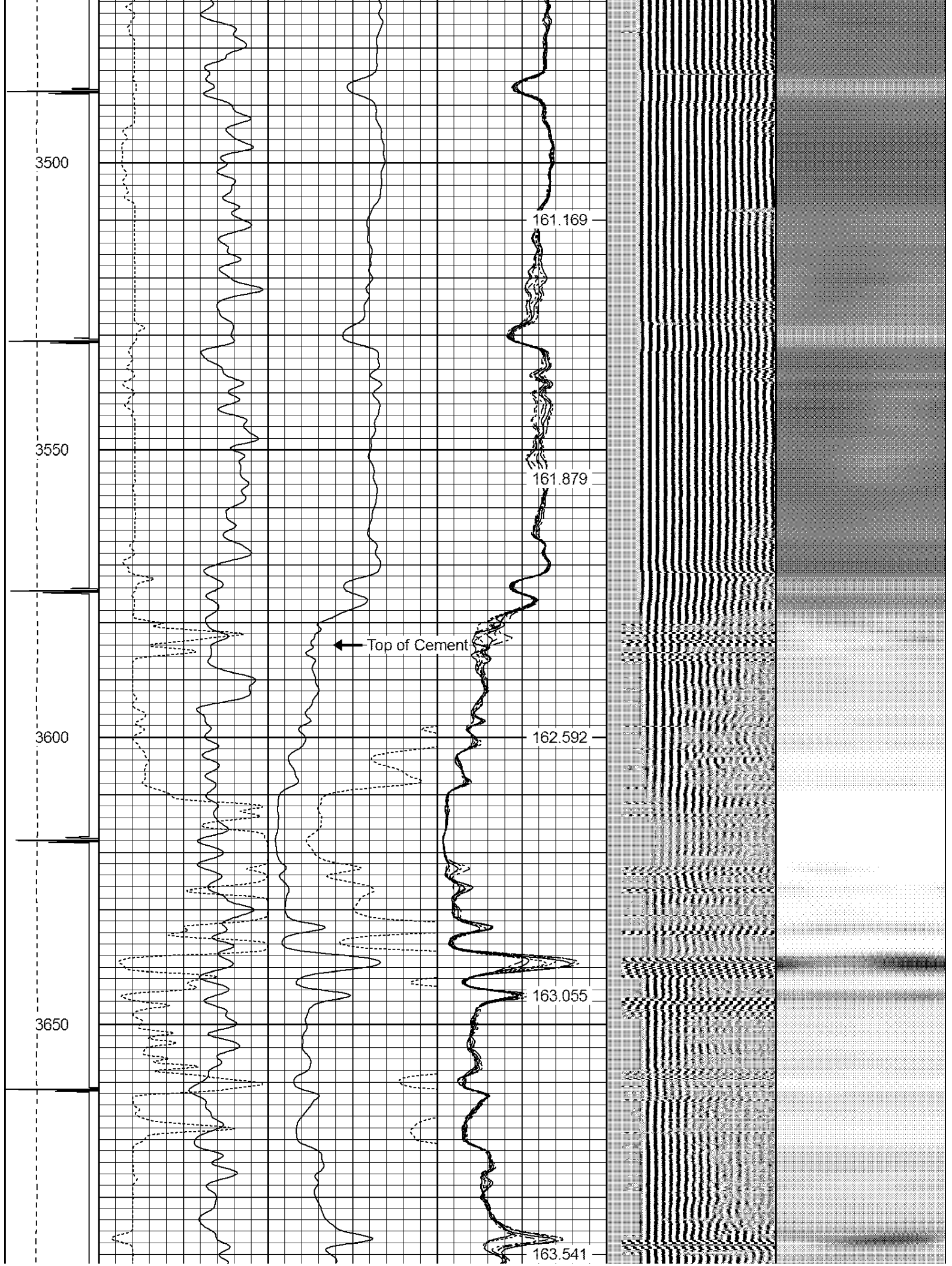


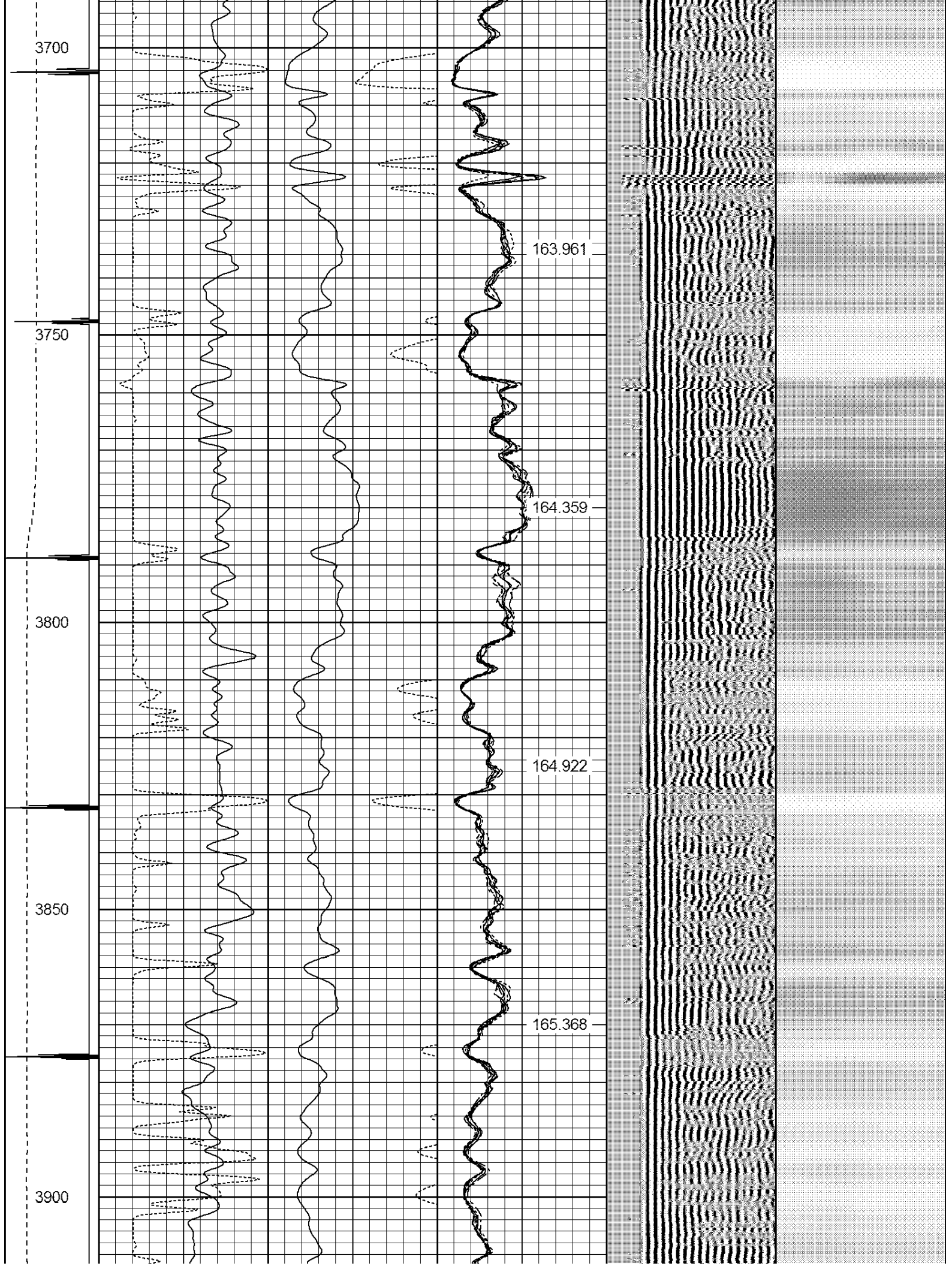


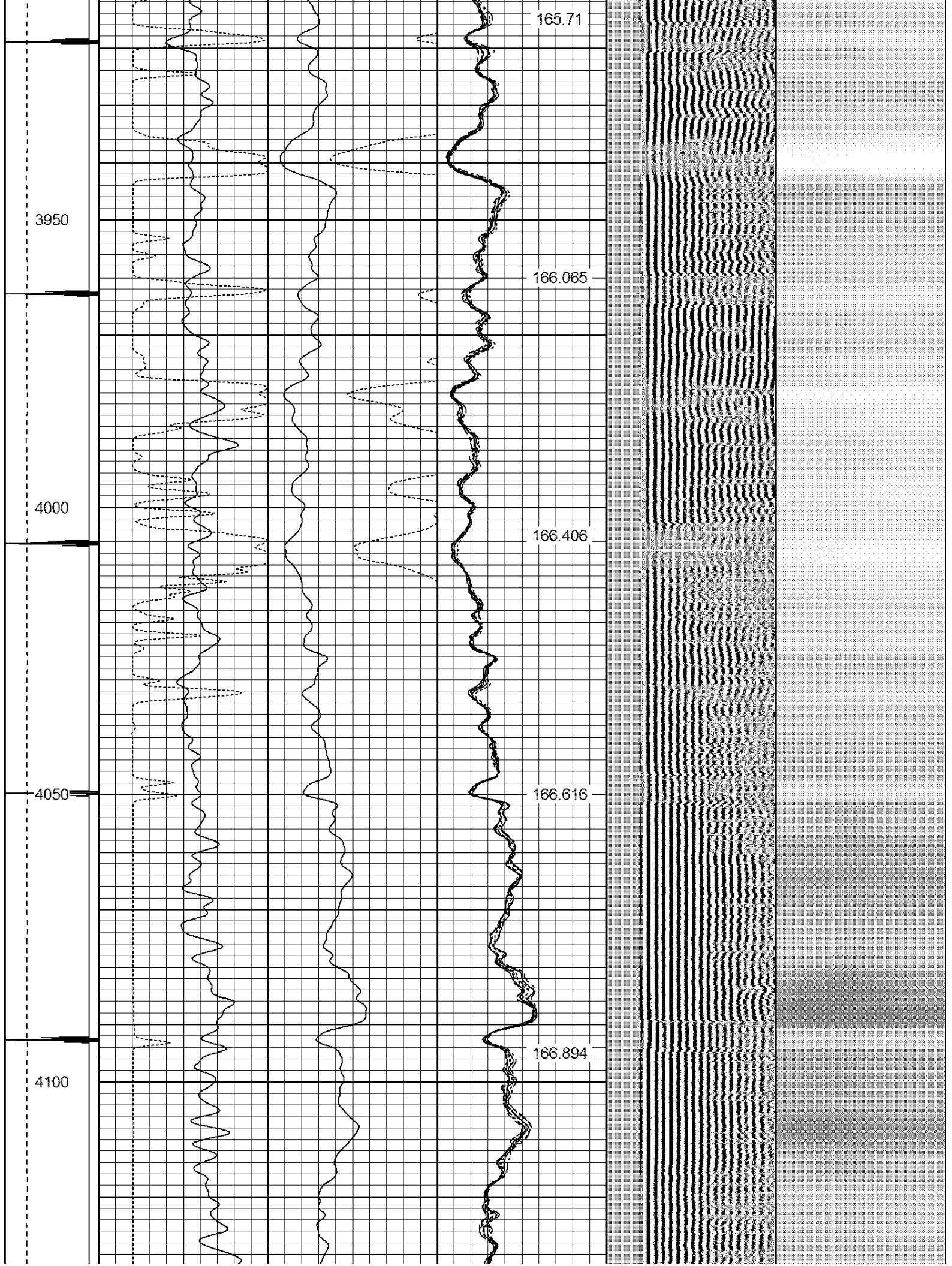


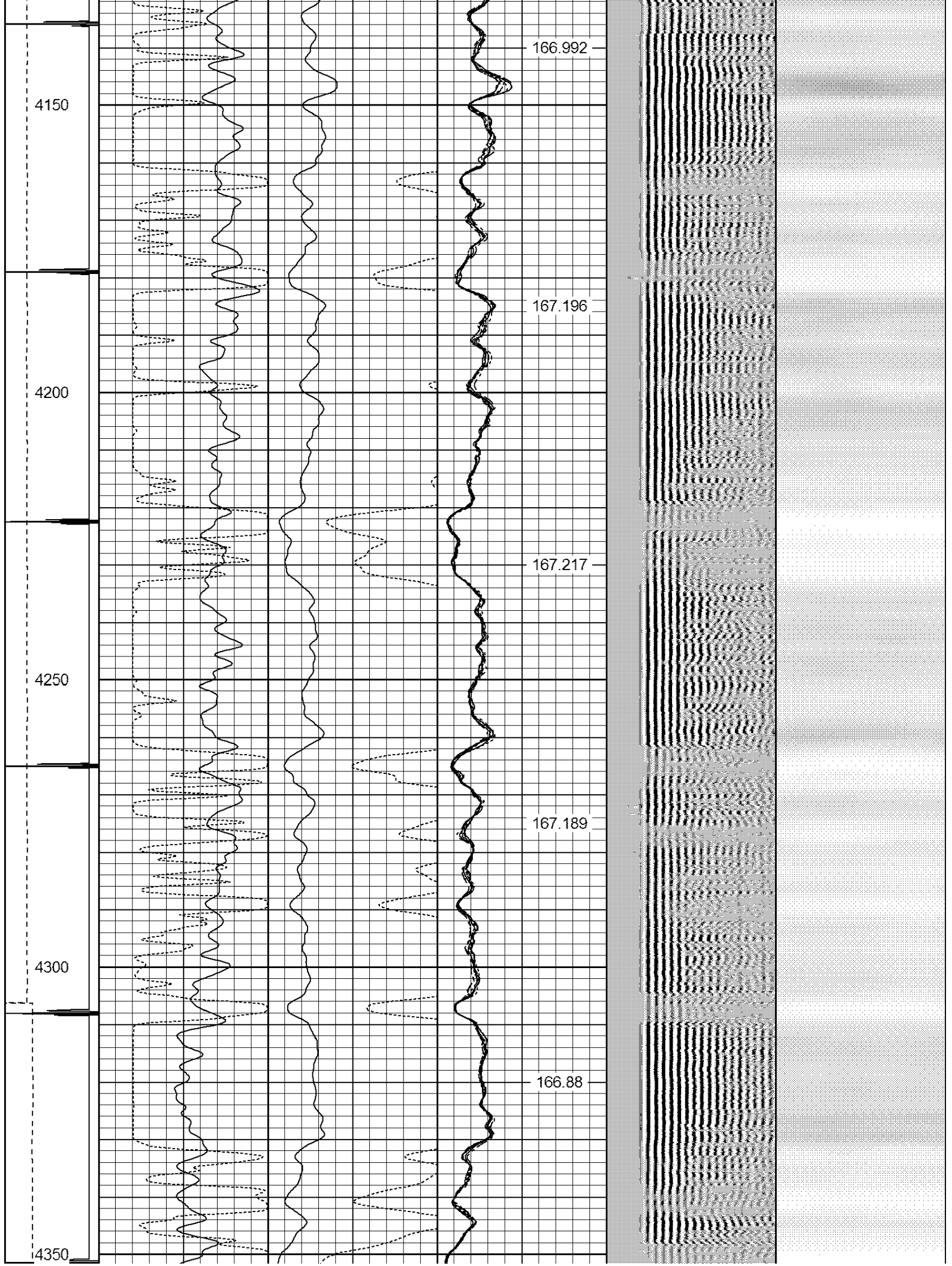


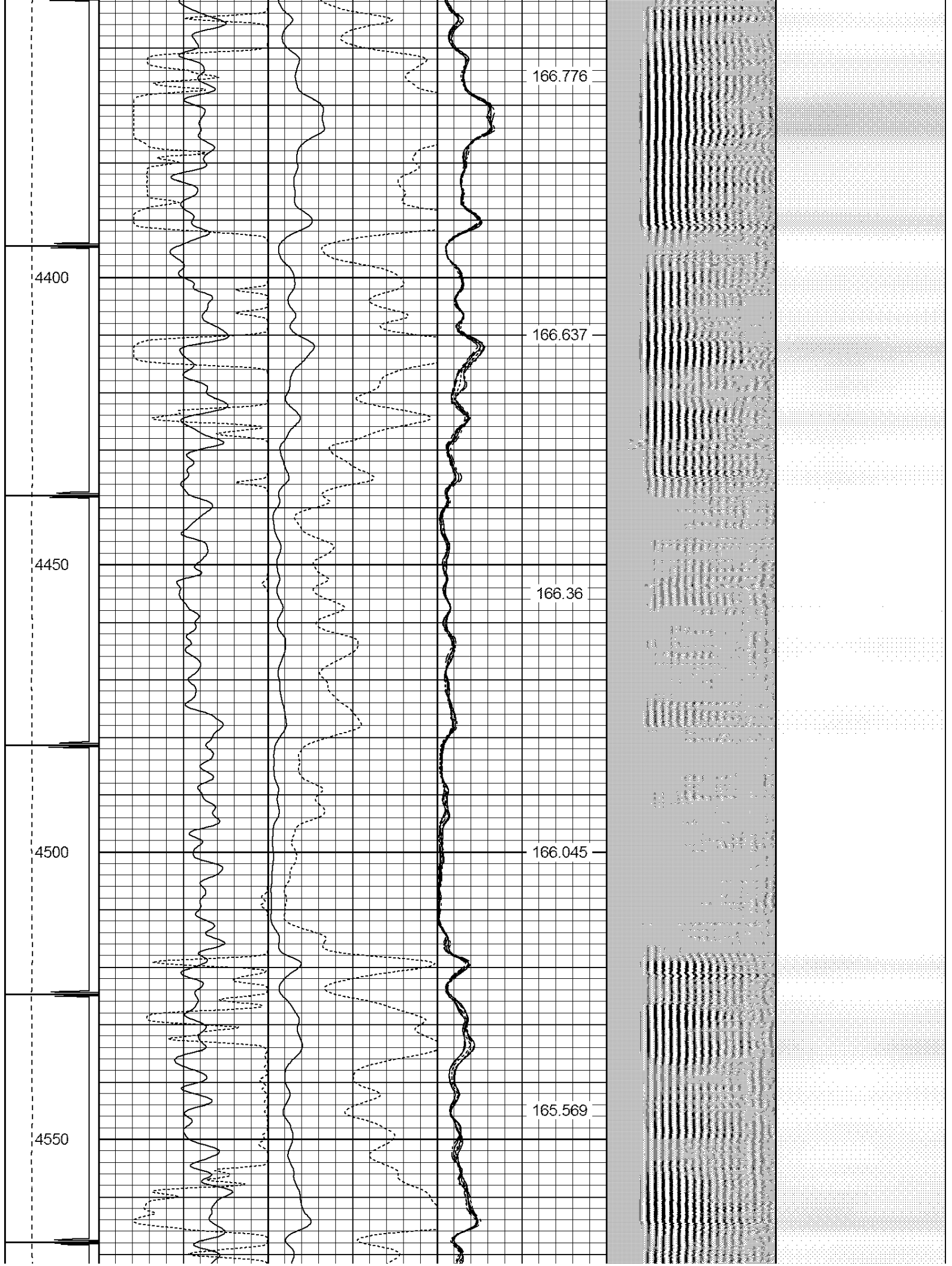


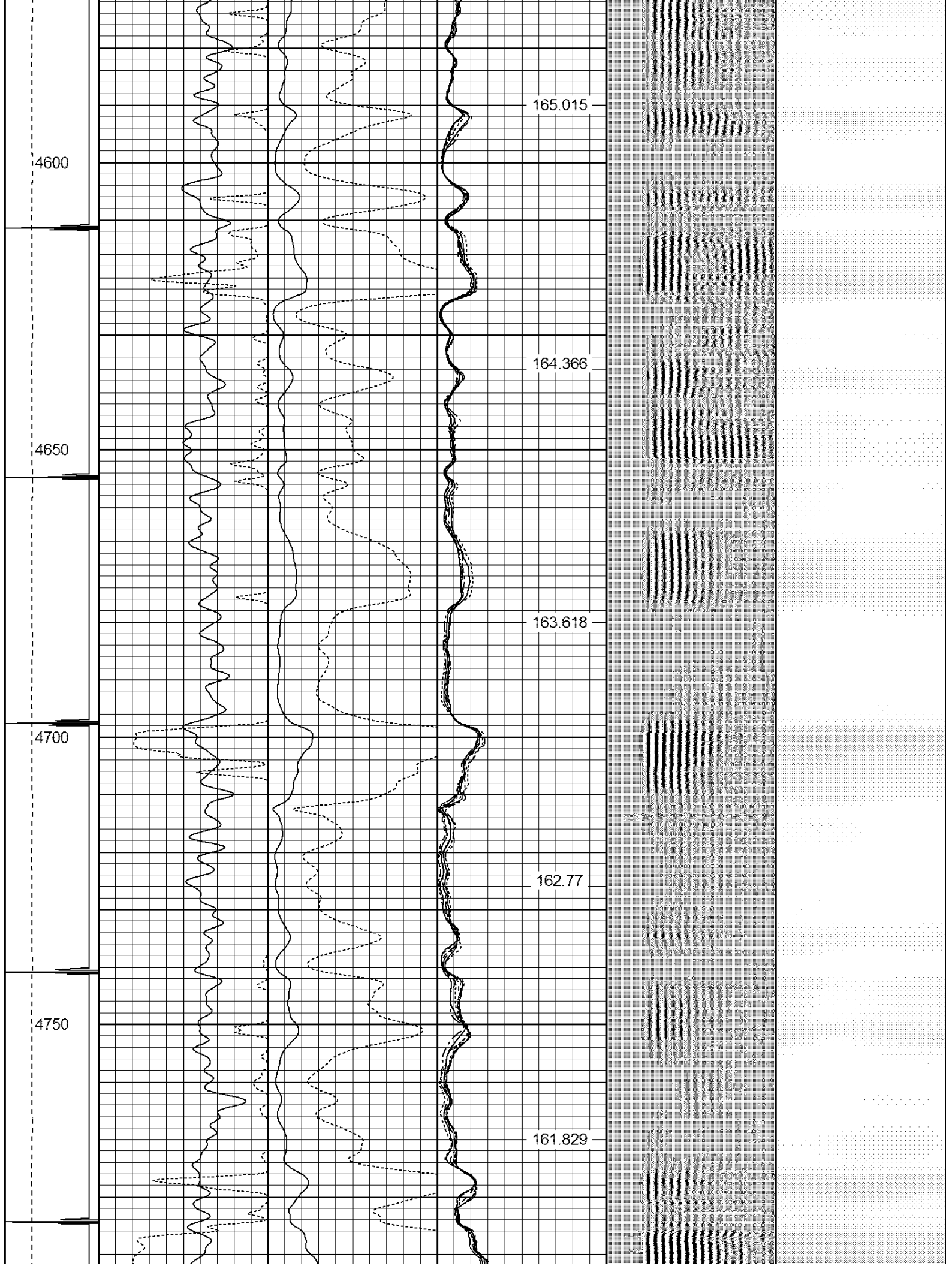


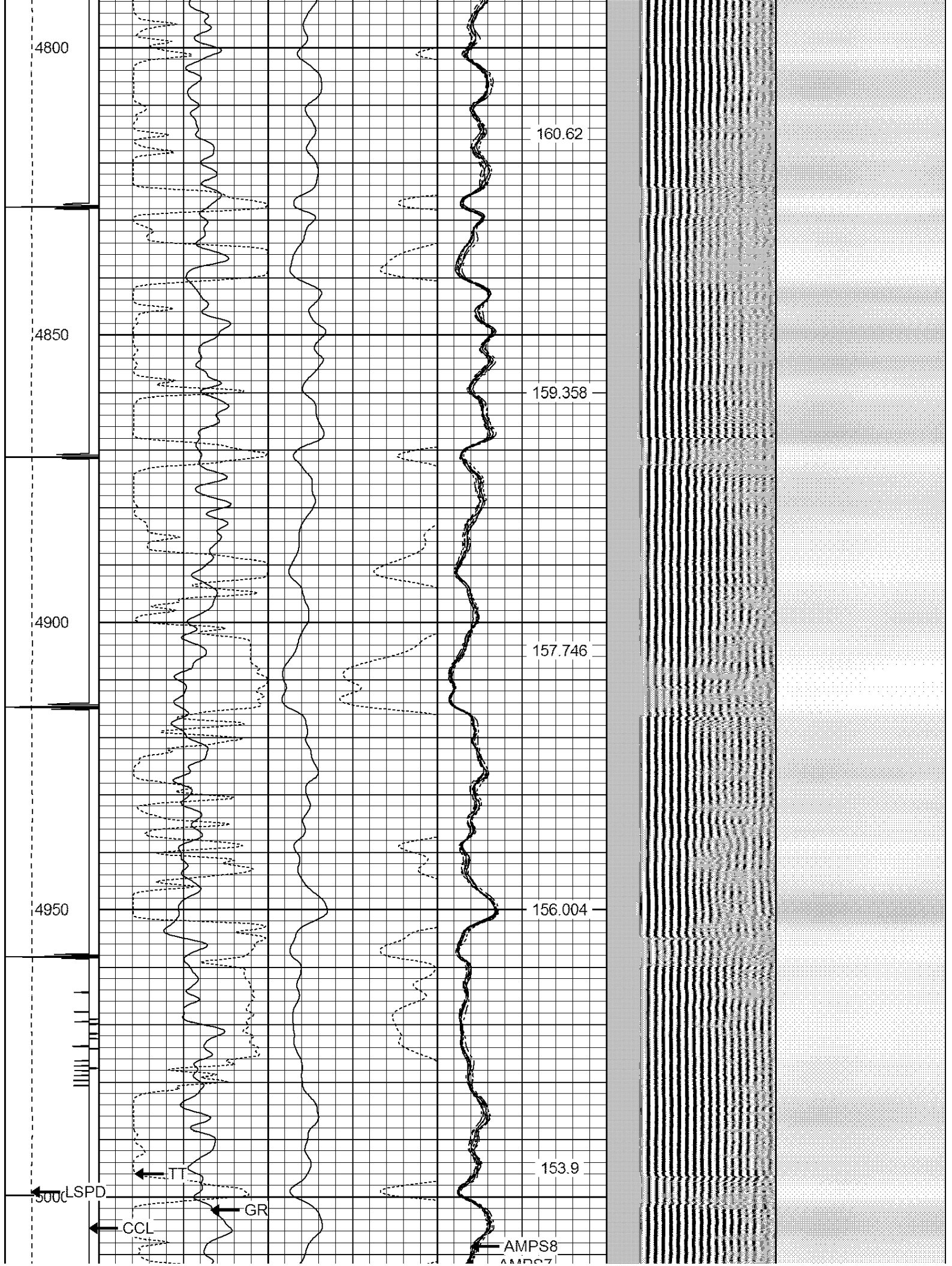


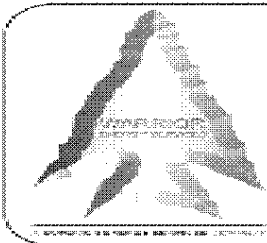
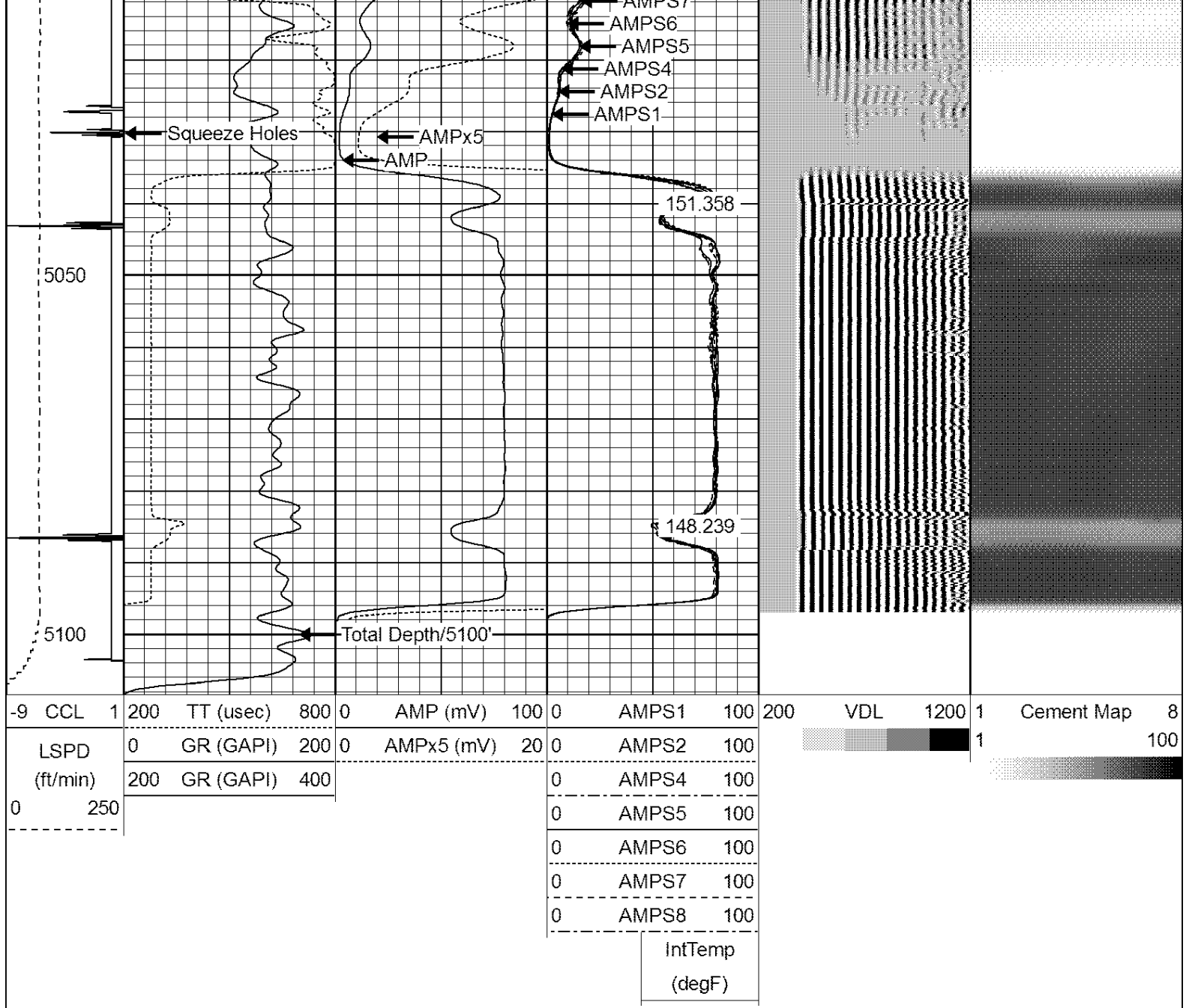












WARRIOR
ENERGY SERVICES

Company KERR-McGEE OIL & GAS ONSHORE LP

Well EISENACH & PRESTON 8-7K

Field WATTENBERG

County WELD

State COLORADO