

RADIAL CEMENT BOND
GAMMA RAY
CCL

Company KERR MCGEE OIL AND GAS					
Well EISENACH & PRESTON 8-7K					
Field WATTENBERG					
County WELD State CO					
Location: API #: 05-123-15836 SHL 2028' FNL & 1992' FEL SW/N/E					
SEC 8 TWP 3N RGE 66W					
Elevation 4860'					
Permanent Datum GL KB 11'					
Log Measured From KB					
Drilling Measured From KB					
Date	4-10-14				
Run Number	ONE				
Depth Driller	7496'				
Depth Logger	4740'				
Bottom Logged Interval	4737'				
Top Log Interval	3392'				
Open Hole Size	7.875				
Type Fluid	WATER				
Density / Viscosity	1.0				
Max. Recorded Temp.	167				
Estimated Cement Top	3584'				
Time Well Ready	N/A				
Time Logger on Bottom	N/A				
Equipment Number	4310				
Location	GREELEY				
Recorded By	N. BREHMER				
Witnessed By	J. CHANDLER				
Borehole Record					
Run Number	Bit	From	To	Size	Tubing Record
				Weight	From To
Casing Record	Size	Vgt/Ft	Top	Bottom	
Surface String	8.63	23#	0	518'	
Prot. String					
Production String	4.5	11.6#	0	7490'	
Liner					


<<< Fold Here >>>

All interpretations are opinions based on inferences from electrical or other measurements and we cannot and do not guarantee the accuracy or correctness of any interpretation, and we shall not, except in the case of gross or willful negligence on our part, be liable or responsible for any loss, costs, damages, or expenses incurred or sustained by anyone resulting from any interpretation made by any of our officers, agents or employees. These interpretations are also subject to our general terms and conditions set out in our current Price Schedule.



Comments

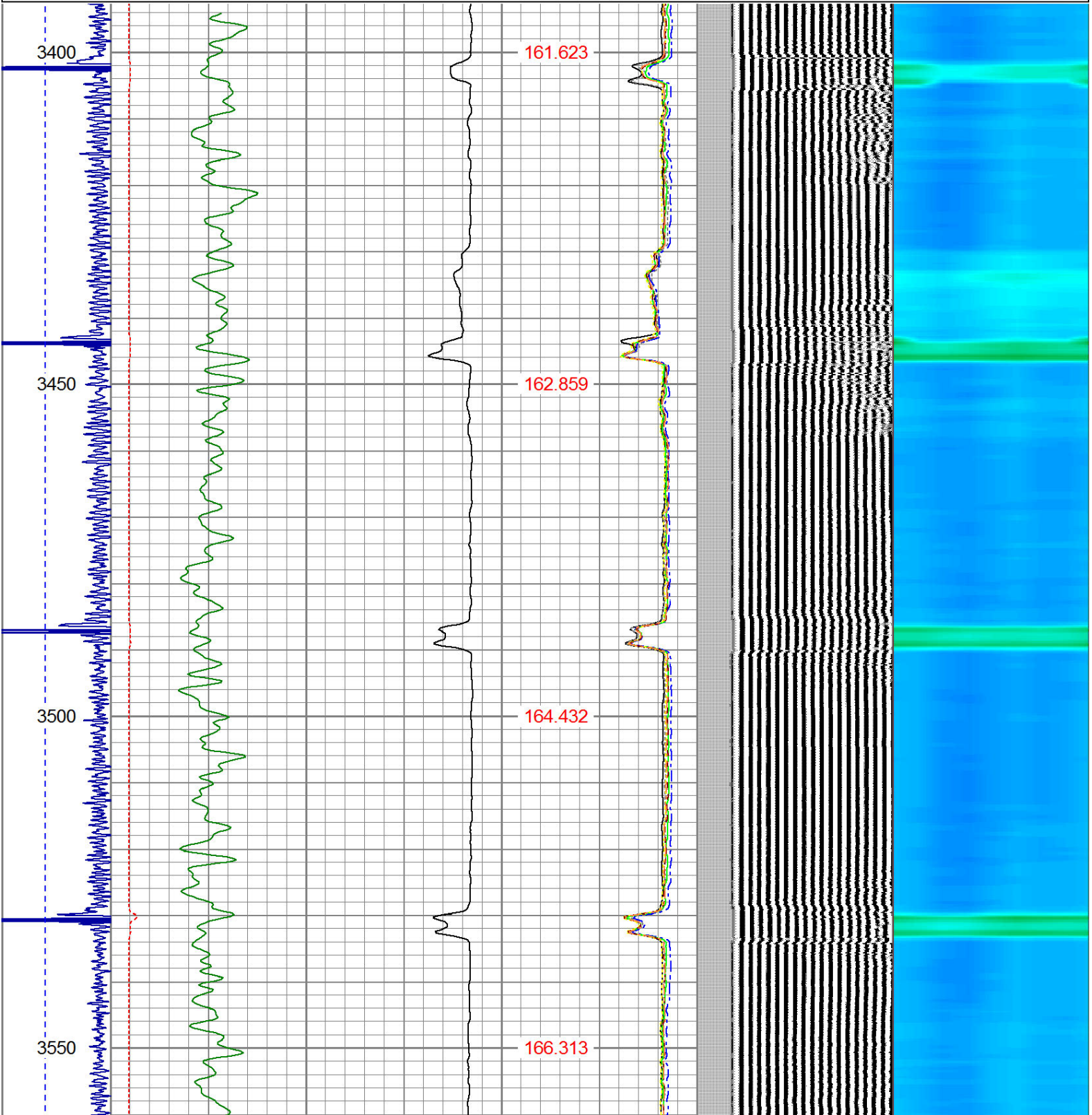
RAN CBL TO VERIFY CEMENT BOND

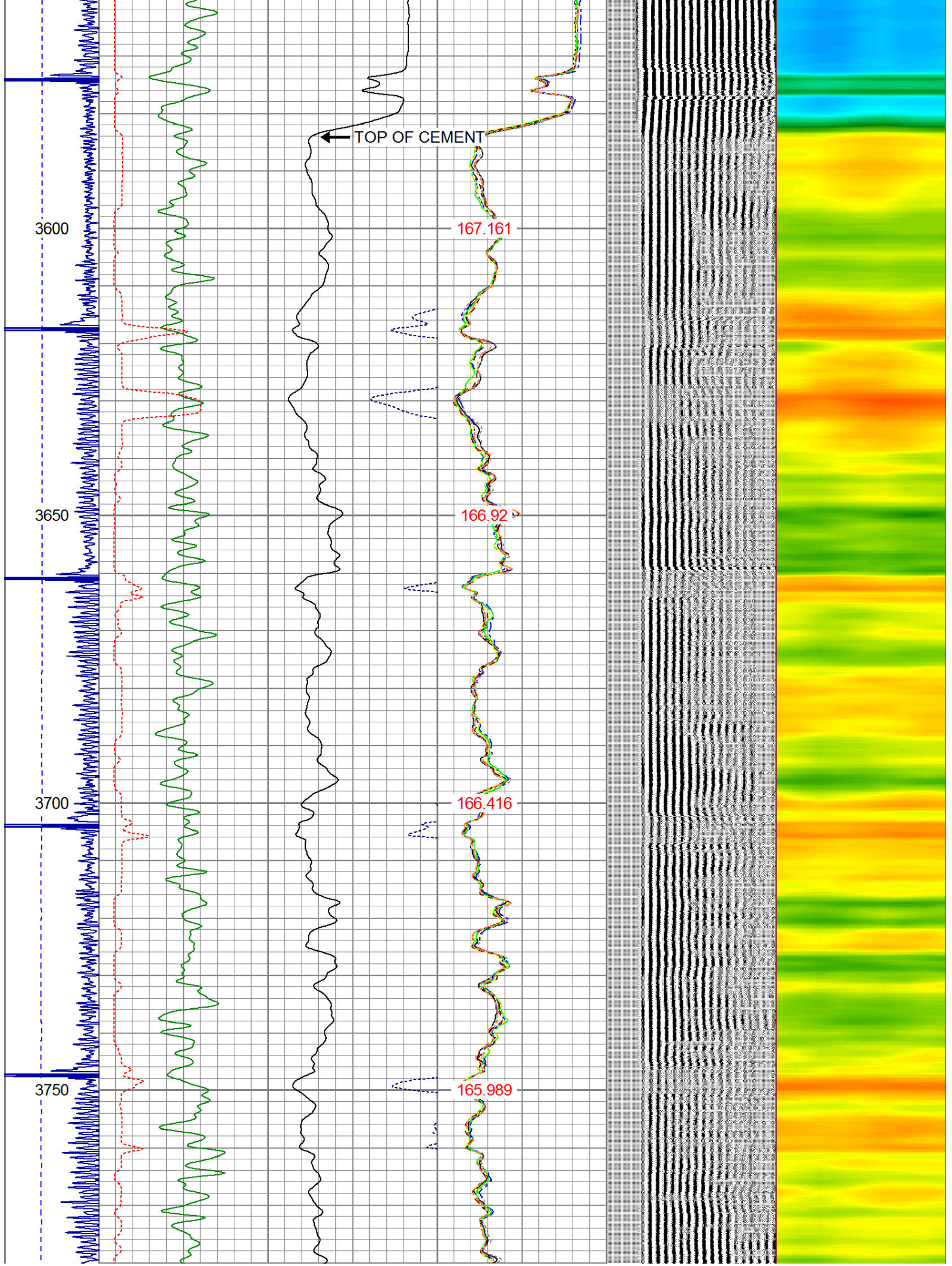
THANK YOU FOR USING WARRIOR !!!!!!!

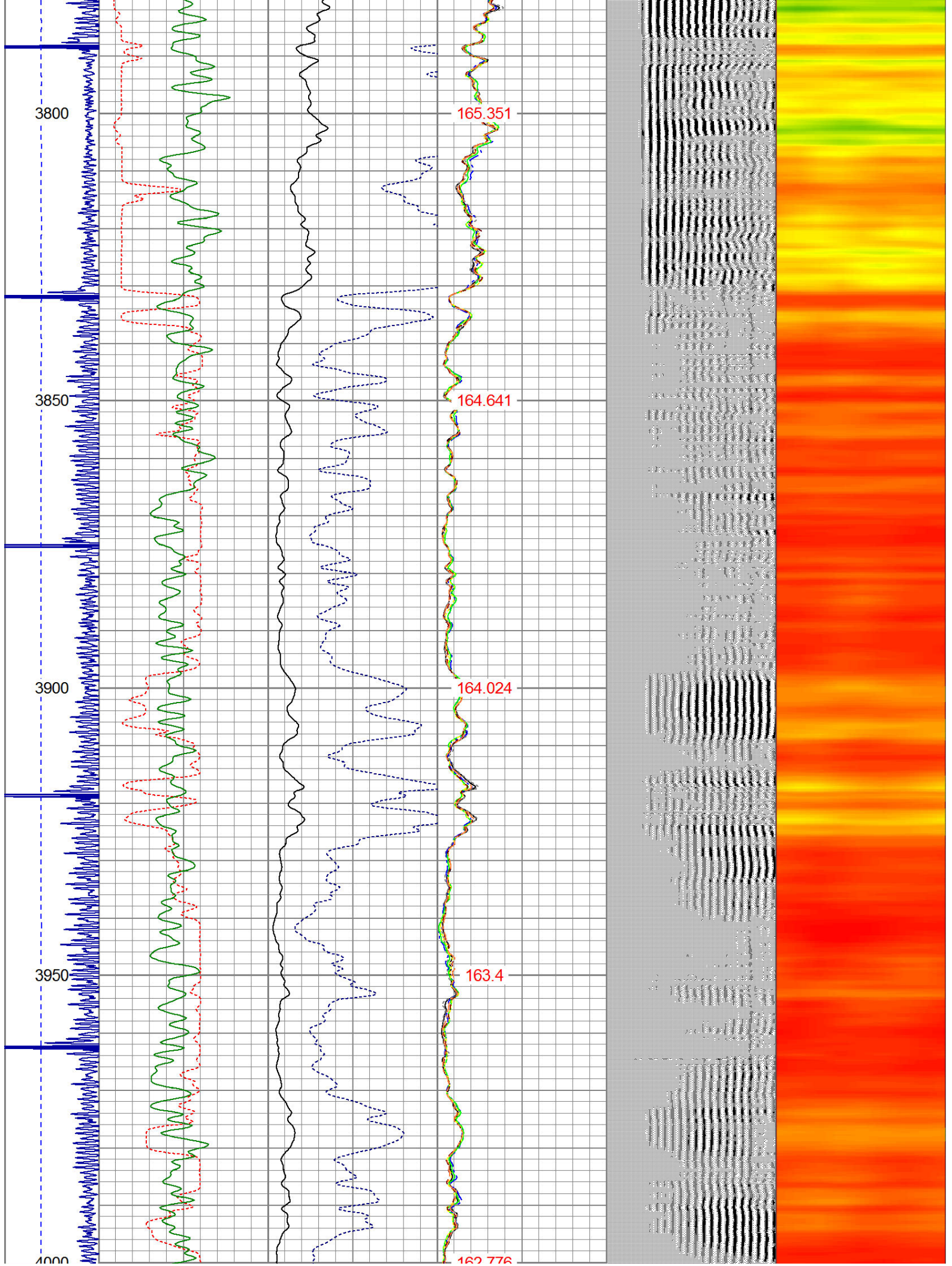
Sensor	Offset (ft)	Schematic	Description	Len (ft)	OD (in)	Wt (lb)
						

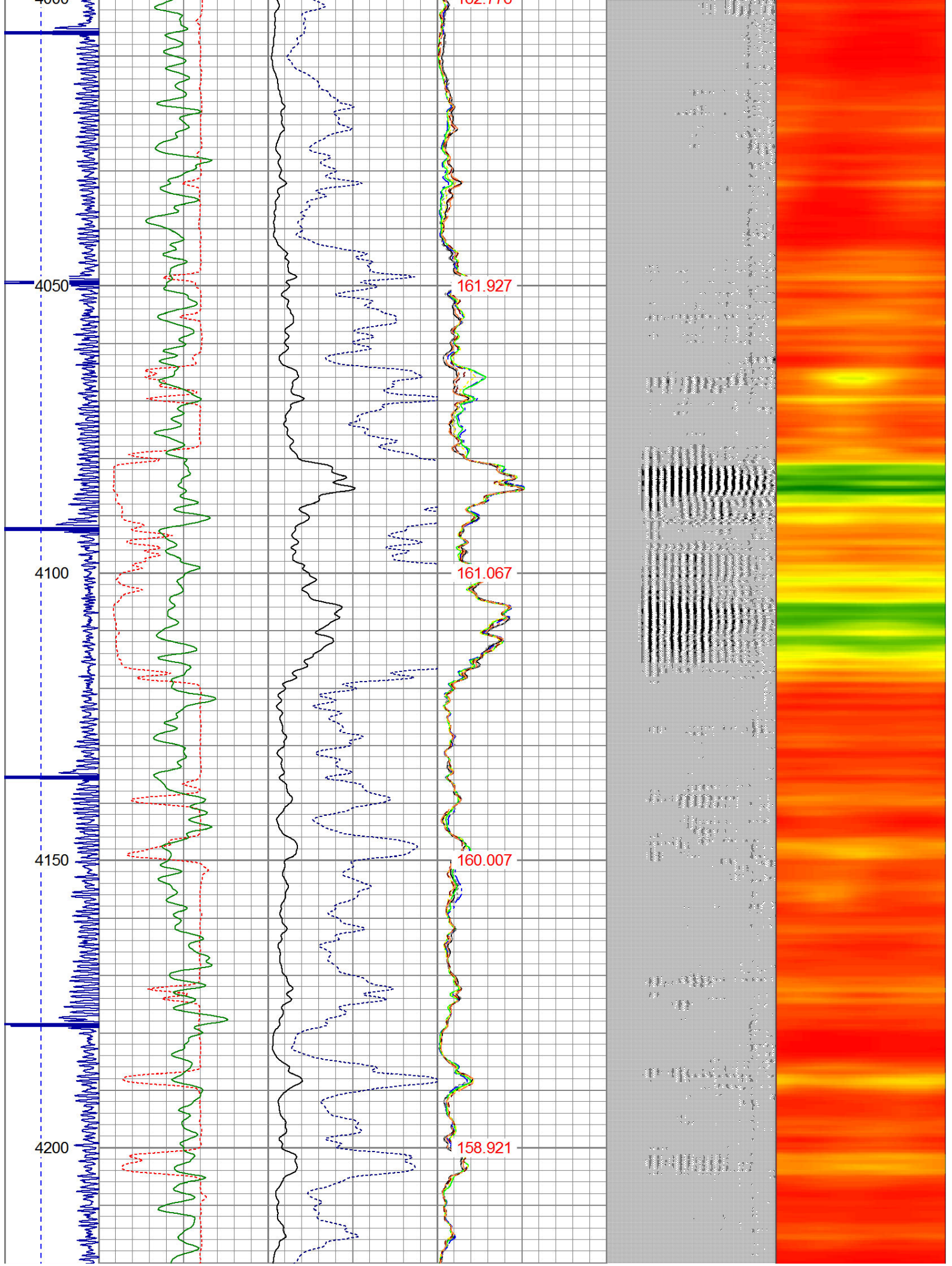
			PTS275	2.83	2.75	
HEADVOLT	16.13					
IntTemp	14.71					
WVF3FT	11.46		RBT-Probe (Base)	8.92	2.75	90.00
WVFCAL	11.46		Probe Radii Bond Tool with Digital Telemetry			
WVFS1	11.46					
WVFS2	11.46					
WVFS3	11.46					
WVFS4	11.46					
WVFS5	11.46					
WVFS6	11.46					
WVFS7	11.46					
WVFS8	11.46					
WVF5FT	10.46					
CNLSC	6.00		CNT-Probe_B (275)	2.88	2.75	40.00
CNSSC	5.17		6 bow centralizer			
CCL	3.64					
			GR-Probe (275)	4.33	2.75	30.00
			Probe 2.75"			
GR	0.90					
Dataset: eisenach & preston 8-7k.db: field/well/run1/pass2 Total Length: 18.96 ft Total Weight: 160.00 lb O.D. 2.75 in						

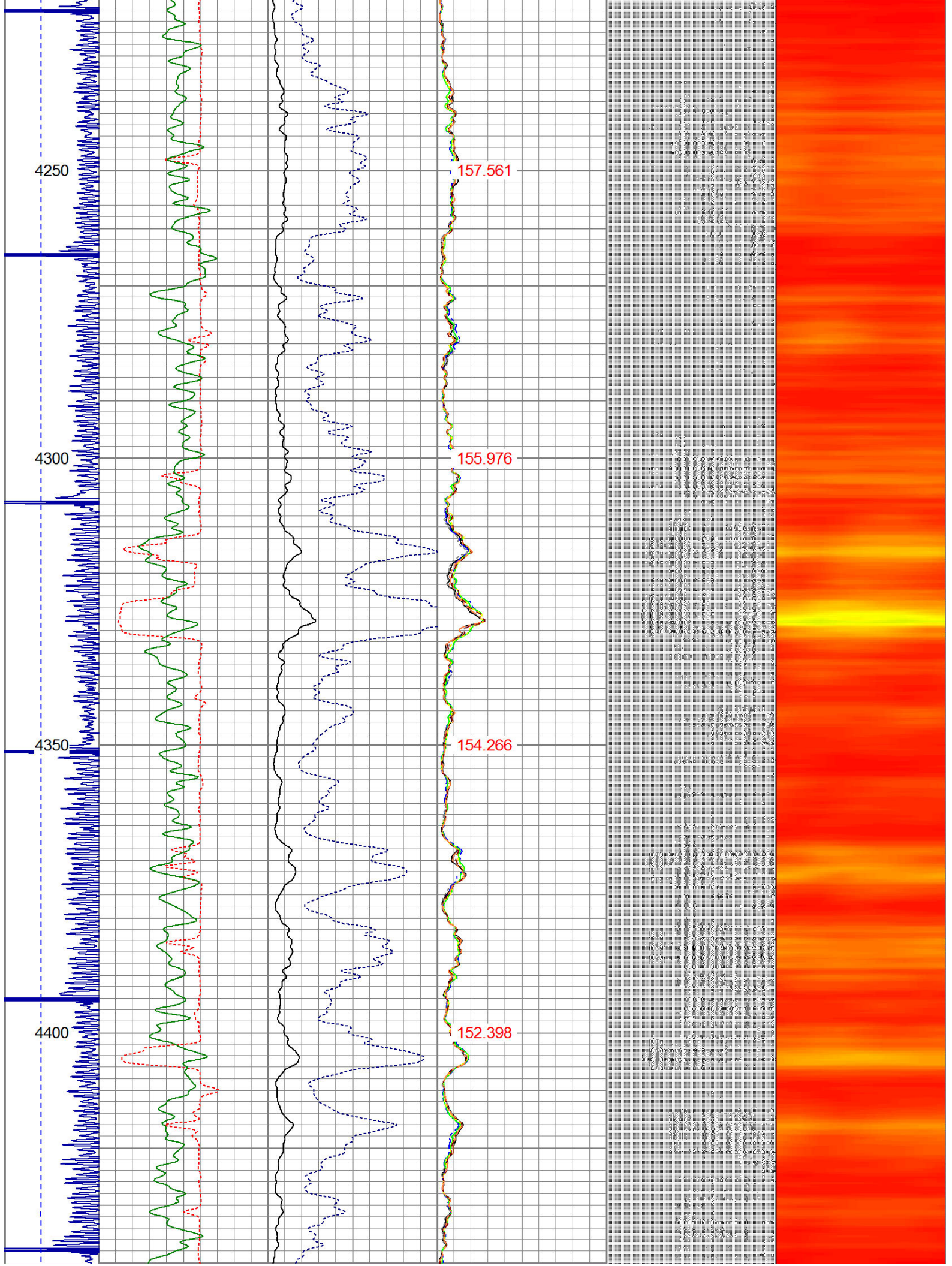
Dataset Creation: Thu Apr 10 07:30:37 2014 by Log 7.0 B1																														
Charted by: Depth in Feet scaled 1:240																														
-9	CCL	1	200	TT (usec)	1200	0	AMP (mV)	100	0	AMPS1	100	200	VDL	1200	1	Cement Map	8													
LSPD (ft/min)	0		0	GR (GAPI)	200	0	AMPx5 (mV)	20	0	AMPS2	100			1			100													
	200		200	GR (GAPI)	400			0	AMPS4	100																				
	0		0					0	AMPS5	100																				
										0	AMPS6	100																		
										0	AMPS7	100																		
										0	AMPS8	100																		
										IntTemp																				
										(degF)																				

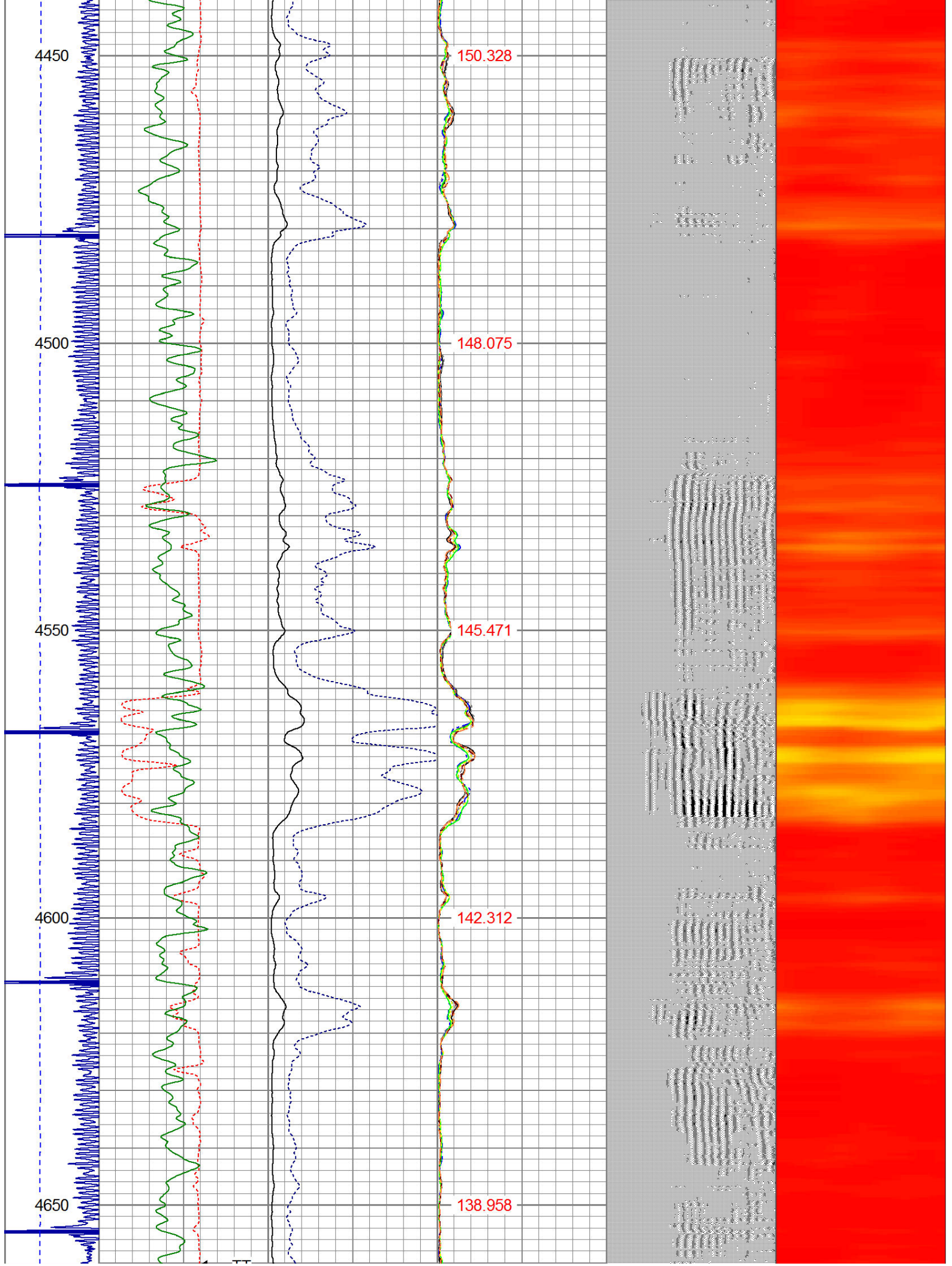


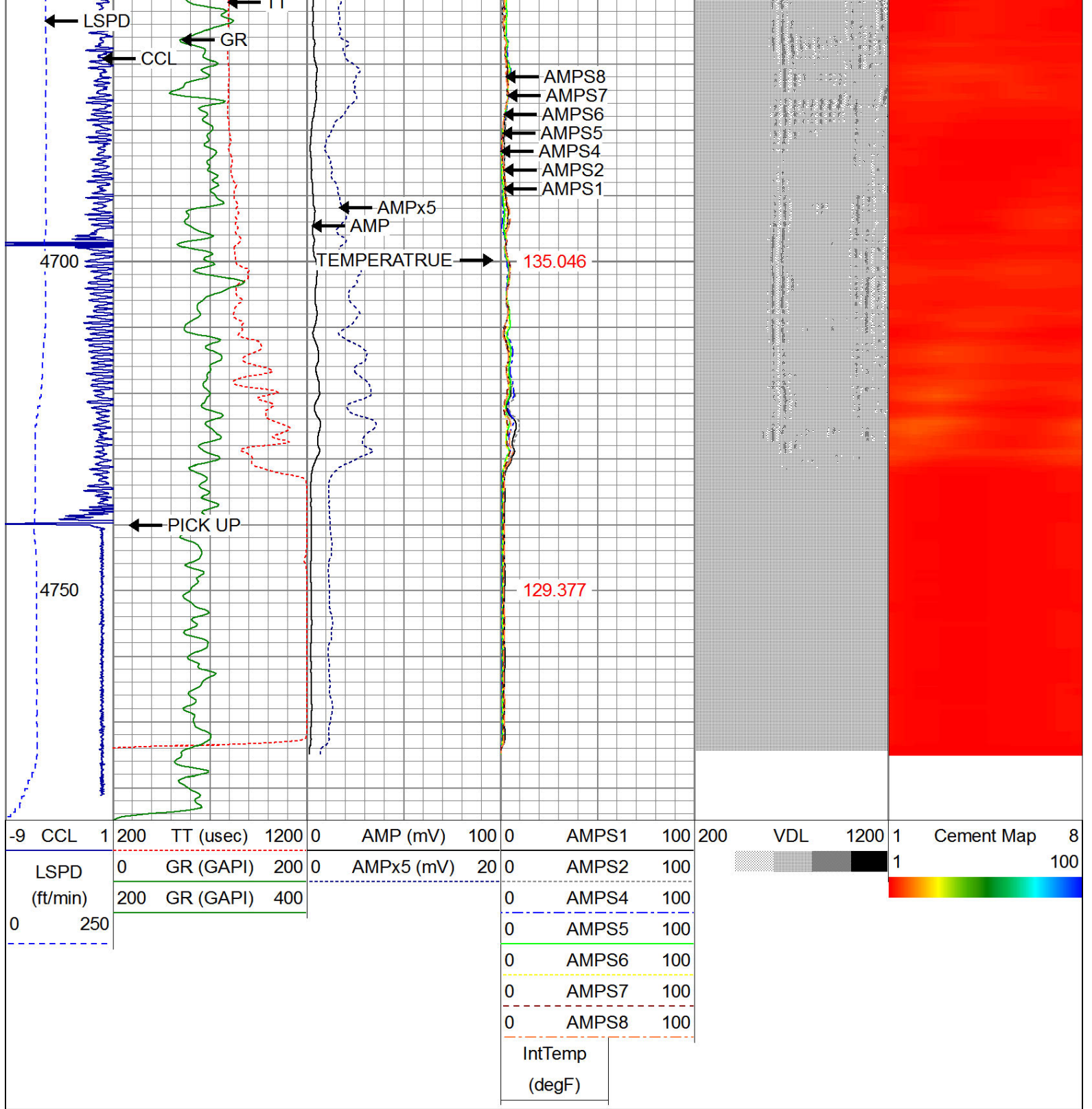












WARRIOR
ENERGY SERVICES

Company KERR McGEE OIL AND GAS
Well EISENACH & PRESTON 8-7K
Field WATTENBERG
County WELD
State CO