

T10N, R58W, 6th P.M.

WHITING OIL & GAS CORP.

2013 UELS Alum. Cap.
#28285, 0.5' Below Ground
Lat: 40.860494°
Long: 103.861425°

S89°48'48"W - 2635.65' (Meas.)

S89°48'48"W - 2635.65' (Meas.)

2012 UELS Alum.
Cap, 0.3' High
Lat: 40.860544°
Long: 103.842372°

Target Bottom Hole

2013 UELS Alum. Cap.
#28285, 0.3' High
Lat: 40.860519°
Long: 103.851900°

N04°30'40"W
6980.72'

S00°05'43"E - 2650.24' (Meas.)

2012 UELS Alum.
Cap, 0.3' High
Lat: 40.853272°
Long: 103.842356°

RAZOR #10H-0313A
Elev. Ungraded Ground = 5051'

2013 UELS Alum.
Cap, #28285,
0.5' Below Ground
Lat: 40.853194°
Long: 103.861314°

N00°38'41"W - 2661.19' (Meas.)

S00°05'43"E - 2650.24' (Meas.)

NOTE:
THE PROPOSED TARGET BOTTOM HOLE FOR THIS
WELL IS LOCATED IN LOT 1 OF SECTION 3,
T10N, R58W, 6th P.M. AT 600' FNL 1155' FEL.
IT BEARS N04°30'40"W 6980.72' FROM THE
PROPOSED WELL HEAD.

S89°34'40"W - 2617.92' (Meas.)

2013 UELS Alum. Cap.
#28285, 0.3' High
Lat: 40.845944°
Long: 103.851800°

S89°34'40"W - 2617.92' (Meas.)

Stone
Lat: 40.846000°
Long: 103.842342°

LEGEND:

— = 90° SYMBOL

● = PROPOSED WELL HEAD.

▲ = SECTION CORNERS LOCATED.

PDOP = 1.7

NAD 83 (SURFACE LOCATION)

LATITUDE = 40°51'15.74" (40.854372)

LONGITUDE = 103°50'41.08" (103.844744)

NAD 27 (SURFACE LOCATION)

LATITUDE = 40°51'15.80" (40.854389)

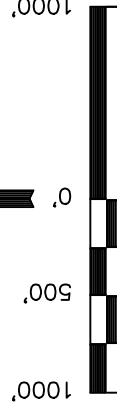
LONGITUDE = 103°50'39.27" (103.844242)

BASIS OF ELEVATION

SPOT ELEVATION LOCATED AT THE NORTHEAST CORNER OF SECTION 15, T9N, R58W, 6th P.M. TAKEN FROM THE GATEHOOK SPRING, QUADRANGLE, COLORADO, WELD COUNTY, 7.5 MINUTE QUAD (TOPOGRAPHIC MAP) PUBLISHED BY THE UNITED STATES DEPARTMENT OF THE INTERIOR, GEOLOGICAL SURVEY. SAID ELEVATION IS MARKED AS BEING 4679 FEET.

BASIS OF BEARINGS

BASIS OF BEARINGS IS A G.P.S. OBSERVATION.



CERTIFICATE

THIS IS TO CERTIFY THAT THE ABOVE PLAT WAS PREPARED FROM FIELD NOTES OF ACTUAL SURVEYS MADE BY ME OR UNDER MY SUPERVISION AND THAT THE SAME ARE TRUE AND CORRECT TO THE BEST OF MY KNOWLEDGE AND BELIEF.

REGISTERED LAND SURVEYOR
REGISTRATION NO. 17492
STATE OF COLORADO
08-09-13

REVISED: 08-07-13 H.K.W.

REVISED: 07-02-13

UNTAAH ENGINEERING & LAND SURVEYING

85 SOUTH 200 EAST - VERNAL, UTAH 84078

(435) 789-1017

SCALE
1" = 1000'

DATE SURVEYED:
05-08-13

DATE DRAWN:
05-10-13

PARTY

D.N. G.W. J.S.

REFERENCES

G.L.O. PLAT

WEATHER

WARM

FILE

WHITING OIL & GAS CORP.

T10N, R58W, 6th P.M.

WHITING OIL & GAS CORP.

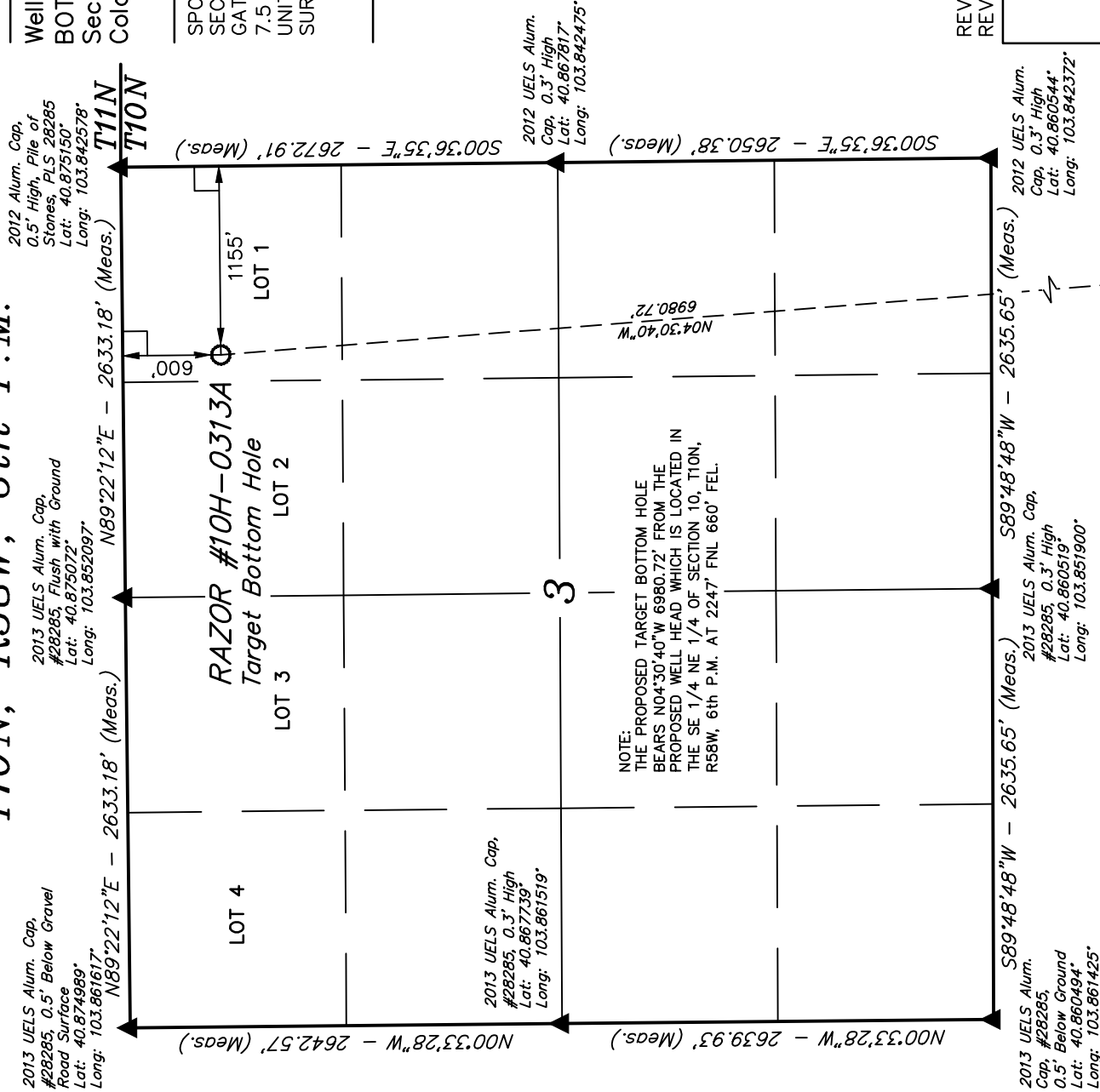
Well location, RAZOR #10H-0313A (TARGET BOTTOM HOLE), located as shown in Lot 1 of Section 3, T10N, R58W, 6th P.M., Weld County, Colorado.

BASIS OF ELEVATION

SPOT ELEVATION LOCATED AT THE NORTHEAST CORNER OF SECTION 15, T9N, R58W, 6th P.M. TAKEN FROM THE GATEHOOK SPRING, QUADRANGLE, COLORADO, WELD COUNTY, 7.5 MINUTE QUAD (TOPOGRAPHIC MAP) PUBLISHED BY THE UNITED STATES DEPARTMENT OF THE INTERIOR, GEOLOGICAL SURVEY. SAID ELEVATION IS MARKED AS BEING 4679 FEET.

BASIS OF BEARINGS

BASIS OF BEARINGS IS A G.P.S. OBSERVATION.



LEGEND:

- 90° SYMBOL
- PROPOSED WELL HEAD.
- SECTION CORNERS LOCATED.

Surface Location

NAD 83 (TARGET BOTTOM HOLE)	
LATITUDE =	40°52'24.49" (40.873469)
LONGITUDE =	103°50'48.23" (103.846731)
NAD 27 (TARGET BOTTOM HOLE)	
LATITUDE =	40°52'24.54" (40.873483)
LONGITUDE =	103°50'46.42" (103.846228)

CERTIFICATE

THIS IS TO CERTIFY THAT THE ABOVE PLAT WAS PREPARED FROM FIELD NOTES OF ACTUAL SURVEYS MADE BY ME OR UNDER MY SUPERVISION AND THAT THE SAME ARE TRUE AND CORRECT TO THE BEST OF MY KNOWLEDGE AND BELIEF.

REGISTERED LAND SURVEYOR
REGISTRATION NO. 17492
STATE OF COLORADO
08-09-13

REVISED 08-07-13 H.K.W.
REVISED: 07-02-13

UNTAAH ENGINEERING & LAND SURVEYING
85 SOUTH 200 EAST - VERNAL, UTAH 84078
(435) 789-1017

SCALE 1" = 1000'	DATE SURVEYED: 05-08-13	DATE DRAWN: 05-10-13
PARTY D.N. G.W. J.S.	REFERENCES G.L.O. PLAT	
WEATHER WARM	FILE	
		WHITING OIL & GAS CORP.