

LOG created using Lplot VH Version 3.0, November 08, 2013, Copyright (C) 1999-2009 Pason Systems Corp.

**OPERATOR:** NOBLE ENERGY INC.  
**WELL:** SCHAFFER K16-64-1HN  
**LOCATION:** NESE SEC16 T4N R66W  
**COUNTY:** WELD  
**STATE:** COLORADO  
**SPOT:** 2284' FSL, 340' FEL  
**ELEVATION:** 4744' GL, 4760' KB  
**FIELD:** WATTENBERG  
**SPUD DATE:** 10/30/13  
**TD DATE:** 11/7/13  
**DATES LOGGED:** 11/1/13 - 11/7/13  
**DEPTHS LOGGED:** 595' - 11642'  
**GEOLOGISTS:** GARY MYERS, MOHAMMED ALMUBARAK  
**DRILLING FLUID:** LSND  
**DRILLING RIG:** PRECISION 828  
**API:** 05-123-37807  
**LOG TYPE:** VERTICAL  
**SCALE:** 1:240 (5 inches per 100 feet)  
**REMARKS:** WELLSITE GEOLOGICAL SERVICES PROVIDED BY COLUMBINE LOGGING INC.

LOG CONTINUES ON FILE: Schafer K16-64-1HN Horiz.lplot

### LITHOLOGIES



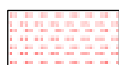
Sandstone



Shaly Sandstone



Shaly Siltstone



Siltstone



Silty Shale

### ENGINEERING SYMBOLS



Connection



Connection Gas



Arrow



Midnight Depth



Arrow



Trip Gas

ROP	
0	1000
FT/HR	
BIT #2	
SMITH	
SDi611, 8.75"	
SER# JH4654	
IN @ MD 595'	

ROTA TE/SLIDE

GAMMA	
0	AP200

INTERPRETIVE  
LITHOLOGY

PICTURE

DEPTH  
(FEET)

570  
80  
90

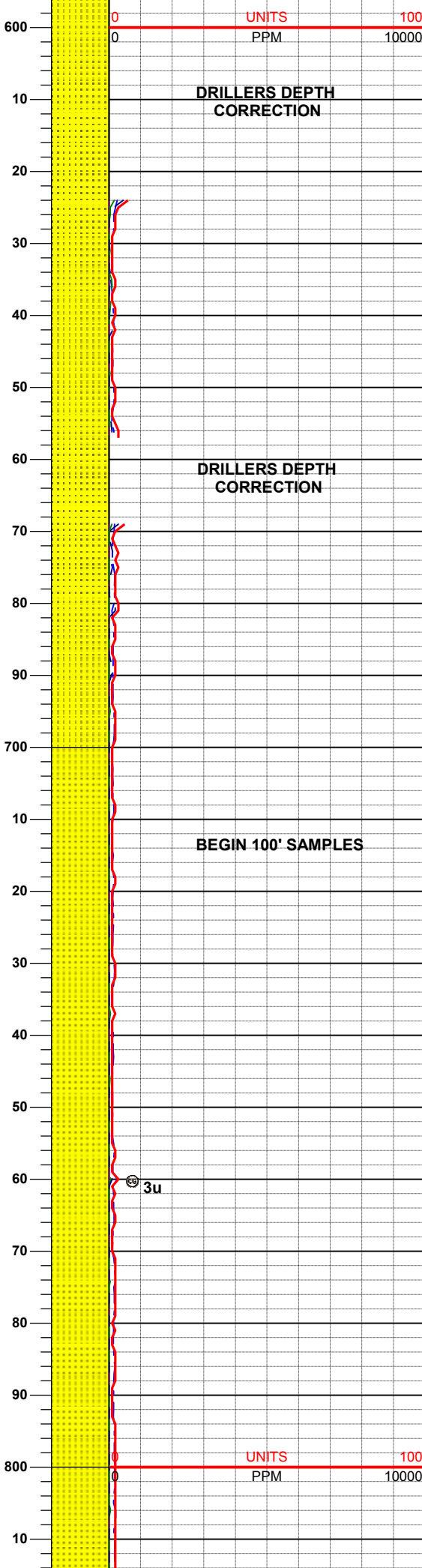
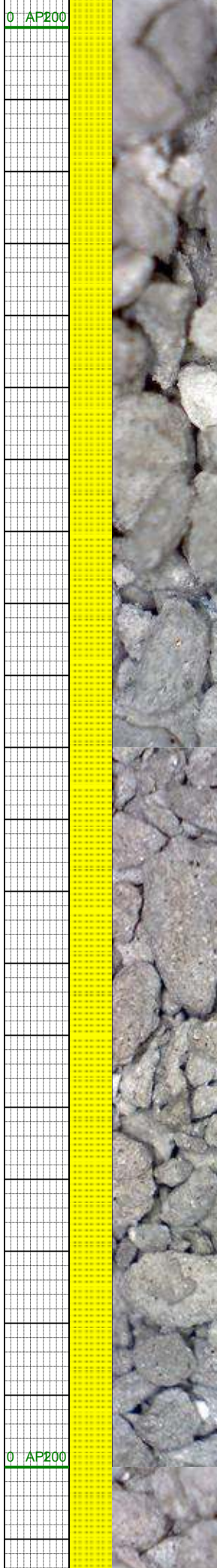
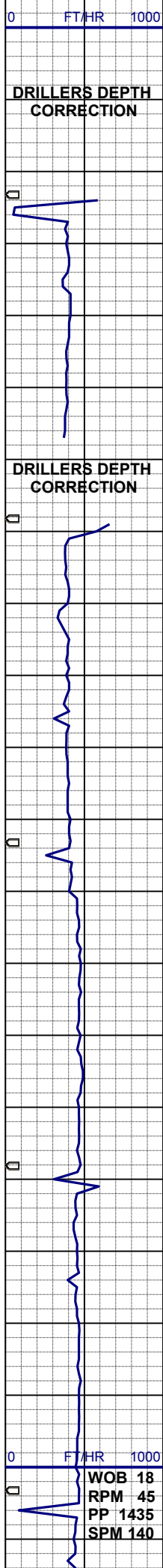
CUTTINGS  
LITHOLOGY

GAS		
0	UNITS	100
0	C1	
0	PPM	10000
0	C2	
0	PPM	10000
0	C3	
0	PPM	10000
0	C4	
0	PPM	10000

LITHOLOGY DESCRIPTION

COLUMBINE LOGGING, INC.  
ON LOCATION 10/31/13  
MANNED 2-PERSON LOGGING  
USING PASON GAS SYSTEM

DRILLED OUT OF SHOE  
0410 HRS, 11/1/13



MD 613'  
INC 0.3°  
AZI 243.8°  
TVD 613.0'

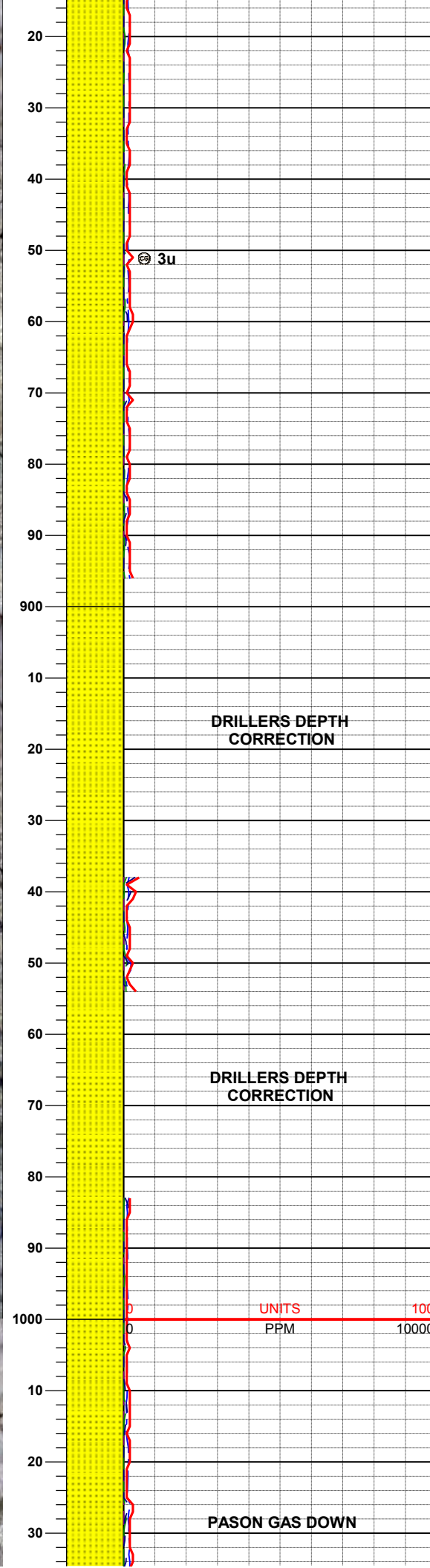
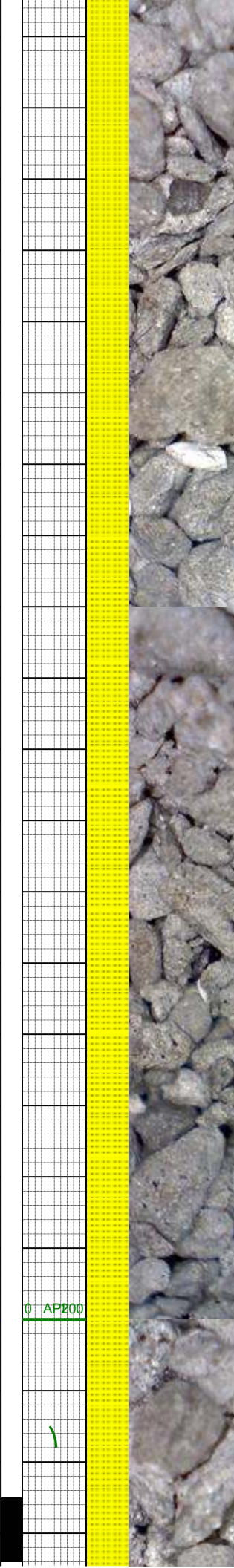
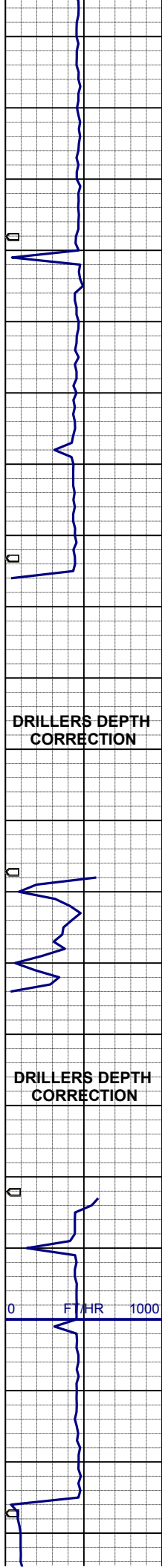
SS: lt- mgy, s&p, clr- trnsI, f- mgr, blkY  
- sbblky, sbrndd-sbang, mod srt, mod  
sft, p- mod cmt, arg- sil mtx, sl calc, sl  
mica

MD 703'  
INC 0.4°  
AZI 254.5°  
TVD 703.0'

SS: lt- mgy, s&p, clr- trnsI, f- mgr, blkY  
- sbblky, sbrndd-sbang, mod srt, mod  
sft, p- mod cmt, arg- sil mtx, sl calc, sl  
mica

WT 8.5 / VIS 29

MD 793'  
INC 0.5°  
AZI 258.9°  
TVD 793.0'



SS: lt- mgy, s&p, clr- trnsl, f- mgr, blk  
- sbblky, sbrndd-sbang, mod srt, mod  
sft, p- mod cmt, arg- sil mtx, sl calc, sl  
mica

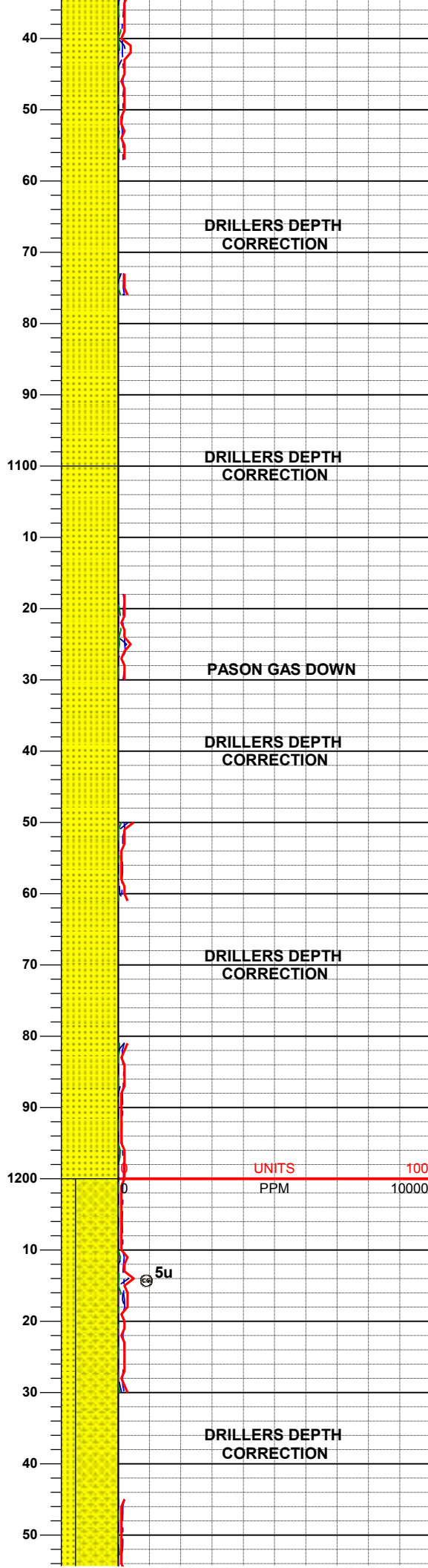
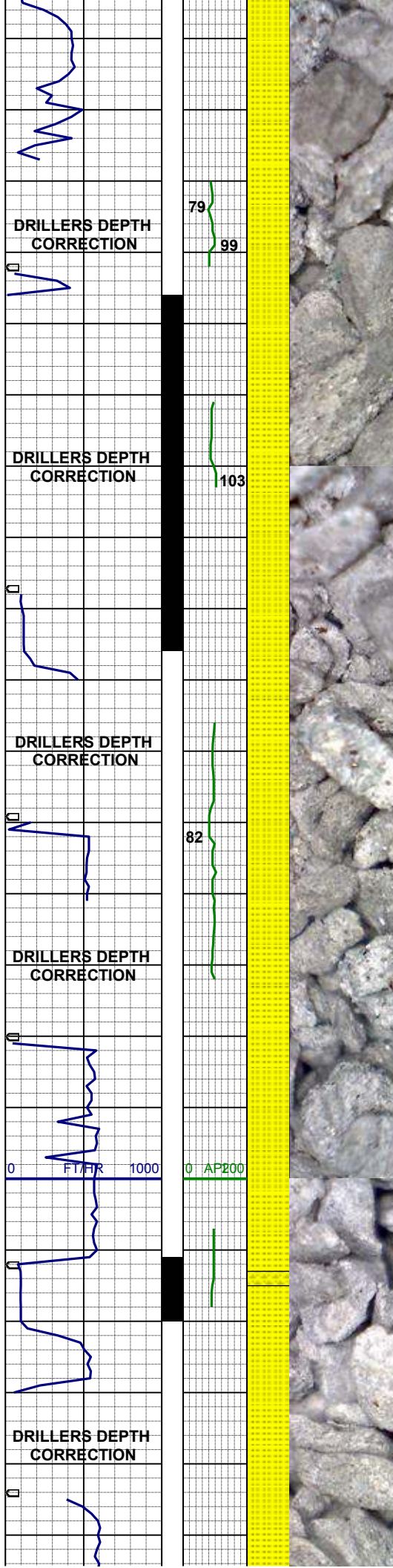
MD 882  
INC 0.4°  
AZI 256.3°  
TVD 882.0'

SS: lt- mgy, s&p, clr- trnsl, f- mgr, blk  
- sbblky, sbrndd-sbang, mod srt, mod  
sft, p- mod cmt, arg- sil mtx, sl calc, sl  
mica

MD 972'  
INC 9.4°  
AZI 261.0°  
TVD 972.0'

UNITS 100  
PPM 10000





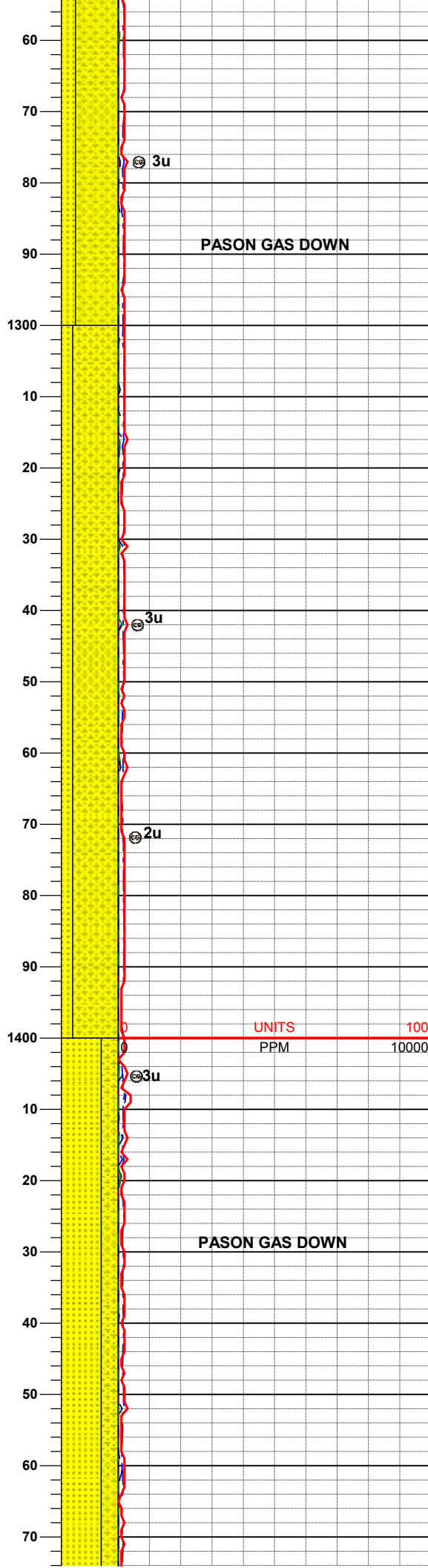
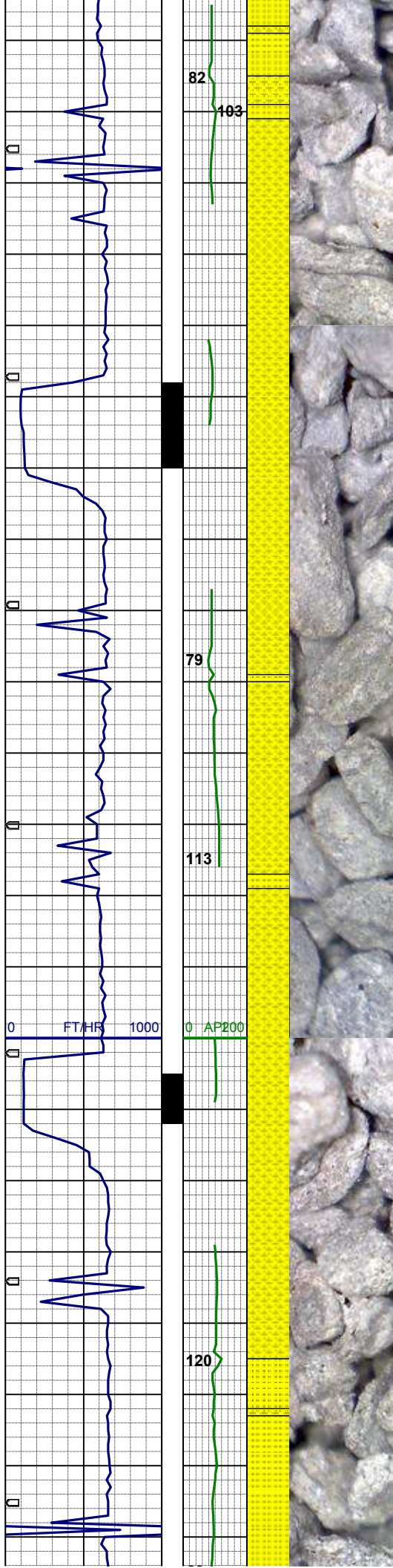
SS: lt- mgy, s&p, clr- trnsl, f- mgr, blk  
- sbblky, sbrndd-sbang, mod srt, mod  
sft, p- mod cmt, arg- sil mtz, sl calc, sl  
mica

MD 1062'  
INC 1.0°  
AZI 161.7°  
TVD 1062.0'

SS: lt- mgy, s&p, clr- trnsl, f- mgr, blk  
- sbblky, sbrndd-sbang, mod srt, mod  
sft, p- mod cmt, arg- sil mtz, sl calc, sl  
mica

MD 1152'  
INC 2.6°  
AZI 174.6°  
TVD 1156.9'

SHYSS: mgy, trnsl- op, vfgr, sbblky,  
mod srt, sft- sl firm, mod cem, pred  
arg mtz, sl calc, slty, grdg- shysltst



SS: wh- mgy, s&p ip, clr- trnsi, f- mgr, blky- sbblky, sbrnnd- sbang, p- mod srt, mod sft, mod cmt, arg- sil mtx, sl calc, sl mica

MD 1347'  
INC 4.7°  
AZI 148.9°  
TVD 1346.6'

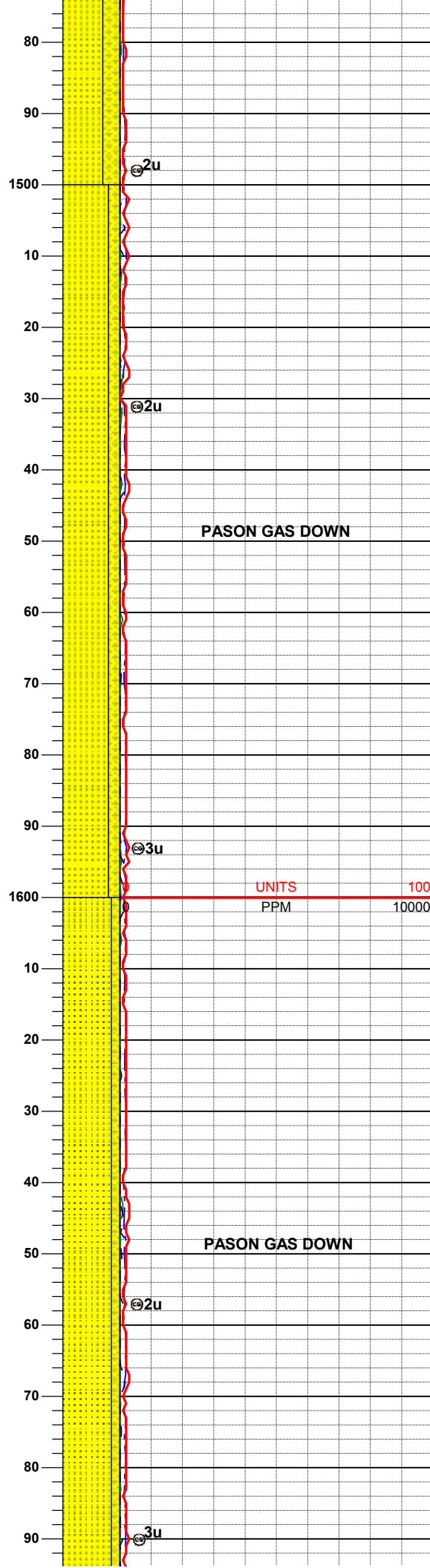
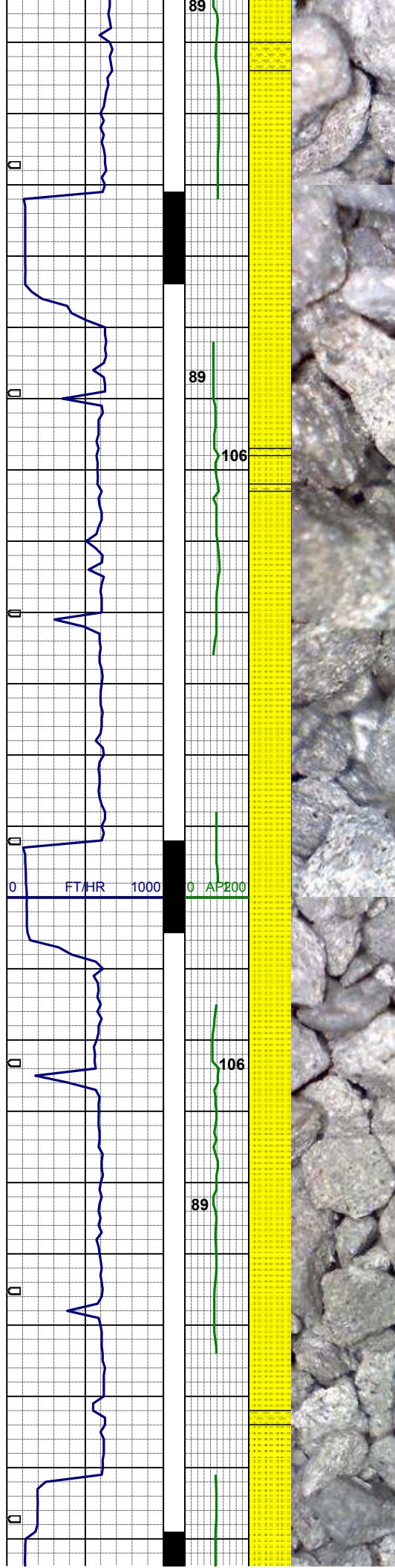
SHYSS: mgy, trnsi- op, vfgr, sbblky, mod srt, sft- sl firm, mod cem, pred arg mtx, sl calc, slty, grdg- shysltst  
SS: wh- mgy, s&p ip, clr- trnsi, f- mgr, blky- sbblky, sbrnnd- sbang, p- mod srt, mod sft, mod cmt, arg- sil mtx, sl calc, sl mica

UNITS 100  
PPM 10000

MD 1442'  
INC 5.5°  
AZI 142.7°  
TVD 1441.2'

SS: wh- mgy, s&p ip, clr- trnsi, f- mgr, blky- sbblky, sbrnnd- sbang, p- mod srt, mod sft, mod cmt, arg- sil mtx, sl calc, sl mica  
SHYSS: mgy, trnsi- op, vfgr, sbblky, mod srt, sft- sl firm, mod cem, pred arg mtx, sl calc, slty, grdg- shysltst





MD 1537'  
INC 6.2°  
AZI 137.5°  
TVD 1535.7'

SS: wh- mgy, s&p ip, clr- trnsi, f- mgr,  
blky- sbblky, sbmdd- sbang, p- mod  
srt, mod sft, mod cmt, arg- sil mtx, sl  
calc, sl mica  
SHYSS: mgy, trnsi- op, vfgr, sbblky,  
mod srt, sft- sl firm, mod cem, pred  
arg mtx, sl calc, slty, grdg- shysltst

PASON GAS DOWN

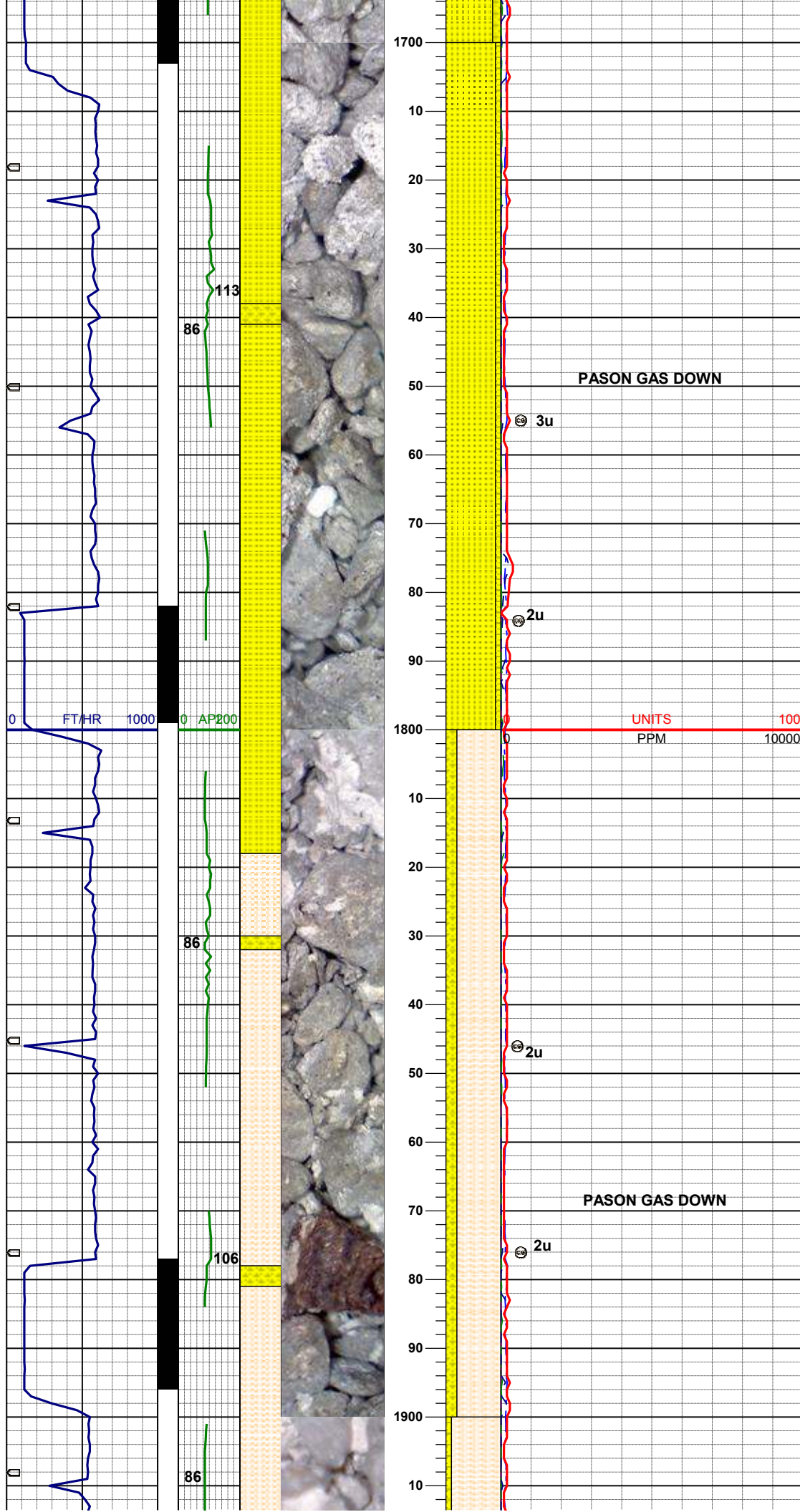
UNITS 100  
PPM 10000

MD 1632'  
INC 7.5°  
AZI 143.6°  
TVD 1630.0'

SS: wh- mgy, s&p ip, clr- trnsi, f- mgr,  
blky- sbblky, sbmdd- sbang, p- mod  
srt, mod sft, mod cmt, arg- sil mtx, sl  
calc, sl mica, tr pyr, tr glau  
SHYSS: mgy, trnsi- op, vfgr, sbblky,  
mod srt, sft- sl firm, mod cem, pred  
arg mtx, sl calc, slty, grdg- shysltst

PASON GAS DOWN

3u



MD 1727'  
INC 7.7°  
AZI 142.0°  
TVD 1724.2'

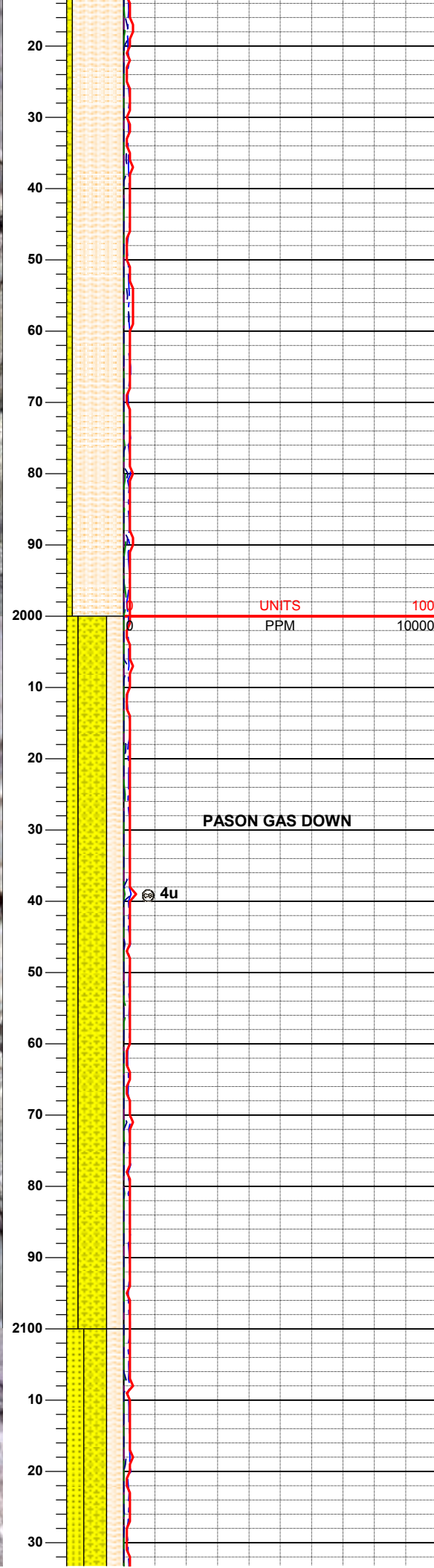
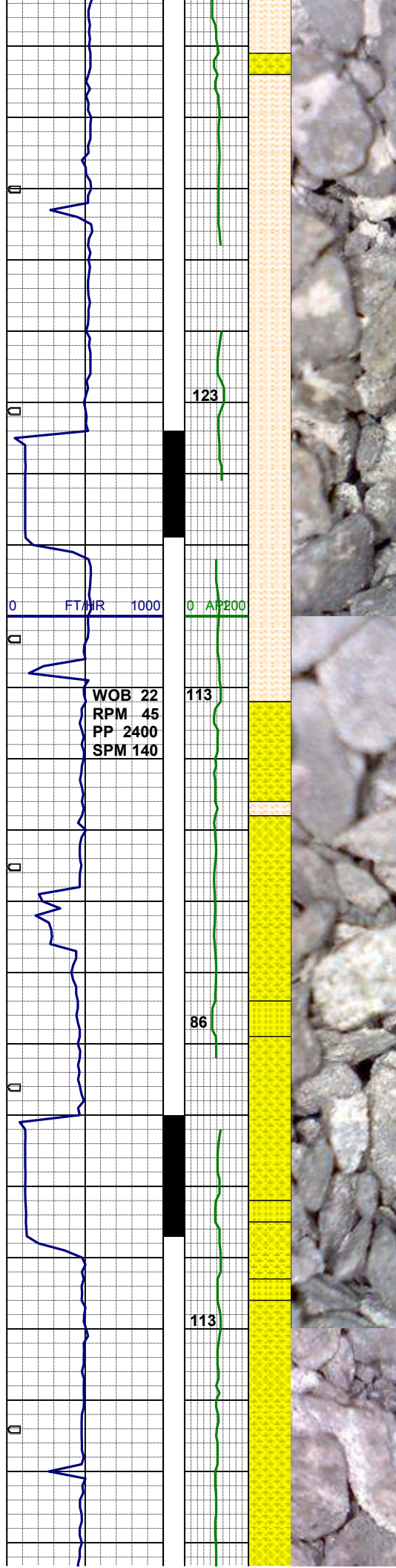
SS: wh- mgy, s&p ip, clr- trnsi, f- mgr,  
blky- sbblky, sbmdd- sbang, p- mod  
srt, mod sft, mod cmt, arg- sil mtx, sl  
calc, sl mica, tr pyr, tr glau  
SHYSS: mgy, trnsi- op, vfgr, sbblky,  
mod srt, sft- sl firm, mod cem, pred  
arg mtx, sl calc, slty, grdg- shysltst

MD 1821'  
INC 8.4°  
AZI 137.8°  
TVD 1817.2'

SHYSLTST: m- dkgy, sbblky- sbplty,  
sft- sl firm, arg, sl calc, sdy ip, abnt wh  
cly, grdg- shyss

MD 1916'





INC 9.5°  
AZI 134.0°  
TVD 1911.1'

SHYSLTST: m- dkgy, sbblky- sbplty,  
sft- sl firm, arg, sl calc, sdy ip, abnt wh  
cly, grdg- shyss

MD 2014'  
INC 9.5°  
AZI 137.3°  
TVD 2007.7'

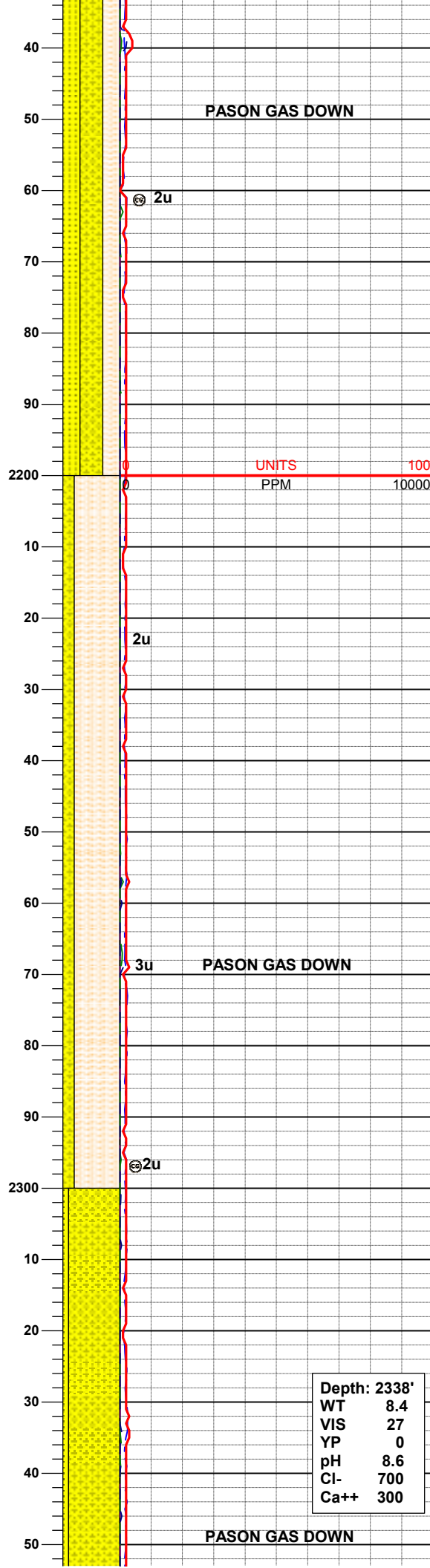
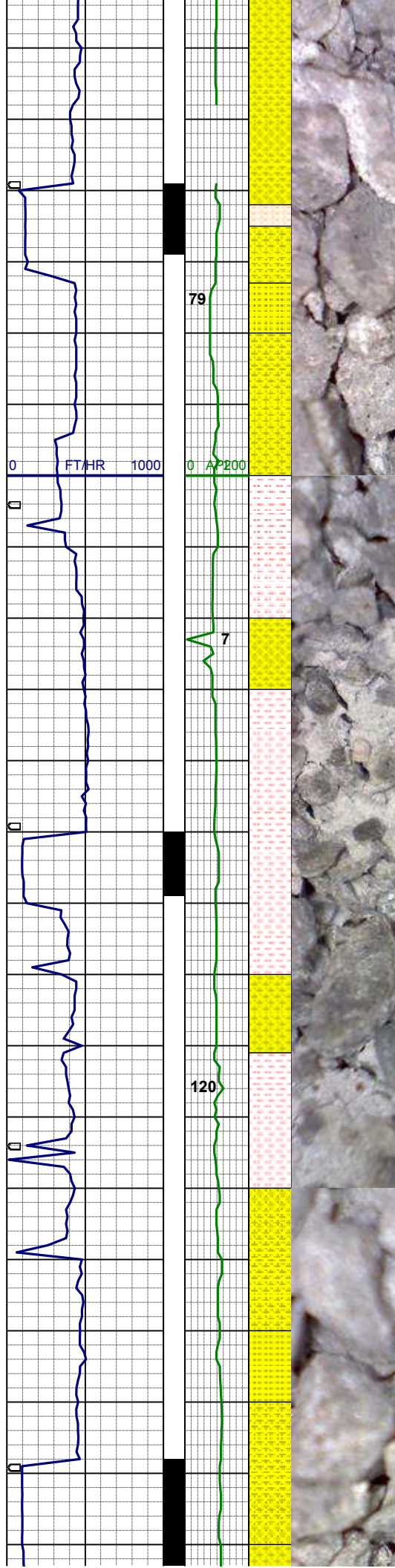
PASON GAS DOWN

4u

SHYSS: mgy, trnsi- op, vfgr, sbblky,  
mod srt, sft- sl firm, p- mod cem, pred  
arg mtx, sl calc, slty, abnt wh cly, grdg  
- shysltst  
SS: wh- mgy, s&p ip, clr- trnsi, f- mgr,  
blky- sbblky, sbmdd- sbang, p- mod  
srt, mod sft, mod cmt, arg- sil mtx, sl  
calc, sl mica

MD 2104'  
INC 10.5°  
AZI 142.6°  
TVD 2096.4'





SHYSS: mgy, trnsi- op, vfgr, sbblky, mod srt, sft- sl firm, p- mod cem, pred arg mtx, sl calc, slty, abnt wh cly, grdg - shysltst  
SS: wh- mgy, s&p ip, clr- trnsi, f- mgr, blk- sbblky, sbrndd- sbang, p- mod srt, mod sft, mod cmt, arg- sil mtx, sl calc, sl mica

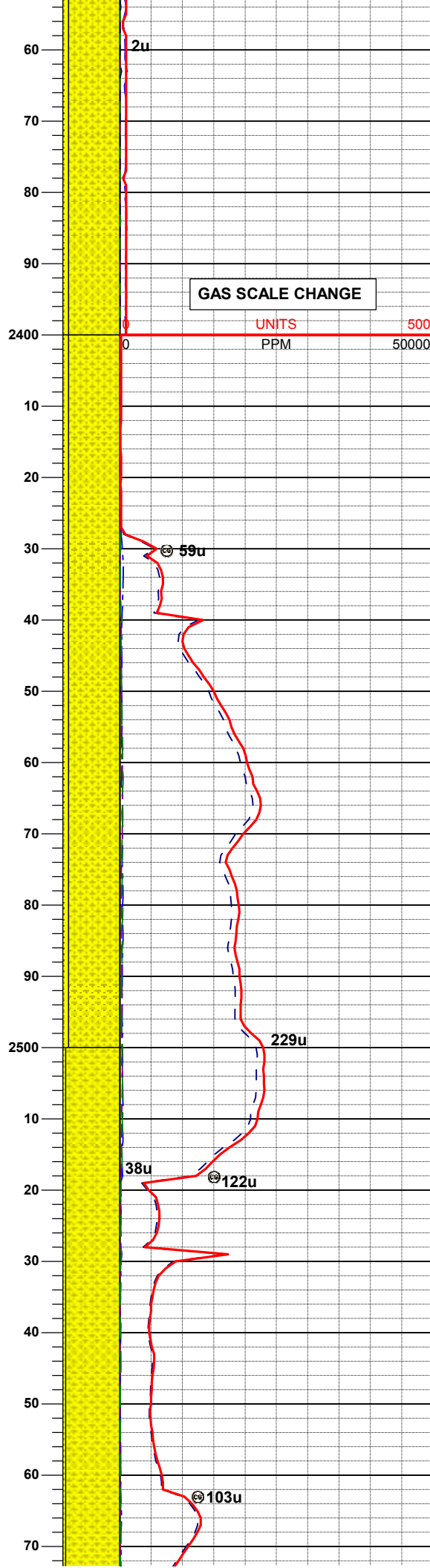
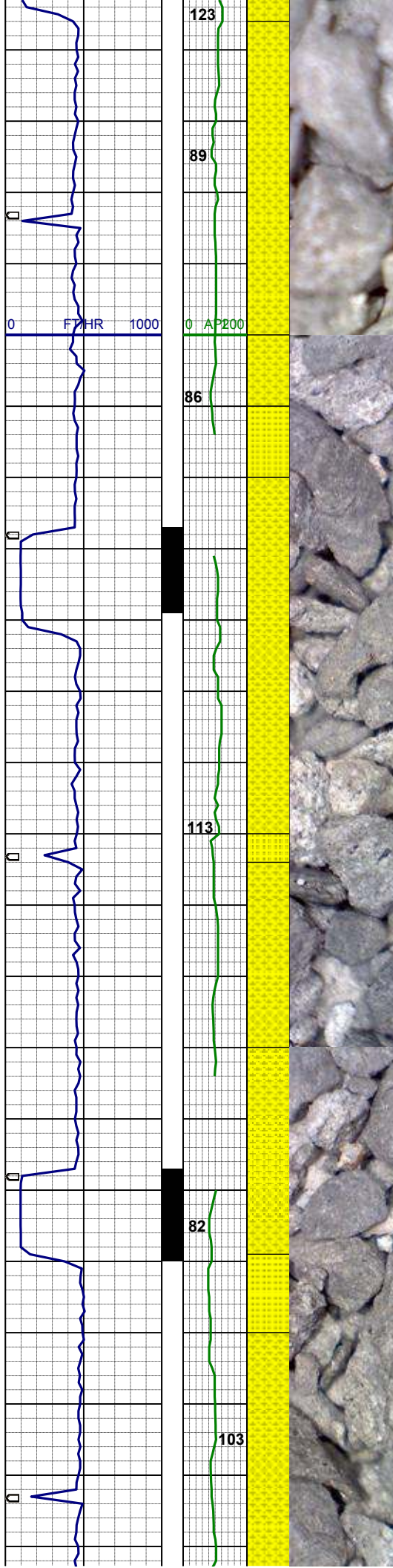
MD 2194'  
INC 10.8°  
AZI 140.3°  
TVD 2184.8'

SHYSLTST: m- dkgy, sbblky- sbplty, sft- sl firm, arg, sl calc, sdy ip, abnt wh cly, grdg- shyss

MD 2284'  
INC 10.3°  
AZI 137.7°  
TVD 2273.3'

Depth: 2338'  
WT 8.4  
VIS 27  
YP 0  
pH 8.6  
Cl- 700  
Ca++ 300

SHYSS: m= dkgy, trnsi- op, vfgr, sbblky, mod srt, sft- sl firm, p- mod cem, pred arg mtx, sl calc, slty, grdg- shysltst



SS: wh- mgy, s&p ip, clr- trnsl, f- mgr, blk- sbblky, sbrnld- sbang, p- mod srt, mod sft, mod cmt, arg- sil mtz, sl calc, sl mica

MD 2373'  
INC 10.4°  
AZI 141.0°  
TVD 2360.9'

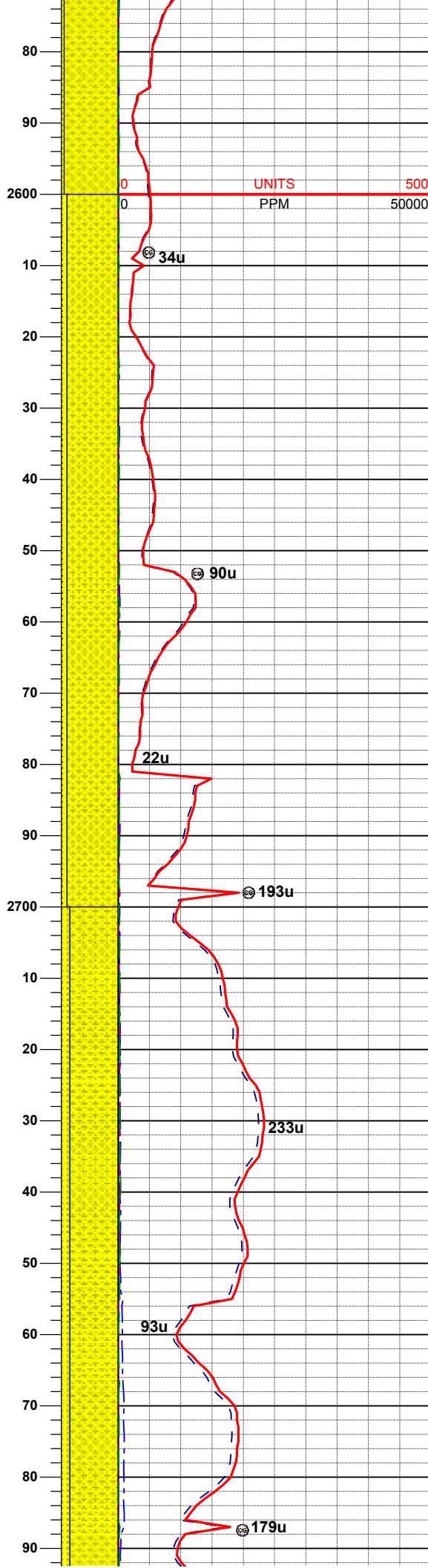
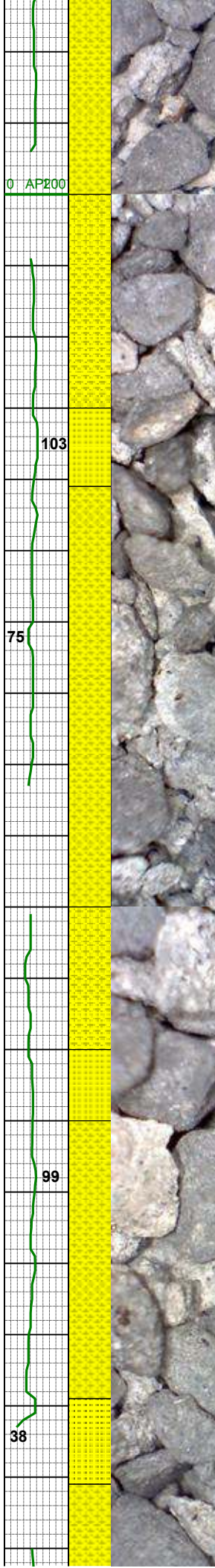
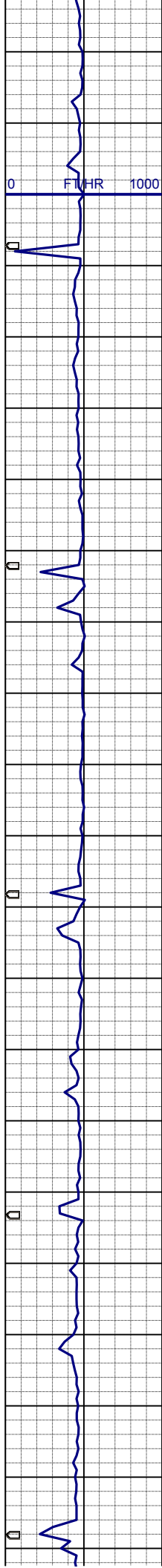
SHYSS: m= dkgy, trnsl- op, vfgr, sbblky, mod srt, sft- sl firm, p- mod cem, pred arg mtz, sl calc, slty, grdg- shysltst  
SS: wh- mgy, s&p ip, clr- trnsl, f- mgr, blk- sbblky, sbrnld- sbang, p- mod srt, mod sft, mod cmt, arg- sil mtz, sl calc, sl mica

MD 2463'  
INC 11.3°  
AZI 143.8°  
TVD 2449.2'

SHYSS: mgy, occ gybrn, trnsl- op, vfgr, sbblky- sbplty, mod srt, sft- sl firm, sod cmt, pred arg mtz, sl calc, slty, grdg- shysltst  
SS: wh- mgy, s&p, clr- trnsl, f- mgr, blk- sbblky, sbrnld- sbang, p srt, mod sft, mod cmt, arg- sil mtz, sl calc, sl mica, occ glau

MD 2553'  
INC 11.6°  
AZI 148.9°  
TVD 2537.5'



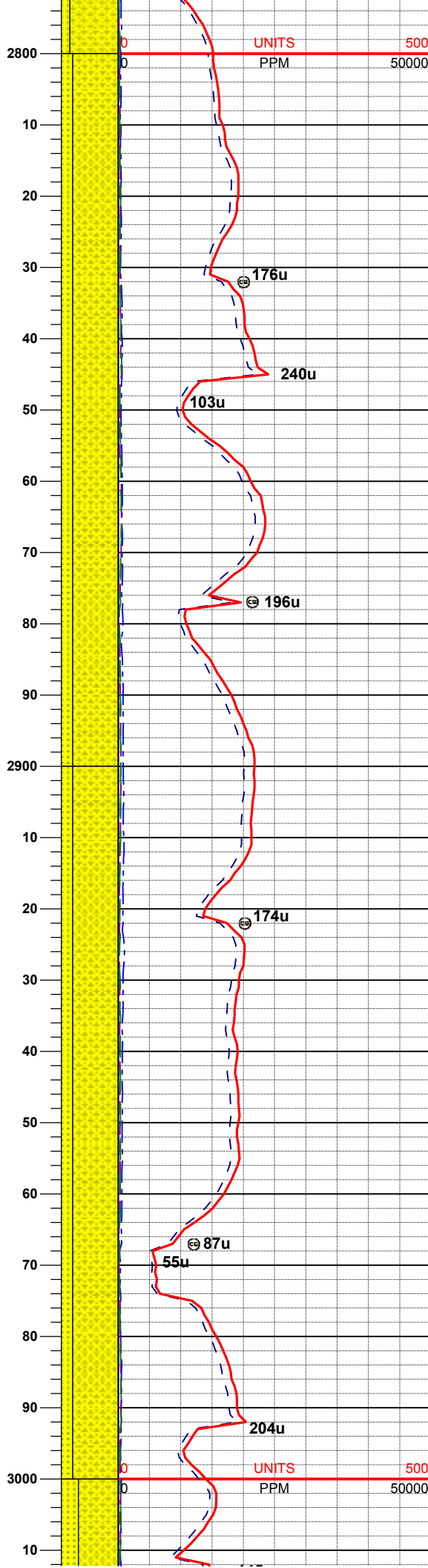
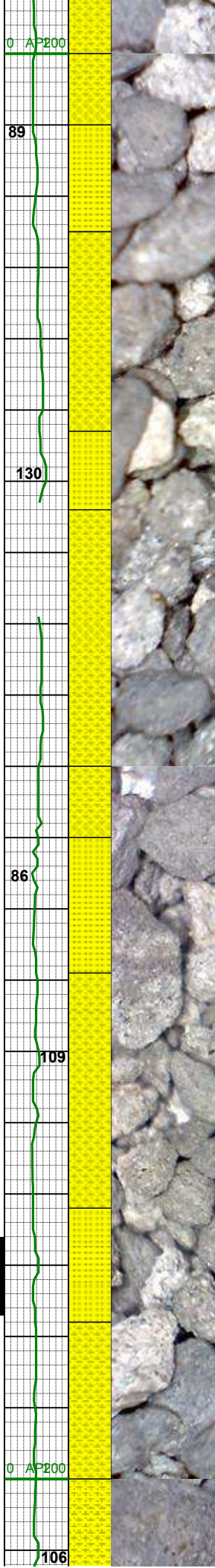
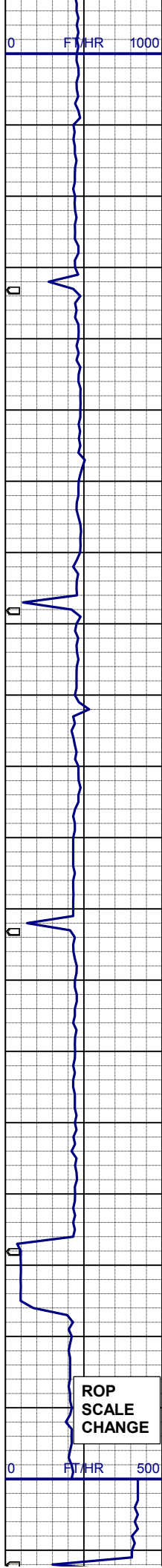


MD 2643'  
INC 11.7°  
AZI 147.7°  
TVD 2625.6'

SHYSS: mgy, occ gybrn, trnsi- op,  
vfgr, sbblky- sbplty, mod srt, sft- sl  
firm, sod cmt, pred arg mtx, sl calc,  
sly, grdg- shysltst  
SS: wh- mgy, s&p, clr- trnsi, f- mgr,  
blky- sbblky, sbrmdd-sbang, p srt, mod  
sft, mod cmt, arg- sil mtx, sl calc, sl  
mica, occ glau

MD 2733'  
INC 12.2°  
AZI 148.7°  
TVD 2713.7'

SHYSS: mgy, occ gybrn, trnsi- op,  
vfgr, sbblky- sbplty, mod srt, sft- sl  
firm, sod cmt, pred arg mtx, sl calc,  
sly, grdg- shysltst  
SS: wh- mgy, s&p, clr- trnsi, f- mgr,  
blky- sbblky, sbrmdd-sbang, p srt, mod  
sft, mod cmt, arg- sil mtx, sl calc, sl  
mica, occ glau



MD 2823'  
INC 12.2°  
AZI 146.8°  
TVD 2801.6'

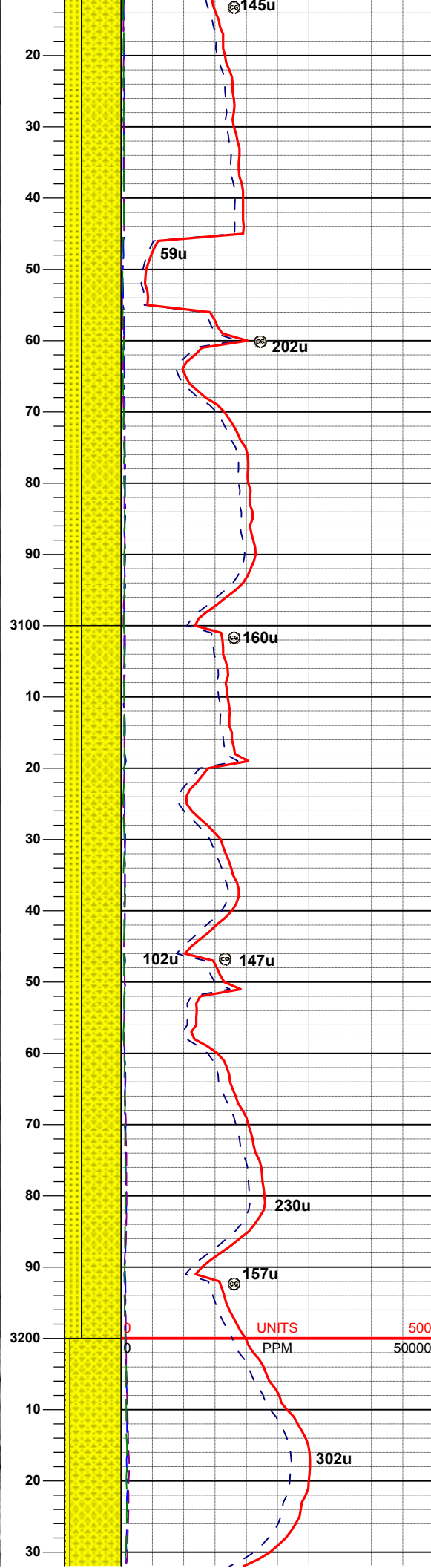
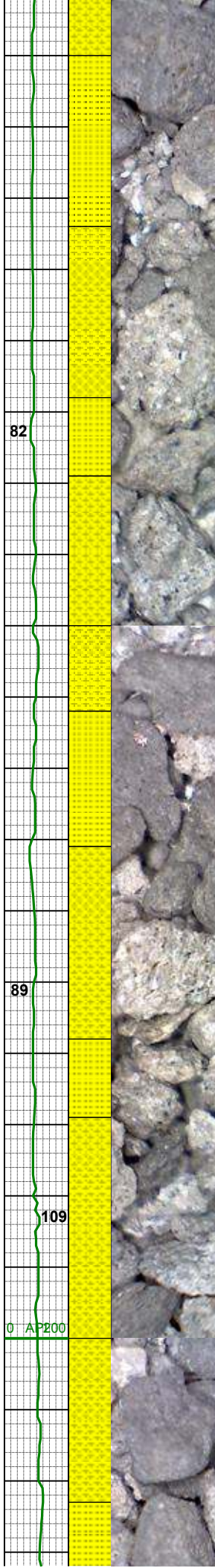
SHYSS: mgy, occ gybrn, trnsi- op,  
vfgr, sbblky- sbplty, mod srt, sft- sl  
firm, sod cmt, pred arg mtz, sl calc,  
sity, grdg- shysltst  
SS: wh- mgy, s&p, clr- trnsi, f- mgr,  
blky- sbblky, sbmdd-sbang, p srt, mod  
sft, mod cmt, arg- sil mtz, sl calc, sl  
mica, occ glau

MD 2913'  
INC 10.8°  
AZI 143.5°  
TVD 2889.8'

SHYSS: mgy, occ gybrn, trnsi- op,  
vfgr, sbblky- sbplty, mod srt, sft- sl  
firm, sod cmt, pred arg mtz, sl calc,  
sity, grdg- shysltst  
SS: wh- mgy, s&p, clr- trnsi, f- mgr,  
blky- sbblky, sbmdd-sbang, p srt, mod  
sft, mod cmt, arg- sil mtz, sl calc, sl  
mica, occ glau

MD 3002'  
INC 12.1°  
AZI 145.6°  
TVD 2977.0'



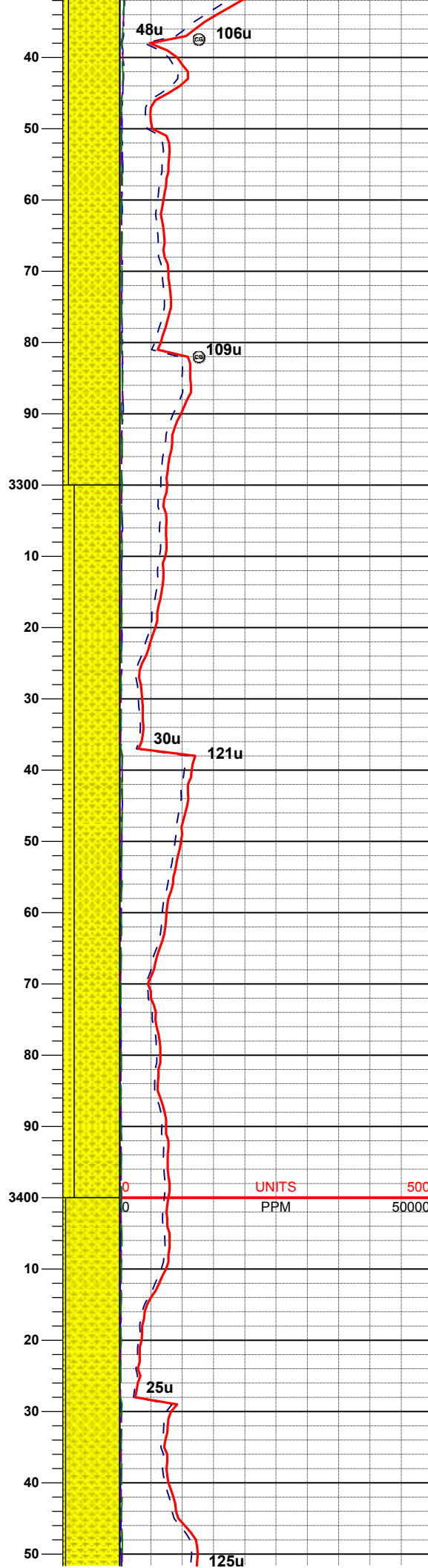
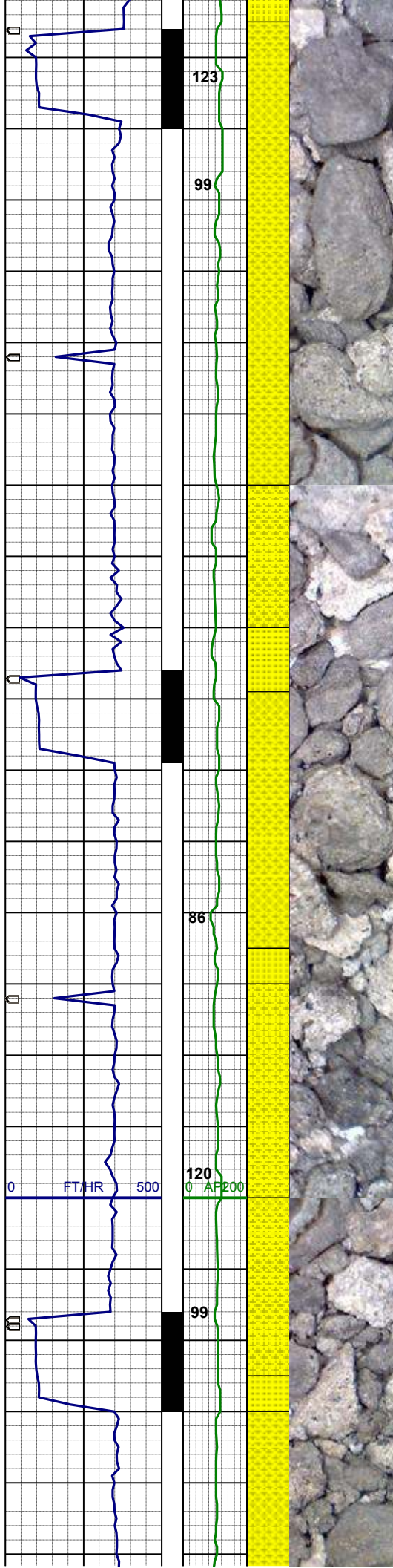


SHYSS: mgy, occ gybrn, trnsl- op,  
vfr, sbblky- sbply, mod srt, sft- sl  
firm, sod cmt, pred arg mtx, sl calc,  
slyt, grdg- shysltst  
SS: wh- mgy, s&p, clr- trnsl, f- mgr,  
bky- sbblky, sbrnrd-sbang, p srt, mod  
sft, mod cmt, arg- sil mtx, sl calc, sl  
mica, occ glau

MD	3092'
INC	11.5°
AZI	144.7°
TVD	3065.1'

SHYSS: mgy, occ gybrn, trnsl- op,  
vfrg, sbblky- sbplyt, mod srt, sft- sl  
firm, sod cmt, pred arg mtz, sl calc,  
slyt, grdg- shysltst  
SS: wh- mgy, s&p, clr- trnsl, f- mgr,  
bky- sbblky, sbmdd-sbang, p srt, mod  
sft, mod cmt, arg- sil mtz, sl calc, sl  
mica, occ glau

MD	3182'
INC	10.4°
AZI	142.6°
TVD	3153.5'



SHYSS: mgy, occ gybrn, trnsi- op,  
vfgr, sbblky- sbply, mod srt, sft- sl  
firm, sod cmt, pred arg mtx, sl calc,  
sity, grdg- shysltst  
SS: wh- mgy, s&p, clr- trnsi, f- mgr,  
blky- sbblky, sbrnnd-sbang, p srt, mod  
sft, mod cmt, arg- sil mtx, sl calc, sl  
mica, occ glau

MD 3272'  
INC 10.2°  
AZI 143.5°  
TVD 3242.0'

SHYSS: mgy, occ gybrn, trnsi- op,  
vfgr, sbblky- sbply, mod srt, sft- sl  
firm, sod cmt, pred arg mtx, sl calc,  
sity, grdg- shysltst  
SS: wh- mgy, s&p, clr- trnsi, f- mgr,  
blky- sbblky, sbrnnd-sbang, p srt, mod  
sft, mod cmt, arg- sil mtx, sl calc, sl  
mica, occ glau

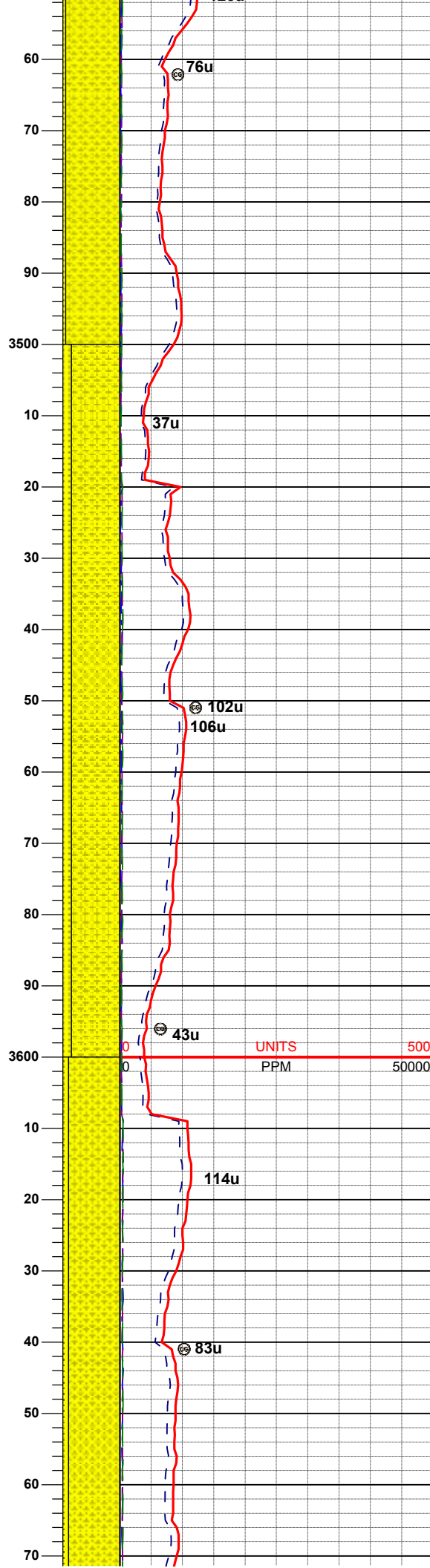
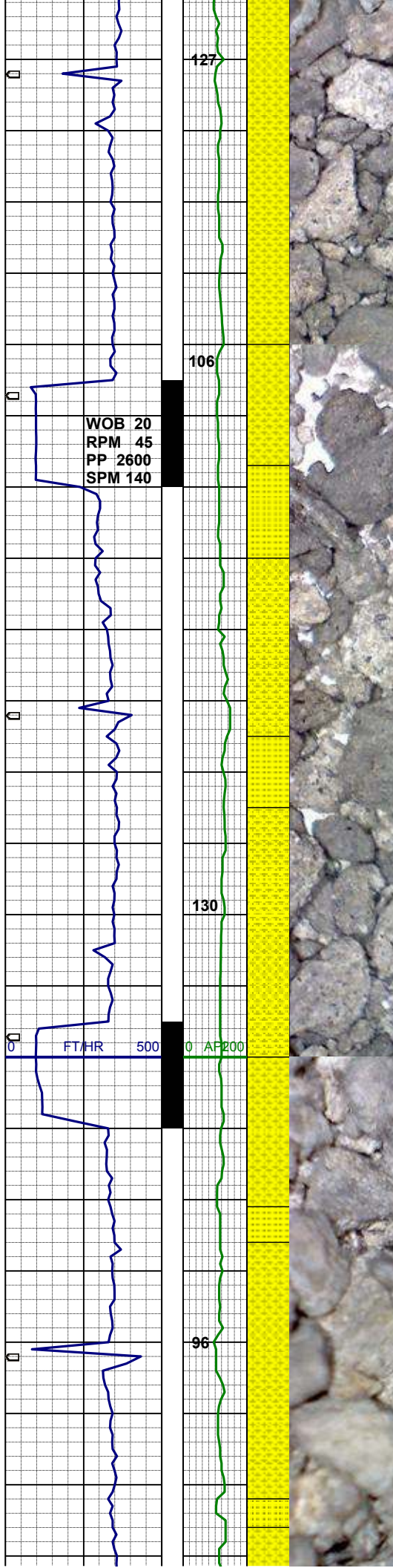
MD 3362'  
INC 10.5°  
AZI 144.3°  
TVD 3330.6'

WT 8.95 / VIS 30

SHYSS: mgy, occ gybrn, trnsi- op,  
vfgr, sbblky- sbply, mod srt, sft- sl  
firm, sod cmt, pred arg mtx, sl calc,  
sity, grdg- shysltst  
SS: wh- mgy, s&p, clr- trnsi, f- mgr,  
blky- sbblky, sbrnnd-sbang, p srt, mod  
sft, mod cmt, arg- sil mtx, sl calc, sl  
mica, occ glau

MD 3452'  
INC 11.0°





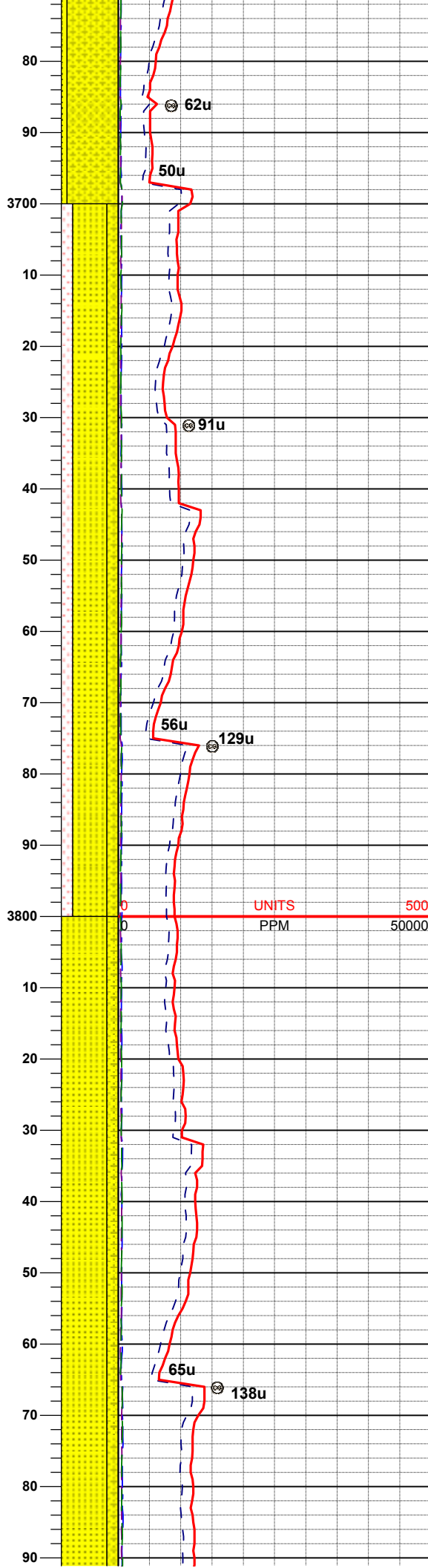
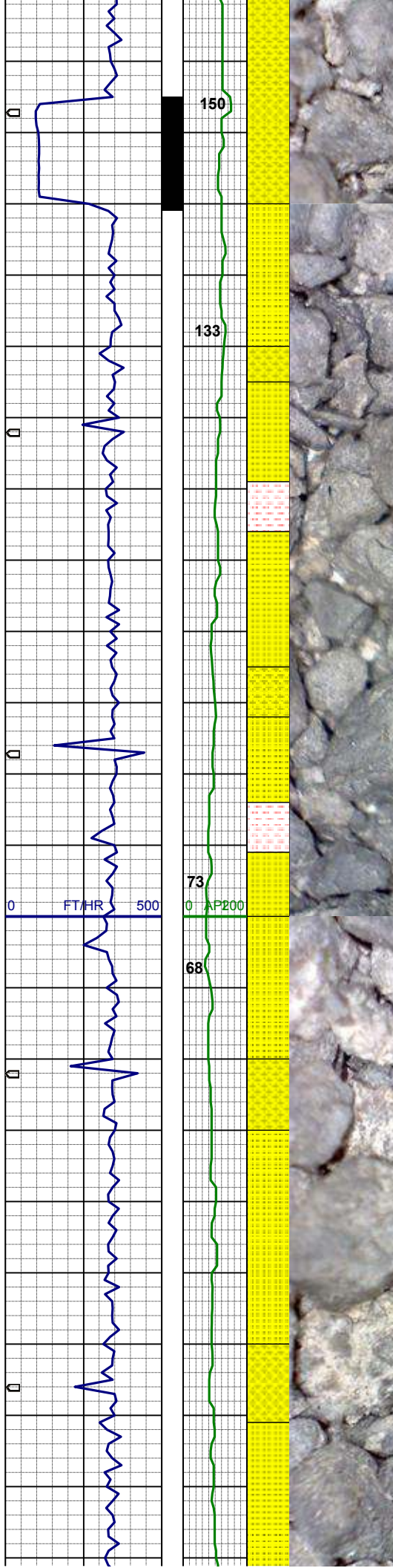
AZI 143.8°  
TVD 3419.0'

MD 3542'  
INC 11.0°  
AZI 144.5°  
TVD 3507.3'

SHYSS: mgy, occ gybm, trnsi- op,  
vfgr, sbblky- sbplty, mod srt, sft- sl  
firm, sod cmt, pred arg mtx, sl calc,  
slty, grdg- shysltst  
SS: wh- mgy, s&p, clr- trnsi, f- mgr,  
blky- sbblky, sbrndd-sbang, p srt, mod  
sft, mod cmt, arg- sil mtx, sl calc, sl  
mica, occ glau

MD 3632'  
INC 11.1°  
AZI 148.5°  
TVD 3595.7'

SHYSS: mgy, occ gybm, trnsi- op,  
vfgr, sbblky- sbplty, mod srt, sft- sl  
firm, sod cmt, pred arg mtx, sl calc,  
slty, grdg- shysltst  
SS: wh- mgy, s&p, clr- trnsi, f- mgr,  
blky- sbblky, sbrndd-sbang, p srt, mod  
sft, mod cmt, arg- sil mtx, sl calc, sl  
mica, occ glau



MD 3722'  
INC 11.9°  
AZI 151.9°  
TVD 3683.9'

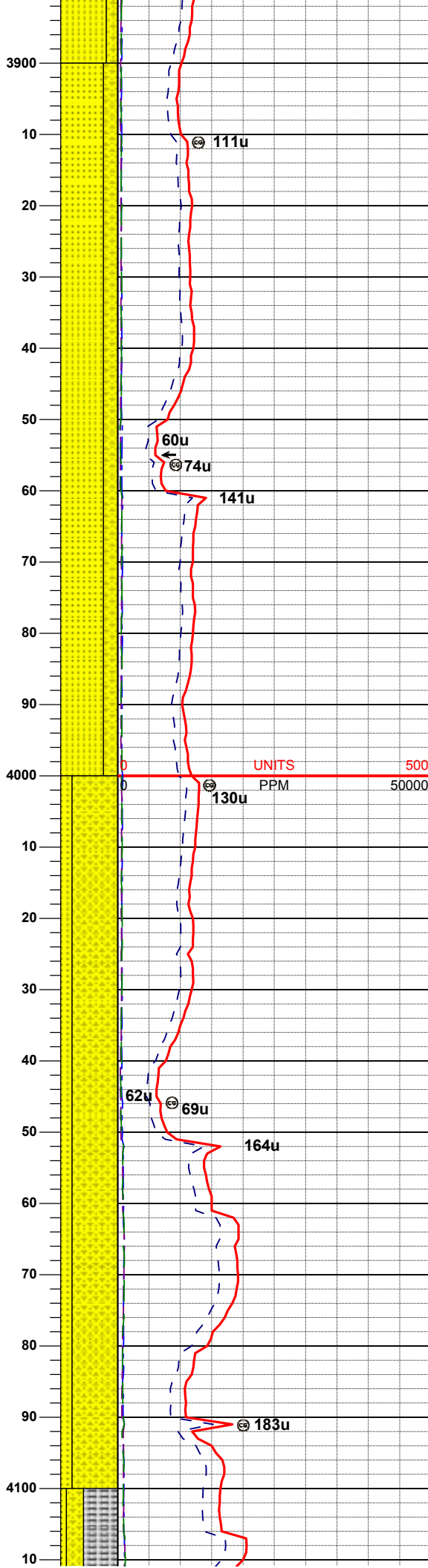
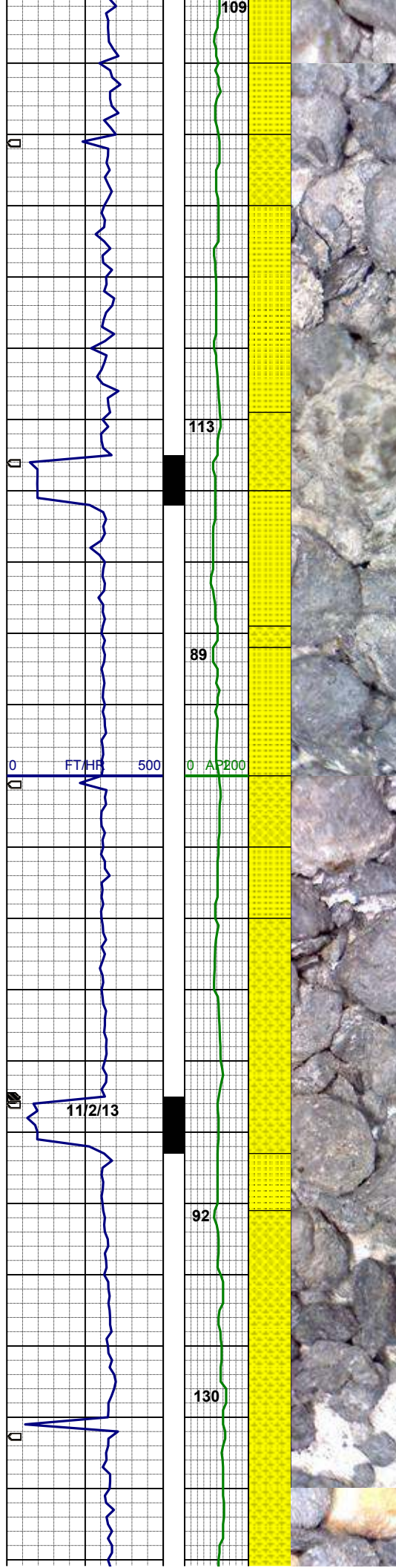
SS: wh, s&p, clr- trns, occ lt brn, f-  
mgr, blk- sbbky, lse, sbrndd-sbang,  
p srt, mod sft, mod cmt, arg- sil mtz, sl  
calc, sl mica, occ glau  
SHYSS: lt- mgy, vfgr, trns- op,  
sbrndd- sbply, p srt, vsft- sft, pred arg  
mtz, mod cmt, sl calc, slty, grdg-  
shysltst

WT 9.20 / VIS 35

MD 3811'  
INC 11.9°  
AZI 150.5°  
TVD 3771.0'

SS: wh, s&p, clr- trns, occ lt brn, f-  
mgr, blk- sbbky, lse, sbrndd-sbang,  
p srt, mod sft, mod cmt, arg- sil mtz, sl  
calc, sl mica, occ glau  
SHYSS: lt- mgy, vfgr, trns- op,  
sbrndd- sbply, p srt, vsft- sft, pred arg  
mtz, mod cmt, sl calc, slty, grdg-  
shysltst





MD 3901'  
INC 12.0°  
AZI 150.0°  
TVD 3859.0'

SS: wh, s&p, clr- trnsl, occ lt brn, f- mgr, blk- sbblky, lse, sbrndd-sbang, p srt, mod sft, mod cmt, arg- sil mtx, sl calc, sl mica, occ glau  
SHYSS: lt- mgy, vfgr, trnsl- op, sbrndd- sbplty, p srt, vsft- sft, pred arg mtx, mod cmt, sl calc, slty, grdg- shysltst

WT 9.60 / VIS 36

MD 3991'  
INC 10.9°  
AZI 149.6°  
TVD 3947.2'

SHYSS: mgy, occ gybrn, trnsl- op, vfgr, sbblky- sbplty, mod srt, sft- sl firm, sod cmt, pred arg mtx, sl calc, slty, grdg- shysltst  
SS: wh- mgy, s&p, clr- trnsl, f- mgr, blk- sbblky, sbrndd-sbang, p srt, mod sft, mod cmt, arg- sil mtx, sl calc, sl mica, occ glau

MD 4081'  
INC 10.2°  
AZI 145.0°  
TVD 4035.7'

WOB 20  
RPM 45  
PP 2500  
SPM 140

0 FT/HR 500

103

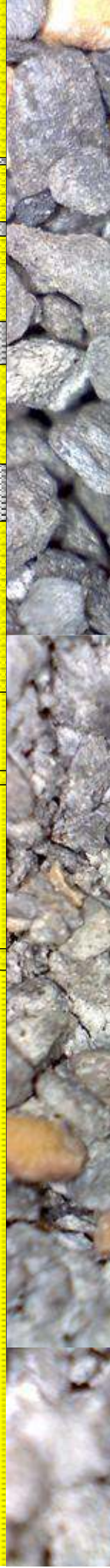
133

120

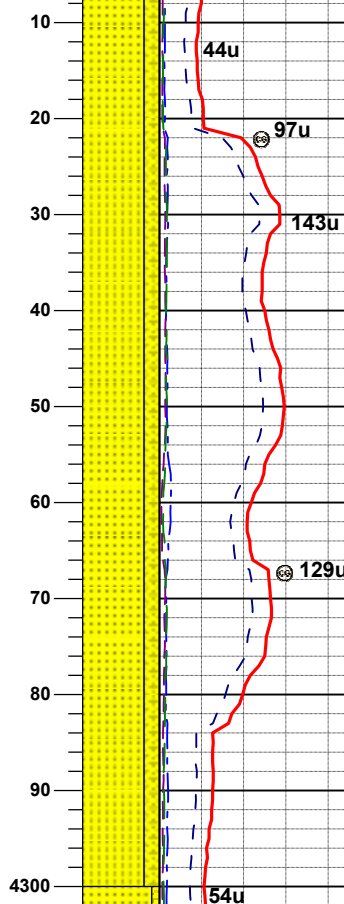
51

DRILLERS DEPTH  
CORRECTION

0 AR200



4200 UNITS 500  
PPM 50000



DRILLERS DEPTH  
CORRECTION

Depth: 4135'  
WT 9.2  
VIS 38  
YP 14  
pH 8.7  
Cl- 1100  
Ca++ 120

0100 HRS, 4135' MD  
TOOH FOR MWD TOOL, TIH  
RESUMED DRILLING 1130 HRS

SLTYSH: m- dkgy, sbblky-sbplty, occ  
plty, sl sft- firm, sl calc, sdy ip, grdg-  
shyss, tr bent  
SS: wh- mgy, s&p ip, clr- trnsi, occ op,  
f- mgr, blky- sbblky, sbang, mod srt,  
brit- sl firm, mod cmt, pred sil mtx, sl  
calc, sl mica, tr glau

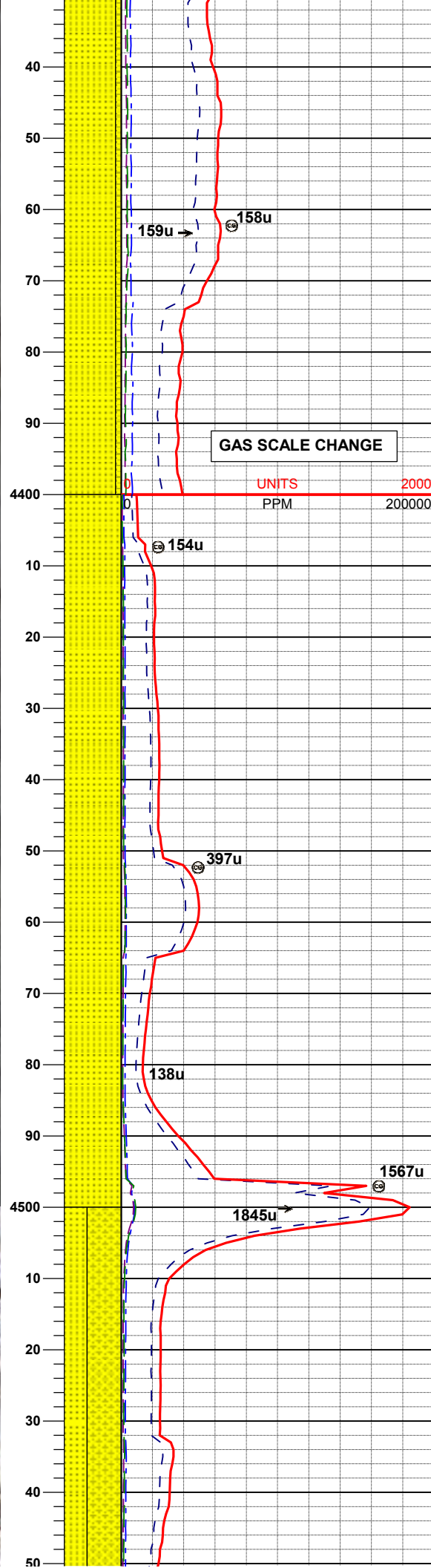
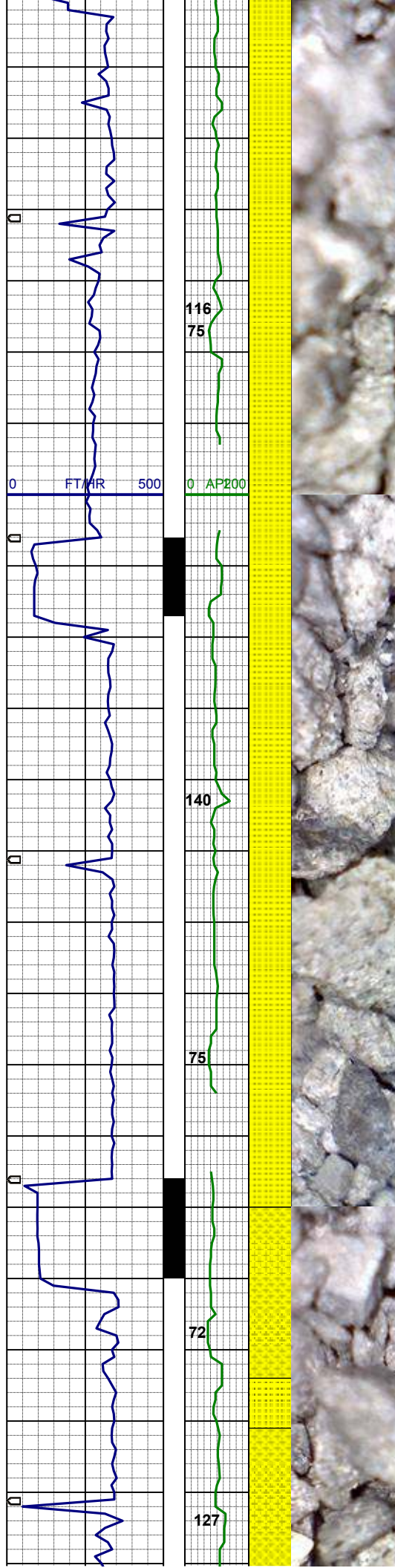
MD 4171'  
INC 9.1°  
AZI 141.7°  
TVD 4124.4'

SS: wh- mgy, occ dk gy, s&p, clr-  
trnsi, occ op, f- mgr, blky- sbblky, pred  
sbang gr, mod srt, brit- sl firm, mod  
cmt, arg- sil mtx, sl calc, sl mica  
SHYSS: m- dkgy, trnsi- op, vf- fgr,  
sbblky- sbplty, mod srt, sft- sl firm,  
pred arg mtx, mod, sl calc, slty, grdg-  
sltysh

MD 4261'  
INC 9.5°  
AZI 140.6°  
TVD 4213.2'

SS: m- dkgy, sme wh, s&p ip, clr-  
trnsi, occ op, f- mgr, blky- sbblky, pred  
sbang gr, mod srt, brit- sl firm, mod  
cmt, arg- sil mtx, sl calc, sl mica





trnsi, occ op, t- mgr, biky- sbbiky, pred  
sbang gr, mod srt, brit- sl firm, mod  
cmt, arg- sil mtx, sl calc, sl mica  
SHYSS: m- dkgy, trnsi- op, vf- fgr,  
sbbiky- sbply, mod srt, sft- sl firm,  
pred arg mtx, mod, sl calc, slty, grdg-  
sltysh

MD 4351'  
INC 9.1°  
AZI 144.5°  
TVD 4302.1

GAS SCALE CHANGE

UNITS 2000  
PPM 200000

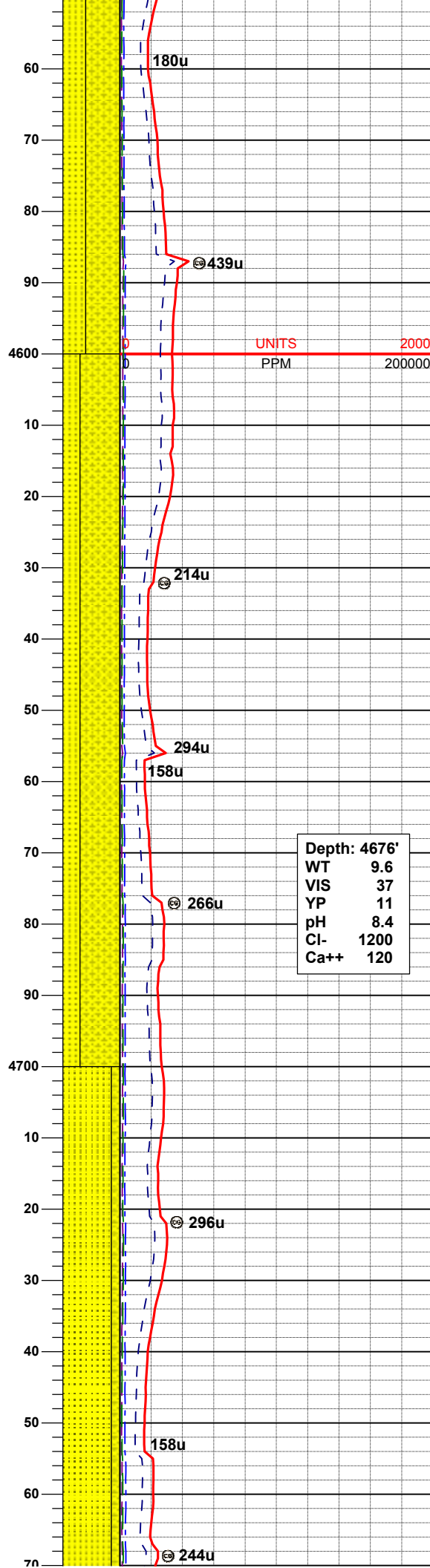
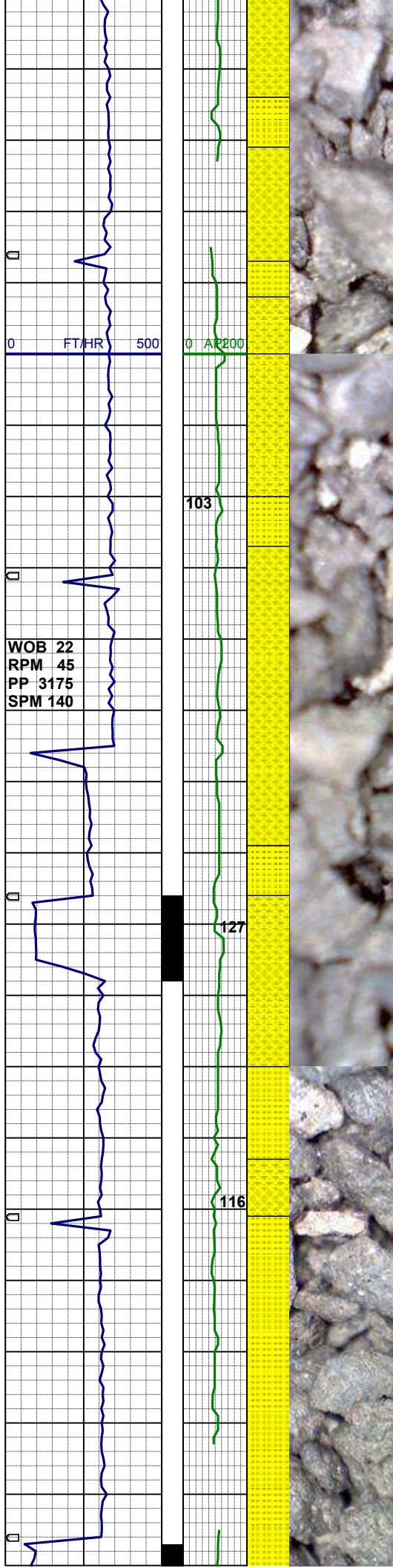
WT 9.5 / VIS 39

MD 4441'  
INC 9.0°  
AZI 139.2°  
TVD 4390.9'

SS: w- mgy, occ dkgy, s&p ip, clr-  
trnsi, occ op, f- mgr, biky- sbbiky, pred  
sbang gr, mod srt, brit- sl firm, mod  
cmt, arg- sil mtx, sl calc, sl mica, tr  
glau

MD 4531'  
INC 10.3°  
AZI 141.0°  
TVD 4479.7'

SHYSS: m- dkgy, trnsi- op, vf- fgr,  
sbbiky- sbply, mod srt, sft- sl firm,



pred arg mtx, mod, sl calc, slty  
SS: m- dkgy, sme wh, s&p ip, clr-  
trnsi, occ op, f- mgr, blk- sbbiky, pred  
sbang gr, mod srt, brit- sl firm, mod  
cmt, arg- sil mtx, sl calc, sl mica

WT 9.6 / VIS 37

MD 4621'  
INC 9.5°  
AZI 139.6°  
TVD 4568.3'

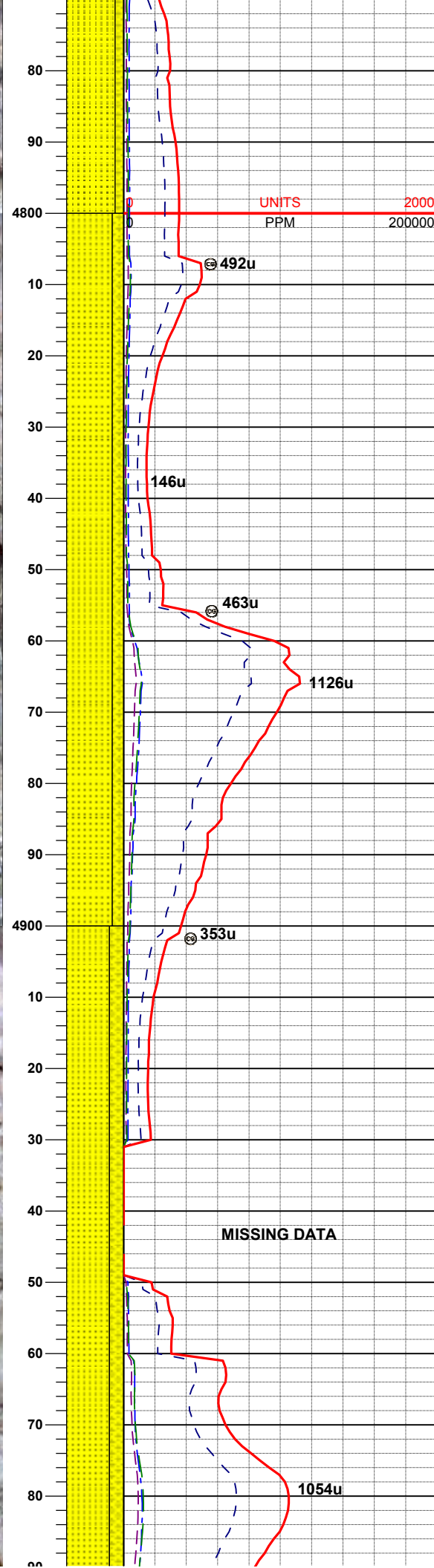
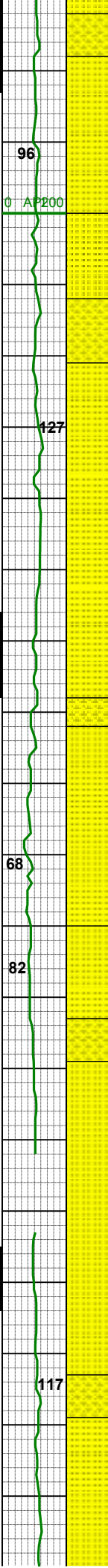
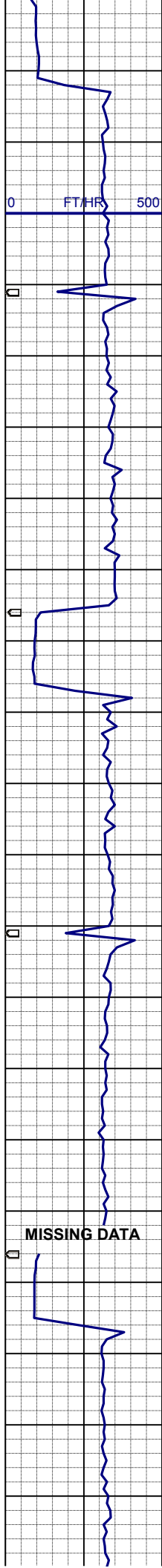
SHYSS: m- dkgy, trnsi- op, vf- fgr,  
sbbiky- sbpity, mod srt, sft- sl firm,  
pred arg mtx, mod, sl calc, slty  
SS: m- dkgy, sme wh, s&p ip, clr-  
trnsi, occ op, f- mgr, blk- sbbiky, pred  
sbang gr, mod srt, brit- sl firm, mod  
cmt, arg- sil mtx, sl calc, sl mica

Depth: 4676'  
WT 9.6  
VIS 37  
YP 11  
pH 8.4  
Cl- 1200  
Ca++ 120

MD 4711'  
INC 9.0°  
AZI 140.8°  
TVD 4657.1'

SS:- SHYSS: wh- mgy, s&p ip, clr-  
trnsi, sme op, f- mgr, occ vfgr, blk-  
sbbiky, sbrndd-sbang, p srt, mod sft,  
mod cmt, arg- sil mtx, sl calc, sl mica,  
tr glau, tr bent





MD 4801'  
INC 9.3°  
AZI 147.1°  
TVD 4746.0'

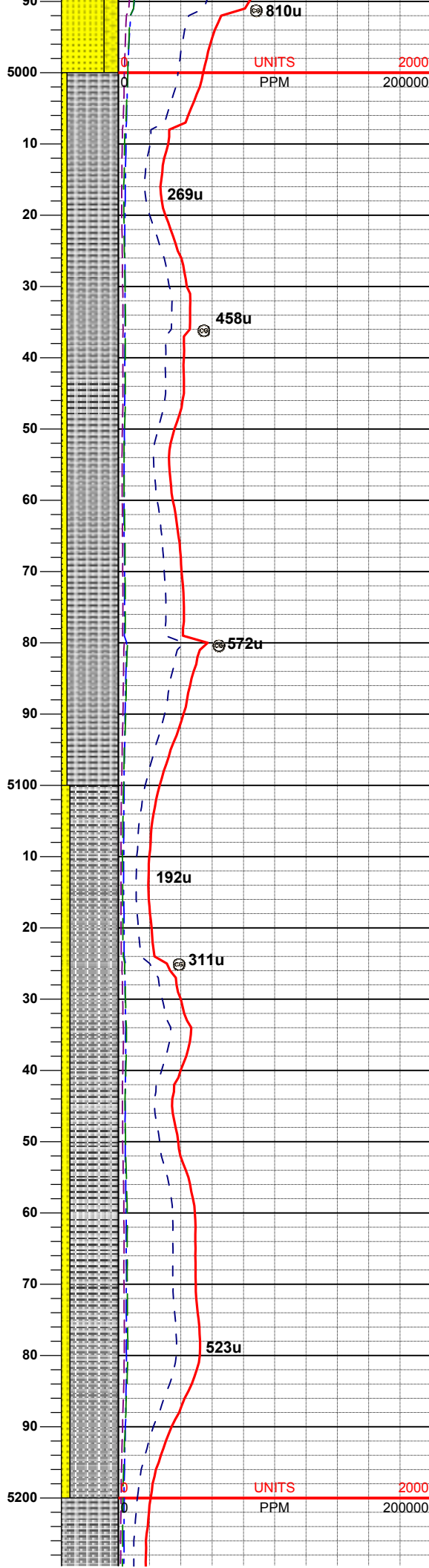
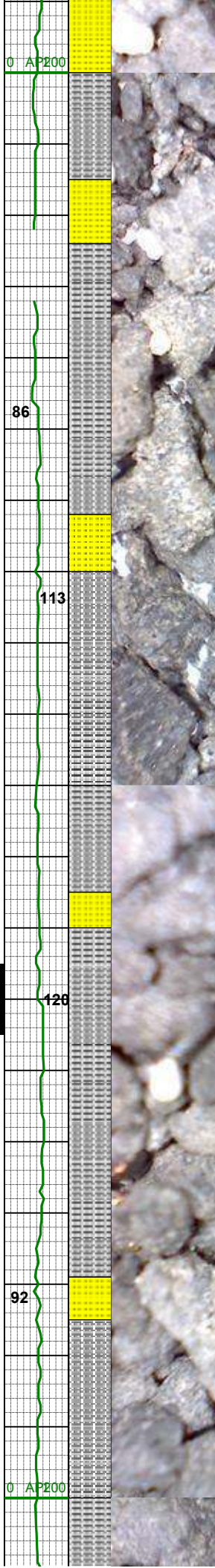
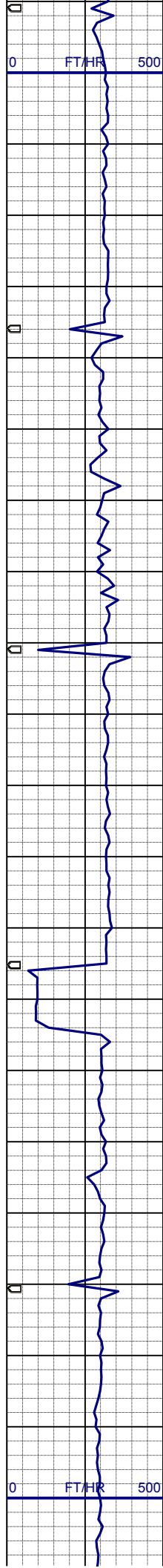
SS:- SHYSS: wh- mgy, s&p ip, clr-  
trnsi, sme op, f- mgr, occ vfgr, blk-  
sbbiky, sbrndd-sbang, p srt, mod sft,  
mod cmt, arg- sil mtz, sl calc, sl mica,  
tr glau, tr bent

MD 4891'  
INC 9.8°  
AZI 146.4°  
TVD 4834.8'

WT 9.6 / VIS 38

SS:- SHYSS: wh- mgy, s&p ip, clr-  
trnsi, sme op, f- mgr, occ vfgr, blk-  
sbbiky, sbrndd-sbang, p srt, mod sft,  
mod cmt, arg- sil mtz, sl calc, sl mica,  
tr glau, tr bent

MD 4981'  
INC 9.9°  
AZI 141.3°  
TVD 4923.4'



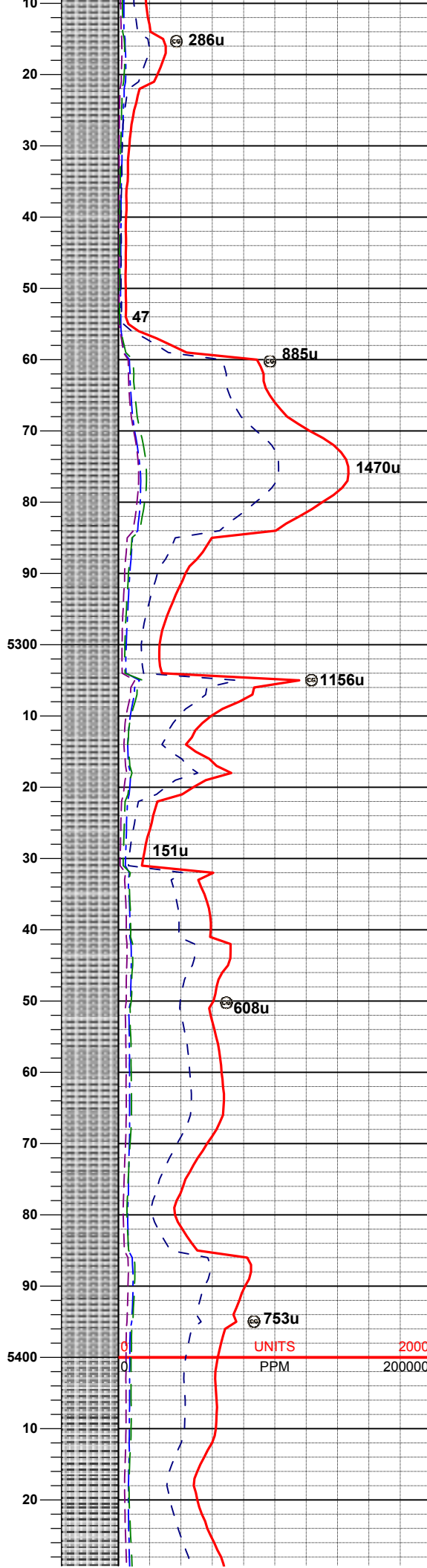
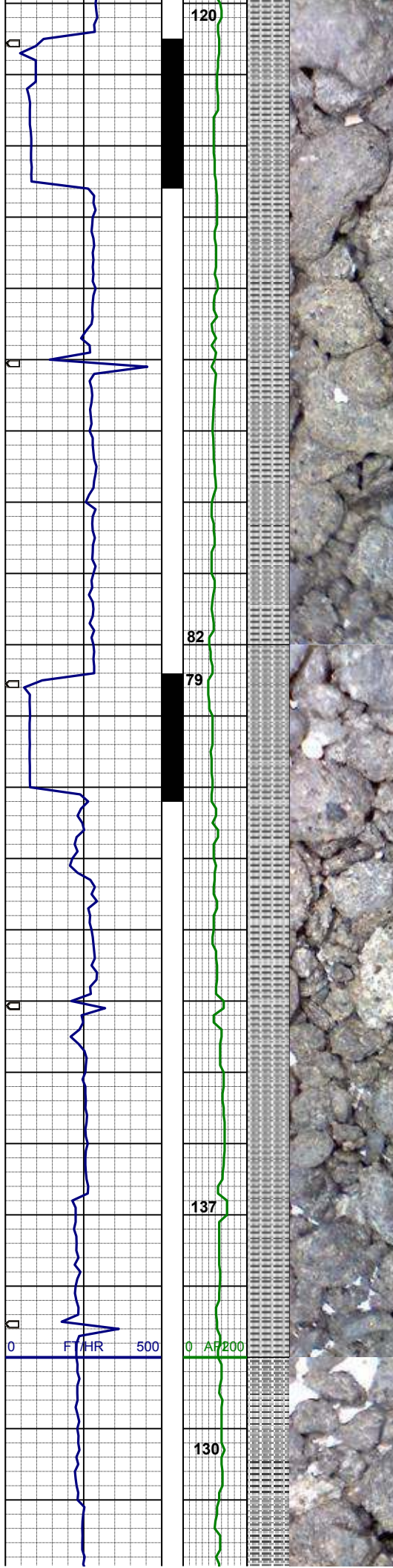
SLTYSH: lt-mgy, gybrn, sbbky-sbplty,  
occ plty, sft-firm, arg, sl calc, pyr lam,  
sdy ip, grdg- shyss  
SS: wh- mgy, s&p, clr- trns, sme op ,  
mgr, blk- sbbky, pred sbang gr, mod  
srt, sl firm, m cmt, sil- arg mtx, vs  
calc, sl mica

MD 5071'  
INC 9.0°  
AZI 140.5°  
TVD 5012.2'

SLTYSH: lt-mgy, gybrn, sbbky-sbplty,  
occ plty, sft-firm, arg, sl calc, pyr lam,  
sdy ip, grdg- shyss  
SS: wh- mgy, s&p, clr- trns, sme op ,  
mgr, blk- sbbky, pred sbang gr, mod  
srt, sl firm, m cmt, sil- arg mtx, vs  
calc, sl mica

MD 5160'  
INC 8.1°  
AZI 142.2°  
TVD 5100.2'





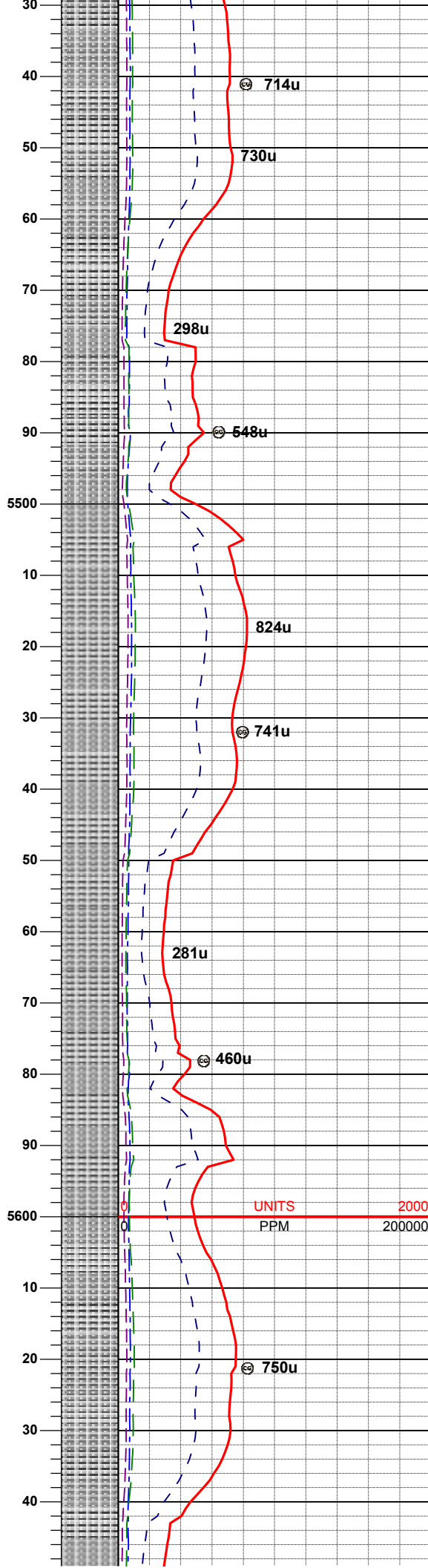
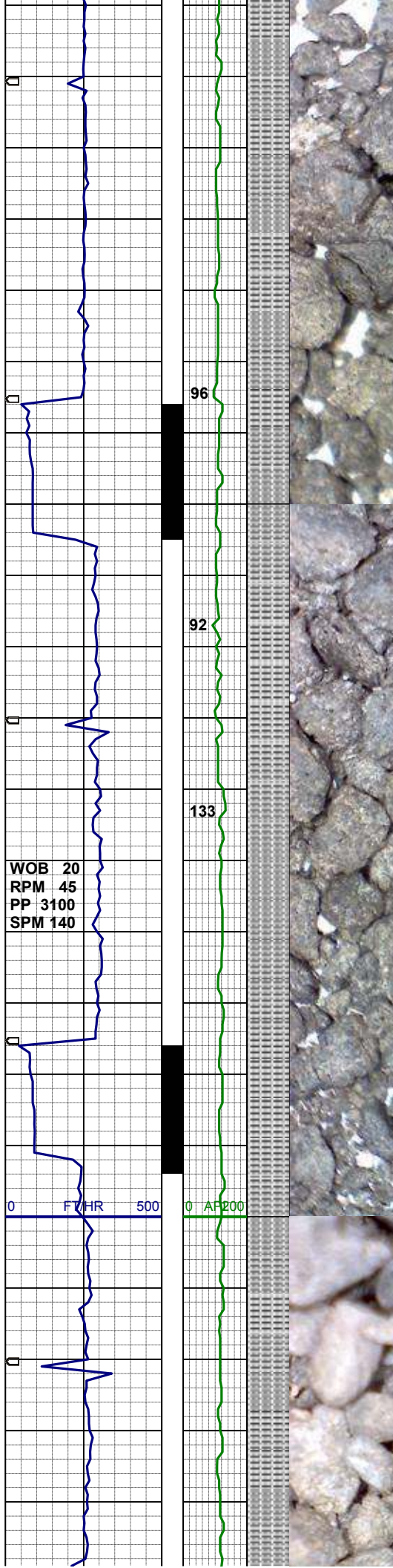
SLTYSH: lt-mgy, gybrn, occ dkgy, sbbkly-sbply, occ plty, sft-firm, arg, sl calc, occ calc frag, sl sdy ip, grd-shyss

MD 5250'  
INC 8.0°  
AZI 141.3°  
TVD 5189.3'

MD 5340'  
INC 9.4°  
AZI 141.9°  
TVD 5278.3'

SLTYSH: lt-mgy, gybrn, occ dkgy, sbbkly-sbply, occ plty, sft-firm, arg, sl calc, occ calc frag, sl sdy ip, grd-shyss

MD 5430'  
INC 7.7°  
AZI 141.9°  
TVD 5389.3'



AZI 141.0°  
TVD 5367.3'

SLTYSH: lt-mgy, gybrn, occ dkgy, sbbkly-sbplty, occ plty, sft-firm, arg, sl calc, occ calc frag, sl sdy ip, grdg-shyss

MD 5520'  
INC 7.6°  
AZI 144.0°  
TVD 5456.5'

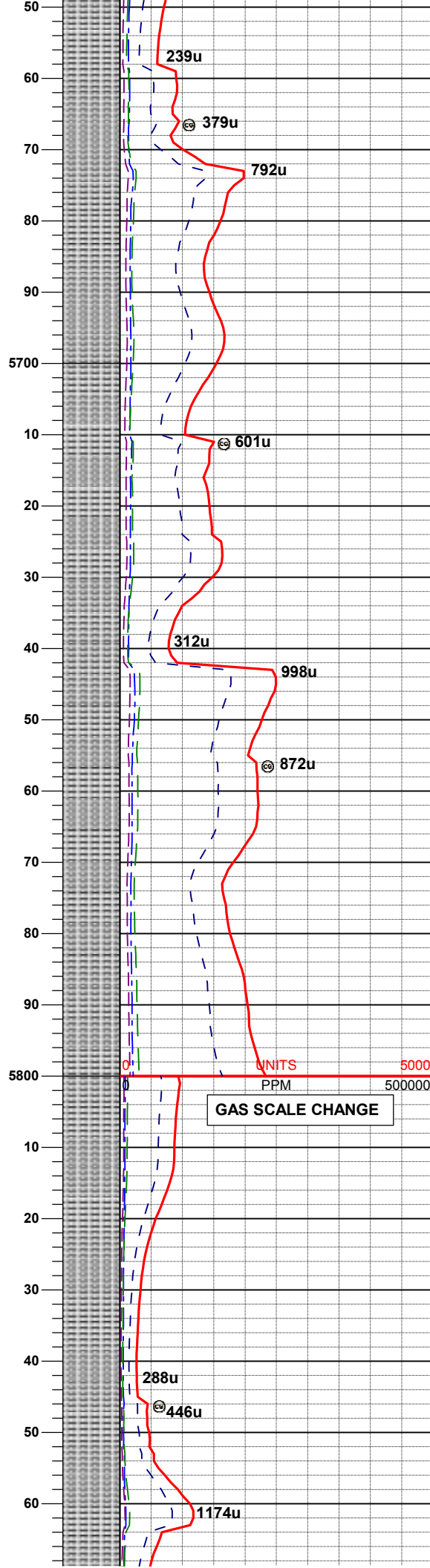
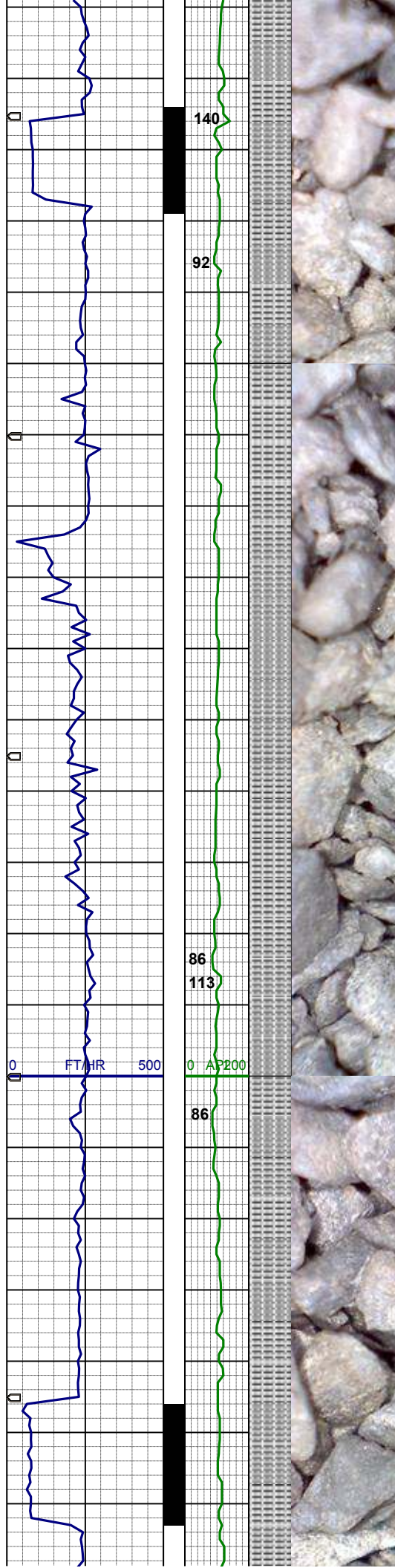
WT 9.7 / VIS 38

SLTYSH: lt-mgy, gybrn, occ dkgy, sbbkly-sbplty, occ plty, sft-firm, arg, sl calc, occ calc frag, sl sdy ip, grdg-shyss

MD 5610'  
INC 7.5°  
AZI 145.6°  
TVD 5545.7'

SLTYSH: lt-mgy, gybrn, occ dkgy,





sbbiky-sbply, occ pty, sft-firm, arg, sl  
calc, occ calc frag, sl sdy ip, grd-  
shyss

MD 5700'  
INC 7.4°  
AZI 142.4°  
TVD 5635.0'

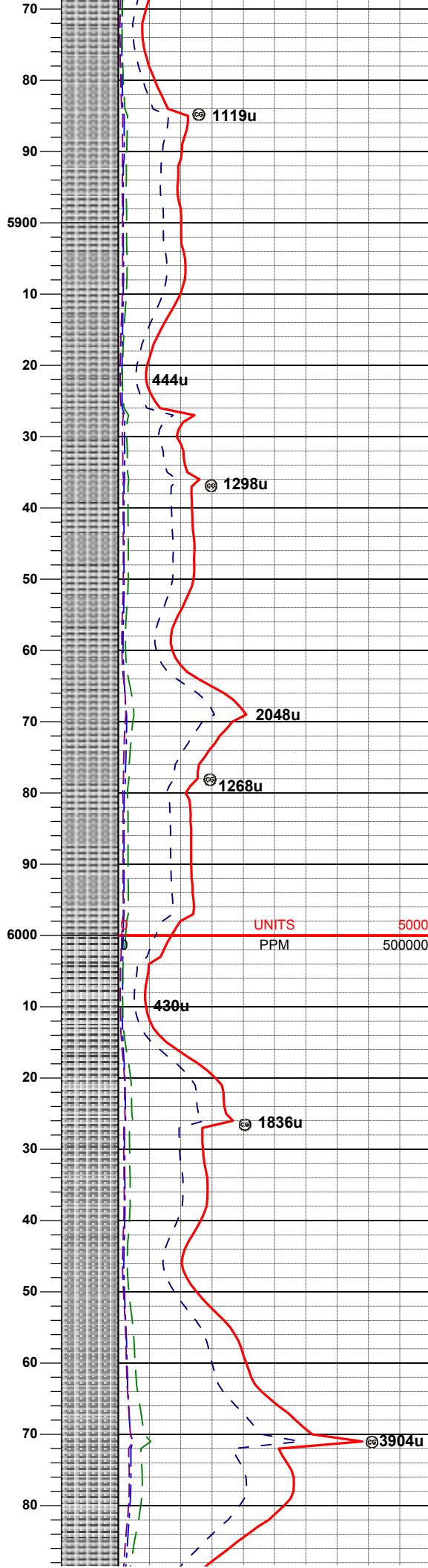
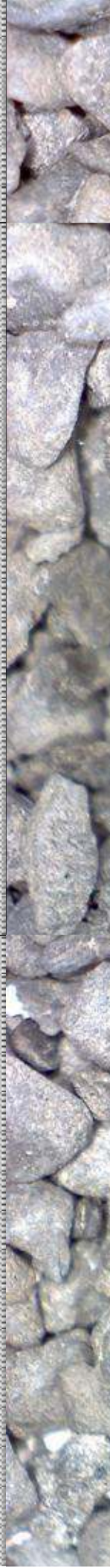
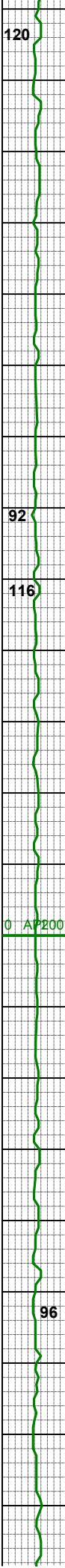
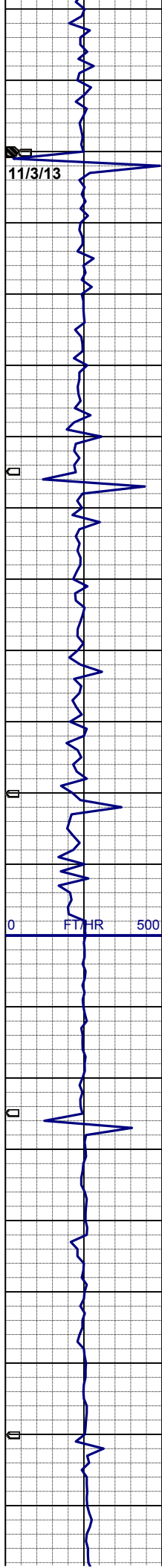
SLTYSH: lt-mgy, gybrn, occ dkgy,  
sbbiky-sbply, occ pty, sft-firm, arg, sl  
calc, occ calc frag, sl sdy ip, grd-  
shyss

MD 5790'  
INC 5.2°  
AZI 132.4°  
TVD 5724.4'

UNITS 5000  
PPM 500000  
GAS SCALE CHANGE

WT 9.8 / VIS 38

SLTYSH: lt-mgy, gybrn, occ dkgy,  
sbbiky-sbply, occ pty, sft-firm, arg, sl  
calc, occ calc frag, sl sdy ip, grd-  
shyss



MD 5880'  
INC 5.6°  
AZI 139.2°  
TVD 5814.0'

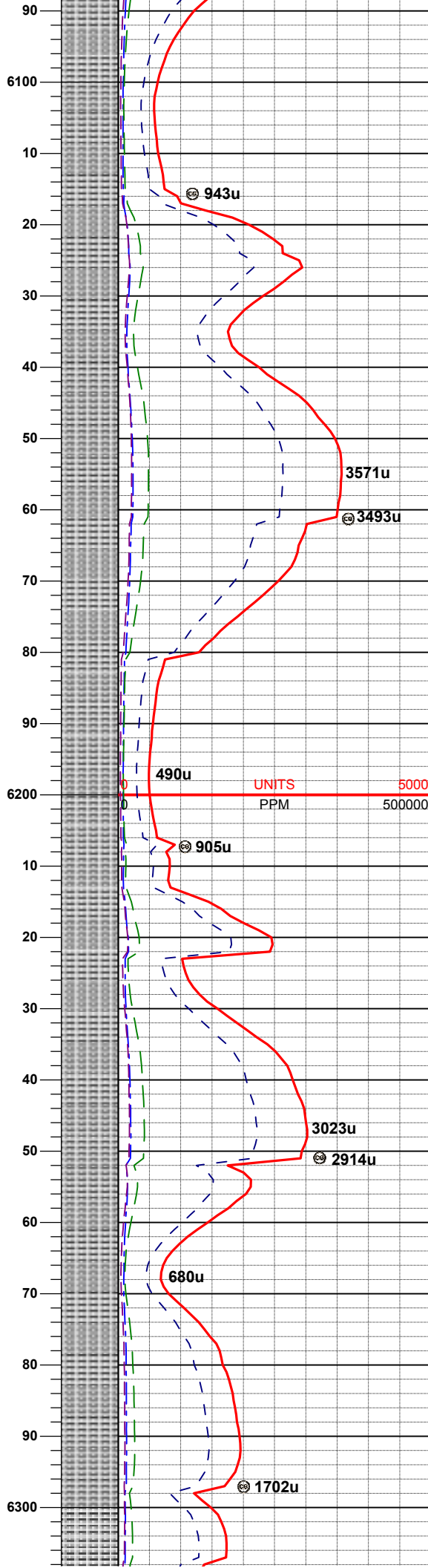
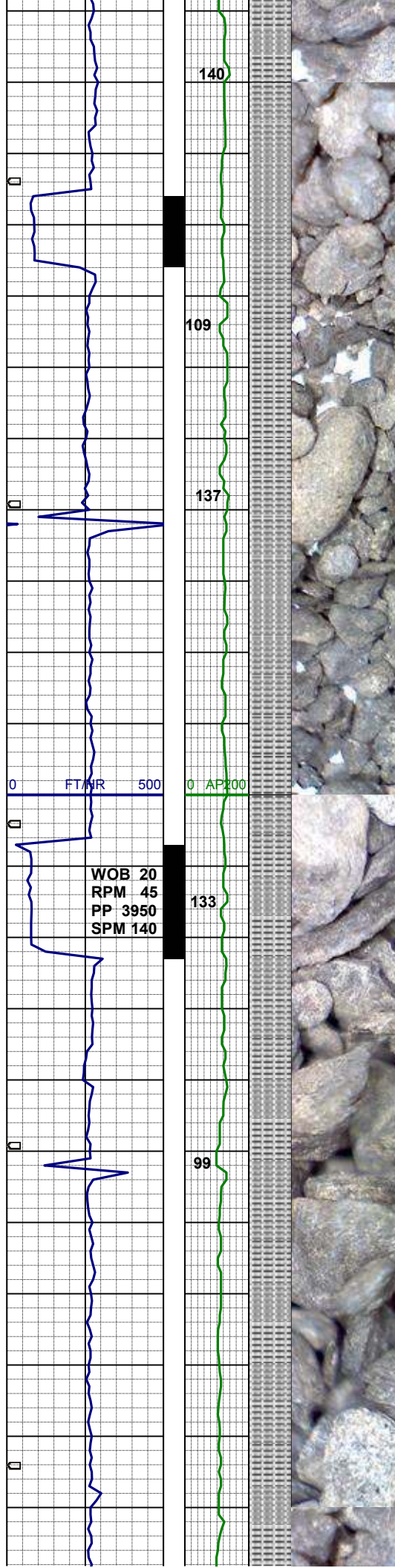
SLTYSH: lt-mgy, gybrn, occ dkgy, sbblky-sbplty, occ plty, sft-firm, arg, sl calc, occ calc frag, sl sdy ip, grdg-shyss

MD 5970'  
INC 4.2°  
AZI 140.3°  
TVD 5903.7'

SLTYSH: lt-mgy, gybrn, occ dkgy, sbblky-sbplty, occ plty, sft-firm, arg, sl calc, occ calc frag, sl sdy ip, grdg-shyss

MD 6059'  
INC 3.1°  
AZI 139.6°  
TVD 5992.5'



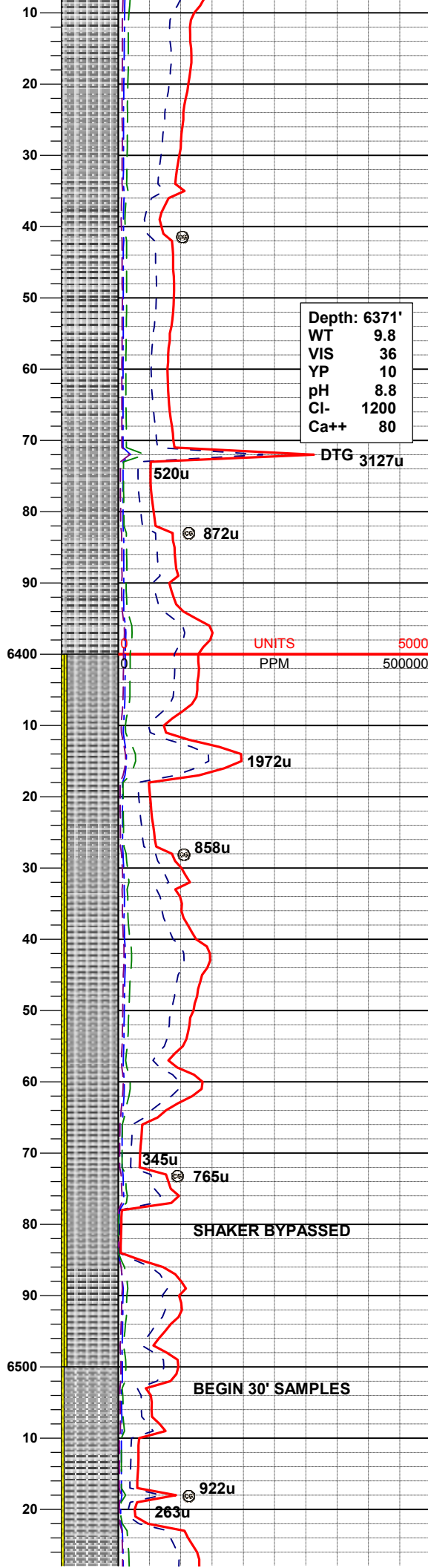
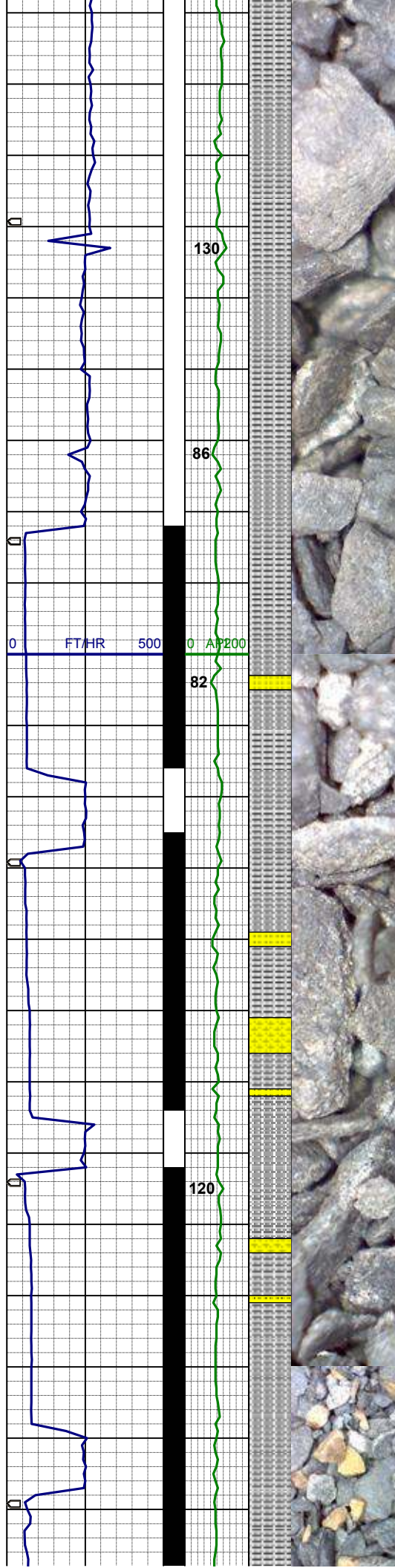


MD 6149'  
INC 1.6°  
AZI 175.4°  
TVD 6082.4'

SLTYSH: lt-mgy, gybrn, occ dkgy, sbbly-sbply, occ pty, sft-firm, arg, sl calc, occ calc frag, sl sdy ip, grdg-shyss

MD 6239'  
INC 0.4°  
AZI 269.8°  
TVD 6172.4'

SLTYSH: lt-mgy, gybrn, occ dkgy, sbbly-sbply, occ pty, sft-firm, arg, sl calc, occ calc frag, sl sdy ip, grdg-shyss



MD 6329'  
INC 0.4°  
AZI 229.9°  
TVD 6262.4'

SLTYSH: lt-mgy, gybrn, occ dkgy, sbblky-sbply, occ pty, sft- sl firm, sl calc, occ calc frag, sl sdy ip, grdg-shyss

**RIG SERVICE  
X/O WASH PIPE**

MD 6374'  
INC 0.4°  
AZI 247.5°  
TVD 6307.4'

WT 10.35 / VIS 40

MD 6419'  
INC 3.3°  
AZI 269.7°  
TVD 6352.4'

SLTYSH: m- dkgy, gybrn, sbply- pty, mod firm, sl calc, sdy ip, tr bent, grdg-shyss, occ f- mgr wh- m gy ss

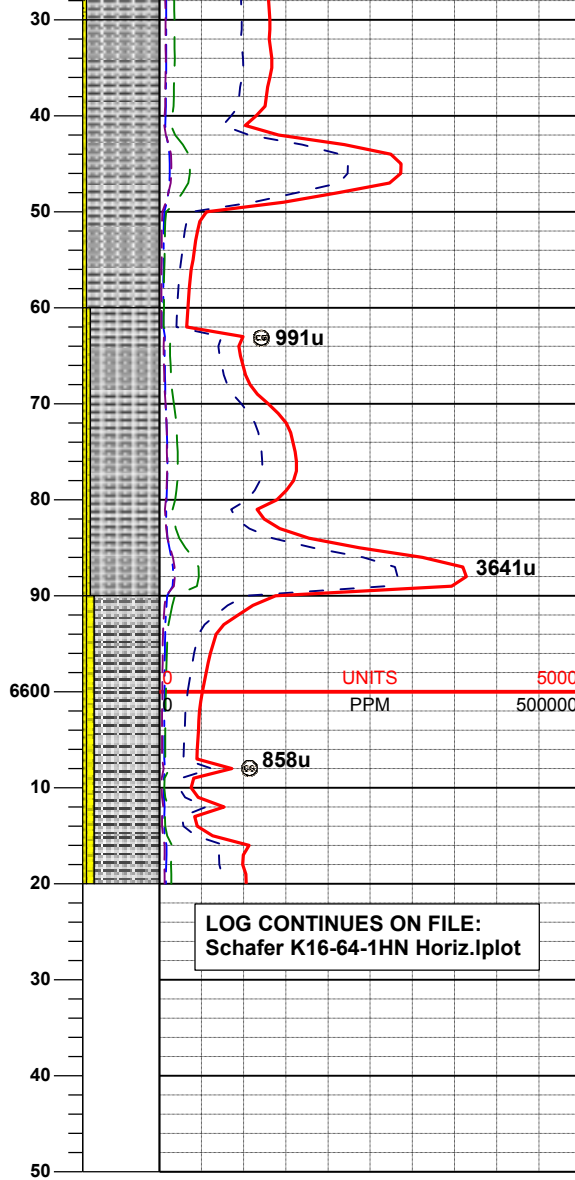
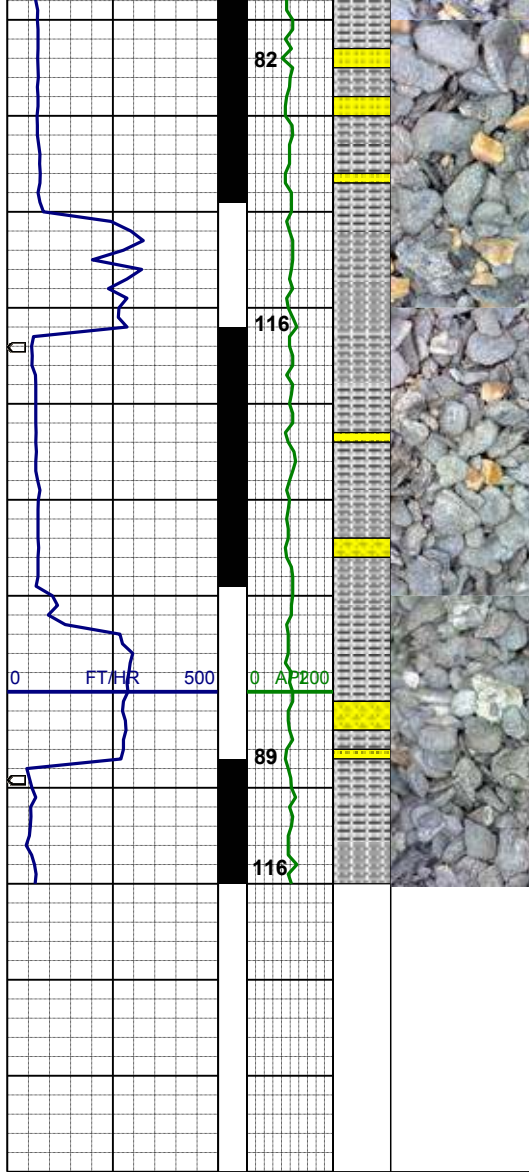
MD 6464'  
INC 6.8°  
AZI 272.7°  
TVD 6397.2'

MD 6509'  
INC 10.2°  
AZI 273.4°  
TVD 6441.7'

WT 10.35 / VIS 39

SLTYSH: m- dkgy, gybrn, sbply- pty, mod firm, sl calc, sdy ip, grdg- shyss





SLTYSH: m- dkgy, gybrn, sbplty- plty,  
mod firm, sl calc, sdy ip, grdg- shyss

MD 6554'  
INC 12.6°  
AZI 269.8°  
TVD 6485.8'

SLTYSH: m- dkgy, gybrn, sbplty- plty,  
mod firm, sl calc, sdy ip, tr bent, grdg-  
shyss, occ f- mgr wh- m gy ss

MD 6599'  
INC 14.6°  
AZI 268.4°  
TVD 6529.5'

SLTYSH: m- dkgy, gybrn, sbplty- plty,  
mod firm, sl calc, sdy ip, tr bent, grdg-  
shyss, occ f- mgr wh- m gy ss

LOG CONTINUES ON FILE:  
Schafer K16-64-1HN Horiz.Iplot

THANK YOU FOR CHOOSING  
COLUMBINE LOGGING, INC.