



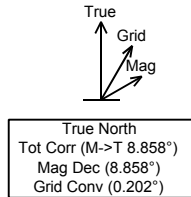
OXY

Rev 5

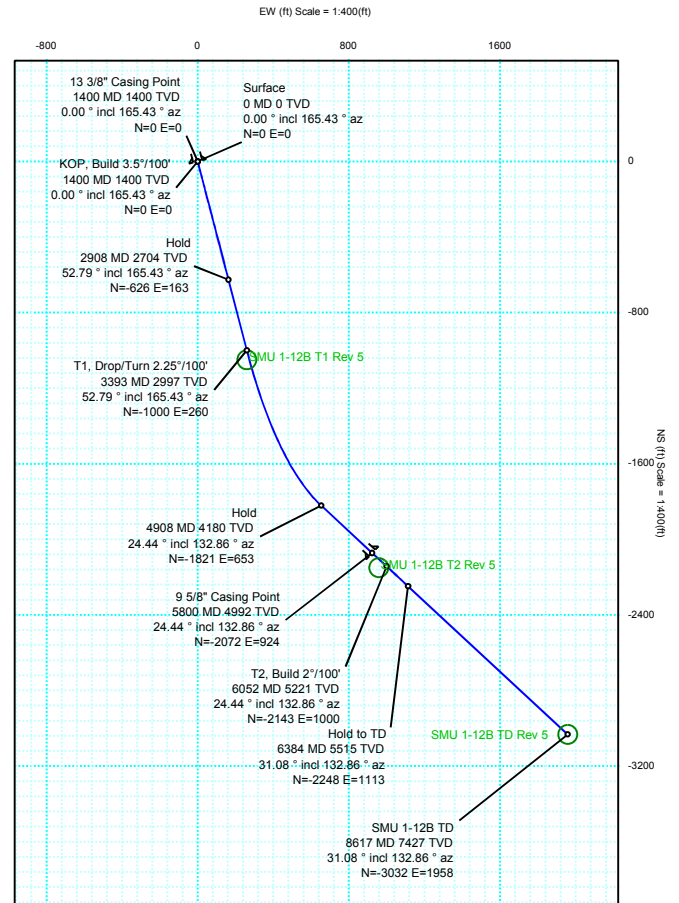
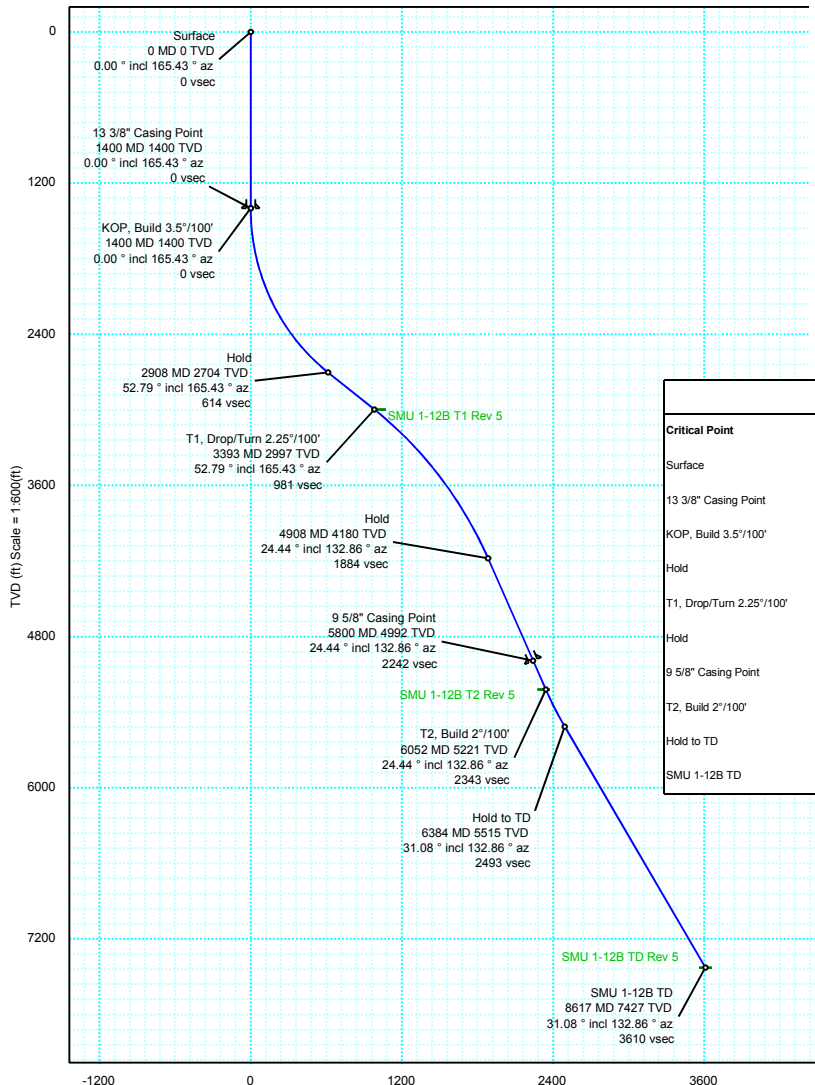


Borehole:	Well:	Field:	Structure:
Original Hole	SMU 1-12B	CO, Huerfano County (NAD 83 SZ)	Sec 12-28S-70W
Gravity & Magnetic Parameters		Surface Location	Miscellaneous
Model: HDGM 2013 Dip: 64.302° Date: 17-Apr-2014	Surface Location NAD83 Colorado State Plane, Southern Zone, US Feet	1353439.343ft	Slot: SMU 1-12B TVD Ref: RKB(8577ft above MSL)
MagDec: 8.858° FS: 51355.76nT Gravity FS: 998.988mgn (9.80665 Based)	Lat: N 37 38 12.76 Northing: 1353439.343ft Grid Conv: 0.2016°	US 3095182.118ft	Plan: SMU 1-12B R5 mdv 26Mar14
	Lon: W 105 10 16.65 Easting: US	Scale Fact: 0.9999513	

Proposal



Surface Location									
Northing : 1353439.343		Easting: 3095182.118		Latitude : N 37 38 12.76		Longitude: W 105 10 16.65		VSec Azimuth: 147.14 6	
Target Description		Grid Coord						Local Coord	
Target Name	Latitude	Longitude	Northing	Easting	TVD	VSec	N(+)/S(-)	E(+)/W(-)	
SMU 1-12B T1 Rev 5	N 37 38 2.38	W 105 10 13.42	1352390.32	3095445.80	2997.00	1023.11	-1050.00	260.00	
SMU 1-12B T2 Rev 5	N 37 37 51.50	W 105 10 4.74	1351292.84	3096147.86	5221.00	2325.96	-2150.00	958.23	
SMU 1-12B TD Rev 5	N 37 37 42.78	W 105 9 52.31	1350414.01	3097150.94	7427.00	3609.74	-3032.40	1958.26	



Critical Points								
Critical Point	MD	INCL	AZIM	TVD	VSEC	N(+)/S(-)	E(+)/W(-)	DLS
Surface	0.00	0.00	165.43	0.00	0.00	0.00	0.00	
13 3/8\" Casing Point	1400.00	0.00	165.43	1400.00	0.00	0.00	0.00	0.00
KOP, Build 3.5\"/100'	1400.00	0.00	165.43	1400.00	0.00	0.00	0.00	0.00
Hold	2908.31	52.79	165.43	2703.78	614.42	-626.25	162.82	3.50
T1, Drop/Turn 2.25\"/100'	3393.19	52.79	165.43	2997.00	981.11	-1000.00	260.00	0.00
Hold	4907.91	24.44	132.86	4179.57	1884.29	-1821.27	653.11	2.25
9 5/8\" Casing Point	5800.00	24.44	132.86	4991.74	2241.95	-2072.33	923.64	0.00
T2, Build 2\"/100'	6051.82	24.44	132.86	5221.00	2342.91	-2143.20	1000.00	0.00
Hold to TD	6383.92	31.08	132.86	5514.71	2492.72	-2248.35	1113.32	2.00
SMU 1-12B TD	8616.74	31.08	132.86	7427.00	3609.74	-3032.40	1958.26	0.00

Vertical Section (ft) Azim = 147.146° Scale = 1:600(ft) Origin = 0N/-S, 0E/-W