

BONANZA CREEK OIL COMPANY

Location: COLORADO Slot: SLOT#04 STATE ANTELOPE P-T-30HNB (460'FNL & 840'FEL, SEC.30)
Field: WELD COUNTY Well: STATE ANTELOPE P-T-30HNB
Facility: SEC.30-T5N-R62W Wellbore: STATE ANTELOPE P-T-30HNB PWB

Plot reference wellpath is STATE ANTELOPE P-T-30HNB (REV-A.0) PWP

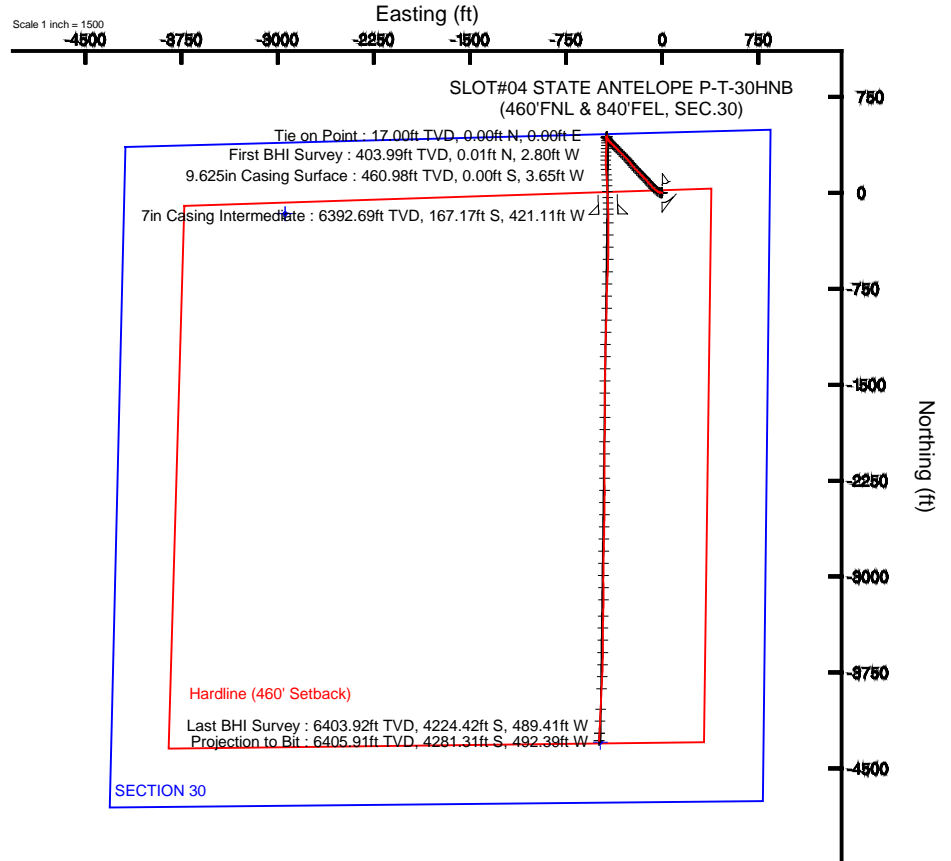
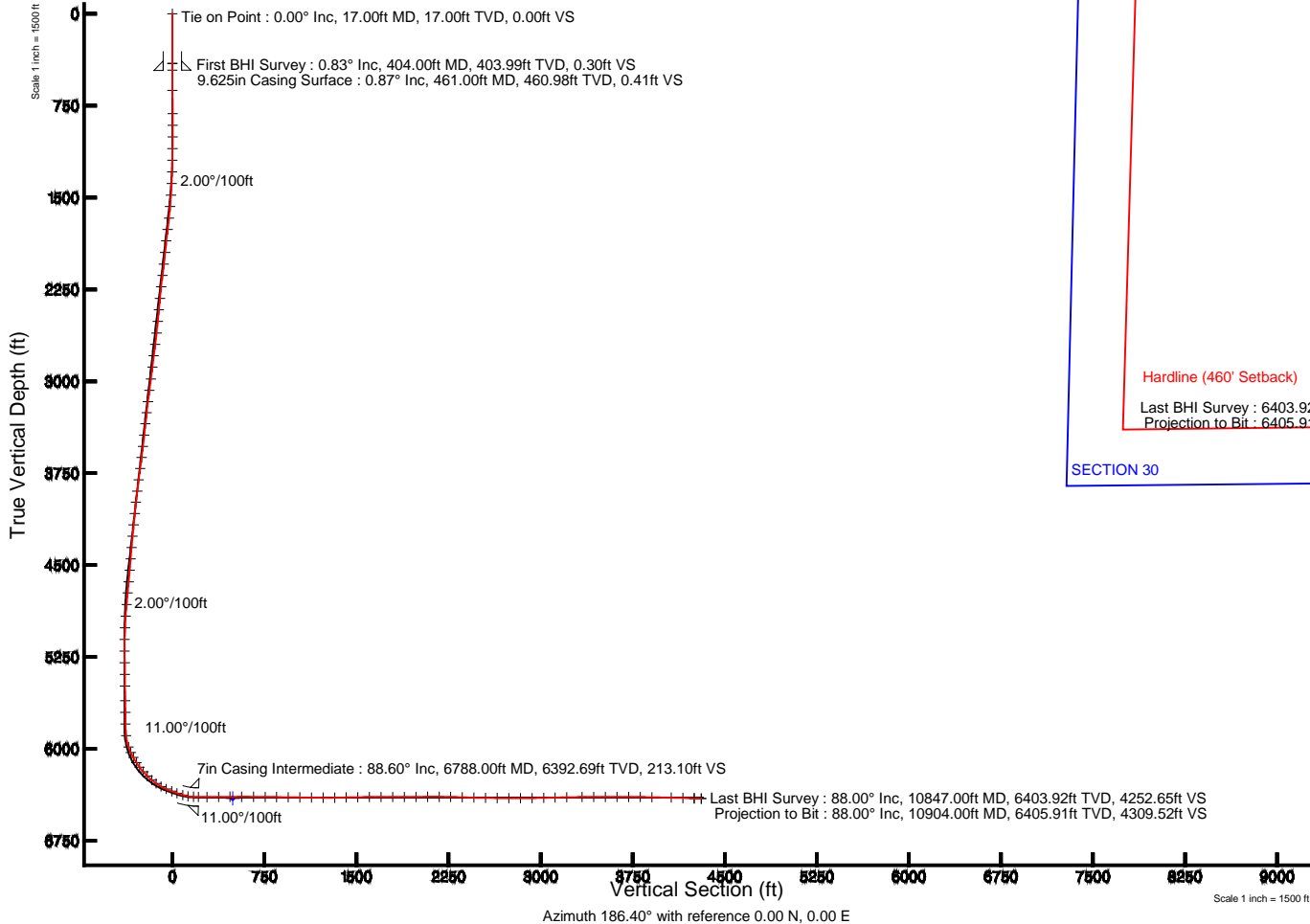
True vertical depths are referenced to CADE 26 (RKB)	Grid System: NAD83 / Lambert Colorado SP, Northern Zone (501), US feet
Measured depths are referenced to CADE 26 (RKB)	North Reference: True north
CADE 26 (RKB) to Mean Sea Level: 4678 feet	Scale: True distance
Mean Sea Level to Mud line (At Slot: SLOT#04 STATE ANTELOPE P-T-30HNB (460'FNL & 840'FEL, SEC.30)): 0 feet	Depths are in feet
Coordinates are in feet referenced to Slot	Created by: guenaler on 5/13/2014

Location Information

Facility Name		Grid East (US ft)	Grid North (US ft)	Latitude	Longitude
SEC.30-T5N-R62W		3314735.928	1381829.438	40°22'33.672"N	104°22'13.080"W
Slot	Local N (ft)	Local E (ft)	Grid East (US ft)	Grid North (US ft)	Latitude
SLOT#04 STATE ANTELOPE P-T-30HNB (460'FNL & 840'FEL, SEC.30)	164.11	2942.22	3317875.688	1382031.013	40°22'35.292"N
CADE 26 (RKB) to Mud line (At Slot: SLOT#04 STATE ANTELOPE P-T-30HNB (460'FNL & 840'FEL, SEC.30))				4678ft	
Mean Sea Level to Mud line (At Slot: SLOT#04 STATE ANTELOPE P-T-30HNB (460'FNL & 840'FEL, SEC.30))				0ft	
CADE 26 (RKB) to Mean Sea Level				4678ft	

Survey Program

Start MD (ft)	End MD (ft)	Tool	Model	Log Name/Comment	Wellbore
17.00	10938.70	NavitTrak	NavitTrak (Standard)		STATE ANTELOPE P-T-30HNB PWB



BGGM (1945.0 to 2015.0) Dip: 67.00° Field: 52813.7 nT
Magnetic North is 8.33 degrees East of True North (at 1/7/2014)

To correct azimuth from Magnetic to True add 8.33 degrees



Actual Wellpath Report

STATE ANTELOPE P-T-30HNB AWP

Page 1 of 7



REFERENCE WELLPATH IDENTIFICATION

Operator	BONANZA CREEK OIL COMPANY	Slot	SLOT#04 STATE ANTELOPE P-T-30HNB (460'FNL & 840'FEL, SEC.30)
Area	COLORADO	Well	STATE ANTELOPE P-T-30HNB
Field	WELD COUNTY	Wellbore	STATE ANTELOPE P-T-30HNB AWB
Facility	SEC.30-T5N-R62W		

REPORT SETUP INFORMATION

Projection System	NAD83 / Lambert Colorado SP, Northern Zone (501), US feet	Software System	WellArchitect® 4.0.0
North Reference	True	User	Guenaler
Scale	0.999959	Report Generated	5/13/2014 at 10:42:54 AM
Convergence at slot	n/a	Database/Source file	WA_Denver/STATE_ANTELOPE_P-T-30HNB_AWB.xml

WELLPATH LOCATION

	Local coordinates		Grid coordinates		Geographic coordinates	
	North[ft]	East[ft]	Easting[US ft]	Northing[US ft]	Latitude	Longitude
Slot Location	164.11	2942.22	3317675.69	1382031.01	40°22'35.292"N	104°21'35.064"W
Facility Reference Pt			3314735.93	1381829.44	40°22'33.672"N	104°22'13.080"W
Field Reference Pt			3327718.19	1377782.99	40°21'52.020"N	104°19'26.040"W

WELLPATH DATUM

Calculation method	Minimum curvature	CADE 26 (RKB) to Facility Vertical Datum	4678.00ft
Horizontal Reference Pt	Slot	CADE 26 (RKB) to Mean Sea Level	4678.00ft
Vertical Reference Pt	CADE 26 (RKB)	CADE 26 (RKB) to Mud Line at Slot (SLOT#04 STATE ANTELOPE P-T-30HNB (460'FNL & 840'FEL, SEC.30))	4678.00ft
MD Reference Pt	CADE 26 (RKB)	Section Origin	N 0.00, E 0.00 ft
Field Vertical Reference	Mean Sea Level	Section Azimuth	186.56°



Actual Wellpath Report

STATE ANTELOPE P-T-30HNB AWP

Page 2 of 7



REFERENCE WELLPATH IDENTIFICATION

Operator	BONANZA CREEK OIL COMPANY	Slot	SLOT#04 STATE ANTELOPE P-T-30HNB (460'FNL & 840'FEL, SEC.30)
Area	COLORADO	Well	STATE ANTELOPE P-T-30HNB
Field	WELD COUNTY	Wellbore	STATE ANTELOPE P-T-30HNB AWB
Facility	SEC.30-T5N-R62W		

WELLPATH DATA (118 stations)

MD [ft]	Inclination [°]	Azimuth [°]	TVD [ft]	Vert Sect [ft]	North [ft]	East [ft]	Latitude	Longitude	DLS [°/100ft]	Comments
0.00	0.000	270.210	0.00	0.00	0.00	0.00	40°22'35.292"N	104°21'35.064"W	0.00	
17.00	0.000	270.210	17.00	0.00	0.00	0.00	40°22'35.292"N	104°21'35.064"W	0.00	Tie on Point
404.00	0.830	270.210	403.99	0.31	0.01	-2.80	40°22'35.292"N	104°21'35.100"W	0.21	First BHI Survey
625.00	0.990	262.180	624.96	0.96	-0.24	-6.30	40°22'35.290"N	104°21'35.145"W	0.09	
816.00	0.580	148.870	815.95	2.14	-1.30	-7.43	40°22'35.279"N	104°21'35.160"W	0.70	
911.00	1.270	280.570	910.94	2.44	-1.51	-8.22	40°22'35.277"N	104°21'35.170"W	1.80	
1006.00	2.560	285.450	1005.89	2.04	-0.76	-11.30	40°22'35.285"N	104°21'35.210"W	1.37	
1101.00	2.590	287.080	1100.79	1.32	0.44	-15.39	40°22'35.296"N	104°21'35.263"W	0.08	
1196.00	3.780	294.450	1195.64	-0.03	2.37	-20.30	40°22'35.315"N	104°21'35.326"W	1.32	
1291.00	4.730	293.940	1290.38	-2.16	5.25	-26.73	40°22'35.344"N	104°21'35.409"W	1.00	
1386.00	6.400	301.100	1384.93	-5.53	9.58	-34.84	40°22'35.387"N	104°21'35.514"W	1.90	
1481.00	8.140	306.530	1479.16	-11.09	16.32	-44.78	40°22'35.453"N	104°21'35.643"W	1.97	
1576.00	9.340	307.150	1573.06	-18.38	24.97	-56.33	40°22'35.539"N	104°21'35.792"W	1.27	
1671.00	9.900	314.560	1666.73	-27.33	35.36	-68.29	40°22'35.641"N	104°21'35.946"W	1.43	
1766.00	10.190	319.490	1760.27	-38.08	47.48	-79.57	40°22'35.761"N	104°21'36.092"W	0.95	
1861.00	9.290	316.520	1853.90	-48.73	59.43	-90.31	40°22'35.879"N	104°21'36.231"W	1.08	
1957.00	8.420	319.760	1948.76	-58.51	70.42	-100.18	40°22'35.988"N	104°21'36.358"W	1.04	
2052.00	9.620	321.950	2042.58	-68.93	81.98	-109.56	40°22'36.102"N	104°21'36.480"W	1.31	
2146.00	10.810	316.240	2135.09	-80.15	94.53	-120.50	40°22'36.226"N	104°21'36.621"W	1.66	
2241.00	9.320	317.820	2228.63	-90.91	106.67	-131.83	40°22'36.346"N	104°21'36.767"W	1.59	
2336.00	8.440	317.170	2322.49	-100.52	117.48	-141.74	40°22'36.453"N	104°21'36.895"W	0.93	
2430.00	8.710	312.750	2415.44	-109.21	127.37	-151.65	40°22'36.551"N	104°21'37.023"W	0.76	
2526.00	9.190	314.060	2510.27	-118.17	137.64	-162.50	40°22'36.652"N	104°21'37.164"W	0.54	
2622.00	10.010	315.070	2604.92	-128.03	148.88	-173.90	40°22'36.763"N	104°21'37.311"W	0.87	
2716.00	10.980	317.750	2697.35	-139.02	161.29	-185.69	40°22'36.886"N	104°21'37.463"W	1.15	
2811.00	11.060	316.180	2790.60	-150.78	174.56	-198.08	40°22'37.017"N	104°21'37.623"W	0.33	
2906.00	10.280	314.780	2883.96	-161.84	187.11	-210.41	40°22'37.141"N	104°21'37.783"W	0.87	
3005.00	10.590	318.830	2981.32	-173.42	200.18	-222.67	40°22'37.270"N	104°21'37.941"W	0.80	
3099.00	10.970	324.650	3073.66	-185.89	213.97	-233.53	40°22'37.406"N	104°21'38.081"W	1.23	
3193.00	9.270	322.070	3166.20	-197.95	227.24	-243.36	40°22'37.538"N	104°21'38.208"W	1.87	



Actual Wellpath Report

STATE ANTELOPE P-T-30HNB AWP

Page 3 of 7



REFERENCE WELLPATH IDENTIFICATION

Operator	BONANZA CREEK OIL COMPANY	Slot	SLOT#04 STATE ANTELOPE P-T-30HNB (460'FNL & 840'FEL, SEC.30)
Area	COLORADO	Well	STATE ANTELOPE P-T-30HNB
Field	WELD COUNTY	Wellbore	STATE ANTELOPE P-T-30HNB AWB
Facility	SEC.30-T5N-R62W		

WELLPATH DATA (118 stations)

MD [ft]	Inclination [°]	Azimuth [°]	TVD [ft]	Vert Sect [ft]	North [ft]	East [ft]	Latitude	Longitude	DLS [°/100ft]	Comments
3285.00	8.970	319.570	3257.03	-208.13	238.55	-252.56	40°22'37.649"N	104°21'38.327"W	0.54	
3376.00	9.380	319.960	3346.87	-218.06	249.62	-261.94	40°22'37.759"N	104°21'38.448"W	0.46	
3470.00	9.700	316.280	3439.57	-228.38	261.21	-272.34	40°22'37.873"N	104°21'38.583"W	0.73	
3562.00	10.660	314.630	3530.12	-238.58	272.79	-283.75	40°22'37.988"N	104°21'38.730"W	1.09	
3656.00	11.510	315.570	3622.37	-249.85	285.60	-296.50	40°22'38.114"N	104°21'38.895"W	0.92	
3748.00	11.750	315.420	3712.48	-261.50	298.82	-309.50	40°22'38.245"N	104°21'39.063"W	0.26	
3841.00	11.440	315.470	3803.58	-273.24	312.14	-322.62	40°22'38.376"N	104°21'39.233"W	0.33	
3935.00	10.740	316.520	3895.82	-284.72	325.14	-335.18	40°22'38.505"N	104°21'39.395"W	0.78	
4028.00	9.650	315.780	3987.35	-295.21	337.02	-346.58	40°22'38.622"N	104°21'39.542"W	1.18	
4121.00	9.310	316.370	4079.08	-304.96	348.05	-357.21	40°22'38.731"N	104°21'39.679"W	0.38	
4215.00	9.340	313.300	4171.84	-314.39	358.78	-368.00	40°22'38.837"N	104°21'39.819"W	0.53	
4308.00	8.690	313.310	4263.69	-323.11	368.78	-378.61	40°22'38.936"N	104°21'39.956"W	0.70	
4402.00	8.440	312.590	4356.65	-331.41	378.32	-388.85	40°22'39.030"N	104°21'40.088"W	0.29	
4495.00	7.680	311.990	4448.73	-339.03	387.09	-398.50	40°22'39.117"N	104°21'40.213"W	0.82	
4589.00	7.380	315.660	4541.92	-346.48	395.61	-407.39	40°22'39.201"N	104°21'40.328"W	0.60	
4684.00	7.440	322.540	4636.12	-354.75	404.86	-415.39	40°22'39.293"N	104°21'40.431"W	0.94	
4776.00	6.710	325.280	4727.42	-363.07	414.01	-422.08	40°22'39.383"N	104°21'40.518"W	0.87	
4871.00	5.960	334.810	4821.85	-371.44	423.03	-427.34	40°22'39.472"N	104°21'40.586"W	1.36	
4966.00	4.060	345.310	4916.48	-378.76	430.75	-430.29	40°22'39.548"N	104°21'40.624"W	2.21	
5061.00	2.860	4.370	5011.31	-384.27	436.37	-430.96	40°22'39.604"N	104°21'40.632"W	1.73	
5156.00	1.070	42.250	5106.25	-387.36	439.39	-430.18	40°22'39.634"N	104°21'40.622"W	2.23	
5252.00	0.630	232.450	5202.25	-387.72	439.73	-430.00	40°22'39.637"N	104°21'40.620"W	1.76	
5346.00	1.040	237.950	5296.24	-386.83	438.96	-431.13	40°22'39.630"N	104°21'40.635"W	0.44	
5442.00	1.120	242.530	5392.22	-385.76	438.06	-432.70	40°22'39.621"N	104°21'40.655"W	0.12	
5537.00	1.200	238.980	5487.20	-384.63	437.12	-434.38	40°22'39.611"N	104°21'40.677"W	0.11	
5657.00	0.890	218.300	5607.18	-383.07	435.74	-436.03	40°22'39.598"N	104°21'40.698"W	0.40	
5752.00	1.160	232.420	5702.17	-381.77	434.58	-437.25	40°22'39.586"N	104°21'40.714"W	0.39	
5847.00	1.200	240.980	5797.15	-380.53	433.51	-438.89	40°22'39.576"N	104°21'40.735"W	0.19	
5942.00	6.020	154.900	5891.96	-375.70	428.51	-437.64	40°22'39.526"N	104°21'40.719"W	6.38	
6037.00	19.400	179.170	5984.47	-355.71	408.12	-435.29	40°22'39.325"N	104°21'40.688"W	14.87	



Actual Wellpath Report

STATE ANTELOPE P-T-30HNB AWP

Page 4 of 7



REFERENCE WELLPATH IDENTIFICATION

Operator	BONANZA CREEK OIL COMPANY	Slot	SLOT#04 STATE ANTELOPE P-T-30HNB (460'FNL & 840'FEL, SEC.30)
Area	COLORADO	Well	STATE ANTELOPE P-T-30HNB
Field	WELD COUNTY	Wellbore	STATE ANTELOPE P-T-30HNB AWB
Facility	SEC.30-T5N-R62W		

WELLPATH DATA (118 stations)

MD [ft]	Inclination [°]	Azimuth [°]	TVD [ft]	Vert Sect [ft]	North [ft]	East [ft]	Latitude	Longitude	DLS [°/100ft]	Comments
6087.00	24.940	182.690	6030.76	-336.95	389.27	-435.66	40°22'39.139"N	104°21'40.693"W	11.39	
6132.00	29.400	180.200	6070.78	-316.49	368.74	-436.15	40°22'38.936"N	104°21'40.699"W	10.23	
6180.00	32.460	181.440	6111.95	-291.95	344.07	-436.51	40°22'38.692"N	104°21'40.704"W	6.51	
6227.00	36.910	183.220	6150.59	-265.28	317.36	-437.62	40°22'38.428"N	104°21'40.719"W	9.71	
6275.00	42.370	183.110	6187.54	-234.72	286.80	-439.31	40°22'38.126"N	104°21'40.740"W	11.38	
6322.00	45.790	180.900	6221.30	-202.14	254.13	-440.43	40°22'37.803"N	104°21'40.755"W	7.98	
6372.00	50.170	177.150	6254.77	-165.34	217.01	-439.76	40°22'37.436"N	104°21'40.746"W	10.38	
6417.00	55.410	176.150	6281.98	-130.06	181.25	-437.66	40°22'37.083"N	104°21'40.719"W	11.78	
6465.00	60.640	175.360	6307.39	-90.08	140.66	-434.64	40°22'36.682"N	104°21'40.680"W	10.98	
6512.00	66.890	177.330	6328.15	-48.61	98.61	-431.97	40°22'36.266"N	104°21'40.645"W	13.82	
6560.00	69.230	176.640	6346.09	-4.71	54.15	-429.62	40°22'35.827"N	104°21'40.615"W	5.05	
6607.00	69.780	177.210	6362.54	38.70	10.19	-427.26	40°22'35.393"N	104°21'40.585"W	1.63	
6656.00	75.840	177.800	6377.02	84.90	-36.56	-425.23	40°22'34.931"N	104°21'40.558"W	12.42	
6702.00	80.290	177.400	6386.53	129.35	-81.51	-423.35	40°22'34.486"N	104°21'40.534"W	9.71	
6748.00	87.620	178.740	6391.37	174.56	-127.20	-421.81	40°22'34.035"N	104°21'40.514"W	16.20	
6857.00	90.280	180.130	6393.37	282.69	-236.16	-420.74	40°22'32.958"N	104°21'40.500"W	2.75	
6952.00	90.950	180.570	6392.35	377.12	-331.15	-421.32	40°22'32.020"N	104°21'40.508"W	0.84	
7047.00	90.280	179.530	6391.33	471.50	-426.15	-421.40	40°22'31.081"N	104°21'40.509"W	1.30	
7142.00	90.000	180.870	6391.09	565.92	-521.14	-421.73	40°22'30.142"N	104°21'40.513"W	1.44	
7238.00	89.960	182.750	6391.13	661.58	-617.09	-424.76	40°22'29.194"N	104°21'40.552"W	1.96	
7333.00	88.930	183.050	6392.05	756.38	-711.96	-429.57	40°22'28.257"N	104°21'40.614"W	1.13	
7428.00	89.190	180.070	6393.61	851.00	-806.91	-432.15	40°22'27.318"N	104°21'40.648"W	3.15	
7523.00	89.220	181.750	6394.93	945.52	-901.88	-433.66	40°22'26.380"N	104°21'40.667"W	1.77	
7618.00	89.160	181.390	6396.27	1040.15	-996.84	-436.26	40°22'25.442"N	104°21'40.701"W	0.38	
7713.00	89.280	182.260	6397.56	1134.82	-1091.78	-439.29	40°22'24.503"N	104°21'40.740"W	0.92	
7807.00	89.260	181.240	6398.76	1228.48	-1185.73	-442.16	40°22'23.575"N	104°21'40.777"W	1.09	
7902.00	91.280	180.760	6398.31	1323.03	-1280.70	-443.82	40°22'22.636"N	104°21'40.798"W	2.19	
7997.00	91.540	181.210	6395.97	1417.55	-1375.66	-445.45	40°22'21.698"N	104°21'40.819"W	0.55	
8092.00	90.770	180.610	6394.06	1512.07	-1470.63	-446.96	40°22'20.760"N	104°21'40.839"W	1.03	
8187.00	90.370	179.660	6393.11	1606.46	-1565.62	-447.18	40°22'19.821"N	104°21'40.842"W	1.08	



Actual Wellpath Report

STATE ANTELOPE P-T-30HNB AWP

Page 5 of 7



REFERENCE WELLPATH IDENTIFICATION

Operator	BONANZA CREEK OIL COMPANY	Slot	SLOT#04 STATE ANTELOPE P-T-30HNB (460'FNL & 840'FEL, SEC.30)
Area	COLORADO	Well	STATE ANTELOPE P-T-30HNB
Field	WELD COUNTY	Wellbore	STATE ANTELOPE P-T-30HNB AWB
Facility	SEC.30-T5N-R62W		

WELLPATH DATA (118 stations)

MD [ft]	Inclination [°]	Azimuth [°]	TVD [ft]	Vert Sect [ft]	North [ft]	East [ft]	Latitude	Longitude	DLS [°/100ft]	Comments
8282.00	90.840	180.380	6392.11	1700.84	-1660.62	-447.22	40°22'18.882"N	104°21'40.842"W	0.91	
8378.00	89.560	178.980	6391.78	1796.14	-1756.61	-446.68	40°22'17.934"N	104°21'40.835"W	1.98	
8473.00	90.150	182.190	6392.02	1890.61	-1851.59	-447.65	40°22'16.995"N	104°21'40.848"W	3.44	
8568.00	90.240	179.930	6391.69	1985.17	-1946.57	-449.41	40°22'16.057"N	104°21'40.870"W	2.38	
8663.00	90.710	180.130	6390.91	2079.55	-2041.57	-449.46	40°22'15.118"N	104°21'40.871"W	0.54	
8758.00	89.350	180.050	6390.86	2173.94	-2136.56	-449.61	40°22'14.179"N	104°21'40.873"W	1.43	
8853.00	88.790	179.750	6392.40	2268.29	-2231.55	-449.44	40°22'13.240"N	104°21'40.871"W	0.67	
8948.00	88.060	179.860	6395.01	2362.59	-2326.51	-449.12	40°22'12.302"N	104°21'40.866"W	0.78	
9043.00	88.080	180.540	6398.21	2456.95	-2421.46	-449.45	40°22'11.364"N	104°21'40.871"W	0.72	
9138.00	89.190	181.110	6400.47	2551.45	-2516.42	-450.82	40°22'10.425"N	104°21'40.888"W	1.31	
9233.00	89.970	180.790	6401.17	2645.99	-2611.40	-452.39	40°22'09.487"N	104°21'40.909"W	0.89	
9328.00	89.390	182.050	6401.70	2740.60	-2706.37	-454.75	40°22'08.548"N	104°21'40.939"W	1.46	
9423.00	89.880	180.190	6402.30	2835.17	-2801.35	-456.60	40°22'07.610"N	104°21'40.963"W	2.02	
9519.00	90.860	180.800	6401.68	2930.63	-2897.34	-457.43	40°22'06.661"N	104°21'40.974"W	1.20	
9614.00	91.780	180.920	6399.50	3025.13	-2992.30	-458.86	40°22'05.723"N	104°21'40.992"W	0.98	
9709.00	91.080	178.680	6397.12	3119.44	-3087.26	-458.53	40°22'04.785"N	104°21'40.988"W	2.47	
9803.00	91.320	180.520	6395.16	3212.72	-3181.24	-457.87	40°22'03.856"N	104°21'40.979"W	1.97	
9930.00	90.640	181.950	6392.98	3339.15	-3308.19	-460.61	40°22'02.602"N	104°21'41.015"W	1.25	
10024.00	90.120	180.470	6392.36	3432.73	-3402.16	-462.59	40°22'01.673"N	104°21'41.040"W	1.67	
10119.00	89.650	180.580	6392.55	3527.21	-3497.15	-463.46	40°22'00.734"N	104°21'41.051"W	0.51	
10215.00	90.090	179.880	6392.77	3622.62	-3593.15	-463.85	40°21'59.786"N	104°21'41.056"W	0.86	
10310.00	90.240	181.200	6392.49	3717.09	-3688.15	-464.74	40°21'58.847"N	104°21'41.068"W	1.40	
10405.00	89.140	183.310	6393.01	3811.82	-3783.06	-468.48	40°21'57.909"N	104°21'41.116"W	2.50	
10500.00	89.010	182.570	6394.54	3906.61	-3877.93	-473.35	40°21'56.971"N	104°21'41.179"W	0.79	
10658.00	88.430	182.720	6398.07	4064.21	-4035.72	-480.64	40°21'55.412"N	104°21'41.273"W	0.38	
10752.00	88.240	182.460	6400.80	4157.94	-4129.58	-484.89	40°21'54.485"N	104°21'41.328"W	0.34	
10847.00	88.000	183.000	6403.92	4252.68	-4224.42	-489.41	40°21'53.548"N	104°21'41.387"W	0.62	Last BHI Survey
10904.00	88.000	183.000	6405.91	4309.53	-4281.31	-492.39	40°21'52.985"N	104°21'41.425"W	0.00	Projection to Bit



Actual Wellpath Report

STATE ANTELOPE P-T-30HNB AWP

Page 6 of 7



REFERENCE WELLPATH IDENTIFICATION

Operator	BONANZA CREEK OIL COMPANY	Slot	SLOT#04 STATE ANTELOPE P-T-30HNB (460'FNL & 840'FEL, SEC.30)
Area	COLORADO	Well	STATE ANTELOPE P-T-30HNB
Field	WELD COUNTY	Wellbore	STATE ANTELOPE P-T-30HNB AWB
Facility	SEC.30-T5N-R62W		

HOLE & CASING SECTIONS -

Ref Wellbore: STATE ANTELOPE P-T-30HNB AWB

Ref Wellpath: STATE ANTELOPE P-T-30HNB AWP

String/Diameter	Start MD [ft]	End MD [ft]	Interval [ft]	Start TVD [ft]	End TVD [ft]	Start N/S [ft]	Start E/W [ft]	End N/S [ft]	End E/W [ft]
9.625in Casing Surface	17.00	461.00	444.00	17.00	460.98	0.00	0.00	0.00	-3.65
8.75in Open Hole	461.00	6796.00	6335.00	460.98	6392.87	0.00	-3.65	-175.17	-421.01
7in Casing Intermediate	17.00	6788.00	6771.00	17.00	6392.69	0.00	0.00	-167.17	-421.11
6.125in Open Hole	6788.00	10904.00	4116.00	6392.69	6405.91	-167.17	-421.11	-4281.31	-492.39

TARGETS

Name	MD [ft]	TVD [ft]	North [ft]	East [ft]	Grid East [US ft]	Grid North [US ft]	Latitude	Longitude	Shape
STATE ANTELOPE K-O-30HNB SECTION 30		52.00	-163.76	-2942.24	3314735.93	1381829.44	40°22'33.672"N	104°22'13.080"W	polygon
STATE ANTELOPE P-T-30HNB BHL FROM PLAT (470'FSL & 1274'FEL, SEC.30)		6397.00	-4295.21	-482.09	3317248.88	1377730.14	40°21'52.848"N	104°21'41.292"W	point
STATE ANTELOPE K-O-30HNB Hardline (460' Setback)		6404.00	-163.76	-2942.24	3314735.93	1381829.44	40°22'33.672"N	104°22'13.080"W	polygon

WELLPATH COMPOSITION -

Ref Wellbore: STATE ANTELOPE P-T-30HNB AWB

Ref Wellpath: STATE ANTELOPE P-T-30HNB AWP

Start MD [ft]	End MD [ft]	Positional Uncertainty Model	Log Name/Comment	Wellbore
0.00	6748.00	NaviTrak (Standard)	BHI/Navitrak MWD 8.75" Hole <17'-6748'>	STATE ANTELOPE P-T-30HNB AWB
6748.00	10847.00	NaviTrak (MagCorr)	BHI/Navitrak MWD 6.125" Hole <6857'-10847'>	STATE ANTELOPE P-T-30HNB AWB
10847.00	10904.00	Blind Drilling (std)	Projection to bit	STATE ANTELOPE P-T-30HNB AWB



Actual Wellpath Report
STATE ANTELOPE P-T-30HNB AWP
Page 7 of 7



REFERENCE WELLPATH IDENTIFICATION			
Operator	BONANZA CREEK OIL COMPANY	Slot	SLOT#04 STATE ANTELOPE P-T-30HNB (460'FNL & 840'FEL, SEC.30)
Area	COLORADO	Well	STATE ANTELOPE P-T-30HNB
Field	WELD COUNTY	Wellbore	STATE ANTELOPE P-T-30HNB AWB
Facility	SEC.30-T5N-R62W		

WELLPATH COMMENTS				
MD [ft]	Inclination [°]	Azimuth [°]	TVD [ft]	Comment
17.00	0.000	270.210	17.00	Tie on Point
404.00	0.830	270.210	403.99	First BHI Survey
10847.00	88.000	183.000	6403.92	Last BHI Survey
10904.00	88.000	183.000	6405.91	Projection to Bit