

AXIA ENERGY
BULLDOG #13-31H-893 & #13-21H-893
LOCATED IN MOFFAT COUNTY, COLORADO
SECTION 13, T8N, R93W, 6th P.M.

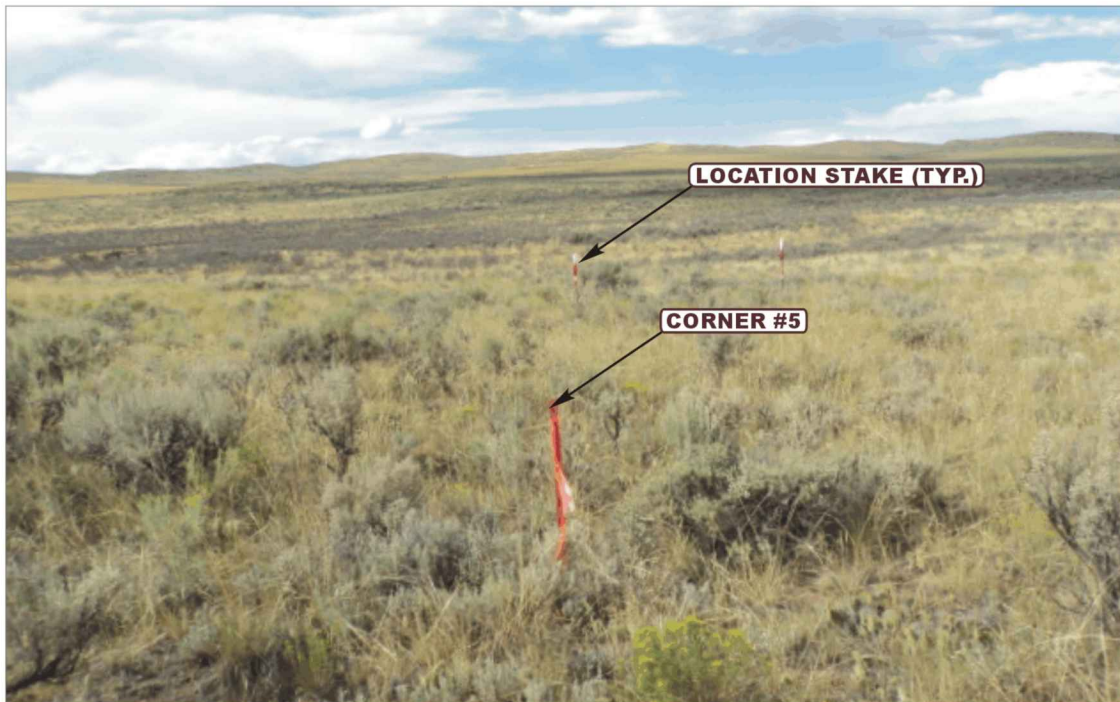


PHOTO: VIEW FROM CORNER #5 TO LOCATION STAKES

CAMERA ANGLE: NORTHERLY



PHOTO: VIEW FROM BEGINNING OF PROPOSED ACCESS

CAMERA ANGLE: NORTHERLY



- Since 1964 -

UELS Uintah Engineering & Land Surveying
85 South 200 East Vernal, Utah 84078
(435) 789-1017 * FAX (435) 789-1813

LOCATION PHOTOS

08 **23** **13**
MONTH DAY YEAR

TAKEN BY: G.M. DRAWN BY: M.M. REVISED: 00-00-00

PHOTO
P1

AXIA ENERGY
BULLDOG #13-31H-893 & #13-21H-893
LOCATED IN MOFFAT COUNTY, COLORADO
SECTION 13, T8N, R93W, 6th P.M.



PHOTO: VIEW OF LOCATION STAKE

CAMERA ANGLE: NORTHERLY



PHOTO: VIEW OF LOCATION STAKE

CAMERA ANGLE: EASTERLY



- Since 1964 -

U&LS Uintah Engineering & Land Surveying
85 South 200 East Vernal, Utah 84078
(435) 789-1017 * FAX (435) 789-1813

LOCATION PHOTOS

08 **23** **13**
MONTH DAY YEAR

TAKEN BY: G.M. DRAWN BY: M.M. REVISED: 00-00-00

PHOTO
P2

AXIA ENERGY
BULLDOG #13-31H-893 & #13-21H-893
LOCATED IN MOFFAT COUNTY, COLORADO
SECTION 13, T8N, R93W, 6th P.M.



PHOTO: VIEW OF LOCATION STAKE

CAMERA ANGLE: SOUTHERLY



PHOTO: VIEW OF LOCATION STAKE

CAMERA ANGLE: WESTERLY



- Since 1964 -



Uintah Engineering & Land Surveying
85 South 200 East Vernal, Utah 84078
(435) 789-1017 * FAX (435) 789-1813

LOCATION PHOTOS

08 **23** **13**
MONTH DAY YEAR

TAKEN BY: G.M. DRAWN BY: M.M. REVISED: 00-00-00

PHOTO
P3