



**RADIAL CEMENT BOND
GAMMA RAY
CCL**

Company KERR McGEE OIL AND GAS
Well REYNOLDS 8-23
Field WATTENBERG
County WELD State CO

Location: API # : 05-123-24350
SW NE
SEC 23 TWP 3N RGE 68W
Permanent Datum GL Elevation 4950
Log Measured From KB 12
Drilling Measured From KB
Other Services

Date	4-28-2014
Run Number	ONE
Depth Driller	7606
Depth Logger	1600
Bottom Logged Interval	1600
Top Log Interval	SURFACE
Open Hole Size	7.875
Type Fluid	WATER
Density / Viscosity	1.0
Max. Recorded Temp.	
Estimated Cement Top	
Time Well Ready	N/A
Time Logger on Bottom	N/A
Equipment Number	4310
Location	GREELEY
Recorded By	J.J.BULLARD
Witnessed By	L.WEBB

Borehole Record				Tubing Record			
Run Number	Bit	From	To	Size	Weight	From	To
ONE	12.25	0	722				
TWO	8.875	722	7606				
Casing Record	Size		Wgt/Ft	Top		Bottom	
Surface String	9.63		36#	0		722	
Prot. String							
Production String	4.5		11.6#	0		7408	
Liner							

<<< Fold Here >>>

All interpretations are opinions based on inferences from electrical or other measurements and we cannot and do not guarantee the accuracy or correctness of any interpretation, and we shall not, except in the case of gross or willful negligence on our part, be liable or responsible for any loss, costs, damages, or expenses incurred or sustained by anyone resulting from any interpretation made by any of our officers, agents or employees. These interpretations are also subject to our general terms and conditions set out in our current Price Schedule.

Comments

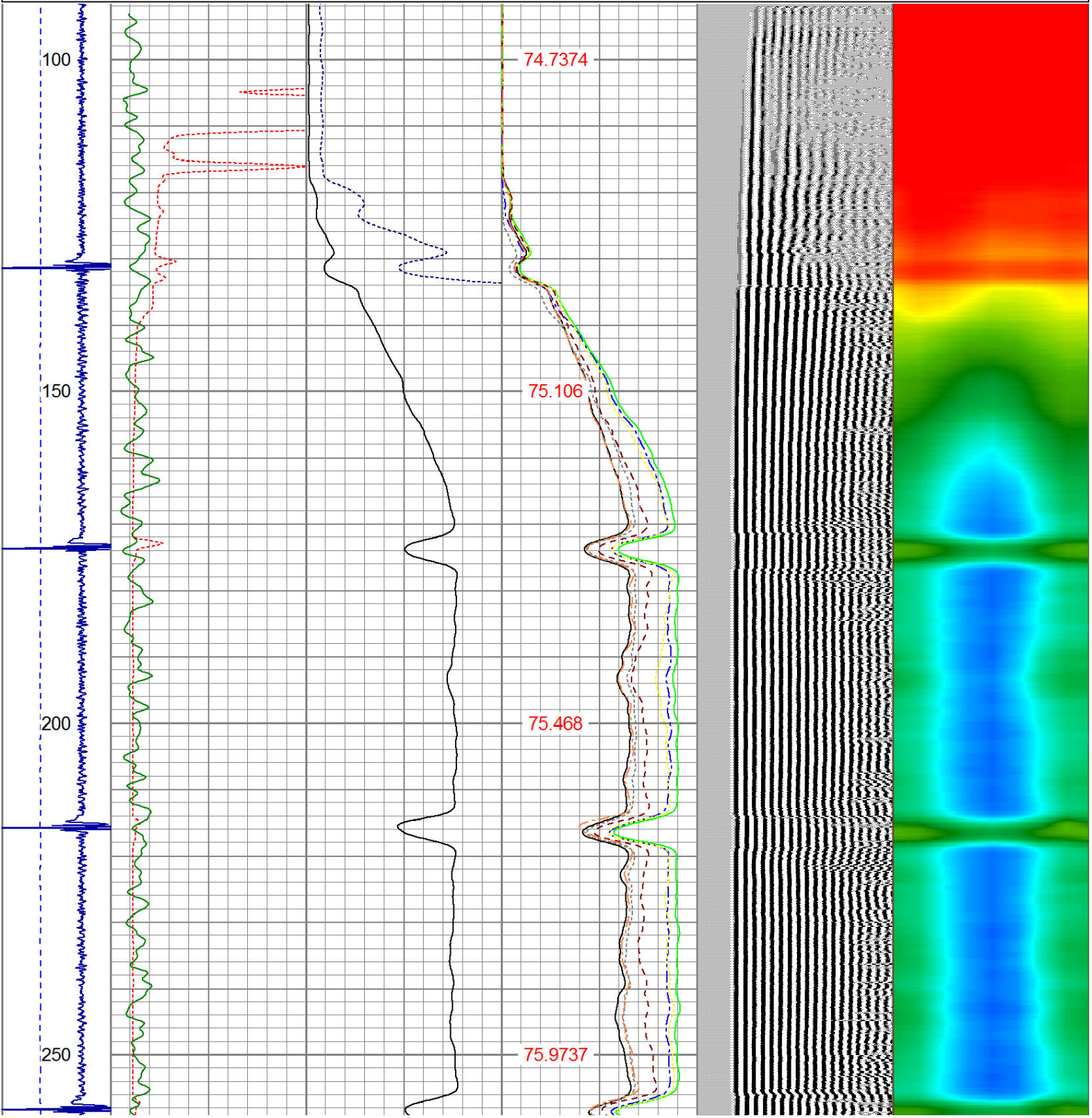
RAN CBL TO VERIFY CEMENT BOND

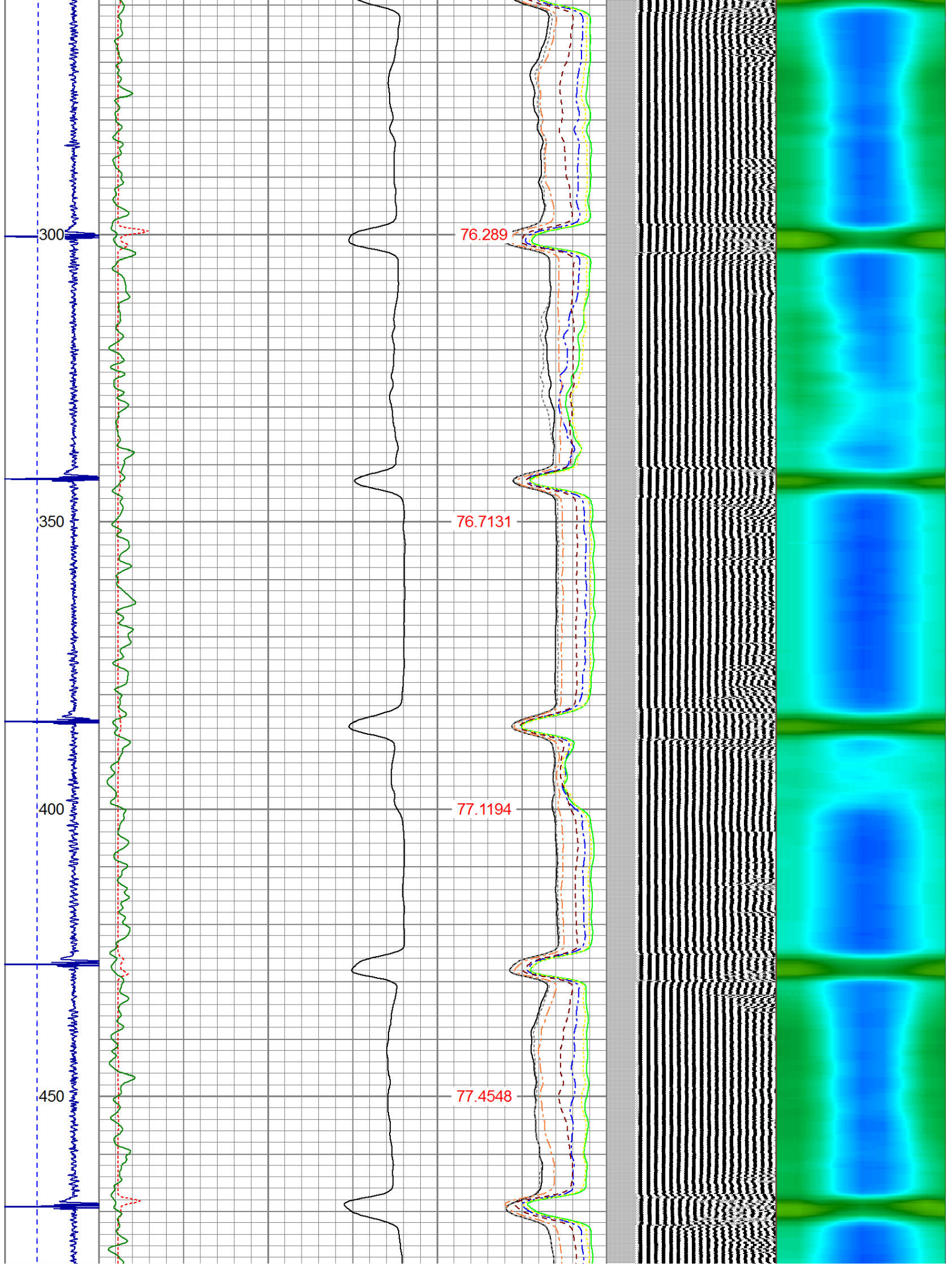
THANK YOU FOR USING WARRIOR !!!!!!!

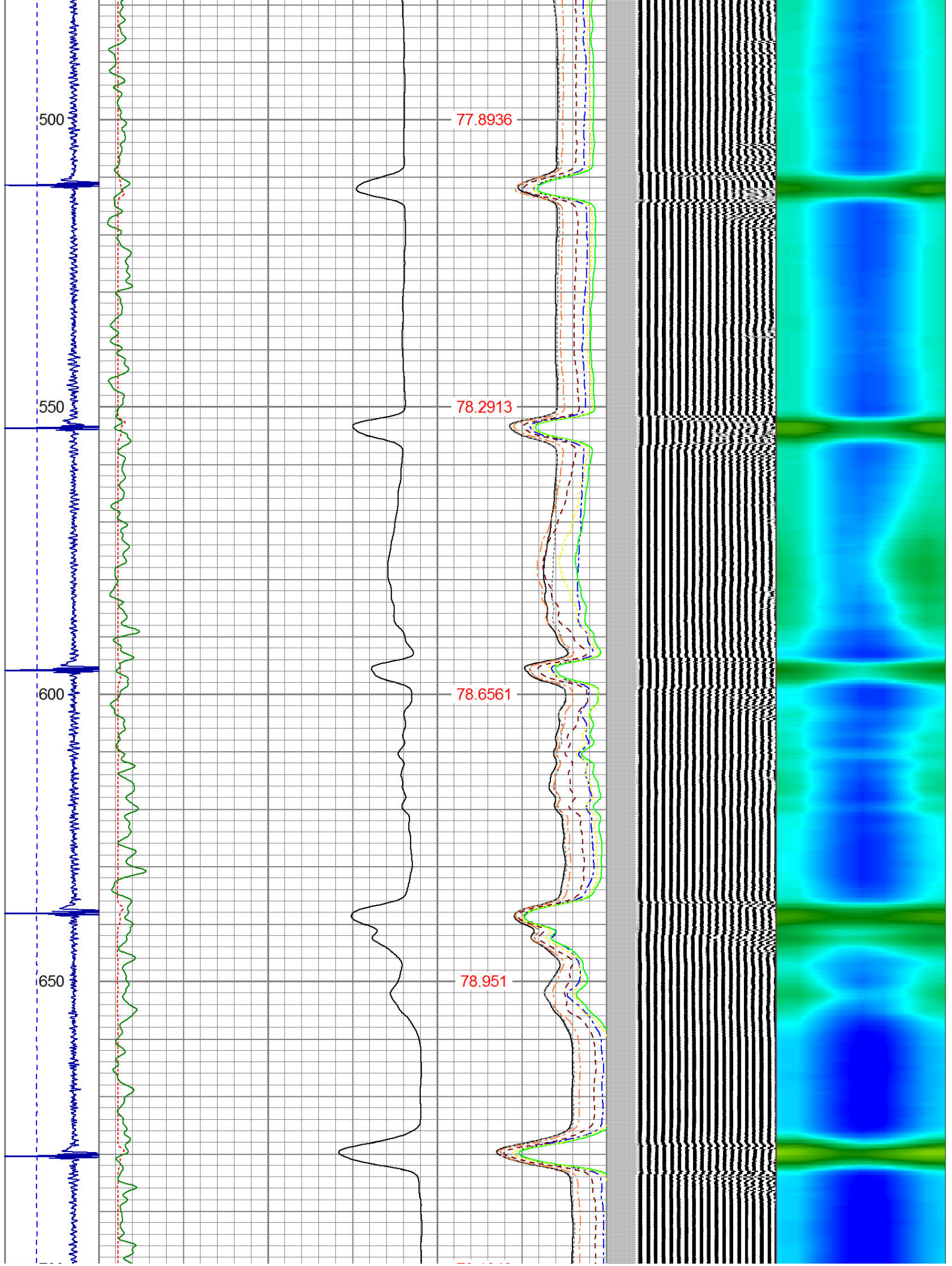
Sensor	Offset (ft)	Schematic	Description	Len (ft)	OD (in)	Wt (lb)

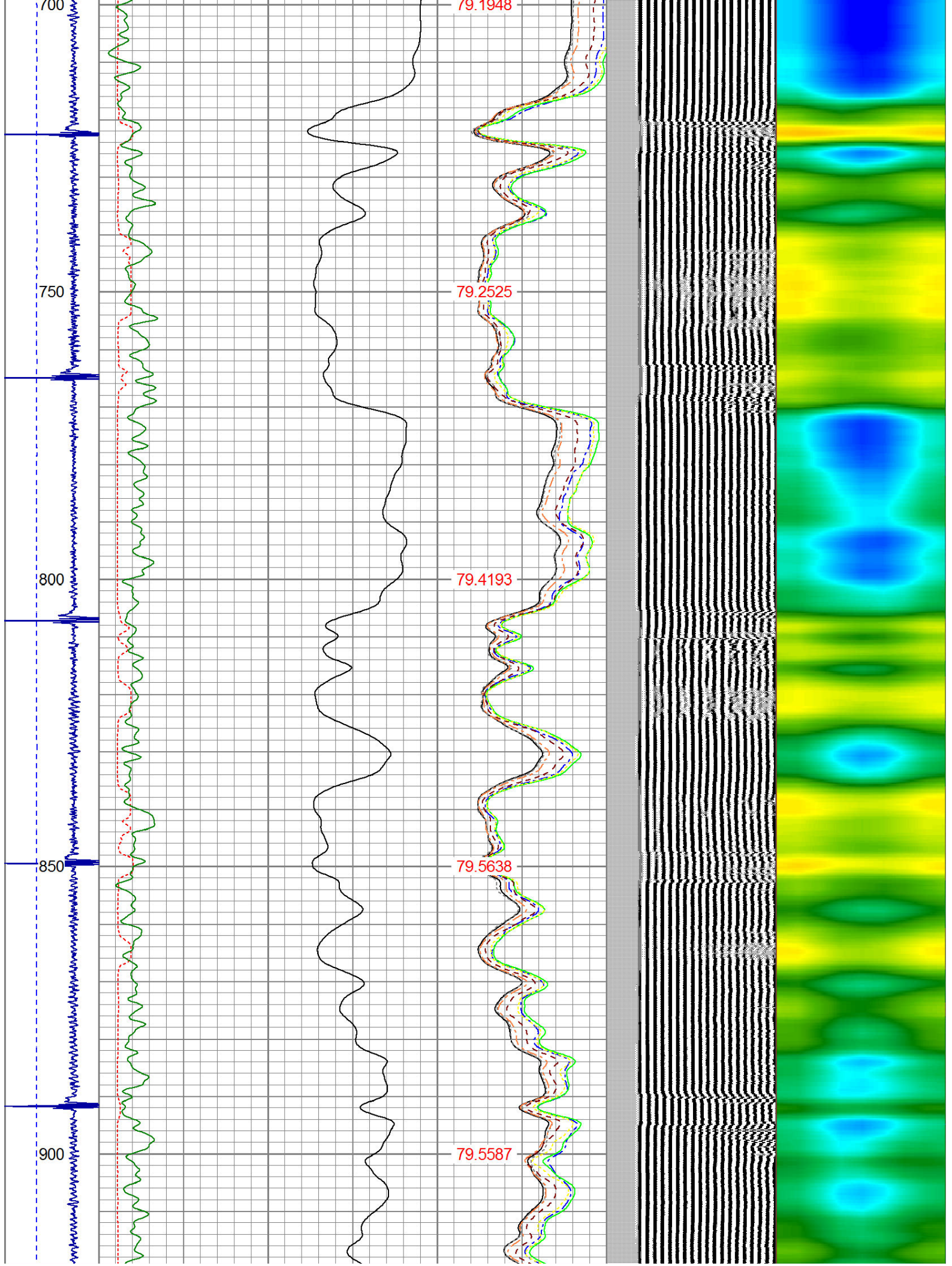
			PTS275	2.83	2.75	
HEADVOLT	16.13					
IntTemp	14.71					
WVF3FT	11.46		RBT-Probe (Base)	8.92	2.75	90.00
WVFCAL	11.46		Probe Radii Bond Tool with Digital Telemetry			
WVFS1	11.46					
WVFS2	11.46					
WVFS3	11.46					
WVFS4	11.46					
WVFS5	11.46					
WVFS6	11.46					
WVFS7	11.46					
WVFS8	11.46					
WVF5FT	10.46					
CNLSC	6.00		CNT-Probe_B (275)	2.88	2.75	40.00
CNSSC	5.17		6 bow centralizer			
CCL	3.64					
			GR-Probe (275)	4.33	2.75	30.00
			Probe 2.75"			
GR	0.90					
Dataset: reynolds 8-23.db: field/well/run1/pass2 Total Length: 18.96 ft Total Weight: 160.00 lb O.D. 2.75 in						

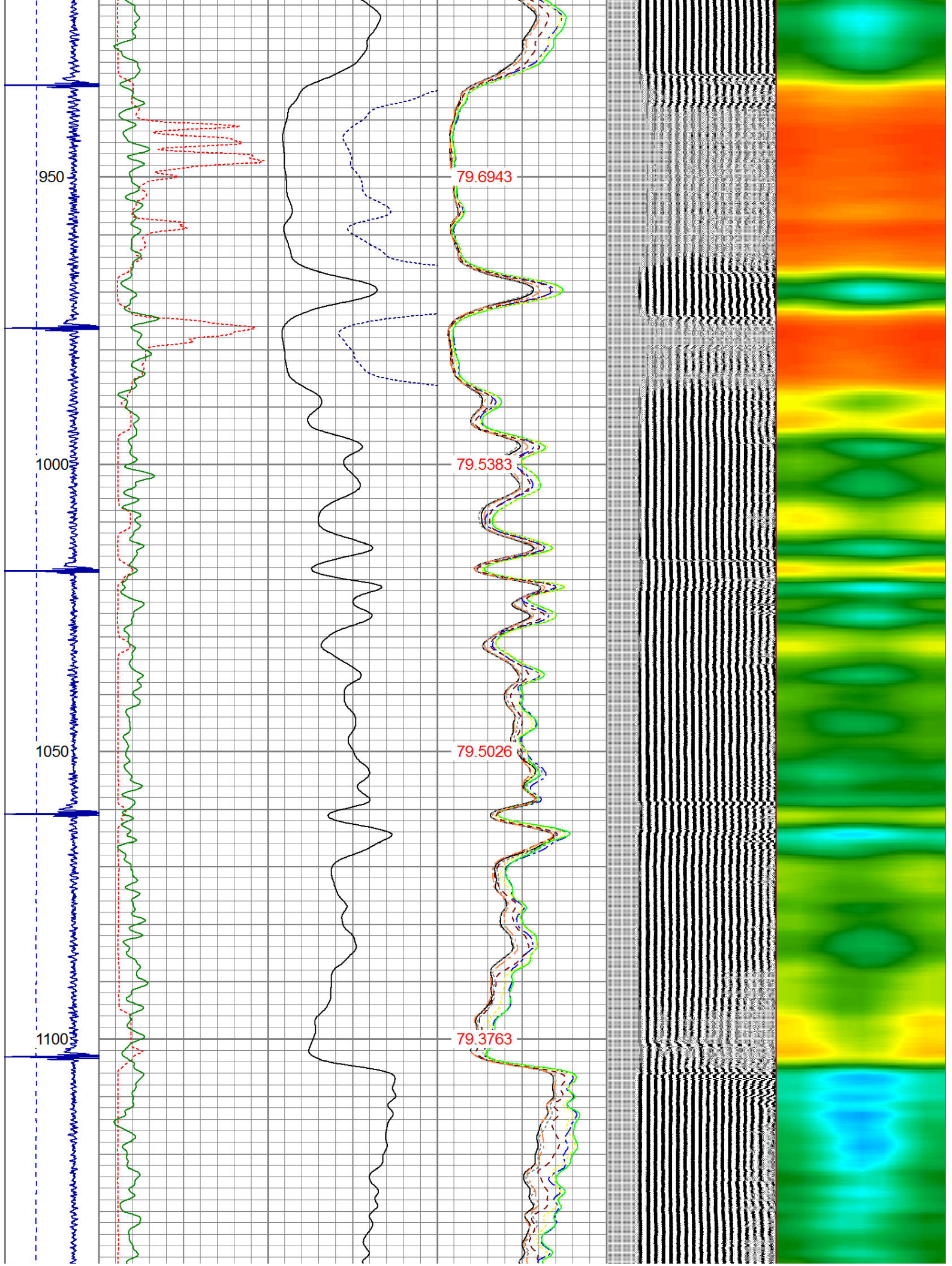
Dataset Creation:		Mon Apr 28 14:38:04 2014 by Log 7.0 B1														
Charted by:		Depth in Feet scaled 1:240														
-14 CCL	5	200	TT (usec)	800	0	AMP (mV)	100	0	AMPS1	100	200	VDL	1200	1	Cement Map	8
LSPD (ft/min)		0	GR (GAPI)	200	0	AMPx5 (mV)	20	0	AMPS2	100				1		100
		200	GR (GAPI)	400				0	AMPS4	100						
0	250							0	AMPS5	100						
								0	AMPS6	100						
								0	AMPS7	100						
								0	AMPS8	100						
								IntTemp								
								(degF)								

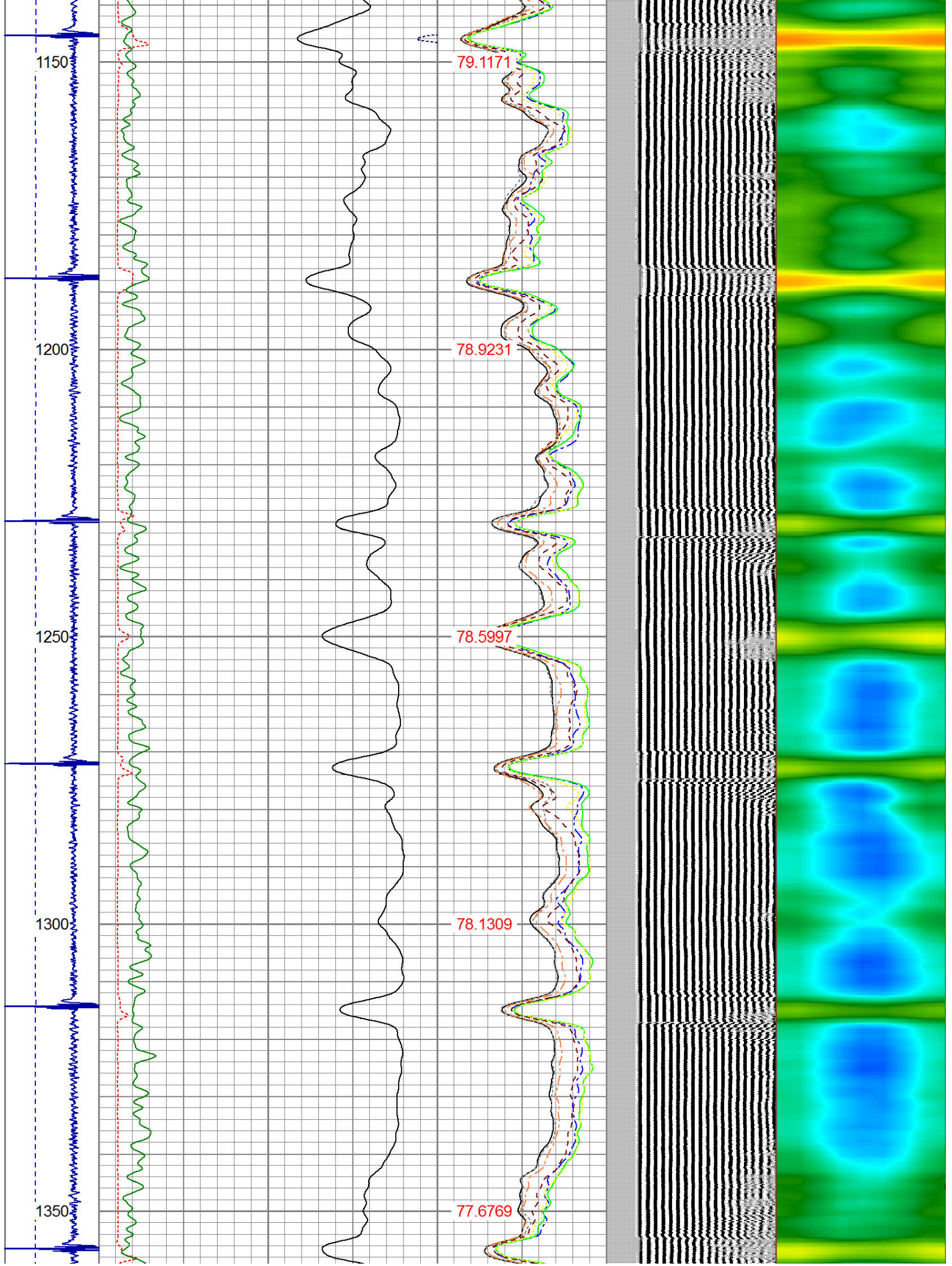


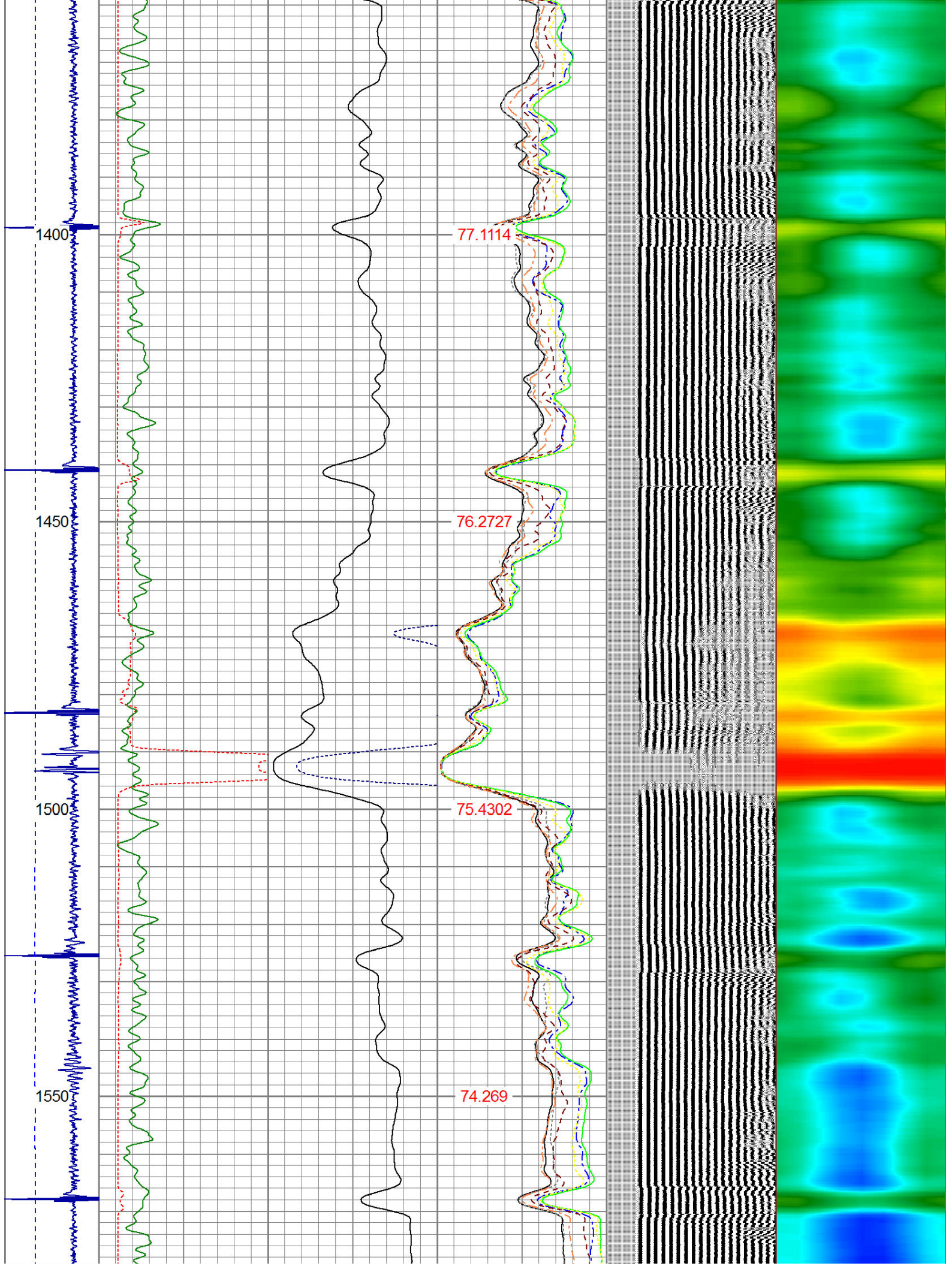


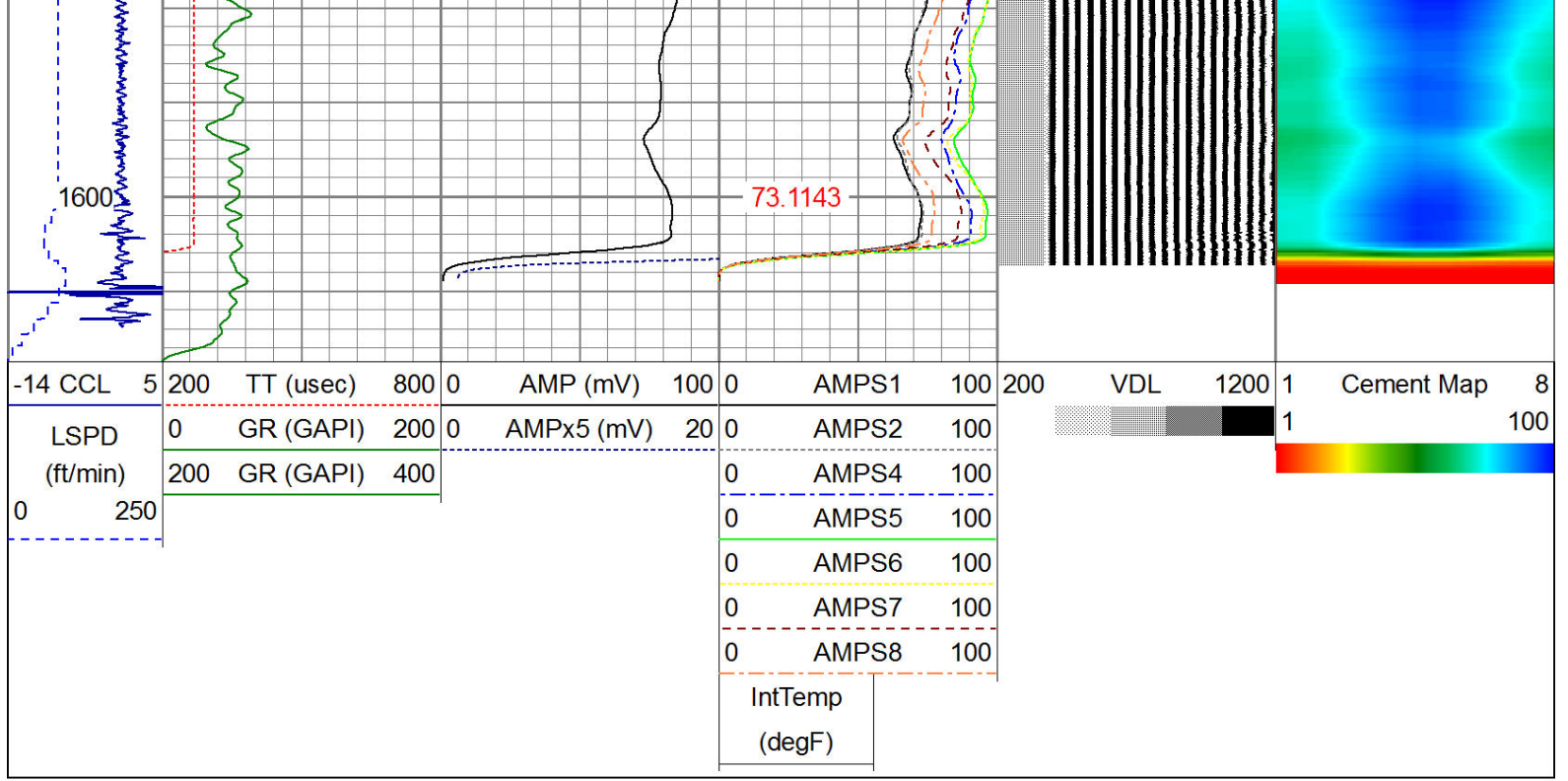












WARRIOR
ENERGY SERVICES

Company KERR McGEE OIL AND GAS
Well REYNOLDS 8-23
Field WATTENBERG
County WELD
State CO