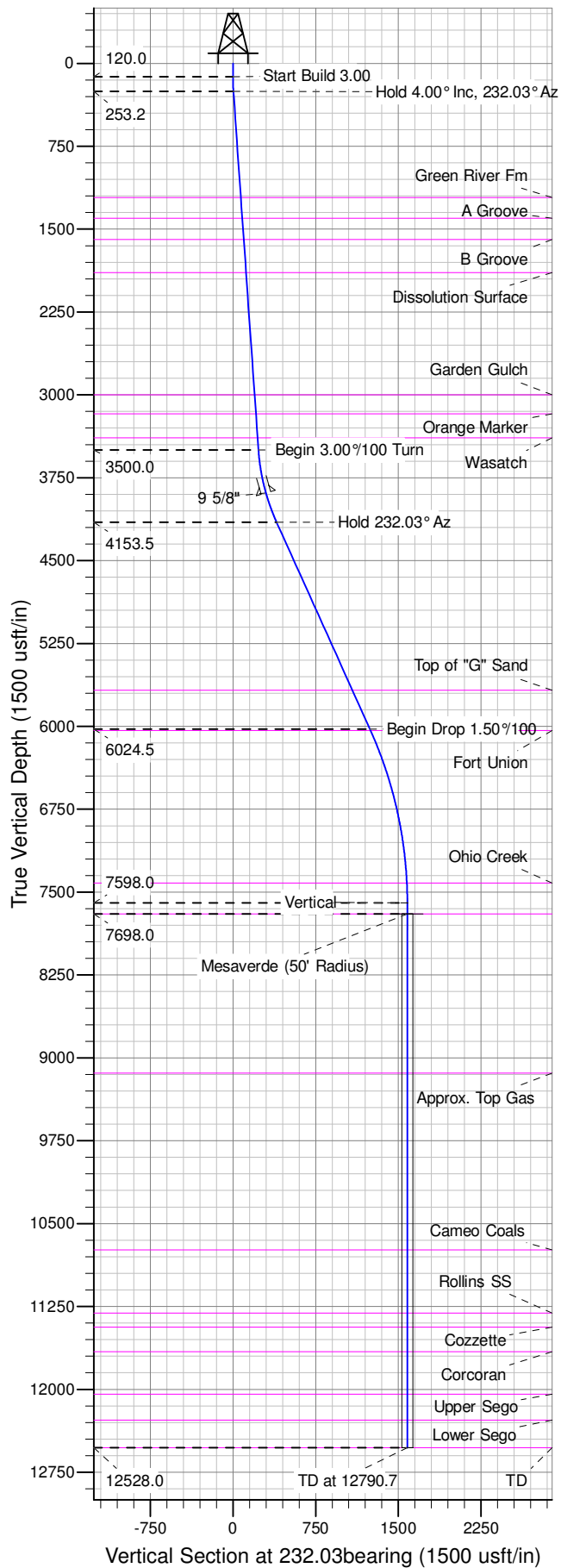
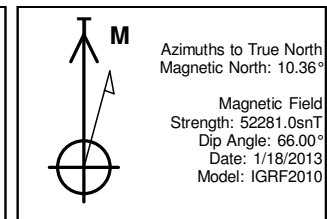
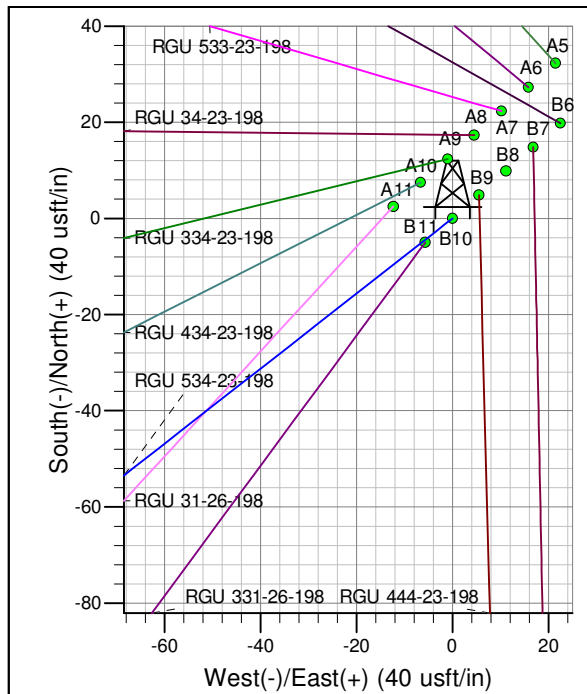
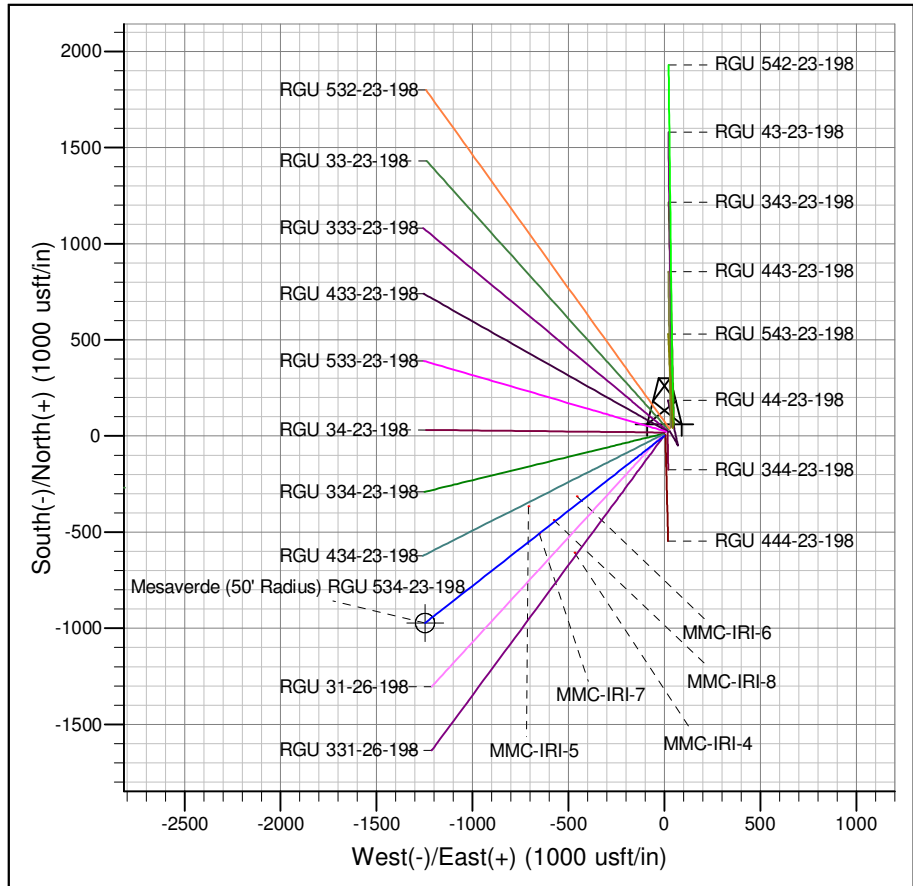




Well Name: RGU 534-23-198
Surface Location: RGU 43-23-198 Pad
North American Datum 1983 , US State Plane 1983 , Colorado Central Zone
Ground Elevation: 6567.0
+N/-S +E/-W Northing Easting Latitude Longitude Slot
0.0 0.0 1781545.40 2199945.60 39.94466 -108.35372 B10
KELLY BUSHING @ 6588.0usft (Original Well Elev)



ANNOTATIONS									
TVD	MD	Inc	Azi	+N/-S	+E/-W	V Sect	Departure	Annotation	
120.0	120.0	0.00	0.00	0.0	0.0	0.0	0.0	0.0	Start Build 3.00
253.2	253.3	4.00	232.03	-2.9	-3.7	4.7	4.7	4.7	Hold 4.00° Inc, 232.03° Az
3500.0	3508.0	4.00	232.03	-142.5	-182.6	231.7	231.7	231.7	Begin 3.00°/100 Turn
4153.5	4185.6	24.33	232.03	-244.0	-312.7	396.6	396.6	396.6	Hold 232.03° Az
6024.5	6238.8	24.33	232.03	-764.4	-979.5	1242.5	1242.5	1242.5	Begin Drop 1.50°/100
7598.0	7860.7	0.00	0.00	-973.1	-1246.9	1581.6	1581.6	1581.6	Vertical
7698.0	7960.7	0.00	0.00	-973.1	-1246.9	1581.6	1581.6	1581.6	Mesaverde
12528.0	12790.7	0.00	0.00	-973.1	-1246.9	1581.6	1581.6	1581.6	TD at 12790.7



Azimuths to True North
Magnetic North: 10.36°
Magnetic Field
Strength: 52281.0snT
Dip Angle: 66.00°
Date: 1/18/2013
Model: IGRF2010
Project: RG 23-01S-098W
Site: RGU 43-23-198 Pad
Well: RGU 534-23-198
Design #2 18Apr14 mab