

**ANADARKO PETROLEUM CORP - EBUS
DO NOT MAIL - PO BOX 4995
THE WOODLANDS, Texas**

Howard 29N-28HZ

MAJORS 29

Post Job Summary

Cement Surface Casing

Prepared for:
Date Prepared: 8/18/2013
Version: 1

Service Supervisor: OTERI, VAUGHN

Submitted by: FINNEY, SEAN

HALLIBURTON

HALLIBURTON

Wellbore Geometry

Job Tubulars					MD		Shoe Joint Length ft
Type	Description	Size in	ID in	Wt lbm/ft	Top ft	Bottom ft	
Casing	9 5/8" Surface Casing	9.63	8.921	36.00	0.00	1,020.00	42.00
Open Hole Section	13 1/2" Open Hole Section		13.500		0.00	1,020.00	0.00

HALLIBURTON

Pumping Schedule

Stage /Plug #	Fluid #	Fluid Type	Fluid Name	Surface Density lbm/gal	Avg Rate bbl/min	Surface Volume	Downhole Volume
1	1	Spacer	Fresh Water Spacer	8.33	4.00	10.0 bbl	10.0 bbl
1	2	Spacer	MUD FLUSH III	8.40	4.00	12.0 bbl	12.0 bbl
1	3	Spacer	WATER SPACER	8.33	4.00	10.0 bbl	10.0 bbl
1	4	Cement Slurry	SwiftCem B2	14.20	5.00	384.0 sacks	384.0 sacks

Fluids Pumped

Stage/Plug # 1 Fluid 1: Fresh Water Spacer
DUMMY MUD / FLUSH / SPACER SBC MATERIAL

Fluid Density: 8.33 lbm/gal
Fluid Volume: 10.00 bbl
Pump Rate: 4.00 bbl/min

Stage/Plug # 1 Fluid 2: MUD FLUSH III
MUD FLUSH III - SBM (528788)

Fluid Density: 8.40 lbm/gal
Fluid Volume: 12.00 bbl
Pump Rate: 4.00 bbl/min

Stage/Plug # 1 Fluid 3: WATER SPACER
DUMMY MUD / FLUSH / SPACER SBC MATERIAL

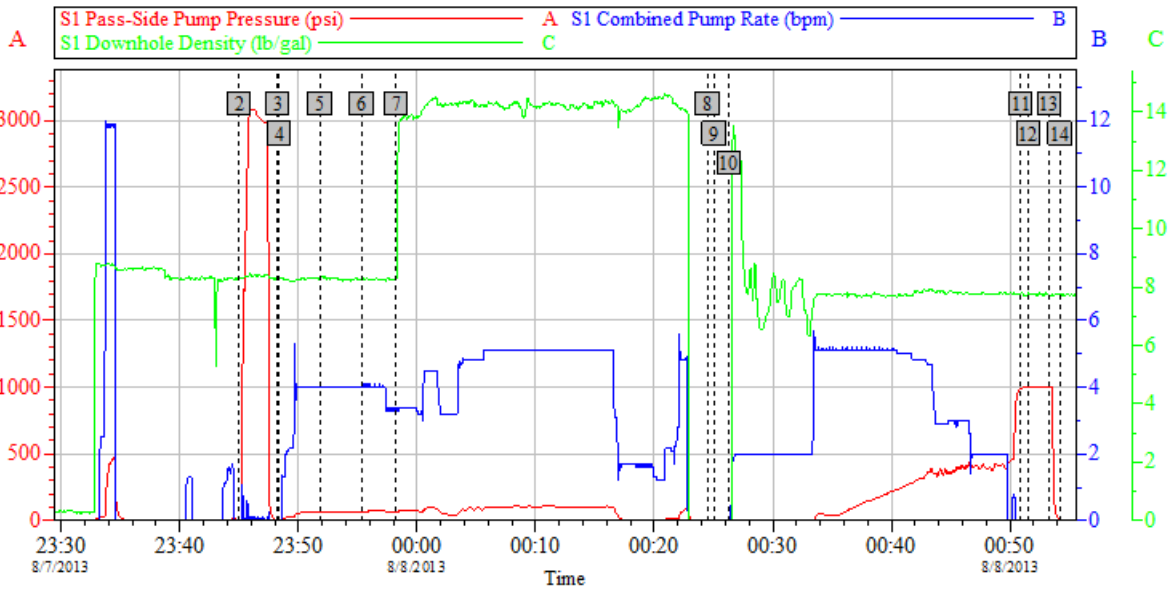
Fluid Density: 8.33 lbm/gal
Pump Rate: 4.00 bbl/min

Stage/Plug # 1 Fluid 4: SwiftCem B2
SWIFTCEM (TM) SYSTEM

Fluid Weight: 14.20 lbm/gal
Slurry Yield: 1.53 ft³/sack
Total Mixing Fluid: 7.63 Gal
Surface Volume: 384.0 sacks
Sacks: 384.0 sacks
Calculated Fill: 900.00 ft
Calculated Top of Fluid: 0.00 ft

HALLIBURTON

Data Acquisition



2	Start Job	8/7/2013 23:45:01	3	Test Lines	8/7/2013 23:48:15	4	Pump Spacer 1	8/7/2013 23:48:24
5	Pump Spacer 1	8/7/2013 23:51:50	6	Pump Spacer 1	8/7/2013 23:55:23	7	Pump Cement	8/7/2013 23:58:15
8	Shutdown	8/8/2013 00:24:32	9	Drop Plug	8/8/2013 00:25:06	10	Pump Displacement	8/8/2013 00:26:19
11	Bump Plug	8/8/2013 00:50:55	12	End Job	8/8/2013 00:51:34	13	Other	8/8/2013 00:53:20
14	End Job	8/8/2013 00:54:15						

Customer:	Job Date: 07-Aug-2013	Sales Order #: 900652051
Well Description:	UWI:	

OptiCem v6.4.10
06-Sep-13 10:30

HALLIBURTON

Service Supervisor Reports

Job Log

Date/Time	Chart #	Activity Code	Pump Rate	Cum Vol	Pump	Pressure (psig)	Comments
08/07/2013 00:24		Shutdown					
08/07/2013 00:25		Drop Plug					DROP PLUG WITNESSED BY COMPANY REP
08/07/2013 00:26		Pump Displacement	5	75.1		200.0	PUMP FRESH WATER TO DISPLACE
08/07/2013 00:50		Bump Plug	2			385.0	BUMPED CALCLATED PRESURE TO LAND295.70
08/07/2013 00:53		Check Floats				875.0	FLOATS HELD 1 BBL BACK TO THE TRUCK
08/07/2013 01:01		End Job					
08/07/2013 23:45		Start Job					PRELOADED PLUG WITNESSED BY DRILLER
08/07/2013 23:48		Test Lines				4071.0	PRESSURE TESTED LINES WITH FRESH WATER
08/07/2013 23:48		Pump Spacer 1	4	10		61.0	PUMPED FRESH WATER SPACER
08/07/2013 23:51		Pump Spacer 2	4	12		53.0	MIXED MUD FLUSH WITH FRESH WATER
08/07/2013 23:55		Pump Spacer 1	4	10		68.0	PUMPED FRESH WATER SPACER
08/07/2013 23:58		Pump Cement	5	105		100.0	MIXED105BBLs OF 14.2PPG SWIFTCEM WITH FRESH WATER

The Road to Excellence Starts with Safety

Sold To #: 300466	Ship To #: 3013485	Quote #:	Sales Order #: 900652051
Customer: ANADARKO PETROLEUM CORP - EBUS		Customer Rep: Seacrest, Alan	
Well Name: Howard		Well #: 29N-28HZ	API/UWI #: 05-123-37680
Field: WATTERBERG	City (SAP): DACONO	County/Parish: Weld	State: Colorado
Lat: N 40.016 deg. OR N 40 deg. 0 min. 56.25 secs.		Long: W 104.9 deg. OR W -105 deg. 5 min. 58.718 secs.	
Contractor: MAJORS		Rig/Platform Name/Num: MAJORS 29	
Job Purpose: Cement Surface Casing			
Well Type: Development Well		Job Type: Cement Surface Casing	
Sales Person: PLIENESS, RYAN		Srvc Supervisor: OTERI, VAUGHN	MBU ID Emp #: 443828

Job Personnel

HES Emp Name	Exp Hrs	Emp #	HES Emp Name	Exp Hrs	Emp #	HES Emp Name	Exp Hrs	Emp #
BANUELOS, GUADALUPE	0.0	372277	OTERI, VAUGHN Steeves	0.0	443828	Trier, Derek	0.0	546461
VIATOR, JASON R.	0.0	550394						

Equipment

HES Unit #	Distance-1 way	HES Unit #	Distance-1 way	HES Unit #	Distance-1 way	HES Unit #	Distance-1 way
11398319	10 mile	11542778	10 mile	11562546C	10 mile		

Job Hours

Date	On Location Hours	Operating Hours	Date	On Location Hours	Operating Hours	Date	On Location Hours	Operating Hours
TOTAL			<i>Total is the sum of each column separately</i>					

Job

Job Times

Formation Name	Formation Depth (MD)	Top	Bottom	Form Type	Job depth MD	Water Depth	Perforation Depth (MD)	From	To	Called Out	On Location	Job Started	Job Completed	Departed Loc	Date	Time	Time Zone
				BHST	1020. ft					07 - Aug - 2013	07 - Aug - 2013	07 - Aug - 2013	08 - Aug - 2013	08 - Aug - 2013		18:20	MST
																21:30	MST
																23:45	MST
																01:01	MST
																01:45	MST

Well Data

Description	New / Used	Max pressure psig	Size in	ID in	Weight lbf/ft	Thread	Grade	Top MD ft	Bottom MD ft	Top TVD ft	Bottom TVD ft
13 1/2" Open Hole Section				13.5				.	1020.		
9 5/8" Surface Casing	Unknown		9.625	8.921	36.		J-55	.	1020.		

Sales/Rental/3rd Party (HES)

Description	Qty	Qty uom	Depth	Supplier
CMT CASING EQUIPMENT BOM	1	JOB		

Fluid Data									
Stage/Plug #: 1									
Fluid #	Stage Type	Fluid Name	Qty	Qty uom	Mixing Density lbm/gal	Yield ft ³ /sk	Mix Fluid Gal/sk	Rate bbl/min	Total Mix Fluid Gal/sk
1	Fresh Water Spacer		10.00	bbl	8.33	.0	.0	4.0	
2	MUD FLUSH III	MUD FLUSH III - SBM (528788)	12.00	bbl	8.4	.0	.0	4.0	
3	WATER SPACER		10.00	bbl	8.33	.0	.0	4.0	
4	SwiftCem B2	SWIFTCEM (TM) SYSTEM (452990)	384.0	sacks	14.2	1.53	7.63	5.0	7.63
7.63 Gal		FRESH WATER							
Calculated Values			Pressures			Volumes			
Displacement		Shut In: Instant		Lost Returns		Cement Slurry		Pad	
Top Of Cement		5 Min		Cement Returns		Actual Displacement		Treatment	
Frac Gradient		15 Min		Spacers		Load and Breakdown		Total Job	
Rates									
Circulating		Mixing		Displacement		Avg. Job			
Cement Left In Pipe		Amount	42 ft	Reason	Shoe Joint				
Frac Ring # 1 @	ID	Frac ring # 2 @	ID	Frac Ring # 3 @	ID	Frac Ring # 4 @	ID		
The Information Stated Herein Is Correct				Customer Representative Signature					

