

BONANZA CREEK OIL COMPANY

Location: COLORADO Slot: SLOT#02 PRONGHORN 11-41-28HNB (1411'FNL & 369'FWL,SEC.28)
Field: WELD COUNTY Well: PRONGHORN 11-41-28HNB
Facility: SEC.28-T5N-R61W Wellbore: PRONGHORN 11-41-28HNB PWB

Plot reference wellpath is PRONGHORN 11-41-28HNB (REV-B.0) PWP

True vertical depths are referenced to CADE 22 (RKB)	Grid System: NAD83 / Lambert Colorado SP, Northern Zone (501), US feet
Measured depths are referenced to CADE 22 (RKB)	North Reference: True north
CADE 22 (RKB) to Mean Sea Level: 4633 feet	Scale: True distance
Mean Sea Level to Mud line (At Slot: SLOT#02 PRONGHORN 11-41-28HNB (1411'FNL & 369'FWL,SEC.28)): 0 feet	Depths are in feet
Coordinates are in feet referenced to Slot	Created by: guenaler on 5/12/2014



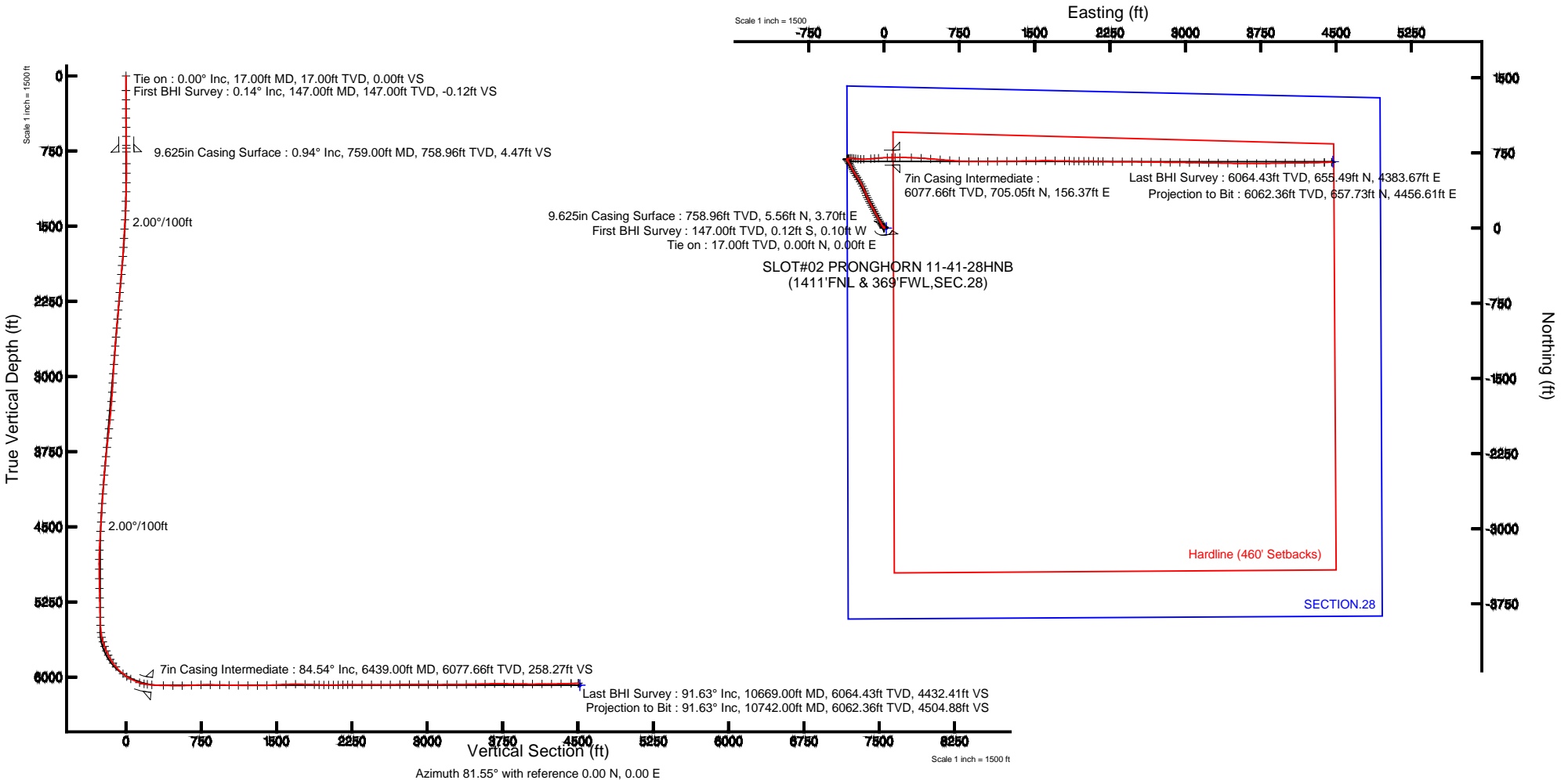
Location Information

Facility Name		Grid East (US ft)	Grid North (US ft)	Latitude	Longitude
SEC.28-T5N-R61W		3355962.408	1382119.916	40°22'31.008"N	104°13'19.962"W
Slot	Local N (ft)	Local E (ft)	Grid East (US ft)	Grid North (US ft)	Latitude
SLOT#02 PRONGHORN 11-41-28HNB (1411'FNL & 369'FWL,SEC.28)	0.00	-22.29	3355970.121	1382119.595	40°22'31.008"N
CADE 22 (RKB) to Mud line (At Slot: SLOT#02 PRONGHORN 11-41-28HNB (1411'FNL & 369'FWL,SEC.28))				4633ft	
Mean Sea Level to Mud line (At Slot: SLOT#02 PRONGHORN 11-41-28HNB (1411'FNL & 369'FWL,SEC.28))				0ft	
CADE 22 (RKB) to Mean Sea Level				4633ft	



BGGM (1945.0 to 2015.0) Dip: 67.00° Field: 52783.5 nT
Magnetic North is 8.22 degrees East of True North (at 5/12/2014)

To correct azimuth from Magnetic to True add 8.22 degrees





Actual Wellpath Report

PRONGHORN 11-41-28HNB AWP

Page 1 of 7



REFERENCE WELLPATH IDENTIFICATION

Operator	BONANZA CREEK OIL COMPANY	Slot	SLOT#02 PRONGHORN 11-41-28HNB (1411'FNL & 369'FWL,SEC.28)
Area	COLORADO	Well	PRONGHORN 11-41-28HNB
Field	WELD COUNTY	Wellbore	PRONGHORN 11-41-28HNB AWB
Facility	SEC.28-T5N-R61W		

REPORT SETUP INFORMATION

Projection System	NAD83 / Lambert Colorado SP, Northern Zone (501), US feet	Software System	WellArchitect® 4.0.0
North Reference	True	User	Guenaler
Scale	0.999959	Report Generated	5/12/2014 at 2:19:03 PM
Convergence at slot	n/a	Database/Source file	WA_Denver/PRONGHORN_11-41-28HNB_AWB.xml

WELLPATH LOCATION

	Local coordinates		Grid coordinates		Geographic coordinates	
	North[ft]	East[ft]	Easting[US ft]	Northing[US ft]	Latitude	Longitude
Slot Location	0.00	-22.29	3355970.12	1382119.60	40°22'31.008"N	104°13'20.280"W
Facility Reference Pt			3355992.41	1382119.92	40°22'31.008"N	104°13'19.992"W
Field Reference Pt			3327718.19	1377782.99	40°21'52.020"N	104°19'26.040"W

WELLPATH DATUM

Calculation method	Minimum curvature	CADE 22 (RKB) to Facility Vertical Datum	4633.00ft
Horizontal Reference Pt	Slot	CADE 22 (RKB) to Mean Sea Level	4633.00ft
Vertical Reference Pt	CADE 22 (RKB)	CADE 22 (RKB) to Mud Line at Slot (SLOT#02 PRONGHORN 11-41-28HNB (1411'FNL & 369'FWL,SEC.28))	4633.00ft
MD Reference Pt	CADE 22 (RKB)	Section Origin	N 0.00, E 0.00 ft
Field Vertical Reference	Mean Sea Level	Section Azimuth	81.60°



Actual Wellpath Report

PRONGHORN 11-41-28HNB AWP

Page 2 of 7



REFERENCE WELLPATH IDENTIFICATION

Operator	BONANZA CREEK OIL COMPANY	Slot	SLOT#02 PRONGHORN 11-41-28HNB (1411'FNL & 369'FWL,SEC.28)
Area	COLORADO	Well	PRONGHORN 11-41-28HNB
Field	WELD COUNTY	Wellbore	PRONGHORN 11-41-28HNB AWB
Facility	SEC.28-T5N-R61W		

WELLPATH DATA (125 stations)

MD [ft]	Inclination [°]	Azimuth [°]	TVD [ft]	Vert Sect [ft]	North [ft]	East [ft]	Latitude	Longitude	DLS [°/100ft]	Comments
0.00	0.000	219.310	0.00	0.00	0.00	0.00	40°22'31.008"N	104°13'20.280"W	0.00	
17.00	0.000	219.310	17.00	0.00	0.00	0.00	40°22'31.008"N	104°13'20.280"W	0.00	Tie on
147.00	0.140	219.310	147.00	-0.12	-0.12	-0.10	40°22'31.007"N	104°13'20.281"W	0.11	First BHI Survey
239.00	0.480	44.090	239.00	0.11	0.07	0.10	40°22'31.009"N	104°13'20.279"W	0.67	
330.00	0.630	33.440	329.99	0.74	0.76	0.64	40°22'31.015"N	104°13'20.272"W	0.20	
422.00	0.570	41.790	421.99	1.43	1.52	1.22	40°22'31.023"N	104°13'20.264"W	0.12	
513.00	0.780	38.240	512.98	2.23	2.35	1.91	40°22'31.031"N	104°13'20.255"W	0.24	
604.00	0.850	32.030	603.97	3.12	3.40	2.65	40°22'31.042"N	104°13'20.246"W	0.12	
695.00	0.860	19.790	694.96	3.88	4.62	3.24	40°22'31.054"N	104°13'20.238"W	0.20	
721.00	0.970	27.380	720.96	4.10	5.00	3.40	40°22'31.057"N	104°13'20.236"W	0.63	
877.00	0.840	29.800	876.94	5.58	7.16	4.58	40°22'31.079"N	104°13'20.221"W	0.09	
971.00	0.600	296.780	970.94	5.60	7.98	4.48	40°22'31.087"N	104°13'20.222"W	1.13	
1066.00	1.230	261.210	1065.92	4.17	8.05	3.03	40°22'31.088"N	104°13'20.241"W	0.86	
1156.00	1.160	253.330	1155.90	2.31	7.64	1.20	40°22'31.084"N	104°13'20.264"W	0.20	
1252.00	2.620	302.180	1251.86	-0.32	8.53	-1.58	40°22'31.092"N	104°13'20.300"W	2.14	
1347.00	4.320	316.140	1346.68	-4.05	12.27	-5.90	40°22'31.129"N	104°13'20.356"W	1.99	
1437.00	6.290	320.970	1436.29	-8.53	18.54	-11.36	40°22'31.191"N	104°13'20.427"W	2.24	
1532.00	7.910	326.180	1530.56	-13.99	28.02	-18.27	40°22'31.285"N	104°13'20.516"W	1.83	
1625.00	9.780	327.300	1622.45	-19.98	39.98	-26.10	40°22'31.403"N	104°13'20.617"W	2.02	
1716.00	10.860	337.990	1711.98	-25.18	54.44	-33.49	40°22'31.546"N	104°13'20.713"W	2.41	
1809.00	12.220	330.720	1803.11	-30.76	71.14	-41.59	40°22'31.711"N	104°13'20.817"W	2.14	
1901.00	13.530	330.080	1892.79	-38.18	88.97	-51.72	40°22'31.887"N	104°13'20.948"W	1.43	
1993.00	14.230	331.470	1982.10	-46.02	108.23	-62.49	40°22'32.077"N	104°13'21.087"W	0.84	
2086.00	13.960	331.020	2072.31	-53.90	128.08	-73.38	40°22'32.274"N	104°13'21.228"W	0.31	
2178.00	14.740	332.430	2161.43	-61.64	148.17	-84.18	40°22'32.472"N	104°13'21.368"W	0.93	
2270.00	14.770	333.010	2250.40	-69.23	168.99	-94.92	40°22'32.678"N	104°13'21.506"W	0.16	
2360.00	13.570	331.550	2337.66	-76.50	188.50	-105.15	40°22'32.871"N	104°13'21.639"W	1.39	
2453.00	13.740	329.770	2428.03	-84.35	207.63	-115.91	40°22'33.060"N	104°13'21.778"W	0.49	
2546.00	14.280	331.670	2518.27	-92.37	227.27	-126.91	40°22'33.254"N	104°13'21.920"W	0.76	
2638.00	13.570	331.530	2607.56	-99.95	246.75	-137.44	40°22'33.446"N	104°13'22.056"W	0.77	



Actual Wellpath Report

PRONGHORN 11-41-28HNB AWP

Page 3 of 7



REFERENCE WELLPATH IDENTIFICATION			
Operator	BONANZA CREEK OIL COMPANY	Slot	SLOT#02 PRONGHORN 11-41-28HNB (1411'FNL & 369'FWL,SEC.28)
Area	COLORADO	Well	PRONGHORN 11-41-28HNB
Field	WELD COUNTY	Wellbore	PRONGHORN 11-41-28HNB AWB
Facility	SEC.28-T5N-R61W		

WELLPATH DATA (125 stations)										
MD [ft]	Inclination [°]	Azimuth [°]	TVD [ft]	Vert Sect [ft]	North [ft]	East [ft]	Latitude	Longitude	DLS [°/100ft]	Comments
2729.00	12.760	335.330	2696.17	-106.43	265.27	-146.73	40°22'33.629"N	104°13'22.176"W	1.30	
2824.00	13.860	334.980	2788.62	-112.62	285.11	-155.92	40°22'33.825"N	104°13'22.295"W	1.16	
2918.00	13.530	333.360	2879.95	-119.29	305.14	-165.61	40°22'34.023"N	104°13'22.420"W	0.54	
3014.00	14.130	334.840	2973.16	-126.18	325.79	-175.63	40°22'34.227"N	104°13'22.549"W	0.73	
3109.00	13.830	342.630	3065.36	-131.30	347.12	-183.95	40°22'34.438"N	104°13'22.657"W	2.00	
3204.00	15.510	335.290	3157.26	-136.64	369.50	-192.65	40°22'34.659"N	104°13'22.769"W	2.63	
3300.00	15.740	335.590	3249.72	-143.84	393.02	-203.40	40°22'34.892"N	104°13'22.908"W	0.25	
3395.00	16.320	335.400	3341.02	-151.12	416.89	-214.28	40°22'35.128"N	104°13'23.049"W	0.61	
3490.00	16.370	331.570	3432.19	-159.43	440.80	-226.21	40°22'35.364"N	104°13'23.203"W	1.14	
3585.00	16.500	328.900	3523.31	-169.22	464.12	-239.55	40°22'35.594"N	104°13'23.375"W	0.81	
3681.00	15.010	328.460	3615.70	-179.37	486.39	-253.10	40°22'35.814"N	104°13'23.550"W	1.56	
3777.00	14.300	326.110	3708.57	-189.36	506.83	-266.21	40°22'36.016"N	104°13'23.720"W	0.96	
3871.00	13.740	324.540	3799.77	-199.43	525.56	-279.16	40°22'36.201"N	104°13'23.887"W	0.72	
3967.00	13.320	331.510	3893.12	-208.42	544.56	-291.05	40°22'36.389"N	104°13'24.041"W	1.75	
4063.00	12.980	329.060	3986.60	-216.36	563.53	-301.87	40°22'36.577"N	104°13'24.180"W	0.68	
4159.00	12.870	333.460	4080.17	-223.82	582.34	-312.19	40°22'36.763"N	104°13'24.314"W	1.03	
4253.00	12.350	332.780	4171.90	-230.32	600.65	-321.46	40°22'36.943"N	104°13'24.434"W	0.58	
4350.00	11.500	333.170	4266.81	-236.73	618.50	-330.57	40°22'37.120"N	104°13'24.551"W	0.88	
4446.00	10.040	331.850	4361.11	-242.58	634.42	-338.84	40°22'37.277"N	104°13'24.658"W	1.54	
4540.00	9.100	331.360	4453.80	-247.92	648.17	-346.27	40°22'37.413"N	104°13'24.754"W	1.00	
4634.00	9.270	329.200	4546.60	-253.38	661.20	-353.71	40°22'37.542"N	104°13'24.850"W	0.41	
4727.00	7.590	322.200	4638.59	-259.25	672.49	-361.31	40°22'37.653"N	104°13'24.948"W	2.11	
4822.00	5.710	320.960	4732.95	-264.74	681.11	-368.13	40°22'37.739"N	104°13'25.037"W	1.98	
4916.00	2.000	317.850	4826.72	-268.04	685.96	-372.18	40°22'37.786"N	104°13'25.089"W	3.95	
5012.00	1.170	85.680	4922.70	-267.99	687.28	-372.33	40°22'37.799"N	104°13'25.091"W	2.99	
5108.00	1.120	63.160	5018.68	-266.12	687.78	-370.51	40°22'37.804"N	104°13'25.067"W	0.47	
5204.00	1.530	70.390	5114.66	-263.98	688.63	-368.47	40°22'37.813"N	104°13'25.041"W	0.46	
5300.00	1.280	69.880	5210.63	-261.67	689.43	-366.25	40°22'37.821"N	104°13'25.012"W	0.26	
5396.00	1.500	47.180	5306.60	-259.58	690.65	-364.33	40°22'37.833"N	104°13'24.987"W	0.61	
5492.00	1.930	58.480	5402.56	-257.06	692.35	-362.03	40°22'37.850"N	104°13'24.958"W	0.57	



Actual Wellpath Report

PRONGHORN 11-41-28HNB AWP

Page 4 of 7



REFERENCE WELLPATH IDENTIFICATION			
Operator	BONANZA CREEK OIL COMPANY	Slot	SLOT#02 PRONGHORN 11-41-28HNB (1411'FNL & 369'FWL,SEC.28)
Area	COLORADO	Well	PRONGHORN 11-41-28HNB
Field	WELD COUNTY	Wellbore	PRONGHORN 11-41-28HNB AWB
Facility	SEC.28-T5N-R61W		

WELLPATH DATA (125 stations)

MD [ft]	Inclination [°]	Azimuth [°]	TVD [ft]	Vert Sect [ft]	North [ft]	East [ft]	Latitude	Longitude	DLS [°/100ft]	Comments
5572.00	1.740	83.950	5482.52	-254.61	693.18	-359.67	40°22'37.858"N	104°13'24.927"W	1.04	
5646.00	5.710	82.450	5556.35	-249.80	693.79	-354.90	40°22'37.864"N	104°13'24.866"W	5.37	
5694.00	13.110	80.700	5603.67	-241.96	694.98	-347.15	40°22'37.876"N	104°13'24.766"W	15.43	
5740.00	18.560	83.970	5647.91	-229.42	696.60	-334.71	40°22'37.892"N	104°13'24.605"W	12.00	
5788.00	20.030	90.940	5693.22	-213.67	697.26	-318.89	40°22'37.898"N	104°13'24.400"W	5.69	
5836.00	24.000	96.420	5737.71	-196.12	696.04	-300.97	40°22'37.886"N	104°13'24.169"W	9.30	
5884.00	25.800	101.950	5781.25	-176.88	692.78	-281.04	40°22'37.854"N	104°13'23.911"W	6.13	
5931.00	31.440	98.040	5822.50	-155.51	688.95	-258.88	40°22'37.816"N	104°13'23.625"W	12.64	
5979.00	37.000	91.480	5862.19	-129.25	686.82	-232.01	40°22'37.795"N	104°13'23.278"W	13.89	
6027.00	41.730	86.040	5899.30	-99.07	687.55	-201.61	40°22'37.802"N	104°13'22.885"W	12.19	
6123.00	49.440	86.840	5966.43	-30.79	691.77	-133.22	40°22'37.844"N	104°13'22.001"W	8.05	
6171.00	56.570	84.920	5995.30	7.41	694.56	-95.01	40°22'37.871"N	104°13'21.508"W	15.19	
6218.00	62.110	84.760	6019.26	47.76	698.19	-54.76	40°22'37.907"N	104°13'20.988"W	11.79	
6312.00	72.040	88.560	6055.84	133.86	703.12	31.54	40°22'37.956"N	104°13'19.872"W	11.20	
6360.00	79.740	89.830	6067.53	179.97	703.77	78.05	40°22'37.962"N	104°13'19.271"W	16.25	
6393.00	82.730	88.420	6072.56	212.30	704.27	110.66	40°22'37.967"N	104°13'18.850"W	10.00	
6555.00	89.110	92.590	6084.09	371.82	702.82	272.12	40°22'37.953"N	104°13'16.764"W	4.70	
6652.00	89.630	93.590	6085.15	466.87	697.59	368.97	40°22'37.901"N	104°13'15.512"W	1.16	
6747.00	90.090	94.080	6085.38	559.71	691.24	463.76	40°22'37.839"N	104°13'14.288"W	0.71	
6842.00	93.640	95.250	6082.29	652.19	683.52	558.38	40°22'37.762"N	104°13'13.065"W	3.93	
6938.00	91.730	94.470	6077.80	745.53	675.40	653.92	40°22'37.682"N	104°13'11.831"W	2.15	
7034.00	89.070	92.680	6077.13	839.42	669.41	749.72	40°22'37.623"N	104°13'10.593"W	3.34	
7129.00	88.950	91.260	6078.77	932.86	666.15	844.65	40°22'37.590"N	104°13'09.366"W	1.50	
7224.00	88.830	89.980	6080.61	1026.66	665.12	939.62	40°22'37.580"N	104°13'08.139"W	1.35	
7318.00	89.100	89.620	6082.31	1119.69	665.45	1033.61	40°22'37.584"N	104°13'06.925"W	0.48	
7413.00	88.740	88.960	6084.10	1213.82	666.62	1128.58	40°22'37.595"N	104°13'05.698"W	0.79	
7509.00	90.490	89.480	6084.74	1308.97	667.93	1224.57	40°22'37.608"N	104°13'04.457"W	1.90	
7605.00	92.410	89.480	6082.31	1404.03	668.80	1320.53	40°22'37.617"N	104°13'03.217"W	2.00	
7700.00	93.240	89.300	6077.63	1498.03	669.81	1415.41	40°22'37.626"N	104°13'01.992"W	0.89	
7796.00	91.970	88.850	6073.27	1593.12	671.36	1511.29	40°22'37.642"N	104°13'00.753"W	1.40	



Actual Wellpath Report

PRONGHORN 11-41-28HNB AWP

Page 5 of 7



REFERENCE WELLPATH IDENTIFICATION			
Operator	BONANZA CREEK OIL COMPANY	Slot	SLOT#02 PRONGHORN 11-41-28HNB (1411'FNL & 369'FWL,SEC.28)
Area	COLORADO	Well	PRONGHORN 11-41-28HNB
Field	WELD COUNTY	Wellbore	PRONGHORN 11-41-28HNB AWB
Facility	SEC.28-T5N-R61W		

WELLPATH DATA (125 stations)

MD [ft]	Inclination [°]	Azimuth [°]	TVD [ft]	Vert Sect [ft]	North [ft]	East [ft]	Latitude	Longitude	DLS [°/100ft]	Comments
7892.00	89.910	90.180	6071.69	1688.19	672.17	1607.27	40°22'37.650"N	104°12'59.512"W	2.55	
7987.00	88.770	90.500	6072.79	1782.08	671.61	1702.26	40°22'37.644"N	104°12'58.285"W	1.25	
8082.00	87.870	90.960	6075.57	1875.83	670.40	1797.21	40°22'37.632"N	104°12'57.058"W	1.06	
8130.00	87.660	91.400	6077.44	1923.13	669.41	1845.16	40°22'37.622"N	104°12'56.439"W	1.02	
8178.00	88.880	90.470	6078.89	1970.47	668.63	1893.13	40°22'37.614"N	104°12'55.819"W	3.20	
8226.00	89.910	89.880	6079.40	2017.93	668.48	1941.13	40°22'37.613"N	104°12'55.199"W	2.47	
8274.00	91.020	90.200	6079.01	2065.41	668.45	1989.13	40°22'37.613"N	104°12'54.579"W	2.41	
8322.00	91.290	90.900	6078.04	2112.81	667.99	2037.11	40°22'37.608"N	104°12'53.958"W	1.56	
8370.00	90.620	91.270	6077.24	2160.15	667.08	2085.10	40°22'37.599"N	104°12'53.338"W	1.59	
8418.00	90.620	91.140	6076.72	2207.48	666.07	2133.09	40°22'37.589"N	104°12'52.718"W	0.27	
8465.00	90.150	90.970	6076.41	2253.84	665.20	2180.08	40°22'37.580"N	104°12'52.111"W	1.06	
8561.00	89.480	90.430	6076.72	2348.63	664.03	2276.07	40°22'37.569"N	104°12'50.871"W	0.90	
8657.00	89.910	90.130	6077.23	2443.53	663.56	2372.06	40°22'37.564"N	104°12'49.631"W	0.55	
8753.00	90.710	90.760	6076.71	2538.39	662.81	2468.06	40°22'37.557"N	104°12'48.390"W	1.06	
8848.00	90.520	90.980	6075.69	2632.14	661.37	2563.04	40°22'37.542"N	104°12'47.163"W	0.31	
8944.00	90.370	91.260	6074.94	2726.82	659.50	2659.02	40°22'37.524"N	104°12'45.923"W	0.33	
9039.00	90.340	91.170	6074.35	2820.48	657.48	2754.00	40°22'37.504"N	104°12'44.696"W	0.10	
9134.00	89.780	90.560	6074.25	2914.24	656.05	2848.99	40°22'37.489"N	104°12'43.468"W	0.87	
9230.00	89.750	90.650	6074.65	3009.06	655.03	2944.98	40°22'37.479"N	104°12'42.228"W	0.10	
9326.00	89.840	90.590	6074.99	3103.87	654.00	3040.97	40°22'37.469"N	104°12'40.988"W	0.11	
9422.00	90.590	91.220	6074.63	3198.61	652.48	3136.96	40°22'37.454"N	104°12'39.747"W	1.02	
9517.00	90.650	90.810	6073.60	3292.32	650.80	3231.94	40°22'37.437"N	104°12'38.520"W	0.44	
9613.00	90.710	90.800	6072.46	3387.08	649.45	3327.92	40°22'37.423"N	104°12'37.280"W	0.06	
9709.00	91.510	91.270	6070.60	3481.77	647.71	3423.89	40°22'37.406"N	104°12'36.040"W	0.97	
9805.00	91.230	90.690	6068.31	3576.46	646.07	3519.85	40°22'37.390"N	104°12'34.800"W	0.67	
9900.00	90.490	90.250	6066.88	3670.31	645.29	3614.83	40°22'37.382"N	104°12'33.573"W	0.91	
9996.00	89.380	89.710	6066.99	3765.28	645.33	3710.83	40°22'37.382"N	104°12'32.332"W	1.29	
10091.00	89.160	89.240	6068.20	3859.38	646.20	3805.82	40°22'37.391"N	104°12'31.105"W	0.55	
10186.00	89.170	88.810	6069.59	3953.58	647.81	3900.79	40°22'37.406"N	104°12'29.878"W	0.45	
10280.00	90.220	89.330	6070.09	4046.78	649.34	3994.78	40°22'37.421"N	104°12'28.664"W	1.25	



Actual Wellpath Report

PRONGHORN 11-41-28HNB AWP

Page 6 of 7



REFERENCE WELLPATH IDENTIFICATION

Operator	BONANZA CREEK OIL COMPANY	Slot	SLOT#02 PRONGHORN 11-41-28HNB (1411'FNL & 369'FWL,SEC.28)
Area	COLORADO	Well	PRONGHORN 11-41-28HNB
Field	WELD COUNTY	Wellbore	PRONGHORN 11-41-28HNB AWB
Facility	SEC.28-T5N-R61W		

WELLPATH DATA (125 stations)

MD [ft]	Inclination [°]	Azimuth [°]	TVD [ft]	Vert Sect [ft]	North [ft]	East [ft]	Latitude	Longitude	DLS [°/100ft]	Comments
10376.00	90.860	89.540	6069.18	4141.88	650.29	4090.77	40°22'37.431"N	104°12'27.423"W	0.70	
10471.00	90.400	89.330	6068.14	4235.98	651.22	4185.76	40°22'37.440"N	104°12'26.196"W	0.53	
10567.00	91.110	88.760	6066.87	4331.17	652.82	4281.74	40°22'37.455"N	104°12'24.956"W	0.95	
10669.00	91.630	88.240	6064.43	4432.40	655.49	4383.67	40°22'37.482"N	104°12'23.639"W	0.72	Last BHI Survey
10742.00	91.630	88.240	6062.36	4504.88	657.73	4456.61	40°22'37.504"N	104°12'22.696"W	0.00	Projection to Bit

HOLE & CASING SECTIONS - Ref Wellbore: PRONGHORN 11-41-28HNB AWB Ref Wellpath: PRONGHORN 11-41-28HNB AWP

String/Diameter	Start MD [ft]	End MD [ft]	Interval [ft]	Start TVD [ft]	End TVD [ft]	Start N/S [ft]	Start E/W [ft]	End N/S [ft]	End E/W [ft]
9.625in Casing Surface	17.00	759.00	742.00	17.00	758.96	0.00	0.00	5.56	3.70
8.75in Open Hole	759.00	6218.00	5459.00	758.96	6019.26	5.56	3.70	698.19	-54.76
7in Casing Intermediate	17.00	6439.00	6422.00	17.00	6077.66	0.00	0.00	705.05	156.37
6.125in Open Hole	6439.00	10742.00	4303.00	6077.66	6062.36	705.05	156.37	657.73	4456.61

WELLPATH COMPOSITION - Ref Wellbore: PRONGHORN 11-41-28HNB AWB Ref Wellpath: PRONGHORN 11-41-28HNB AWP

Start MD [ft]	End MD [ft]	Positional Uncertainty Model	Log Name/Comment	Wellbore
0.00	6393.00	NaviTrak (Standard)	BHI/Navitrak MWD 8.75" Hole <17'-6393'>	PRONGHORN 11-41-28HNB AWB
6393.00	10669.00	NaviTrak (Standard)	BHI/Navitrak MWD 6.125" Hole <6555'-8753'>	PRONGHORN 11-41-28HNB AWB
10669.00	10742.00	Blind Drilling (std)	Projection to bit	PRONGHORN 11-41-28HNB AWB



Actual Wellpath Report
PRONGHORN 11-41-28HNB AWP
Page 7 of 7



REFERENCE WELLPATH IDENTIFICATION			
Operator	BONANZA CREEK OIL COMPANY	Slot	SLOT#02 PRONGHORN 11-41-28HNB (1411'FNL & 369'FWL,SEC.28)
Area	COLORADO	Well	PRONGHORN 11-41-28HNB
Field	WELD COUNTY	Wellbore	PRONGHORN 11-41-28HNB AWB
Facility	SEC.28-T5N-R61W		

WELLPATH COMMENTS				
MD [ft]	Inclination [°]	Azimuth [°]	TVD [ft]	Comment
17.00	0.000	219.310	17.00	Tie on
147.00	0.140	219.310	147.00	First BHI Survey
10669.00	91.630	88.240	6064.43	Last BHI Survey
10742.00	91.630	88.240	6062.36	Projection to Bit