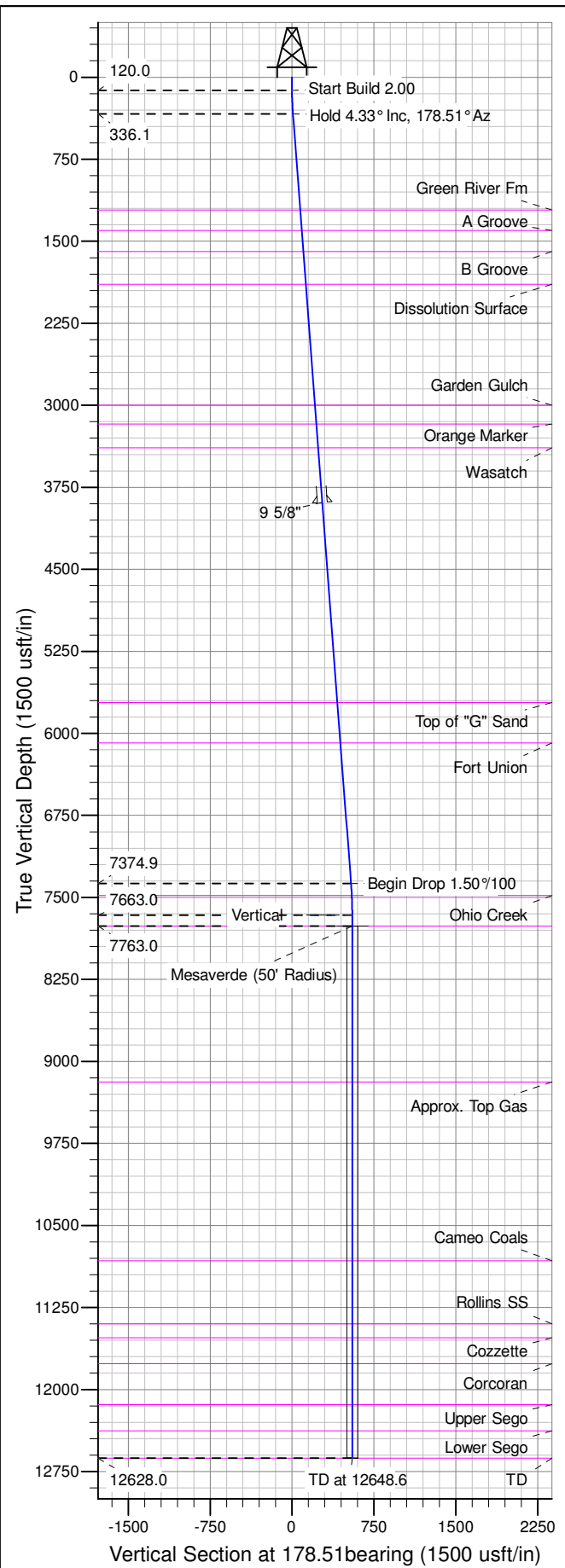


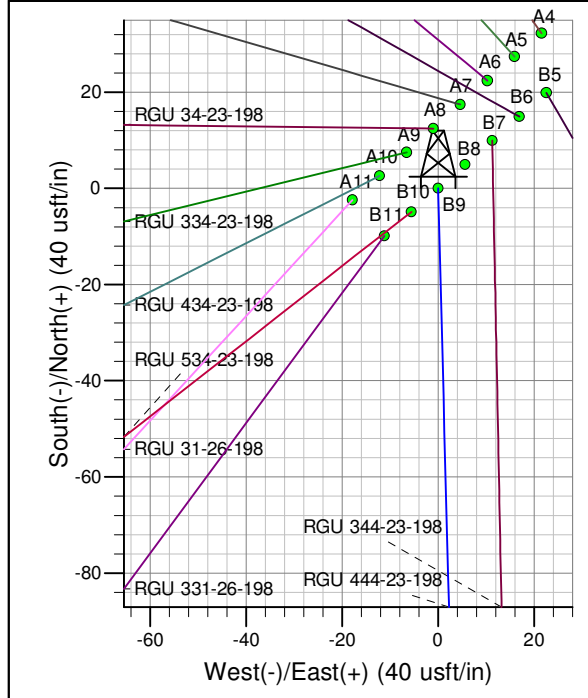
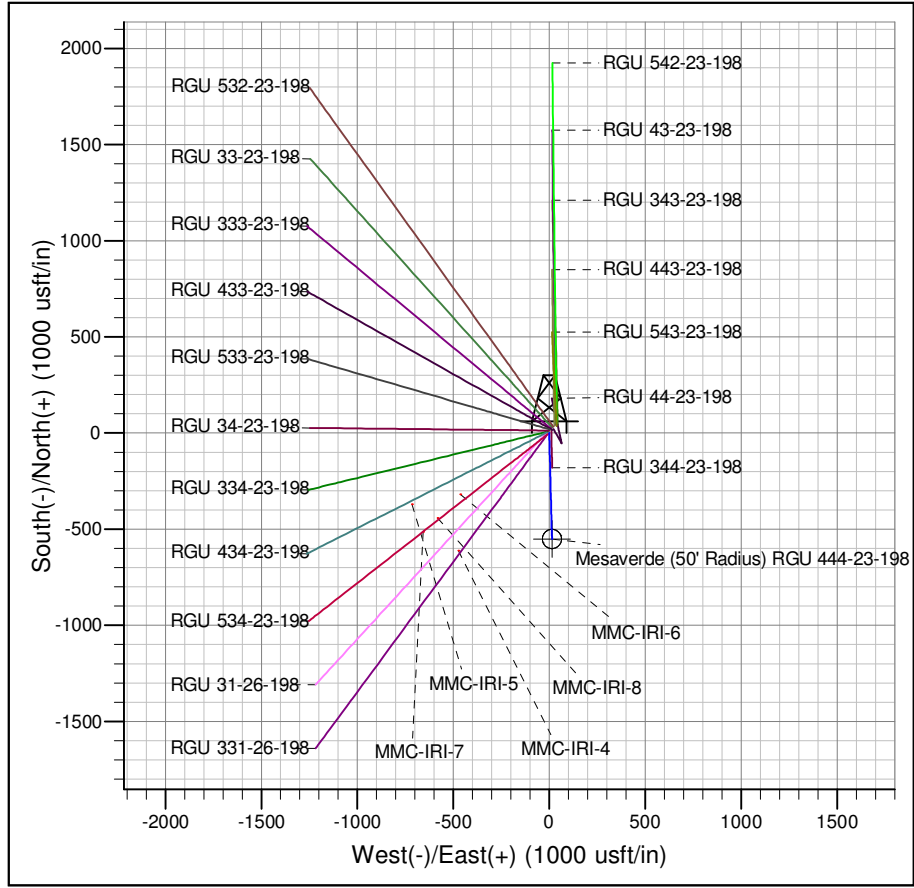


Well Name: RGU 444-23-198
 Surface Location: RGU 43-23-198 Pad
 North American Datum 1983 , US State Plane 1983 , Colorado Central Zone
 Ground Elevation: 6567.0
 +N/-S 0.0 +E/-W 0.0 Northing 1781550.1000 Easting 2199951.3000 Latitude 39.94467 Longitude -108.35370 Slot B9
 KELLY BUSHING @ 6588.0usft (Cyclone 29 (21' RKB) kjs)



ANNOTATIONS

TVD	MD	Inc	Azi	+N/-S	+E/-W	V Sect	Departure	Annotation
120.0	120.0	0.00	0.00	0.0	0.0	0.0	0.0	Start Build 2.00
336.1	336.3	4.33	178.51	-8.2	0.2	8.2	8.2	Hold 4.33° Inc, 178.51° Az
7374.9	7395.2	4.33	178.51	-540.5	14.0	540.6	540.6	Begin Drop 1.50°/100
7663.0	7683.6	0.00	0.00	-551.3	14.3	551.5	551.5	Vertical
7763.0	7783.6	0.00	0.00	-551.3	14.3	551.5	551.5	Mesaverde
12628.0	12648.6	0.00	0.00	-551.3	14.3	551.5	551.5	TD at 12648.6



Azimuths to True North
 Magnetic North: 10.44°
 Magnetic Field
 Strength: 52337.5snT
 Dip Angle: 66.01°
 Date: 6/27/2012
 Model: IGRF2010

Project: RG 23-01S-098W
 Site: RGU 43-23-198 Pad
 Well: RGU 444-23-198
 Design #3 18Apr14 mab