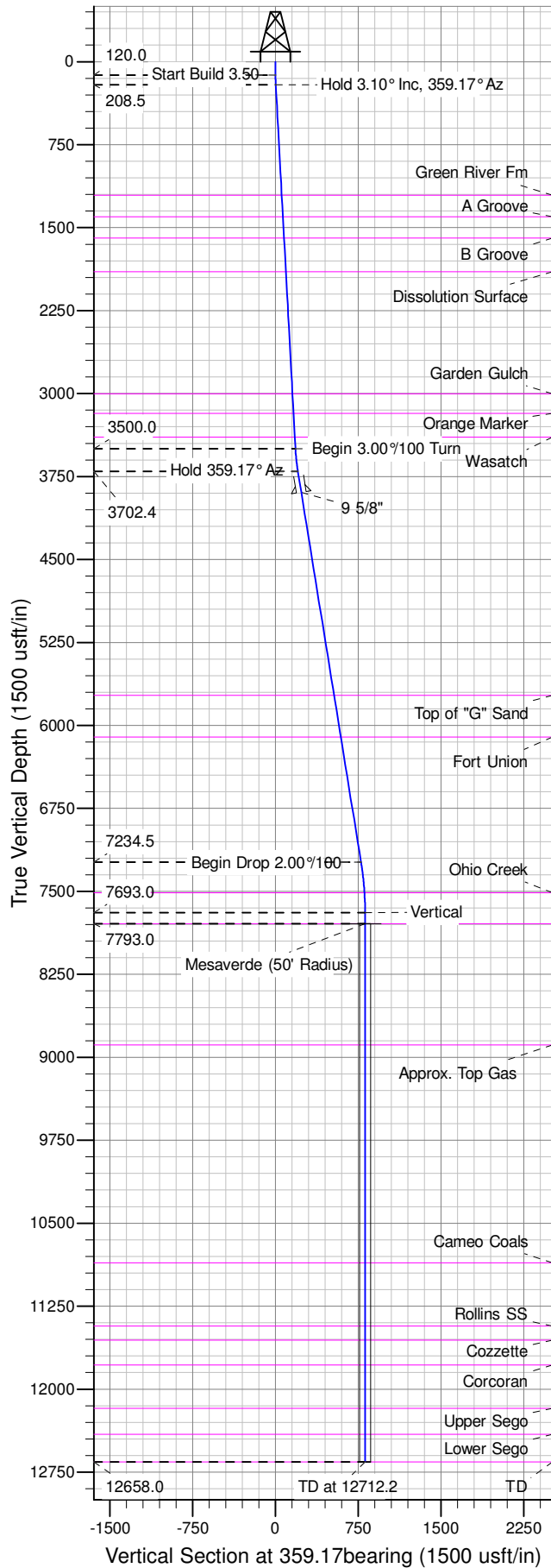
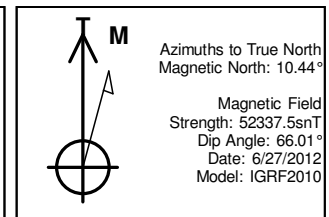
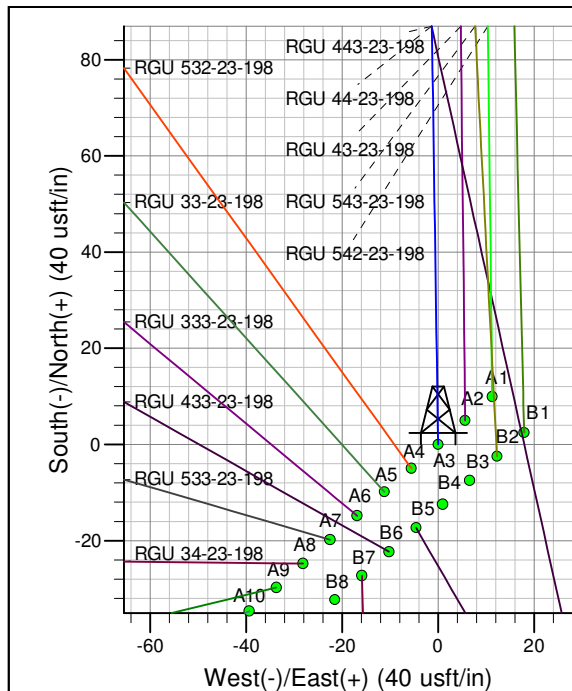
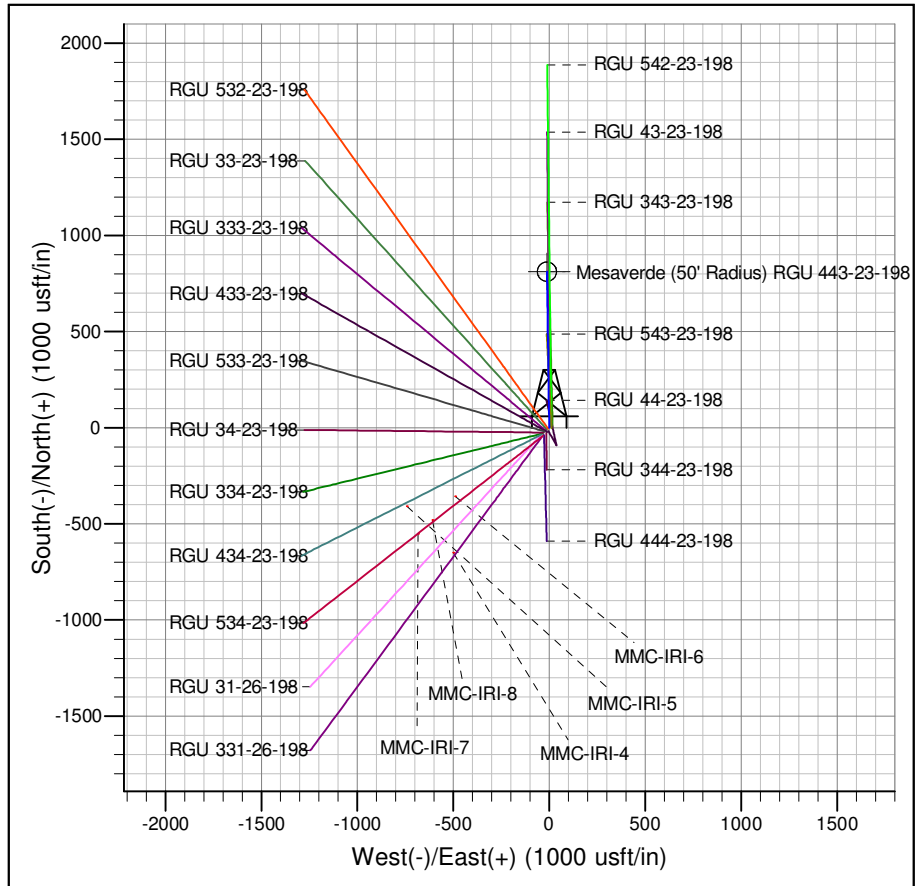




Well Name: RGU 443-23-198
Surface Location: RGU 43-23-198 Pad
North American Datum 1983 , US State Plane 1983 , Colorado Central Zone
Ground Elevation: 6567.0
+N/-S +E/-W Northing Easting Latitude Longitude Slot
0.0 0.0 1781586.5000 2199979.6000 39.94477 -108.35360 A3
KELLY BUSHING @ 6588.0usft (Cyclone 29 (21' RKB) kjs)



ANNOTATIONS									
TVD	MD	Inc	Azi	+N/-S	+E/-W	VSec	Departure	Annotation	
120.0	120.0	0.00	0.00	0.0	0.0	0.0	0.0	Start Build 3.50	
208.5	208.6	3.10	359.17	2.4	0.0	2.4	2.4	Hold 3.10° Inc, 359.17° Az	
3500.0	3504.9	3.10	359.17	180.6	-2.6	180.7	180.7	Begin 3.00°/100 Turn	
3702.4	3708.5	9.21	359.17	202.5	-2.9	202.5	202.5	Hold 359.17° Az	
7234.5	7286.8	9.21	359.17	775.0	-11.2	775.1	775.1	Begin Drop 2.00°/100	
7693.0	7747.2	0.00	0.00	812.0	-11.8	812.1	812.1	Vertical	
7793.0	7847.2	0.00	0.00	812.0	-11.8	812.1	812.1	Mesaverde	
12658.0	12712.2	0.00	0.00	812.0	-11.8	812.1	812.1	TD at 12712.2	



Project: RG 23-01S-098W
Site: RGU 43-23-198 Pad
Well: RGU 443-23-198
Design #3 18Apr14 mab