



Bill Barrett Corporation

Bill Barrett Corp.

Weld Co., CO

Sec.33-T4N-R62W

Anschutz Eq Farms 4-62-33-3225CH2

Wellbore #1

Plan: Design #1

Standard Planning Report

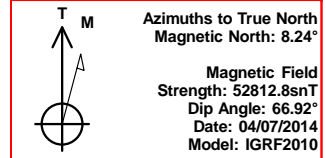
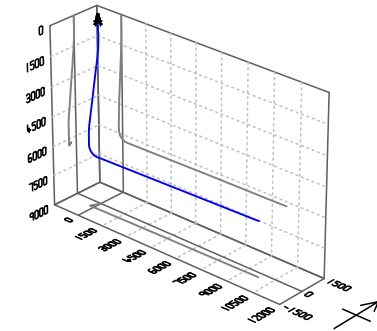
07 April, 2014

Archer



Bill Barrett Corp.
Project: Weld Co., CO
Site: Sec.33-T4N-R62W
Well: Anschutz Eq Farms 4-62-33-3225CH2
Wellbore: Wellbore #1
Design: Design #1
Lat: 40° 16' 12.389 N
Long: 104° 20' 15.040 W
Pad GL: 4658.00
KB: WELL @ 4674.00usft (Original Well Elev)

Archer



SECTION DETAILS

MD	Inc	Azi	TVD	+N/-S	+E/-W	Dleg	TFace	VSec	Annotation
0.00	0.00	0.00	0.00	0.00	0.00	0.00	0.00	0.00	
900.00	0.00	0.00	900.00	0.00	0.00	0.00	0.00	0.00	Start Build 1.50
1406.74	7.60	205.55	1405.26	-30.28	-14.48	1.50	205.55	-14.92	Start 3476.57 hold at 1406.74 MD
4883.31	7.60	205.55	4851.28	-445.17	-212.84	0.00	0.00	-219.35	Start Drop -1.50
5390.06	0.00	0.00	5356.54	-475.45	-227.32	1.50	180.00	-234.27	Start 500.03 hold at 5390.06 MD
5890.09	0.00	0.00	5856.57	-475.45	-227.32	0.00	0.00	-234.27	Start Build 12.00
6645.59	90.66	89.16	6334.00	-468.33	255.60	12.00	89.16	248.70	Start 9541.48 hold at 6645.59 MD
16187.08	90.66	89.16	6224.00	-327.73	9795.41	0.00	0.00	9789.55	TD at 16187.08

WELL DETAILS: Anschutz Eq Farms 4-62-33-3225CH2

+N/-S	+E/-W	Northing	Ground Level: Easting	Latitude	Longitude	Slot
0.00	0.00	1343368.011	4658.00	40° 16' 12.389 N	104° 20' 15.040 W	

PROJECT DETAILS: Weld Co., CO

Geodetic System: US State Plane 1983
Datum: North American Datum 1983
Ellipsoid: GRS 1980
Zone: Colorado Northern Zone

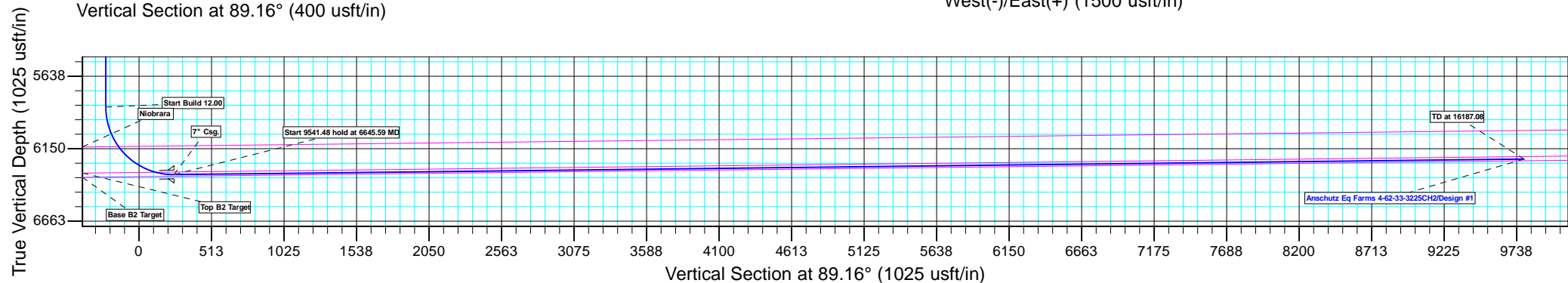
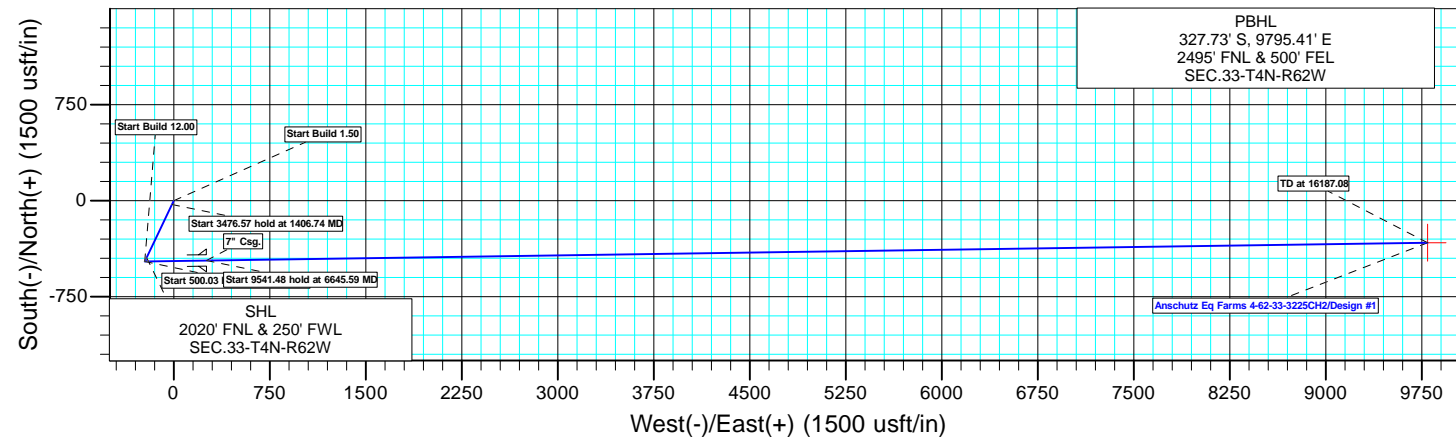
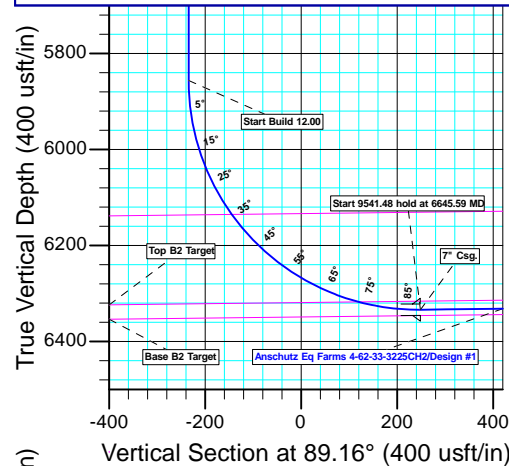
System Datum: Mean Sea Level

CASING DETAILS

TVD	MD	Name
6334.00	6645.59	7" Csg.

WELLBORE TARGET DETAILS (LAT/LONG)

Name	TVD	+N/-S	+E/-W	Latitude	Longitude	Shape
Anschutz Eq Farms 4-62-33-3225CH2 tgt	6224.00	-327.73	9795.41	40° 16' 9.131 N	104° 18' 8.669 W	Point



Plan: Design #1 (Anschutz Eq Farms 4-62-33-3225CH2/Wellbore #1)

Created By: Ricky Osburn Date: 10:59, April 07 2014

Database:	EDMDBBW	Local Co-ordinate Reference:	Well Anschutz Eq Farms 4-62-33-3225CH2
Company:	Bill Barrett Corp.	TVD Reference:	WELL @ 4674.00usft (Original Well Elev)
Project:	Weld Co., CO	MD Reference:	WELL @ 4674.00usft (Original Well Elev)
Site:	Sec.33-T4N-R62W	North Reference:	True
Well:	Anschutz Eq Farms 4-62-33-3225CH2	Survey Calculation Method:	Minimum Curvature
Wellbore:	Wellbore #1		
Design:	Design #1		

Project	Weld Co., CO		
Map System:	US State Plane 1983	System Datum:	Mean Sea Level
Geo Datum:	North American Datum 1983		
Map Zone:	Colorado Northern Zone		

Site		Sec.33-T4N-R62W			
Site Position:		Northing:	1,342,329.373 usft	Latitude:	40° 16' 2.122 N
From:	Lat/Long	Easting:	3,324,406.065 usft	Longitude:	104° 20' 14.831 W
Position Uncertainty:	0.00 usft	Slot Radius:	13-3/16 "	Grid Convergence:	0.75 °

Well	Anschutz Eq Farms 4-62-33-3225CH2					
Well Position	+N/-S	1,038.94 usft	Northing:	1,343,368.011 usft	Latitude:	40° 16' 12.389 N
	+E/-W	-16.18 usft	Easting:	3,324,376.261 usft	Longitude:	104° 20' 15.040 W
Position Uncertainty		0.00 usft	Wellhead Elevation:	usft	Ground Level:	4,658.00 usft

Wellbore	Wellbore #1				
Magnetics	Model Name	Sample Date	Declination (°)	Dip Angle (°)	Field Strength (nT)
	IGRF2010	2014/04/07	8.24	66.92	52,813

Design	Design #1			
Audit Notes:				
Version:	Phase:	PLAN	Tie On Depth:	0.00
Vertical Section:	Depth From (TVD) (usft)	+N/-S (usft)	+E/-W (usft)	Direction (°)
	0.00	0.00	0.00	89.16

Plan Sections										
Measured Depth (usft)	Inclination (°)	Azimuth (°)	Vertical Depth (usft)	+N/-S (usft)	+E/-W (usft)	Dogleg Rate (°/100usft)	Build Rate (°/100usft)	Turn Rate (°/100usft)	TFO (°)	Target
0.00	0.00	0.00	0.00	0.00	0.00	0.00	0.00	0.00	0.00	
900.00	0.00	0.00	900.00	0.00	0.00	0.00	0.00	0.00	0.00	
1,406.74	7.60	205.55	1,405.26	-30.28	-14.48	1.50	1.50	0.00	205.55	
4,883.31	7.60	205.55	4,851.28	-445.17	-212.84	0.00	0.00	0.00	0.00	
5,390.06	0.00	0.00	5,356.54	-475.45	-227.32	1.50	-1.50	0.00	180.00	
5,890.09	0.00	0.00	5,856.57	-475.45	-227.32	0.00	0.00	0.00	0.00	
6,645.59	90.66	89.16	6,334.00	-468.33	255.60	12.00	12.00	0.00	89.16	Anschutz Eq Farms 4
16,187.08	90.66	89.16	6,224.00	-327.73	9,795.41	0.00	0.00	0.00	0.00	Anschutz Eq Farms 4

Database:	EDMDBBW	Local Co-ordinate Reference:	Well Anschutz Eq Farms 4-62-33-3225CH2
Company:	Bill Barrett Corp.	TVD Reference:	WELL @ 4674.00usft (Original Well Elev)
Project:	Weld Co., CO	MD Reference:	WELL @ 4674.00usft (Original Well Elev)
Site:	Sec.33-T4N-R62W	North Reference:	True
Well:	Anschutz Eq Farms 4-62-33-3225CH2	Survey Calculation Method:	Minimum Curvature
Wellbore:	Wellbore #1		
Design:	Design #1		

Planned Survey									
Measured Depth (usft)	Inclination (°)	Azimuth (°)	Vertical Depth (usft)	+N/-S (usft)	+E/-W (usft)	Vertical Section (usft)	Dogleg Rate (°/100usft)	Build Rate (°/100usft)	Turn Rate (°/100usft)
0.00	0.00	0.00	0.00	0.00	0.00	0.00	0.00	0.00	0.00
100.00	0.00	0.00	100.00	0.00	0.00	0.00	0.00	0.00	0.00
200.00	0.00	0.00	200.00	0.00	0.00	0.00	0.00	0.00	0.00
300.00	0.00	0.00	300.00	0.00	0.00	0.00	0.00	0.00	0.00
400.00	0.00	0.00	400.00	0.00	0.00	0.00	0.00	0.00	0.00
500.00	0.00	0.00	500.00	0.00	0.00	0.00	0.00	0.00	0.00
600.00	0.00	0.00	600.00	0.00	0.00	0.00	0.00	0.00	0.00
Sharon Springs									
634.00	0.00	0.00	634.00	0.00	0.00	0.00	0.00	0.00	0.00
700.00	0.00	0.00	700.00	0.00	0.00	0.00	0.00	0.00	0.00
800.00	0.00	0.00	800.00	0.00	0.00	0.00	0.00	0.00	0.00
Start Build 1.50									
900.00	0.00	0.00	900.00	0.00	0.00	0.00	0.00	0.00	0.00
1,000.00	1.50	205.55	999.99	-1.18	-0.56	-0.58	1.50	1.50	0.00
1,100.00	3.00	205.55	1,099.91	-4.72	-2.26	-2.33	1.50	1.50	0.00
1,200.00	4.50	205.55	1,199.69	-10.62	-5.08	-5.23	1.50	1.50	0.00
1,300.00	6.00	205.55	1,299.27	-18.88	-9.03	-9.30	1.50	1.50	0.00
Start 3476.57 hold at 1406.74 MD									
1,406.74	7.60	205.55	1,405.26	-30.28	-14.48	-14.92	1.50	1.50	0.00
1,500.00	7.60	205.55	1,497.70	-41.41	-19.80	-20.40	0.00	0.00	0.00
1,600.00	7.60	205.55	1,596.82	-53.34	-25.50	-26.28	0.00	0.00	0.00
1,700.00	7.60	205.55	1,695.94	-65.28	-31.21	-32.16	0.00	0.00	0.00
1,800.00	7.60	205.55	1,795.06	-77.21	-36.92	-38.04	0.00	0.00	0.00
1,900.00	7.60	205.55	1,894.18	-89.15	-42.62	-43.92	0.00	0.00	0.00
2,000.00	7.60	205.55	1,993.30	-101.08	-48.33	-49.80	0.00	0.00	0.00
2,100.00	7.60	205.55	2,092.42	-113.01	-54.03	-55.68	0.00	0.00	0.00
2,200.00	7.60	205.55	2,191.54	-124.95	-59.74	-61.56	0.00	0.00	0.00
2,300.00	7.60	205.55	2,290.67	-136.88	-65.44	-67.44	0.00	0.00	0.00
2,400.00	7.60	205.55	2,389.79	-148.81	-71.15	-73.32	0.00	0.00	0.00
2,500.00	7.60	205.55	2,488.91	-160.75	-76.86	-79.20	0.00	0.00	0.00
2,600.00	7.60	205.55	2,588.03	-172.68	-82.56	-85.08	0.00	0.00	0.00
2,700.00	7.60	205.55	2,687.15	-184.62	-88.27	-90.96	0.00	0.00	0.00
2,800.00	7.60	205.55	2,786.27	-196.55	-93.97	-96.84	0.00	0.00	0.00
2,900.00	7.60	205.55	2,885.39	-208.48	-99.68	-102.72	0.00	0.00	0.00
3,000.00	7.60	205.55	2,984.51	-220.42	-105.38	-108.61	0.00	0.00	0.00
3,100.00	7.60	205.55	3,083.64	-232.35	-111.09	-114.49	0.00	0.00	0.00
3,200.00	7.60	205.55	3,182.76	-244.29	-116.80	-120.37	0.00	0.00	0.00
3,300.00	7.60	205.55	3,281.88	-256.22	-122.50	-126.25	0.00	0.00	0.00
3,400.00	7.60	205.55	3,381.00	-268.15	-128.21	-132.13	0.00	0.00	0.00
3,500.00	7.60	205.55	3,480.12	-280.09	-133.91	-138.01	0.00	0.00	0.00
3,600.00	7.60	205.55	3,579.24	-292.02	-139.62	-143.89	0.00	0.00	0.00
3,700.00	7.60	205.55	3,678.36	-303.95	-145.33	-149.77	0.00	0.00	0.00
3,800.00	7.60	205.55	3,777.48	-315.89	-151.03	-155.65	0.00	0.00	0.00
3,900.00	7.60	205.55	3,876.61	-327.82	-156.74	-161.53	0.00	0.00	0.00
4,000.00	7.60	205.55	3,975.73	-339.76	-162.44	-167.41	0.00	0.00	0.00
4,100.00	7.60	205.55	4,074.85	-351.69	-168.15	-173.29	0.00	0.00	0.00
4,200.00	7.60	205.55	4,173.97	-363.62	-173.85	-179.17	0.00	0.00	0.00
4,300.00	7.60	205.55	4,273.09	-375.56	-179.56	-185.05	0.00	0.00	0.00
4,400.00	7.60	205.55	4,372.21	-387.49	-185.27	-190.93	0.00	0.00	0.00
4,500.00	7.60	205.55	4,471.33	-399.42	-190.97	-196.81	0.00	0.00	0.00
4,600.00	7.60	205.55	4,570.46	-411.36	-196.68	-202.69	0.00	0.00	0.00
4,700.00	7.60	205.55	4,669.58	-423.29	-202.38	-208.57	0.00	0.00	0.00
4,800.00	7.60	205.55	4,768.70	-435.23	-208.09	-214.45	0.00	0.00	0.00

Database:	EDMDBBW	Local Co-ordinate Reference:	Well Anschutz Eq Farms 4-62-33-3225CH2
Company:	Bill Barrett Corp.	TVD Reference:	WELL @ 4674.00usft (Original Well Elev)
Project:	Weld Co., CO	MD Reference:	WELL @ 4674.00usft (Original Well Elev)
Site:	Sec.33-T4N-R62W	North Reference:	True
Well:	Anschutz Eq Farms 4-62-33-3225CH2	Survey Calculation Method:	Minimum Curvature
Wellbore:	Wellbore #1		
Design:	Design #1		

Planned Survey									
Measured Depth (usft)	Inclination (°)	Azimuth (°)	Vertical Depth (usft)	+N/-S (usft)	+E/-W (usft)	Vertical Section (usft)	Dogleg Rate (°/100usft)	Build Rate (°/100usft)	Turn Rate (°/100usft)
Start Drop -1.50									
4,883.31	7.60	205.55	4,851.28	-445.17	-212.84	-219.35	0.00	0.00	0.00
4,900.00	7.35	205.55	4,867.82	-447.13	-213.78	-220.31	1.50	-1.50	0.00
5,000.00	5.85	205.55	4,967.16	-457.50	-218.74	-225.42	1.50	-1.50	0.00
5,100.00	4.35	205.55	5,066.76	-465.52	-222.57	-229.37	1.50	-1.50	0.00
Shannon									
5,196.11	2.91	205.55	5,162.67	-471.01	-225.20	-232.08	1.50	-1.50	0.00
5,200.00	2.85	205.55	5,166.56	-471.18	-225.28	-232.16	1.50	-1.50	0.00
5,300.00	1.35	205.55	5,266.49	-474.49	-226.86	-233.79	1.50	-1.50	0.00
Start 500.03 hold at 5390.06 MD									
5,390.06	0.00	0.00	5,356.54	-475.45	-227.32	-234.27	1.50	-1.50	0.00
5,400.00	0.00	0.00	5,366.48	-475.45	-227.32	-234.27	0.00	0.00	0.00
5,500.00	0.00	0.00	5,466.48	-475.45	-227.32	-234.27	0.00	0.00	0.00
5,600.00	0.00	0.00	5,566.48	-475.45	-227.32	-234.27	0.00	0.00	0.00
5,700.00	0.00	0.00	5,666.48	-475.45	-227.32	-234.27	0.00	0.00	0.00
5,800.00	0.00	0.00	5,766.48	-475.45	-227.32	-234.27	0.00	0.00	0.00
Start Build 12.00									
5,890.09	0.00	0.00	5,856.57	-475.45	-227.32	-234.27	0.00	0.00	0.00
5,900.00	1.19	89.16	5,866.48	-475.45	-227.22	-234.16	12.00	12.00	0.00
5,925.00	4.19	89.16	5,891.45	-475.43	-226.04	-232.99	12.00	12.00	0.00
5,950.00	7.19	89.16	5,916.32	-475.39	-223.57	-230.51	12.00	12.00	0.00
5,975.00	10.19	89.16	5,941.03	-475.34	-219.79	-226.74	12.00	12.00	0.00
6,000.00	13.19	89.16	5,965.51	-475.26	-214.73	-221.67	12.00	12.00	0.00
6,025.00	16.19	89.16	5,989.69	-475.17	-208.39	-215.33	12.00	12.00	0.00
6,050.00	19.19	89.16	6,013.51	-475.06	-200.79	-207.74	12.00	12.00	0.00
6,075.00	22.19	89.16	6,036.89	-474.93	-191.96	-198.90	12.00	12.00	0.00
6,100.00	25.19	89.16	6,059.78	-474.78	-181.92	-188.86	12.00	12.00	0.00
6,125.00	28.19	89.16	6,082.12	-474.62	-170.69	-177.63	12.00	12.00	0.00
6,150.00	31.19	89.16	6,103.83	-474.43	-158.31	-165.25	12.00	12.00	0.00
6,175.00	34.19	89.16	6,124.87	-474.23	-144.81	-151.75	12.00	12.00	0.00
Niobrara									
6,188.17	35.77	89.16	6,135.66	-474.12	-137.27	-144.20	12.00	12.00	0.00
6,200.00	37.19	89.16	6,145.17	-474.02	-130.23	-137.17	12.00	12.00	0.00
6,225.00	40.19	89.16	6,164.68	-473.79	-114.61	-121.54	12.00	12.00	0.00
6,250.00	43.19	89.16	6,183.35	-473.54	-97.99	-104.92	12.00	12.00	0.00
6,275.00	46.19	89.16	6,201.12	-473.28	-80.41	-87.34	12.00	12.00	0.00
6,300.00	49.19	89.16	6,217.95	-473.01	-61.92	-68.85	12.00	12.00	0.00
6,325.00	52.19	89.16	6,233.79	-472.73	-42.59	-49.51	12.00	12.00	0.00
6,350.00	55.19	89.16	6,248.59	-472.43	-22.44	-29.37	12.00	12.00	0.00
6,375.00	58.19	89.16	6,262.32	-472.12	-1.56	-8.48	12.00	12.00	0.00
6,400.00	61.19	89.16	6,274.93	-471.80	20.02	13.10	12.00	12.00	0.00
6,425.00	64.19	89.16	6,286.40	-471.48	42.23	35.31	12.00	12.00	0.00
6,450.00	67.19	89.16	6,296.69	-471.14	65.01	58.09	12.00	12.00	0.00
6,475.00	70.19	89.16	6,305.78	-470.80	88.29	81.38	12.00	12.00	0.00
6,500.00	73.19	89.16	6,313.63	-470.45	112.02	105.11	12.00	12.00	0.00
Top B2 Target									
6,514.57	74.94	89.16	6,317.63	-470.24	126.03	119.12	12.00	12.00	0.00
6,525.00	76.19	89.16	6,320.23	-470.09	136.13	129.22	12.00	12.00	0.00
6,550.00	79.19	89.16	6,325.56	-469.73	160.55	153.65	12.00	12.00	0.00
6,575.00	82.19	89.16	6,329.60	-469.37	185.21	178.31	12.00	12.00	0.00
6,600.00	85.19	89.16	6,332.35	-469.00	210.06	203.16	12.00	12.00	0.00
6,625.00	88.19	89.16	6,333.79	-468.64	235.01	228.12	12.00	12.00	0.00
Start 9541.48 hold at 6645.59 MD - 7" Csg.									

Database:	EDMDBBW	Local Co-ordinate Reference:	Well Anschutz Eq Farms 4-62-33-3225CH2
Company:	Bill Barrett Corp.	TVD Reference:	WELL @ 4674.00usft (Original Well Elev)
Project:	Weld Co., CO	MD Reference:	WELL @ 4674.00usft (Original Well Elev)
Site:	Sec.33-T4N-R62W	North Reference:	True
Well:	Anschutz Eq Farms 4-62-33-3225CH2	Survey Calculation Method:	Minimum Curvature
Wellbore:	Wellbore #1		
Design:	Design #1		

Planned Survey										
Measured Depth (usft)	Inclination (°)	Azimuth (°)	Vertical Depth (usft)	+N/-S (usft)	+E/-W (usft)	Vertical Section (usft)	Dogleg Rate (°/100usft)	Build Rate (°/100usft)	Turn Rate (°/100usft)	
6,645.59	90.66	89.16	6,334.00	-468.33	255.60	248.70	12.00	12.00	0.00	
6,700.00	90.66	89.16	6,333.37	-467.53	310.00	303.11	0.00	0.00	0.00	
6,800.00	90.66	89.16	6,332.22	-466.06	409.98	403.10	0.00	0.00	0.00	
6,900.00	90.66	89.16	6,331.07	-464.58	509.96	503.10	0.00	0.00	0.00	
7,000.00	90.66	89.16	6,329.91	-463.11	609.94	603.09	0.00	0.00	0.00	
7,100.00	90.66	89.16	6,328.76	-461.64	709.93	703.08	0.00	0.00	0.00	
7,200.00	90.66	89.16	6,327.61	-460.16	809.91	803.08	0.00	0.00	0.00	
7,300.00	90.66	89.16	6,326.46	-458.69	909.89	903.07	0.00	0.00	0.00	
7,400.00	90.66	89.16	6,325.30	-457.22	1,009.87	1,003.06	0.00	0.00	0.00	
7,500.00	90.66	89.16	6,324.15	-455.74	1,109.86	1,103.06	0.00	0.00	0.00	
7,600.00	90.66	89.16	6,323.00	-454.27	1,209.84	1,203.05	0.00	0.00	0.00	
7,700.00	90.66	89.16	6,321.84	-452.80	1,309.82	1,303.04	0.00	0.00	0.00	
7,800.00	90.66	89.16	6,320.69	-451.32	1,409.80	1,403.04	0.00	0.00	0.00	
7,900.00	90.66	89.16	6,319.54	-449.85	1,509.79	1,503.03	0.00	0.00	0.00	
8,000.00	90.66	89.16	6,318.39	-448.37	1,609.77	1,603.02	0.00	0.00	0.00	
8,100.00	90.66	89.16	6,317.23	-446.90	1,709.75	1,703.02	0.00	0.00	0.00	
8,200.00	90.66	89.16	6,316.08	-445.43	1,809.73	1,803.01	0.00	0.00	0.00	
8,300.00	90.66	89.16	6,314.93	-443.95	1,909.72	1,903.00	0.00	0.00	0.00	
8,400.00	90.66	89.16	6,313.77	-442.48	2,009.70	2,003.00	0.00	0.00	0.00	
8,500.00	90.66	89.16	6,312.62	-441.01	2,109.68	2,102.99	0.00	0.00	0.00	
8,600.00	90.66	89.16	6,311.47	-439.53	2,209.66	2,202.98	0.00	0.00	0.00	
8,700.00	90.66	89.16	6,310.32	-438.06	2,309.65	2,302.98	0.00	0.00	0.00	
8,800.00	90.66	89.16	6,309.16	-436.59	2,409.63	2,402.97	0.00	0.00	0.00	
8,900.00	90.66	89.16	6,308.01	-435.11	2,509.61	2,502.96	0.00	0.00	0.00	
9,000.00	90.66	89.16	6,306.86	-433.64	2,609.59	2,602.96	0.00	0.00	0.00	
9,100.00	90.66	89.16	6,305.70	-432.17	2,709.58	2,702.95	0.00	0.00	0.00	
9,200.00	90.66	89.16	6,304.55	-430.69	2,809.56	2,802.94	0.00	0.00	0.00	
9,300.00	90.66	89.16	6,303.40	-429.22	2,909.54	2,902.94	0.00	0.00	0.00	
9,400.00	90.66	89.16	6,302.24	-427.74	3,009.52	3,002.93	0.00	0.00	0.00	
9,500.00	90.66	89.16	6,301.09	-426.27	3,109.51	3,102.92	0.00	0.00	0.00	
9,600.00	90.66	89.16	6,299.94	-424.80	3,209.49	3,202.92	0.00	0.00	0.00	
9,700.00	90.66	89.16	6,298.79	-423.32	3,309.47	3,302.91	0.00	0.00	0.00	
9,800.00	90.66	89.16	6,297.63	-421.85	3,409.45	3,402.90	0.00	0.00	0.00	
9,900.00	90.66	89.16	6,296.48	-420.38	3,509.44	3,502.90	0.00	0.00	0.00	
10,000.00	90.66	89.16	6,295.33	-418.90	3,609.42	3,602.89	0.00	0.00	0.00	
10,100.00	90.66	89.16	6,294.17	-417.43	3,709.40	3,702.88	0.00	0.00	0.00	
10,200.00	90.66	89.16	6,293.02	-415.96	3,809.38	3,802.88	0.00	0.00	0.00	
10,300.00	90.66	89.16	6,291.87	-414.48	3,909.37	3,902.87	0.00	0.00	0.00	
10,400.00	90.66	89.16	6,290.72	-413.01	4,009.35	4,002.86	0.00	0.00	0.00	
10,500.00	90.66	89.16	6,289.56	-411.54	4,109.33	4,102.86	0.00	0.00	0.00	
10,600.00	90.66	89.16	6,288.41	-410.06	4,209.31	4,202.85	0.00	0.00	0.00	
10,700.00	90.66	89.16	6,287.26	-408.59	4,309.30	4,302.84	0.00	0.00	0.00	
10,800.00	90.66	89.16	6,286.10	-407.11	4,409.28	4,402.84	0.00	0.00	0.00	
10,900.00	90.66	89.16	6,284.95	-405.64	4,509.26	4,502.83	0.00	0.00	0.00	
11,000.00	90.66	89.16	6,283.80	-404.17	4,609.24	4,602.82	0.00	0.00	0.00	
11,100.00	90.66	89.16	6,282.65	-402.69	4,709.23	4,702.82	0.00	0.00	0.00	
11,200.00	90.66	89.16	6,281.49	-401.22	4,809.21	4,802.81	0.00	0.00	0.00	
11,300.00	90.66	89.16	6,280.34	-399.75	4,909.19	4,902.80	0.00	0.00	0.00	
11,400.00	90.66	89.16	6,279.19	-398.27	5,009.17	5,002.80	0.00	0.00	0.00	
11,500.00	90.66	89.16	6,278.03	-396.80	5,109.16	5,102.79	0.00	0.00	0.00	
11,600.00	90.66	89.16	6,276.88	-395.33	5,209.14	5,202.78	0.00	0.00	0.00	
11,700.00	90.66	89.16	6,275.73	-393.85	5,309.12	5,302.78	0.00	0.00	0.00	
11,800.00	90.66	89.16	6,274.58	-392.38	5,409.10	5,402.77	0.00	0.00	0.00	
11,900.00	90.66	89.16	6,273.42	-390.91	5,509.09	5,502.76	0.00	0.00	0.00	

Database:	EDMDBBW	Local Co-ordinate Reference:	Well Anschutz Eq Farms 4-62-33-3225CH2
Company:	Bill Barrett Corp.	TVD Reference:	WELL @ 4674.00usft (Original Well Elev)
Project:	Weld Co., CO	MD Reference:	WELL @ 4674.00usft (Original Well Elev)
Site:	Sec.33-T4N-R62W	North Reference:	True
Well:	Anschutz Eq Farms 4-62-33-3225CH2	Survey Calculation Method:	Minimum Curvature
Wellbore:	Wellbore #1		
Design:	Design #1		

Planned Survey										
Measured Depth (usft)	Inclination (°)	Azimuth (°)	Vertical Depth (usft)	+N/-S (usft)	+E/-W (usft)	Vertical Section (usft)	Dogleg Rate (°/100usft)	Build Rate (°/100usft)	Turn Rate (°/100usft)	
12,000.00	90.66	89.16	6,272.27	-389.43	5,609.07	5,602.76	0.00	0.00	0.00	
12,100.00	90.66	89.16	6,271.12	-387.96	5,709.05	5,702.75	0.00	0.00	0.00	
12,200.00	90.66	89.16	6,269.96	-386.49	5,809.03	5,802.74	0.00	0.00	0.00	
12,300.00	90.66	89.16	6,268.81	-385.01	5,909.02	5,902.74	0.00	0.00	0.00	
12,400.00	90.66	89.16	6,267.66	-383.54	6,009.00	6,002.73	0.00	0.00	0.00	
12,500.00	90.66	89.16	6,266.51	-382.06	6,108.98	6,102.72	0.00	0.00	0.00	
12,600.00	90.66	89.16	6,265.35	-380.59	6,208.96	6,202.72	0.00	0.00	0.00	
12,700.00	90.66	89.16	6,264.20	-379.12	6,308.95	6,302.71	0.00	0.00	0.00	
12,800.00	90.66	89.16	6,263.05	-377.64	6,408.93	6,402.70	0.00	0.00	0.00	
12,900.00	90.66	89.16	6,261.89	-376.17	6,508.91	6,502.70	0.00	0.00	0.00	
13,000.00	90.66	89.16	6,260.74	-374.70	6,608.89	6,602.69	0.00	0.00	0.00	
13,100.00	90.66	89.16	6,259.59	-373.22	6,708.88	6,702.68	0.00	0.00	0.00	
13,200.00	90.66	89.16	6,258.44	-371.75	6,808.86	6,802.68	0.00	0.00	0.00	
13,300.00	90.66	89.16	6,257.28	-370.28	6,908.84	6,902.67	0.00	0.00	0.00	
13,400.00	90.66	89.16	6,256.13	-368.80	7,008.82	7,002.66	0.00	0.00	0.00	
13,500.00	90.66	89.16	6,254.98	-367.33	7,108.81	7,102.66	0.00	0.00	0.00	
13,600.00	90.66	89.16	6,253.82	-365.86	7,208.79	7,202.65	0.00	0.00	0.00	
13,700.00	90.66	89.16	6,252.67	-364.38	7,308.77	7,302.64	0.00	0.00	0.00	
13,800.00	90.66	89.16	6,251.52	-362.91	7,408.75	7,402.64	0.00	0.00	0.00	
13,900.00	90.66	89.16	6,250.36	-361.43	7,508.74	7,502.63	0.00	0.00	0.00	
14,000.00	90.66	89.16	6,249.21	-359.96	7,608.72	7,602.62	0.00	0.00	0.00	
14,100.00	90.66	89.16	6,248.06	-358.49	7,708.70	7,702.62	0.00	0.00	0.00	
14,200.00	90.66	89.16	6,246.91	-357.01	7,808.68	7,802.61	0.00	0.00	0.00	
14,300.00	90.66	89.16	6,245.75	-355.54	7,908.67	7,902.60	0.00	0.00	0.00	
14,400.00	90.66	89.16	6,244.60	-354.07	8,008.65	8,002.60	0.00	0.00	0.00	
14,500.00	90.66	89.16	6,243.45	-352.59	8,108.63	8,102.59	0.00	0.00	0.00	
14,600.00	90.66	89.16	6,242.29	-351.12	8,208.61	8,202.58	0.00	0.00	0.00	
14,700.00	90.66	89.16	6,241.14	-349.65	8,308.60	8,302.58	0.00	0.00	0.00	
14,800.00	90.66	89.16	6,239.99	-348.17	8,408.58	8,402.57	0.00	0.00	0.00	
14,900.00	90.66	89.16	6,238.84	-346.70	8,508.56	8,502.56	0.00	0.00	0.00	
15,000.00	90.66	89.16	6,237.68	-345.23	8,608.54	8,602.56	0.00	0.00	0.00	
15,100.00	90.66	89.16	6,236.53	-343.75	8,708.53	8,702.55	0.00	0.00	0.00	
15,200.00	90.66	89.16	6,235.38	-342.28	8,808.51	8,802.54	0.00	0.00	0.00	
15,300.00	90.66	89.16	6,234.22	-340.80	8,908.49	8,902.54	0.00	0.00	0.00	
15,400.00	90.66	89.16	6,233.07	-339.33	9,008.47	9,002.53	0.00	0.00	0.00	
15,500.00	90.66	89.16	6,231.92	-337.86	9,108.46	9,102.52	0.00	0.00	0.00	
15,600.00	90.66	89.16	6,230.77	-336.38	9,208.44	9,202.52	0.00	0.00	0.00	
15,700.00	90.66	89.16	6,229.61	-334.91	9,308.42	9,302.51	0.00	0.00	0.00	
15,800.00	90.66	89.16	6,228.46	-333.44	9,408.40	9,402.50	0.00	0.00	0.00	
15,900.00	90.66	89.16	6,227.31	-331.96	9,508.39	9,502.50	0.00	0.00	0.00	
16,000.00	90.66	89.16	6,226.15	-330.49	9,608.37	9,602.49	0.00	0.00	0.00	
16,100.00	90.66	89.16	6,225.00	-329.02	9,708.35	9,702.48	0.00	0.00	0.00	
TD at 16187.08										
16,187.08	90.66	89.16	6,224.00	-327.73	9,795.41	9,789.55	0.00	0.00	0.00	

Database:	EDMDBBW	Local Co-ordinate Reference:	Well Anschutz Eq Farms 4-62-33-3225CH2
Company:	Bill Barrett Corp.	TVD Reference:	WELL @ 4674.00usft (Original Well Elev)
Project:	Weld Co., CO	MD Reference:	WELL @ 4674.00usft (Original Well Elev)
Site:	Sec.33-T4N-R62W	North Reference:	True
Well:	Anschutz Eq Farms 4-62-33-3225CH2	Survey Calculation Method:	Minimum Curvature
Wellbore:	Wellbore #1		
Design:	Design #1		

Design Targets									
Target Name	Dip Angle	Dip Dir.	TVD	+N/-S	+E/-W	Northing	Easting	Latitude	Longitude
- hit/miss target	(°)	(°)	(usft)	(usft)	(usft)	(usft)	(usft)		
- Shape									
Anschutz Eq Farms 4-62	0.00	0.00	6,224.00	-327.73	9,795.41	1,343,168.716	3,334,175.127	40° 16' 9.131 N	104° 18' 8.669 W
- plan hits target center									
- Point									

Casing Points					
Measured Depth	Vertical Depth	Name		Casing Diameter	Hole Diameter
(usft)	(usft)			(")	(")
6,645.59	6,334.00	7" Csg.		7	8-3/4

Formations					
Measured Depth	Vertical Depth	Name		Dip	Dip Direction
(usft)	(usft)			(°)	(°)
634.00	634.00	Sharon Springs		-0.66	89.16
5,196.11	5,160.00	Shannon		-0.66	89.16
6,188.17	6,134.00	Niobrara		-0.66	89.16
6,514.57	6,319.00	Top B2 Target		-0.66	89.16

Plan Annotations					
Measured Depth	Vertical Depth	Local Coordinates		Comment	
(usft)	(usft)	+N/-S	+E/-W		
(usft)	(usft)	(usft)	(usft)		
900.00	900.00	0.00	0.00	Start Build 1.50	
1,406.74	1,405.26	-30.28	-14.48	Start 3476.57 hold at 1406.74 MD	
4,883.31	4,851.28	-445.17	-212.84	Start Drop -1.50	
5,390.06	5,356.54	-475.45	-227.32	Start 500.03 hold at 5390.06 MD	
5,890.09	5,856.57	-475.45	-227.32	Start Build 12.00	
6,645.59	6,334.00	-468.33	255.60	Start 9541.48 hold at 6645.59 MD	
16,187.08	6,224.00	-327.73	9,795.41	TD at 16187.08	