



Bill Barrett Corporation

Bill Barrett Corp.

Weld Co., CO

Sec.33-T4N-R62W

Anschutz Eq Farms 4-62-33-3225CDH2

Wellbore #1

Plan: Design #1

Standard Planning Report

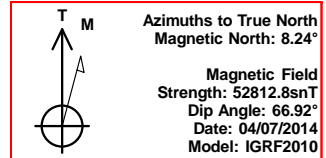
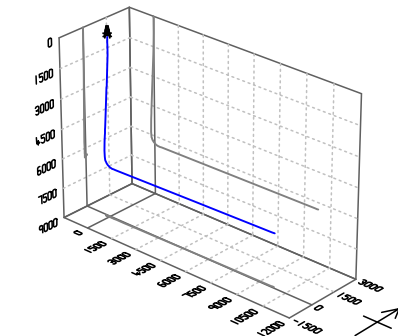
07 April, 2014

Archer



Bill Barrett Corp.
Project: Weld Co., CO
Site: Sec.33-T4N-R62W
Well: Anschutz Eq Farms 4-62-33-3225CDH2
Wellbore: Wellbore #1
Design: Design #1
Lat: 40° 16' 12.691 N
Long: 104° 20' 15.050 W
Pad GL: 4658.00
KB: WELL @ 4674.00usft (Original Well Elev)

Archer



SECTION DETAILS

MD	Inc	Azi	TVD	+N/-S	+E/-W	Dleg	TFace	VSec	Annotation
0.00	0.00	0.00	0.00	0.00	0.00	0.00	0.00	0.00	
900.00	0.00	0.00	900.00	0.00	0.00	0.00	0.00	0.00	Start Build 1.50
1109.41	3.14	251.50	1109.30	-1.82	-5.44	1.50	251.50	-5.47	Start 4164.19 hold at 1109.41 MD
5273.60	3.14	251.50	5267.24	-74.23	-221.83	0.00	0.00	-222.89	Start Drop -1.50
5483.01	0.00	0.00	5476.54	-76.05	-227.27	1.50	180.00	-228.36	Start 500.03 hold at 5483.01 MD
5983.04	0.00	0.00	5976.57	-76.05	-227.27	0.00	0.00	-228.36	Start Build 12.00
6738.80	90.69	89.16	6454.00	-68.93	255.90	12.00	89.16	254.86	Start 9533.25 hold at 6738.80 MD
16272.05	90.69	89.16	6339.00	71.52	9787.43	0.00	0.00	9787.42	TD at 16272.05

WELL DETAILS: Anschutz Eq Farms 4-62-33-3225CDH2

+N/-S	+E/-W	Northing	Ground Level: Easting	4658.00 Latitude	Longitude	Slot
0.00	0.00	1343398.598	3324375.023	40° 16' 12.691 N	104° 20' 15.050 W	

PROJECT DETAILS: Weld Co., CO

Geodetic System: US State Plane 1983
Datum: North American Datum 1983
Ellipsoid: GRS 1980
Zone: Colorado Northern Zone

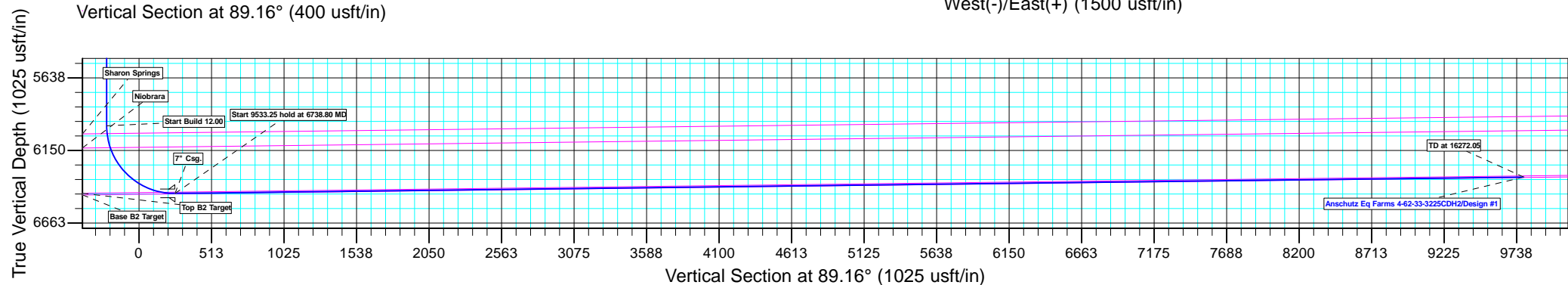
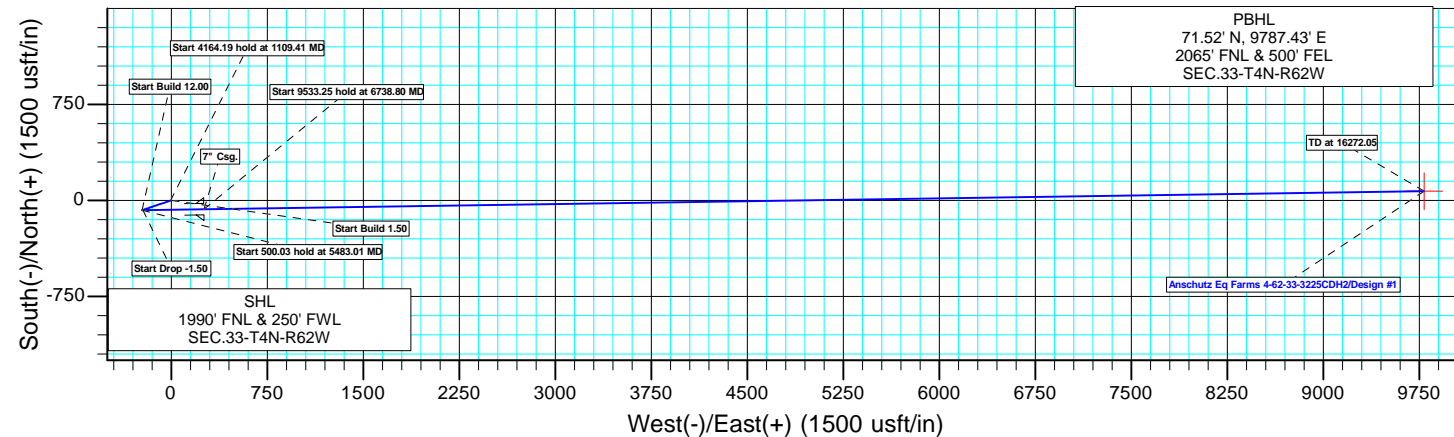
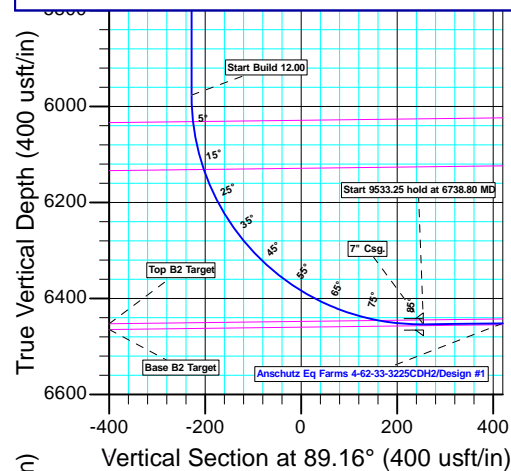
System Datum: Mean Sea Level

CASING DETAILS

TVD	MD	Name
6454.00	6738.80	7" Csg.

WELLBORE TARGET DETAILS (LAT/LONG)

Name	TVD	+N/-S	+E/-W	Latitude	Longitude	Shape Point
Anschutz Eq Farms 4-62-33-3225CDH2 tgt	6339.00	71.52	9787.43	40° 16' 13.379 N	104° 18' 8.780 W	



Plan: Design #1 (Anschutz Eq Farms 4-62-33-3225CDH2/Wellbore #1)

Created By: Ricky Osburn Date: 10:21, April 07 2014

Database:	EDMDBBW	Local Co-ordinate Reference:	Well Anschutz Eq Farms 4-62-33-3225CDH2
Company:	Bill Barrett Corp.	TVD Reference:	WELL @ 4674.00usft (Original Well Elev)
Project:	Weld Co., CO	MD Reference:	WELL @ 4674.00usft (Original Well Elev)
Site:	Sec.33-T4N-R62W	North Reference:	True
Well:	Anschutz Eq Farms 4-62-33-3225CDH2	Survey Calculation Method:	Minimum Curvature
Wellbore:	Wellbore #1		
Design:	Design #1		

Project	Weld Co., CO		
Map System:	US State Plane 1983	System Datum:	Mean Sea Level
Geo Datum:	North American Datum 1983		
Map Zone:	Colorado Northern Zone		

Site		Sec.33-T4N-R62W			
Site Position:		Northing:	1,342,329.373 usft	Latitude:	40° 16' 2.122 N
From:	Lat/Long	Easting:	3,324,406.065 usft	Longitude:	104° 20' 14.831 W
Position Uncertainty:	0.00 usft	Slot Radius:	13-3/16"	Grid Convergence:	0.75 °

Well	Anschutz Eq Farms 4-62-33-3225CDH2					
Well Position	+N/-S	1,069.54 usft	Northing:	1,343,398.598 usft	Latitude:	40° 16' 12.691 N
	+E/-W	-17.02 usft	Easting:	3,324,375.023 usft	Longitude:	104° 20' 15.050 W
Position Uncertainty		0.00 usft	Wellhead Elevation:	usft	Ground Level:	4,658.00 usft

Wellbore	Wellbore #1				
Magnetics	Model Name	Sample Date	Declination (°)	Dip Angle (°)	Field Strength (nT)
	IGRF2010	2014/04/07	8.24	66.92	52,813

Design	Design #1			
Audit Notes:				
Version:	Phase:	PLAN	Tie On Depth:	0.00
Vertical Section:	Depth From (TVD) (usft)	+N/-S (usft)	+E/-W (usft)	Direction (°)
	0.00	0.00	0.00	89.16

Plan Sections										
Measured Depth (usft)	Inclination (°)	Azimuth (°)	Vertical Depth (usft)	+N/-S (usft)	+E/-W (usft)	Dogleg Rate (°/100usft)	Build Rate (°/100usft)	Turn Rate (°/100usft)	TFO (°)	Target
0.00	0.00	0.00	0.00	0.00	0.00	0.00	0.00	0.00	0.00	
900.00	0.00	0.00	900.00	0.00	0.00	0.00	0.00	0.00	0.00	
1,109.41	3.14	251.50	1,109.30	-1.82	-5.44	1.50	1.50	0.00	251.50	
5,273.60	3.14	251.50	5,267.24	-74.23	-221.83	0.00	0.00	0.00	0.00	
5,483.01	0.00	0.00	5,476.54	-76.05	-227.27	1.50	-1.50	0.00	180.00	
5,983.04	0.00	0.00	5,976.57	-76.05	-227.27	0.00	0.00	0.00	0.00	
6,738.80	90.69	89.16	6,454.00	-68.93	255.90	12.00	12.00	0.00	89.16	Anschutz Eq Farms 4
16,272.05	90.69	89.16	6,339.00	71.52	9,787.43	0.00	0.00	0.00	0.00	Anschutz Eq Farms 4

Database:	EDMDBBW	Local Co-ordinate Reference:	Well Anschutz Eq Farms 4-62-33-3225CDH2
Company:	Bill Barrett Corp.	TVD Reference:	WELL @ 4674.00usft (Original Well Elev)
Project:	Weld Co., CO	MD Reference:	WELL @ 4674.00usft (Original Well Elev)
Site:	Sec.33-T4N-R62W	North Reference:	True
Well:	Anschutz Eq Farms 4-62-33-3225CDH2	Survey Calculation Method:	Minimum Curvature
Wellbore:	Wellbore #1		
Design:	Design #1		

Planned Survey									
Measured Depth (usft)	Inclination (°)	Azimuth (°)	Vertical Depth (usft)	+N/-S (usft)	+E/-W (usft)	Vertical Section (usft)	Dogleg Rate (°/100usft)	Build Rate (°/100usft)	Turn Rate (°/100usft)
0.00	0.00	0.00	0.00	0.00	0.00	0.00	0.00	0.00	0.00
100.00	0.00	0.00	100.00	0.00	0.00	0.00	0.00	0.00	0.00
200.00	0.00	0.00	200.00	0.00	0.00	0.00	0.00	0.00	0.00
300.00	0.00	0.00	300.00	0.00	0.00	0.00	0.00	0.00	0.00
400.00	0.00	0.00	400.00	0.00	0.00	0.00	0.00	0.00	0.00
500.00	0.00	0.00	500.00	0.00	0.00	0.00	0.00	0.00	0.00
600.00	0.00	0.00	600.00	0.00	0.00	0.00	0.00	0.00	0.00
700.00	0.00	0.00	700.00	0.00	0.00	0.00	0.00	0.00	0.00
800.00	0.00	0.00	800.00	0.00	0.00	0.00	0.00	0.00	0.00
Start Build 1.50									
900.00	0.00	0.00	900.00	0.00	0.00	0.00	0.00	0.00	0.00
1,000.00	1.50	251.50	999.99	-0.42	-1.24	-1.25	1.50	1.50	0.00
Start 4164.19 hold at 1109.41 MD									
1,109.41	3.14	251.50	1,109.30	-1.82	-5.44	-5.47	1.50	1.50	0.00
1,200.00	3.14	251.50	1,199.76	-3.40	-10.15	-10.20	0.00	0.00	0.00
1,300.00	3.14	251.50	1,299.61	-5.14	-15.35	-15.42	0.00	0.00	0.00
1,400.00	3.14	251.50	1,399.46	-6.87	-20.54	-20.64	0.00	0.00	0.00
1,500.00	3.14	251.50	1,499.31	-8.61	-25.74	-25.86	0.00	0.00	0.00
1,600.00	3.14	251.50	1,599.16	-10.35	-30.93	-31.08	0.00	0.00	0.00
1,700.00	3.14	251.50	1,699.01	-12.09	-36.13	-36.30	0.00	0.00	0.00
1,800.00	3.14	251.50	1,798.86	-13.83	-41.33	-41.53	0.00	0.00	0.00
1,900.00	3.14	251.50	1,898.71	-15.57	-46.52	-46.75	0.00	0.00	0.00
2,000.00	3.14	251.50	1,998.56	-17.31	-51.72	-51.97	0.00	0.00	0.00
2,100.00	3.14	251.50	2,098.41	-19.05	-56.92	-57.19	0.00	0.00	0.00
2,200.00	3.14	251.50	2,198.26	-20.78	-62.11	-62.41	0.00	0.00	0.00
2,300.00	3.14	251.50	2,298.11	-22.52	-67.31	-67.63	0.00	0.00	0.00
2,400.00	3.14	251.50	2,397.96	-24.26	-72.51	-72.85	0.00	0.00	0.00
2,500.00	3.14	251.50	2,497.81	-26.00	-77.70	-78.07	0.00	0.00	0.00
2,600.00	3.14	251.50	2,597.66	-27.74	-82.90	-83.30	0.00	0.00	0.00
2,700.00	3.14	251.50	2,697.51	-29.48	-88.09	-88.52	0.00	0.00	0.00
2,800.00	3.14	251.50	2,797.36	-31.22	-93.29	-93.74	0.00	0.00	0.00
2,900.00	3.14	251.50	2,897.20	-32.96	-98.49	-98.96	0.00	0.00	0.00
3,000.00	3.14	251.50	2,997.05	-34.70	-103.68	-104.18	0.00	0.00	0.00
3,100.00	3.14	251.50	3,096.90	-36.43	-108.88	-109.40	0.00	0.00	0.00
3,200.00	3.14	251.50	3,196.75	-38.17	-114.08	-114.62	0.00	0.00	0.00
3,300.00	3.14	251.50	3,296.60	-39.91	-119.27	-119.85	0.00	0.00	0.00
3,400.00	3.14	251.50	3,396.45	-41.65	-124.47	-125.07	0.00	0.00	0.00
3,500.00	3.14	251.50	3,496.30	-43.39	-129.67	-130.29	0.00	0.00	0.00
3,600.00	3.14	251.50	3,596.15	-45.13	-134.86	-135.51	0.00	0.00	0.00
3,700.00	3.14	251.50	3,696.00	-46.87	-140.06	-140.73	0.00	0.00	0.00
3,800.00	3.14	251.50	3,795.85	-48.61	-145.25	-145.95	0.00	0.00	0.00
3,900.00	3.14	251.50	3,895.70	-50.34	-150.45	-151.17	0.00	0.00	0.00
4,000.00	3.14	251.50	3,995.55	-52.08	-155.65	-156.39	0.00	0.00	0.00
4,100.00	3.14	251.50	4,095.40	-53.82	-160.84	-161.62	0.00	0.00	0.00
4,200.00	3.14	251.50	4,195.25	-55.56	-166.04	-166.84	0.00	0.00	0.00
4,300.00	3.14	251.50	4,295.10	-57.30	-171.24	-172.06	0.00	0.00	0.00
4,400.00	3.14	251.50	4,394.95	-59.04	-176.43	-177.28	0.00	0.00	0.00
4,500.00	3.14	251.50	4,494.80	-60.78	-181.63	-182.50	0.00	0.00	0.00
4,600.00	3.14	251.50	4,594.65	-62.52	-186.83	-187.72	0.00	0.00	0.00
4,700.00	3.14	251.50	4,694.50	-64.26	-192.02	-192.94	0.00	0.00	0.00
4,800.00	3.14	251.50	4,794.35	-65.99	-197.22	-198.16	0.00	0.00	0.00
4,900.00	3.14	251.50	4,894.20	-67.73	-202.41	-203.39	0.00	0.00	0.00
5,000.00	3.14	251.50	4,994.05	-69.47	-207.61	-208.61	0.00	0.00	0.00
5,100.00	3.14	251.50	5,093.90	-71.21	-212.81	-213.83	0.00	0.00	0.00

Database:	EDMDBBW	Local Co-ordinate Reference:	Well Anschutz Eq Farms 4-62-33-3225CDH2
Company:	Bill Barrett Corp.	TVD Reference:	WELL @ 4674.00usft (Original Well Elev)
Project:	Weld Co., CO	MD Reference:	WELL @ 4674.00usft (Original Well Elev)
Site:	Sec.33-T4N-R62W	North Reference:	True
Well:	Anschutz Eq Farms 4-62-33-3225CDH2	Survey Calculation Method:	Minimum Curvature
Wellbore:	Wellbore #1		
Design:	Design #1		

Planned Survey									
Measured Depth (usft)	Inclination (°)	Azimuth (°)	Vertical Depth (usft)	+N/-S (usft)	+E/-W (usft)	Vertical Section (usft)	Dogleg Rate (°/100usft)	Build Rate (°/100usft)	Turn Rate (°/100usft)
Shannon									
5,163.81	3.14	251.50	5,157.62	-72.32	-216.12	-217.16	0.00	0.00	0.00
5,200.00	3.14	251.50	5,193.75	-72.95	-218.00	-219.05	0.00	0.00	0.00
Start Drop -1.50									
5,273.60	3.14	251.50	5,267.24	-74.23	-221.83	-222.89	0.00	0.00	0.00
5,300.00	2.75	251.50	5,293.60	-74.66	-223.11	-224.18	1.50	-1.50	0.00
5,400.00	1.25	251.50	5,393.54	-75.76	-226.41	-227.50	1.50	-1.50	0.00
Start 500.03 hold at 5483.01 MD									
5,483.01	0.00	0.00	5,476.54	-76.05	-227.27	-228.36	1.50	-1.50	0.00
5,500.00	0.00	0.00	5,493.53	-76.05	-227.27	-228.36	0.00	0.00	0.00
5,600.00	0.00	0.00	5,593.53	-76.05	-227.27	-228.36	0.00	0.00	0.00
5,700.00	0.00	0.00	5,693.53	-76.05	-227.27	-228.36	0.00	0.00	0.00
5,800.00	0.00	0.00	5,793.53	-76.05	-227.27	-228.36	0.00	0.00	0.00
5,900.00	0.00	0.00	5,893.53	-76.05	-227.27	-228.36	0.00	0.00	0.00
Start Build 12.00									
5,983.04	0.00	0.00	5,976.57	-76.05	-227.27	-228.36	0.00	0.00	0.00
6,000.00	2.04	89.16	5,993.53	-76.05	-226.97	-228.06	12.00	12.00	0.00
6,025.00	5.04	89.16	6,018.48	-76.02	-225.43	-226.52	12.00	12.00	0.00
Sharon Springs									
6,038.30	6.63	89.16	6,031.71	-76.00	-224.08	-225.17	12.00	12.00	0.00
6,050.00	8.04	89.16	6,043.31	-75.98	-222.58	-223.67	12.00	12.00	0.00
6,075.00	11.04	89.16	6,067.97	-75.92	-218.44	-219.53	12.00	12.00	0.00
6,100.00	14.04	89.16	6,092.37	-75.84	-213.02	-214.11	12.00	12.00	0.00
6,125.00	17.04	89.16	6,116.45	-75.74	-206.32	-207.41	12.00	12.00	0.00
Niobrara									
6,140.76	18.93	89.16	6,131.44	-75.67	-201.46	-202.55	12.00	12.00	0.00
6,150.00	20.04	89.16	6,140.15	-75.62	-198.38	-199.46	12.00	12.00	0.00
6,175.00	23.04	89.16	6,163.40	-75.49	-189.20	-190.29	12.00	12.00	0.00
6,200.00	26.04	89.16	6,186.14	-75.34	-178.82	-179.91	12.00	12.00	0.00
6,225.00	29.04	89.16	6,208.31	-75.17	-167.27	-168.35	12.00	12.00	0.00
6,250.00	32.04	89.16	6,229.84	-74.98	-154.57	-155.65	12.00	12.00	0.00
6,275.00	35.04	89.16	6,250.68	-74.78	-140.76	-141.84	12.00	12.00	0.00
6,300.00	38.04	89.16	6,270.76	-74.56	-125.88	-126.96	12.00	12.00	0.00
6,325.00	41.04	89.16	6,290.04	-74.32	-109.97	-111.05	12.00	12.00	0.00
6,350.00	44.04	89.16	6,308.46	-74.07	-93.07	-94.15	12.00	12.00	0.00
6,375.00	47.04	89.16	6,325.97	-73.81	-75.23	-76.31	12.00	12.00	0.00
6,400.00	50.04	89.16	6,342.52	-73.53	-56.50	-57.58	12.00	12.00	0.00
6,425.00	53.04	89.16	6,358.07	-73.25	-36.93	-38.00	12.00	12.00	0.00
6,450.00	56.04	89.16	6,372.57	-72.95	-16.58	-17.64	12.00	12.00	0.00
6,475.00	59.04	89.16	6,385.99	-72.63	4.51	3.45	12.00	12.00	0.00
6,500.00	62.04	89.16	6,398.29	-72.31	26.27	25.21	12.00	12.00	0.00
6,525.00	65.04	89.16	6,409.43	-71.98	48.65	47.59	12.00	12.00	0.00
6,550.00	68.04	89.16	6,419.38	-71.65	71.58	70.52	12.00	12.00	0.00
6,575.00	71.04	89.16	6,428.12	-71.30	94.99	93.94	12.00	12.00	0.00
6,600.00	74.04	89.16	6,435.62	-70.95	118.84	117.78	12.00	12.00	0.00
6,625.00	77.04	89.16	6,441.86	-70.59	143.04	141.99	12.00	12.00	0.00
Top B2 Target									
6,645.58	79.51	89.16	6,446.05	-70.30	163.18	162.13	12.00	12.00	0.00
6,650.00	80.04	89.16	6,446.83	-70.23	167.53	166.49	12.00	12.00	0.00
6,675.00	83.04	89.16	6,450.51	-69.87	192.26	191.21	12.00	12.00	0.00
6,700.00	86.04	89.16	6,452.89	-69.50	217.14	216.09	12.00	12.00	0.00
6,725.00	89.04	89.16	6,453.97	-69.13	242.11	241.07	12.00	12.00	0.00
Start 9533.25 hold at 6738.80 MD - 7" Csg.									

Database:	EDMDBBW	Local Co-ordinate Reference:	Well Anschutz Eq Farms 4-62-33-3225CDH2
Company:	Bill Barrett Corp.	TVD Reference:	WELL @ 4674.00usft (Original Well Elev)
Project:	Weld Co., CO	MD Reference:	WELL @ 4674.00usft (Original Well Elev)
Site:	Sec.33-T4N-R62W	North Reference:	True
Well:	Anschutz Eq Farms 4-62-33-3225CDH2	Survey Calculation Method:	Minimum Curvature
Wellbore:	Wellbore #1		
Design:	Design #1		

Planned Survey										
Measured Depth (usft)	Inclination (°)	Azimuth (°)	Vertical Depth (usft)	+N/-S (usft)	+E/-W (usft)	Vertical Section (usft)	Dogleg Rate (°/100usft)	Build Rate (°/100usft)	Turn Rate (°/100usft)	
6,738.80	90.69	89.16	6,454.00	-68.93	255.91	254.87	12.00	12.00	0.00	
6,800.00	90.69	89.16	6,453.26	-68.03	317.10	316.06	0.00	0.00	0.00	
6,900.00	90.69	89.16	6,452.06	-66.56	417.08	416.06	0.00	0.00	0.00	
7,000.00	90.69	89.16	6,450.85	-65.08	517.06	516.05	0.00	0.00	0.00	
7,100.00	90.69	89.16	6,449.64	-63.61	617.04	616.04	0.00	0.00	0.00	
7,200.00	90.69	89.16	6,448.44	-62.14	717.02	716.03	0.00	0.00	0.00	
7,300.00	90.69	89.16	6,447.23	-60.66	817.00	816.03	0.00	0.00	0.00	
7,400.00	90.69	89.16	6,446.02	-59.19	916.99	916.02	0.00	0.00	0.00	
7,500.00	90.69	89.16	6,444.82	-57.72	1,016.97	1,016.01	0.00	0.00	0.00	
7,600.00	90.69	89.16	6,443.61	-56.24	1,116.95	1,116.01	0.00	0.00	0.00	
7,700.00	90.69	89.16	6,442.40	-54.77	1,216.93	1,216.00	0.00	0.00	0.00	
7,800.00	90.69	89.16	6,441.20	-53.30	1,316.91	1,315.99	0.00	0.00	0.00	
7,900.00	90.69	89.16	6,439.99	-51.82	1,416.90	1,415.98	0.00	0.00	0.00	
8,000.00	90.69	89.16	6,438.79	-50.35	1,516.88	1,515.98	0.00	0.00	0.00	
8,100.00	90.69	89.16	6,437.58	-48.88	1,616.86	1,615.97	0.00	0.00	0.00	
8,200.00	90.69	89.16	6,436.37	-47.40	1,716.84	1,715.96	0.00	0.00	0.00	
8,300.00	90.69	89.16	6,435.17	-45.93	1,816.82	1,815.95	0.00	0.00	0.00	
8,400.00	90.69	89.16	6,433.96	-44.46	1,916.80	1,915.95	0.00	0.00	0.00	
8,500.00	90.69	89.16	6,432.75	-42.98	2,016.79	2,015.94	0.00	0.00	0.00	
8,600.00	90.69	89.16	6,431.55	-41.51	2,116.77	2,115.93	0.00	0.00	0.00	
8,700.00	90.69	89.16	6,430.34	-40.04	2,216.75	2,215.93	0.00	0.00	0.00	
8,800.00	90.69	89.16	6,429.13	-38.56	2,316.73	2,315.92	0.00	0.00	0.00	
8,900.00	90.69	89.16	6,427.93	-37.09	2,416.71	2,415.91	0.00	0.00	0.00	
9,000.00	90.69	89.16	6,426.72	-35.62	2,516.70	2,515.90	0.00	0.00	0.00	
9,100.00	90.69	89.16	6,425.52	-34.14	2,616.68	2,615.90	0.00	0.00	0.00	
9,200.00	90.69	89.16	6,424.31	-32.67	2,716.66	2,715.89	0.00	0.00	0.00	
9,300.00	90.69	89.16	6,423.10	-31.20	2,816.64	2,815.88	0.00	0.00	0.00	
9,400.00	90.69	89.16	6,421.90	-29.72	2,916.62	2,915.87	0.00	0.00	0.00	
9,500.00	90.69	89.16	6,420.69	-28.25	3,016.61	3,015.87	0.00	0.00	0.00	
9,600.00	90.69	89.16	6,419.48	-26.78	3,116.59	3,115.86	0.00	0.00	0.00	
9,700.00	90.69	89.16	6,418.28	-25.30	3,216.57	3,215.85	0.00	0.00	0.00	
9,800.00	90.69	89.16	6,417.07	-23.83	3,316.55	3,315.85	0.00	0.00	0.00	
9,900.00	90.69	89.16	6,415.87	-22.36	3,416.53	3,415.84	0.00	0.00	0.00	
10,000.00	90.69	89.16	6,414.66	-20.88	3,516.51	3,515.83	0.00	0.00	0.00	
10,100.00	90.69	89.16	6,413.45	-19.41	3,616.50	3,615.82	0.00	0.00	0.00	
10,200.00	90.69	89.16	6,412.25	-17.94	3,716.48	3,715.82	0.00	0.00	0.00	
10,300.00	90.69	89.16	6,411.04	-16.46	3,816.46	3,815.81	0.00	0.00	0.00	
10,400.00	90.69	89.16	6,409.83	-14.99	3,916.44	3,915.80	0.00	0.00	0.00	
10,500.00	90.69	89.16	6,408.63	-13.52	4,016.42	4,015.79	0.00	0.00	0.00	
10,600.00	90.69	89.16	6,407.42	-12.04	4,116.41	4,115.79	0.00	0.00	0.00	
10,700.00	90.69	89.16	6,406.21	-10.57	4,216.39	4,215.78	0.00	0.00	0.00	
10,800.00	90.69	89.16	6,405.01	-9.10	4,316.37	4,315.77	0.00	0.00	0.00	
10,900.00	90.69	89.16	6,403.80	-7.62	4,416.35	4,415.77	0.00	0.00	0.00	
11,000.00	90.69	89.16	6,402.60	-6.15	4,516.33	4,515.76	0.00	0.00	0.00	
11,100.00	90.69	89.16	6,401.39	-4.68	4,616.32	4,615.75	0.00	0.00	0.00	
11,200.00	90.69	89.16	6,400.18	-3.20	4,716.30	4,715.74	0.00	0.00	0.00	
11,300.00	90.69	89.16	6,398.98	-1.73	4,816.28	4,815.74	0.00	0.00	0.00	
11,400.00	90.69	89.16	6,397.77	-0.26	4,916.26	4,915.73	0.00	0.00	0.00	
11,500.00	90.69	89.16	6,396.56	1.22	5,016.24	5,015.72	0.00	0.00	0.00	
11,600.00	90.69	89.16	6,395.36	2.69	5,116.22	5,115.71	0.00	0.00	0.00	
11,700.00	90.69	89.16	6,394.15	4.16	5,216.21	5,215.71	0.00	0.00	0.00	
11,800.00	90.69	89.16	6,392.94	5.64	5,316.19	5,315.70	0.00	0.00	0.00	
11,900.00	90.69	89.16	6,391.74	7.11	5,416.17	5,415.69	0.00	0.00	0.00	
12,000.00	90.69	89.16	6,390.53	8.58	5,516.15	5,515.69	0.00	0.00	0.00	

Database:	EDMDBBW	Local Co-ordinate Reference:	Well Anschutz Eq Farms 4-62-33-3225CDH2
Company:	Bill Barrett Corp.	TVD Reference:	WELL @ 4674.00usft (Original Well Elev)
Project:	Weld Co., CO	MD Reference:	WELL @ 4674.00usft (Original Well Elev)
Site:	Sec.33-T4N-R62W	North Reference:	True
Well:	Anschutz Eq Farms 4-62-33-3225CDH2	Survey Calculation Method:	Minimum Curvature
Wellbore:	Wellbore #1		
Design:	Design #1		

Planned Survey									
Measured Depth (usft)	Inclination (°)	Azimuth (°)	Vertical Depth (usft)	+N/-S (usft)	+E/-W (usft)	Vertical Section (usft)	Dogleg Rate (°/100usft)	Build Rate (°/100usft)	Turn Rate (°/100usft)
12,100.00	90.69	89.16	6,389.33	10.06	5,616.13	5,615.68	0.00	0.00	0.00
12,200.00	90.69	89.16	6,388.12	11.53	5,716.12	5,715.67	0.00	0.00	0.00
12,300.00	90.69	89.16	6,386.91	13.00	5,816.10	5,815.66	0.00	0.00	0.00
12,400.00	90.69	89.16	6,385.71	14.48	5,916.08	5,915.66	0.00	0.00	0.00
12,500.00	90.69	89.16	6,384.50	15.95	6,016.06	6,015.65	0.00	0.00	0.00
12,600.00	90.69	89.16	6,383.29	17.42	6,116.04	6,115.64	0.00	0.00	0.00
12,700.00	90.69	89.16	6,382.09	18.90	6,216.03	6,215.63	0.00	0.00	0.00
12,800.00	90.69	89.16	6,380.88	20.37	6,316.01	6,315.63	0.00	0.00	0.00
12,900.00	90.69	89.16	6,379.67	21.84	6,415.99	6,415.62	0.00	0.00	0.00
13,000.00	90.69	89.16	6,378.47	23.32	6,515.97	6,515.61	0.00	0.00	0.00
13,100.00	90.69	89.16	6,377.26	24.79	6,615.95	6,615.61	0.00	0.00	0.00
13,200.00	90.69	89.16	6,376.06	26.26	6,715.93	6,715.60	0.00	0.00	0.00
13,300.00	90.69	89.16	6,374.85	27.74	6,815.92	6,815.59	0.00	0.00	0.00
13,400.00	90.69	89.16	6,373.64	29.21	6,915.90	6,915.58	0.00	0.00	0.00
13,500.00	90.69	89.16	6,372.44	30.68	7,015.88	7,015.58	0.00	0.00	0.00
13,600.00	90.69	89.16	6,371.23	32.16	7,115.86	7,115.57	0.00	0.00	0.00
13,700.00	90.69	89.16	6,370.02	33.63	7,215.84	7,215.56	0.00	0.00	0.00
13,800.00	90.69	89.16	6,368.82	35.10	7,315.83	7,315.55	0.00	0.00	0.00
13,900.00	90.69	89.16	6,367.61	36.58	7,415.81	7,415.55	0.00	0.00	0.00
14,000.00	90.69	89.16	6,366.41	38.05	7,515.79	7,515.54	0.00	0.00	0.00
14,100.00	90.69	89.16	6,365.20	39.52	7,615.77	7,615.53	0.00	0.00	0.00
14,200.00	90.69	89.16	6,363.99	41.00	7,715.75	7,715.53	0.00	0.00	0.00
14,300.00	90.69	89.16	6,362.79	42.47	7,815.74	7,815.52	0.00	0.00	0.00
14,400.00	90.69	89.16	6,361.58	43.94	7,915.72	7,915.51	0.00	0.00	0.00
14,500.00	90.69	89.16	6,360.37	45.42	8,015.70	8,015.50	0.00	0.00	0.00
14,600.00	90.69	89.16	6,359.17	46.89	8,115.68	8,115.50	0.00	0.00	0.00
14,700.00	90.69	89.16	6,357.96	48.36	8,215.66	8,215.49	0.00	0.00	0.00
14,800.00	90.69	89.16	6,356.75	49.84	8,315.64	8,315.48	0.00	0.00	0.00
14,900.00	90.69	89.16	6,355.55	51.31	8,415.63	8,415.47	0.00	0.00	0.00
15,000.00	90.69	89.16	6,354.34	52.78	8,515.61	8,515.47	0.00	0.00	0.00
15,100.00	90.69	89.16	6,353.14	54.26	8,615.59	8,615.46	0.00	0.00	0.00
15,200.00	90.69	89.16	6,351.93	55.73	8,715.57	8,715.45	0.00	0.00	0.00
15,300.00	90.69	89.16	6,350.72	57.20	8,815.55	8,815.45	0.00	0.00	0.00
15,400.00	90.69	89.16	6,349.52	58.67	8,915.54	8,915.44	0.00	0.00	0.00
15,500.00	90.69	89.16	6,348.31	60.15	9,015.52	9,015.43	0.00	0.00	0.00
15,600.00	90.69	89.16	6,347.10	61.62	9,115.50	9,115.42	0.00	0.00	0.00
15,700.00	90.69	89.16	6,345.90	63.09	9,215.48	9,215.42	0.00	0.00	0.00
15,800.00	90.69	89.16	6,344.69	64.57	9,315.46	9,315.41	0.00	0.00	0.00
15,900.00	90.69	89.16	6,343.48	66.04	9,415.45	9,415.40	0.00	0.00	0.00
16,000.00	90.69	89.16	6,342.28	67.51	9,515.43	9,515.39	0.00	0.00	0.00
16,100.00	90.69	89.16	6,341.07	68.99	9,615.41	9,615.39	0.00	0.00	0.00
16,200.00	90.69	89.16	6,339.87	70.46	9,715.39	9,715.38	0.00	0.00	0.00
TD at 16272.05									
16,272.05	90.69	89.16	6,339.00	71.52	9,787.43	9,787.42	0.00	0.00	0.00

Database:	EDMDBBW	Local Co-ordinate Reference:	Well Anschutz Eq Farms 4-62-33-3225CDH2
Company:	Bill Barrett Corp.	TVD Reference:	WELL @ 4674.00usft (Original Well Elev)
Project:	Weld Co., CO	MD Reference:	WELL @ 4674.00usft (Original Well Elev)
Site:	Sec.33-T4N-R62W	North Reference:	True
Well:	Anschutz Eq Farms 4-62-33-3225CDH2	Survey Calculation Method:	Minimum Curvature
Wellbore:	Wellbore #1		
Design:	Design #1		

Design Targets									
Target Name	Dip Angle	Dip Dir.	TVD	+N/-S	+E/-W	Northing	Easting	Latitude	Longitude
- hit/miss target	(°)	(°)	(usft)	(usft)	(usft)	(usft)	(usft)		
- Shape									
Anschutz Eq Farms 4-62-33-3225CDH2	0.00	0.00	6,339.00	71.52	9,787.43	1,343,598.419	3,334,160.672	40° 16' 13.379 N	104° 18' 8.780 W
- plan hits target center									
- Point									

Casing Points				
Measured Depth	Vertical Depth	Name	Casing Diameter	Hole Diameter
(usft)	(usft)		(")	(")
6,738.80	6,454.00	7" Csg.	7	8-3/4

Formations					
Measured Depth	Vertical Depth	Name	Lithology	Dip	Dip Direction
(usft)	(usft)			(°)	(°)
5,163.81	5,155.00	Shannon		-0.69	89.16
6,038.30	6,029.00	Sharon Springs		-0.69	89.16
6,140.76	6,129.00	Niobrara		-0.69	89.16
6,645.58	6,448.00	Top B2 Target		-0.69	89.16

Plan Annotations				
Measured Depth	Vertical Depth	Local Coordinates		Comment
(usft)	(usft)	+N/-S (usft)	+E/-W (usft)	
900.00	900.00	0.00	0.00	Start Build 1.50
1,109.41	1,109.30	-1.82	-5.44	Start 4164.19 hold at 1109.41 MD
5,273.60	5,267.24	-74.23	-221.83	Start Drop -1.50
5,483.01	5,476.54	-76.05	-227.27	Start 500.03 hold at 5483.01 MD
5,983.04	5,976.57	-76.05	-227.27	Start Build 12.00
6,738.80	6,454.00	-68.93	255.90	Start 9533.25 hold at 6738.80 MD
16,272.05	6,339.00	71.52	9,787.43	TD at 16272.05